

e-flare™

Hazard & Safety Lighting

Our powerful LED lights are designed to be durable, versatile, and long-lasting, offering dependable illumination for personnel in any environment. Built with advanced technology and premium materials, these lights ensure durability, brightness, and user-friendly operation, all while remaining compact and portable.

+ Performance

+ Durability

+ Reliability

Survival Solutions You Can Trust



ABOUT EFLARE

The Eflare core design has a wide range of colours, capabilities and fitting options, while the product features can be deployed in the standard or compact sizes, with longer duration variants and adaptable light output options to meet any operational need. At Eflare, our passion for innovation is matched only by our dedication to safety.

We take immense pride in knowing that our products play a crucial role in safeguarding individuals in various environments, ensuring their safety anytime, anywhere. In 2024 the Eflare was acquired by the UK headquartered Wescom Group, who specialise in high quality manufacture and the global logistics of trusted safety and survival solutions.

Trusted globally, our products prioritise performance, durability, and reliability, enhancing hazard awareness and ensuring worker safety.

PERFORMANCE

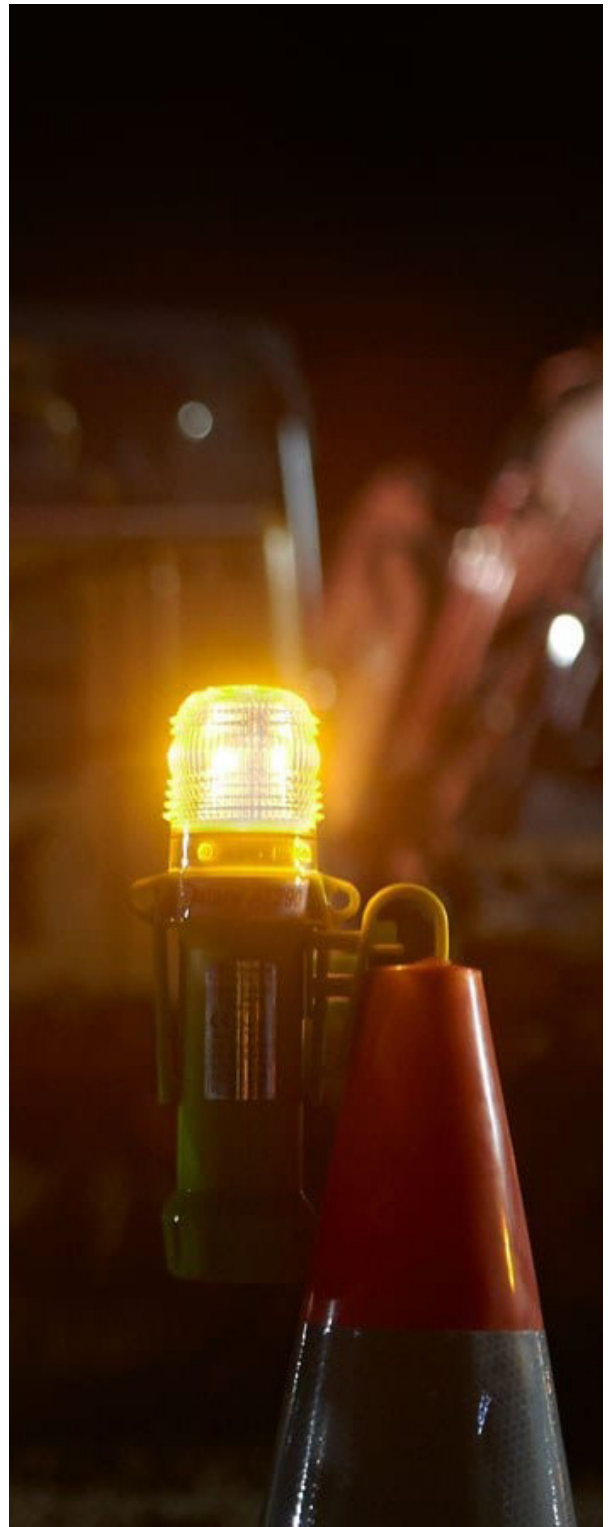
- + Our innovative intelligent power LED illumination ensures long-lasting safety performance, providing you with reliable visibility in all conditions.
- + The fluorescent body and reflective strips enhance visibility, even when the lights are deactivated.
- + Intrinsically safe and ATEX Zone 2 approved.

DURABILITY

- + Designed for harsh environments, with reinforced attachment points and impact-resistant materials to ensure durability.
- + Multiple accessories are available to enhance its versatility, allowing for effective use in a wide range of applications.
- + Water and shock-resistant, ensuring reliability even in the toughest industrial environments.

RELIABILITY

- + An automatic daylight sensor adjusts power, extending the battery life.
- + The battery status informs when your batteries are running low providing confidence in performance.
- + A fail-safe switch prevents accidental activation or deactivation, not wasting battery life unexpectedly and allows for use in gloved hands in any condition.

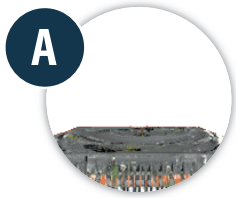


PRODUCT FEATURES

Eflare lights offer the latest innovation, dynamic deployment options and flexible usability. Trusted globally, our products prioritise performance, reliability, and durability, enhancing hazard awareness and ensuring worker safety.

Our latest innovation, the Unified Beacon (UB) range, exemplifies our values. Combining advanced technology with a durable, high-visibility design, the UB range boasts dynamic deployment options and intelligent power. It undergoes thorough testing for use in diverse environments and is complemented by multiple attachment options, ensuring readiness for varied applications, superior worker protection and operational hazard awareness.

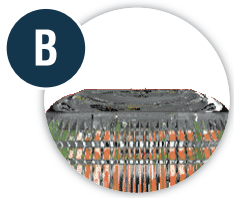
Eflare Lights are built for Performance, Reliability and Durability.



A

BATTERY STATUS INDICATOR

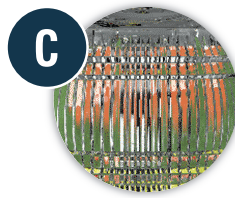
A low battery indicator quickly informs you when the battery requires changing



B

CLEAR FRESNEL LENS

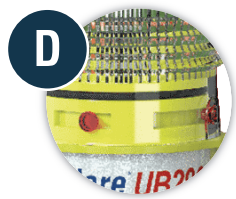
Designed to minimise the impact on workers around the beacon or loss of night vision



C

POWERFUL LEDs

Features 8 high performance LEDs with variable colours & activation modes



D

COLOURED INDICATORS

A coloured indicator pin shows the LED colour combination of the beacon



E

MULTIPLE FIXING POINTS

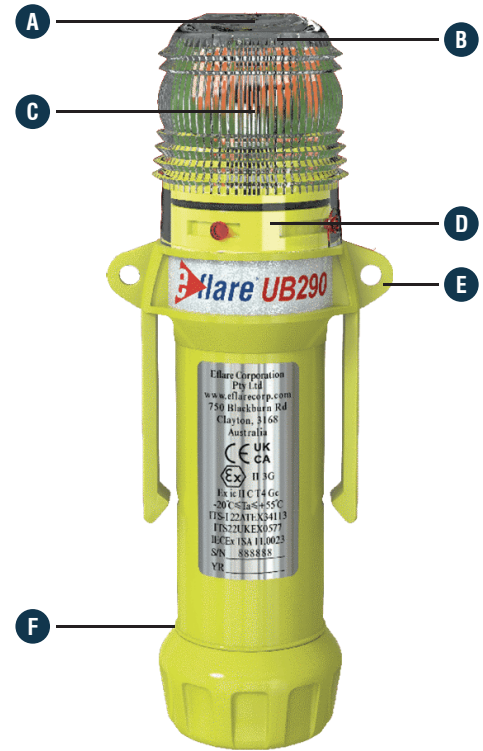
Reinforced attachment points allow for multiple clipping and mounting options



F

PRECISION O-RINGS

A precision O-Ring under the base cap ensures an IP66 rating



PRODUCT ACCESSORIES

A range of useful accessories is available to fit all Eflare models.



Cone Clip

Enables vertical positioning of any Eflare beacon on most types of traffic cones.



Magnetic Side Clip

Allows Eflare beacons to be easily side mounted on most metallic objects.



Rubber Base Mount

The most popular Eflare base for use on roads or flat surfaces.



Magnetic Base Mount

Combines a magnetic base and cap to firmly and securely mount Eflares to metallic objects rated to 80kph.



Aviation Base Mount

Higher mounting teeth for use in aviation (high wind applications) and can be fixed to the ground.



Compact Magnetic Base Cap

Can be easily used for simple bottom attachment to most metallic objects.



Rail Base Mount

Ensures a secure magnetic mount for the rail industry.

WHERE EFLARE LIGHTS CAN BE USED

Originally developed in conjunction with, and using significant input from Police and Fire Brigades in several countries, Eflare beacons now serve multiple sectors with their adaptable lighting options, modular accessories, and robust construction. Their flexible design and durable build contribute to ensuring personnel safety worldwide.

TRANSIT

Recognised for their durability and extended battery life, Eflare lights are indispensable tools for rail, metro, and transit authorities. Specifically, their versatile colour range, that effectively highlights maintenance areas, construction zones, track closures, electrical hazards, and exclusion zones, enhancing safety for workers and passengers on railway tracks. The advanced features of Eflare beacons optimise visibility and operational efficiency in transit environments.

- Battery Status Indicator
- Automatic daylight power saving
- Multiple colour options



DEFENCE & SEARCH AND RESCUE

Eflare's robust and compact housing combined, offer unparalleled capabilities for tactical deployment in signalling for security operations. These features support covert operations, perimeter security, and training scenarios in defence settings. Eflare have previously produced IR models for militarily organisations to support detection capabilities.

- Robust & rugged housing
- Compact size & extended power options
- Accessories for varied deployment



OIL & GAS

Engineered with an intrinsically safe design and high visibility, Eflare lights are ideal for fuel transport and transfer services in the oil and gas sector. The unit's fluorescent body, with reflective strips and high luminosity, are ideal for marking unloading and safe working areas, along with public warning capabilities, ensures heightened safety during fuel transport, transfer operations, and maintenance activities.

- ATEX Zone 2
- Durable design with shatter proof lens
- Fluorescent body



AVIATION

Featuring visibility up to 1km, Eflare lights are designed for optimal performance in various aviation applications where clarity and light intensity are critical. Additionally, their reliability with built-in fail-safe switches and specific aviation deployment attachments, makes them ideal for temporary and emergency runways, landing zones, airport maintenance, and ground operations, ensuring enhanced safety in aviation environments.

- Aviation deployment accessories
- Flexible activation modes lens
- Fail Safe features



EMERGENCY SERVICES

Eflare's diverse range of colours and operational modes allowing flashing, steady on or both illumination options, provide fire services, ambulances, and traffic police with enhanced situational awareness and visibility. Specifically, these capabilities ensure safety and efficiency during fire incidents, medical emergencies, road accidents, and traffic management operations.

- Powerful 70-85 cd Illumination
- Accelerated deployment options
- Dual colour flashing



CONSTRUCTION, MINING, AND INDUSTRIAL

In demanding construction, roadworks, and industrial settings, Eflare's robust, water and dust-resistant lights, along with versatile deployment options are ideal for illuminating perimeters, amplifying hazard awareness, and delineating safe routes. Their performance is crucial during low-light or night-time operations, excavation works, machinery movements, and site maintenance activities.

- Extended life options
- Rugged design
- Reliable performance



OTHER SECTORS

The functionality requirements of illuminated beacons can vary significantly depending on the work environment or industry. Product features may be mandated by national legislation or common industry standards related to colours and specific operational needs.

Embodying innovation and reliability, our team can collaborate with you to develop a bespoke solution tailored to your specific requirements.

EFLARE SPECIFICATION

Model Series	UB Range	Long Life UB	Compact UB
Height	20cm	20cm	15cm
Weight	260g	440g	240g
Candela Output (Flashing)	70-85 cd	70-85 cd	70-85 cd
Candela Output (Steady)	20	20	20
Flash Rate	165-185 FPM	165-185 FPM	165-185 FPM
Batteries (batteries not included)	4 X AA	2 X D cell	4 X AA
Battery Life	30-40 Hours	80-100 Hours	30-40 Hours
Waterproof	IP66	IP66	IP66
ATEX & IECEx	Approved Zone II	Approved Zone II	Approved Zone II
LEDs	8	8	8
Activation Options	<ul style="list-style-type: none"> • Combined flash/Steady on • Flash only* • Steady on only* 	<ul style="list-style-type: none"> • Combined flash/Steady on • Flash only* • Steady on only* 	<ul style="list-style-type: none"> • Combined flash/Steady on • Flash only* • Steady on only*
Beacon Colours Available	<ul style="list-style-type: none"> ● Red ● Amber ● Blue ● Green ○ White ● Red/Blue <p>Other combos available as special orders</p>	<ul style="list-style-type: none"> ● Red ● Amber ● Blue ● Green ○ White ● Red/Blue <p>Other combos available as special orders</p>	<ul style="list-style-type: none"> ● Red ● Amber ● Blue ● Green ○ White ● Red/Blue <p>Other combos available as special orders</p>

* Special Order variant

It is important to remember that battery life is indicative and depends on beacon operation mode, LED color/s, temperature and usage (day/night).

Peak candela is the peak flash luminous intensity measured in flash mode, which may vary from model to model.

