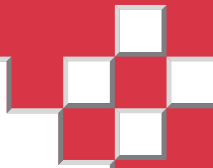


# RUTH LEE™



FOR PROFESSIONALS WHO SAVE LIVES

## TRAINING MANIKINS THE FULL RANGE







## FOR PROFESSIONALS WHO SAVE LIVES

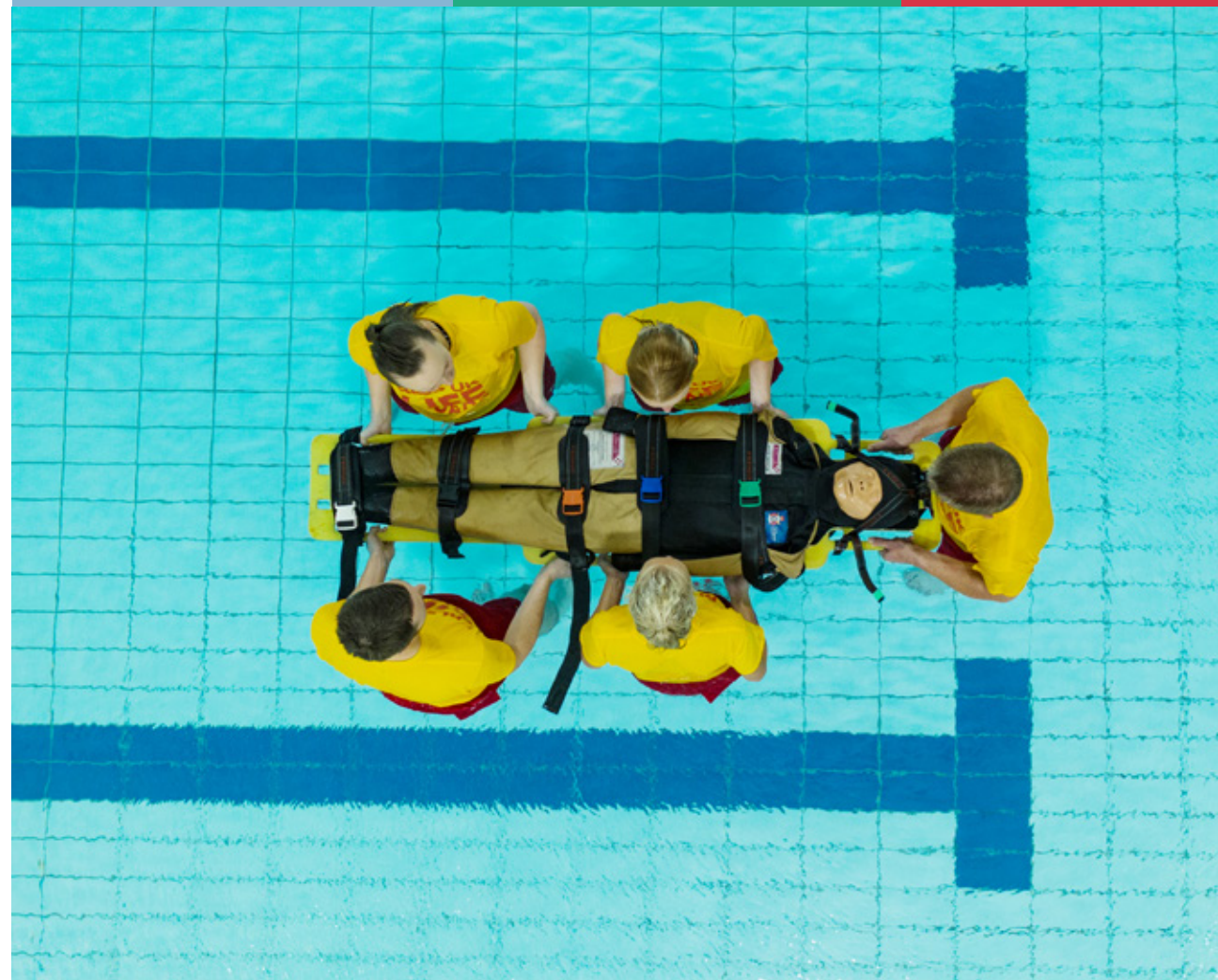
It's proven that creating realistic training helps you to perform better in real-life emergencies. Muscle memory and reactions are improved and therefore it is in your best interest to create scenarios which are as challenging as you might face in your day-to-day job.

By using manikins as the casualty, you also reduce the risk of injury to another person and minimise person-to-person contact.

Ruth Lee manikins have been designed with specific purposes in mind and with assistance from industry experts - from the Royal Navy, RNLI and RLSS to healthcare professionals, each manikin combines a series of unique features and benefits to make it the perfect training partner for your business.



- A family business with more than **25 years' experience** and strong core values.
- An unwavering **commitment to quality** and excellent customer service.
- A range of more than 25 manikins designed for specific training purposes and in consultation with experts in the fire service, Navy and RNLI.
- Products **exported around the world** to more than 40 countries world-wide.
- **Nato Stock numbers available** for many of our manikins.
- Reduce risk to volunteers during training and minimise person-to-person contact.





# TRAINING MANIKINS CHOOSING THE RIGHT MAN(IKIN) FOR THE JOB

Our range of training manikins come in a range of sizes and weights, allowing you to create a wide variety of different challenges for your team. They are manufactured to be anatomically correct with regards to weight and body proportion. With a reputation for quality, durability and outstanding customer service, you can rest assured that Ruth Lee Ltd offer the best possible manikins for your training.

## DUTY RANGE

Our standard manikin which is suitable for a variety of training scenarios. It comes in a range of weights ranging from a 5kg baby, to a 90kg adult.

It is popular with teams in all sectors and it is a tough, versatile manikin which will withstand a fall from a second story window, and being driven over by a vehicle!



## DUTY PLUS

After customer feedback we have enhanced some features on our popular Duty Range manikin. This manikin is more 'upright' through the head and torso making it a perfect 'conscious casualty' in Road Traffic Collision extrication training.



## DOG

Because sometimes our four-legged friends need rescuing too! This manikin has proven to be popular with many customers in the Military, Fire and Rescue, Mountain Rescue, Coastguard and even with private companies offering canine First Aid programmes.



## FIRE HOUSE

The Fire House Manikin was predominately designed for BA snatch rescue training in fire houses and for 'hot fire cell' training. It will easily withstand temperatures of around 160°C at floor level (400°C at the ceiling!) for a prolonged period of time.



## CASUALTY EVACUATION

The casualty evacuation training manikin was specifically designed for the Fire Fighter recruitment and annual fitness test as specified by the Chief Fire Officers Association. It is a perfect drag dummy for operational fitness assessment and ongoing fitness training.



## BARIATRIC

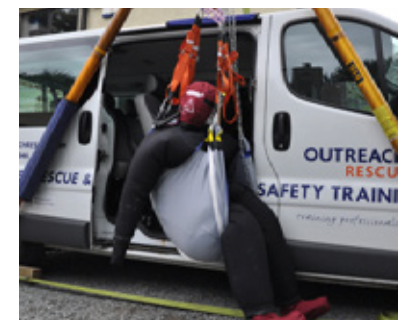
Our Bariatric range includes manikins at 90, 180 or 260kgs, with the 90kg manikin being the perfect choice when you require a dummy with bulk, but without excessive weight.

We have worked very hard to achieve a 'fluidity of movement' with the weight rather than just producing a heavy 'lump', so these manikins are very realistic to work with.



## WATER-FILLABLE BARIATRIC SUIT

Our Water-Fillable Bariatric Suit is a lightweight and flexible option for a heavy weight problem! Simply place the suit over your existing Duty Range manikin, attach a hosepipe and fill it up with water to achieve the required weight. Up to 150kg of additional weight can be added using water.



## MULTI TRAUMA

One of our more interesting manikins that can be used to simulate impalement or amputations to bring added interest to any training exercise. The removable limbs can also be partially attached using the Velcro at the end of the limb - in this way the limb may fall off during recovery if a thorough injury assessment is not made by the rescuer!



## WORKING AT HEIGHT

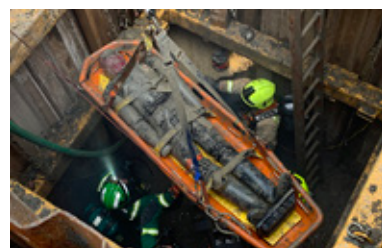
An extremely tough manikin for Working at Height and Rope Access rescue training in many industries. This manikin is constructed to provide extra rigidity through the torso and reduce slumping when using a rescue harness.





## CONFINED SPACE

The perfect training partner for confined space training, or any other difficult access location as this manikin splits into several sections making it easier to transport and construct once in position. No individual component weighs more than 25Kg.



## URBAN SEARCH AND RESCUE

This is a heavy-duty training manikin with incorporated voice activated shoutbox, giving your manikin the power of speech! It was designed specifically for USAR scenarios but has many other applications.



## MASS CASUALTY

A cost-effective manikin when large numbers of casualties are required - they are lightweight (approx. 4Kg) and would be perfect for multi-agency exercise where a large number of casualties/bodies are required to be seen but not necessarily rescued.



## MOUNTAIN RESCUE

Developed in conjunction with Scottish Mountain Rescue, these manikins are lighter in weight, to be easily carried to remote locations in its own backpack. It has integrated RECCO® reflectors, which makes an avalanche victim searchable to professional rescuers.



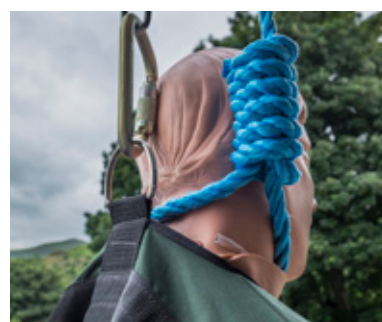
## DROP TEST

As the name suggests, this manikin was designed to assist with the testing of fall arrest equipment. It weighs in at 100Kg, which is a heavier weight to truly test the performance of equipment and is constructed with a more rigid trunk to reduce slumping when suspended in harness.



## LIGATURE

This manikin was developed in conjunction with a leading healthcare trust in the UK for the training of professionals who may need to manage ligature hanging. This manikin has anatomical features which allow you to practise airway management skills, with the hope of reviving someone who has been found hanging.



## PRISONER SECURITY

Ideally suited for prisons and correctional facilities to train for the evacuation of restrained or unconscious prisoners in an emergency. It has slimmer wrists to accommodate handcuffs to practise restraint techniques, and a reinforced neck, to allow for the simulation of a suicide (through hanging), allowing teams to practice body recovery and evidence preservation techniques.



## PMVA

The PMVA (Prevention and Management of Violence and Aggression) Manikin was designed in collaboration with a leading secure hospital, specialising in physical intervention training aimed at reducing the escalation of violence in mental health establishments.



## FULL BODY CPR

Take CPR training out of the classroom and into more realistic emergency situations for better learning outcomes. Introducing this manikin into a routine training exercise makes learners stop and think and would definitely test their preparedness!



## FULL BODY AIRWAY MANAGEMENT

Like our CPR Manikin, the Airway Management Manikin lets trainers create much more realistic life-saving skills training outside of a classroom environment. It can be purchased with or without the torso. Optional IV Arm for cannulation, providing an IV injectable site.



## PATIENT HANDLING

This is a versatile manikin which is ideal for safe lifting and handling training, and emergency evacuation planning.

It can be used with lifting/evacuation equipment and will sit well in a sling or wheelchair making it ideal for the health or care sectors who may need to practice moving patients quickly and safely in emergency situations.

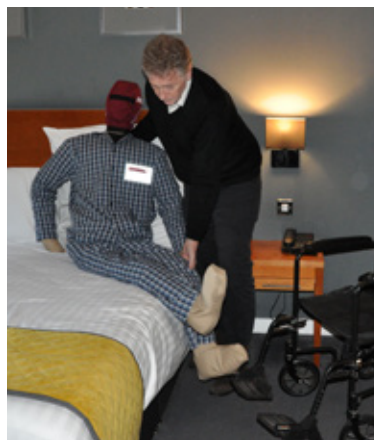




## EMERGENCY EVACUATION

Buildings which house vulnerable people with limited mobility have a duty of care to create a Personal Emergency Evacuation Plan (PEEP) for each individual. This manikin lets you train to complete those plans

Our Emergency Evacuation manikin is 25kg, so easily transported between sites and will provide the ideal tool for testing the effectiveness of your personal evacuation plans. It is constructed from an antibacterial and fire-retardant material.



## MAN OVERBOARD

Our most popular Water Rescue manikin, often called 'Dead Fred'.

The secret to the performance of this manikin is the balance between the weighting and the buoyancy - This manikin can float at any angle between the vertical and horizontal by simply moving the foam pieces between the chest pockets and the legs, a process which takes seconds.



## OFFSHORE

This model is heavier than the MOB variety making it suitable for simulating rescues from accommodation areas, engine rooms or drilling platforms.

It will withstand a fall of 5-6 meters into water and float vertically to simulate a live person in the water. It is suitable for emergency BA training, helicopter safety and escape and escape chute training.



## HELICOPTER WINCH

A variant model of our popular Man Overboard manikin, the Helicopter Winch Manikin was designed in consultation with the experts at Bristow Helicopters UK to provide a solution for training horizontal lifts from the water. It has lighter legs than the standard Man Overboard model, meaning that the legs float more readily when fitting the harness/strops in water and it will sit in a stable "W" position whilst winched to the helicopter.



## SEARCH AND RESCUE

Made in exactly the same way as the popular Man Overboard manikin, the only difference is the colour. The Search & Rescue model is deliberately designed to be difficult to see in the water to enable crews to develop the 'search' element of their Search and Rescue training, making this model particularly suitable for Police Forces or inland water rescue teams.



## BODY RECOVERY

This manikin was designed predominately to aid Police dive teams to train to recover bodies from inland waters or under ice. The realistic size and weight, combined with a face and hair, mean that this manikin is eerily close to a real body in an underwater environment - it is also visible to sonar devices.



## SURF RESCUE

This dummy was developed with the co-operation of Surf Life Saving Australia as a water rescue dummy for IRB Racing, IRB driver training and Tube Rescue practice.

In comparison to other manikins, its arms are held aloft to make it easier to spot and then drag on board a moving boat.



## POOL RESCUE

This manikin has been designed in consultation with the Royal Life Saving Society UK (RLSS) and is a revolutionary new product which allows trainee lifeguards to learn vital skills.

Once thrown into the pool, the manikin quickly sinks beneath the surface and lifeguards can train to retrieve it from the bottom, tow it to the side using a variety of towing techniques, and perfect their lifting techniques. All using one dummy, instead of switching between plastic torsos and live 'volunteers'!

As well as general lifeguard training, the Pool Rescue dummy can also be used to practice using the Pool Extraction Boards (PXB) and many lifeguards have commented on how it would be a useful piece of equipment to use for lifeguard zone visibility tests.





# WHAT OUR CUSTOMERS SAY



“Guys, training with Ruth Lee manikins is something else! It's the best way to get closer to the real difficulties of rescue.”

**Davide Gaeta, Lifeguard Trainer, ITALY**

“ For me, overseeing our lifesaving and flood patrols, being operationally fit while using “dead weights” means our volunteers are ready for the real call should it ever happen. Ruth Lee provides this opportunity. ”

Adrian Mayhew, National Operations & Safety  
SURF LIFESAVING GB



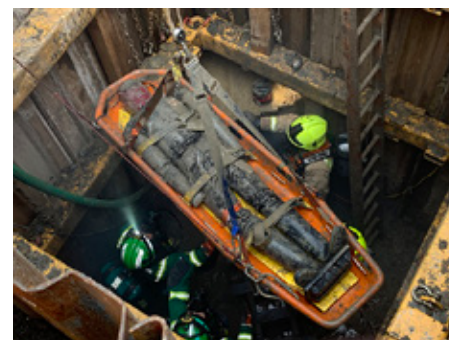
“ I would hands down recommend this training product to any aquatic facility looking to beef up the calibre of instruction or staff training. I don't rep products for money, so you know the manikin is absolutely something I can get behind as a lifeguard, trainer and instructor trainer. ”

Katie Crysdale, Company Principal  
LAKEVIEW AQUATIC CONSULTANTS, CANADA



“ As we don't want to put any of our employees at risk, especially when using a recovery stretcher, lifting etc, the use of a manikin was the right thing to do, allowing the team to practice the evacuation safely. ”

Mike Green, Senior, Health and Wellbeing Advisor  
MWH TREATMENT LIMITED, UK



“ Of great importance to us is their accurate weight-proportioning which allows for safe and balanced handling of “victims” without worrying about pinching fingers in joints or the failure of limbs to articulate properly. The customer service and support from Ruth Lee and their US Distributor has been excellent! ”

Andy Denmore, Fire Academy Coordinator  
ALLAN HANCOCK COLLEGE REGIONAL FIRE ACADEMY, USA



“ Your Water-Bariatric suit is a game changer for bariatric training. We have rigged exercises where they could not previously be set up. It has been a massive eye opener for some as to the reality of the situations they may be faced with. It is not possible to have a ‘suitable and sufficient’ rescue or evacuation plan, if you have not tried it and trained it. ”

Tony Elmsley, Managing Director  
OUTREACH RESCUE, UK



“ I congratulate you for the creation of this manikin that will be essential for emergency organizations. The design and structure of the manikin allows you to perform innumerable rescue practices and has been fantastic. ”

Patrico Valdegrama, Lifeguard Trainer  
RAL EMERGENCIAS, SPAIN





FOR PROFESSIONALS WHO SAVE LIVES

Ruth Lee Ltd

Lambert House

Glyndyfrdwy

Corwen

Denbighshire

Wales

LL21 9HW

01490 413 282

[mail@ruthlee.co.uk](mailto:mail@ruthlee.co.uk)

[www.ruthlee.co.uk](http://www.ruthlee.co.uk)

VAT No: GB 618 618 915

Company Reg No: 381490

