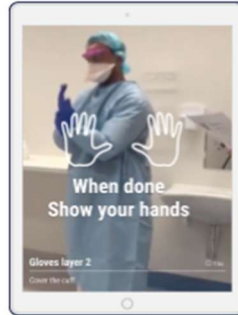


Blue Mirror Overview

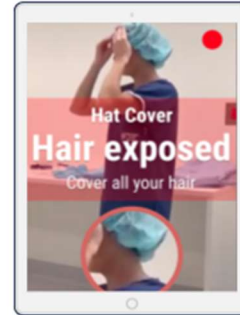
Blue Mirror is here to improve life through Artificial Intelligence (AI). We use AI to power products that can improve and save lives. Blue Mirror keeps healthcare workers and patients safer by providing a virtual PPE Instructor.



1 Presence Detection



2 Touchless Interaction



3 Immediate Feedback

All this is done in a contactless manner. Blue Mirror uses a tablet as the digital mirror and the tablet's camera back up by AI to observe the user movements. Blue Mirror also allows you to use "safety drivers", your trained people that can connect to a Blue Mirror session and observe the donning and doffing process live, interacting with the AI as decisions are made.

How Blue Mirror Works

Blue Mirror guides healthcare workers through a training donning and doffing process with visual and audio guidance. This information is overlaid on top of a digital mirror. Besides guiding, Blue Mirror also monitors the process and looks for errors, like: Back of gown open, nose exposed above mask, and no gloves detected. Those errors are shown to the user in real time on the mirror screen, enabling them to resolve the issue.

Who is using Blue Mirror

Worcestershire Acute Hospitals NHS Trust implemented Blue Mirror in May and have been undertaking a system evaluation. So far, 100% of users have confirmed they would recommend Blue Mirror for training. The results of the study is being presented at Infection Prevention Society conference in September 2021.

Bradford Teaching Hospitals NHS Foundation Trust have completed their validation process and they are now utilising Blue Mirror to first of all train their Facilities team.

Guy's & St Thomas' NHS Foundation Trust are 4 weeks into the implementation. They will be utilising Blue Mirror to train at least 500 staff on their new MAXAIR PPE system being used in their High Consequence Infectious Diseases unit.

Contact CorrMed to find out more and for a trial

Fiona Gardner – Commercial Manager

+44 (0) 7718 935 941 / +44 (0) 1452 830 269