

WORKING
WITH



THE
BEST

WELCOME TO A NEW WORKPLACE.

**You can only do your best work if you have the best tools.
And we believe that applies to the workstation as well.
Our monitors provide everything you'll need for working at
home or in the office.**

As the impact of digitalisation spreads wider, the number of computer workstations continues to grow along with the requirements of a modern workstation. We work hard day and night to not simply just meet these demands, but to surpass them.

Be it for office applications, accounting, document imaging or CAD, with the FlexScan product line – the centrepiece of EIZO’s portfolio – we offer the best solution for each and every workstation. We know exactly what you expect from an EIZO monitor: the best image quality, the best ergonomics and the best features – and you have the right to expect as much. After all, you give your utmost each

and every day – and that’s why you deserve the best partner. A partner that constantly sets new standards because they hold themselves to the same high standards as you do. A partner that knows better than anyone what’s most important in their field, right down to the last detail.

Plus, we don’t just continuously develop the best solutions, we also deliver the highest quality – which is why our FlexScan monitors come with a five-year warranty.

And that’s why we can make you a simple yet decisive promise:

Working with the best. EIZO.



HOW MUCH PROGRESS HAS YOUR COMPANY MADE IN TERMS OF DEVELOPING THE WORKSTATION OF THE FUTURE?*



*Computerwoche, ChannelPartner, CIO and TecChannel. 'How much progress has your company made in terms of developing the workstation of the future and how does this compare to other companies?' Statista, de.statista.com/statistik/daten/studie/910623/umfrage/future-workplace-selbstschatzung-von-unternehmen-zum-stand-der-entwicklung/, Accessed 5 June 2019 [in German]

QUALITY TIME — YOU DESERVE IT.

There are many things that speak for our FlexScan monitors, above all their excellent image quality.

We have a simple motto at EIZO: nothing is so perfect that it can't be improved. And it goes without saying that this holds true for image quality too. After all, as a driver of innovation and a leader in quality monitor technology, we constantly strive to make the best even better. We take charge of the entire development and manufacturing process to make sure nothing is left to chance. That means we develop

and manufacture everything ourselves and exclusively use high-quality materials for every important component. Plus, nearly every component and each individual monitor is subject to extensive testing and adjustments before delivery. We do this to make an already perfect picture even better because, ultimately, everything we do, we do with one thing in mind: your satisfaction.

WE DON'T JUST
MEET STANDARDS –
WE SET THEM.

The best technologies for
the best image.



**4K Resolution to ensure the highest
image quality**

A 4K UHD monitor from EIZO offers you the best support in the office thanks to the extraordinary display quality created by its native resolution of 3840 x 2160 pixels. The resulting image sharpness presents texts and graphic with particular clarity and precision.



**Factory adjustments and long-term tests
to ensure ultimate quality**

Your EIZO monitor has already gone through a lot by the time it arrives on your desk. That's because only devices that have been through the most thorough testing possible are allowed to be dispatched from our facilities – that means the colour temperature, gamma, white balance and brightness of each monitor are all carefully measured and adjusted. In addition, each monitor is inspected by the trained eyes of an EIZO employee. We also subject new products to numerous extended tests spanning thousands of hours of monitor usage time before production to be able to guarantee the lasting product and image quality expected from EIZO.

10-bit LUT: precise colour control

An image can only be perfect if the colours are too. This is why EIZO office monitors have a 10-bit look-up table as a minimum, which allows the colour information to be assigned much more precisely than with conventional 8-bit LUT. The finest colour gradations ensure that gradients are always perfectly displayed while also offering customised adjustment options. For example, you can adjust the white balance from 4000 K to 10000 K in 500-K intervals without any losses.



Typical monitor display with 8-bit LUT



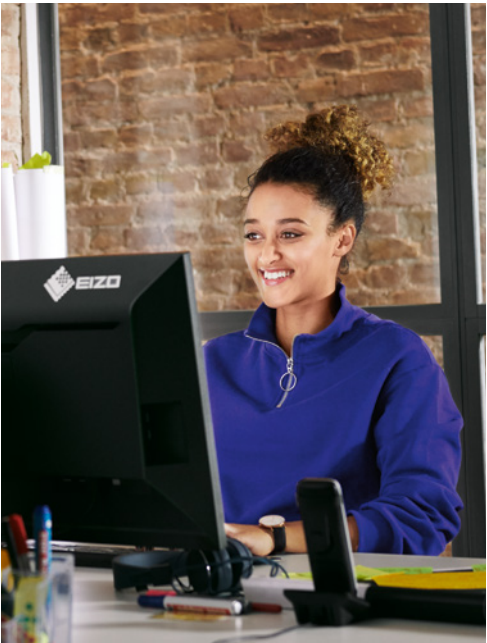
Display with 10-bit LUT

Steady viewing angle with IPS panel

The excellent viewing angle stability of the IPS panel guarantees that you will barely notice any deviation in brightness, colour, sharpness and contrast, even at a tilted viewing angle. Colours and contrasts look the same in the corners as they do in the centre of the screen.

Image processor (ASIC)

We rely on our own expertise when it comes to image processors. Our many years of experience goes into developing our own image processors (ASIC) so we are sure to get the best out of our LCD panels.



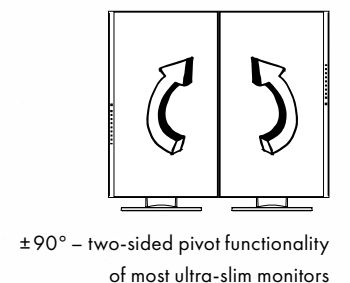
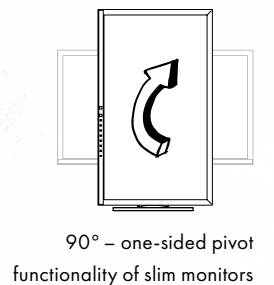
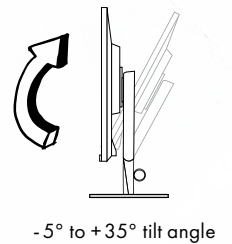
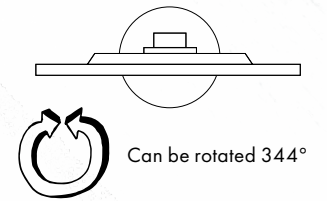
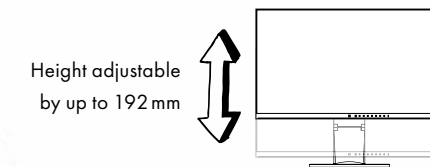
READJUST YOUR VIEW WITH EIZO.

Our FlexScan monitors ensure computer workstations are more ergonomic. So that work doesn't feel like work.

Our goal is to develop a flexible monitor that meets all the requirements of the modern workstation. After all, the digital transformation is in full swing and an increasing number of people are spending many hours sitting at their desk each day – and this can have negative consequences. A large number of people who work at computer workstations suffer from back and neck pain, while many also report having eye problems.

EIZO has found a solution to these issues. In addition to reduce eye and back strain, our

innovative high-end monitors also meet the user's unique requirements. For example, EIZO monitors can be swivelled, rotated and tilted into the position that is most comfortable for the user's posture. They also have several other ergonomic features that reduce eyestrain, thus boosting concentration. After all, we think the workstation should adapt to the person, not the other way around.



Flexible stand: make yourself comfortable

The monitor stand of the FlexScan models allows you to position the monitors ergonomically. You can tilt the screen 5° forward or 35° backward and rotate it. Depending on the model, you can rotate the display by 90° into portrait format, adjust the height by up to 192 mm and even lower it to the base plate of the stand.



FIT EYES AS STANDARD.

EIZO monitors boast intelligent features that make sure you always enjoy a constantly perfect image and your eyes stay fitter for longer.



Auto EcoView: there’s more to our monitors than meets the eye

Your monitor is always in sight – and you have the perfect set-up for your eyes. All EIZO FlexScan monitors continually utilise the Auto EcoView functionality to measure the changes in the ambient lighting conditions and automatically optimise screen brightness to tackle the problems posed by lighting conditions changing throughout the day. This reduces the amount you are blinded and also prevents the monitor from being too dark in lighter environments. The Ultra-slim and 4K monitors feature a unique two-point control panel that enables

the user to set a minimum and maximum brightness level between which the monitor automatically adjusts the screen brightness.

Day or night, light or dark – the monitor sensor automatically identifies at which level of ambient light you adjust the brightness of the monitor. When the level of ambient light then changes, the adjustment you have made is used as a basis to adjust the monitor brightness accordingly. The feature is intuitive and runs in the background without the user noticing.

Automatic colour mode: optimum images at the touch of a button

Automatic colour mode allows you to assign a specific display mode to individual applications. As soon as you open an application, the screen switches automatically to the predefined mode. Whether you are surfing the web, looking at graphics in Office or using a word processor, automatic colour mode will ensure that you are always using the best setting for the task.

Paper mode: the best setting for working

Paper mode optimises the brightness, contrast and colour temperature of the monitor, simulating the experience of reading real paper. It also reduces the levels of blue light, which significantly reduces the strain on your eyes, especially if you constantly switch between looking at a monitor and looking at paper.



Hybrid control: flicker-free images, without glare

Conventional methods used to control the back-light on monitors can cause an unpleasant flickering. The EcoView series of monitors use technology developed by EIZO, meaning they flicker far less in comparison to LED backlit monitors offered by other manufacturers. Thanks to the hybrid control, you can reduce the display brightness to less than one per cent, which enables you to work more comfortably in poorly lit environments.

Figures vary slightly according to model.

Anti-reflection coating: increasing concentration by reducing reflection

All EIZO monitors are equipped with an anti-reflection coating that reduces the amount of distracting reflections, allowing you to concentrate fully on your work without having to adopt uncomfortable positions while sitting in front of your monitor – positions that put a strain on your neck and muscles.



HIGH-END WITHOUT END: EIZO IS REDEFINING LONGEVITY.

An EIZO monitor is an investment in the future in more ways than one.

Quality stands for longevity and thus ultimately for both cost-efficiency as well as environmental protection. Why? Something that lasts a long time doesn't need to be replaced by something new as quickly, saving material and thus resources. So, an investment in quality is an excellent decision – for both you and the environment.

We believe so strongly in the quality of our monitors that we don't just promise the best quality – we even guarantee it. The proof is our five-year warranty, which eliminates follow-up costs that would accrue in the absence of a warranty scheme for things such as repairs, downtimes or the fees for replacement devices. This means our five-year warranty also ensures your investment

will continue to pay off in the future. We know precisely what our monitors do and we want them to keep it up for a long time to come. To make that happen, we need to be sure that each and every individual component is the best the market has to offer. That's why we research, develop and manufacture our products in-house and we do not outsource any of our vital work as part of our highly developed manufacturing process. The result is monitors that both meet high-end requirements and have a longer service life, while the numerous sensors and sophisticated functionalities also keep power consumption extremely low. And that brings us back to protecting the environment – and cost-efficiency, of course.

PROTECT THE ENVIRONMENT WHILE YOU WORK.

You don't waste time in the office. So don't waste kilowatt hours either.



Auto EcoView: more than just an ergonomic feature

Since Auto EcoView constantly adjusts display brightness to the ambient light, you can enjoy energy savings of up to 50 per cent in comparison with a monitor operating at full brightness.

Excellent: security and environmental sustainability

Most FlexScan models meet the requirements of the TCO Certified Generation 9 display standard and correspond to strict international guidelines for ergonomics and energy conservation pursuant to EPA ENERGY STAR and TÜV ergonomics.



EcoView Optimizer: cost savings of up to 30 per cent

EcoView Optimizer recognises image content and reduces the backlight automatically without reducing the image quality, which in turn decreases power consumption.

Does not apply to the EV2730Q and S1934 models.

Zero watts: saving energy by powering down

All FlexScan models have a mechanical power switch that results in zero-watt consumption when the monitor is switched off. But each model also uses 0.5 W or less in standby mode.

Our contribution to the Sustainable Development Goals (SDG)

As part of its corporate social responsibility (CSR) activities, EIZO is contributing towards the United Nations' Sustainable Development Goals (SDGs).

FlexScan monitors are environmentally friendly screens, with high energy efficiency, made from recycled plastics and sustainably sourced materials. The packaging is predominantly made of recycled material that can be reused in responsible recycling systems.



LONG LIVE YOUR MONITOR.

How to not just meet the highest quality requirements, but to exceed them.



Five-year warranty. No worries.

As a result of constant research, further development and painstaking quality controls, EIZO is able to offer a five-year warranty for all FlexScan models, including an on-site replacement service* – up to three years longer than typical warranties. For you, this means the highest possible investment security and lower TCO (total cost of ownership). Although the purchase price is higher, the investment and service costs are lower with an EIZO monitor because the service life is substantially longer and guarantees zero repair costs and the associated follow-up costs that would accrue in the first five years.

Research and development

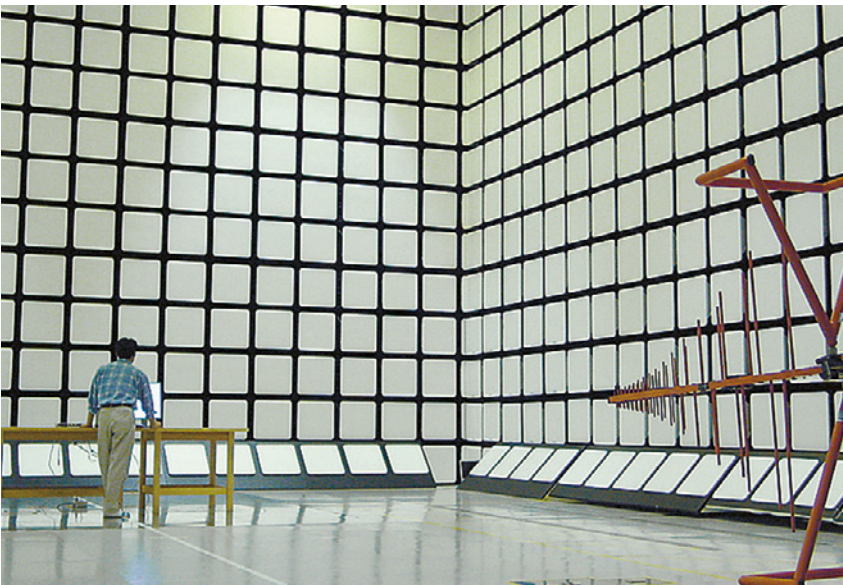
Our unique research and development department enables us to develop pioneering technologies and integrate them perfectly into our products.

Production

We manufacture our monitors ourselves by combining the latest mechanical manufacturing techniques with the most meticulous craftsmanship as this is the only way we can guarantee that our products are manufactured to the highest quality.

Quality control

We ensure that our monitors are resistant to electromagnet interference, do not emit disruptive signals and comply with international provisions in our in-house measurement laboratories. In our longevity tests, we regularly inspect the image quality of our monitors by leaving them switched on for thousands of hours.



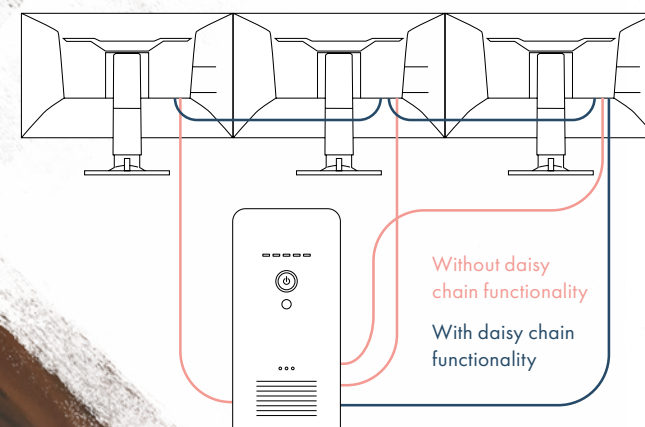
*This service is only available in some European countries. For more information visit please your local EIZO website.

WELCOME TO THE 'WHATEVER HAPPENS' OFFICE.

How to reduce clutter, increase flexibility and create a modern workplace

The modern workplace is now tidier and, more importantly, offers greater flexibility than ever before. Employees no longer need their own workplace at the office. Workstations are now increasingly shared by many people who change desks from day to day. Working at home is also playing a bigger and bigger role at modern companies. That's why it is more important than ever for users to be flexible

and have easy and convenient access to the entire IT infrastructure at all times. And EIZO delivers on both counts. Whether you're talking about docking functionalities, multi-screen solutions, KVM switches, Thin Client mounts or practical cable routing, they all help to ensure you can set up your workstation fast and easily, no matter where you are and with everything in its right place.



Daisy chain functionality

You can use USB-C or DisplayPort to connect several monitors in series. That means only one monitor needs to be connected to the computer, while the rest are then connected to one another. If you're using the USB-C port, the monitors are all interlinked via USB data cables, which significantly reduces the number of cables trailing out of the PC.

USB-C daisy chain with the EV2795 and EV2495 models; DisplayPort daisy chain with the EV2457 model.

USB-C docking

Even fewer cables, even more freedom. Certain models that feature a USB-C port even have an LAN interface and route the network connection to the attached computer via the port. This allows the monitor to function as a docking station with all the features that come with this. Users only need to connect a single cable to the computer to transmit audio, video, data and LAN signals as well as provide charging power.

LAN interface with the EV3895, EV2795 and EV2495 models.

KVM switch

Thanks to multiple USB upstream ports available on several of our monitors, they feature a built-in KVM (keyboard, video and mouse) switch and can be used as a keyboard/mouse switch. This allows, for example, a private and a company computer to share the monitor and be operated with a single keyboard and mouse when working from home.

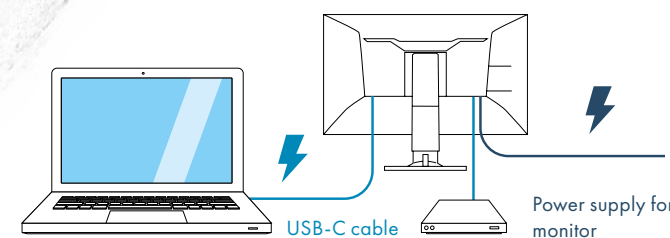
In short, the KVM switch ensures that work is uninterrupted and makes for a tidy work area.

Applies to the models EV3895, EV2795 and EV2495.

USB-C with power supply

Many FlexScan monitors feature a USB-C port. You can simultaneously transfer video or audio signals and data and charge a laptop or a smartphone, all with just one cable. An added plus: The monitor provides power to the USB-C port so there is no need for an additional AC adapter.

Applies to the EV3895, V3285, EV2795, EV2785, EV2495, EV2485 and EV2480 models.



IMPRESSIVE FEATURES. GREATER COMFORT.

Everything you need – inside and out.
Our FlexScan monitors are carefully
designed down to the last detail.

Signal ports*

The rear side of the housing offers a DisplayPort, HDMI, DVI-D, D-sub and USB-C ports as well as various connections for digital and analogue signals.



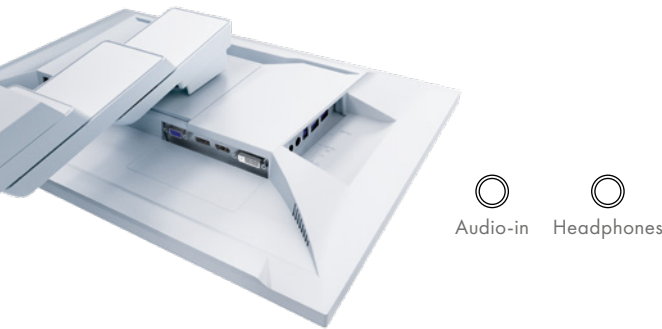
Data connection*

Each model features a USB hub with one, two or three downstream ports for peripheral USB devices.

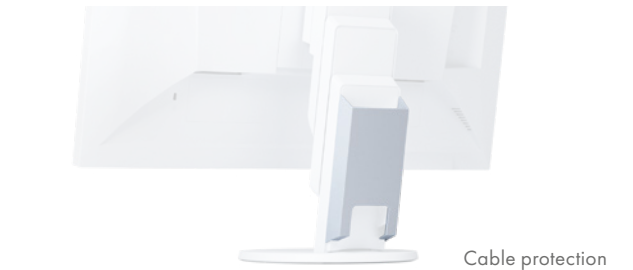


Audio output*

The speakers are integrated into the bezel and flush with the monitor. An integrated headphone connection ensures additional comfort.



*Feature varies depending on the monitor series and the model. Please see the tables starting on page 22 for more information.



Cable routing

A cable holder, clip or cable cover ensures a clean desk and prevents messy cabling, depending on the model.



Thin Client mount

There is a Thin Client mount available as an optional accessory for several EcoView monitors. It is easy to attach to the monitor base and is suited for attaching Thin Client systems with VESA mount points.



Carry handle*

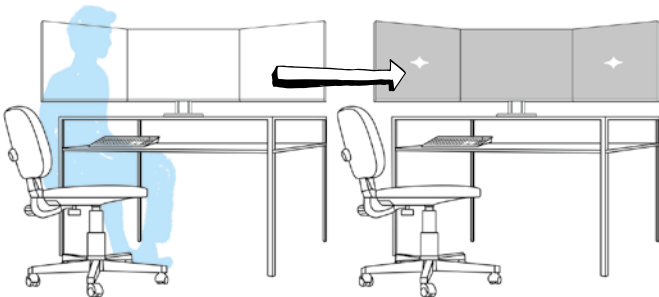
The built-in carry handle on the back of the monitor makes it easy and safe to carry the monitor when unpacking, setting up or transporting the monitor from one place to the next.

INTELLIGENT SOFTWARE FOR OPTIMAL WORK.

Screen InStyle – power consumption,
colour, brightness and other settings
can be easily managed for single monitor
or multi-monitor solutions.

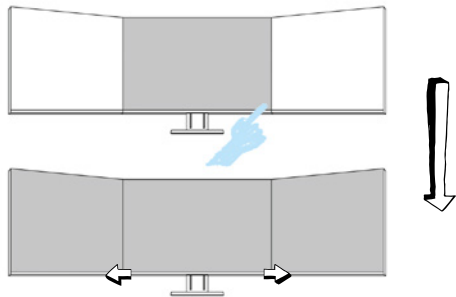
Power management with multiple monitors

Use the power button on one monitor to switch all connected screens either on or off and when monitors have a presence sensor, all monitors will automatically go into sleep mode during your absence.



Synchronisation of screen settings

Every colour setting you select on one monitor is transferred to the other monitors to ensure consistent colouring across all monitors. The automatic brightness adjustment feature is also regulated homogeneously.



Colour briefcase: personalised settings everywhere you go

Take your personalised screen settings with you to wherever you connect your laptop or tablet to a modern EIZO monitor. Your settings are easily and automatically imported when you connect your laptop via a USB-C cable to a monitor with

Screen InStyle support. This leads to improved comfort and increased work efficiency in offices that make use of hot desking or in your home office.

Automatic colour mode

You can select specific monitor settings for individual applications. Your screen automatically switches to the colour mode you defined for the application as soon as you activate it.

Input signal and colour mode selection via keyboard

Another practical functionality is the selection of the input signal via hotkey or key combination when several PCs are connected to one monitor. This allows users to work simultaneously with a laptop and PC on a single monitor and easily switch from one to the other. Depending on the monitor, this also applies to the use of Picture-by-Picture or Picture-in-Picture. Colour mode can also be changed quickly via a key combination.

Less blue light

The Circadian Dimming functionality reduces the amount of blue light and its potential impacts by lowering the colour temperature of the monitor over the course of the day.

Administrator management

System administrators can use Screen InStyle Server, the server application, to remotely administrate monitors that are connected to a computer on which Screen InStyle is installed. This means every EIZO monitor on the network can be administered centrally, enabling power consumption to be optimised without an engineer having to physically go to each monitor, for example.

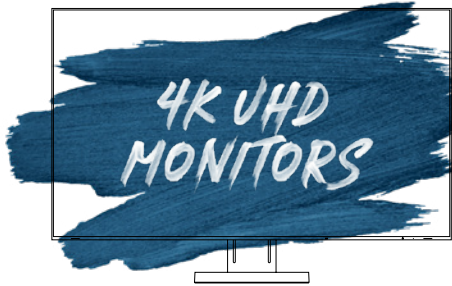
Screen InStyle is available for Ultra-slim monitors and the EV3285 and EV2785 models.

EIZO Monitor Configurator – Simply deploy basic settings.

This software allows system administrators to create and distribute monitor configurations through a USB connection. To this end, a monitor's settings can be saved as an XML file and transmitted over the network to the clients for other connected monitors.

EIZO Monitor Configurator is available for Ultra-slim monitors and the EV3285 and EV2785 models.

SERIES
OVERVIEW



	EV3285	EV2785	EV3895	EV2795	EV2760	EV2495	EV2485	EV2457	EV2456	EV2480	EV2460	EV2451	EV2360	EV2730Q	EV2430	S2133	S1934
SCREEN SIZE	31.5" Aspect ratio 16:9	27" Aspect ratio 16:9	37,5" Aspect ratio 24:10	27" Aspect ratio 16:9	27" Aspect ratio 16:9	24.1" Aspect ratio 16:10	24.1" Aspect ratio 16:10	24.1" Aspect ratio 16:10	24.1" Aspect ratio 16:10	23,8" Aspect ratio 16:9	23.8" Aspect ratio 16:9	23.8" Aspect ratio 16:9	22.5" Aspect ratio 16:10	26.5" Aspect ratio 1:1	24.1" Aspect ratio 16:10	21.3" Aspect ratio 4:3	19" Aspect ratio 5:4
RESOLUTION	3840×2160	3840×2160	3840×1600	2560×1440	2560×1440	1920×1200	1920×1200	1920×1200	1920×1200	1.920×1.080	1920×1080	1920×1080	1920×1200	1920×1920	1920×1200	1600×1200	1280×1024
MAX. BRIGHTNESS	350 cd/m²	350 cd/m²	300 cd/m²	350 cd/m²	350 cd/m²	350 cd/m²	350 cd/m²	350 cd/m²	350 cd/m²	250 cd/m²	250 cd/m²	250 cd/m²	250 cd/m²	300 cd/m²	300 cd/m²	420 cd/m²	250 cd/m²
SIGNAL INPUTS	1× USB-C 1× DisplayPort 2× HDMI	1× USB-C 1× DisplayPort 2× HDMI	1× USB-C 1× DisplayPort 2× HDMI	1× USB-C 1× DisplayPort 1× HDMI	2× DisplayPort 1× HDMI 1× DVI-D	1× USB-C 1× DisplayPort 1× HDMI	1× USB-C 1× DisplayPort 1× HDMI	1× DisplayPort 1× HDMI 1× DVI-D	1× DisplayPort 1× HDMI 1× DVI-D 1× D-sub	1× USB-C 1× DisplayPort 1× HDMI	1× DisplayPort 1× HDMI 1× DVI-D 1× D-sub	1× DisplayPort 1× HDMI 1× DVI-D 1× D-sub	1× DisplayPort 1× HDMI 1× DVI-D 1× D-sub	1× DisplayPort 1× DVI-D	1× DisplayPort 1× DVI-D 1× D-sub	1× DisplayPort 1× DVI-D 1× D-sub	1× DisplayPort 1× DVI-D 1× D-sub
USB PORTS	Upstream: 1× USB-C Downstream: 2× USB-A	Upstream: 1× USB-C Downstream: 2× USB-A	Upstream: 1× USB-C 2× USB-B Downstream: 4× USB-A	Upstream: 1× USB-C 1× USB-B Downstream: 1× USB-C 3× USB-A	Upstream: 1× USB-B Downstream: 4× USB-A	Upstream: 1× USB-C 1× USB-B Downstream: 1× USB-C 3× USB-A	Upstream: 1× USB-C Downstream: 4× USB-A	Upstream: 1× USB-B Downstream: 4× USB-A	Upstream: 1× USB-B Downstream: 2× USB-A	Upstream: 1× USB-C Downstream: 4× USB-A	Upstream: 1× USB-B Downstream: 4× USB-A	Upstream: 1× USB-B Downstream: 2× USB-A	Upstream: 1× USB-B Downstream: 2× USB-A	Upstream: 1× USB-B Downstream: 2× USB-A	Upstream: 1× USB-B Downstream: 2× USB-A	Upstream: 1× USB-B Downstream: 2× USB-A	-
DAISY CHAIN	-	-	-	Via Downstream USB-C	-	Via Downstream USB-C	-	Via Display- Port Out	-	-	-	-	-	-	-	-	-
LAN PORT	-	-	◆	◆	-	◆	-	-	-	-	-	-	-	-	-	-	-
KVM SWITCH	-	-	◆	◆	-	◆	-	-	-	-	-	-	-	-	-	-	-
STAND	Tilt range: 35° to the back 5° to the front Rotation: 344° Height adjustment: 148.9mm	Tilt range: 35° to the back 5° to the front Rotation: 344° Height adjustment: 177.9mm	Tilt range: 35° to the back 5° to the front Rotation: 70° Height adjustment: 192,7 mm	Tilt range: 35° to the back 5° to the front Rotation: 344° Height adjustment: 177 mm	Tilt range: 35° to the back 5° to the front Rotation: 344° Height adjustment: 169 mm	Tilt range: 35° to the back 5° to the front Rotation: 344° Height adjustment: 182 mm	Tilt range: 35° to the back 5° to the front Rotation: 344° Height adjustment: 182.2 mm	Tilt range: 35° to the back 5° to the front Rotation: 344° Height adjust- ment:156.8mm	Tilt range: 35° to the back 5° to the front Rotation: 344° Height adjust- ment: 158.6mm	Tilt range: 35° to the back 5° to the front Rotation: 344° Height adjust- ment: 191,2 mm	Tilt range: 35° to the back 5° to the front Rotation: 344° Height adjust- ment: 140 mm	Tilt range: 35° to the back 5° to the front Rotation: 344° Height adjust- ment: 172.7mm	Tilt range: 35° to the back 5° to the front Rotation: 344° Height adjust- ment: 140 mm	Tilt range: 35° to the back 5° to the front Rotation: 344° Height adjust- ment: 101 mm	Tilt range: 35° to the back 5° to the front Rotation: 344° Height adjust- ment: 131 mm	Tilt range: 40° to the back Rotation: 70° Height adjust- ment: 82 mm	Tilt range: 30° to the back Rotation: 70° Height adjust- ment: 100mm
FIVE-YEAR WARRANTY	◆	◆	◆	◆	◆	◆	◆	◆	◆	◆	◆	◆	◆	◆	◆	◆	◆

TECHNICAL DATA		EV3285		EV2785		EV3895		EV2795		EV2760		EV2495		EV2485		EV2457		EV2456	
		4K-UHD-Monitore				Ultra-Slim-Monitore													
Display	Type	IPS	IPS	IPS	IPS	IPS	IPS	IPS	IPS	IPS	IPS	IPS	IPS	IPS	IPS	IPS	IPS	IPS	
	Screen size	31.5"/80 cm	27"/68.5 cm	37.5"/95.3 cm	27"/68.5 cm	27"/68.5 cm	27"/68.5 cm	27"/68.5 cm	27"/68.5 cm	24.1"/61.1 cm	24.1"/61.1 cm	24.1"/61.1 cm	24.1"/61.1 cm	24.1"/61.1 cm	24.1"/61.1 cm	24.1"/61.1 cm	24.1"/61.1 cm	24.1"/61.1 cm	
	Native resolution	3840×2160 (aspect ratio 16:9)	3840×2160 (aspect ratio 16:9)	3840×1600 (aspect ratio 24:10)	2560×1440 (aspect ratio 16:9)	2560×1440 (aspect ratio 16:9)	2560×1440 (aspect ratio 16:9)	2560×1440 (aspect ratio 16:9)	2560×1440 (aspect ratio 16:9)	1920×1200 (aspect ratio 16:10)	1920×1200 (aspect ratio 16:10)	1920×1200 (aspect ratio 16:10)	1920×1200 (aspect ratio 16:10)	1920×1200 (aspect ratio 16:10)	1920×1200 (aspect ratio 16:10)	1920×1200 (aspect ratio 16:10)	1920×1200 (aspect ratio 16:10)	1920×1200 (aspect ratio 16:10)	
	Display size (H×V)	697.3×392.2 mm	596.7×335.7 mm	879.7×366.5 mm	596.7×335.7 mm	596.7×335.7 mm	596.7×335.7 mm	596.7×335.7 mm	596.7×335.7 mm	518.4×324 mm	518.4×324 mm	518.4×324 mm	518.4×324 mm	518.4×324 mm	518.4×324 mm	518.4×324 mm	518.4×324 mm	518.4×324 mm	
	Radius	–	–	2300 mm	–	–	–	–	–	–	–	–	–	–	–	–	–	–	
	Pixel pitch/pixel density	0.182×0.182 mm/140 ppi	0.155×0.155 mm/163 ppi	0.229×0.229 mm/111 ppi	0.233×0.233 mm/109 ppi	0.233×0.233 mm/109 ppi	0.233×0.233 mm/109 ppi	0.233×0.233 mm/109 ppi	0.233×0.233 mm/109 ppi	0.270×0.270 mm/94 ppi	0.270×0.270 mm/94 ppi	0.270×0.270 mm/94 ppi	0.270×0.270 mm/94 ppi	0.270×0.270 mm/94 ppi	0.270×0.270 mm/94 ppi	0.270×0.270 mm/94 ppi	0.270×0.270 mm/94 ppi	0.270×0.270 mm/94 ppi	
	Monitor gamut	16.77 million	16.77 million	16.77 million	16.77 million	16.77 million	16.77 million	16.77 million	16.77 million	16.77 million	16.77 million	16.77 million	16.77 million	16.77 million	16.77 million	16.77 million	16.77 million	16.77 million	
	Viewing angle (H/V, typical)	178°, 178°	178°, 178°	178°, 178°	178°, 178°	178°, 178°	178°, 178°	178°, 178°	178°, 178°	178°, 178°	178°, 178°	178°, 178°	178°, 178°	178°, 178°	178°, 178°	178°, 178°	178°, 178°	178°, 178°	
	Brightness (typical)	350 cd/m²	350 cd/m²	300 cd/m²	350 cd/m²	350 cd/m²	350 cd/m²	350 cd/m²	350 cd/m²	350 cd/m²	350 cd/m²	350 cd/m²	350 cd/m²	350 cd/m²	350 cd/m²	350 cd/m²	350 cd/m²	350 cd/m²	
	Contrast ratio (typical)	1300:1	1300:1	1000:1	1000:1	1000:1	1000:1	1000:1	1000:1	1000:1	1000:1	1000:1	1000:1	1000:1	1000:1	1000:1	1000:1	1000:1	
Response time (typical)	5 ms (grey-grey)	5 ms (grey-grey)	5 ms (grey-grey)	5 ms (grey-grey)	5 ms (grey-grey)	5 ms (grey-grey)	5 ms (grey-grey)	5 ms (grey-grey)	5 ms (grey-grey)	5 ms (grey-grey)	5 ms (grey-grey)	5 ms (grey-grey)	5 ms (grey-grey)	5 ms (grey-grey)	5 ms (grey-grey)	5 ms (grey-grey)	5 ms (grey-grey)		
Available housing colours	Black (EV3285-BK), white (EV3285-WT)	Black (EV2785-BK), white (EV2785-WT)	Black (EV3895-BK), white (EV3895-WT)	Black (EV2795-BK), white (EV2795-WT)	Black (EV2795-BK), white (EV2795-WT)	Black (EV2760-BK), white (EV2760-WT)	Black (EV2495-BK), white (EV2495-WT)	Black (EV2485-BK), white (EV2485-WT)	Black (EV2457-BK), white (EV2457-WT)	Black (EV2456-BK), white (EV2456-WT)	Black (EV2456-BK), white (EV2456-WT)	Black (EV2456-BK), white (EV2456-WT)	Black (EV2456-BK), white (EV2456-WT)	Black (EV2456-BK), white (EV2456-WT)	Black (EV2456-BK), white (EV2456-WT)	Black (EV2456-BK), white (EV2456-WT)	Black (EV2456-BK), white (EV2456-WT)		
Video signals	Inputs	1×USB-C (with HDCP 1.3), 1×DisplayPort (with HDCP 1.3), 2×HDMI (with HDCP 2.2/1.4)	1×USB-C (with HDCP 1.3), 1×DisplayPort (with HDCP 1.3), 2×HDMI (with HDCP 2.2/1.4)	1×USB-C (with HDCP 1.3), 1×DisplayPort (with HDCP 1.3), 2×HDMI (with HDCP 2.2/1.4)	1×USB-C (with HDCP 1.3), 1×DisplayPort (with HDCP 1.3), 1×HDMI (with HDCP 1.4)	2×DisplayPort (with HDCP 1.3), 1×HDMI (with HDCP 1.4), 1×DVI-D 24 pin (with HDCP 1.4)	1×USB-C (with HDCP 1.3), 1×DisplayPort (with HDCP 1.3), 1×HDMI (with HDCP 1.4)	1×USB-C (with HDCP 1.3), 1×DisplayPort (with HDCP 1.3), 1×HDMI (with HDCP 1.4)	1×USB-C (with HDCP 1.3), 1×DisplayPort (with HDCP 1.3), 1×HDMI (with HDCP 1.4)	1×USB-C (with HDCP 1.3), 1×DisplayPort (with HDCP 1.3), 1×HDMI (with HDCP 1.4)	1×USB-C (with HDCP 1.3), 1×DisplayPort (with HDCP 1.3), 1×HDMI (with HDCP 1.4)	1×USB-C (with HDCP 1.3), 1×DisplayPort (with HDCP 1.3), 1×HDMI (with HDCP 1.4)	1×USB-C (with HDCP 1.3), 1×DisplayPort (with HDCP 1.3), 1×HDMI (with HDCP 1.4)	1×USB-C (with HDCP 1.3), 1×DisplayPort (with HDCP 1.3), 1×HDMI (with HDCP 1.4)	1×USB-C (with HDCP 1.3), 1×DisplayPort (with HDCP 1.3), 1×HDMI (with HDCP 1.4)	1×USB-C (with HDCP 1.3), 1×DisplayPort (with HDCP 1.3), 1×HDMI (with HDCP 1.4)	1×USB-C (with HDCP 1.3), 1×DisplayPort (with HDCP 1.3), 1×HDMI (with HDCP 1.4), 1×DVI-D (with HDCP 1.4)	1×USB-C (with HDCP 1.3), 1×HDMI (with HDCP 1.4), 1×DVI-D (with HDCP 1.4), 1×D-sub 15 pin	
	Downstream	–	–	–	USB-C daisy chain	–	USB-C daisy chain	–	–	–	–	–	–	–	–	–	–	–	
	Digital (H, V)	USB-C: 31–134 kHz, 29–31 Hz, 59–61 Hz, DisplayPort: 31–134 kHz, 29–31 Hz, 59–61 Hz, HDMI: 31–135 kHz, 29–31 Hz, 49–61 Hz	USB-C: 31–134 kHz, 29–31 Hz, 59–61 Hz, DisplayPort: 31–134 kHz, 29–31 Hz, 59–61 Hz, HDMI: 31–135 kHz, 29–31 Hz, 49–61 Hz	USB-C: 31–99 kHz, 29–31 Hz, 59–61 Hz, DisplayPort: 31–99 kHz, 29–31 Hz, 59–61 Hz, HDMI: 31–99 kHz, 29–31 Hz, 49–51 Hz, 59–61 Hz	USB-C: 31–89 kHz, 59–61 Hz, DisplayPort: 31–89 kHz, 59–61 Hz, HDMI: 31–89 kHz, 49–51 Hz, 59–61 Hz	DisplayPort: 31–89 kHz, 59–61 Hz, HDMI: 31–89 kHz, 29–31 Hz, 49–51 Hz, 59–61 Hz, DVI-D: 31–89 kHz, 59–61 Hz	USB-C: 31–76 kHz, 59–61 Hz, DisplayPort: 31–76 kHz, 59–61 Hz, HDMI: 15–76 kHz, 49–51 Hz, 59–60 Hz	USB-C: 31–76 kHz, 59–61 Hz, DisplayPort: 31–76 kHz, 59–61 Hz, HDMI: 15–76 kHz, 49–51 Hz, 59–60 Hz	USB-C: 31–76 kHz, 59–61 Hz, DisplayPort: 31–76 kHz, 59–61 Hz, HDMI: 15–76 kHz, 49–51 Hz, 59–61 Hz	USB-C: 31–76 kHz, 59–61 Hz, DisplayPort: 31–76 kHz, 59–61 Hz, HDMI: 15–76 kHz, 49–51 Hz, 59–61 Hz	USB-C: 31–76 kHz, 59–61 Hz, DisplayPort: 31–76 kHz, 59–61 Hz, HDMI: 15–76 kHz, 49–51 Hz, 59–61 Hz	USB-C: 31–76 kHz, 59–61 Hz, DisplayPort: 31–76 kHz, 59–61 Hz, HDMI: 15–76 kHz, 49–51 Hz, 59–61 Hz	USB-C: 31–76 kHz, 59–61 Hz, DisplayPort: 31–76 kHz, 59–61 Hz, HDMI: 15–76 kHz, 49–51 Hz, 59–61 Hz	USB-C: 31–76 kHz, 59–61 Hz, DisplayPort: 31–76 kHz, 59–61 Hz, HDMI: 15–76 kHz, 49–51 Hz, 59–61 Hz	USB-C: 31–76 kHz, 59–61 Hz, DisplayPort: 31–76 kHz, 59–61 Hz, HDMI: 15–76 kHz, 49–51 Hz, 59–61 Hz	USB-C: 31–76 kHz, 59–61 Hz, DisplayPort: 31–76 kHz, 59–61 Hz, HDMI: 15–76 kHz, 49–51 Hz, 59–61 Hz	USB-C: 31–76 kHz, 59–61 Hz, DisplayPort: 31–76 kHz, 59–61 Hz, HDMI: 15–76 kHz, 49–51 Hz, 59–61 Hz, DVI-D: 31–76 kHz, 59–61 Hz	USB-C: 31–76 kHz, 59–61 Hz, DisplayPort: 31–76 kHz, 59–61 Hz, HDMI: 15–76 kHz, 49–51 Hz, 59–61 Hz, DVI-D: 31–76 kHz, 59–61 Hz	
	Analogue (H, V)	–	–	–	–	–	–	–	–	–	–	–	–	–	–	–	–	D-sub: 31–81 kHz, 55–76 Hz	
	Sync formats	–	–	–	–	–	–	–	–	–	–	–	–	–	–	–	–	Separate	
USB	Upstream	1×Type C, USB 3.1 Gen 1 (DisplayPort Alt Mode, max. 60 W Power Delivery)	1×Type C, USB 3.1 Gen 1 (DisplayPort Alt Mode, max. 60 W Power Delivery)	1×Type C, USB 3.1 Gen 1 (DisplayPort Alt Mode, network, max. 85 W Power Delivery) 2×Typ B, USB 3.1 Gen. 1	1×Type C, USB 3.1 Gen 1 (DisplayPort Alt Mode, network, max. 70 W Power Delivery) 1×Type B, USB 3.1 Gen 1	1×Type B, USB 3.1 Gen 1	1×Type C, USB 3.1 Gen 1 (DisplayPort Alt Mode, max. 15 W Power Delivery) 3×Type A, USB 3.1 Gen 1	4×Type A, USB 3.1 Gen 1	1×Type B, USB 3.1 Gen 1	1×Type C, USB 3.1 Gen 1 (DisplayPort Alt Mode, network, max. 70 W Power Delivery) 1×Type B, USB 3.1 Gen 1	1×Type C, USB 3.1 Gen 1 (DisplayPort Alt Mode, network, max. 70 W Power Delivery) 1×Type B, USB 3.1 Gen 1	1×Type C, USB 3.1 Gen 1 (DisplayPort Alt Mode, network, max. 70 W Power Delivery) 1×Type B, USB 3.1 Gen 1	1×Type C, USB 3.1 Gen 1 (DisplayPort Alt Mode, network, max. 70 W Power Delivery) 1×Type B, USB 3.1 Gen 1	1×Type C, USB 3.1 Gen 1 (DisplayPort Alt Mode, network, max. 70 W Power Delivery) 1×Type B, USB 3.1 Gen 1	1×Type C, USB 3.1 Gen 1 (DisplayPort Alt Mode, network, max. 70 W Power Delivery) 1×Type B, USB 3.1 Gen 1	1×Type C, USB 3.1 Gen 1 (DisplayPort Alt Mode, network, max. 70 W Power Delivery) 1×Type B, USB 3.1 Gen 1	1×Type B, USB 3.1 Gen 1	1×Type B, USB 3.1 Gen 1	
	Downstream	2×Type A, USB 3.1 Gen 1 (1×10.5 W battery charging function)	2×Type A, USB 3.1 Gen 1 (1×10.5 W battery charging function)	4×Typ A, USB 3.1 Gen. 1	1×Type C, USB 3.1 Gen 1 (DisplayPort Alt Mode, max. 15 W Power Delivery) 3×Type A, USB 3.1 Gen 1	4×Type A, USB 3.1 Gen 1	1×Type C, USB 3.1 Gen 1 (DisplayPort Alt Mode, max. 15 W power delivery) 3×Type A, USB 3.1 Gen 1	4×Type A, USB 3.1 Gen 1	1×Type C, USB 3.1 Gen 1 (DisplayPort Alt Mode, max. 15 W power delivery) 3×Type A, USB 3.1 Gen 1	1×Type C, USB 3.1 Gen 1 (DisplayPort Alt Mode, max. 15 W power delivery) 3×Type A, USB 3.1 Gen 1	1×Type C, USB 3.1 Gen 1 (DisplayPort Alt Mode, max. 15 W power delivery) 3×Type A, USB 3.1 Gen 1	1×Type C, USB 3.1 Gen 1 (DisplayPort Alt Mode, max. 15 W power delivery) 3×Type A, USB 3.1 Gen 1	1×Type C, USB 3.1 Gen 1 (DisplayPort Alt Mode, max. 15 W power delivery) 3×Type A, USB 3.1 Gen 1	1×Type C, USB 3.1 Gen 1 (DisplayPort Alt Mode, max. 15 W power delivery) 3×Type A, USB 3.1 Gen 1	1×Type C, USB 3.1 Gen 1 (DisplayPort Alt Mode, max. 15 W power delivery) 3×Type A, USB 3.1 Gen 1	1×Type C, USB 3.1 Gen 1 (DisplayPort Alt Mode, max. 15 W power delivery) 3×Type A, USB 3.1 Gen 1	4×Type A, USB 3.1 Gen 1	2×Type A, USB 3.1 Gen 1	
LAN	Network connection	–	–	RJ-45 max. 1 Gbps (Plug & Play from Win 8.1/macOS 10.12)	RJ-45 max. 1 Gbps (Plug & Play from Win 8.1/macOS 10.12)	–	RJ-45 max. 1 Gbps (Plug & Play from Win 8.1/macOS 10.12)	–	–	RJ-45 max. 1 Gbps (Plug & Play from Win 8.1/macOS 10.12)	–	–	–	–	–	–	–		
Audio	Speakers	2×1 W (front)	2×1 W (front)	2×1 W (front)	2×1 W (front)	2×1 W (front)	2×1 W (front)	2×1 W (front)	2×1 W (front)	2×1 W (front)	2×1 W (front)	2×1 W (front)	2×1 W (front)	2×1 W (front)	2×1 W (front)	2×1 W (front)	2×1 W (front)	2×1 W (front)	
	Inputs	USB-C, DisplayPort, 2×HDMI	USB-C, DisplayPort, 2×HDMI	USB-C, DisplayPort, HDMI	USB-C, DisplayPort, HDMI	USB-C, DisplayPort, HDMI	USB-C, DisplayPort, HDMI	USB-C, DisplayPort, HDMI	USB-C, DisplayPort, HDMI	USB-C, DisplayPort, HDMI	USB-C, DisplayPort, HDMI	USB-C, DisplayPort, HDMI	USB-C, DisplayPort, HDMI	USB-C, DisplayPort, HDMI	USB-C, DisplayPort, HDMI	USB-C, DisplayPort, HDMI	USB-C, DisplayPort, HDMI	USB-C, DisplayPort, HDMI	

TECHNICAL DATA

	<div>EV2480</div>	<div>EV2460</div>	<div>EV2451</div>	<div>EV2360</div>	<div>EV2730Q</div>	<div>EV2430</div>	<div>S2133</div>	<div>S1934</div>
	Ultra-Slim-Monitore				Slim-Monitore			
Display	Type	IPS	IPS	IPS	IPS	IPS	IPS	IPS
	Screen size	23.8"/60.5 cm	23.8"/60.5 cm	23.8"/60.4 cm	22.5"/57.2 cm	26.5"/67.2 cm	24.1"/61.1 cm	21.3"/54 cm
	Native resolution	1.920×1.080 (aspect ratio 16:9)	1920×1080 (aspect ratio 16:9)	1920×1080 (aspect ratio 16:9)	1920×1200 (aspect ratio 16:10)	1920×1920 (aspect ratio 1:1)	1920×1200 (aspect ratio 16:10)	1600×1200 (aspect ratio 4:3)
	Display size (H×V)	527×296.5 mm	527×296.5 mm	527×296.5 mm	488.2×297.2 mm	475.7×475.7 mm	518.4×324 mm	432×324 mm
	Pixel pitch/pixel density	0.275×0.275 mm/93 ppi	0.275×0.275 mm/93 ppi	0.275×0.275 mm/93 ppi	0.254×0.248 mm/101 ppi	0.248×0.248 mm/103 ppi	0.270×0.270 mm/94 ppi	0.270×0.270 mm/94 ppi
	Monitor gamut	16.77 million	16.77 million	16.77 million	16.77 million	16.77 million	16.77 million	16.77 million
	Viewing angle (H/V, typical)	178°, 178°	178°, 178°	178°, 178°	178°, 178°	178°, 178°	178°, 178°	178°, 178°
	Brightness (typical)	250 cd/m²	250 cd/m²	250 cd/m²	250 cd/m²	300 cd/m²	300 cd/m²	420 cd/m²
	Contrast ratio (typical)	1000:1	1000:1	1000:1	1000:1	1000:1	1000:1	1500:1
Video signals	Response time (typical)	5 ms (grey-grey)	5 ms (grey-grey)	5 ms (grey-grey)	5 ms (grey-grey)	5 ms (grey-grey)	14 ms (grey-grey)	6 ms (grey-grey)
	Available housing colours	Black (EV2480-BK), white (EV2480-WT)	Black (EV2460-BK), white (EV2460-WT)	Black (EV2451-BK), white (EV2451-WT)	Black (EV2360-BK), white (EV2360-WT)	Black (EV2730Q-BK), light grey (EV2730Q-GY)	Black (EV2430-BK), light grey (EV2430-GY)	Black (S2133-BK), light grey (S2133-GY)
	Inputs	1× USB-C (with HDCP 1.3), 1× DisplayPort (with HDCP 1.3), 1× HDMI (with HDCP 1.4)	1× DisplayPort (with HDCP 1.3), 1× HDMI (with HDCP 1.4), 1× DVI-D (with HDCP 1.4), 1× D-sub 15 pin	1× DisplayPort (with HDCP 1.3), 1× HDMI (with HDCP 1.4), 1× DVI-D (with HDCP 1.4), 1× D-sub 15 pin	1× DisplayPort (with HDCP 1.3), 1× HDMI (with HDCP 1.4), 1× D-sub, 15 pin	1× DisplayPort (with HDCP 1.3), 1× HDMI (with HDCP 1.4), 1× DVI-D (with HDCP 1.4)	1× DisplayPort (with HDCP 1.3), 1× DVI-D (with HDCP 1.4), 1× D-sub, 15 pin	1× DisplayPort (with HDCP 1.3), 1× DVI-D (with HDCP 1.4), 1× D-sub, 15 pin
	Downstream	–	–	–	–	–	–	–
	Digital (H, V)	USB-C: 31 – 68 kHz, 59 – 61 Hz, DisplayPort: 31 – 68 kHz, 59 – 61 Hz, HDMI: 31 – 68 kHz, 49 – 51 Hz, 59 – 61 Hz	DisplayPort: 31 – 68 kHz, 59 – 61 Hz, HDMI: 15 – 68 kHz, 49 – 51 Hz, 59 – 61 Hz, DVI-D: 31 – 68 kHz, 59 – 61 Hz	DisplayPort: 31 – 68 kHz, 59 – 61 Hz, HDMI: 15 – 68 kHz, 49 – 51 Hz, 59 – 61 Hz, DVI-D: 31 – 68 kHz, 59 – 61 Hz	DisplayPort: 31 – 75.5 kHz, 59 – 61 Hz, HDMI: 31 – 75.5 kHz, 49 – 51 Hz, 59 – 61 Hz	DisplayPort: 31 – 127 kHz, 29 – 31 Hz, 59 – 61 Hz, DVI-D: 31 – 127 kHz, 29 – 31 Hz, 59 – 61 Hz	DisplayPort: 31 – 76 kHz, 59 – 61 Hz, DVI-D: 31 – 76 kHz, 59 – 61 Hz	DisplayPort: 31 – 76 kHz, 59 – 61 Hz, DVI-D: 31 – 76 kHz, 59 – 61 Hz
	Analogue (H, V)	–	D-sub: 31 – 68 kHz, 59 – 61 Hz	D-sub: 31 – 81 kHz, 55 – 76 Hz	D-sub: 31 – 75.5 kHz, 59 – 61 Hz	–	D-sub: 31 – 76 kHz, 55 – 61 Hz	D-sub: 24 – 80 kHz, 49 – 76 Hz
	Sync formats	–	Separate	Separate	Separate	–	Separate	Separate
	Upstream	1× Type C, USB 3.1 Gen. 1 (DisplayPort Alt Mode, 70 W Power Delivery)	1× Type B, USB 3.1 Gen 1	1× Type B, USB 3.1 Gen 1	1× Type B, USB 3.1 Gen 1	1× Type B, USB 2.0	1× Type B, USB 2.0	1× Type B, USB 2.0
	Downstream	4× Type A, USB 3.1 Gen. 1	4× Type A, USB 3.1 Gen 1	2× Type A, USB 3.1 Gen 1	2× Type A, USB 3.1 Gen 1	2× Type A, USB 2.0	2× Type A, USB 2.0	2× Type A, USB 2.0
LAN	Network connection	–	–	–	–	–	–	–
Audio	Speakers	2× 1 W (front)	2× 1 W (front)	2× 1 W	2× 1 W (front)	2× 1 W	2× 1 W	–
	Inputs	USB-C, DisplayPort, HDMI	3.5-mm stereo jack, DisplayPort, HDMI	3.5-mm stereo jack, DisplayPort, HDMI	3.5-mm stereo jack, DisplayPort, HDMI	3.5-mm stereo jack, DisplayPort	3.5-mm stereo jack, DisplayPort	–
	Downstream	3.5-mm headphone jack	3.5-mm headphone jack	3.5-mm headphone jack	3.5-mm headphone jack	3.5-mm headphone jack	3.5-mm headphone jack	–
Power supply	Mains voltage	AC 100 – 240 V, 50/60 Hz	AC 100 – 240 V, 50/60 Hz	AC 100 – 120 V/200 – 240 V, 50/60 Hz	AC 100 – 240 V, 50/60 Hz	AC 100 – 240 V, 50/60 Hz	AC 100 – 240 V, 50/60 Hz	AC 100 – 120 V/200 – 240 V, 50/60 Hz
	Max. power consumption	142 W	50 W	42 W	37 W	64 W	36 W	45 W
	Typical power consumption	11 W	10 W	13 W	11 W	25 W	12 W	13 W
	Standby/power switch is off	Max. 0.5 W/0 W	Max. 0.5 W/0 W	Max. 0.5 W/0 W	Max. 0.5 W/0 W	Max. 0.3 W/0 W	Max. 0.3 W/0 W	Max. 0.3 W
	Energy efficiency class	C	B	D	C	F	E	E
Features and functionalities	Energy consumption/1000h	12 kWh	9 kWh	13 kWh	11 kWh	28 kWh	15 kWh	17 kWh
	Colour modes	Paper, Movie, sRGB, DICOM, User1, User2	Paper, Movie, sRGB, DICOM, User1, User2	Paper, Movie, sRGB, DICOM, User1, User2	Paper, Movie, sRGB, DICOM, User1, User2	Paper, Movie, sRGB, User1, User2	Paper, Movie, sRGB, User1, User2	Paper, Movie, sRGB, DICOM, User
	Auto EcoView	◆	◆	◆	◆	◆	◆	◆
	Look-up table	10-bit	10-bit	10-bit	10-bit	10-bit	10-bit	10-bit
	Overdrive	◆	◆	◆	◆	–	–	◆
	KVM switch	–	–	–	–	–	–	–
	Picture-in-Picture/ Picture-by-Picture	–/–	–/–	–/–	–/–	–/–	–/–	–/–
	Built-in power supply unit	◆	◆	◆	◆	◆	◆	◆
	Detachable stand	◆	◆	◆	◆	◆	◆	◆
Settings	Plug & Play	◆	◆	◆	◆	◆	◆	◆
	OSD languages	German, English, French, Italian, Japanese, Swedish, Spanish, Chinese	German, English, French, Italian, Japanese, Swedish, Spanish, Chinese	German, English, French, Italian, Japanese, Swedish, Spanish, Chinese	German, English, French, Italian, Japanese, Swedish, Spanish, Chinese	German, English, French, Italian, Japanese, Swedish, Spanish, Chinese	German, English, French, Italian, Japanese, Swedish, Spanish, Chinese	German, English, French, Italian, Japanese, Swedish, Spanish, Chinese
	Adjustable via on-screen display	Brightness, contrast, gamma, Auto EcoView, EcoView Optimizer, colour mode, colour temperature, saturation, hue, Overdrive, scaling options, volume, audio source	Brightness, contrast, gamma, Auto EcoView, EcoView Optimizer, colour mode, colour temperature, saturation, hue, Overdrive, scaling options, volume, audio source	Brightness, contrast, gamma, Auto EcoView, EcoView Optimizer, colour mode, colour temperature, saturation, hue, Overdrive, scaling options, volume, audio source	Brightness, contrast, gamma, Auto EcoView, EcoView Optimizer, colour mode, colour temperature, saturation, hue, Overdrive, scaling options, volume, audio source	Brightness, contrast, gamma, Auto EcoView, EcoView Sense, EcoView Sense, colour mode, colour temperature, saturation, hue, Overdrive, scaling options, volume, audio source	Brightness, contrast, gamma, Auto EcoView, Eco-View Optimizer, EcoView Sense, colour mode, colour temperature, saturation, hue, scaling options, volume, audio source	Brightness, contrast, gamma, Auto EcoView, colour mode, colour temperature, saturation, hue, Overdrive, scaling options
	Dimensions (W×H×D)	537.8×332.4 – 523.6×230 mm	537.8×(333.6 – 473.6)×233 mm	537.7×(322.7 – 495.4)×190 mm	499×(334.9 – 473.9)×233 mm	497×(512.5 – 613.5)×245 mm	552.5×(368 – 499)×233 mm	465×(453 – 535)×208.5 mm
	Dimensions without stand (W×H×D)	537.8×320.4×57.4 mm	537.8×320.4×53.6 mm	537.7×313.1×45.5 mm	499×321.3×53.6 mm	497×501.5×56 mm	552.5×358×56.9 mm	465×361×64 mm
	Weight with/without stand	7.4 kg/4.7 kg	5.9 kg/3.8 kg	5.5 kg/3.5 kg	5.5 kg/3.4 kg	7.1 kg/4.2 kg	6.7 kg/4.3 kg	8.6 kg/5.6 kg
	Height adjustment	191.2 mm	140 mm	172.7 mm	140 mm	101 mm	131 mm	82 mm
	Tilt	35° to the back, 5° to the front	35° to the back, 5° to the front	35° to the back, 5° to the front	35° to the back, 5° to the front	35° to the back, 5° to the front	35° to the back, 5° to the front	40° to the back
	Rotatability	344°	344°	344°	344°	344°	344°	70°
Certifications and standards	Pivot	90° (clockwise and anti-clockwise)	90° (clockwise and anti-clockwise)	90° (clockwise and anti-clockwise)	90° (clockwise and anti-clockwise)	–	90° (clockwise)	90° (clockwise)
	VESA attachment	100×100 mm	100×100 mm	100×100 mm	100×100 mm	100×100 mm	100×100 mm	100×100 mm
		CE, CB, TCO Certified Generation 9, EPA ENERGY STAR, TÜV/GS, TÜV certified ergonomics (including ISO 9241-307*), TÜV/Blue Low Light Content, TÜV/Flicker free, EPEAT 2018 (US), cTÜVus, TÜV/S, EAC, PSE, FCC-B, CAN ICES-3(B), RCM, VCCI-B, CCC, RoHS, China RoHS, WEEE	CE, CB, TCO Certified Generation 9, EPA ENERGY STAR, TÜV/GS, TÜV certified ergonomics (including ISO 9241-307*), TÜV/Blue Low Light Content, TÜV/Flicker free, EPEAT 2018 (US), cTÜVus, TÜV/S, EAC, PSE, FCC-B, CAN ICES-3(B), RCM, VCCI-B, CCC, RoHS, China RoHS, WEEE	CE, CB, TCO certified 8.0, EPA ENERGY STAR, TÜV/GS, TÜV certified ergonomics (including ISO 9241-307*), TÜV/Low blue light content, TÜV/Flicker free, EPEAT 2018 (US), cTÜVus, TÜV/S, EAC, PSE, FCC-B, CAN ICES-3(B), RCM, VCCI-B, CCC, RoHS, China RoHS, WEEE	CE, CB, TCO Certified Generation 9, EPA ENERGY STAR, TÜV/GS, TÜV certified ergonomics (including ISO 9241-307*), TÜV/Low blue light content, TÜV/Flicker free, EPEAT 2018 (US), cTÜVus, TÜV/S, EAC, PSE, FCC-B, CAN ICES-3(B), RCM, VCCI-B, CCC, RoHS, China RoHS, WEEE	CE, CB, TÜV/GS, TÜV certified ergonomics (including ISO 9241-307*), TÜV/Low blue light content, TÜV/Flicker free, cTÜVus, TÜV/S, EAC, PSE, FCC-B, CAN ICES-3(B), RCM, VCCI-B, CCC, RoHS, China RoHS, WEEE	CE, CB, TCO certified 8.0, EPA ENERGY STAR, TÜV/GS, TÜV certified ergonomics (including ISO 9241-307*), TÜV/Low blue light content, TÜV/Flicker free, EPEAT 2018 (US), cTÜVus, TÜV/S, EAC, PSE, FCC-B, CAN ICES-3(B), RCM, VCCI-B, CCC, RoHS, China RoHS, WEEE	CE, CB, EPA ENERGY STAR, TÜV/GS, TÜV certified ergonomics (including ISO 9241-307*), cTÜVus, TÜV/S, EAC, FCC-B, CAN ICES-3(B), RCM, VCCI-B, CCC, RoHS, China RoHS, WEEE
		CE, CB, TCO certified 8.0, EPA ENERGY STAR, TÜV/GS, TÜV certified ergonomics (including ISO 9241-307*), cTÜVus, TÜV/S, EAC, PSE, FCC-B, CAN ICES-3(B), RCM, VCCI-B, CCC, RoHS, China RoHS, WEEE	CE, CB, TCO certified 8.0, EPA ENERGY STAR, TÜV/GS, TÜV certified ergonomics (including ISO 9241-307*), cTÜVus, TÜV/S, EAC, PSE, FCC-B, CAN ICES-3(B), RCM, VCCI-B, CCC, RoHS, China RoHS, WEEE	CE, CB, TCO certified 8.0, EPA ENERGY STAR, TÜV/GS, TÜV certified ergonomics (including ISO 9241-307*), cTÜVus, TÜV/S, EAC, PSE, FCC-B, CAN ICES-3(B), RCM, VCCI-B, CCC, RoHS, China RoHS, WEEE	CE, CB, TCO Certified Generation 9, EPA ENERGY STAR, TÜV/GS, TÜV certified ergonomics (including ISO 9241-307*), TÜV/Low blue light content, TÜV/Flicker free, EPEAT 2018 (US), cTÜVus, TÜV/S, EAC, PSE, FCC-B, CAN ICES-3(B), RCM, VCCI-B, CCC, RoHS, China RoHS, WEEE	CE, CB, TÜV/GS, TÜV certified ergonomics (including ISO 9241-307*), TÜV/Low blue light content, TÜV/Flicker free, cTÜVus, TÜV/S, EAC, PSE, FCC-B, CAN ICES-3(B), RCM, VCCI-B, CCC, RoHS, China RoHS, WEEE	CE, CB, TCO certified 8.0, EPA ENERGY STAR, TÜV/GS, TÜV certified ergonomics (including ISO 9241-307*), TÜV/Low blue light content, TÜV/Flicker free, EPEAT 2018 (US), cTÜVus, TÜV/S, EAC, PSE, FCC-B, CAN ICES-3(B), RCM, VCCI-B, CCC, RoHS, China RoHS, WEEE	CE, CB, EPA ENERGY STAR, TÜV/GS, TÜV certified ergonomics (including ISO 9241-307*), cTÜVus, TÜV/S, EAC, FCC-B, CAN ICES-3(B), RCM, VCCI-B, CCC, RoHS, China RoHS, WEEE
		CE, CB, TCO certified 8.0, EPA ENERGY STAR, TÜV/GS, TÜV certified ergonomics (including ISO 9241-307*), cTÜVus, TÜV/S, EAC, PSE, FCC-B, CAN ICES-3(B), RCM, VCCI-B, CCC, RoHS, China RoHS, WEEE	CE, CB, TCO certified 8.0, EPA ENERGY STAR, TÜV/GS, TÜV certified ergonomics (including ISO 9241-307*), cTÜVus, TÜV/S, EAC, PSE, FCC-B, CAN ICES-3(B), RCM, VCCI-B, CCC, RoHS, China RoHS, WEEE	CE, CB, TCO certified 8.0, EPA ENERGY STAR, TÜV/GS, TÜV certified ergonomics (including ISO 9241-307*), cTÜVus, TÜV/S, EAC, PSE, FCC-B, CAN ICES-3(B), RCM, VCCI-B, CCC, RoHS, China RoHS, WEEE	CE, CB, TCO Certified Generation 9, EPA ENERGY STAR, TÜV/GS, TÜV certified ergonomics (including ISO 9241-307*), TÜV/Low blue light content, TÜV/Flicker free, EPEAT 2018 (US), cTÜVus, TÜV/S, EAC, PSE, FCC-B, CAN ICES-3(B), RCM, VCCI-B, CCC, RoHS, China RoHS, WEEE	CE, CB, TÜV/GS, TÜV certified ergonomics (including ISO 9241-307*), TÜV/Low blue light content, TÜV/Flicker free, cTÜVus, TÜV/S, EAC, PSE, FCC-B, CAN ICES-3(B), RCM, VCCI-B, CCC, RoHS, China RoHS, WEEE	CE, CB, TCO certified 8.0, EPA ENERGY STAR, TÜV/GS, TÜV certified ergonomics (including ISO 9241-307*), TÜV/Low blue light content, TÜV/Flicker free, EPEAT 2018 (US), cTÜVus, TÜV/S, EAC, PSE, FCC-B, CAN ICES-3(B), RCM, VCCI-B, CCC, RoHS, China RoHS, WEEE	CE, CB, EPA ENERGY STAR, TÜV/GS, TÜV certified ergonomics (including ISO 9241-307*), cTÜVus, TÜV/S, EAC, FCC-B, CAN ICES-3(B), RCM, VCCI-B, CCC, RoHS, China RoHS, WEEE
		CE, CB, TCO certified 8.0, EPA ENERGY STAR, TÜV/GS, TÜV certified ergonomics (including ISO 9241-307*), cTÜVus, TÜV/S, EAC, PSE, FCC-B, CAN ICES-3(B), RCM, VCCI-B, CCC, RoHS, China RoHS, WEEE	CE, CB, TCO certified 8.0, EPA ENERGY STAR, TÜV/GS, TÜV certified ergonomics (including ISO 9241-307*), cTÜVus, TÜV/S, EAC, PSE, FCC-B, CAN ICES-3(B), RCM, VCCI-B, CCC, RoHS, China RoHS, WEEE	CE, CB, TCO certified 8.0, EPA ENERGY STAR, TÜV/GS, TÜV certified ergonomics (including ISO 9241-307*), cTÜVus, TÜV/S, EAC, PSE, FCC-B, CAN ICES-3(B), RCM, VCCI-B, CCC, RoHS, China RoHS, WEEE	CE, CB, TCO Certified Generation 9, EPA ENERGY STAR, TÜV/GS, TÜV certified ergonomics (including ISO 9241-307*), TÜV/Low blue light content, TÜV/Flicker free, EPEAT 2018 (US), cTÜVus, TÜV/S, EAC, PSE, FCC-B, CAN ICES-3(B), RCM, VCCI-B, CCC, RoHS, China RoHS, WEEE	CE, CB, TÜV/GS, TÜV certified ergonomics (including ISO 9241-307*), TÜV/Low blue light content, TÜV/Flicker free, cTÜVus, TÜV/S, EAC, PSE, FCC-B, CAN ICES-3(B), RCM, VCCI-B, CCC, RoHS, China RoHS, WEEE	CE, CB, TCO certified 8.0, EPA ENERGY STAR, TÜV/GS, TÜV certified ergonomics (including ISO 9241-307*), TÜV/Low blue light content, TÜV/Flicker free, EPEAT 2018 (US), cTÜVus, TÜV/S, EAC, PSE, FCC-B, CAN ICES-3(B), RCM, VCCI-B, CCC, RoHS, China RoHS, WEEE	CE, CB, EPA ENERGY STAR, TÜV/GS, TÜV certified ergonomics (including ISO 9241-307*), cTÜVus, TÜV/S, EAC, FCC-B, CAN ICES-3(B), RCM, VCCI-B, CCC, RoHS, China RoHS, WEEE
		CE, CB, TCO certified 8.0, EPA ENERGY STAR, TÜV/GS, TÜV certified ergonomics (including ISO 9241-307*), cTÜVus, TÜV/S, EAC, PSE, FCC-B, CAN ICES-3(B), RCM, VCCI-B, CCC, RoHS, China RoHS, WEEE	CE, CB, TCO certified 8.0, EPA ENERGY STAR, TÜV/GS, TÜV certified ergonomics (including ISO 9241-307*), cTÜVus, TÜV/S, EAC, PSE, FCC-B, CAN ICES-3(B), RCM, VCCI-B, CCC, RoHS, China RoHS, WEEE	CE, CB, TCO certified 8.0, EPA ENERGY STAR, TÜV/GS, TÜV certified ergonomics (including ISO 9241-307*), cTÜVus, TÜV/S, EAC, PSE, FCC-B, CAN ICES-3(B), RCM, VCCI-B, CCC, RoHS, China RoHS, WEEE	CE, CB, TCO Certified Generation 9, EPA ENERGY STAR, TÜV/GS, TÜV certified ergonomics (including ISO 9241-307*), TÜV/Low blue light content, TÜV/Flicker free, EPEAT 2018 (US), cTÜVus, TÜV/S, EAC, PSE, FCC-B, CAN ICES-3(B), RCM, VCCI-B, CCC, RoHS, China RoHS, WEEE	CE, CB, TÜV/GS, TÜV certified ergonomics (including ISO 9241-307*), TÜV/Low blue light content, TÜV/Flicker free, cTÜVus, TÜV/S, EAC, PSE, FCC-B, CAN ICES-3(B), RCM, VCCI-B, CCC, RoHS, China RoHS, WEEE	CE, CB, TCO certified 8.0, EPA ENERGY STAR, TÜV/GS, TÜV certified ergonomics (including ISO 9241-307*), TÜV/Low blue light content, TÜV/Flicker free, EPEAT 2018 (US), cTÜVus, TÜV/S, EAC, PSE, FCC-B, CAN ICES-3(B), RCM, VCCI-B, CCC, RoHS, China RoHS, WEEE	CE, CB, EPA ENERGY STAR, TÜV/GS, TÜV certified ergonomics (including ISO 9241-307*), cTÜVus, TÜV/S, EAC, FCC-B, CAN ICES-3(B), RCM, VCCI-B, CCC, RoHS, China RoHS, WEEE
		CE, CB, TCO certified 8.0, EPA ENERGY STAR, TÜV/GS, TÜV certified ergonomics (including ISO 9241-307*), cTÜVus, TÜV/S, EAC, PSE, FCC-B, CAN ICES-3(B), RCM, VCCI-B, CCC, RoHS, China RoHS, WEEE	CE, CB, TCO certified 8.0, EPA ENERGY STAR, TÜV/GS, TÜV certified ergonomics (including ISO 9241-307*), cTÜVus, TÜV/S, EAC, PSE, FCC-B, CAN ICES-3(B), RCM, VCCI-B, CCC, RoHS, China RoHS, WEEE	CE, CB, TCO certified 8.0, EPA ENERGY STAR, TÜV/GS, TÜV certified ergonomics (including ISO 9241-307*), cTÜVus, TÜV/S, EAC, PSE, FCC-B, CAN ICES-3(B), RCM, VCCI-B, CCC, RoHS, China RoHS, WEEE	CE, CB, TCO Certified Generation 9, EPA ENERGY STAR, TÜV/GS, TÜV certified ergonomics (including ISO 9241-307*), TÜV/Low blue light content, TÜV/Flicker free, EPEAT 2018 (US), cTÜVus, TÜV/S, EAC, PSE, FCC-B, CAN ICES-3(B), RCM, VCCI-B, CCC, RoHS, China RoHS, WEEE	CE, CB, TÜV/GS, TÜV certified ergonomics (including ISO 9241-307*), TÜV/Low blue light content, TÜV/Flicker free, cTÜVus, TÜV/S, EAC, PSE, FCC-B, CAN ICES-3(B), RCM, VCCI-B, CCC, RoHS, China RoHS, WEEE	CE, CB, TCO certified 8.0, EPA ENERGY STAR, TÜV/GS, TÜV certified ergonomics (including ISO 9241-307*), TÜV/Low blue light content, TÜV/Flicker free, EPEAT 2018 (US), cTÜVus, TÜV/S, EAC, PSE, FCC-B, CAN ICES-3(B), RCM, VCCI-B, CCC, RoHS, China RoHS, WEEE	CE, CB, EPA ENERGY STAR, TÜV/GS, TÜV certified ergonomics (including ISO 9241-307*), cTÜVus, TÜV/S, EAC, FCC-B, CAN ICES-3(B), RCM, VCCI-B, CCC, RoHS, China RoHS, WEEE
Accessories	Accessories included	Power cable, signal cable (USB-C – USB-C), Set-up Guide	Power cable, signal cable (DisplayPort to DisplayPort), USB cable, Set-up Guide	Power cable, signal cable (DisplayPort to DisplayPort), USB cable, cable guard, Set-up Guide	Power cable, signal cable (DisplayPort to DisplayPort), USB cable, Set-up Guide	Power cable, signal cable (DisplayPort to DisplayPort, DVI-D to DVI-D), Set-up Guide	Power cable, signal cable (DisplayPort to DisplayPort, DVI-D to DVI-D), Set-up Guide	Power cable, signal cable (DVI-D to DVI-D, D-sub to D-sub), USB cable, Setup Guide
	Downloads	User's manual, EIZO Screen InStyle software for Windows	User's manual, EIZO Screen InStyle software for Windows	User's manual, EIZO Screen InStyle software for Windows	User's manual, EIZO Screen InStyle software for Windows	User's manual	User's manual	User's manual
Warranty		Five years** with an on-site exchange service	Five years** with an on-site exchange service	Five years** with an on-site exchange service	Five-year** on-site replacement service	Five years** with an on-site exchange service	Five years** with an on-site exchange service	Five years** with an on-site exchange service

* Zero pixel error guarantee for fully illuminated sub-pixels (partial image elements ISO 9241-307). Valid: six months from the date of purchase.
** Maximum of 30,000 hours of monitor usage time.

WORKING WITH THE BEST.

Well-known companies around the world rely on EIZO's FlexScan monitors.

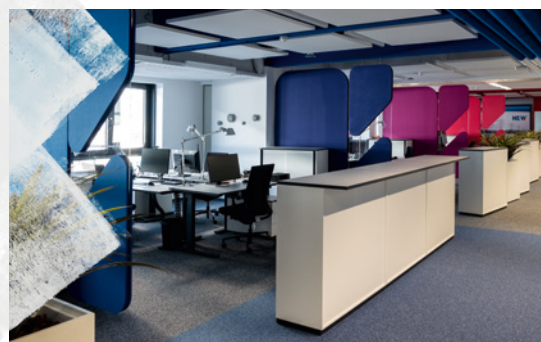


HAUCK &
AUFHÄUSER
GERMANY

Products used: FlexScan EV2460

To make it as easy as possible for employees to switch between the bank and home office, Hauck & Aufhäuser's IT department uses the same hardware setup for both workplaces: laptop, keyboard, mouse, headset, docking station and up to two FlexScan EV2460 monitors. Especially when several applications are displayed simultaneously, the additional 24-inch monitor next to the laptop makes work much easier. For example, when working with Excel spreadsheets or comparing several documents.

NEW AG
GERMANY



Product used: FlexScan EV2795

In order to enable its employees to work on the move, regardless of location, the municipal services company NEW is equipping its new "Modern Workplaces" with the EIZO FlexScan EV2795 model, which can also be used as a docking and charging station thanks to its USB-C port. All workplaces are to be equipped accordingly by 2022. More than 1800 EV2795 monitors will then be in use.

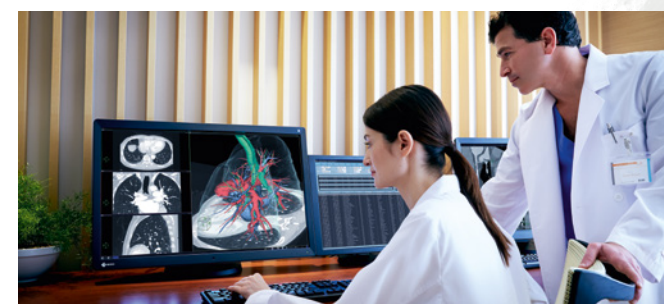
OUR ENTIRE RANGE.

EIZO offers monitors for a wide variety of industries and application areas. While our FlexScan monitors are particularly suited for office use, other work areas require quite different specialisations.



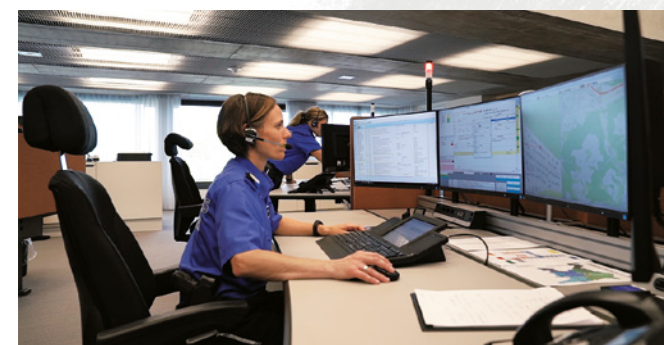
ColorEdge

The EIZO ColorEdge series was developed specifically to meet the high requirements of creative users who work with photos, films and graphics. ColorEdge monitors are the specialists when it comes to colours, calibration and precision. They guarantee an unadulterated look to the files and make it possible to work with total colour accuracy.



CuratOR & RadiForce

CuratOR from EIZO offers complete medical solutions for modern operating theatres. RadiForce series of medical monitors meet the high requirements demanded by the fields of diagnostics and medical review.



DuraVision

The durable and reliable DuraVision monitors are best-suited to 24-hour operation and are used in maritime and industrial environments, as well as security and surveillance systems.



Raptor & Re/Vue

EIZO offers the most comprehensive range of monitors, recording and streaming solutions and graphics boards for air traffic control centres and towers, as well as training and simulation equipment for air traffic controllers. The numerous configuration options meet the requirements for any installation.

Austria, Hungary, Romania & Bulgaria
EIZO Austria GmbH

Pfarrgasse 87
1230 Wien
Phone: +43 1 6152886-10
www.eizo.at, www.eizo.hu

Belgium & Luxembourg
EIZO Europe GmbH

Antwerpsesteenweg 22
2860 Sint-Katelijne-Waver (Mechelen)
Phone: +32 15 645511
www.eizo.be

Czech Republic & Slovakia
EIZO Europe GmbH

Meteor Centre Office Park "B"
Sokolovská 100/94
186 00 Praha 8
Phone: +420 222 319 714
www.eizo.cz, www.eizomonitor.sk

Germany
EIZO Europe GmbH

Belgrader Straße 2
41069 Mönchengladbach
Phone: +49 2161 8210-0
www.eizo.de

Italy
EIZO Europe GmbH

Via Torino, 3/5
20814 – Varedo (MB)
Phone: +39 0362 1695250
www.eizo.it

The Netherlands
EIZO Europe GmbH

Dr. Holtropaan 34-36
5652 XR Eindhoven
Phone: +31 40 7600-360
www.eizo.nl

Scandinavia & Russia
EIZO Nordic AB

Lövängsvägen 14
SE-194 05 Upplands Väsby
Phone: +46 8 594 105 00
www.eizo.se

Switzerland
EIZO AG

Moosacherstrasse 6, Au
8820 Wädenswil
Phone: +41 44 782 24 40
www.eizo.ch

United Kingdom
EIZO Limited

1 Queens Square
Ascot Business Park
Lyndhurst Road
Ascot | Berkshire
SL5 9FE
Phone: +44 1344 317 480
www.eizo.co.uk