

REDTRONIC

VEHICLE WARNING AND SAFETY SOLUTIONS



MANUFACTURED IN THE
UNITED KINGDOM



PARAMEDIC



+44 (0)1422 310999



INFO@REDTRONIC.CO.UK



WWW.REDTRONIC.CO.UK



LIGHTBARS

BEACONS

MINIBARS

DIRECTIONALS

WORKLAMPS

SIRENS

SPEAKERS

SWITCHES

AUXILIARY



MANUFACTURED IN THE
UNITED KINGDOM

Introduction: Our mission is to provide a product and service that resolves industry challenges. It's not just a warning signal, it's a lifesaving solution to millions of exceptional professionals worldwide. By thinking differently to others and developing high quality, distinctive products. The products featured are suitable for paramedic vehicles. For our complete range please visit our website www.redtronic.co.uk.

LIGHTBARS



LED colour options: single, tri and multi colour

Module options: LED alley lights, rear reds, worklamps, flood lamps, stop tail turn, indicators, takedowns, steady burn single GATSO (blue)

Features: rotating flash pattern, 360° white light, cruise lights, traffic director, flexi-flash, 9 programmable inputs, night & day (DIM mode), R65 monitor output, aerodynamic drag 1.45mpg

Length options: 55cm, 71cm, 88cm, 105cm, 121cm, 138cm, 154cm, 171cm, 187cm, 204cm

Lens colours: blue, amber, clear (clear bottom lens only)

Flash patterns: 19 Standard flash patterns (including 2 'rotate' patterns)

Voltage: 11-32VDC

Approvals: R65 class II (blue and amber), EMC R10, CAP168/ICAO, IP69K

Warranty: 5 year warranty



*optional internal speaker / siren

LED colour options: single, tri and multi colour

Module options: LED alley lights, rear reds, worklamps, flood lamps, stop tail turn, indicators, centre illumination, takedowns, steady burn single GATSO (blue)

Features: cruise lights, traffic director, *internal speaker / siren / PA, night & day (DIM mode)

Length options: 55cm, 65cm, 82cm, 93cm, 110cm, 120cm, 138cm, 148cm, 165cm, 175cm, 193cm, 203cm

Lens colours: blue, amber, clear (clear or blue bottom lens available) (opal or black middle lens available)

Flash patterns: 6 Standard Flash Patterns

Voltage: 11-32VDC

Approvals: R65 class II (blue) class I (amber), EMC R10, CAP168/ICAO, IP54 (IP69K rated Internal LED Modules)

Warranty: 5 year warranty

PARAMEDIC

DIRECTIONALS



LED colour options: single and tri



Dimensions: Diameter 34mm x Depth 22mm

Flash Patterns: 7 flash patterns

Voltage: 11-32VDC

Amps: 630mA @12VDC

Approvals: R65 class I (blue and amber)

EMC R10, CAP168/ICAO, IP69K

Warranty: 2 year warranty



LED colour options: single and tri



Dimensions: L 118mm x D 13.4mm x W 13.6mm

Flash Patterns: 7 flash patterns

Voltage: 11-32VDC

Amps: 630mA @12VDC

Approvals: R65 class II (blue and amber) EMC R10,

CAP168/ICAO, IP69K

Warranty: 2 year warranty



LED colour options: single



Dimensions: D 23mm

Flash patterns: 7 flash patterns

Voltage: 11-32VDC

Amps: 630mA @12VDC

Approvals: R65 class I (blue)

EMC R10, CAP168/ICAO, IP69K

Warranty: 2 year warranty



LED colour options: single



Dimensions: L 73.5mm x H 24mm x D 17.6mm

Flash patterns: 7 flash patterns

Voltage: 11-32VDC

Amps: 500mA @12VDC

Approvals: R65 class I (blue and amber)

EMC R10, CAP168/ICAO, IP69K

Warranty: 2 year warranty



LED colour options: single



Dimensions: L 122.7mm x H 24mm x D 17.6mm

Flash patterns: 7 flash patterns

Voltage: 11-32VDC

Amps: 700mA @12VDC

Approvals: R65 class II (blue and amber)

EMC R10, CAP168/ICAO, IP69K

Warranty: 2 year warranty

MICRO-LITE 4



LED colour options: single



Dimensions: L 60mm x H 23mm x D 9mm

Flash patterns: 7 flash patterns

Voltage: 11-30VDC

Amps: 400mA @12VDC

Approvals: EMC R10, IP66

Warranty: 2 year warranty



GECKO 6 GRILLE LAMP



STAR-M1



MICROLITE



LIGHTBARS

BEACONS

MINIBARS

DIRECTIONALS

WORKLAMPS

SIRENS

SPEAKERS

SWITCHES

AUXILIARY



MANUFACTURED IN THE
UNITED KINGDOM

AUXILIARY



LED colour options: single



Dimensions: L530mm x H 121mm x D 25mm

Flash patterns: 6 flash patterns

Voltage: 11-32VDC

Amps: 1.4 Amps @12VDC

Approvals: R65 class II (blue and amber)

EMC R10, IP69K

Warranty: 2 year warranty

FX DASH MOUNT



LED colour options: single and dual



Dimensions: L 166mm x H 115mm x D 96mm

Flash patterns: 10 flash patterns

Voltage: 11-32VDC

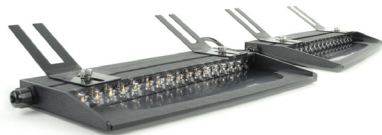
Amps: 700-900mA @12VDC

Approvals: R65 class I (amber) class II (blue)

EMC R10, IP63

Warranty: 2 year warranty

ULTRA-SLIM INTERNAL LIGHTBAR



LED colour options: single



Dimensions: L 310mm x W 61mm x D 38mm

Flash patterns: 12 flash patterns

Voltage: 11-32VDC

Amps: 4.2 Amps @12VDC

Approvals: EMC R10, CAP168 / ICAO, IP63

Warranty: 2 year warranty



LED colour options: single and multi



Dimensions: L255mm x W 179mm x D 47mm

Flash patterns: 6-10 flash patterns

Voltage: 11-32VDC

Amps: 2.2 Amps @12VDC

Approvals: R65 class II (blue) class I (amber)

EMC R10, CAP168/ICAO, IP66

Warranty: 2 year warranty



LED colour options: single



Dimensions: L 238.6 mm x W 115mm x D 53.7mm

Flash patterns: 12 flash patterns

Voltage: 11-32VDC

Amps: 1.4 Amps @12VDC

Approvals: R65 class II (blue and amber)

EMC R10, IP63

Warranty: 2 year warranty

TRAFFIC DIRECTOR / WARNING



LED colour options: single, tri and multi



Dimensions: L Various x W65mm x 36mm

Flash patterns: 16 flash patterns

Voltage: 11-32VDC

Amps: 1.4amps at 12VDC (increases with size)

Approvals: R65 class II (amber and blue)

EMC R10, CAP168 / ICAO, IP69K

Warranty: 2 year warranty

PARAMEDIC

AUXILIARY AND CONTROLLERS

FORNADO B47



LED colour options: single and multi



3 bolt dimensions: H 47mm x D154 mm

Flash patterns: 10 flash patterns

Lens colour options: blue, amber, clear

Voltage: 11-32VDC

Amps: 1.7 Amps @12VDC

Approvals: R65 class II blue and amber, R65 class I red, EMC R10, CAP168/ICAO, IP66

Warranty: 2 year warranty



Features: programmable RGB switches, momentary or latching functions and hierarchy and master switch selection

Dimensions: L 76mm x W 54mm x D 22mm

Switches: 4 dynamic switches

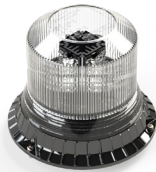
Switch colour: red, amber, green, blue, white

Voltage: 12 and 24VDC

Approvals: EMC R10, IP52

Warranty: 2 year warranty

FORNADO B110



LED colour options: single



3 bolt dimensions: H 110mm x D 142mm

Flash patterns: 7 flash patterns

Lens colour options: blue, amber, clear

Voltage: 11-32VDC

Amps: 2 Amps @12VDC

Approvals: R65 class I (blue and amber) EMC R10, CAP168/ICAO, CISPR 25 Level 3, IP69K

Warranty: 2 year warranty



Features: programmable RGB switches, momentary or latching functions, hierarchy and master switch selection, traffic director LED signal bar and 999 & kill switch feature

Dimensions: L 116mm x W 54mm x D 21mm

Switches: 6 dynamic switches and traffic director

Switch colour: red, amber, green, blue, white

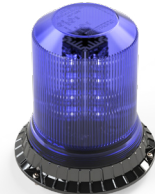
Voltage: 12 and 24VDC

Amps: 23amps

Approvals: EMC R10, IP52

Warranty: 2 year warranty

FORNADO B150



LED colour options: single



3 bolt dimensions: H 150mm x D 142mm

Flash patterns: 7 flash patterns

Lens colour options: blue, amber, clear

Voltage: 11-32VDC

Amps: 2 Amps @12VDC

Approvals: R65 class II (blue) class I (amber) EMC R10, CAP168/ICAO, CISPR 25 Level 3, IP69K

Warranty: 2 year warranty

S8000PA, MIC & CONTROLLER



Features: programmable switches, momentary or latching functions and 999 & walk test feature

Dimensions: L 76mm x H 54mm x D 22mm

Switches: 8 switches (9 including 'mic' for PA)

Voltage: 12 and 24VDC

Amps: 5-25amps

Approvals: EMC R10

Warranty: 2 year warranty

Test Facilities: At Redtronic not only do we design, develop and manufacture our own products, we test them as well thanks to our in-house test facilities. Our test equipment allows us to replicate real life environment situations and validate our products and ensure they meet industry standards.



Vibration Bench



Water Chamber



Humidity Chamber



LIGHTBARS

BEACONS

MINIBARS

DIRECTIONALS

WORKLAMPS

SIRENS

SPEAKERS

SWITCHES

AUXILIARY



MANUFACTURED IN THE
UNITED KINGDOM

6

SIRENS AND SPEAKERS

S201S



R10
EMC

UTAC

IP69K

Dimensions: L 200mm x W 140mm x H 46mm
Voltage: 11-16VDC and 20-30VDC
Amps: 2.4amps
Impedance: 2 Ohm
Nominal power: 20w Neodymium / Speaker,
20w Digital Siren
Frequency range: 360-1500Hz
Tones: 26 tones available
Approvals: EMC R10, UTAC, IP69K
Warranty: 2 year warranty

S150LP SLIM SPEAKER



R10
EMC

IP66

Features: can be used with 100w siren driver
Dimensions: L 180 mm x W 186.5mm x H 40mm
Impedance: 11 Ohm
Nominal power: 150w
Frequency range: 360-1500Hz
Approvals: EMC R10, IP66
Warranty: 2 year warranty

S150SL SLIMLINE



R10
EMC

IP66

Features: can be used with 100w siren driver
Dimensions: L 168 mm x W 132mm x H 54mm
Impedance: 11 Ohm
Nominal power: 150w
Frequency range: 360-1750Hz
Approvals: EMC R10, IP66
Warranty: 2 year warranty

S201S PC



R10
EMC

UTAC

IP69K

Dimensions: 102.2mm x 83.7mm (speaker)
x 1M (pipe) x 180mm (pipe cowl)
Voltage: 11-16VDC and 20-30VDC
Amps: 2.4amps
Impedance: 2 Ohm
Nominal power: 20w Neodymium / Speaker,
20w Digital Siren
Frequency range: 360-1500Hz
Tones: 26 tones available
Approvals: EMC R10, UTAC, IP69K
Warranty: 2 year warranty

EM60 PC SPEAKER



R10
EMC

IP66

Dimensions: 117.9mm x 100.75mm (speaker) X
1M (pipe) X 180mm (pipe cowl)
Impedance: 11 Ohm
Nominal power: 100w
Frequency range: 180-7000Hz
Approvals: EMC R10, IP66
Warranty: 2 year warranty

EM500 SIREN



R10
EMC

Dimensions: L 120 mm x W 95.5mm x D 51.5mm
Voltage: 12 or 24VDC
Amps: 9amps (100w), 6amps (60w),
20mA (standby)
Nominal power: 60w or 100w selectable
Frequency range: 360-1750Hz
Approvals: EMC R10
Warranty: 2 year warranty

PARAMEDIC

COMBINATION PRODUCTS

TORNADO X



R65 CLASS II R65 CLASS II R10 EMC ICAO CAP168 DEKRA IP66

LED colour options: single, tri and multi



Dimensions: H 154 mm x W 180mm x L 172mm

Flash patterns: 10 flash patterns

Voltage: 11-32VDC

Amps: 4.1 Amp @12VDC

Nominal power: 20w neodymium /

20w digital siren

dB Output: 115dB (single unit)

Approvals: R65 class II (blue and amber)

EMC / R10, CAP168/ICAO Dekra speed rating

146mph, IP66 (beacon) IP67 (speaker/siren)

Warranty: 2 year warranty

SPARTAN X



R65 CLASS II R10 EMC ICAO CAP168 DEKRA IP54

LED colour options: single, tri and multi



Dimensions: L 550 mm x W 305mm x H 64mm

Flash patterns: 7 flash patterns

Voltage: 12VDC

Amps: 8.5amps

Nominal power: 100w / 100w digital siren

dB Output: 100dB at 1M

Approvals: R65 class II (blue), EMC R10, CAP168/

ICAO, Dekra speed rating 146mph, IP54, IP69K (internals)

Warranty: 2-5 year warranty

DSFX-X



R65 CLASS II R65 CLASS II R10 EMC ICAO CAP168 DEKRA IP54

LED colour options: single, tri and multi



Dimensions: L 550 mm x W 305mm x H 90mm

Flash patterns: 7 flash patterns

Voltage: 12VDC

Amps: 9.5amps

Nominal power: 100w / 100w digital siren

dB Output: 100dB at 1M

Approvals: R65 class II (blue and amber)

EMC R10, CAP168/ICAO, Dekra speed rating 146mph, IP54, IP69K (internals)

Warranty: 2-5 year warranty



TORNADO X



SPARTAN X

Are you following Redtronic Social Media?

To find out the latest news as soon as it drops, receive exclusive offers, win competitions and much, much more follow Redtronic's social channels. We are on LinkedIn, Facebook, Twitter, Instagram and YouTube.



To view Redtronic product videos visit [YouTube.com - Redtronic Limited](https://www.youtube.com - Redtronic Limited)

REDTRONIC

VEHICLE WARNING AND SAFETY SOLUTIONS

LEADER IN VISUAL AND AUDIBLE WARNING SOLUTIONS FOR EMERGENCY AND SAFETY SERVICES

www.redtronic.co.uk



FOR A COMPLETE LISTING OF ALL PRODUCTS
PLEASE VISIT THE REDTRONIC WEBSITE
AT WWW.REDTRONIC.CO.UK

+44 (0)1422 310999

[INFO@REDTRONIC.CO.UK](mailto:info@redtronic.co.uk)

WWW.REDTRONIC.CO.UK



MANUFACTURED IN THE
UNITED KINGDOM

Distributed by: