



## Altia CLIO

Manage live incidents, civil emergencies and covert operations quickly and efficiently



Altia have recently acquired Badger Software, and we are delighted to be adding CLIO to our range of solutions. Developed with practitioners from the police and emergency services, CLIO has a proven track record of 10+ years in the most demanding environments. Recognised nationally by police as their tool for managing critical incidents and crimes in action, CLIO is a strong addition to Altia's solutions.

### Why CLIO?

CLIO (Central Logging of Intelligence Operations) is the UK's leading Critical Incident Management System and is trusted by governments, emergency services and businesses worldwide. In any fast-evolving situation it is crucial that everyone is on the same page. CLIO provides you with a virtual incident room so even if staff are not located together, you can efficiently share real-time information. Effective management can save lives, support resources, and protect your reputation when dealing with critical incidents.

*"We have been using CLIO for a number of years to support planned events, football and crimes in action. It has been a vital tool in helping us to manage these events and ensuring we have a clear audit trail around our decision-making."*

- Chief Supt, Sussex Police



#### Plan, test, automate and optimise

Giving everyone the information they need in real-time allows for fully informed decision making. CLIO allows you to know exactly what everyone should be doing as the incident unfolds. The opportunity for human error is reduced with an optimised response process, while structure is provided to help manage high-pressure situations. CLIO allows you to create 'templates' to be used when you need to put your plan into action.



#### Monitor and record activity in real-time

Ensure up-to-the-minute information is provided as situations develop, assisting with better and faster decision-making. A comprehensive and incorruptible audit trail is created showing a duty of care and enabling full accountability and evidential proof for use in any legal action. Review the audit trail after incidents to identify and resolve any points of concern.



#### Simple to deploy, learn, and use

CLIO is designed to offer structure in the most chaotic and fast-evolving situations, the 'bare essentials' approach results from years of working out precisely what is needed in these critical situations. Ultimately CLIO is a collaborative tool, built to ensure everyone is kept in the loop in any fast-developing situation and all decisions are made with complete visibility of up-to-date information.

**CLIO is currently used by over 75% of UK police forces**





## Uses

- Kidnap/Siege/Firearms Incidents
- Counter terrorism operations
- Emergency response centres
- General Criminality
- Co-ordinating suspects interviews
- Public Disorder
- Disaster Victim co-ordination
- Olympic planning
- Event planning and management
- Gold Command
- Missing persons
- Internal investigations

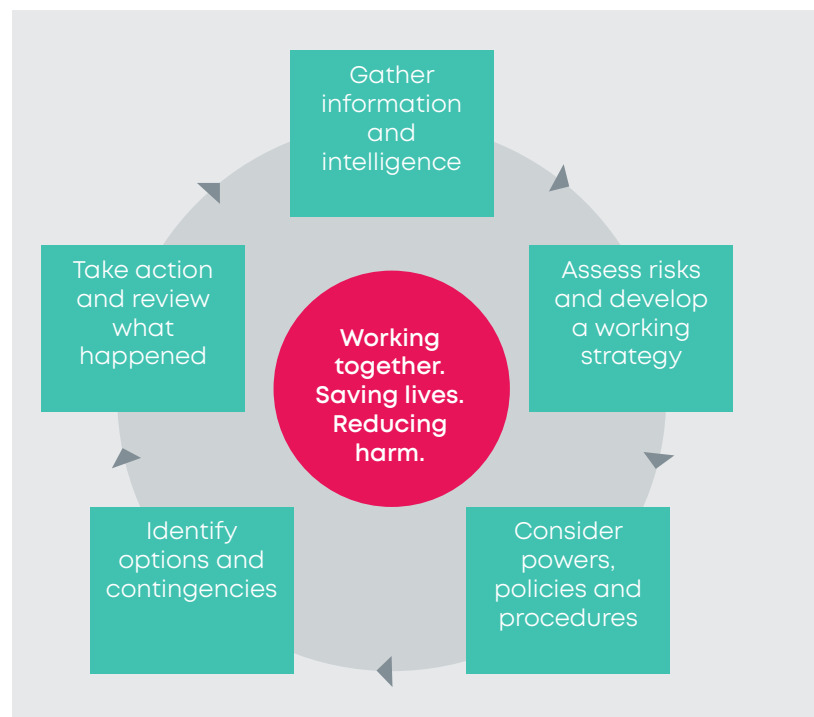
## Key features

- Situational awareness
- Strategic decision/policy log
- Accurate sharing of information
- Surveillance monitoring
- Resource library/document repository
- Action management
- Fast start-up operations
- Full audit trail
- Ease of use, minimal training
- Ease of use, focus on the incident
- Minimal admin overhead
- Available anywhere, even in the field
- Smart phone integration
- RSS News feeds
- Templated operations
- Evidential proof

## CLIO has helped ...

- The Commonwealth Games co-ordination in Scotland
- Tour de France – Yorkshire and UK
- G8 Leaders' Summit – Belfast
- National Olympic Co-ordinating Centre – London
- EU Presidency – Cyprus
- Summit of the Americas Head of Commonwealth – Trinidad and Tobago

## Built by IT people, designed by users.



## Learn more

[www.altiaintel.com](http://www.altiaintel.com)  
[sales@altiaintel.com](mailto:sales@altiaintel.com)  
+44 (0) 330 808 8600

Silver  
Microsoft  
Partner

[badgersoftware](http://badgersoftware.com)  
An Altia company