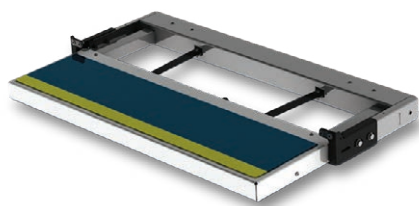
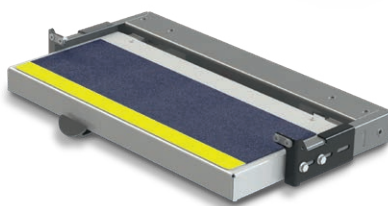


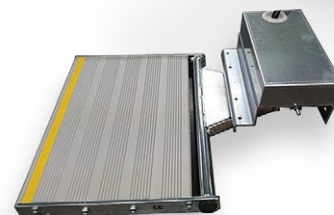
Steps Range



Electric Step



Manual Step



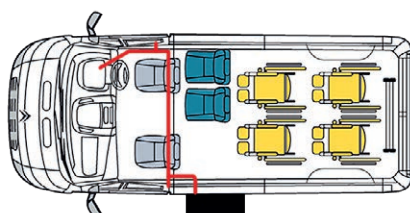
Electric Swivel Step

An excellent range of electric, manual and swivel steps.

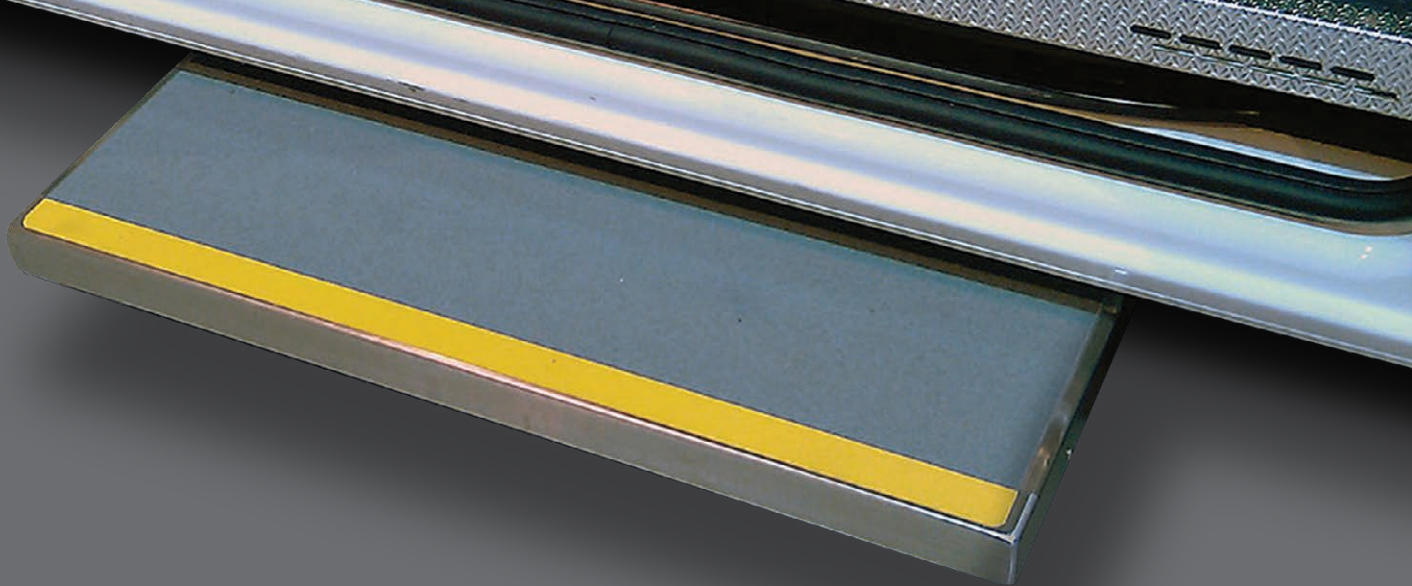
Offering simple, fast and secure operation; all versions have non-slip surfaces and are resistant to corrosion.

Features include

- Specially designed conversion kits (available for most vehicles)
- Wiring kit with LED dashboard indicator



Innovations In Accessibility

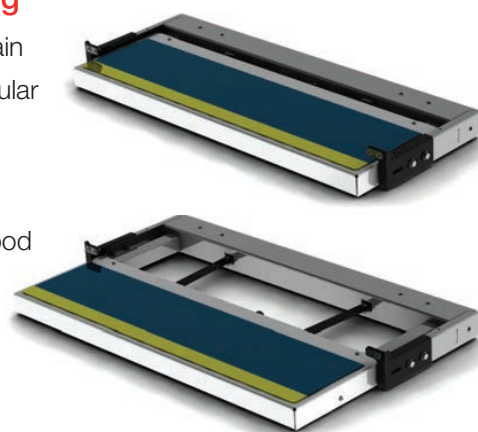


Electric Step

- 600, 900 or 1100mm wide
- Max. load: 250kg
- 100% stainless steel with galvanised steel frame
- Telescopic operation
- Unparalleled compactness
- Dedicated fitting kits for most vehicles

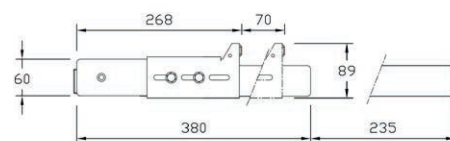
Non-slip TBS polyurethane coating

- The safest non-slip coating, even in the rain
- The TBS coating was developed in particular for boat decks
- Comfortable to use thanks to its flexible 2.1mm structure
- More than 10 years of service life, very good resistance to UV light and temperature
- Fuse protective wiring kit
- Door switch
- LED dashboard indicator



Dimensions

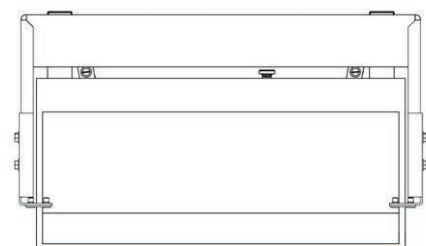
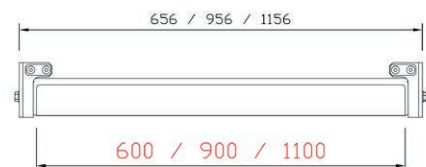
	Step dimensions	Overall dimensions	Weight
VRES600	600 x 280 x 60 mm	650 x 380 x 60 mm	20 kg
VRES900	900 x 280 x 60 mm	950 x 380 x 60 mm	25 kg
VRES1100	1100 x 280 x 60 mm	1150 x 380 x 60 mm	29 kg



Technical Specifications

Extending/retracting speed	0.19 m/s
Stress test (version E)	150 N
Endurance test	300,000 cycles
Load capacity	250 kg
Test load	375 kg
Motor	Bosch, fully waterproof IP54
Conformity	Directive 2006/42/EC - Machinery Directive Directive 2001/85/EC - Vehicle accessibility Directive 2006/28/EC - Electromagnetic compatibility

Installation and connection time 2 to 3 hours depending on the vehicle



Innovations In Accessibility

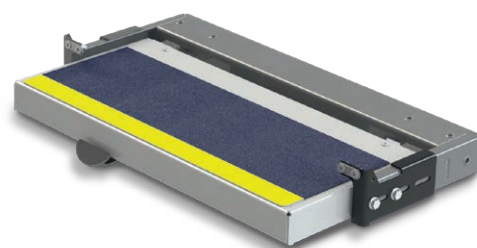


Manual Step

- 600, 900 or 1100mm wide
- Max. load: 200kg
- Anodised aluminium with galvanised tray
- Telescopic operation
- Dedicated fitting kits for most vehicles

Simple, fast and secure operation

- **To open:** push the step with your foot to release the spring and open it (the step is locked in position to avoid any risk of movement during use).
- **To close:** release the lever under the step with your foot to close the step.

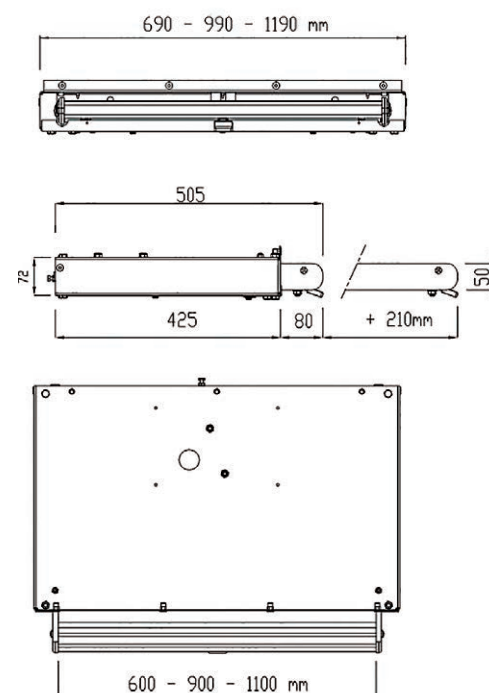


Dimensions

	Step dimensions	Overall dimensions	Weight
VRMS600	600 x 280 mm	690 x 485 x 72 mm	22 kg
VRMS900	900 x 280 mm	990 x 485 x 72 mm	26 kg
VRMS1100	1100 x 280 mm	1190 x 485 x 72 mm	30 kg

Technical Specifications

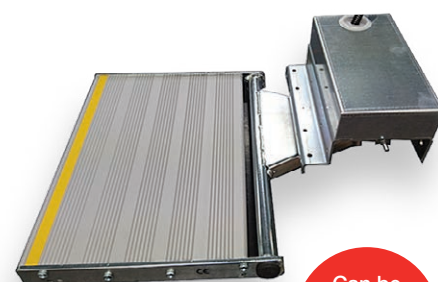
Endurance test	200,000 cycles
Load capacity	200 kg
Test load	300 kg
Mechanism	Spring
Motor	Bosch, fully waterproof IP54
Conformity	Directive 2006/42/EC - Machinery Directive Directive 2001/85/EC - Vehicle accessibility
Installation and connection time	1 to 3 hours depending on the vehicle



Innovations In Accessibility

Electric Swivel Step

- 400mm wide
- Max. load: 150kg
- Rotates to left and right
- Fits central or off set
- 100% aluminium and galvanised steel
- Depending on the vehicle and position of the step, there are 6 variations
- Dedicated fitting kits for most vehicles
- Fuse protective wiring kit
- Door switch
- LED dashboard indicator



Can be fitted in the centre or off centre

Dimensions

	Step dimensions	Overall dimensions	Weight
VRESS400	400 x 280 x 40 mm	400 x 525 x 161 mm	12 kg

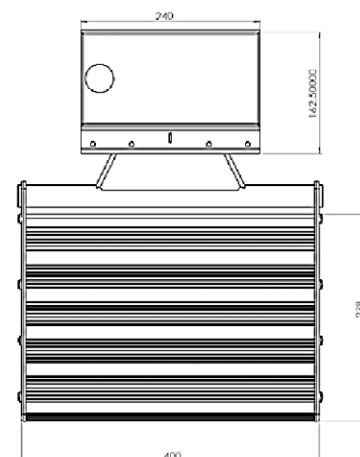
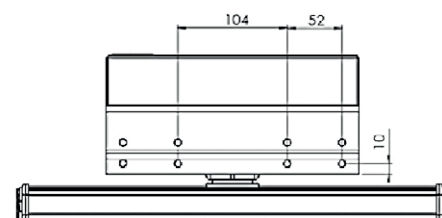
Options

	UK Drivers Side (clockwise rotation)	UK Passenger Side (anti-clockwise rotation)
Fixed Centrally	CD	CP
Fixed Right Hand	RHD	RHP
Fixed Left Hand	LHD	LHP

Technical Specifications

Extending/retracting speed	0.19 m/s
Stress test (version E)	150 N
Endurance test	200,000 cycles
Load capacity	150 kg
Test load	200 kg
Motor	Bosch, fully waterproof IP54
Conformity	Directive 2006/42/EC - Machinery Directive Directive 2001/85/EC - Vehicle accessibility Directive 2006/28/EC - Electromagnetic compatibility

Installation and connection time 2 to 3 hours depending on the vehicle



Centre Step



Innovations In Accessibility



Copyright 2020 Ricon Corporation. Ricon, Clearway and Sto-Loc are trademarks and S-Series is a registered trademark of Ricon Corporation. All Rights Reserved. This publication contains information accurate at the time of printing. Although descriptions are believed to be correct, complete accuracy cannot be guaranteed. Ricon UK reserves the right to make changes from time to time, without notice or obligation, in prices, specifications, colours and materials, and to change or discontinue models. See your dealer or Ricon UK representative for complete details.

www.vaporicon.co.uk

Faiveley Vapor Ricon Europe Limited,
Falcon Works, Meadow Lane, Loughborough,
LE11 1HS, UK

Tel: + 44 (0) 1509 635 920
Fax: + 44 (0) 1509 261 939
E-mail: sales@vaporicon.co.uk