

A comprehensive British Solution for Automated Drone Operations.



Automated integrated systems for
aerial and ground surveillance



Presented By:
Idroneinnovations

Contents

[Overview](#)[Product solutions](#)[Drones](#)[Software packages](#)[Costings](#)

IDI (IdroneInnovations) was founded in 2019 to revolutionise drone operations through automation. Headquartered in Reading UK, we design, manufacture, and support advanced drone hardware and software for critical industries.

Overview

IDI is proud to lead a uniquely British ecosystem, collaborating with:

Leading Edge Power:

Specialists in off-grid, resilient energy solutions, powering drone operations even in the harshest UK conditions.

SlinkTech:

Cutting-edge risk mitigation and situational awareness technology, ensuring safe and compliant drone missions.

Evolve Dynamics:

British-made drone platforms and payloads, seamlessly integrated for mission flexibility. Together, we provide a truly British technology stack, designed, built, and supported in the UK.



Aerial Surveillance Systems

- Automated Docking Station (ADS)
- Portable Drones System (PDS)
- Vehicle Drone System (VDS)

Ground Surveillance & Control

- CCTV
- Spot Ground Robot
- Off-grid Illumination

Our Hardware Solutions



ADS-1000

Automated Docking Station

Aerial

- Complete British ruggedised drone-in-a-box system
- Automated deployment, charging, and secure housing
- Evolve WOLFE drone, with tethered option
- supports additional drone options
- Ideal for large-scale, high-frequency security sweeps
- 2km Range (10km with extension kit)
- 1 hour flight time from charge
- Environmentally resilient (IP55)

[Datasheet](#)



ADS-600

Automated Docking Station

Aerial

- Complete British ruggedised drone-in-a-box system
- Automated deployment, charging, and secure housing
- Evolve WOLFE drone, with tethered option
- supports additional drone options
- Ideal for large-scale, high-frequency security sweeps
- Environmentally resilient (IP55)
- Supports Small Quadcopters

[Datasheet](#)



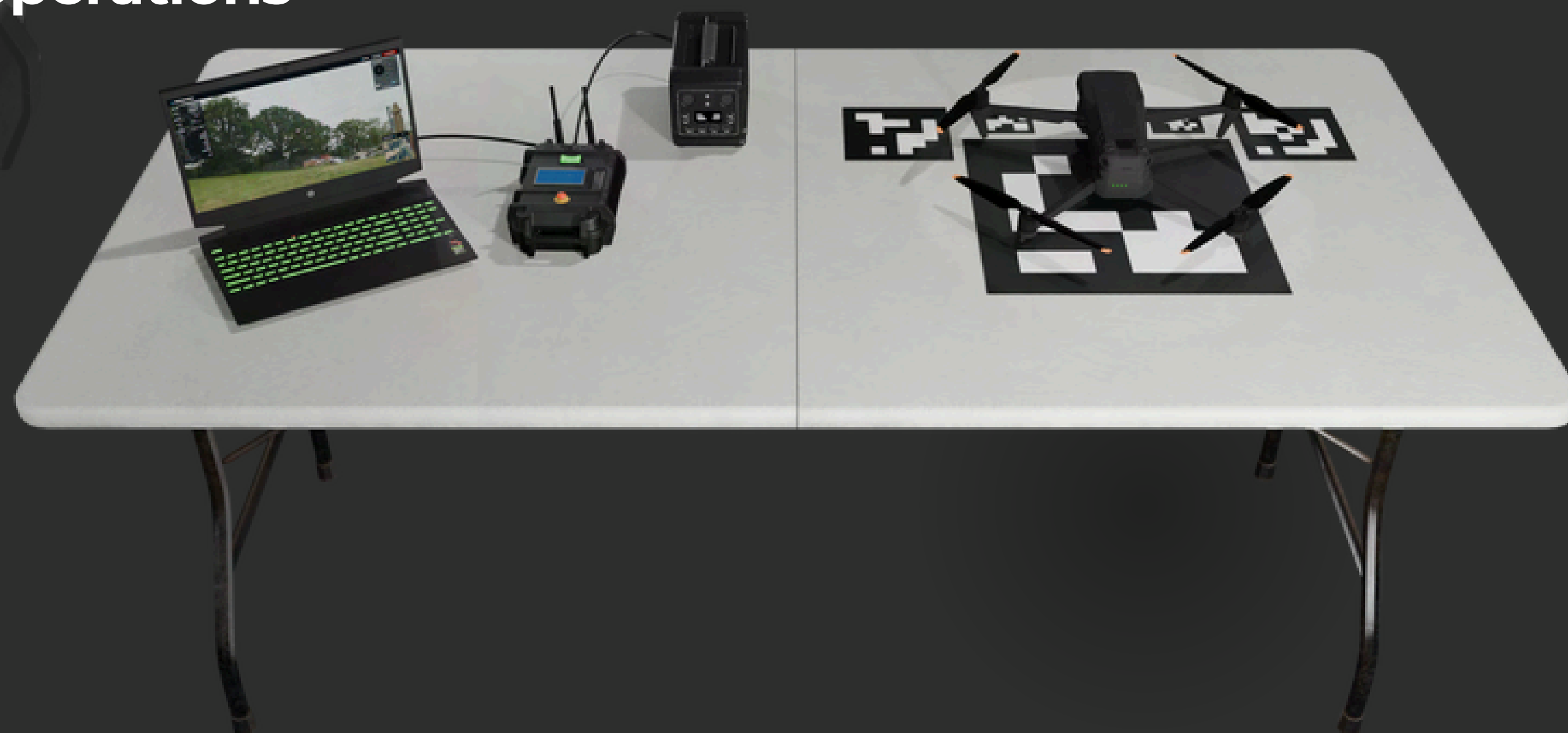
Portable Drone System (PDS)

Automated Drone operations

Aerial

- Rapid deployment
- Pelicase housing
- Plan Missions Remotely

[More information](#)



Vehicle Drone System (VDS) - future development

Automated Rapid deployment Aerial

- Vehicle-mounted deployment system
- Enables mobile patrol and rapid response
- Tethered option
- WOLFE or FOXE drones integration

[Datasheet](#)

[Tether information](#)



Our Drone Partners

Evolve Dynamics Drones



Evolve Dynamics

 Hampshire, UK

Foxe - Sub-250g, designed for rapid deployment in demanding conditions

Wolfe -Sub-4 kg, built for extended missions in harsh environments

Sky Mantis 2 - Sub-8kg, ultra-rugged with multi-mission payloads and infinity tether, suitable for coastline missions, swappable payloads



FOX E



Pioneering new frontiers

STRENGTH

Extreme endurance, stable in the harshest winds, weatherproof, built to survive

STEALTH

Observe from a safe distance, keep a low profile, launch from any location

INTELLIGENCE

Autonomous operations, smart detection, GNSS-denied navigation, threat avoidance



Evolve FOX E

Integrating with all IDI Automation solutions

WOLFE

Designed to Endure



RESLIENCE

Steady in strong winds, jamming resistant comms, all-weather capable, field serviceable design

AGILITY

Fly without restrictions, ready in seconds, control made simple

EXPLORATION

Navigate the unknown, find and follow, stay on course, plan, execute and repeat



Evolve WOLFE

Integratable with all IDI Automation solutions

SKY MANTIS 2

Mission Evolved



RUGGEDNESS

Engineered for the extreme, storm ready, proven durability, field repairable design

ENDURANCE

Extended flight time, built for the load, tether compatible

VERSATILITY

Mission ready in seconds, platform agnostic launch, sub 8kg weight, payload flexibility



Evolve Sky Mantis 2

Integrating with all IDI Automation solutions

Complete ADS1000 Solution Package

A fully automated drone solution combining self-sustaining, off-grid power, a versatile drone platform, and a photovoltaic fencing system that supports both security and wind management. Intelligent portals are integrated into the tops of fencing posts, enabling full aerial co-ordination. Proudly designed and manufactured in Britain

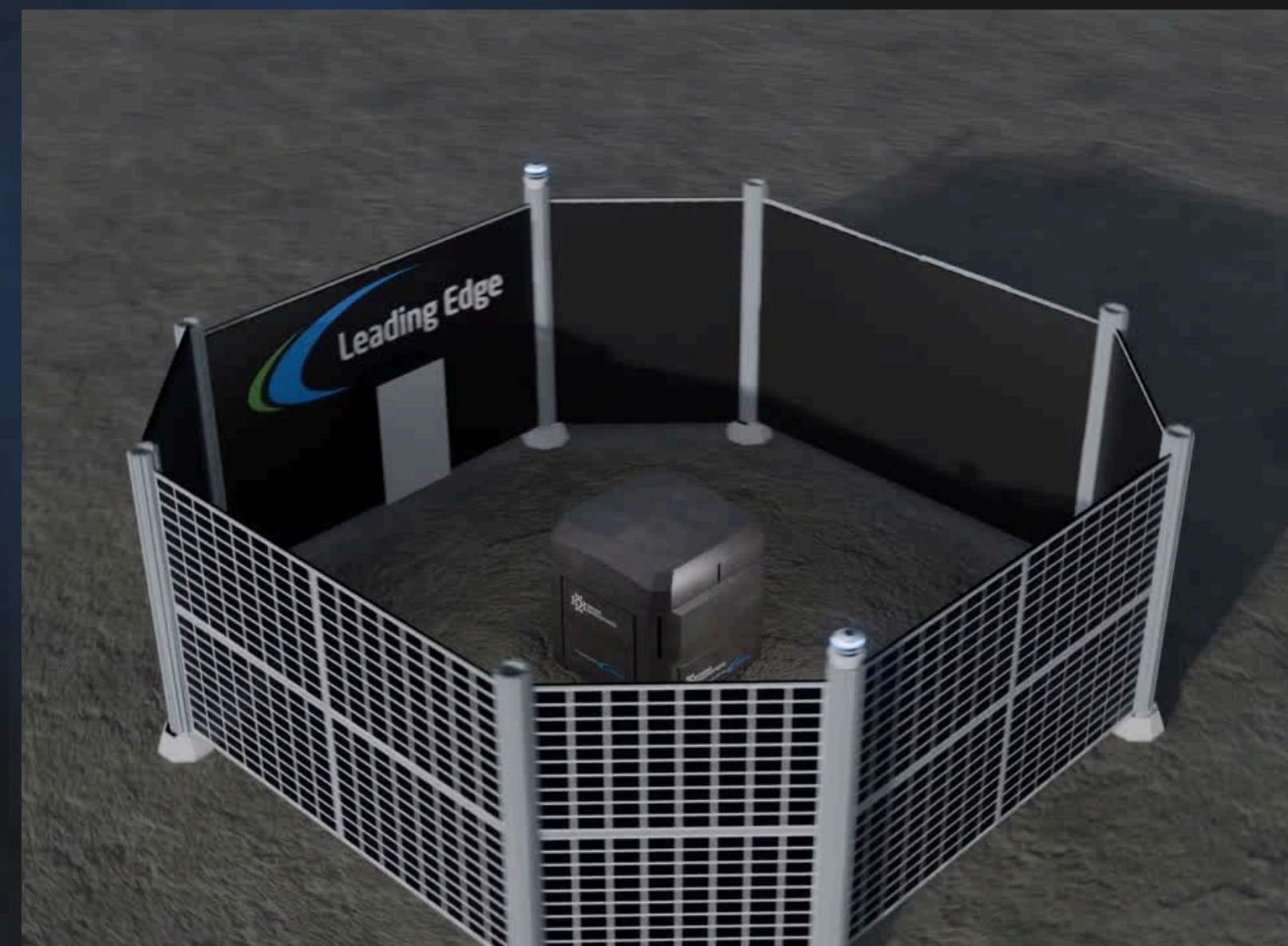
ADS Fenced Dock and Power Bundle

- ADS1000 Outer dock / LEP
- Off-grid Power package 48V / LEP
- Solar fence kit / LEP (24 panel @450w - 10.9kWp)
- Inner Dock / IDI
- Software & Licensing / IDI
- Inflight Coordination Portals / SLinkTech

The system hosts 10kWh battery capacity to facilitate flying operations and is powered by solar to re-charge.

Drone Options - Evolve Dynamics

- WOLFE, or FOXE can be added too
- Air traffic management system



Our Software Solutions

Software and Licensing IDI Fly v3

[IDI Fly_3](#)

IDI Fly Features

Upload Assets - Upload & visualise assets with cesium-powered mapping

Flows & Nodes - Effortless automation & third-party Integrations

Live Stream - Real-time video streaming

3D Maps - Photorealistic 3D mapping for unmatched clarity

Enterprise Package Licensing

Additional add-ons
Command & control room interface package

Service Levels



Level 1

Basic maintenance and support



Level 2

Includes analytics & systems updates



Level 3

Full managed service, remote ops, AI analytics

IDI Fly v3

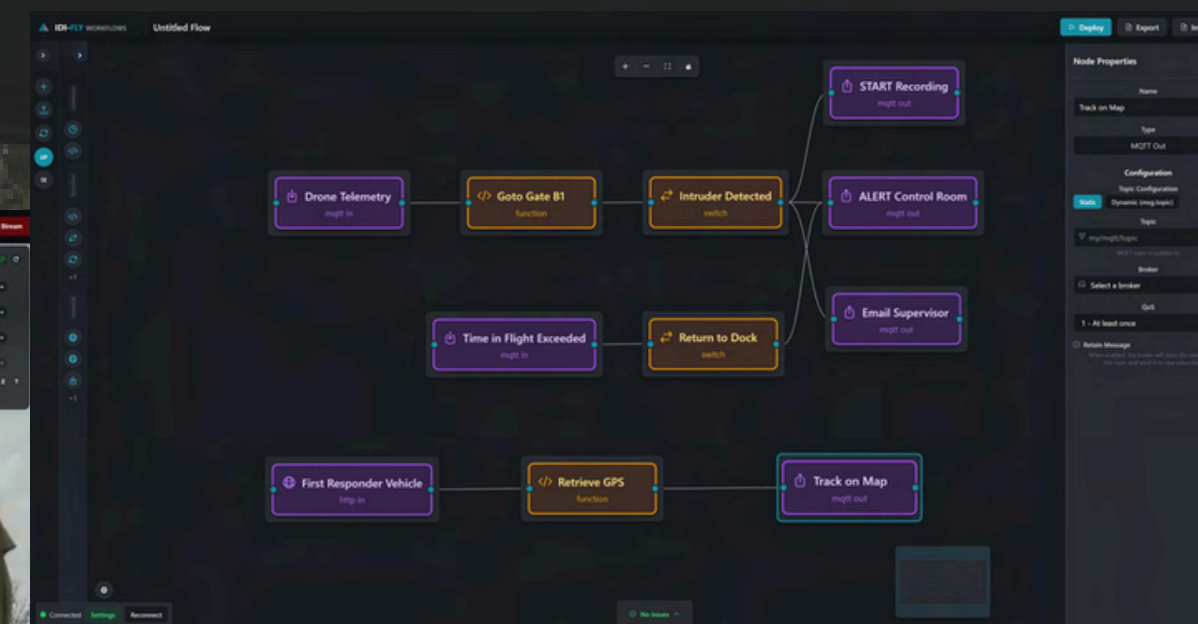
IDI Fly_3

Upload Assets - Upload & visualise assets with cesium-powered mapping

Flows & Nodes - Effortless automation & third-party Integrations

Live Stream - Real-time video streaming

3D Maps - Photorealistic 3D mapping for unmatched clarity



Asset Security

Recommended Aerial Surveillance Solutions

- Portable Deployment System
- ADS-1000 package
- WOLFE Drone
- FOXE drone recommended for internal security

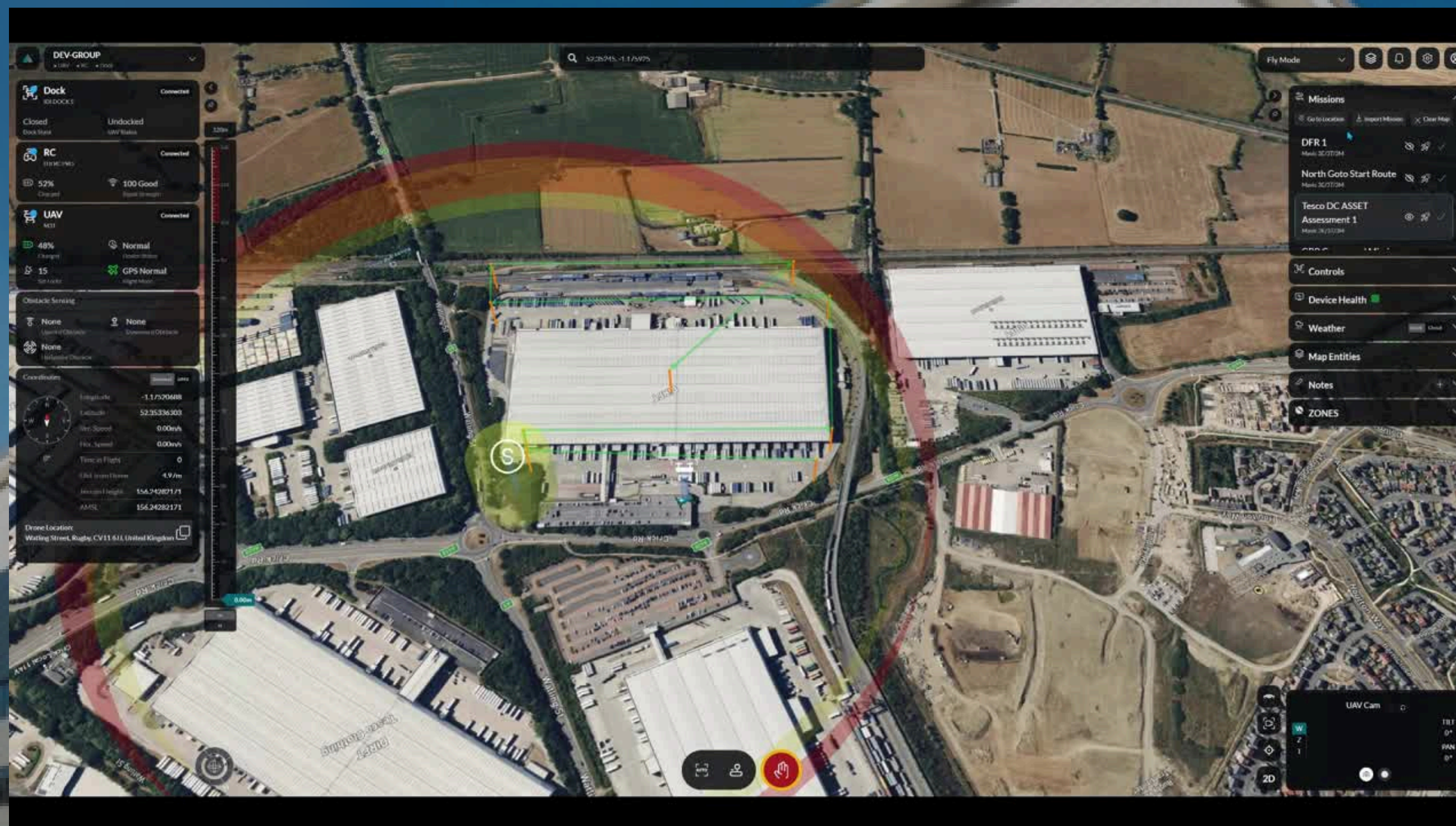
This solution achieves:

- Protection of high value assets and equipment
- Immediate reaction aerial coverage to any transport incident to check on risk and response requirements

Drone Value Add:

- **Unbreachable Perimeter Security:** Program autonomous patrols of entire fence lines 24/7. Using thermal imaging at night, the drone can detect a potential breach long before it happens, dispatching an immediate alert to your security team.
- **AI Object Detection:** Intelligent identification of objects such as vehicles and people.
- **Loss Prevention & Asset Protection:** Conduct automated sweeps of trailer parks, container yards, and high-value storage areas, flagging suspicious activity, loitering vehicles, or individuals in unauthorised zones.
- **Real-Time Threat Verification:** When an alarm is triggered, the ADS1000 provides instant aerial context. Via live stream, the control room can immediately verify a false alarm or a genuine intrusion, ensuring measured and appropriate responses while keeping personnel safe.
- **Health & Safety Oversight:** Beyond security, this solution promotes safe behaviours. A drone can monitor HGV traffic flow, ensure compliance with on-site safety protocols (e.g., hi-vis jacket usage), and provide aerial oversight during emergency situations e.g. fires, chemical spills.
- **Operational Intelligence:** Gather data-driven insights on site usage, traffic choke-points, and security patrol effectiveness, allowing you to optimise operations and continuously improve your security posture.

Planning Secure Operations



IDI Fly 3 simulation of Flight Operations - Asset Monitor and Count

Distribution Site Solutions

Recommended Aerial Surveillance Solutions

- 2 x ADS-1000 packages
 - co-located or separated at sites
- WOLFE Drone

These solutions achieve:

- Intruder Detection (Night and Day)
- Incident Response and Overwatch
- Protection of high value assets and infrastructure including contractor compounds located along the link road

Drone Value Add

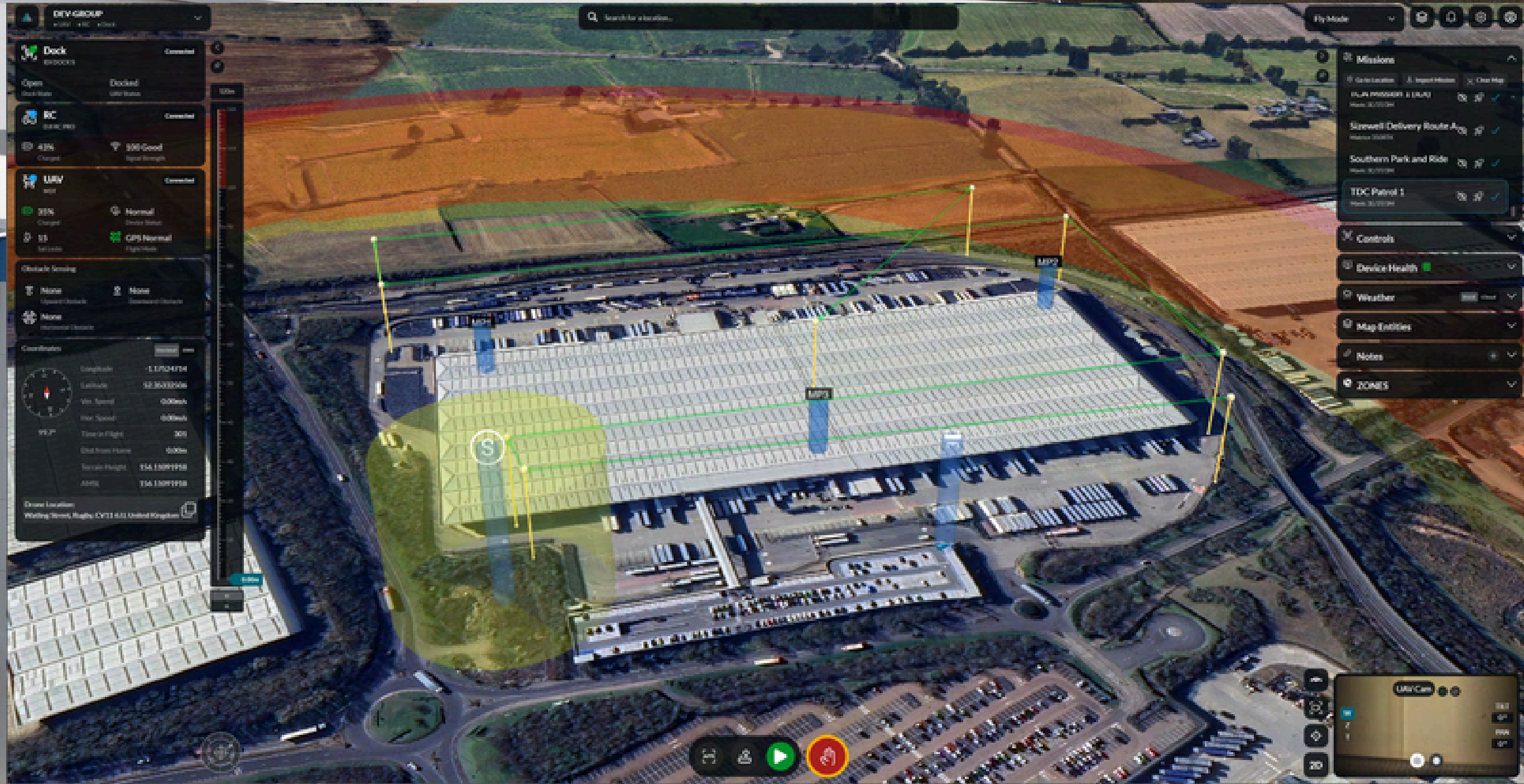
- **Proactive Trespasser Intervention:** Autonomous patrols can detect and deter trespassers early, issuing warnings and enabling rapid British Transport Police response.
- **Cable Theft Prevention:** Thermal imaging detects intruders at night, helping to prevent theft in high-risk areas.
- **Remote Inspections:** Quickly assess infrastructure like bridges and substations without deploying engineering teams, enabling early fault detection.
- **Environmental Monitoring and Vegetation Management:** Scheduled flights monitor vegetation growth, supporting efficient, targeted clearance.
- **Major Incident Response:** Delivers immediate aerial imagery during incidents to support emergency response and coordination.
- **Improved Situational Awareness:** promotes safe behaviours with regular surveying
- **Scheduled carriage monitoring:** Drone can follow train between points and notify of anything extraordinary.
- **Extended reach and coverage with less manpower and saves time:** can monitor situations remotely reducing ground personnel required.

Distribution Sites

- Monitor Fence line, Gate and Padlock Security on compounds.
- Monitor Assets
- Respond to Incidents
- Inspect Assets

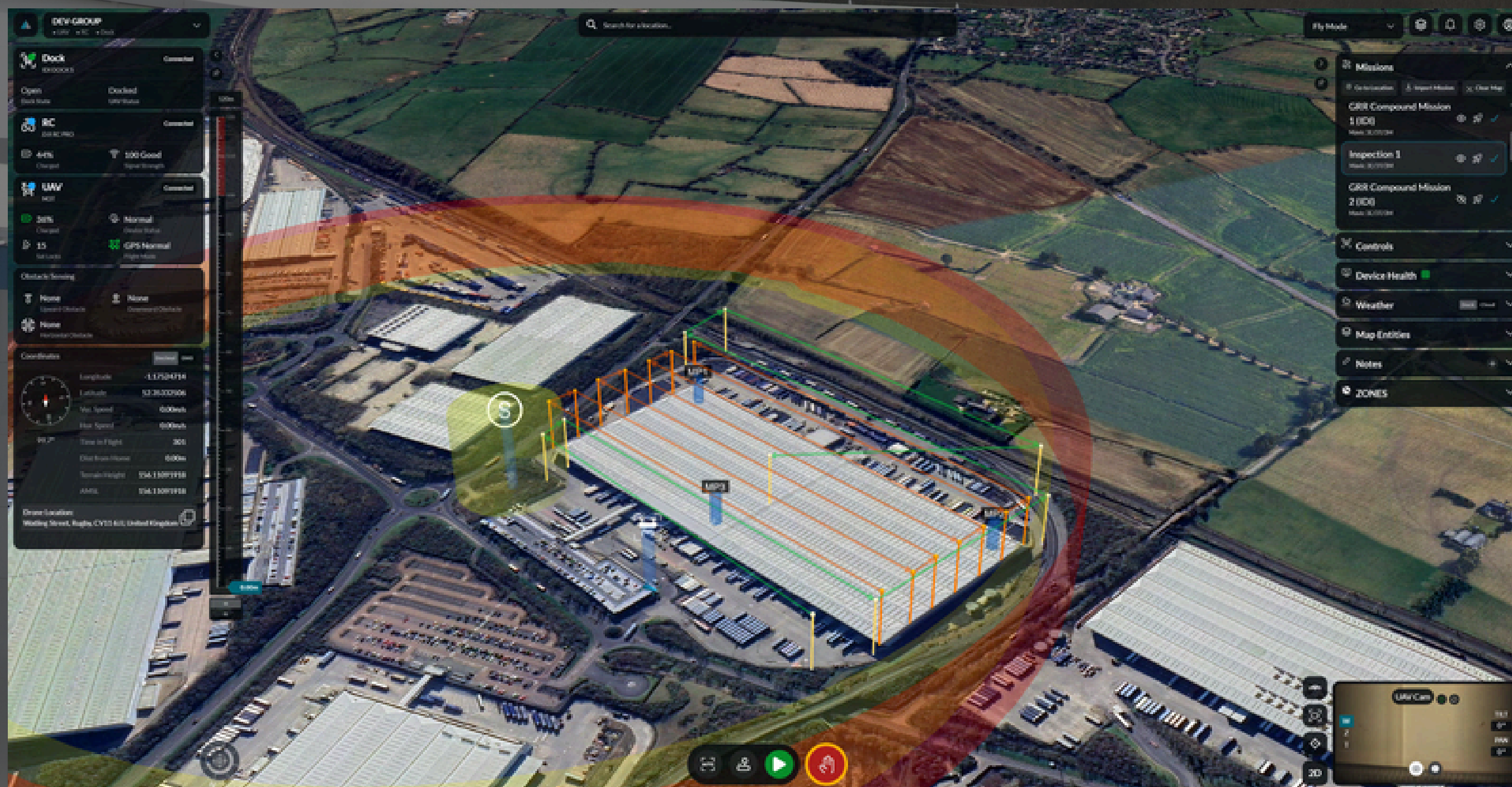


Distribution Site Drone Automation



Asset Inspection Count

Distribution Site Drone Automation



Inspection Route - Thermal and RGB

Perimeter Patrols 24/7

Thank you

