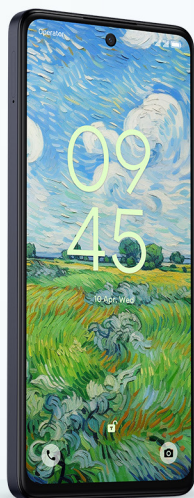


TCL

INSPIRE GREATNESS

2025 DEVICE BROCHURE



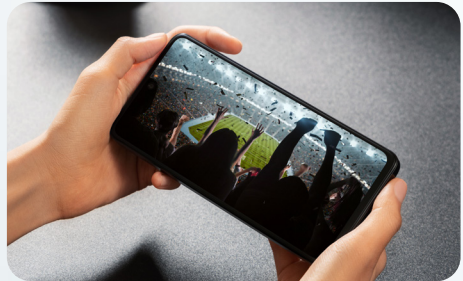
TCL 50 PRO
NXTPAPER 5G



TCL NXTPAPER 11 Plus



TCL 60 SE
NXTPAPER 5G



ABOUT TCL

TCL is one of the world's fastest-expanding consumer electronics companies, holding a leading position in television and smart device manufacturing.

TCTCL has earned the prestigious rank of being **the world's No. 2 TV brand** by market share, is the global No. 1 Google TV brand, and holds the title of global No. 1 brand for 98" TVs. TCL is also a global top 5 brand in mobile product shipment, demonstrating its strength and growth across multiple categories in the smart device market. This market dominance reflects the company's strong innovation and deep commitment to delivering high-quality, user-focused products.

TCL is the official Worldwide Olympic and Paralympic Partner in the Home Audiovisual Equipment and Home Appliances category and actively invests in sports and community partnerships to amplify its global presence. In the UK,

TCL proudly sponsors Motherwell Football Club and works with Paralympic swimming champion Brock Whiston, reflecting its values of excellence, resilience and inspiring greatness.

Our mission at TCL is to enhance lives and enrich everyday experiences through cutting-edge technology. With a diverse portfolio of smart devices and display technologies, TCL continues to Inspire Greatness across the globe.

TCL B2B Benefits:

The TCL 60 Series offers robust B2B features designed for enterprise reliability and long-term support. Powered by Android, these devices ensure future-ready performance with 2 OS upgrades. Businesses benefit from five years of security updates, a two-year warranty, and a range of durability ratings, including IP54 on most models and IP68 on the TCL NXPAPER 60 Ultra for added protection in demanding environments.



TCL NXTPAPER

TCL NXTPAPER Technology – Enhanced Visual Comfort for Extended Business Use

TCL NXTPAPER is the world's first full-colour electronic paper-like display, engineered to reduce eye strain and improve screen comfort during long work sessions without compromising vibrant visuals.

By reducing harmful blue light and using advanced anti-glare nano-etching, NXTPAPER ensures clear readability even in bright environments—ideal for professionals working indoors or on the go.

Available in both smartphones and tablets, the TCL 60 SE NXTPAPER 5G features a 6.7" 120Hz certified low-blue light, anti-glare display with MAX INK Mode

for distraction-free reading. It features dual speakers for clear audio, a 50MP dual camera system, 256GB storage, and a 5200mAh battery with 18W fast charging, providing up to 2 days of use—perfect for mobile productivity.

The award-winning TCL NXTPAPER 11 Plus tablet offers an 11.5" 2.2K display with paper-like texture and vivid colours, paired with AI-powered productivity tools such as smart voice memo and writing assistant. Its robust 8000mAh battery supports extended workdays and up to *60 days of standby.

**Designed to support professional
efficiency and well-being in
demanding business environments**

Paper-like comfort

NXTPAPER Display





TCL 605

Equip your team with the TCL 605, featuring a 6.7" HD+ 90Hz NXTVISION display for smooth, clear visuals, ideal for mobile productivity. Capture sharp images for work with a 50MP dual camera and store essential files with 128GB of storage. Stay powered with a 5200mAh battery and Smart Battery Management, delivering up to *2 days of use, plus 18W fast charging to minimise downtime. Reliable, efficient, and built for business on the move.

*Based on internal testing; actual results may vary.



TCL 60_R 5G

Stay connected with 5G speed and a powerful chipset for smooth multitasking. The 6.7" 120Hz NXTVISION display is perfect for remote work and presentations. Capture clear images with the 50MP camera, store more with 128GB (expandable to 2TB), and work longer with a 5200mAh battery built for up to 2 days of use.

TCL 60_{SE}

Featuring a 6.7" HD+ 90Hz NXTVISION display and dual stereo speakers, the TCL 60 SE delivers sharp visuals and clear audio for meetings and content on the go. With 512GB storage, a 50MP dual camera, and a 5200mAh battery with 18W fast charging, it's a reliable tool for fieldwork, collaboration, and all-day productivity.



TCL 60_{SE} NXT PAPER 5G

With a 6.7" 120Hz Eyesafe-certified display and Max Ink Mode for focused reading, the TCL 60 SE NXT PAPER 5G supports comfortable, distraction-free work. AI-powered summaries and translations enhance productivity, while 5G, a 50MP camera, and a 5200mAh battery keep teams connected and efficient throughout the day.





TCL NXTPAPER 60 Ultra

This flagship handset features a 7.2" NXTPAPER 4.0 display with natural light and Anti-Glare 2.0 for reduced eye strain, plus Max Ink Mode for effortless reading.

Equipped with a 50MP telescopic camera, it delivers professional-grade imaging for detailed documentation and content creation. Designed for business, it supports seamless screen mirroring and reverse charging. Includes two years of free AI-powered productivity tools - smart voice memos, smart translator, and live subtitles - enhancing efficiency and communication.

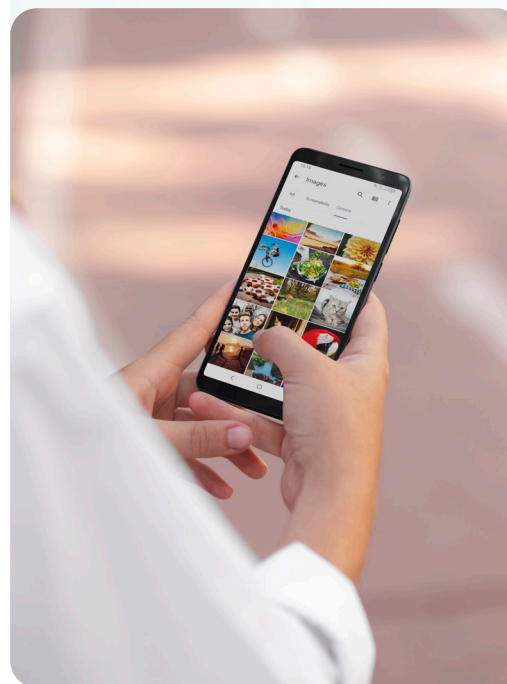
A premium device built for professional wellness and productivity.



TCL 501

The TCL 501 offers reliable functionality for essential business tasks. Its 6" display supports clear viewing for messaging, apps, and content, while the 5MP camera ideal for documentation needs. Powered by an efficient octa-core processor and 3000mAh battery (up to 10 hours of use), it handles daily workflows with ease. With Face Unlock and expanded memory, it's a secure, practical choice for large-scale or entry-level deployments.

Simple, secure, and built for business essentials.



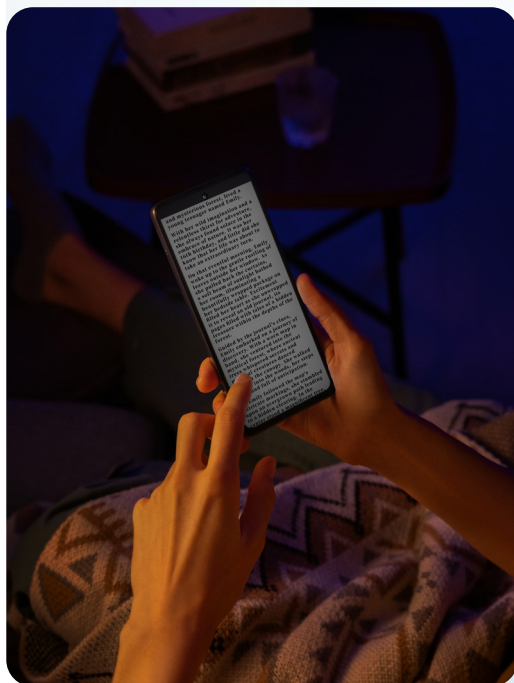


TCL 50 PRO NXTAPER 5G

Designed for professionals who spend long hours reading and reviewing documents, the TCL 50 Pro NXTAPER 5G features advanced NXTAPER technology with a dedicated key to activate Max Ink Mode. This mode minimised distractions by blocking non-essential apps and offers up to 26 days of standby and a full week of uninterrupted reading, ideal for focused work sessions.

Equipped with a 108MP Ultra Pixel camera for detailed imaging and Horizon Lock for stable video capture, it supports high-quality content creation and remote collaboration. The 32MP front camera ensures clear, professional video calls.

A device engineered for comfort, clarity, and productivity in business environments.



TCL TAB 8 LTE Gen2

The TCL TAB 8 Gen 2 offers smooth 90Hz visuals on an 8.7" display, balancing portability with a productive viewing experience for web browsing, presentations, and collaboration. Powered by a robust octa-core processor and a 6000mAh battery, it delivers reliable performance and all-day usage for demanding workflows. Running Android 14, it ensures enhanced security, privacy controls, and the latest customisation options, ideal for business environments. Its slim, premium design complements a professional setting without compromising portability.

TCL TAB 10L Gen4

The 10.1" IPS display delivers vibrant visuals and sharp clarity, ideal for presentations and multitasking. Powered by a robust octa-core processor, it ensures smooth performance across multiple business applications. With a 6000mAh battery and 18W fast charging, the TCL TAB 10L Gen 4 supports extended use and quick recharging, keeping your team productive throughout the day.



TCL TAB11_{FE}



Featuring an 11" NXTVISION display and Centre-Face camera tech for clear video calls, the TCL TAB 11 FE LTE supports professional communication. With a 6000mAh battery and efficient float charging, it offers long-lasting performance. Compatible with keyboard and T-Pen accessories, it adapts to various business needs.

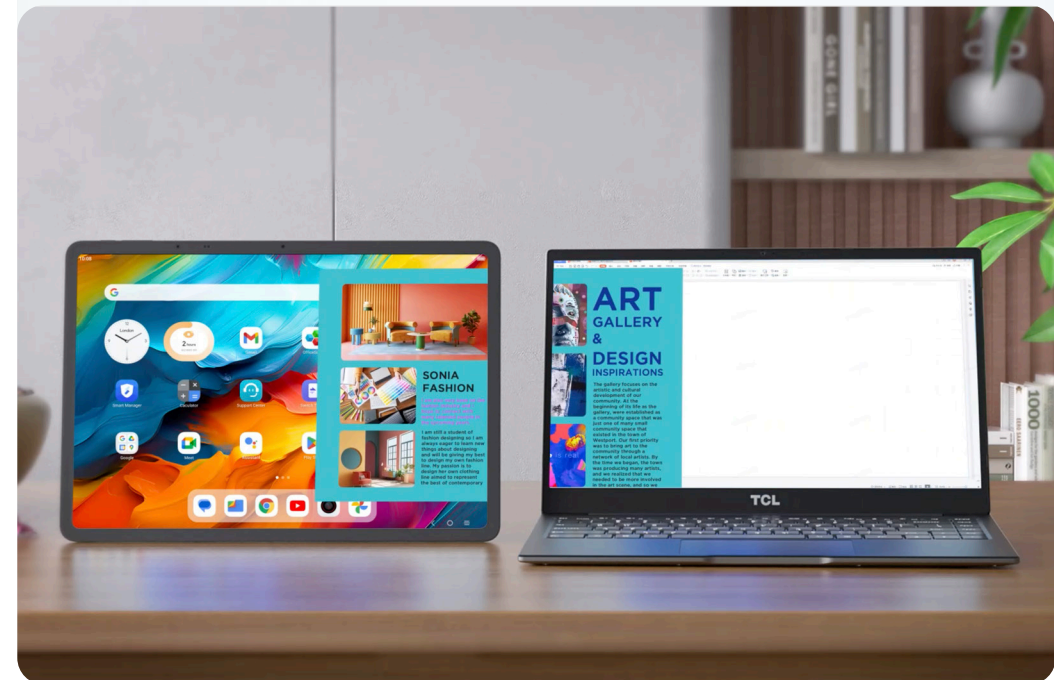
TCL NXTPAPER₁₄



The 14.3" 2.4K NXTPAPER 3.0 display delivers a natural, paper-like reading experience with reduced glare, supporting three versatile display modes for professional use. Powered by a MediaTek Helio G99 processor, 16GB RAM, and 256GB storage, it runs Android 14 for smooth multitasking. A 10,000mAh battery with 33W fast charging ensures long-lasting productivity. Dual front cameras and quad stereo deliver clear video calls and quality audio, ideal for professionals needing a large, comfortable, and efficient tablet. Fully compatible with Office 365, it supports seamless document editing, collaboration, and productivity on the go.

TCL NXTPAPER_{11Plus}

Designed for extended reading and work, the 11.5" 2.2K NXTPAPER display reduces eye strain with paper-like clarity and adjustable viewing modes via the NXTPAPER Key. Powered by MediaTek Helio G100, up to 16GB RAM, and 256GB storage, it supports multitasking on Android 15. The 8000mAh battery with 33W fast charging ensures all-day use. AI features and T-Pen support enhance productivity and note-taking.



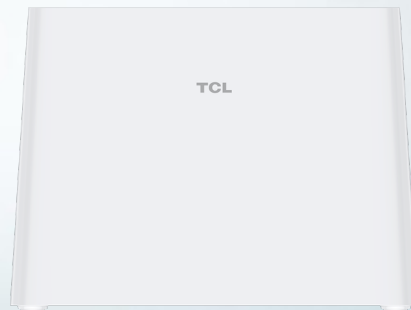
LINKZONE MW45



Designed for small offices, home offices, and SMBs, the TCL MW45V2 ensures secure, password-protected mobile broadband connectivity. Support multiple users with seamless, reliable Wi-Fi, ideal for remote work, travel, and business continuity during power outages or emergencies. Stay connected and productive wherever business takes you.

TCL LINKHUB^{5G} HH515L

Deliver blazing-fast 5G speeds up to 3.47 Gbps on Sub-6 GHz with low-latency dual-band Wi-Fi (2.4/5GHz & 2.4/6GHz), supporting seamless streaming, video conferencing, and multiplayer gaming. Supports up to 32 simultaneous users, ideal for business meetings, employee training, and remote collaboration with stable, secure connections. Manage your network easily via the TCL Connect App, offering advanced security, user monitoring, and guest access controls. Optimised for reliable, secure business connectivity.



TCL

INSPIRE GREATNESS

