

firewatch



# FIREWATCH: THE COMPLETE PICTURE FOR FIRE AND RESCUE

## WHY FIREWATCH?

### Smarter, Safer, Better-Connected Fire & Rescue Operations

FireWatch® is the UK's leading fire service management platform, designed in partnership with Fire and Rescue professionals. It unifies operational, personnel, and resource data into a single, intelligent system—giving you **real-time visibility, strategic control**, and **confidence in every decision**.

**20K** UK FRS Users

**ISO27001** certified

**25+** years of experience

**MS Azure** cloud resilience

#### ✓ Break Down Silos

Connect HR, payroll, training, availability, assets, and health & safety through integrated modules—eliminating duplication and enabling, cross-functional workflows.

#### ✓ Integrate End-to-End

Link FireWatch with Mobilisation Systems, Prevent + Protect, and learnPro LMS—aligning resourcing, emergency response, and prevention based on risk.

#### ✓ Real-Time Operational Insight

Access live data across your service—from establishment and crew availability to asset readiness—supporting faster response and smarter planning.

#### ✓ Cloud & Mobile Enabled

Accessible via browser, mobile app, Microsoft Teams, and Microsoft 365—ideal for both frontline and management use.

#### ✓ AI-Powered Decision Support

Use natural language commands to retrieve live data, generate visual outputs, and complete tasks via chat-based interactions.

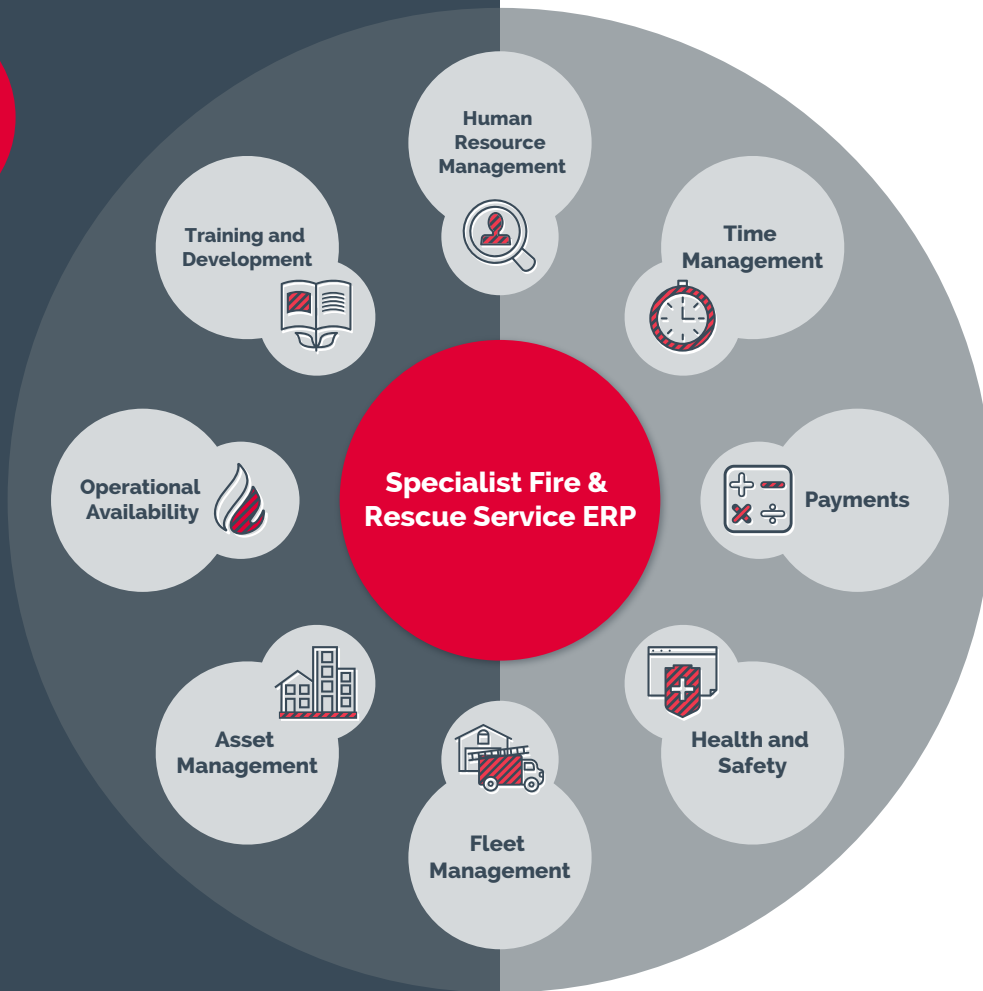


Let's get ready.

Contact our firewatch product experts today to request your demo or learn more.

firewatch  
LearnPro  
GROUP

email: [info@firewatch.co.uk](mailto:info@firewatch.co.uk)  
visit our website: [www.firewatch.co.uk](http://www.firewatch.co.uk)



# KEY CAPABILITIES

## ✓ Workforce Management

Manage HR, posts, and complex contracts in one integrated system—linked directly to staff availability and rostering. Supports dynamic crewing, shift planning, and self-service tools to reduce admin and ensure the right people are in the right place at the right time.

## ✓ Training & Competency

Track training, qualifications, and compliance with automated alerts and dashboards for visibility into gaps and expiries. Supports audit readiness and ensures operational competence—critical for maintaining availability.

## ✓ Asset & Fleet Management

Monitor vehicles, equipment, and PPE in real time. FireWatch links asset status to operational readiness, with built-in maintenance schedules, inspections, and lifecycle tracking to ensure resources are fit for use.

## ✓ Health, Safety & Risk

Log safety events, manage investigations, and track corrective actions. Includes occupational health records and supports proactive safety management with workflows and reporting aligned to regulatory standards.

## ✓ Mobilisation Interface

Live, bi-directional integration with control room systems matches vehicle availability to incidents. FireWatch receives incident data and stages updates to support faster, safer mobilisation decisions.

## ✓ Strategic Reporting & Dashboards

Customisable dashboards and reports provide instant access to KPIs, trends, and forecasts. AI and chat-based tools support inspections and performance reviews, enabling leadership to access insights autonomously.

## ✓ Technology Integration

Built on Microsoft Azure and powered by AI, FireWatch integrates with OpenAI, Microsoft Entra, To Do, Outlook, and SharePoint—connecting seamlessly with your existing tech

# TRUSTED NATIONWIDE

FireWatch is used by **around one-third of all UK Fire and Rescue Services**, supporting their mission to deliver efficient, responsive, and data-driven operations.



## What our Clients Say

*"Ensuring that we have advanced, flexible and accurate technology is key for our service. We have worked closely with Infographics [LearnPro Group] to ensure that FireWatch is exactly what we need to increase the visibility of available resources and people to keep residents safe."*

**Surrey Fire and Rescue Service.**