

# Start your journey with us today

Visit [www.ife.org.uk/membership](http://www.ife.org.uk/membership) to learn about our range of memberships and how to apply.

## Graded memberships available:

- Fellow (FIFireE)
- Member (MIFireE)
- Associate (AIFireE)
- Graduate (GIFireE)
- Technician (TIFireE)

## Other membership options:

- Student
- Affiliate Individual
- Affiliate Organisation

## Professional registration as a fire engineer:

We are licensed by the Engineering Council to register Chartered Engineers, Incorporate Engineers and Engineering Technicians. Find out more at [www.ife.org.uk/engineering-council](http://www.ife.org.uk/engineering-council).



IFE House

64-66 Cygnet Court

Timothy's Bridge Road

Stratford-upon-Avon

CV37 9NW

United Kingdom.

t: +44 (0) 1789 261463

e: [info@ife.org.uk](mailto:info@ife.org.uk)

Registered in Scotland No. SC013267

Scottish Charity No. SC012694

VAT registration number: 229 2444 09



# About the IFE

Enhance your career with us



[ife.org.uk](http://ife.org.uk) | Illuminating a fire safe future







## About the IFE

### A global body for fire professionals

The IFE is an international professional membership body for those in the fire sector that seek to increase their knowledge and understanding of fire, and gain professional recognition. With over 100 years of history, the IFE is instrumental in shaping a future world that is safer from fire.

We offer a well-established and dynamic suite of internationally recognised membership grades and fire-related qualifications. The IFE delivers more than 6,000 exams annually.

We also offer specialist registers and we are licensed by the Engineering Council meaning if you are suitably qualified and experienced, we can register you as a Chartered Engineer, Incorporated Engineer or an Engineering Technician.

Managed for fire professionals by fire professionals, we aim to advance and improve the knowledge, practice and recognition of all fire professionals.

## Get the professional recognition you deserve

Membership of the IFE connects you to the world of fire engineering. No matter where you are in your career, our suite of memberships suit everyone. Become a member to unlock access to a range of learning and knowledge resources and our global community of fire professionals.

### ◆ Exclusive CPD

Be the first to hear about CPD events, gain access to the member only online CPD Hub to support your professional development and log all CPD using our tracking tool.

### ◆ Enhance your status

Use IFE letters (post-nominals) after your name.

### ◆ Boost your career

Gain international recognition of competence and commitment and improve your employability and earning potential.

### ◆ Grow your network

Join your local branch and meet like-minded fire professionals at our conferences and events.

### ◆ Develop your knowledge

Receive a free subscription to the International Fire Professional journal, e-newsletter and e-communications.

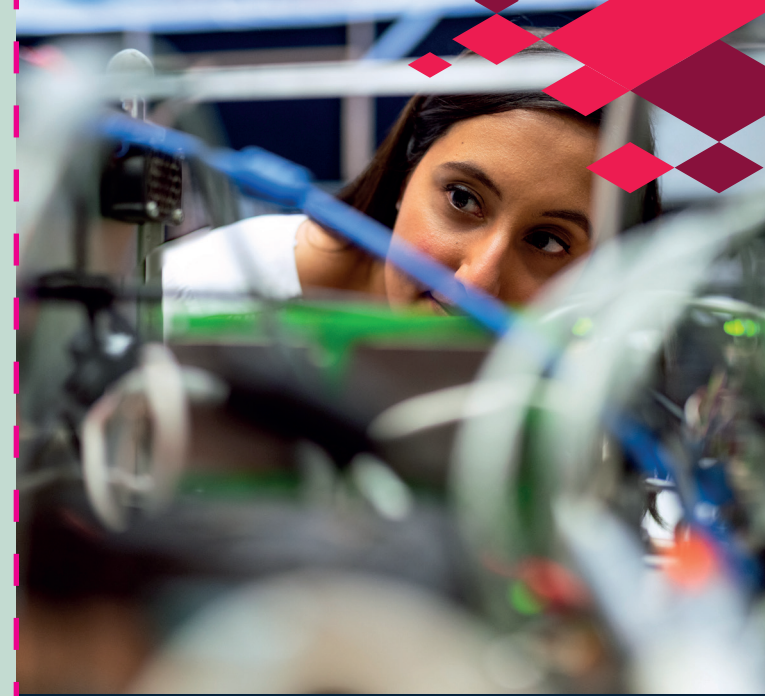
### ◆ Contribute to the sector

Support your local branch, take part in Special Interest Groups and career spotlights, or get involved with consultation responses.

### ◆ Member discounts

Receive discounts on our annual conference tickets, books, Fire Risk register applications and some courses.

For the full list of benefits see [www.ife.org.uk/member-benefits](http://www.ife.org.uk/member-benefits)



## Our qualifications

### Enhance your knowledge with us

IFE qualifications set professional standards for those operating in fire professional roles. They provide assessment and recognition of knowledge and understanding in critical areas including fire engineering science, fire safety, fire service operations and incident command, fire investigation and passive fire protection.

All qualifications and assessment material is developed and quality assured by industry experts, who bring extensive experience and up to date knowledge to the assessment process.

For more information about our qualifications, visit [www.ife.org.uk/qualifications](http://www.ife.org.uk/qualifications)