

BRIGGS
safetywear

EST 1944



Reebok



AUTUMN/WINTER 2024

www.briggssafetywear.com

CONTENTS

- 4 All Terrain Freedom
- 6 FE4 Adventure Safety
- 11 BB4500 Safety
- 14 Excel Light Safety
- 19 Fusion Flexweave Safety
- 21 Fusion Formidable Work
- 24 Royal Glide/Speed TR Safety
- 26 Speed TR Safety
- 28 Trailgrip Safety
- 31 Reebok sole



MEMORYTECH MASSAGE

MemoryTech Massage footbeds form to the unique contours of your feet for immediate comfort and lasting cushioning.

Profiled pods sooth tight muscles with every step for a treat your feet will thank you for.

MemoryTech footbeds are removable and machines washable for durability and longevity.

XTR® BRAND COMPOSITE TOE CAP

The XTR® Brand composite toe cap provides extra toe room and comfort; is lightweight, strong as steel and will not conduct heat, cold or electricity. The XTR® Brand composite toe cap meets or exceeds the ASTM F2413 standard for protective footwear.

FUSION FLEXWEAVE WORK



FLOATRIDE ENERGY
FLOATRIDE ENERGY MESHES IS FLEXIBLE, RESILIENT, AND PROVIDES PREMIUM RESPONSIVE CUSHIONING

STRETCH AND FLEXWEAVE UPPER FOR SOFTWEAVE, DYNAMIC SUPPORT WITH RESPONSIBILITY AND STRENGTH

COMPOSITE XTR MESHES PROVIDES ASTM F2413 SAFETY STANDARDS

FLOATRIDE ENERGY MESHES IS LIGHTER THAN TRADITIONAL EVA

SLIP AND OIL RESISTANT OUTSOLE WITH SCRAMBLING FOR ADAPTIVE FLEXIBILITY

FEATURING: FLOATRIDE ENERGY

- FEEL FAST**
 - Springy with bounce
 - Lighter than EVA
- FEEL FRESH**
 - Lightweight, flexible, and resilient
- FEEL FUELED**
 - Energy return with every step
 - Low compression set



SLIP RESISTING

ALL TERRAIN FREEDOM SAFETY

Reebok



All Terrain Freedom Trail Running Work Shoe

Style R4094
Gender Men's
Toe Alloy
Upper Mesh and Ripstop Fabric
Color Grey Lava
Size 6 - 13



Slip SRC
Oil Better
Metal Chips Good
Heat Good
Abrasion Better
Chemicals Better

Lining Seamless Neoprene with Bootie Design
Insole MemoryTech Memory Foam Cushion Removable Footbed
Outsole Slip Resistant Rubber Outsole with Trail Lugs and Flex Grooves
Special Features No Exposed Metal on Upper

Product Description

Designed to take on any terrain the work day throws at you. Slip on the All Terrain Freedom and conquer concrete, mud, rocks, and anything in between. A lugged rubber outsole and gripping grooves provide traction, step after step, mile after mile. The full-foot bootie construction keeps mud and moisture out, and keeps comfort in.

Product Features

EN ISO 20345, S1P, SRC, Alloy Toe, Antistatic

Bullet Points

- Bootie design upper with ripstop fabric for a seamless, close fit and durability
- Low-cut design offers freedom of motion at the ankle
- Neoprene lining for a glove-like fit
- Full height midsole with a soft, lightweight foam provides cushioning and comfort
- Rubber outsole with strategically placed aggressive lugs provide traction and slip resistance
- Flex grooves offer enhanced grip for tight or slippery turns



NEW



**AVAILABLE
FROM
SEPT 24**

FE4 ADVENTURE SAFETY

FE4 Adventure Safety

Athletic Safety Shoe



AVAILABLE FROM SEPT 24

Style R3610
Gender Men's
Toe Composite
Upper Microfiber, Mesh, and TPU
Color Black and Orange
Size 3 - 13



Slip SRC
Oil Better
Metal Chips Better
Heat Better
Abrasion Better
Chemicals Better

Lining Microfiber Lining

Insole Molded Polyurethane Foam

Outsole Floatride Energy Midsole with Lugged Slip Resistant Rubber Skin and Toe Bumper

Special Features 100% Non-Metallic, Extra Wide Toe, Floatride Energy

Product Description

Give your feet what they deserve with out of the box comfort, working with confidence and fuel that Floatride Energy provides all day.

Product Features

EN ISO 20345, S3S, Composite Toe, XTR® Extra Wide, Composite Toe, Anti-Static, Electrostatic Dissipative, Puncture Resistant Midsole - PS, Slip Resistant

Bullet Points

- Floatride Energy Foam midsole keeps you feeling fresh, fast, and fueled
- Durable and grippy rubber outsole keeps you on your feet when you are on the move, meeting EN ISO 20345 coefficient of friction standards for slip resistance on ceramic tile floor with NaLS and on steel floor with glycerine
 - Cushioned forefoot for extra comfort
 - Beveled heel lessens impact and allows you to land smoothly
- Durable toe bumper adds durability and strength while XTR Brand Extra-Wide Composite Toe Cap meets or exceeds EN ISO 20345 standard for protective footwear
 - S3S - Antistatic with whole shoe water resistance and outsole penetration resistance

FE4 Adventure Safety

Athletic Safety Shoe



AVAILABLE FROM SEPT 24

Style R3611
Gender Men's
Toe Composite
Upper Microfiber, Mesh, and TPU
Color Blue and Yellow
Size 3 - 13



Slip SRC
Oil Better
Metal Chips Better
Heat Better
Abrasion Better
Chemicals Better

Lining Microfiber Lining

Insole Molded Polyurethane Foam

Outsole Floatride Energy Midsole with Lugged Slip Resistant Rubber Skin and Toe Bumper

Special Features 100% Non-Metallic, Extra Wide Toe, Floatride Energy

Product Description

Give your feet what they deserve with out of the box comfort, working with confidence and fuel that Floatride Energy provides all day.

Product Features

EN ISO 20345, S1PS, Composite Toe, XTR® Extra Wide, Composite Toe, Anti-Static, Electrostatic Dissipative, Puncture Resistant Midsole - PS, Slip Resistant

Bullet Points

- Floatride Energy Foam midsole keeps you feeling fresh, fast, and fueled
- Durable and grippy rubber outsole keeps you on your feet when you are on the move, meeting EN ISO 20345 coefficient of friction standards for slip resistance on ceramic tile floor with NaLS and on steel floor with glycerine
 - Cushioned forefoot for extra comfort
 - Beveled heel lessens impact and allows you to land smoothly
- Durable toe bumper adds durability and strength while XTR Brand Extra-Wide Composite Toe Cap meets or exceeds EN ISO 20345 standard for protective footwear
 - S1PS - Antistatic with outsole penetration resistance



FE4 Adventure Safety

Athletic Work Shoe with BOA

AVAILABLE FROM SEPT 24



Style R3613
Gender Men's
Toe Composite
Upper Microfiber, Mesh, and TPU
Color Black and Grey
Size 3 - 13

Slip SRC
Oil Better
Metal Chips Better
Heat Better
Abrasion Better
Chemicals Better

Lining Microfiber Lining
Insole Molded Polyurethane Foam
Outsole Floatride Energy Midsole with Lugged Slip Resistant Rubber Skin and Toe Bumper
Special Features 100% Non-Metallic, Extra Wide Toe, Floatride Energy, BOA® Fit System

Product Description

Give your feet what they deserve with out of the box comfort, working with confidence and fuel that Floatride Energy provides all day.

Bullet Points

- The BOA® Fit System delivers micro-adjustable, precision fit engineered to perform in the toughest conditions
- Meets EN ISO 61340 standards for ESD footwear, protecting sensitive equipment from static electric discharge's potential damage
- Durable and grippy rubber outsole keeps you on your feet when you are on the move, meeting EN ISO 20345 coefficient of friction standards for slip resistance on ceramic tile floor with NaLS and on steel floor with glycerine
- Cushioned forefoot for extra comfort
- Beveled heel lessens impact and allows you to land smoothly
- Durable toe bumper adds durability and strength

Product Features

EN ISO 20345, S1PS, Composite Toe, XTR® Extra Wide, Composite Toe, Anti-Static, Electrostatic Dissipative, Puncture Resistant Midsole - PS, Slip Resistant



BB4500



BB4500 Work

Low Cut Work Sneaker - S3 SRC



Style R4162
Gender Men's
Toe Composite
Upper Full Grain Water-Resistant Leather
Color Black and White
Size 3 - 13



Slip SRC
Oil Better
Metal Chips Better
Heat Good
Abrasion Better
Chemicals Better

Lining Moisture Wicking Nylon Mesh
Insole MemoryTech Memory Foam Removable Cushion Footbed
Outsole Slip Resistant Rubber Outsole
Special Features No Exposed Metal on Upper, Non-Metallic Puncture Resistant Midsole Plate, Extra Wide Toe, Dual Resistor Static Dissipative

Product Description

Inspire your work and gain some work cred with your co-workers with these heritage basketball-inspired styles from Reebok's timeless sneaker designs. Show some respect for your work while showcasing these timeless styles. These designs will keep you protected while bringing an everyday style and class to your job.

Product Features

EN ISO 20345, S3, Puncture Resistant Midsole, Composite Toe, XTR® Brand Composite Toe, Slip Resistant (SRC), Water Resistant

Bullet Points

- Low cut classic basketball-inspired designs offer optimal support and stability
- Water resistant (S3) rated leather upper
- Durable slip resistant rubber outsole keeps sneakers tough against any work environment
- MemoryTech Memory Foam Cushion Footbed adds extra shock absorption and cushion
- XTR® brand composite toe reduces weight while maintaining impact protection (meets or exceeds EN20345)
- 360 degree sidewall stitch for long-lasting durability

T: 0116 2444 700
 E: sales@briggssafetywear.co.uk
 www.briggssafetywear.com



BB4500 Safety

High Top Safety Sneaker

Style R4132
Gender Men's
Toe Composite
Upper Full Grain Water-Resistant Leather
Color Black and Red
Size 3 - 13



Slip SRC
Oil Better
Metal Chips Better
Heat Good
Abrasion Better
Chemicals Better

Lining Moisture Wicking Nylon Mesh
Insole MemoryTech Memory Foam Removable Cushion Footbed
Outsole Slip Resistant Rubber Outsole
Special Features No Exposed Metal on Upper, Non-Metallic Puncture Resistant Midsole Plate, Extra Wide Toe, Dual Resistor Static Dissipative

Product Description

Inspire your work and gain some work cred with your co-workers with these heritage basketball-inspired styles from Reebok's timeless sneaker designs. Show some respect for your work while showcasing these timeless styles. These designs will keep you protected while bringing an everyday style and class to your job.

Product Features

EN ISO 20345, S3, Puncture Resistant Midsole, Composite Toe, XTR® Brand Composite Toe, Slip Resistant (SRC), Water Resistant

Bullet Points

- High top classic basketball-inspired designs offer optimal support and stability
- Water resistant (S3) rated leather upper
- Durable slip resistant rubber outsole keeps sneakers tough against any work environment
- MemoryTech Memory Foam Cushion Footbed adds extra shock absorption and cushion
- XTR® brand composite toe reduces weight while maintaining impact protection (meets or exceeds EN20345)
- 360 degree sidewall stitch for long-lasting durability

T: 0116 2444 700
 E: sales@briggssafetywear.co.uk
 www.briggssafetywear.com



Excel Light

Athletic Mid Cut - S3 SRC



Style R1037
Gender Men's
Toe Alloy
Upper Water Resistant Leather
Color Black
Size 3 - 13

Slip SRC
Oil Better
Metal Chips Good
Heat Good
Abrasion Better
Chemicals Better

Lining Breathable Moisture Wicking Mesh
Insole MemoryTech Massage Removable Cushion Footbed
Outsole Rubber Bottom and Lightweight Injected EVA Cushion Midsole
Special Features No Exposed Metal on Upper, Non-Metallic Puncture Resistant Midsole Plate

Product Description

Excel Light achieves maximum lightness and flexibility in a work shoe. With flex grooves, the lightweight injected EVA foam midsole reduces weight and allows for greater range of motion. Mesh uppers allow for ultimate breathability and moisture transfer for all day cooling comfort. A MemoryTech footbed adapts to the unique contours of your foot.

Product Features

EN ISO 20345, S3, Aluminum Toe, Anti-Static, Puncture Resistant Midsole, Slip Resistant (SRC), Water Resistant

Bullet Points

- Non-metallic, puncture resistant, and composite fabric plate is lighter and more flexible than a steel plate while providing maximum protection with 100% foot surface coverage.
- MemoryTech footbed adapts to the contours of your foot.
- Aluminum toe cap reduces weight while maintaining impact protection (meets or exceeds EN ISO 20345 safety standards).
- Slip resistance on steel ground with glycerine (Requirement EN ISO 20345) Heel 7° ≥ 0,13 RESULT = 0,26 Level ≥ 0,18 RESULT = 0,28
- Slip resistance on ceramic ground with detergent (Requirement EN ISO 20345) Heel 7° ≥ 0,28 RESULT = 0,55 Level ≥ 0,32 RESULT = 0,66

Excel Light

Athletic Work Shoe - S3 SRC



Style R1036
Gender Men's
Toe Alloy
Upper Water Resistant Leather
Color Black
Size 3 - 13



Slip SRC
Oil Better
Metal Chips Good
Heat Good
Abrasion Better
Chemicals Better

Lining Moisture Wicking Nylon Mesh

Insole MemoryTech Massage Removable Cushion Footbed

Outsole Rubber Bottom and Lightweight Injected EVA Cushion Midsole

Special Features No Exposed Metal on Upper, Non-Metallic Puncture Resistant Midsole Plate

Product Description

Excel Light achieves maximum lightness and flexibility in a work shoe. With flex grooves, the lightweight injected EVA foam midsole reduces weight and allows for greater range of motion. Mesh uppers allow for ultimate breathability and moisture transfer for all day cooling comfort. A MemoryTech footbed adapts to the unique contours of your foot.

Product Features

EN ISO 20345, S3, Aluminum Toe, Anti-Static, Puncture Resistant Midsole, Slip Resistant (SRC), Water Resistant

Bullet Points

- Non-metallic, puncture resistant, and composite fabric plate is lighter and more flexible than a steel plate while providing maximum protection with 100% foot surface coverage.
- MemoryTech footbed adapts to the contours of your foot.
- Aluminum toe cap reduces weight while maintaining impact protection (meets or exceeds EN ISO 20345 safety standards).
- Slip resistance on steel ground with glycerine (Requirement EN ISO 20345) Heel 7° ≥ 0,13 RESULT = 0,26 Level ≥ 0,18 RESULT = 0,28
- Slip resistance on ceramic ground with detergent (Requirement EN ISO 20345) Heel 7° ≥ 0,28 RESULT = 0,55 Level ≥ 0,32 RESULT = 0,66



WOMEN'S Excel Light

Athletic Work Shoe - S1P SRC

Style R131
Gender Women's
Toe Alloy
Upper Microfiber and Nylon Mesh
Color Navy with Teal Trim
Size 3 - 8



Slip SRC
Oil Better
Metal Chips Good
Heat Good
Abrasion Better
Chemicals Better

Lining Breathable Moisture Wicking Mesh

Insole MemoryTech Memory Foam Removable Cushion Footbed

Outsole XL ExtraLight® Fuel, Oil, and Abrasion Resistant EVA Blend

Special Features No Exposed Metal on Upper, Non-Metallic Puncture Resistant Midsole Plate

Product Description

Excel Light achieves maximum lightness and flexibility in a work shoe. With flex grooves, the XL ExtraLight® foam midsole reduces weight and allows for greater range of motion. Mesh uppers allow for ultimate breathability and moisture transfer for all day cooling comfort. A MemoryTech footbed adapts to the unique contours of your foot.

Product Features

EN ISO 20345, S1P, Aluminum Toe, Anti-Static, Puncture Resistant Midsole, Slip Resistant (SRC)

Bullet Points

- Non-metallic, puncture resistant, and composite fabric plate is lighter and more flexible than a steel plate while providing maximum protection with 100% foot surface coverage.
- MemoryTech footbed adapts to the contours of your foot.
- Aluminum toe cap reduces weight while maintaining impact protection (meets or exceeds EN ISO 20345 safety standards).
- Slip resistance on steel ground with glycerine (Requirement EN ISO 20345) Heel 7° ≥ 0,13 RESULT = 0,26 Level ≥ 0,18 RESULT = 0,28
- Slip resistance on ceramic ground with detergent (Requirement EN ISO 20345) Heel 7° ≥ 0,28 RESULT = 0,55 Level ≥ 0,32 RESULT = 0,66

Excel Light

Athletic Mid Cut - S3 SRC



Style R1035
Gender Men's
Toe Alloy
Upper Water Resistant Suede Leather
Color Navy Blue
Size 6 - 13



Slip SRC
Oil Better
Metal Chips Good
Heat Good
Abrasion Better
Chemicals Better



Lining Breathable Moisture Wicking Mesh
Insole MemoryTech Memory Foam Removable Cushion Footbed
Outsole XL ExtraLight® Fuel, Oil, and Abrasion Resistant EVA Blend
Special Features No Exposed Metal on Upper, Non-Metallic Puncture Resistant Midsole Plate

Product Description

Excel Light achieves maximum lightness and flexibility in a work shoe. With flex grooves, the XL ExtraLight® foam midsole reduces weight and allows for greater range of motion. Mesh uppers allow for ultimate breathability and moisture transfer for all day cooling comfort. A MemoryTech footbed adapts to the unique contours of your foot.

Product Features

EN ISO 20345, S3, Aluminum Toe, Anti-Static, Puncture Resistant Midsole, Slip Resistant (SRC), Water Resistant

Bullet Points

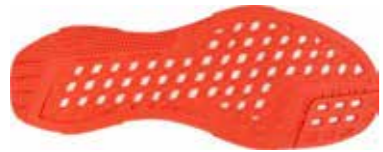
- Non-metallic, puncture resistant, and composite fabric plate is lighter and more flexible than a steel plate while providing maximum protection with 100% foot surface coverage.
- MemoryTech footbed adapts to the contours of your foot.
- Aluminum toe cap reduces weight while maintaining impact protection (meets or exceeds EN ISO 20345 safety standards).
- Slip resistance on steel ground with glycerine (Requirement EN ISO 20345) Heel 7° ≥ 0,13 RESULT = 0,26 Level ≥ 0,18 RESULT = 0,28
- Slip resistance on ceramic ground with detergent (Requirement EN ISO 20345) Heel 7° ≥ 0,28 RESULT = 0,55 Level ≥ 0,32 RESULT = 0,66



FUSION FORMIDABLE WORK

Fusion Flexweave™ Work

Athletic Work Shoe - S1P SRC



Style R1076
Gender Men's
Toe Composite
Upper Ultraknit and Flexweave™
Color Black, White, and Orange
Size 3 - 13

Slip SRC
Oil Better
Metal Chips Good
Heat Good
Abrasion Better
Chemicals Better

Lining Moisture Wicking Nylon Mesh
Insole EVA Cushion Removable Footbed
Outsole Floatride Energy Foam Midsole and Rubber Slip Resistant Outsole
Special Features Flexweave™, Floatride Energy Foam, Extra Wide Toe, 100% Non-Metallic,

Product Description

With a Floatride Energy foam midsole, the Fusion Flexweave™ Work provides cushioning with a kick. Floatride Energy foam is supportive, highly responsive, and lighter than traditional EVA. The Flexweave™ fabric delivers flexible support, lightweight durability, and breathable strength, allowing you to put more muscle into every fibre. The slip resistant rubber outsole features visual footmapping for adaptive, multi-dimensional flexibility.

Product Features

EN ISO 20345, S1P, Composite Toe, XTR® Brand Composite Toe, Slip Resistant (SRC), Anti-Static

Bullet Points

- Ultraknit and Flexweave™ upper for lightweight durable support with breathability and strength.
- Floatride Energy foam midsole is lighter than traditional EVA
- Floatride Energy midsole is flexible, resilient, and provides premium responsive cushioning
- Slip resistant rubber outsole with footmapping for adaptive flexibility
- Composite toe meets or exceeds EN ISO 20345 safety standards





Fusion Formidable Work

Athletic Work Shoe - S3 SRC



Style R1080
Gender Men's
Toe Composite
Upper High Quality Water Resistant Leather
Color Black
Size 6 - 13



Slip SRC
Oil Better
Metal Chips Good
Heat Good
Abrasion Better
Chemicals Better

Lining Moisture Wicking Nylon Mesh

Insole EVA Cushion Removable Footbed

Outsole Floatride Energy Foam Midsole and Rubber Slip Resistant Outsole

Special Features Floatride Energy Foam, Extra Wide Toe, 100% Non-Metallic

Product Description

With a Floatride Energy foam midsole, the Fusion Formidable Work provides cushioning with a kick. Floatride Energy foam is supportive, highly responsive, and lighter than traditional EVA. The Formidable all leather upper takes on the most aggressive work environments. The slip resistant rubber outsole features visual footmapping for adaptive, multi-dimensional flexibility.

Product Features

EN ISO 20345, S3, Composite Toe, XTR® Brand Composite Toe, Slip Resistant (SRC), ESD/DR

Bullet Points

- All-leather crazy horse upper protects against the most aggressive work environments
- Floatride Energy foam midsole is lighter than traditional EVA
- Floatride Energy midsole is flexible, resilient, and provides premium responsive cushioning
- Slip resistant rubber outsole with footmapping for adaptive flexibility
- Composite toe meets or exceeds EN ISO 20345 safety standards



Fusion Formidable Work

Athletic Mid Work Shoe - S3 SRC



Style R1081
Gender Men's
Toe Composite
Upper High Quality Water Resistant Leather
Color Black
Size 6 - 13



Slip SRC
Oil Better
Metal Chips Good
Heat Good
Abrasion Better
Chemicals Better

Lining Moisture Wicking Nylon Mesh

Insole EVA Cushion Removable Footbed

Outsole Floatride Energy Foam Midsole and Rubber Slip Resistant Outsole

Special Features Floatride Energy Foam, Extra Wide Toe, 100% Non-Metallic

Product Description

With a Floatride Energy foam midsole, the Fusion Formidable Work provides cushioning with a kick. Floatride Energy foam is supportive, highly responsive, and lighter than traditional EVA. The Formidable all leather upper takes on the most aggressive work environments. The slip resistant rubber outsole features visual footmapping for adaptive, multi-dimensional flexibility.

Product Features

EN ISO 20345, S3, Composite Toe, XTR® Brand Composite Toe, Slip Resistant (SRC), Anti-Static

Bullet Points

- All-leather crazy horse upper protects against the most aggressive work environments
- Floatride Energy foam midsole is lighter than traditional EVA
- Floatride Energy midsole is flexible, resilient, and provides premium responsive cushioning
- Slip resistant rubber outsole with footmapping for adaptive flexibility
- Composite toe meets or exceeds EN ISO 20345 safety standards

ROYAL GLIDE



WOMEN'S Royal Glide Classic Work Sneaker

Style R109
Gender Women's
Toe Composite
Upper Suede Leather
Color Navy and Blue
Size 3 - 8



Slip SRC
Oil Better
Metal Chips Better
Heat Better
Abrasion Better
Chemicals Better

Lining Microfiber Lining
Insole MemoryTech Massage Footbed
Outsole EVA Midsole with SR Rubber Bottom
Special Features Extra Wide Toe, 100% Non-Metallic

Product Description

Elevate your workday style with these iconic classic leather sneakers. Add these to your rotation for instant throwback style and easy, everyday wear. These iconic kicks offer extra stability with a TPU heel clip and a high abrasion classic rubber outsole that offers durability and superior traction when you need it most.

Product Features

EN ISO 20345, S1P, Composite Toe, XTR® Brand Composite Toe, Anti-Static, Puncture Resistant Midsole, Slip Resistant (SRC)

Bullet Points

- Show off your enviable leather classic upper with each stride
- Classic low cut suede leather legacy style for easy, daylong work
- MemoryTech Massage footbed adapts to the contours of your foot and provides immediate cushioning
- Subtle iconic side profile for instant throwback style
- High abrasion rubber outsole offers time-tested traction and durability
- TPU heel clip for extra stability

SPEED TR SAFETY



Speed TR Safety

Athletic Safety Shoe



Style R4453
Gender Men's
Toe Composite
Upper Technical Fabric without seams
Color Grey and Black
Size 3 - 13



Lining Moisture Wicking Nylon Mesh
Insole MemoryTech Removable Cushion Footbed
Outsole Dual Density Slip Resistant Rubber Bottom with RopePro Traction
Special Features 100% Non-Metallic, Flex Grooves on Outsole, TPU Stability Zone, Extra Wide Toe

Product Description

Take it up another notch at work with the propulsion and movement of the Speed TR Work. These training shoes are made for quick freedom of movement while also ensuring stability that matches speed. Metasplit flex grooves and RopePro traction on the rubber outsole allow for the versatile all-directional movement while the low profile platform frees up range of motion and quick transitions. The TPU Stability Zone gives plenty of stability and support while also helping with heavy lifting and shock absorption.

Product Features

EN ISO 20345:2022, S1P, Puncture Resistant Midsole, XTR Composite Toe, Slip Resistant, ESD



Bullet Points

- TPU Stability Zone for flared stability and zone support, supporting heavy lifting and shock
- Metasplit Flex Grooves on Rubber Outsole for multidirectional movement and traction
- MemoryTech Memory Foam Footbed adapts to the contours of your foot
- Dual Density Slip Resistant Rubber Bottom with RopePro Traction for extra grip
- Extra Wide Composite Toe reduces weight while maintaining impact protection

Speed TR Safety

Athletic Safety Shoe



Style R4450
Gender Men's
Toe Composite
Upper Technical Fabric without seams
Color Black
Size 3 - 13



Lining Moisture Wicking Nylon Mesh
Insole MemoryTech Removable Cushion Footbed
Outsole Dual Density Slip Resistant Rubber Bottom with RopePro Traction
Special Features 100% Non-Metallic, Flex Grooves on Outsole, TPU Stability Zone, Extra Wide Toe

Product Description

Take it up another notch at work with the propulsion and movement of the Speed TR Work. These training shoes are made for quick freedom of movement while also ensuring stability that matches speed. Metasplit flex grooves and RopePro traction on the rubber outsole allow for the versatile all-directional movement while the low profile platform frees up range of motion and quick transitions. The TPU Stability Zone gives plenty of stability and support while also helping with heavy lifting and shock absorption.

Product Features

EN ISO 20345:2022, S3, Puncture Resistant Midsole, XTR Composite Toe, Slip Resistant, ESD



Bullet Points

- TPU Stability Zone for flared stability and zone support, supporting heavy lifting and shock
- Metasplit Flex Grooves on Rubber Outsole for multidirectional movement and traction
- MemoryTech Memory Foam Footbed adapts to the contours of your foot
- Dual Density Slip Resistant Rubber Bottom with RopePro Traction for extra grip
- Extra Wide Composite Toe reduces weight while maintaining impact protection



Trailgrip Safety

Athletic Safety Shoe - S3 SRC



Style R1050
Gender Men's
Toe Alloy
Upper Water Resistant Leather, Microfiber, and Mesh
Color Black
Size 6 - 13



Slip SRC
Oil Better
Metal Chips Better
Heat Better
Abrasion Better
Chemicals Better

Lining Moisture Wicking Nylon Mesh
Insole MemoryTech Massage Removable Cushion Footbed
Outsole DMXRide Cushion Foam Midsole with Slip Resistant Rubber Outsole
Special Features No Exposed Metal on Upper

Product Description

Charge through work with the Reebok Trailgrip, featuring an active traction rubber lug pattern with outstanding gripping power. A MicroWeb lacing system keeps your foot locked in with lateral stability. The MemoryTech Massage footbed adapts to the contours of your foot. The aluminum toe meet or exceeds EN201345 safety standards.

Bullet Points

- Water resistant (S3) rated leather upper
- DMXRide foam midsole for a responsive feel
- Slip resistant rubber outsole with an active traction lug pattern for durability and grip
- MicroWeb lacing system improves the fit and support
- MemoryTech memory foam footbed adapts to the contours of your foot
- Aluminum toe reduces weight while maintaining impact protection (meets or exceeds EN20345)

Product Features

EN ISO 20345, S3, Aluminum Toe, Anti-Static, Puncture Resistant Midsole, Slip Resistant (SRC), Water Resistant





Trailgrip Safety

Athletic Safety Mid Cut - S3 SRC

Style R1052
Gender Men's
Toe Alloy
Upper Water Resistant Leather, Microfiber, and Mesh
Color Black
Size 6 - 13

Slip SRC
Oil Better
Metal Chips Better
Heat Better
Abrasion Better
Chemicals Better



Lining Moisture Wicking Nylon Mesh
Insole MemoryTech Massage Removable Cushion Footbed
Outsole DMXRide Cushion Foam Midsole with Slip Resistant Rubber Outsole
Special Features No Exposed Metal on Upper

Product Description

Charge through work with the Reebok Trailgrip, featuring an active traction rubber lug pattern with outstanding gripping power. A MicroWeb lacing system keeps your foot locked in with lateral stability. The MemoryTech Massage footbed adapts to the contours of your foot. The aluminum toe meet or exceeds EN ISO 201345 safety standards.

Product Features

EN ISO 20345, S3, Aluminum Toe, Anti-Static, Puncture Resistant Midsole, Slip Resistant (SRC), Water Resistant

Bullet Points

- Water resistant (S3) rated leather upper
- DMXRide foam midsole for a responsive feel
- Slip resistant rubber outsole with an active traction lug pattern for durability and grip
- MicroWeb lacing system improves the fit and support
- MemoryTech memory foam footbed adapts to the contours of your foot
- Aluminum toe reduces weight while maintaining impact protection (meets or exceeds EN ISO 201345)

R109 Women's Royal Glide



R131 Women's Excel Light



R1036 Excel Light



R1050 Trailgrip Safety



R1076 Fusion Flexweave Work



R4094 All Terrain Freedom



R4132 BB4500 Safety High Top



R4450 Speed TR Safety



R3610 FE4 Adventure Safety



R3613 FE4 Adventure Safety



R1035 Excel Light



R1037 Excel Light



R1052 Trailgrip Safety



R1008/1 Fusion Flexweave Work



R4132 BB4500 Work Low Cut



R4453 Speed TR Safety



R3611 FE4 Adventure Safety



REEBOK

PERFORMANCE
IN MOTION

Reebok



Briggs Safetywear
Himalayan House
430 Thurmaston Boulevard
Leicester. LE4 9LE
T: 0116 2444 700
E: sales@briggssafetywear.co.uk

www.briggssafetywear.com

