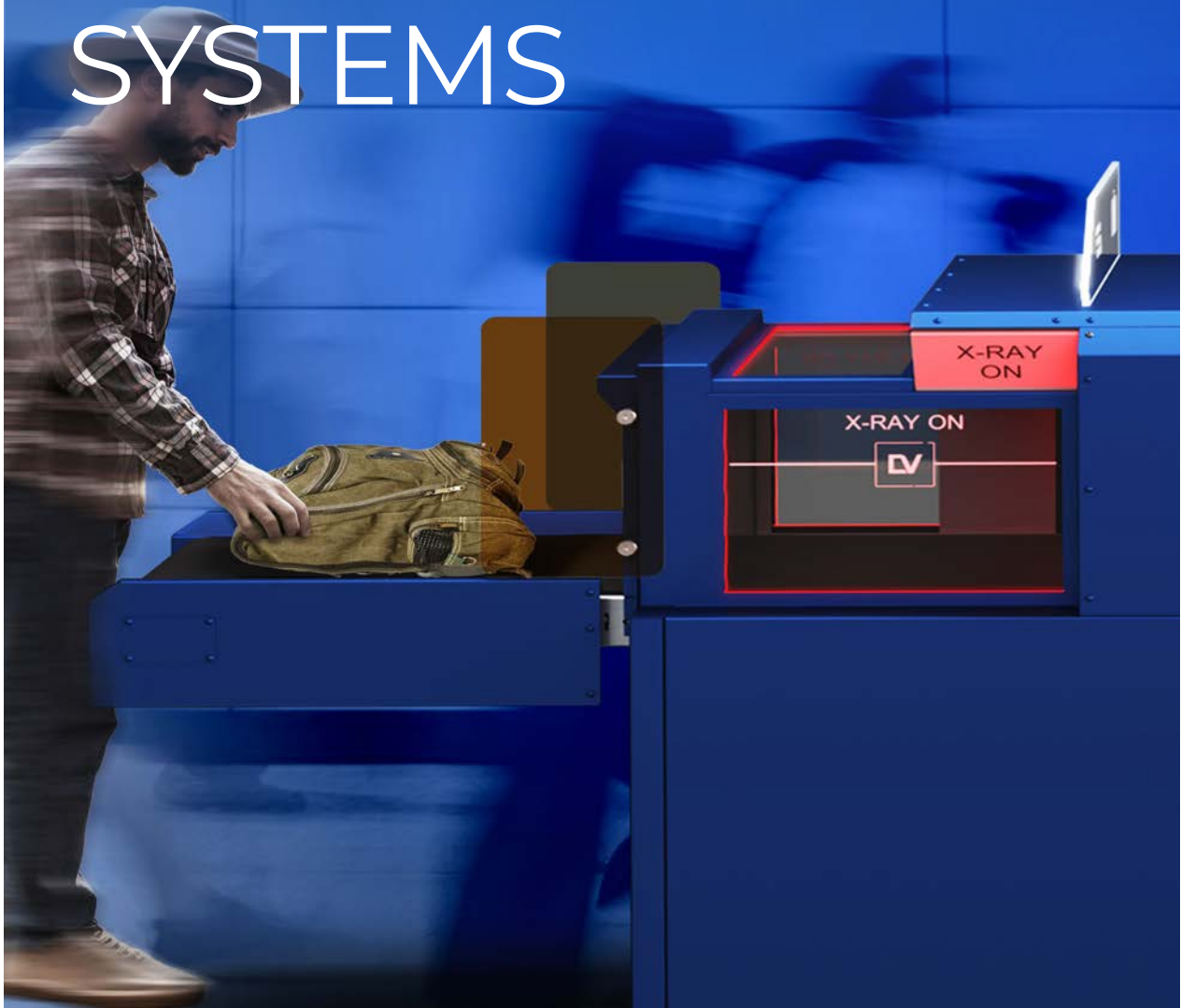




LINEV SYSTEMS UK

# NEXT-GEN SECURITY X-RAY SCREENING SYSTEMS



PEOPLE  
SCREENING



PARCEL, BAGGAGE &  
SMALL CARGO INSPECTION



CARGO &  
VEHICLE INSPECTION

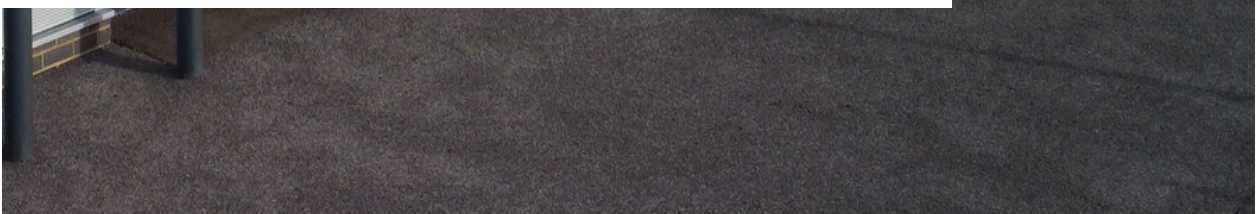


CUSTOMISED  
SOLUTIONS



#### MISSION PILLARS:

PROTECTING LIVES, DRIVING  
INNOVATION, AND EVOLVING FOR  
A SAFER, BETTER FUTURE – THIS IS  
LINEV SYSTEMS, GUIDED BY OUR CORE  
VALUES: LIFE, INNOVATION, EVOLUTION



Welcome to LINEV Systems®, your trusted partner for cutting-edge X-ray technology solutions. With over 35 years of experience, LINEV Systems® has evolved into a global ecosystem of businesses operating under the LINEV® Group umbrella brand.

**WHO WE ARE:** LINEV Systems® is not just a company; it's a brand synonymous with world-class innovation in the Security, Analytical, Forensics, and NDT markets. Our commitment to delivering high-quality products and solutions is backed by a global network of development, ensuring result-driven performance and unparalleled reliability.

**GLOBAL PRESENCE:** We operate regional offices worldwide for production, sales, and service support. This strategic presence allows us to tailor our solutions to meet the unique requirements of each region, providing our customers with focused attention and products configured to achieve optimal results within specific country guidelines..

**Advantages for our customers:** At LINEV Systems®, customers receive personalised attention to their specific needs. Our products are not one-size-fits-all; they are tailored for regional requirements, reflecting our commitment to understanding and meeting the challenges of diverse markets.

**Innovation at the core:** As part of the LINEV® Group, LINEV Systems® is at the forefront of innovation. The Group organises regional sales efforts and drives research and development for new, innovative solutions that cater to both global and regional needs.

**OUR VISION FOR THE FUTURE:** In a dynamic and unstable world, LINEV Systems® is dedicated to advancing technologies that improve health, safety, and overall well-being. We envision a smart society where the highest quality of life is achieved through scientific truth.

**CUSTOMER FOCUS:** Our customer-focused approach, combined with fast and flexible research and development, allows us to exceed customer expectations continually. We are united under the LINEV® Group umbrella, working towards a common goal of innovation and service excellence. Join us in shaping the future of X-ray technology – choose LINEV Systems® for industry-leading solutions that set new standards and deliver exceptional results worldwide



### THREATS AND SOLUTIONS

Combining innovative threat detection technologies with flexible system designs, LINEV Systems® security inspection systems provide exceptional automated processing, threat recognition and throughput rates.



#### PEOPLE SCREENING

Every day millions of people all over the world pass through security checkpoints, hoping to do so as quickly and conveniently as possible.

To provide them maximum security alongside with the required comfort, LINEV Systems® invented innovative all-encompassing transmission X-ray technology and implemented it into the most contemporary people screening systems on the market.

They allow the detection of all types of dangerous threats, including drugs, weapons, and explosives concealed on the human body, inside it or even hidden in the prosthetic devices much more effective and efficient in comparison with the ordinary metal detectors of competitive systems.

Superior detection levels are an important feature recognised by every LINEV Systems® customer.



#### PARCEL, BAGGAGE AND SMALL CARGO INSPECTION

Modern threats in hold baggage, parcels and small cargo pushed LINEV Systems® to develop systems that are specifically designed to meet the main inspection requirements of customs, logistic centres, postal services or every facility critical to security like schools or embassies. Baggage inspection series possess such

technologies as Dual-Energy, allowing various dangerous objects to be detected by atomic number. Dual View, providing the best detection abilities and AI automatic threat detection software, allowing operators to maximise their effectiveness and lower company maintenance costs.



#### CARGO AND VEHICLE INSPECTION

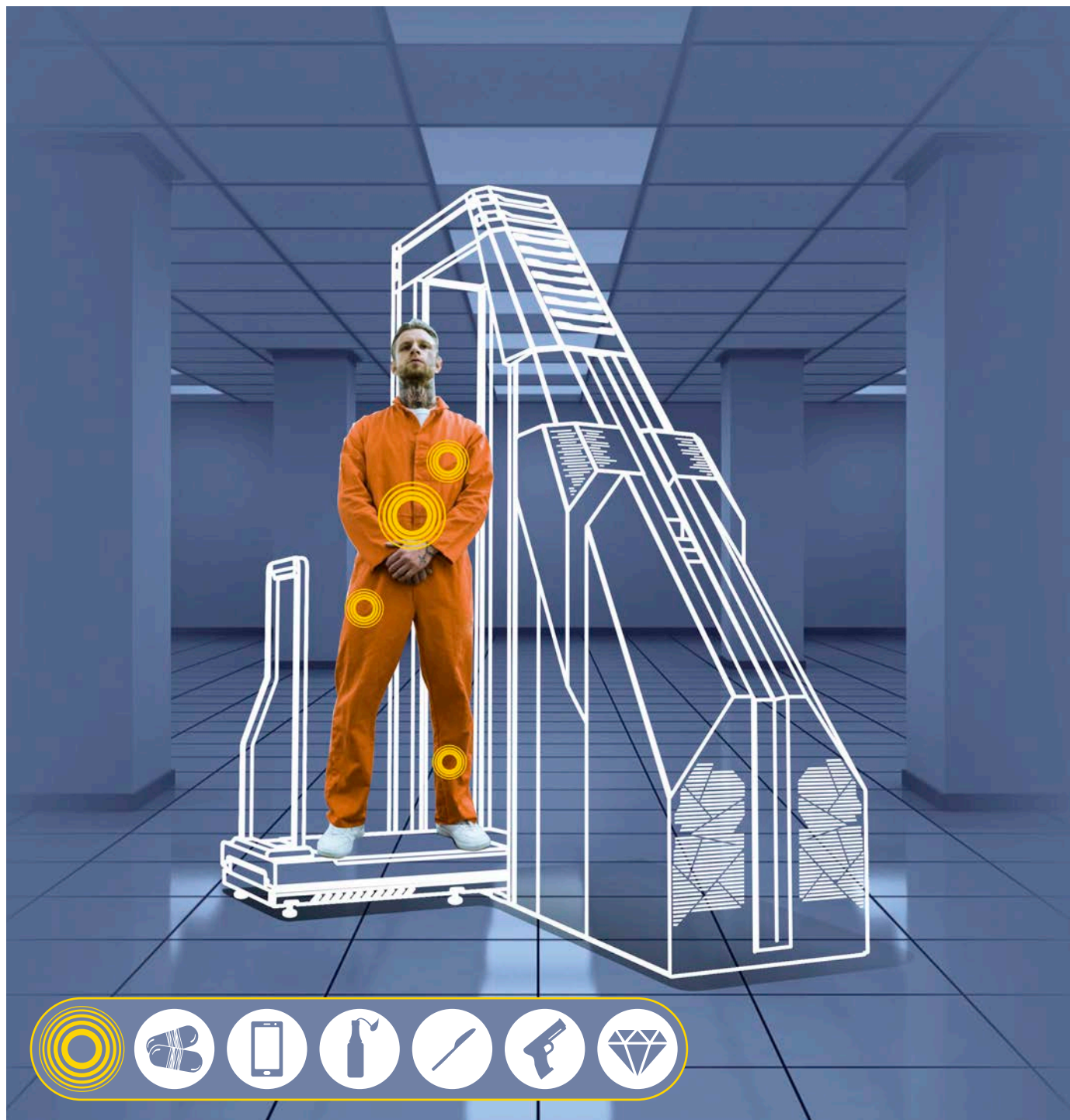
Threat levels in today's modern world from smugglers, criminals and even terrorists, create ever evolving challenges when it comes to security screening without hindrance to the flow of the process. LINEV Systems® portal systems are able to detect various types of hidden threats and prove to be an optimal solution for

the inspection of trucks, passenger vehicles and cargo. DTP series is the perfect fit for all types of high security locations like border crossings, government buildings, embassies or military facilities. Excellent detection ability and image quality position LINEV Systems® as one of the leaders on the market.





## PEOPLE SCREENING



JAILS AND PRISONS



MILITARY FACILITIES



MINES



SECURITY CHECKPOINTS



CRITICAL INFRASTRUCTURE



VIP RESIDENCES



BORDER CROSSINGS



AIRPORTS



PUBLIC EVENTS  
AND VENUES



# FULL BODY SECURITY SCREENING SYSTEMS

## CLEARPASS

REVOLUTIONARY HIGH THROUGHPUT  
BODY SCANNER



Industry's fastest image  
acquisition time of 3 seconds

- Class leading Image quality
- **A-EYE & DruGuard detection software**
- Minimum safe operating area
- Wheelchair friendly and ADA compliant

US Patent: US 11.762.123 B2

## CLEARPASS C.I.

PARTIAL BODY SCANNER



Industry's fastest image  
acquisition time of 3 seconds

CLEARPASS C.I. is the world's most advanced, mobile, single module body scanner, specially designed for the detection of contraband "on" or "in" the human body, by allowing selective area focused screening, which reduces screening and overexposure to other parts of the body.

## COMPASS SMART DV

DUAL VIEW BODY SCANNER



- Best image quality on the market
- Easy relocatable modular design
- Single or Dual View solutions  
for the best threat detection
- Unique software features

US Patents: US 10.473.811 B1  
US 9.595.016 B2

## COMPASS SMART TR

FOCUSED VIEW BODY SCANNER



Advanced security solution with enhanced detection capabilities for fast, safe and precise screening for items on or in the body within the **central area** - the most important screening zone for swallowed threats.



Considering that walk-through metal detectors cannot cope with all the latest security threats, the innovative personal security systems invented by LINEV Systems® are the best and the most effective solution for safety protection. Today when terrorists use more and more sophisticated techniques and means, such as non-metallic weapons, plastic and liquid explosives, and when drug dealers use human bodies as containers for drug transportation, the security systems must be enhanced by the latest technologies and solutions.

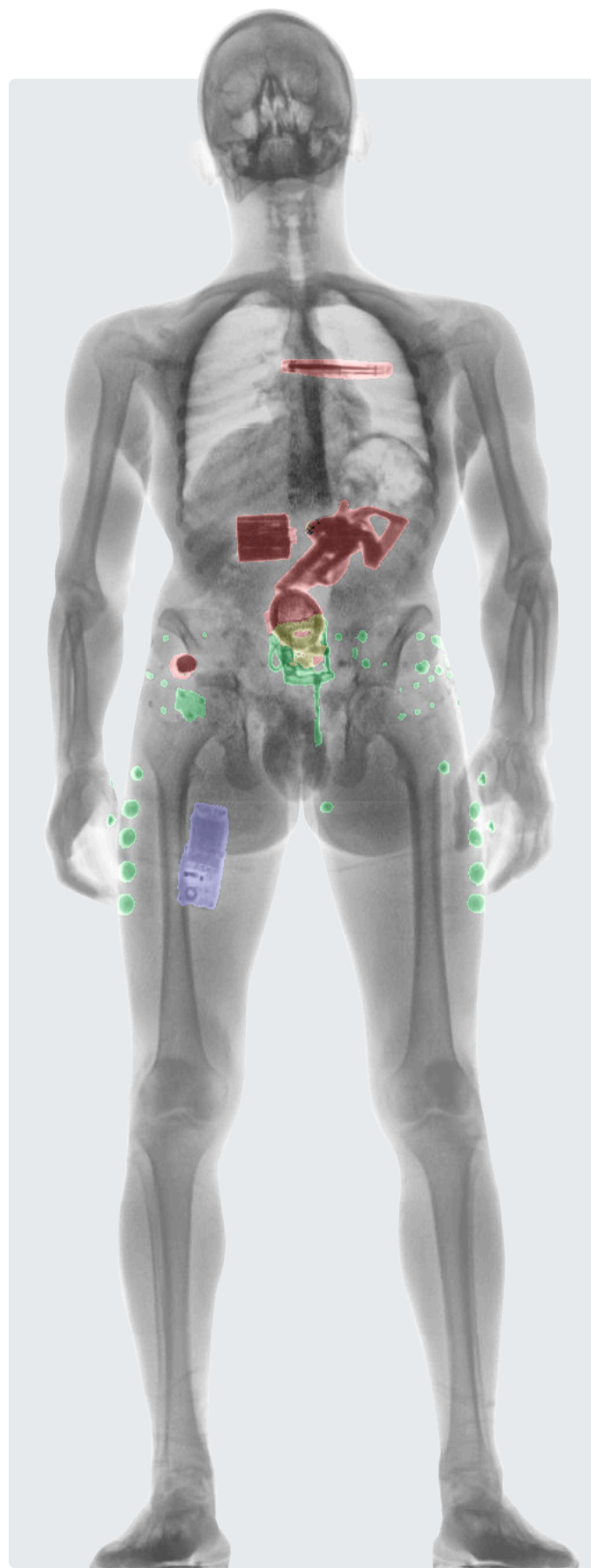
- Innovative imaging technology for personal inspection using an extremely low dose of X-ray transmission (comparable to 2 minutes flight in an airplane).
- Identification of a wide range of dangerous items that can be hidden in body cavities or concealed under clothing.
- High speed scanning improving and simplifying the checkpoint inspection process with no harmful effect on health.

## X-RAY SHIELDING CABIN

SPACE-LIMITED ENVIRONMENT SOLUTION



A compact solution designed for crowded spaces, ensuring superior X-ray safety. Doors, protective glass, and door interlocks for optimised radiation protection. Revolutionize secure scanning in confined areas without compromising operational flexibility.

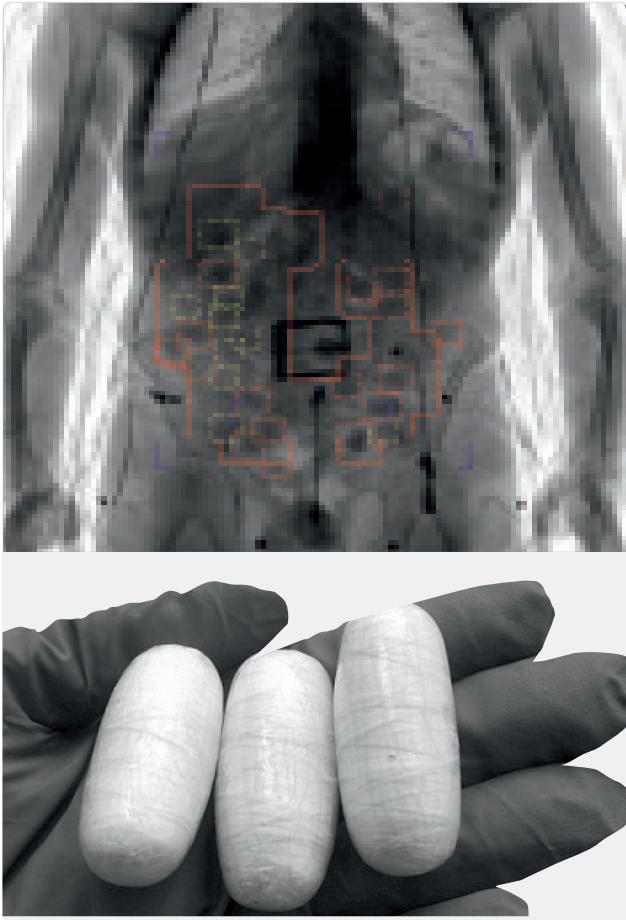


US Patent: US 10.674.972 B1



## UNIQUE SOFTWARE FEATURES

### DRUGGUARD®



DRUGGUARD analyses the body scanner X-ray images and highlights suspected objects in the central area which is mostly commonly used to conceal drugs by a trafficker or “drug mule”. This enhances the detection capability for the operator and increases the throughput of the screening process. Currently deployed at airports and border crossings, it has already proven to be a valuable tool to assist customs and law enforcement personnel in drug interdiction efforts.

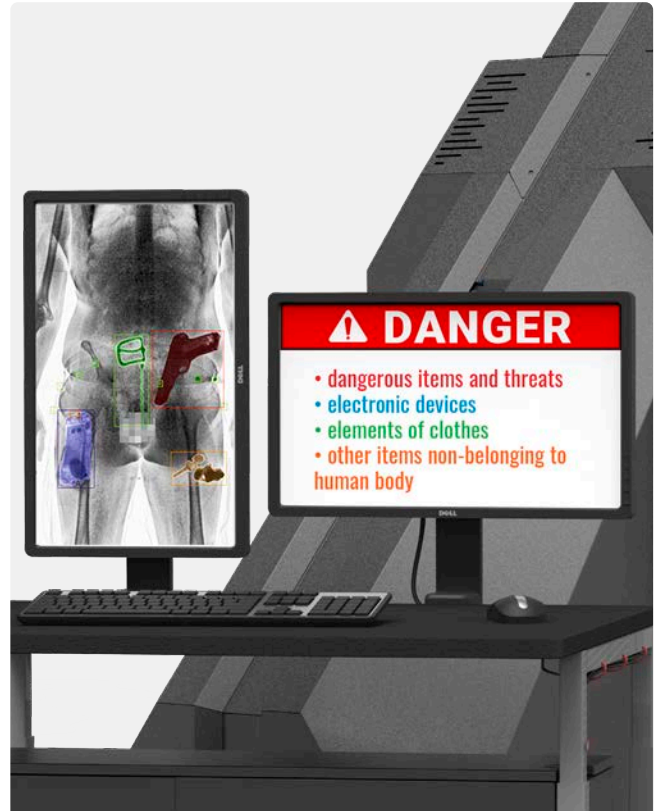
#### FEATURES:

- Effective detection of concealed narcotics
- Reduced image analysis time
- Remote retrofit upgrade
- Storage of all images with highlighted zones
- Low false alarm rate
- Track and boost operator effectiveness

US Patents: US 7.397.892 B2  
US 9.392.983 B2

### A-EYE®

DETECTION ABILITIES BY  
HIGHLIGHTING THREATS WITH  
COLOUR CODED BOXES



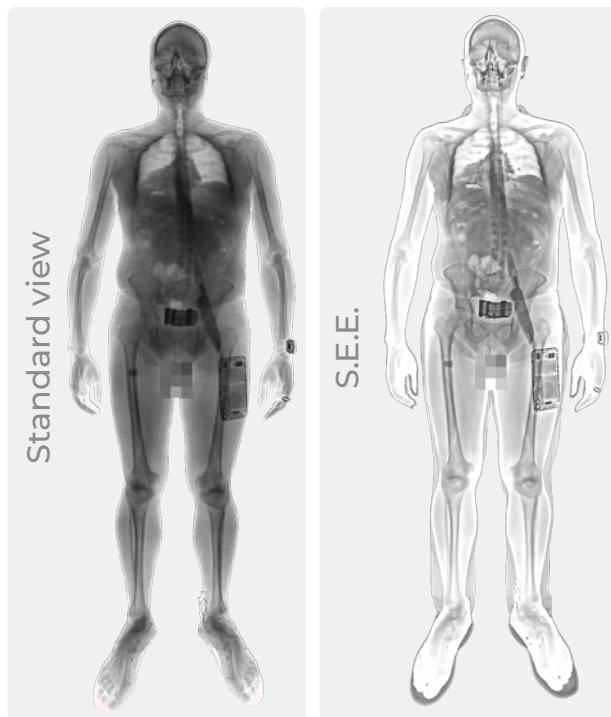
The unique AI algorithms developed by LINEV Systems® provide automatic detection and indication of the prohibited items and threats on or inside the human body and enhance the operator's detection abilities by highlighting threats with colour coded boxes.



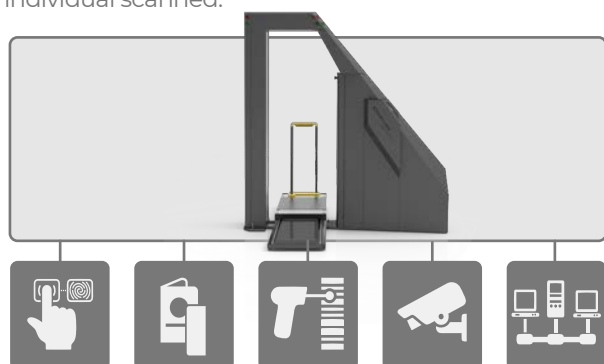


## S.E.E.

### SUPER EDGE ENHANCEMENT



This cutting-edge image enhancement tool uses sophisticated algorithms to provide optimized clarity and contrast of threats and contraband on or within the human body. S.E.E. processes each image to provide the operator with a highly effective super resolution image which is tailored according to individual scanned.



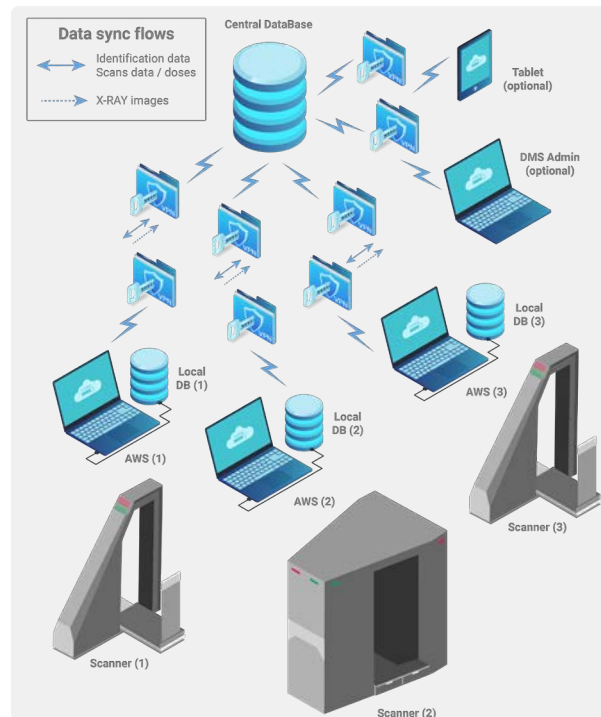
## INTEGRATION

### UNIQUE SOFTWARE

The software provides full and effective integration of the inspection systems into any security infrastructure with the possibility to connect to any of the common option enhancements including document scanners, CCTV, fingerprint scanners, barcode readers, etc.

## DMS

### DATA MANAGMENT SYSTEM



COMPASS DMS is a set of applications used to run X-ray people screening systems. The system allows operators to inspect people and view their accounts, perform data security screening, and view the obtained X-ray images.

### REMOTE OPERATION

COMPASS DMS can unite X-ray scanners from separate locations into one network keeping track of the total X-ray exposure dose for each inspected person, even when the person undergoes a security screening process in different locations.

### DATA SYNC

COMPASS DMS synchronises the information: inspected people's profiles, scan records, and X-ray images between all connected devices.

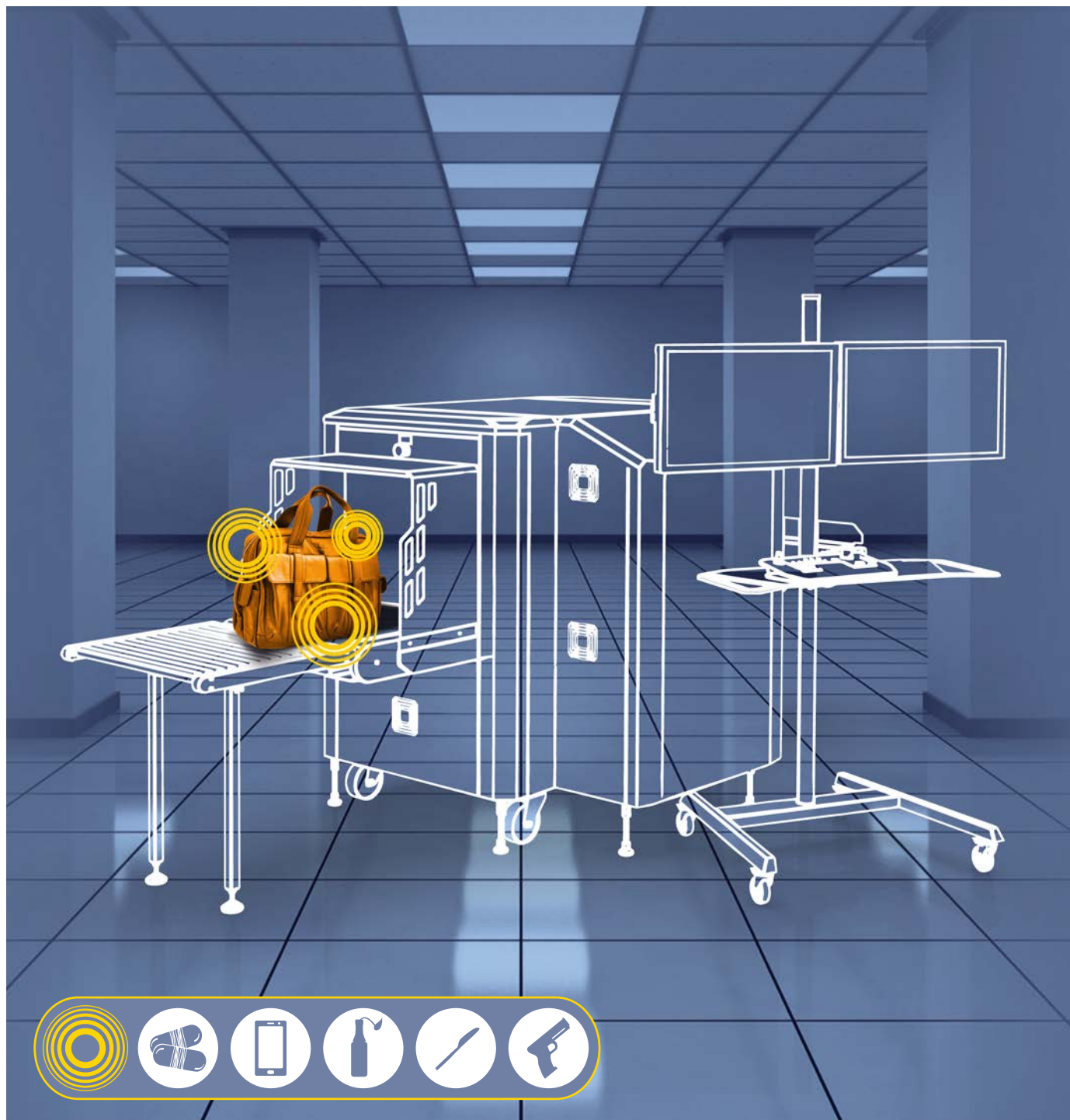
### SECURITY

COMPASS DMS can be installed on the main server, an automated workstation (AWS) or a mobile device like a tablet.

The DMS manages the data and ensures data safety. All COMPASS data, stored on Operator's AWS, Server or transferred via network is subject to protection.



## BAGGAGE SCREENING



JAILS AND PRISONS



MILITARY FACILITIES



MINES



SECURITY CHECKPOINTS



CRITICAL INFRASTRUCTURE



VIP RESIDENCES



BORDER CROSSINGS



AIRPORTS



PUBLIC EVENTS  
AND VENUES



## AUTOMATIC DETECTION SOFTWARE

### CUTTING-EDGE ARTIFICIAL INTELLIGENCE FOR X-RAY THREAT DETECTION

#### A-EYE

##### FEATURES:

- Automated detection of a wide range of threats
- High detection probability
- Low false alarm rate
- Developed using real threat objects (AI Algorithm based and tested on DSA Detection Threat Library)
- Supports inexperienced operators
- High speed automated security checkpoint screening

LINEV Systems® proprietary software A-EYE is an Artificial Intelligence system intended for the automated identification of firearms, firearms components, ammunition, knives and Pyrotechnics. The detection algorithm is an embedded part of the BV product line software.

The algorithm is built using real threat objects that could be expected at events and locations such as theme parks, concerts, sporting events, schools, or other venues which may require security checkpoints. The A-EYE algorithm considers diverse visual backgrounds in baggage consisting of variously dense packed items in any bag type.

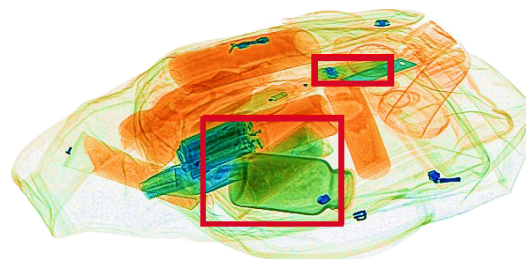
The A-EYE algorithm increases threat detection capabilities for operators with any level of experience. Threats are visually highlighted on the screen by coloured boxes with category identification. Optionally, the software allows the system to automatically stop the conveyor when a threat is detected.

##### BENEFITS

##### OPERATIONAL COSTS OPTIMISATION

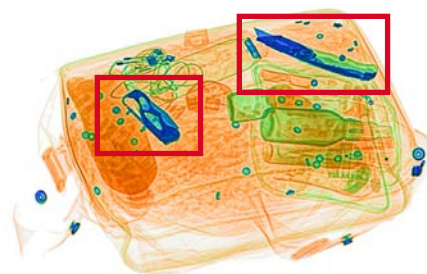
- Increases Operator's efficiency and detection probability
- Streamlined process provides better personal experience
- Minimises Operator's errors through adding an "extra pair of eyes" for X-ray image interpretation

##### PYROTECHNICS



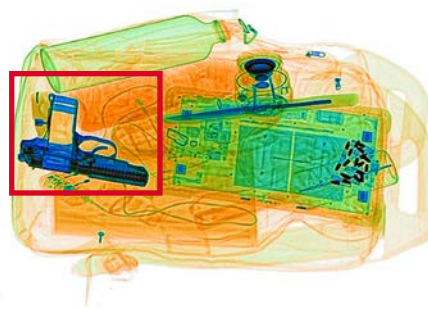
Ideal for sporting events, and public events, our advanced algorithms can recognise and detect flares and smoke bombs even in cluttered baggage

##### KNIVES



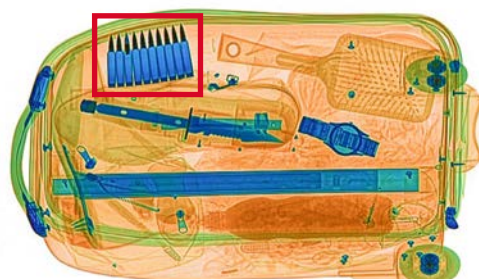
Combi knives, Jack-knives folded/unfolded/ partially folded, Swiss army knife, Lexan's knife, multitools, kitchen knives from 2.36"

##### HANDGUNS



Assembled guns, gun parts, shotguns and submachine guns

##### AMMUNITION



Empty or loaded clips and magazines for automatic guns and revolvers, ammo of various calibers in bulk



## INNOVATIVE SOLUTIONS

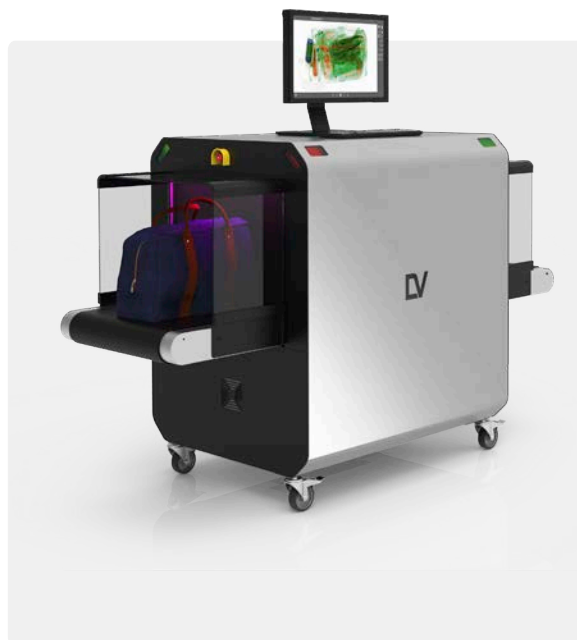
### NEW BV SERIES

**BV 5030 BV 6045**

A QUANTUM STEP FORWARD IN  
SYSTEM AVAILABILITY AND INNOVATION

#### FEATURES

- Modular Architecture
- Multiple colours available
- Telemetry (predictive analytics)
- Artificial Intelligence software system for automated detection of firearms, knives and ammunition
- Automatic identification of suspicious objects (drugs, explosives)
- Availability of 7, 3 colour and infinite colour palettes of images
- The fault-tolerant configuration of the acquisition/analysis workstation
- Quick start and shutdown
- Real-time self-diagnostics



### AUTOMATED HIGH FOOTFALL INSPECTION SYSTEM

THE ULTIMATE BAGGAGE INSPECTION SOLUTION REVOLUTIONISING  
HIGH-TRAFFIC VENUES



Step into the future of security screening, with the cutting-edge high footfall scanner specifically designed for high visitor traffic locations and public spaces where fast screening is paramount, and the reduction of queues is key. Boasting a remarkable screening capability of 1300+ bags per hour, with full AI assistance to lessen the need for constant operator screen analysis, allowing the operator to focus on visitor flow and any other focused bag searches. This redefines efficiency in security screening. With AI-powered Dual View precision, automatic suspected luggage sorting, and a sleek, easy-to-install design, it is the

beacon of proactive security and the must have for a layered security approach.

Unmatched in speed, style, and sophistication, the system is more than a baggage inspection system; it's a safeguarding revolution. Upgrade your security infrastructure, embrace innovation, and usher in a new era of safety – where every scan is a step towards a secure future.





## ALL TUNNEL SIZES

**BV 6045DV**



**BV 6080**



**BV 7080DV**



**BV 100100TB**



**BV 100100DV**



**BV 160180 BV 180180DV**





## MOBILE PEOPLE AND BAGGAGE SCREENING



JAILS AND PRISONS



SECURITY CHECKPOINTS



BORDER CROSSINGS



MILITARY FACILITIES



CRITICAL INFRASTRUCTURE



AIRPORTS



MINES



VIP RESIDENCES



PUBLIC EVENTS  
AND VENUES



## BV 6080M



## BV 100100M BV 100100DVM



### FEATURES:

- Bi-directional scanning
- Single view or dual view
- Large tunnel sizes
- Can be fitted to various types of security vans

### OPTIONS:

- Compatible with various vehicle models
- Registration software
- Passport reader
- CCTV
- Operator room climate control
- Hydraulic stabilisation system
- Folding awnings
- Radiation monitor

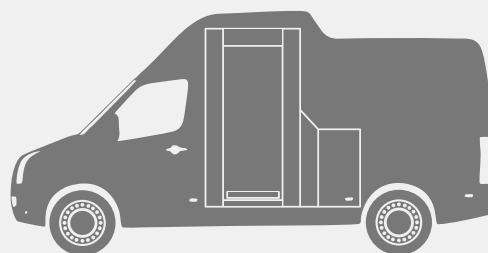
### MOST COMMON MODELS USED:



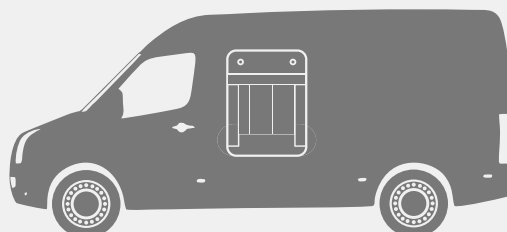
**IVECO**



**COMPASS**  
X-ray body scanner



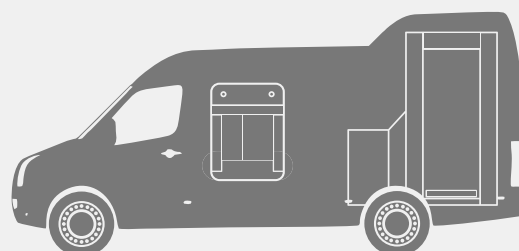
**BV baggage**  
X-ray scanner



**BV baggage**  
X-ray scanner



**COMPASS**  
X-ray body scanner



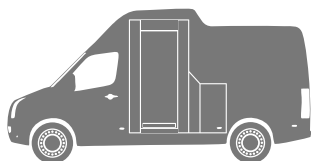


## MIP CONPASS

### MOBILE PEOPLE SCREENING



**CONPASS**  
X-ray body  
scanner



- Security inspection point that comprises of a full body X-ray security system and operator workstation.
- Designed especially for it's flexibility and is perfectly suited for use by law enforcement agencies and event security managers.

- Has an autonomous power supply (no infrastructure required).
- Operates well in any type of weather conditions.

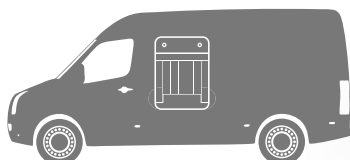
US Patent: US 2016/0051211 A1

## MIP BV

### MOBILE BAGGAGE SCREENING



**BV baggage**  
X-ray scanner



- An effective temporary checkpoint inspection solution for screening of personal belongings, hand luggage and small cargo.

- BV 6080M, BV 100100M and Dual View BV 100100DVM baggage systems are available for all MIP BV and MIP CONPASS BV van series.





## MIP CONPASS BV

MOBILE PEOPLE  
AND BAGGAGE SCREENING

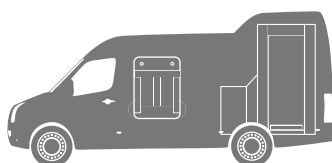


+



BV baggage  
X-ray  
scanner

CONPASS  
X-ray body  
scanner



- A van based security inspection point that comprises of a full body X-ray security system, baggage scanner and operator's workstation. MIP CONPASS BV offers a sophisticated screening solution with a large tunnel size, providing fast, efficient and hassle free security screening anywhere where a van can go.

- Flexible design perfectly suited for use by law enforcement agencies and event security managers
- Operates well in any type of weather conditions and under a wide range of ambient temperature and humidity levels.

## MIP-T CONPASS

A TRAILER-BASED SOLUTION



CONPASS  
X-ray body  
scanner



## VEHICLE AND CARGO INSPECTION



AIRPORTS



SEA PORTS



BORDER  
CROSSINGS



MILITARY  
FACILITIES



SECURITY  
CHECKPOINTS



CRITICAL  
INFRASTRUCTURE



## DUAL ENERGY TECHNOLOGY

DUAL ENERGY imaging technology provides an automatic colour coding material discrimination feature, which enhances the distinguishing between organic, inorganic and metal materials by colours (as a real indication of low Z-medium, Z-high, Z). This feature helps the operator to detect dangerous object made from various materials.

### 3 (THREE) COLOUR CODING

Z-EFFECTIVE RANGE	CATEGORY
0-10	drugs, explosives, organics
10-18	gemstones, explosives,
20 and over	minerals metals, alloys

### 7 (SEVEN) COLOUR CODING

Z-EFFECTIVE RANGE	CATEGORY
0-7	drugs, alcohol
7-10	explosives
10-14	precious stones, glass
14-18	bones, gypsum, salt
18-22	copper sulphate
22-35	brass, steel
35 and over	lead, quartz, gold, platinum



**WEATHER PACKAGES -30°C ... +55°C**



**AUTOMATIC NUMBER PLATE RECOGNITION (ANPR)**



**AUTOMATIC CONTAINER CODE RECOGNITION (ACCR)**



**UNDER VEHICLE SURVEILLANCE SYSTEM (UVSS)**



**WEIGHBRIDGE**



**UNINTERRUPTIBLE POWER SUPPLY (UPS)**



**MODULE FOR OPERATOR**



**INFRARED BARRIERS**



**PHOTO CAPTURING**



**ROADWAY GATE**



**REMOTE WORKPLACE**



**RADIATION MONITOR**



**DIESEL GENERATOR**

## INSPECTION SYSTEMS

### FEATURES:

- **DRIVE-THROUGH TECHNOLOGY.** While vehicle is passing through scanning tunnel, the driver's cab is automatically excluded from radiation.
- **MOBILITY.** The DTP products can be easily relocated by a standard container truck and completely installed with the support of only 2-3 operators.
- **SMALL FOOTPRINT.** The deployment of the DTP products requires a relatively small ground surface without the necessity of creating additional infrastructure.
- **HIGH THROUGHPUT.** Due to drive-through (free-flow) operation mode, the DTP system can inspect up to 120 vehicles per hour.
- **HIGH PENETRATION.** The DTP system provides high quality X-ray images of inspected objects, with a penetration up to 400 mm of steel at a speed of up to 10 km/h.

### INTEGRATION:

- Automatic number plate recognition system (ANPR)
- Under vehicle inspection system (UVIS)
- Integrated radiation portal monitor (IRPM)
- Several systems could be united into the one digital monitoring complex CargoDMS
- Systems could be integrated into any existing infrastructure

### OPTIONS:

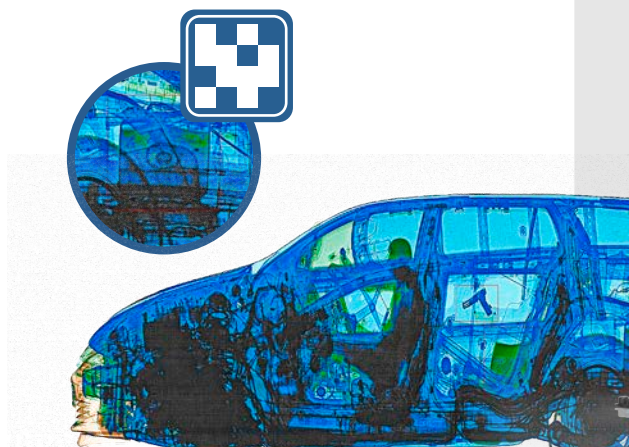
- Throughput capacity up to 120 vehicles per hour
- High quality image with 7 colour-coding
- Warranty of the system up to 7 years
- Ready to use operator module in the form of 20" container with conditioning system and operator's workstations
- Weather package from - 20 °C to +55 °C
- For large objects the system achieves 3 images: 320kV + 320kV + 7,5MeV
- Remote station for image analysis
- Uninterruptable power supply for the whole system
- Diesel generator
- Betatron-based system ensuring lower scanning dose in comparison with linac-based units.



## SINGLE VIEW SOLUTIONS

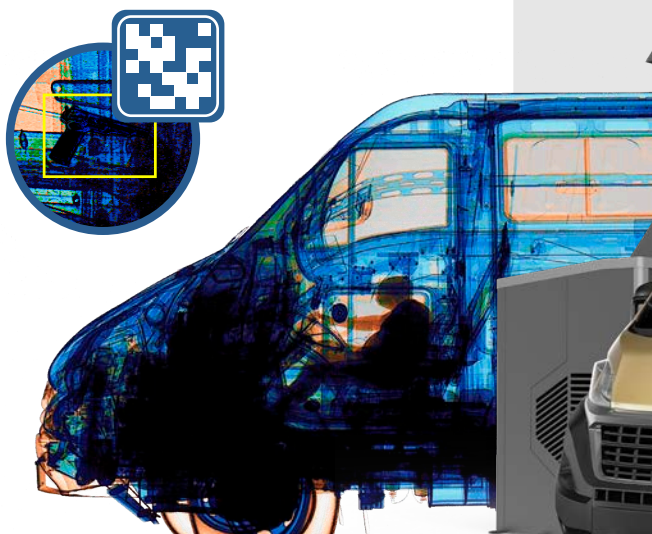
### DTP 200LV

ULTRA LOW DOSE PASSENGER  
VEHICLE X-RAY INSPECTION  
SYSTEM



### DTP 320LV

COST-EFFECTIVE SOLUTION  
FOR LIGHT VEHICLES



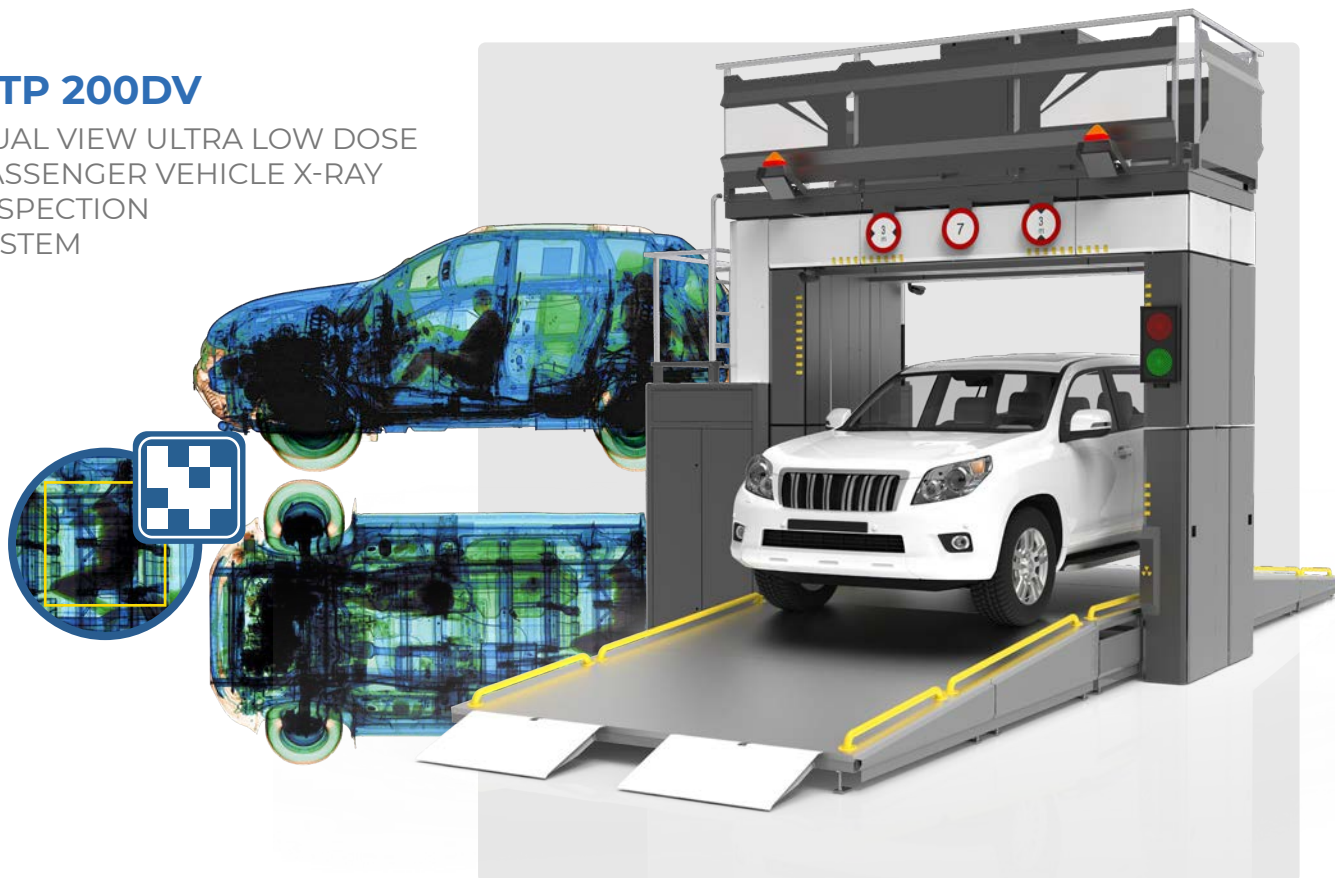




## DUAL VIEW SOLUTIONS

### DTP 200DV

DUAL VIEW ULTRA LOW DOSE  
PASSENGER VEHICLE X-RAY  
INSPECTION  
SYSTEM



### DTP 320DV

DUAL-VIEW DUAL-ENERGY  
SOLUTION





## SOLUTIONS FOR LARGE VEHICLES

### DTP 200LVB

LARGE PORTAL  
PASSENGER  
VEHICLE X-RAY  
INSPECTION  
SYSTEM



### DTP 320LVB

VEHICLE AND  
CARGO X-RAY  
INSPECTION  
SYSTEM



### DTP 320DVB

DUAL VIEW X-RAY INSPECTION  
SYSTEM FOR CARS, TRUCKS  
AND COACHES







## LARGE VEHICLE AND CARGO INSPECTION

### DTP 7500LV

COST-EFFECTIVE DUAL  
ENERGY SOLUTION



US Patent: US 8.295.433 B2

### DTP 7500LVR

AUTONOMOUS EASILY  
RELOCATABLE CONTAINER-  
MOUNTED X-RAY  
INSPECTION  
SYSTEM





## MOBILE LARGE PORTAL INSPECTION SOLUTION

### DTP 6000LVM/LVMT

MOBILE LARGE PORTAL  
VEHICLE AND CARGO INSPECTION  
SYSTEMS



## RELOCATABLE INSPECTION SOLUTION

### DTP 200R

HIGHLY RELOCATABLE SOLUTION  
FOR OCCUPIED PASSENGER  
VEHICLE SCREENING



• A cutting-edge solution for high-throughput occupied passenger vehicle screening. This relocatable marvel ensures swift deployment with its innovative drive-through scanning technology, effortlessly transported via a container truck. Boasting a compact 20' sea container size, logistics become a breeze. Dual energy imaging, automatic color coding, and material discrimination

empower it to identify threats and contraband with precision. Its lateral projection and small footprint cater to space constraints, while the integrated operator's workplace ensures autonomous operation. Elevate security seamlessly—choose the DTP 200R for mobile, efficient, and thorough screening at speeds of up to 20 km/h.

US Patent: US 11.375.962 B2





## MULTI ENERGY PORTAL

### 7500/320M.E.

A UNIQUE MULTI-ENERGY TECHNOLOGY TO CREATE A FUSION OF 4 ENERGIES. CLASS LEADING IMAGE QUALITY TO HELP DETER SMUGGLING



## UNIVERSAL SOLUTION FOR SMALL, MEDIUM, LARGE VEHICLES AND CARGO

### DTP 7500/320DV

MULTI-VIEW/DUAL-ENERGY SOLUTION FOR INSPECTION OF CARS, TRUCKS, COACHES AND CARGO



- The state-of-the-art dual-view, dual-energy drive-through X-ray scanner with a portal-shaped detection system.
- Intended for the inspection of trucks with driver cabin, cars, coaches, loaded vehicles (with containers or general cargo).
- Designed to identify the cargo compliance of these vehicles by detecting the transportation of contraband,

illegal drugs, weapons and other dangerous objects.

- Can be used at seaports, traffic control points, customs, temporary storage warehouses and other places where 100% cargo inspection is necessary.
- The system can substitute two regular systems providing inspection for both light passenger and large cargo vehicles.

US Patent: US 10.1941.181 B2



## FULL-BODY FORENSIC RADIOGRAPHY SYSTEM

THE PERFECT SOLUTION FOR  
MORGUES, CORONERS AND  
FORENSIC CENTERS

- Using our FOBOS XR Body Scanner, you can obtain high-resolution images of bones, soft tissues and organs in less than 30 seconds. It's ideal for obtaining quality evidence that adheres to forensic guidelines.
- It is ideal for your medical, forensic and law enforcements which need to examine bodies up to 340 kg / 750 lbs. With a high penetration capability (Al – min. 12", by H<sub>2</sub>O – 32"), you can use this device for examination of road traffic accidents and suicide cases, as well as homicide, drowning or other difficult situations.

### FOBOS



US Patents: US 11.375.962 B2  
D555.43 S

## INLINE OR STANDALONE X-RAY INSPECTION FOR VARIOUS APPLICATIONS

PERSONAL PROTECTIVE EQUIPMENT, PRISON  
MATTRESSES OR EVEN CAR DOOR PANELS INSPECTION

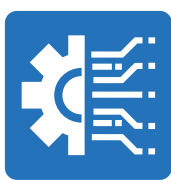
### FLOWD



- Welcome to the world of FLOWD – the cutting-edge series of Non-Destructive Testing (NDT) devices revolutionizing multiple industries. It is a versatile technology designed to provide precise

X-ray NDT inspection in various applications. With a singular device, we offer three distinct solutions, each tailored to meet specific needs.

US Patents: US 10.768.123 B2  
US 9.883.842 B2



## NEXT-LEVEL FISH INSPECTION SYSTEM

MEETING THE UNIQUE DEMANDS OF THE SEAFOOD INDUSTRY AND CUSTOMS AUTHORITIES

• Engineered to perfection, this state-of-the-art system ensures comprehensive scrutiny of fresh, cooling, and frozen fish, whether in transport boxes or as standalone specimens. With a generously sized tunnel catering to fish measuring up to 5m x 1.5m x 1.5m, FISHXRAY provides an expansive solution for all your inspection needs. The system goes beyond conventional standards, incorporating an advanced three-colour palette and infinite-colour recognition for enhanced detection of suspicious objects and contraband. Seamlessly quick start-ups and an assurance of compliance make FISHXRAY the go-to choice for a safer and more efficient fish inspection process.

**FISHXRAY**



## UNIQUE X-RAY SORTING SOLUTION

PORTABLE WASTE BATTERIES AND ACCUMULATORS TESTING, CLASSIFICATION AND SORTING

• BATTERAY, a revolutionary X-ray battery sorting system has redefined waste battery identification since 2018. With unparalleled technology, it accurately classifies types, unaffected by labels or counterfeits. Boasting a conveyor speed of 350-400 kg/h, its modular design adapts to various batteries. Sorting Alkaline/ZnC with 99.5% purity. The system covers Zn-Carbon, Alkaline, Li-Ion, Li-Primary, NiCd, and NiMH. Patented and AI-powered, BATTERAY is the epitome of efficiency, offering a transformative solution for waste battery management.

**BATTERAY**



US Patent: US 11.660.642 B1



LINEV SYSTEMS UK

[www.linevsystems.uk](http://www.linevsystems.uk)  
[ukinfo@linevsystems.com](mailto:ukinfo@linevsystems.com)

## NEXT-GEN SECURITY X-RAY SCREENING SYSTEMS

At LINEV Systems®, we take pride in being more than just a company that sells innovative, industry leading X-ray solutions. We believe in delivering a comprehensive package that includes exceptional customer service, reliable support, and expert product servicing. We will be with you every step of the way.

### **INSTALLATION TEAM:**

Our highly skilled installation team provides seamless and efficient installations. They possess extensive knowledge and expertise in our advanced X-ray technology, ensuring that they are set-up for your specific needs. Our installation team is committed to delivering a hassle-free experience, minimising any disruption to your operations.

### **CUSTOMER SERVICE AND SUPPORT:**

At LINEV Systems® customer satisfaction is our top priority. Our friendly and knowledgeable customer service team is always available to assist you with any enquiries you may have. We strive to provide prompt and personalised support, ensuring that your needs are met promptly and effectively. We understand that the need for support does not end after the purchase. Our dedicated support team is committed to providing you with ongoing assistance, troubleshooting, and guidance throughout the lifespan of your X-ray product. Whether you require technical support or operational advice, our experts are just a phone call or email away, ready to provide the support you need. We value your feedback and continuously work towards exceeding your expectations.

### **PRODUCT SERVICING:**

We know that maintaining the peak performance of your X-ray solution is crucial, so our skilled technicians specialise in product servicing, offering regular maintenance, calibration, and upgrades to make sure your scanner operates flawlessly and ensure longevity.

### **ENGINEERS:**

Our team of experienced engineers is at the forefront of innovation and technology. They continuously push the boundaries to enhance the capabilities and performance of our X-ray scanners. We invest in their professional development to ensure they are equipped with the latest knowledge and skills, enabling them to provide you with unparalleled expertise and solutions.



Find out more about our  
patents and trademarks from  
[www.linevpatents.com](http://www.linevpatents.com)



Find out more about our  
radiation safety from  
[www.linevsystems.com](http://www.linevsystems.com)

# UNITED FOR INNOVATION



With continual development of our products LINEV Systems reserves the right to make changes to the design and specifications at any moment and without notice.

© LINEV Group. All rights reserved. The information in this document is proprietary to LINEV Group. It may not be used, reproduced, disclosed, or exported without the written approval.