



0100 2345
2345 0100
0100 2345
2345 0100

0100 2345
2345 0100
0100 2345
2345 0100

0100 2345
2345 0100
0100 2345
2345 0100



NEXT-GEN SECURITY X-RAY SCREENING SYSTEMS

linevsystems.uk



PEOPLE
SCREENING



PARCEL, BAGGAGE &
SMALL CARGO INSPECTION



CARGO &
VEHICLE INSPECTION



CUSTOMISED
SOLUTIONS

About us

Welcome to LINEV® Systems, your trusted partner for cutting-edge X-ray technology solutions. With over 30 years of experience, LINEV® Systems has evolved into a global ecosystem of businesses operating under the LINEV® Group umbrella brand.

“

TO EXCEED CUSTOMER EXPECTATIONS AND TO STAY AHEAD OF THE COMPETITION, WITH A FOCUS OF DRIVING FORWARD FOR SCIENTIFIC TRUTH

”

ADVANTAGES FOR OUR CUSTOMERS

At LINEV® Systems, customers receive personalised attention to their specific needs. Our products are not one-size-fits-all; they are tailored for regional requirements, reflecting our commitment to understanding and meeting the challenges of diverse markets.

INNOVATION AT THE CORE

As part of the LINEV® Group, LINEV® Systems is at the forefront of innovation. The Group organises regional sales efforts and drives research and development for new, innovative solutions that cater to both global and regional needs.

WHO WE ARE

LINEV® Systems is not just a company; it's a brand synonymous with world-class innovation in the Security, Analytical, Forensics, and NDT markets.

Our commitment to delivering high-quality products and solutions is backed by a global network of development, ensuring result-driven performance and unparalleled reliability.

GLOBAL PRESENCE

We operate regional offices worldwide for production, sales, and service support. This strategic presence allows us to tailor our solutions to meet the unique requirements of each region, providing our customers with focused attention and products configured to achieve optimal results within specific country guidelines.

OUR VISION FOR THE FUTURE

In a dynamic and unstable world, LINEV® Systems is dedicated to advancing technologies that improve health, safety, and overall well-being. We envision a smart society where the highest quality of life is achieved through scientific truth.

CUSTOMER FOCUS

Our customer-focused approach, combined with fast and flexible research and development, allows us to exceed customer expectations continually.

We are united under the LINEV® Group umbrella, working towards a common goal of innovation and service excellence. Join us in shaping the future of X-ray technology – choose LINEV® Systems for industry-leading solutions that set new standards and deliver exceptional results worldwide.



THREATS AND SOLUTIONS

Combining innovative threat detection technologies with flexible system designs, LINEV® Systems security inspection systems provide exceptional automated processing, threat recognition and throughput rates.

PEOPLE SCREENING

Every day millions of people all over the world pass through security checkpoints, hoping to do so as quickly and conveniently as possible. To provide them maximum security alongside with the required comfort, LINEV® Systems invented innovative all-encompassing transmission X-ray technology and implemented it into the most contemporary people screening systems on the market.

They allow the detection of all types of dangerous threats, including drugs, weapons, and explosives concealed on the human body, inside it or even hidden in the prosthetic devices much more effective and efficient in comparison with the ordinary metal detectors of competitive systems. Superior detection levels are an important feature recognised by every LINEV® Systems customer.

PARCEL, BAGGAGE AND SMALL CARGO INSPECTION

Modern threats in hold baggage, parcels and small cargo pushed LINEV® Systems to develop systems that are specifically designed to meet the main inspection requirements of customs, logistic centres, postal services or every facility critical to security like schools or embassies.

Baggage inspection series possess such technologies as Dual-Energy, allowing dangerous objects to be detected by atomic number. Dual View, providing the best detection abilities and AI automatic threat detection software, allowing operators to maximise their effectiveness and lower company maintenance costs.

CARGO AND VEHICLE INSPECTION

Threat levels in today's modern world from smugglers, criminals and even terrorists, create ever evolving challenges when it comes to security screening without hindrance to the flow of the process. LINEV® Systems portal systems are able to detect various types of hidden threats and prove to be an optimal solution for the inspection of trucks, passenger vehicles and cargo.

DTP series is the perfect fit for all types of high security locations like border crossings, government buildings, embassies or military facilities. Excellent detection ability and image quality position LINEV® Systems as one of the leaders on the market.



SECURITY X-RAY SCREENING SYSTEMS



JAILS AND PRISONS



SECURITY CHECKPOINTS



BORDER CROSSINGS



MILITARY FACILITIES



CRITICAL INFRASTRUCTURE



AIRPORTS



MINES



VIP RESIDENCES



PUBLIC EVENTS
AND VENUES

Full body security screening systems

CLEARPASS

REVOLUTIONARY HIGH THROUGHPUT BODY SCANNER

- Class leading Image quality
- A-EYE & DruGuard detection software
- Minimum safe operating area
- Wheelchair friendly and ADA compliant

Industry's fastest image acquisition time of 3 seconds

US Patent: US 11.762.123 B2



CLEARPASS C.I.

PARTIAL BODY SCANNER

CLEARPASS C.I. is the world's most advanced, mobile, single module body scanner, specially designed for the detection of contraband "on" or "in" the human body, by allowing selective area focused screening, which reduces screening and overexposure to other parts of the body.

Industry's fastest image acquisition time of 3 seconds

Full body security screening systems

COMPASS SMART DV

DUAL VIEW BODY SCANNER

- Best image quality on the market
- Easy relocatable modular design
- Single or Dual View solutions for the best threat detection
- Unique software features

US Patents: US 10.473.811 BIUS 9.595.016 B2



COMPASS SMART TR

FOCUSED VIEW BODY SCANNER

Advanced security solution with enhanced detection capabilities for fast, safe and precise screening for items on or in the body within the central area - the most important screening zone for swallowed threats.

Considering that walk-through metal detectors cannot cope with all the latest security threats, the innovative personal security systems invented by LINEV Systems® are the best and the most effective solution for safety protection. Today when terrorists use more and more sophisticated techniques and means, such as non-metallic weapons, plastic and liquid explosives, and when drug dealers use human bodies as containers for drug transportation, the security systems must be enhanced by the latest technologies and solutions.

- Innovative imaging technology for personal inspection using an extremely low dose of X-ray transmission (comparable to 2 minutes flight in an airplane).
- Identification of a wide range of dangerous items that can be hidden in body cavities or concealed under clothing.
- High speed scanning improving and simplifying the checkpoint inspection process with no harmful effect on health.

X-RAY SHIELDING CABIN

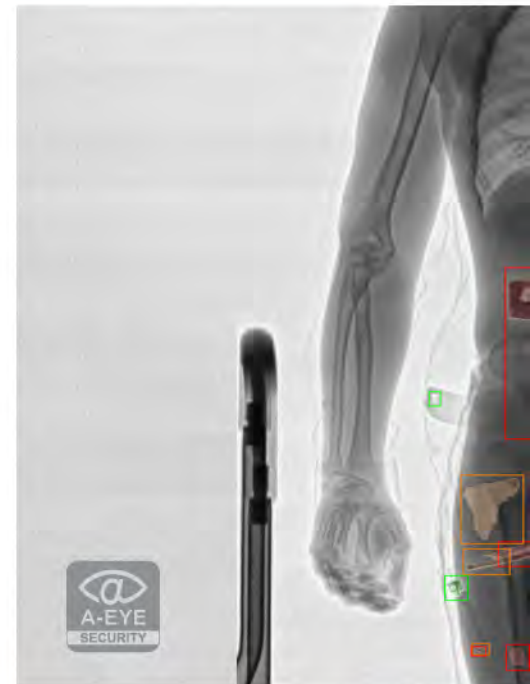
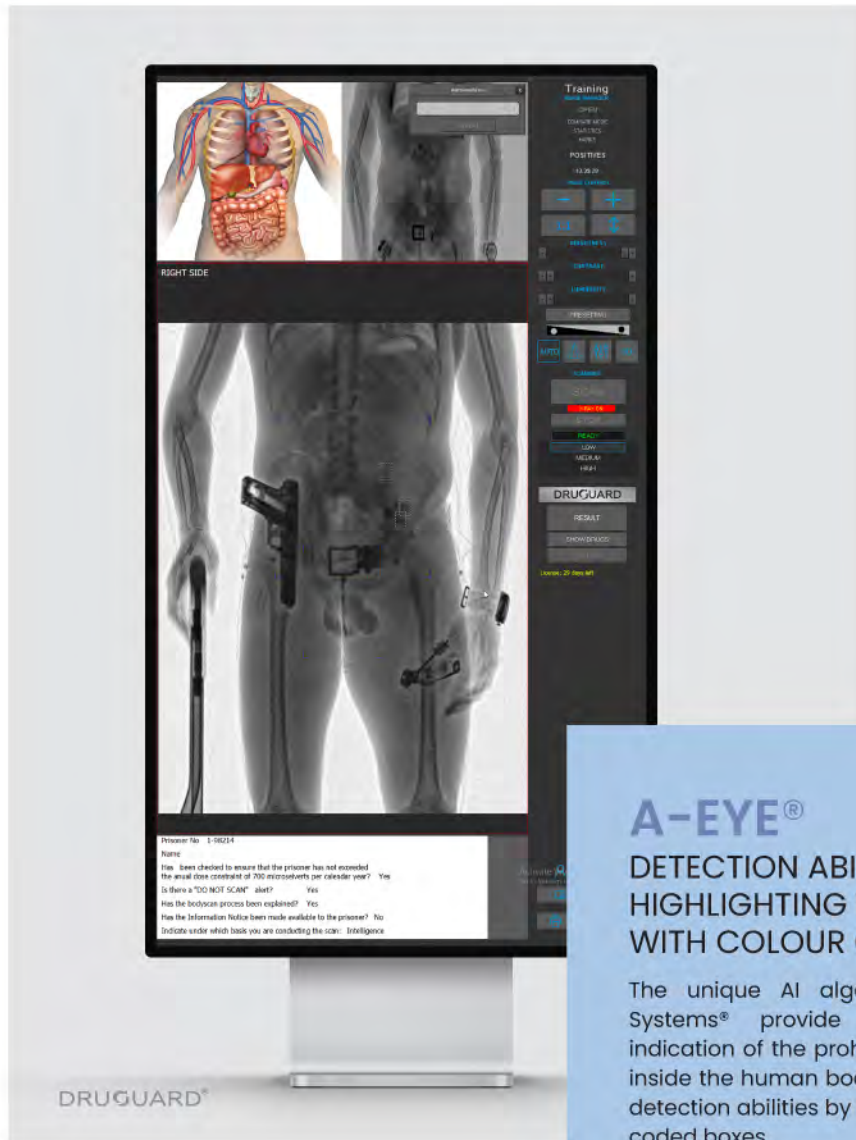
SPACE-LIMITED ENVIRONMENT SOLUTION

A compact solution designed for crowded spaces, ensuring superior X-ray safety. Doors, protective glass, and door interlocks for optimised radiation protection. Revolutionize secure scanning in confined areas without compromising operational flexibility.

US Patent: US 10.674.972 B1



Unique software features



A-EYE®



DETECTION ABILITIES BY HIGHLIGHTING THREATS WITH COLOUR CODED BOXES

The unique AI algorithms developed by LINEV Systems® provide automatic detection and indication of the prohibited items and threats on or inside the human body and enhance the operator's detection abilities by highlighting threats with colour coded boxes.

DRUGGUARD®

DRUGGUARD analyses the body scanner X-ray images and highlights suspected objects in the central area which is mostly commonly used to conceal drugs by a trafficker or "drug mule". This enhances the detection capability for the operator and increases the throughput of the screening process. Currently deployed at airports and border crossings, it has already proven to be a valuable tool to assist customs and law enforcement personnel in drug interdiction efforts.

FEATURES:

- Effective detection of concealed narcotics
- Reduced image analysis time
- Remote retrofit upgrade
- Storage of all images with highlighted zones
- Low false alarm rate
- Track and boost operator effectiveness

US Patents: US 7.397.892 B2US 9.392.983 B2



S.E.E.

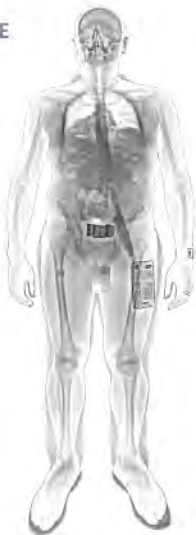
SUPER EDGE ENHANCEMENT

This cutting-edge image enhancement tool uses sophisticated algorithms to provide optimized clarity and contrast of threats and contraband on or within the human body. S.E.E. processes each image to provide the operator with a highly effective super resolution image which is tailored according to individual scanned.

Standard view



S.E.E



INTEGRATION

UNIQUE SOFTWARE

The software provides full and effective integration of the inspection systems into any security infrastructure with the possibility to connect to any of the common option enhancements including document scanners, CCTV, fingerprint scanners, barcode readers, etc.

COMPASS DMS is a set of applications used to run X-ray people screening systems. The system allows operators to inspect people and view their accounts, perform data security screening, and view the obtained X-ray images.



REMOTE OPERATION

COMPASS DMS can unite X-ray scanners from separate locations into one network keeping track of the total X-ray exposure dose for each inspected person, even when the person undergoes a security screening process in different locations

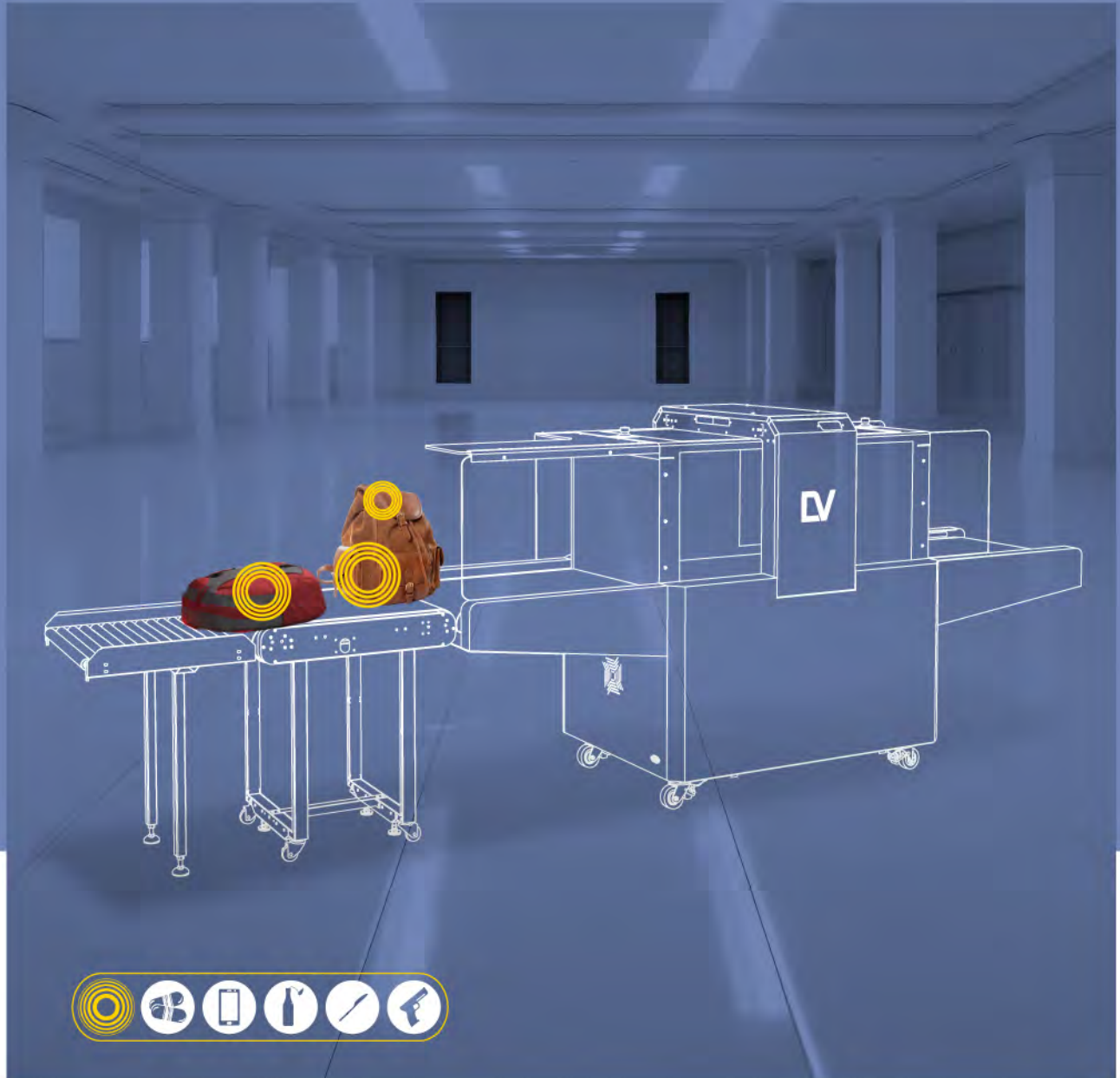
DATA SYNC

COMPASS DMS synchronises the information: inspected people's profiles, scan records, and X-ray images between all connected devices.

SECURITY

COMPASS DMS can be installed on the main server, an automated workstation (AWS) or a mobile device like a tablet.

The DMS manages the data and ensures data safety. All COMPASS data, stored on Operator's AWS, Server or transferred via network is subject to protection.



BAGGAGE SCREENING



JAILS AND PRISONS



SECURITY CHECKPOINTS



BORDER CROSSINGS



MILITARY FACILITIES



CRITICAL INFRASTRUCTURE



AIRPORTS



MINES



VIP RESIDENCES



PUBLIC EVENTS
AND VENUES

CUTTING-EDGE ARTIFICIAL INTELLIGENCE FOR X-RAY THREAT DETECTION

A-EYE®

FEATURES:

- Automated detection of a wide range of threats
- High detection probability
- Low false alarm rate
- Developed using real threat objects (AI Algorithm based and tested on DSA Detection Threat Library)
- Supports inexperienced operators
- High speed automated security checkpoint screening

BENEFITS

OPERATIONAL COSTS OPTIMISATION

- Increases Operator's efficiency and detection probability
- Streamlined process provides better personal experience
- Minimises Operator's errors through adding an "extra pair of eyes" for X-ray image interpretation

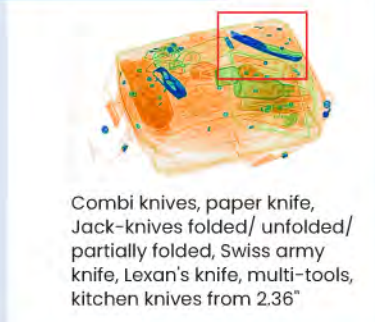
LINEV Systems® proprietary software A-EYE is an Artificial Intelligence system intended for the automated identification of firearms, firearms components, ammunition, knives and Pyrotechnics. The detection algorithm is an embedded part of the BV product line software.

The algorithm is built using real threat objects that could be expected at events and locations such as theme parks, concerts, sporting events, schools, or other venues which may require security checkpoints. The A-EYE algorithm considers diverse visual backgrounds in baggage consisting of variously dense packed items in any bag type.

The A-EYE algorithm increases threat detection capabilities for operators with any level of experience. Threats are visually highlighted on the screen by coloured boxes with category identification.

Optionally, the software allows the system to automatically stop the conveyor when a threat is detected.

KNIVES



HANDGUNS



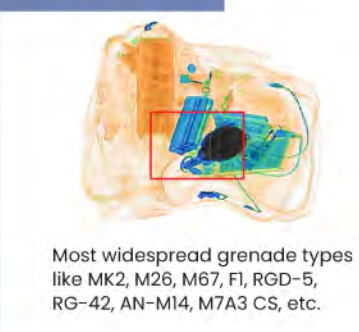
AMMUNITION



BRASS KNUCKLES



GRENADES



FLARES



Innovative solutions

THE FUTURE OF AUTOMATED, HIGH SPEED BAG INSPECTION

LV STREAM



It scans over 1400 bags per hour in dual-view, with no operator image review. AI analyzes each bag in real time, pausing only flagged items — no lines, no delays. From weapons and explosives to vapes and restricted items, threats are detected automatically. Each bag is linked to its owner, ensuring it's ready for pickup precisely when they arrive — even for visitors with limited mobility.

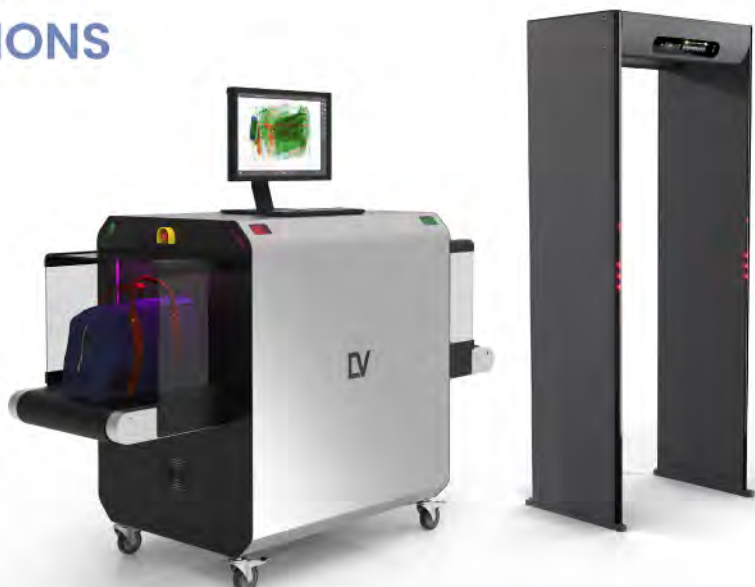
For even greater precision, the Spectral 3D Tomography based system delivers full-object reconstruction and advanced threat recognition — all in under one second per bag.

COMPLETE SECURITY CHECKPOINT SOLUTIONS

BV 5030 / BV 6045

FEATURES:

- Modular Architecture
- Multiple colours available
- Telemetry (predictive analytics)
- Artificial Intelligence software system for automated detection of firearms, knives and ammunition
- Automatic identification of suspicious objects (drugs, explosives)
- Availability of 7, 3 colour and infinite colour palettes of images
- The fault-tolerant configuration of the acquisition/analysis workstation
- Quick start and shutdown
- Real-time self-diagnostics



Can integrate with [Garrett Walk-through metal detector](#)
Also available from LINEV Systems

BV 6045DV



BV 6080



BV 7080DV



BV 100100TB



BV 100100DV



BV 160180 | BV 180180DV





MOBILE PEOPLE AND BAGGAGE SCREENING



JAILS AND PRISONS



SECURITY CHECKPOINTS



BORDER CROSSINGS



MILITARY FACILITIES



CRITICAL
INFRASTRUCTURE



MINES



VIP RESIDENCES



PUBLIC EVENTS
AND VENUES

BV 6080M



BV 100100M | BV 100100DVM



Mobile people and baggage screening

MOST COMMON MODELS USED



IVECO

FEATURES

- Bi-directional scanning
- Single view or dual view
- Large tunnel sizes
- Can be fitted to various types of security vans

OPTIONS

- Compatible with various vehicle models
- Registration software
- Passport reader
- CCTV
- Operator room climate control
- Hydraulic stabilisation system
- Folding awnings
- Radiation monitor



BV baggage X-ray scanner

COMPASS X-ray body scanner



Mobile people and baggage screening

MIP COMPASS

MOBILE PEOPLE SCREENING

- Security inspection point that comprises of a full body X-ray security system and operator workstation.
- Designed especially for its flexibility and is perfectly suited for use by law enforcement agencies and event security managers.
- Has an autonomous power supply (no infrastructure required).
- Operates well in any type of weather conditions.



COMPASS
X-ray body
scanner



US Patent: US 2016/0051211 A1



MIP BV

MOBILE BAGGAGE SCREENING

- An effective temporary checkpoint inspection solution for screening of personal belongings, hand luggage and small cargo.
- BV 6080M, BV 100100M and Dual View BV 100100DVM baggage systems are available for all MIP BV and MIP COMPASS BV van series.



MIP COMPASS BV

MOBILE PEOPLE AND BAGGAGE SCREENING

- A van based security inspection point that comprises of a full body X-ray security system, baggage scanner and operator's workstation. MIP COMPASS BV offers a sophisticated screening solution with a large tunnel size, providing fast, efficient and hassle free security screening anywhere where a van can go.
- Flexible design perfectly suited for use by law enforcement agencies and event security managers
- Operates well in any type of weather conditions and under a wide range of ambient temperature and humidity levels.



BV baggage X-ray scanner



COMPASS X-ray body scanner



MIP-T COMPASS

A TRAILER-BASED SOLUTION



COMPASS X-ray body scanner



VEHICLE AND CARGO INSPECTION



AIRPORTS



SEA PORTS



BORDER
CROSSINGS



MILITARY
FACILITIES




SECURITY
CHECKPOINTS



CRITICAL
INFRASTRUCTURE

DUAL ENERGY TECHNOLOGY

DUAL ENERGY imaging technology provides an automatic colour coding material discrimination feature, which enhances the distinguishing between organic, inorganic and metal materials by colours (as a real indication of low Z-medium, Z-high, Z). This feature helps the operator to detect dangerous object made from various materials.

	0-10	drugs, explosives, organics
	10-18	gemstones, explosives,
	20+	minerals metals, alloys
	0-7	drugs, alcohol
	7-10	explosives
	10-14	precious stones, glass
	14-18	bones, gypsum, salt
	18-22	copper sulphate
	22-35	brass, steel
	35 +	lead, quartz, gold, platinum



Weather packages from -30 °C to +55 °C



Automatic number plate recognition (ANPR)



Automatic container code recognition (ACCR)



Under vehicle surveillance system (UVSS)



Weight bridge



Uninterruptible power supply (UPS)



Module for operator



Infrared barriers



Photo capturing



Roadway gate



Remote workplace



Radiation monitor



Diesel generator

INSPECTION SYSTEMS

FEATURES

- **DRIVE-THROUGH TECHNOLOGY.**
While vehicle is passing through scanning tunnel, the driver's cab is automatically excluded from radiation.
- **MOBILITY.**
The DTP products can be easily relocated by a standard container truck and completely installed with the support of only 2-3 operators.
- **SMALL FOOTPRINT.**
The deployment of the DTP products requires a relatively small ground surface without the necessity of creating additional infrastructure.
- **HIGH THROUGHPUT.**
Due to drive-through (free-flow) operation mode, the DTP system can inspect up to 120 vehicles per hour.
- **HIGH PENETRATION.**
The DTP system provides high quality X-ray images of inspected objects, with a penetration up to 400 mm of steel at a speed of up to 10 km/h.

INTEGRATION

- Automatic number plate recognition system (ANPR)
- Under vehicle inspection system (UVIS)
- Integrated radiation portal monitor (IRPM)
- Several systems could be united into the one digital monitoring complex CargoDMS
- Systems could be integrated into any existing infrastructure

OPTIONS

- Throughput capacity up to 120 vehicles per hour
- High quality image with 7 colour-coding
- Warranty of the system up to 7 years
- Ready to use operator module in the form of 20" container with conditioning system and operator's workstations
- Weather package from - 20 °C to +55 °C
- For large objects the system achieves 3 images: 320kV + 320kV + 7,5MeV
- Remote station for image analysis
- Uninterruptable power supply for the whole system
- Diesel generator
- Betatron-based system ensuring lower scanning dose in comparison with linac-based units.

Passenger and small goods inspection

DTP 200LV

ULTRA LOW DOSE
PASSENGER VEHICLE X-RAY
INSPECTION SYSTEM



SINGLE VIEW SOLUTIONS



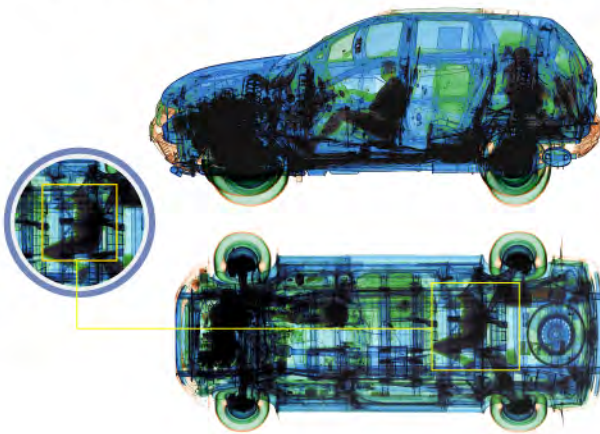
DTP 320LV

COST-EFFECTIVE SOLUTION
FOR LIGHT VEHICLES



DTP 200DV

DUAL VIEW ULTRA LOW DOSE
PASSENGER VEHICLE X-RAY
INSPECTION SYSTEM

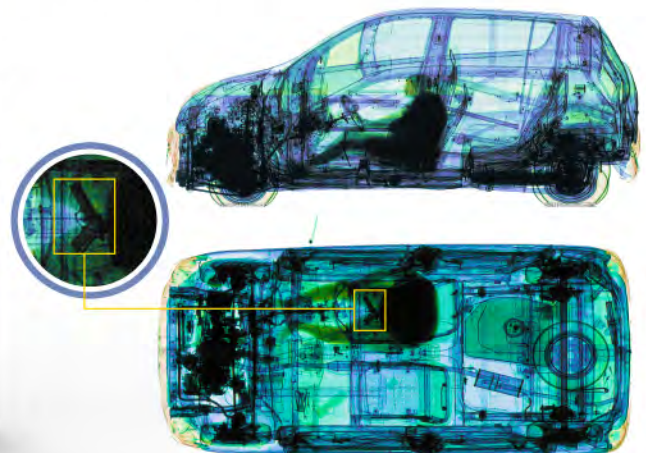


DUAL VIEW SOLUTIONS



DTP 320DV

DUAL-VIEW DUAL-ENERGY
SOLUTION



Multi size universal inspection

DTP 200LVB

LARGE PORTAL
PASSENGER VEHICLE
X-RAY INSPECTION
SYSTEM



DTP 320LVB

VEHICLE AND
CARGO X-RAY
INSPECTION
SYSTEM

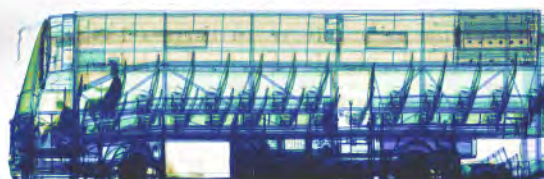
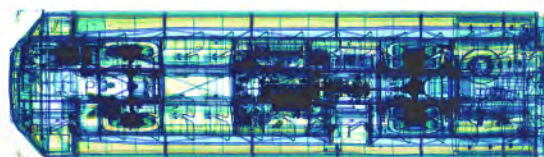


SOLUTIONS FOR BUSES



DTP 320DB

DUAL VIEW X-RAY INSPECTION
SYSTEM FOR CARS, TRUCKS AND
COACHES



Large vehicle and cargo inspection

DTP 7500LVR

AUTONOMOUS EASILY RELOCATABLE
CONTAINER-MOUNTED X-RAY
INSPECTION SYSTEM



SOLUTIONS FOR LARGE VEHICLES

DTP 7500LV

COST-EFFECTIVE DUAL ENERGY
SOLUTION



US Patent: US 8.295.433 B2

Multi size universal inspection

DTP 6000LVM/LVMT

MOBILE LARGE PORTAL
VEHICLE AND CARGO
INSPECTION SYSTEMS



MOBILE PORTAL



DTP 200R

HIGHLY RELOCATABLE SOLUTION
FOR OCCUPIED PASSENGER
VEHICLE SCREENING

A cutting-edge solution for high-throughput occupied passenger vehicle screening. This relocatable marvel ensures swift deployment with its innovative drive-through scanning technology, effortlessly transported via a container truck. Boasting a compact 20' sea container size, logistics become a breeze. Dual energy imaging, automatic color coding, and material discrimination empower it to identify threats and contraband with precision. Its lateral projection and small footprint cater to space constraints, while the integrated operator's workplace ensures autonomous operation. Elevate security seamlessly – choose the DTP 200R for mobile, efficient, and thorough screening at speeds of up to 20 km/h.

US Patent: US 11.375.962 B2.

AI-Driven Multi-Energy X-Ray Array Portal

MEAP

REVOLUTIONIZING SECURITY SCREENING WITH MULTI-ENERGY ARRAY (MEA) TECHNOLOGY, FEATURING DUAL-VIEW IMAGING, MODULAR ARCHITECTURE AND ADVANCED THREAT DETECTION

A next-generation dual-view, dual-energy cargo and vehicle inspection portal designed for high-throughput security operations. Ideal for screening trucks (with driver cabins), vans, containers, and general cargo—whether loaded or empty.

Replaces multiple legacy systems by combining deep penetration, multi-energy imaging and AI automation in one modular solution.

MEAP also can evolve into MEAP Spectral — the ultimate configuration with 3D spectral tomography for unmatched cargo insight.

 Spectral



Customized solutions **NDT**

FOBOS

FULL-BODY FORENSIC RADIOGRAPHY SYSTEM

The perfect solution for morgues, coroners and forensic centers

Using our FOBOS XR Body Scanner, you can obtain high-resolution images of bones, soft tissues and organs in less than 30 seconds. It's ideal for obtaining quality evidence that adheres to forensic guidelines.

It is ideal for your medical, forensic and law enforcements which need to examine bodies up to 340 kg / 750 lbs. With a high penetration capability (Al – min. 12", by H2O – 32"), you can use this device for examination of road traffic accidents and suicide cases, as well as homicide, drowning or other difficult situations.



US Patents: US 11.375.962 B2 D555.43 S

FLOWD

INLINE OR STANDALONE X-RAY INSPECTION FOR VARIOUS APPLICATIONS

Personal protective equipment, prison mattresses or even car door panels inspection.



Welcome to the world of FLOWD – the cutting-edge series of Non-Destructive Testing (NDT) devices revolutionizing multiple industries. It is a versatile technology designed to provide precise X-ray NDT inspection in various applications. With a singular device, we offer three distinct solutions, each tailored to meet specific needs.

US Patents: US 10.768.123 B2 US 9.883.842 B2

BATTERY ZETA

INTELLIGENT BATTERY SORTING BY TRUE CHEMISTRY

BATTERY™ ZETA series is the next-generation solution for precise battery sorting by internal composition. Designed for industrial recyclers, it enables the recovery of valuable resources by revealing the true chemistry inside every battery.



- Identifies lithium battery types by internal chemistry, not appearance or labeling
- Classifies NMC, LFP, LCO, and NCA
- Operates with damaged, unmarked or hybrid cells
- Increases black mass value by generating high-purity lithium fractions

MULTI-SENSOR CLASSIFICATION SYSTEM COMBINING X-RAY, Z-ANALYSIS AND OPTICS



Built upon the trusted BATTERY base, it extends functionality with high-precision Ni-Cd / Ni-MH sorting and is ready for optional lithium classification.

This solution is ideal for recyclers transitioning from manual to automated sorting.

FISHXRAY

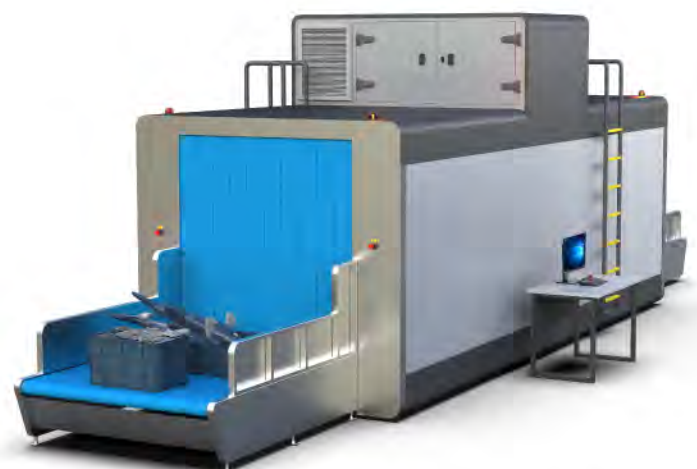
NEXT-LEVEL FISH INSPECTION SYSTEM

MEETING THE UNIQUE DEMANDS OF THE SEAFOOD INDUSTRY AND CUSTOMS AUTHORITIES

Engineered to perfection, this state-of-the-art system ensures comprehensive scrutiny of fresh, cooling, and frozen fish, whether in transport boxes or as standalone specimens.

With a generously sized tunnel catering to fish measuring up to 5m x 1.5m x 1.5m, FISHXRAY provides an expansive solution for all your inspection needs. The system goes beyond conventional standards, incorporating an advanced three-colour palette and infinite-colour recognition for enhanced detection of suspicious objects and contraband.

Seamlessly quick start-ups and an assurance of compliance make FISHXRAY the go-to choice for a safer and more efficient fish inspection process.





linevsystems.uk

+44 333 577 9813

Unit 1, Cross Channel Business Park,
Ramsgate, Kent CT12 4AU

ukinfo@linevsystems.com

© LINEV Systems. All rights reserved.
This document is marketing material for informational use only. Product design and specifications may change without notice. Refer to the official technical proposal for current and binding specifications.
Unauthorized use, reproduction, disclosure, or export is prohibited.



0852-SA11092025