

SCAN ME



**RMS**  
RELIABILITY MAINTENANCE SOLUTIONS



**Sensotek**

Smart Sensing Solutions



## Sensotek Kappa X™ Plant Maintenance System

Sensotek Kappa X™ provides innovative machine health monitoring for industrial applications. Kappa X combines a proprietary means of transmitting data with professional software and robust wireless hardware for condition monitoring analysis.



PUMPS



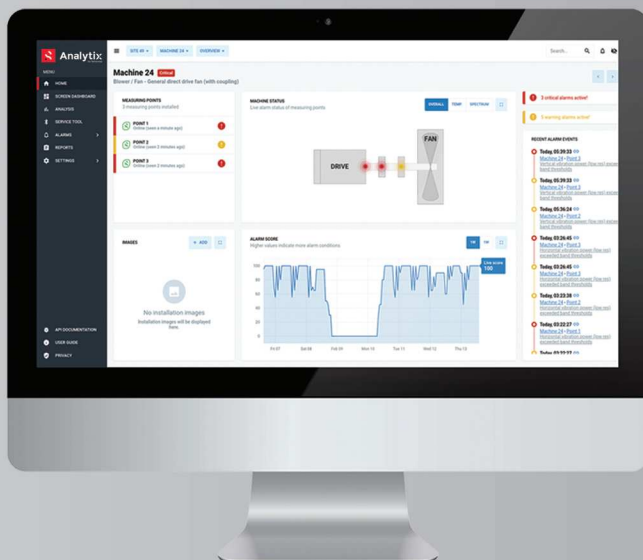
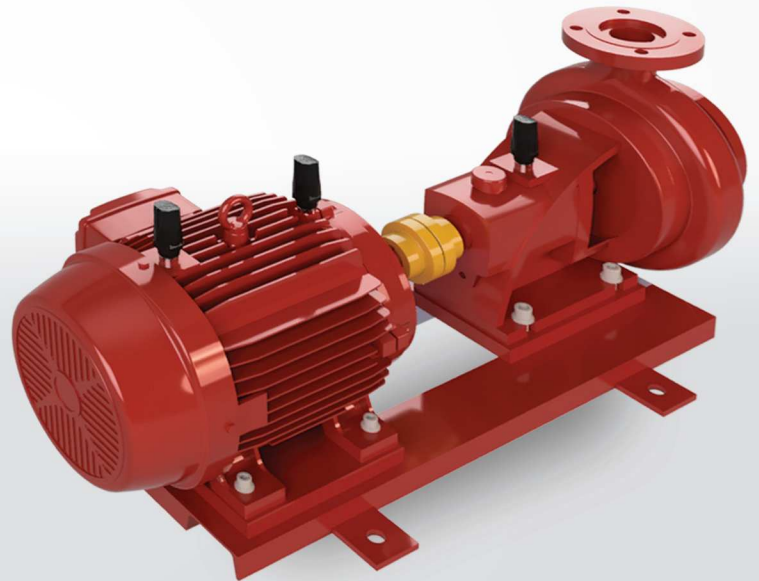
MOTORS



FANS

Sensotek Kappa X™ wireless sensors measure and transmit data every minute to ensure an accurate diagnosis can be performed on your machinery for predictive maintenance purposes. Condition monitoring reduces downtime, costs, and increases efficiency, extending your machines' life.

Kappa X is an evolution of wireless continuous health monitoring for a wide range of machinery. Built in partnership with vibration experts, Kappa X introduces a market leading 10kHz FMax, enabling earlier warning and increased diagnostic capability. Designed to monitor almost any application, Kappa X features a small footprint, waterproof housing, and a user-replaceable battery.



## Sensotek Analytix®

Sensotek Analytix® pioneers the user interface world when it comes to condition monitoring. Sleek design meets powerful analysis and reporting tools to give you one of the most advanced platforms available.

View high level data and an overall health rating. Delve deeper with full spectrum analysis, tracking harmonic peaks, bearing fault frequencies and side band amplitudes. Generate and share graphs at the click of a button.

With new features and updates added regularly, Analytix ensures you remain ahead of the game.

## Kappa X Wireless Sensor

Kappa X's comprehensive feature set exceeds all expectations of a wireless sensor:

**Smart Wake** technology enables the sensor to enter ultra-low power mode, preserving battery life

**Auto-Ranging** allows the sensor to automatically scale up to +/-64G to cope with peak energy exerted by the machine

**User configuration** adapts the system to suit all applications

With upgradable firmware and a replaceable battery, Kappa X features one of the best wireless sensor lifespans on the market.



## Kappa X Gateway

The Kappa X Gateway provides an uplink from the sensors in your plant to the Sensotek Analytix® cloud platform via Wi-Fi, ethernet or cellular connection. It also monitors ambient temperature to account for daily and seasonal fluctuations.

The Gateway receives data from the sensors, collates it into internet protocol and communicates this information for viewing and analysis.

Kappa X's proprietary sub 1GHz ISM band protocol relays data over long-range, high noise environments to accommodate large-scale industrial installations.

## Sensor Specifications

### Detects

- ▶ Bearing Failure
- ▶ Mechanical Looseness
- ▶ Imbalance
- ▶ Misalignment
- ▶ Shaft and Bearing Wear
- ▶ Electrical Noise and Resonance

### Key Measurements

RMS Velocity/Acceleration, Peak to Peak (Every minute/Configurable)  
Acceleration Time Waveform (Configurable time period)  
Spectrum (Acceleration, Velocity, Displacement)

### 10 kHz

Fmax (X, Y, Z)

### 64G

Vibration Limit (+/-)

### IP69K/ATEX

Environmental Protection

### 5 Years

Replaceable Battery

## Gateway Specifications

### Key Benefits

Proprietary RF Link Ensures Robust Data Connection  
Easy Install  
Small Form Factor

### Compatibility

Sensotek Kappa, Kappa X and Tau Sensors  
Sensotek Analytix Platform  
Sensotek Install App

### 250m

Wireless Range (Line of Sight)

### Wi-Fi, Ethernet

Connection to LAN

### IP64/ATEX

Environmental Protection (ATEX Zone 2)

### Cellular

Optional Connection