

# Benefits of Cloud Based Labelling



Jamie Tilley  
Cloud Printing Solutions Ltd  
T: 0161 818 6446  
W: [cloudprintingsolutionsltd.com](http://cloudprintingsolutionsltd.com)

The logo for Cloud Printing Solutions is located in the bottom right corner. It features a large blue cloud shape with the word "Cloud" in white and "Printing Solutions" in dark blue. Above this cloud are three smaller blue cloud shapes. The entire logo is set against a white circular background that is part of a larger graphic on the right side of the slide.

**Cloud**  
**Printing Solutions**

# About Cloud Printing Solutions



Cloud Printing Solutions Ltd

T: 0161 818 6446

W: [cloudprintingsolutionsltd.com](http://cloudprintingsolutionsltd.com)



## Industry Experience

- Long term experience and expertise in barcode and RFID product identification and supply chain labelling solutions
- Leading specialist in label management systems and printing solutions
- The Industries Leading Partner for Software NiceLabel Cloud

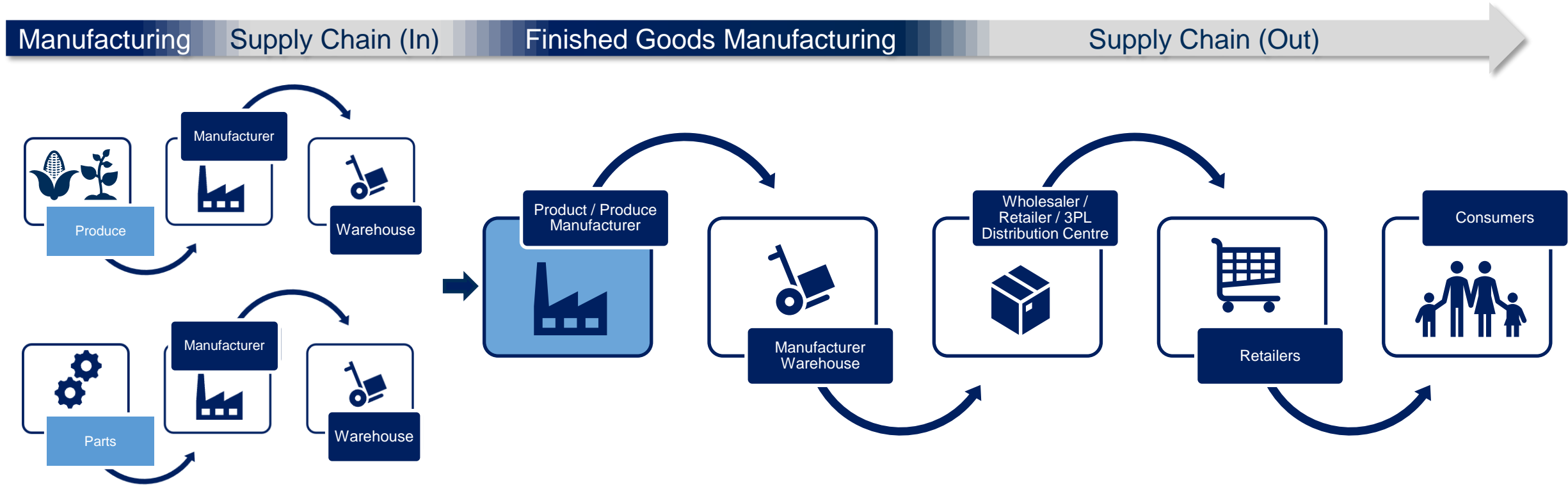
## High ROI

- We help businesses modernise legacy automatic identification and labelling systems with next generation label management and barcode quality control solutions that deliver high ROI's.

## Best Practice & Process Improvements

- Systems that provide best practice, process improvement and quality standards to ensure your business is ready for the future of quality controlled or regulatory labelling, such as GS1, FDA-UDI, EU-MDR, EU Food Regulations, GHS/CLP and more...

# The importance of manufacturing and supply chain printing solutions



**From raw material supplier to consumers. Primary, secondary and tertiary labelling, coding & marking play a key part in every step of in-bound and out-bound manufacturing and supply chain solutions.**

**Without quality-controlled label, coding, marking & document software, products are at risk of not being supplied resulting in lost or reduced incomes.**

# Why Cloud?

Cloud Printing Solutions Ltd  
T: 0161 818 6446  
W: [cloudprintingsolutionsltd.com](http://cloudprintingsolutionsltd.com)

The logo features the company name 'Cloud Printing Solutions' in white text on a blue cloud-shaped background. This cloud is positioned within a larger white circle that also contains three smaller blue clouds. The entire graphic is set against a solid blue background with a large white circle at the top.

**Cloud**  
**Printing Solutions**

## Software as a Service – SaaS (Operational cost – Opex)

**Subscription** model is now the normal way to acquire and manage software

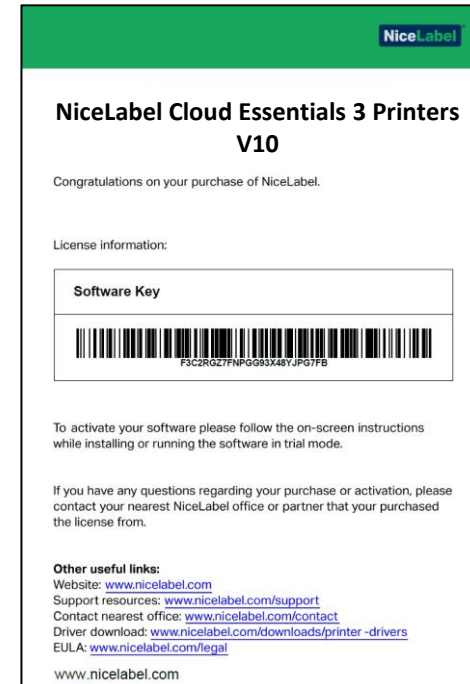
- **Office Productivity** programs such Office 365, Adobe etc...
- **Finance** programs such as Sage, Xero etc...
- **CRM** programs such as Salesforce etc...
- **Enterprise Labelling** programs such as Loftware etc...
- **ERP** programs such as Microsoft 365 Supply Chain, SAP etc...
- **WMS** programs such as Oracle Warehouse Management Cloud etc...



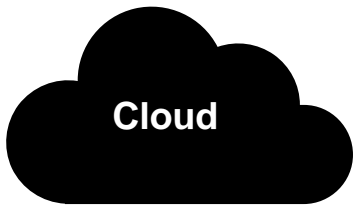


## Recognised as the standard for future system deployments

*“by **2026** Gartner predicts public cloud spending will exceed **45%** of all enterprise IT spending, up from less than **17%** in **2021**”*



*“by **2022**, **53%** of software licences will be from a subscription model (IDC)”*



# Cloud Technology Strategy

Key benefits recognised by Business and IT Leaders



Eliminates HW, SW and database infrastructure costs



Removes the need to install, monitor and manage



Speeds implementation, rollout and scale



Simplifies upgrades to new versions



Leverages advanced cloud technology



Reduces total cost of ownership

# What is cloud-based labelling?

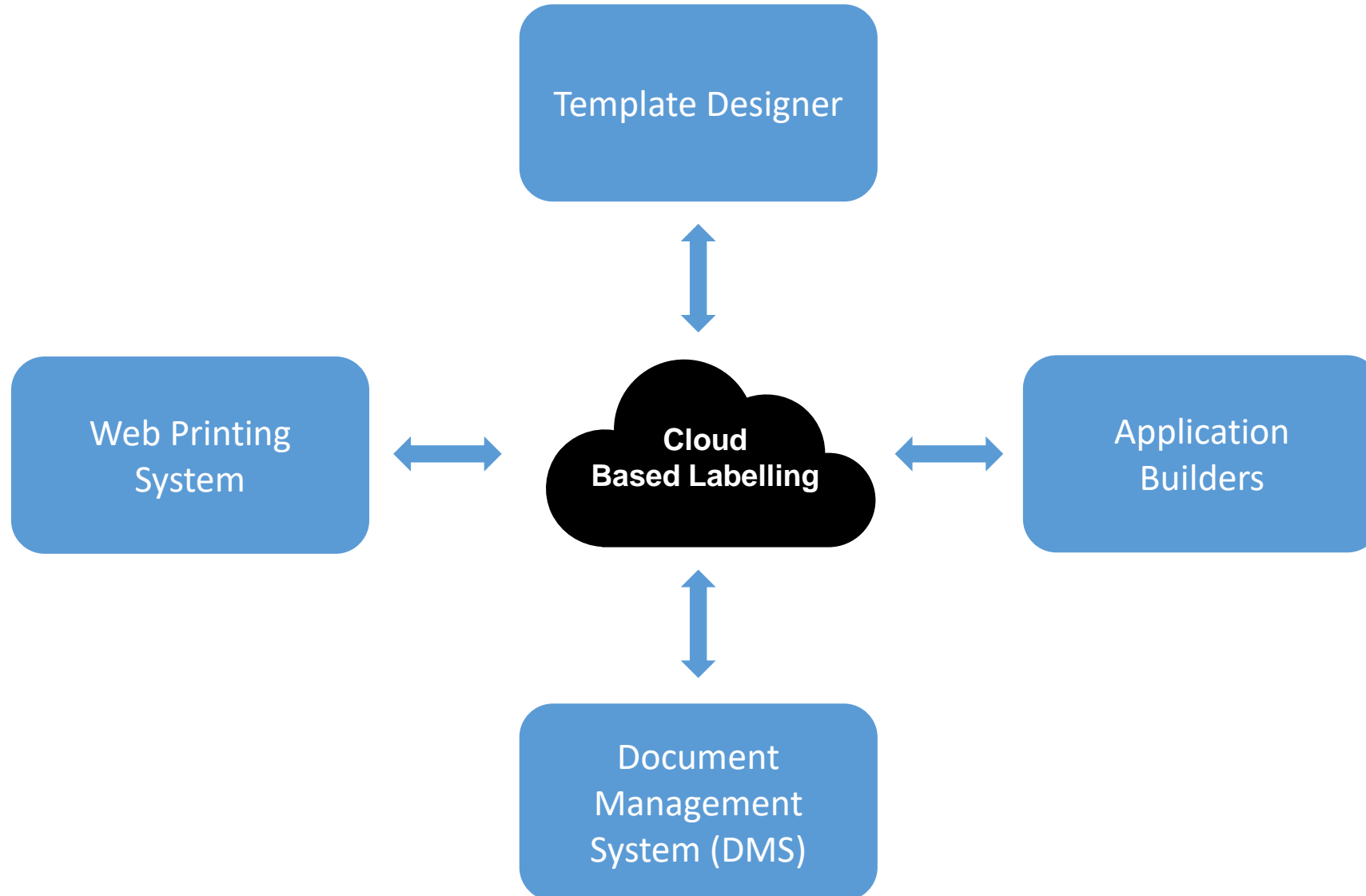
Cloud Printing Solutions Ltd  
T: 0161 818 6446  
W: [cloudprintingsolutionsltd.com](http://cloudprintingsolutionsltd.com)

The logo features the company name 'Cloud Printing Solutions' in white text on a blue cloud-shaped background. This cloud is part of a larger graphic in the bottom right corner of the slide, which includes three smaller blue clouds and is enclosed within a large, light-blue circular frame. The entire slide has a solid blue background with a large white circle in the top right corner.

**Cloud**  
**Printing Solutions**



## A best practice solution that supports all aspects of a Label Management System (LMS), hosted in the cloud



## Cloud Based Labelling

# Best practice software that supports all Users in any Location

### Administrators

- ✓ IT, System...
- Head Office
- Home Office
- Factory
- Warehouse

### Designers

- ✓ IT, Marketing, Regulatory Affairs, Print Room...
- Head Office
- Home Office
- Factory
- Warehouse

### Approvers

- ✓ IT, QA, Marketing, Regulatory Affairs, Customers...
- Head Office
- Home Office
- Customers

### Print Operators

- Factory
- Warehouse
- Store
- Customers / Partners / Suppliers

### Customers / Partners / Suppliers

- Design, Approve, Print in any location

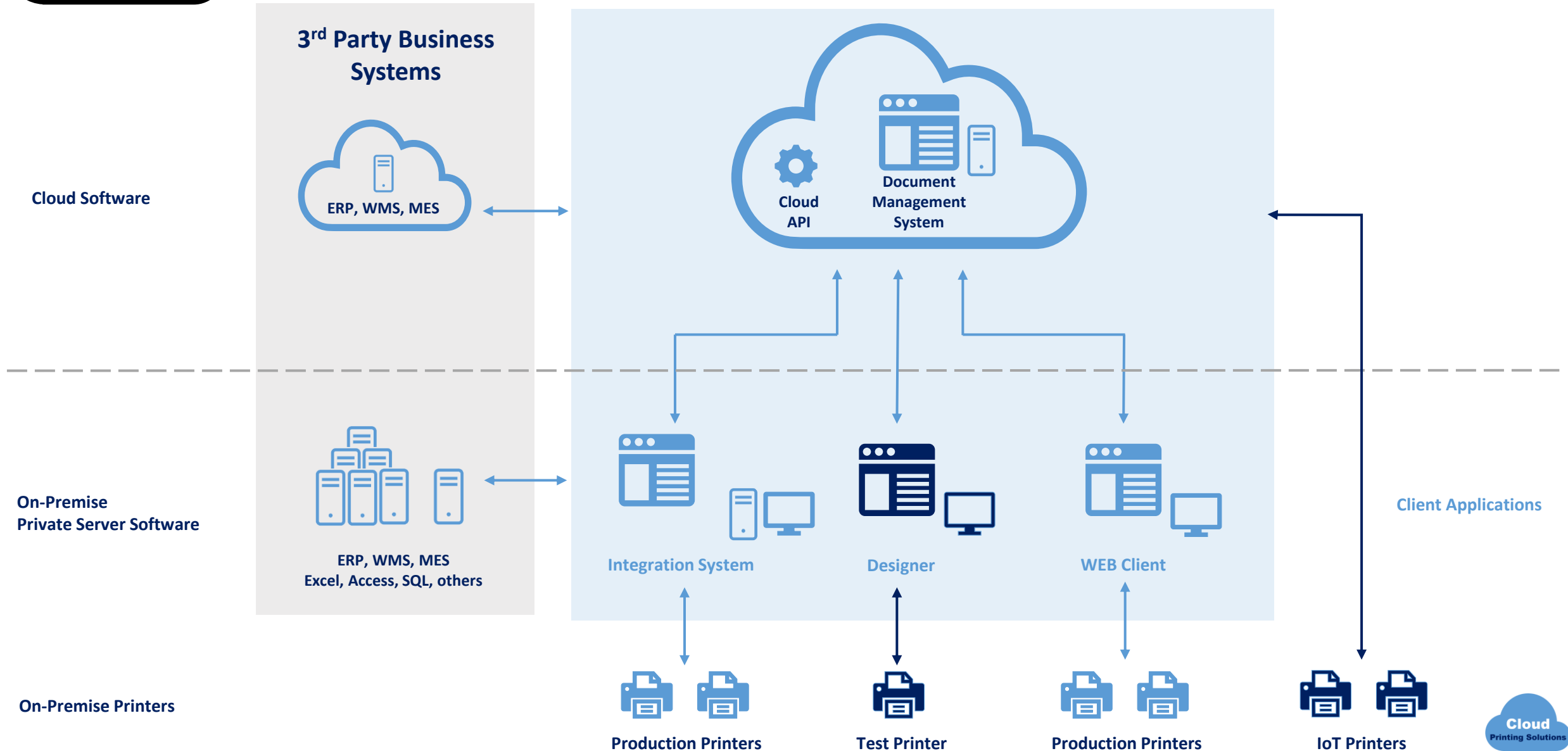
### Support: Software/Hardware Service Provider

- Design, Print, Support in any location



## Cloud Based Labelling

# Best practice software architecture that supports any size business or business system



# Cloud Based Labelling **Application** Strategy

Key benefits recognised by IT & Business Critical Application Leaders



Be up and running in minutes with minimal IT resources



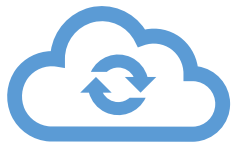
Simply design labels in an intuitive environment



Configure labeling applications that guide your users



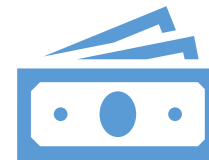
Integrate labeling with your business systems



Securely store and manage labels and data in the cloud



Easily scale printing across your business



Pay on subscription and lower your TCO



Benefit from partner services & support



# Software NiceLabel Cloud

Cloud-based Label Management System (LMS) for any size business

Cloud Printing Solutions Ltd  
T: 0161 818 6446  
W: [cloudprintingsolutionsltd.com](http://cloudprintingsolutionsltd.com)

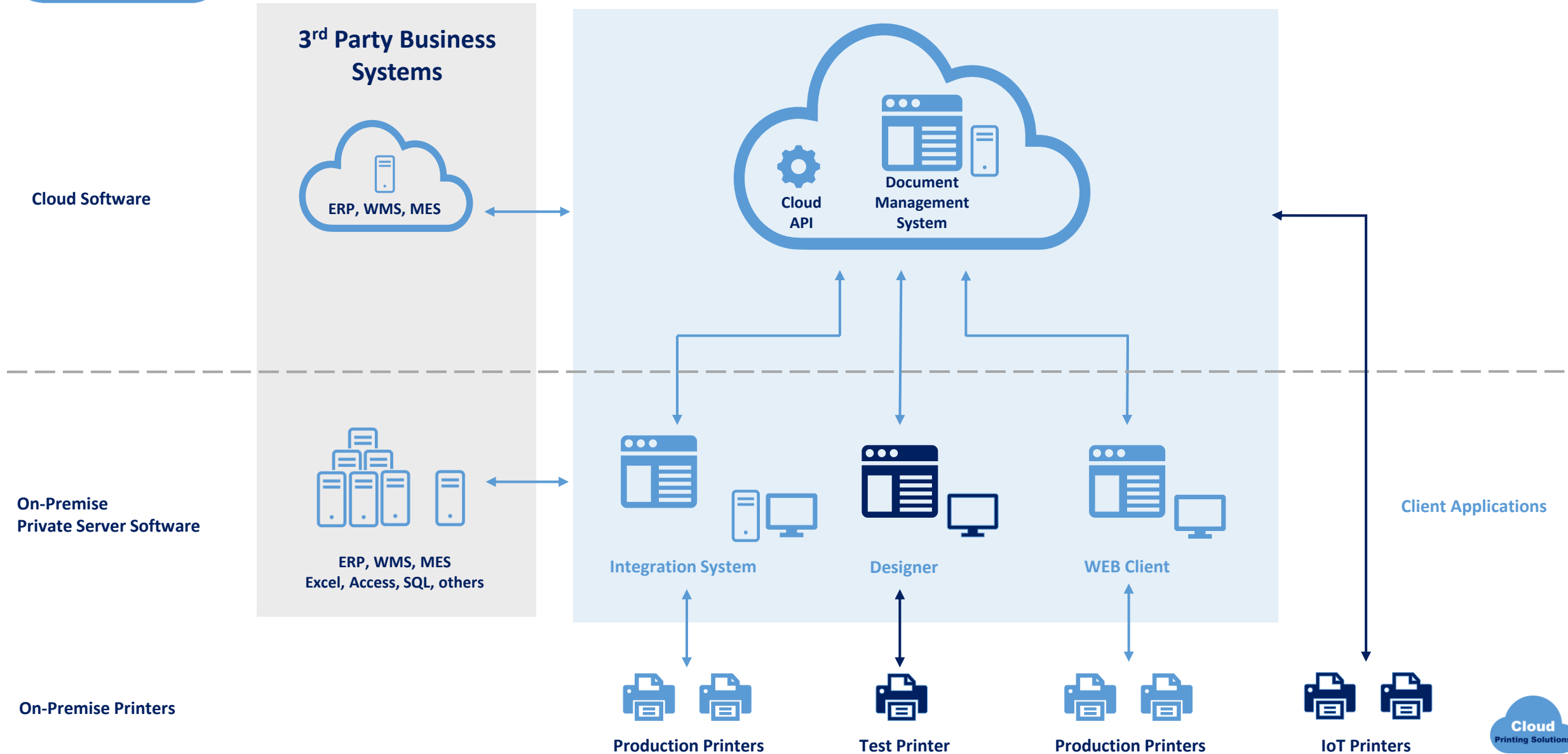
A large, stylized blue cloud icon containing the text 'Cloud Printing Solutions'. Above it are three smaller, similar blue cloud icons.

**Cloud**  
**Printing Solutions**



## The fastest way to digitally transform manufacturing and supply chain printing solutions

- Fully featured **Subscription Based Label Management System (LMS)**
- Public cloud leveraging Microsoft Azure infrastructure
- Office 365 like experience for labelling



# Supports all Users & Locations

## Administrators

- ✓ IT, System...
- Head Office
- Home Office
- Factory
- Warehouse

## Designers

- ✓ IT, Marketing, Regulatory Affairs, Print Room...
- Head Office
- Home Office
- Factory
- Warehouse

## Approvers

- ✓ IT, QA, Marketing, Regulatory Affairs, Customers...
- Head Office
- Home Office
- Customers

## Print Operators

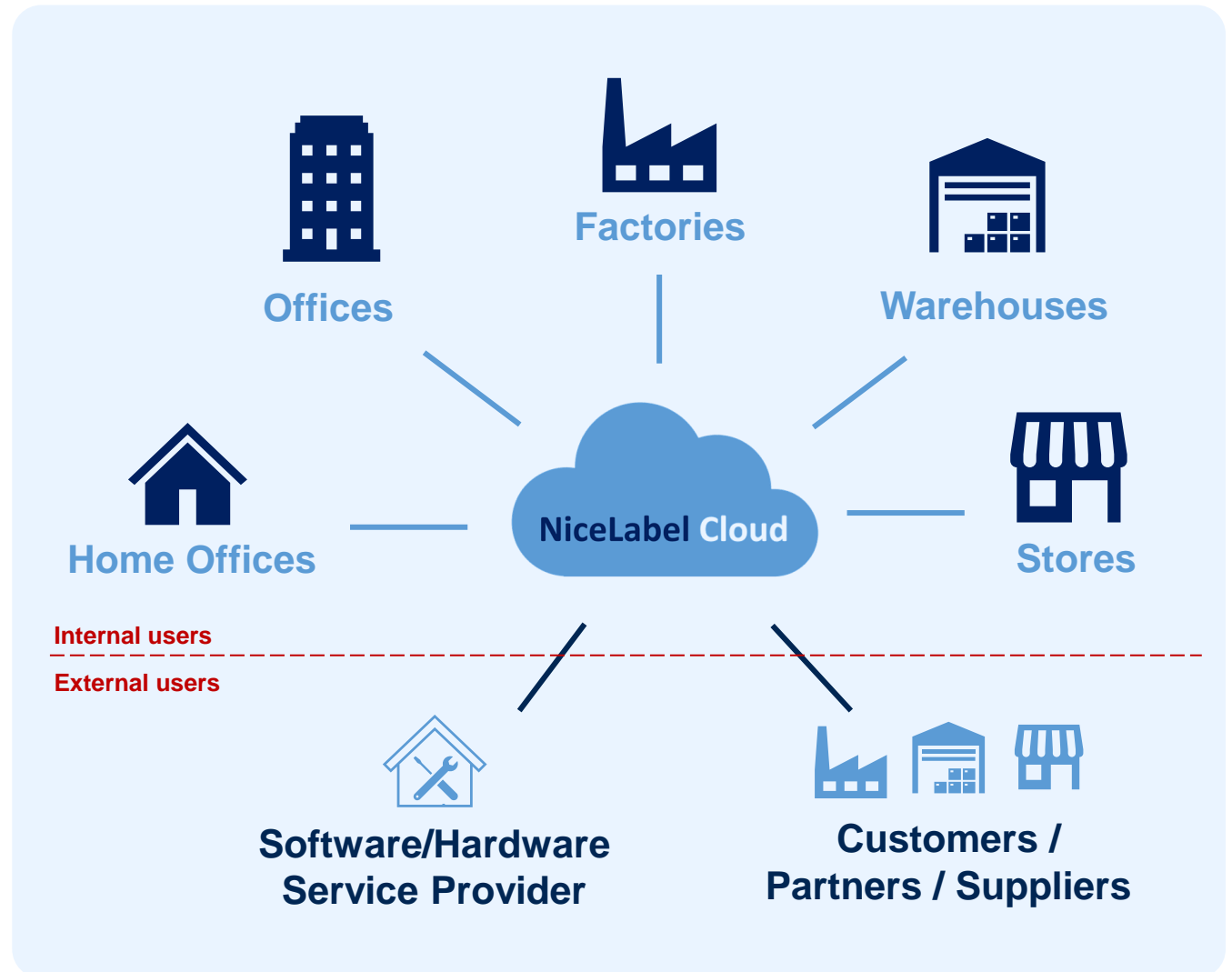
- Factory
- Warehouse
- Store
- Customers / Partners / Suppliers

## Customers / Partners / Suppliers

- Design, Approve, Print in any location

## Support: Software/Hardware Service Provider

- Design, Print, Support in any location





# Supports all Manufacturing & Supply Chain printing solutions



Application	Direct Marking / Printing	Label	Document
<b>Goods in</b>			
Product Identification		*	
Put away Labels		*	
<b>Picking</b>			
Works Orders			*
BOM / Pick Lists			*
<b>Production</b>			
Date Code	CIJ		
Product information	TTO	*	
<b>Assembly / Staging / Packing</b>			
Product Identification		*	
Repacking / Kitting Labels		*	
Work in Progress		*	*
Product/Promotion Sheets			*
Certificates			*
Packing Lists			*
Packaging / Carton Labels		*	
<b>Goods out / Dispatch</b>			
Delivery Notes			*
Invoices			*
Shipping/Address Labels		*	
Pallet Labels		*	

A blue cloud icon containing the text "NiceLabel Cloud" in white, set within a white circular background.

NiceLabel Cloud

# NiceLabel Cloud

Label Management System (LMS) Modules

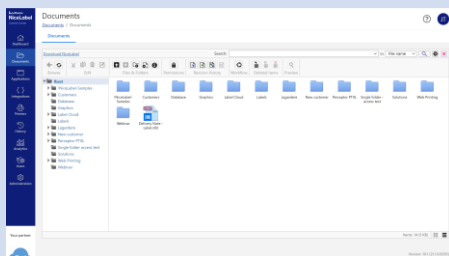
Cloud Printing Solutions Ltd  
T: 0161 818 6446  
W: [cloudprintingsolutionsltd.com](http://cloudprintingsolutionsltd.com)

A large white circular background containing three blue cloud icons of varying sizes. The largest cloud at the bottom contains the text "Cloud Printing Solutions" in white.

**Cloud**  
**Printing Solutions**

# Label Management System (LMS) Modules

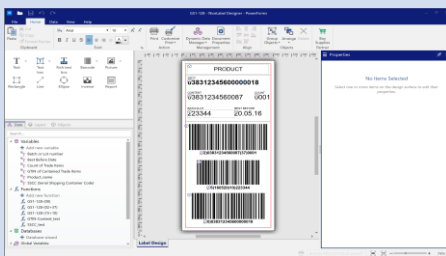
## Document Management System (DMS)



Manage and control users, templates, approvals, versions, printers, system history & analytics from any browser, anywhere

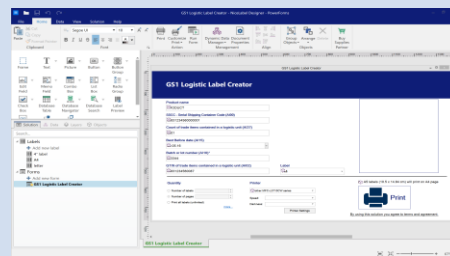
Comply with ISO9001, FDA CFR 21 Part 11 and other quality management systems

## Template Designer



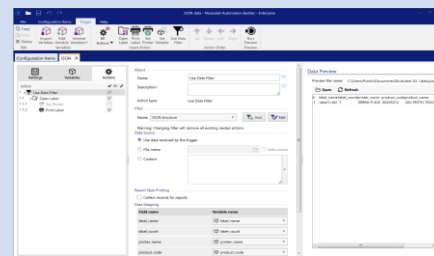
Design simple, complex or industry compliance templates for any type of manufacturing and supply chain printer or printing application.

## Manual-On Demand Printing Application Builder



Create custom printing and data management solutions to improve operator accuracy and efficiency

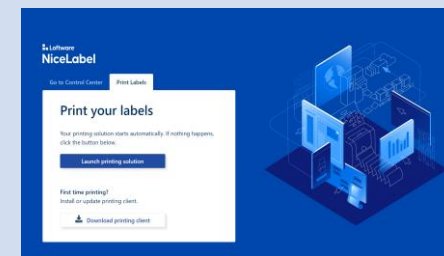
## Integration System Application Builder



Create automated printing and data management solutions

Integrate printing directly from ERP/MES/WMS and many other business critical systems

## Web Printing System



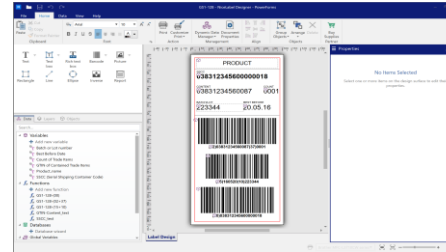
Deploy standard or custom printing and data management solutions via the web printing client in just a few clicks.

Extend printing solutions to customers, partners and suppliers

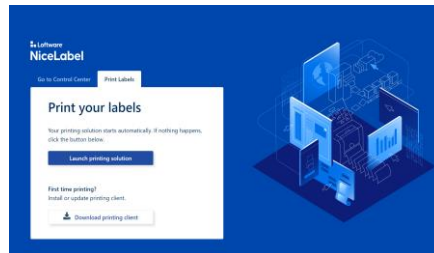


# Label Management System (LMS) workflow

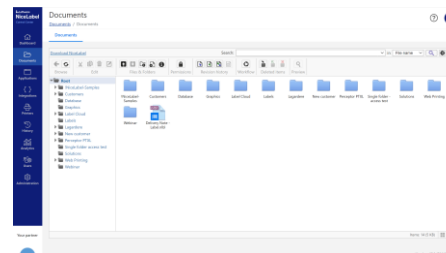
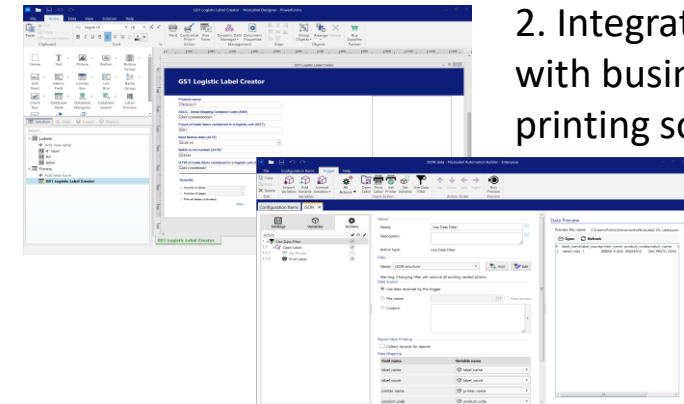
## 1. Design Templates



## 4. Print via cloud based solutions



## 2. Integrate templates with business data & printing solutions



## 3. Manage Templates & Printing Solutions

The logo consists of a blue cloud shape with the text "NiceLabel Cloud" in white, centered within the cloud. This cloud is positioned inside a larger white circle that has a light blue border.

NiceLabel Cloud

# NiceLabel Cloud

Typical Use case scenarios

Cloud Printing Solutions Ltd  
T: 0161 818 6446  
W: [cloudprintingsolutionsltd.com](http://cloudprintingsolutionsltd.com)

The logo features a large blue cloud shape with the text "Cloud" in white and "Printing Solutions" in dark blue, both centered within the cloud. Above this large cloud are three smaller blue cloud shapes. The entire graphic is set against a white background within a large white circle that has a light blue border.

**Cloud**  
**Printing Solutions**

# Typical single site, multi-user use case scenario for web printing

## On-Demand Manual Printing

### A single site business with multiple users

- Template designer
- IT Team
- Quality Manager
- Print Operators

uses NiceLabel Cloud at the Head Office or from any Remote location to centrally;

- Design, Manage and Deploy labels and printing solutions to multiple factory/warehouse print operators

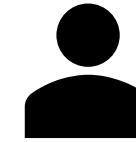
The screenshot displays the NiceLabel Cloud web interface. On the left, there's a 'Print' button and a 'Variables' section with a table of data. The main area shows a label design template with a header 'PRODUCT' and three barcode sections, each with a unique identifier.

Variable	Value
Product_Name	PRODUCT
SSCC (Global Shipping Container Code)	03831234560000018
Count of Trade Items	0001
Best Before Date	20.05.16
Batch or Lot Number	223344
GTIN A102	03831234560000018

The label design template includes the following text and barcodes:

- PRODUCT
- SSCC 03831234560000018
- CONTENT 03831234560087 COUNT 0001
- BATCHLOT 223344 BEST BEFORE 20.05.16
- Barcode 1: (02)03831234560087(37)0001
- Barcode 2: (15)160520(10)223344
- Barcode 3: (00)03831234560000018

Office / Factory / Home Based



IT Team



Designers



Quality/Regularity

NiceLabel Cloud



Factory / Warehouse Based  
Print Operators / Workstations

# Typical multi-site use case scenario for web printing

## On-Demand Manual Printing

### A national business with remote operations such as;

- Production Sites
- Distribution Centers
- Depots/Stores
- Remote Workers (Service/Maintenance Engineers etc....)
- Global Business Partners / Suppliers

### uses NiceLabel Cloud at the Head Office or from any Remote location to centrally;

- Design, Manage and Deploy labels and printing solutions to remote operators and business partners/suppliers



#### Head Office

- Responsible for design and deployment of centralised labelling solutions



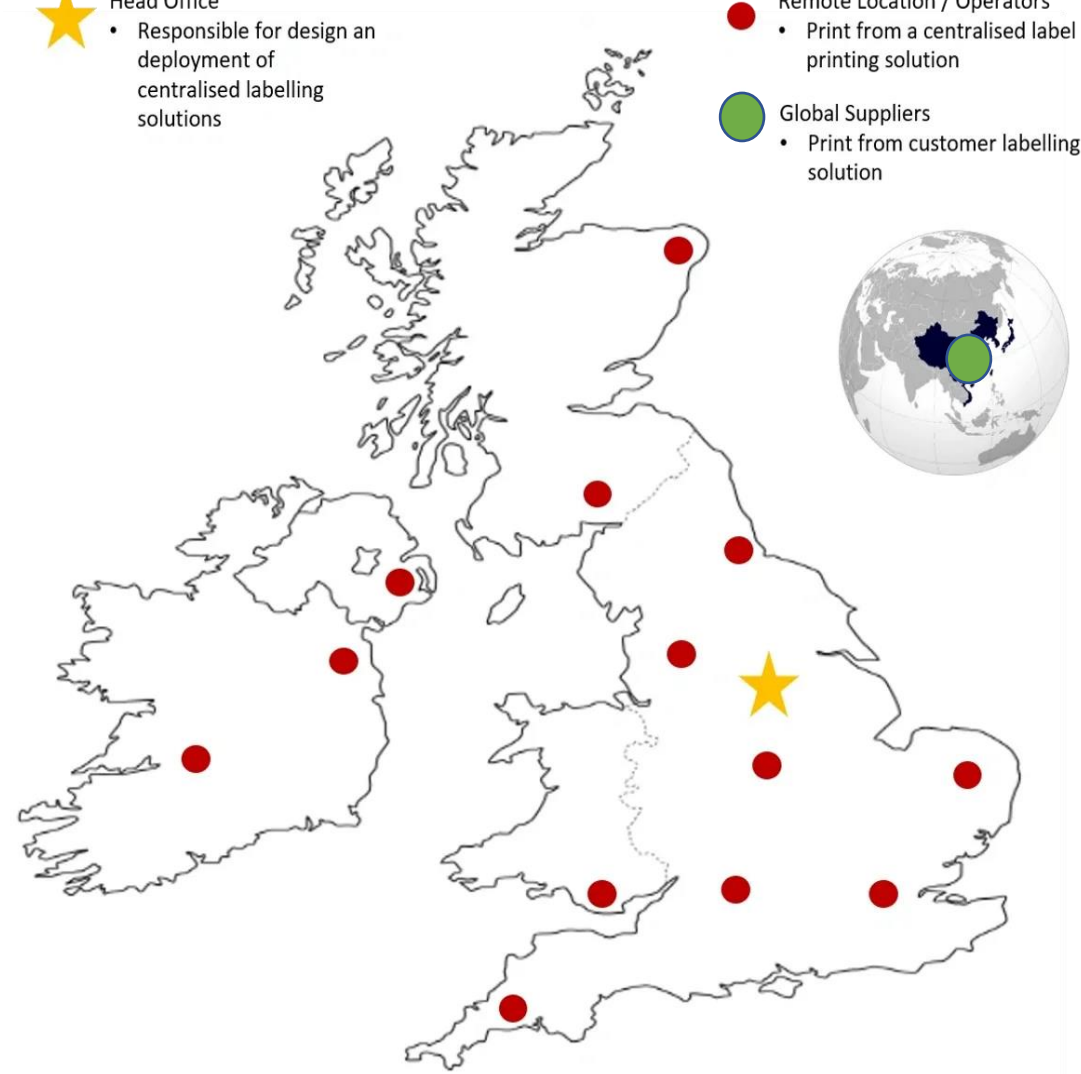
#### Remote Location / Operators

- Print from a centralised label printing solution



#### Global Suppliers

- Print from customer labelling solution



The screenshot displays the NiceLabel Cloud web interface. On the left, there's a 'Print' button and a 'Variables' table. The main area shows a label design with a barcode and text.

Variable	Value
Product Name	PRODUCT
SSCC (Serial Shipping Container Code)	03831234560000018
Count of Trade Items	0001
Best Before Date	20.05.16
Batch or Lot Number	223344
GTIN	03831234560000018

The label design includes the following text and barcodes:

- PRODUCT
- SSCC 03831234560000018
- CONTENT 03831234560087 COUNT 0001
- BATCHLOT 223344 BEST BEFORE 20.05.16
- Barcode 1: (02)03831234560087(37)0001
- Barcode 2: (15)160520(10)223344
- Barcode 3: (00)03831234560000018

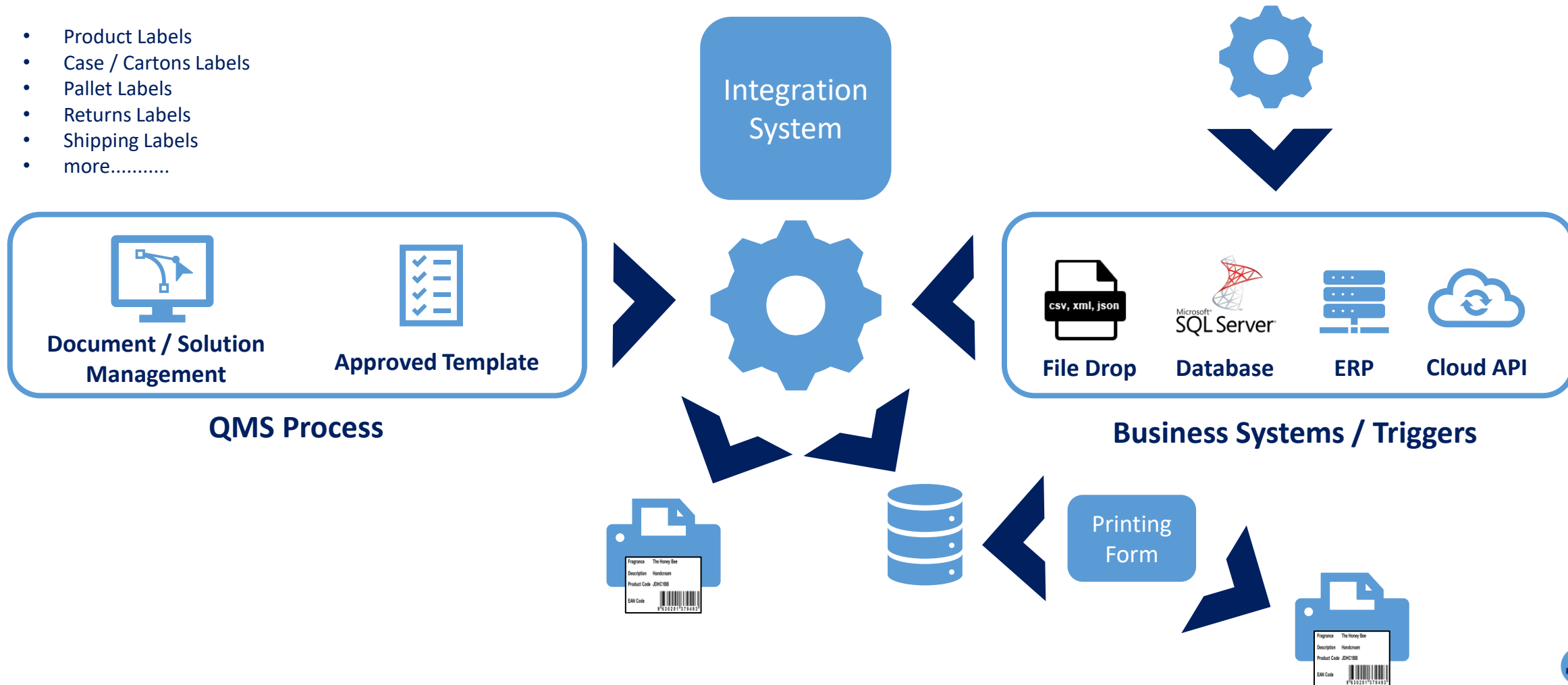


# Typical Integrated Printing or Data Management use case scenario

Integrate templates with business systems to support Local, National or Global printing of;

- Product Labels
- Case / Cartons Labels
- Pallet Labels
- Returns Labels
- Shipping Labels
- more.....

Process triggered by business system





The logo consists of a blue cloud shape with the text "NiceLabel Cloud" in white, centered within the cloud. This cloud is positioned inside a larger white circle that has a light blue border.

NiceLabel Cloud

# NiceLabel Cloud

Customer Success Stories

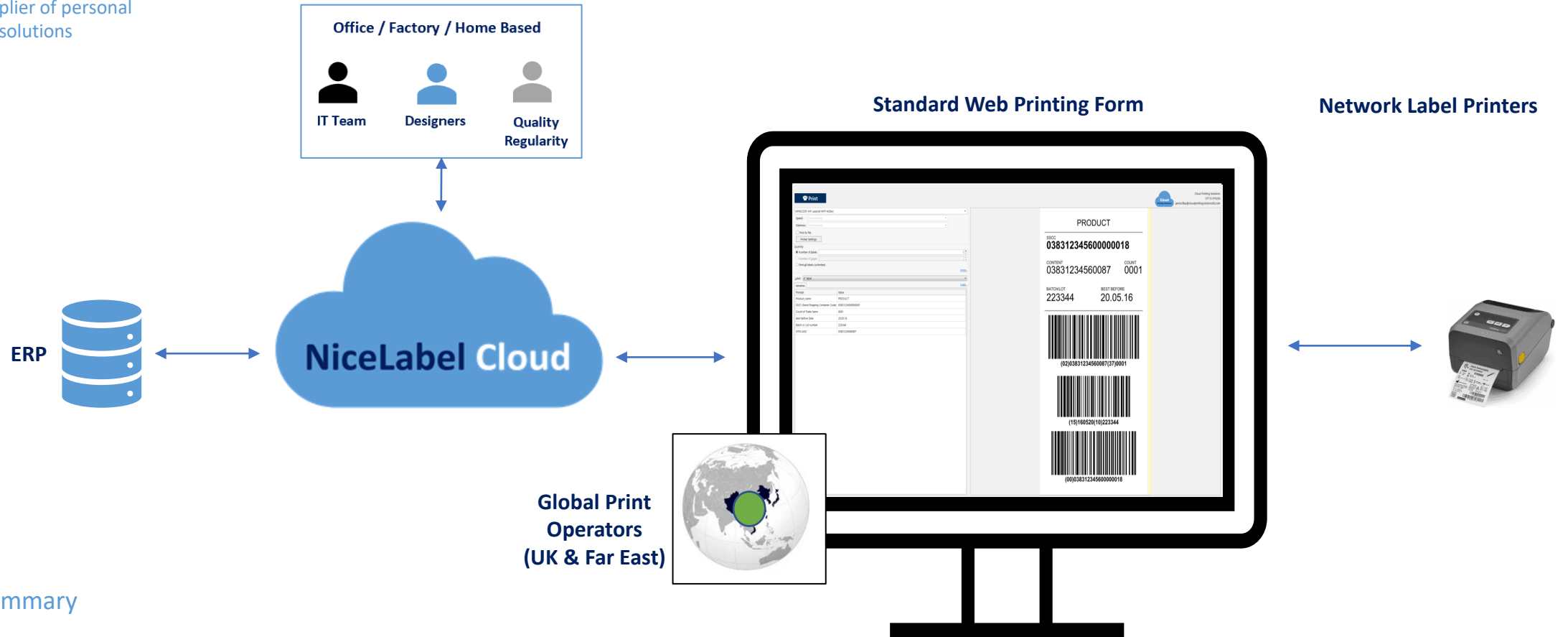
Cloud Printing Solutions Ltd  
T: 0161 818 6446  
W: [cloudprintingsolutionsltd.com](http://cloudprintingsolutionsltd.com)

The logo features a large blue cloud shape with the text "Cloud" in white and "Printing Solutions" in dark blue, both centered within the cloud. This cloud is positioned inside a larger white circle that has a light blue border. Above this main cloud are three smaller blue cloud shapes of varying sizes.

**Cloud**  
**Printing Solutions**

## Product Labelling

### International supply chain label printing

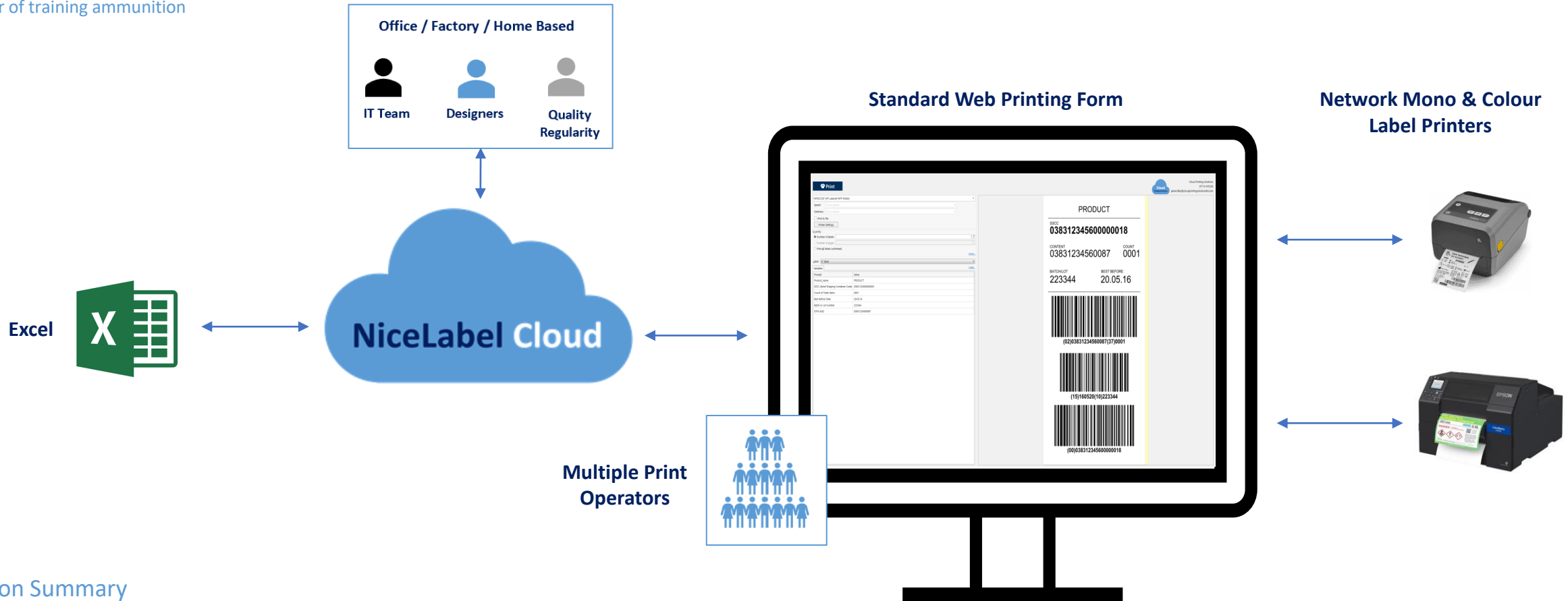


### Solution Summary

- Approved users design and manage label templates
- Automatically generated printing forms simplify and improve the operator printing experience
- Printing forms are deployed to **local and international users** via the internet
- Labels are printed by USB and network label printers

## Product Labelling

### On-demand label printing from Excel



### Solution Summary

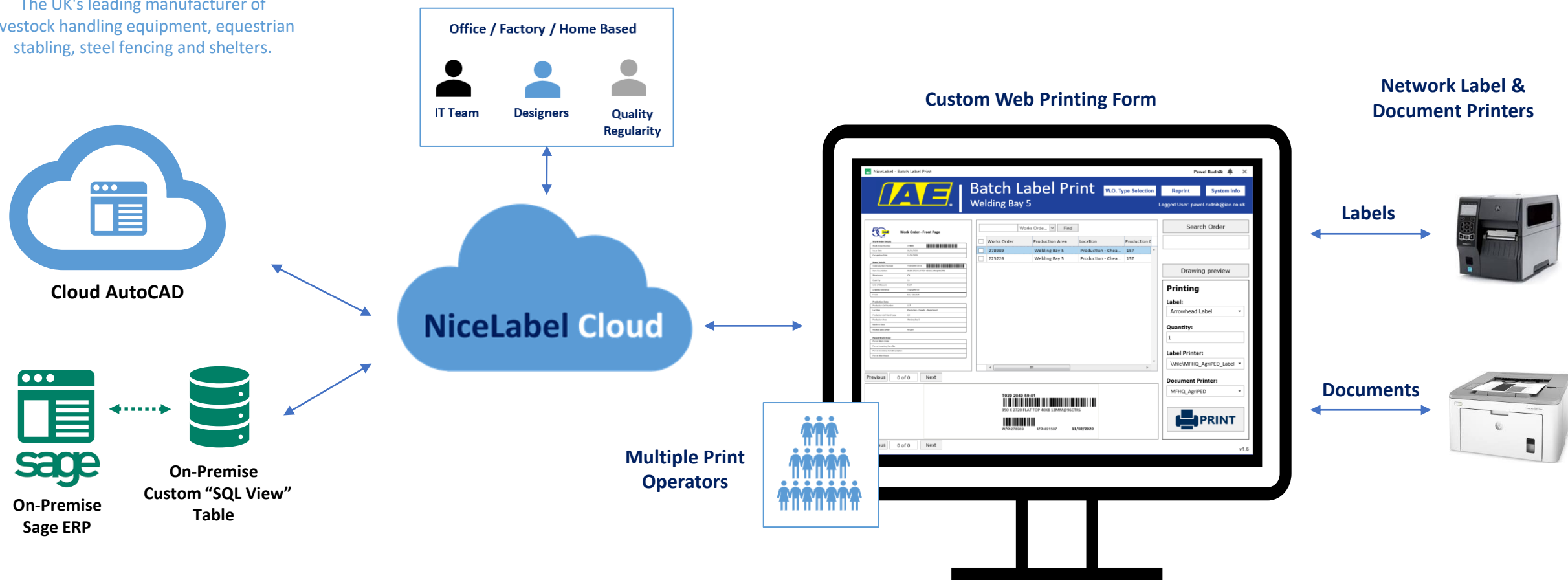
- Approved users design and manage label templates
- Templates are approved to comply with internal quality control procedures and FDA 21 CFR Part 11 where required
- Automatically generated printing forms simplify and improve the operator printing experience
- Printing forms are deployed to users via the intranet & internet
- Mono & Colour Labels are printed from Excel data to USB and networked label printers



The UK's leading manufacturer of livestock handling equipment, equestrian stabling, steel fencing and shelters.

# Production WIP Documentation & Labelling

## On-demand printing from multiple systems to 2 printers simultaneously

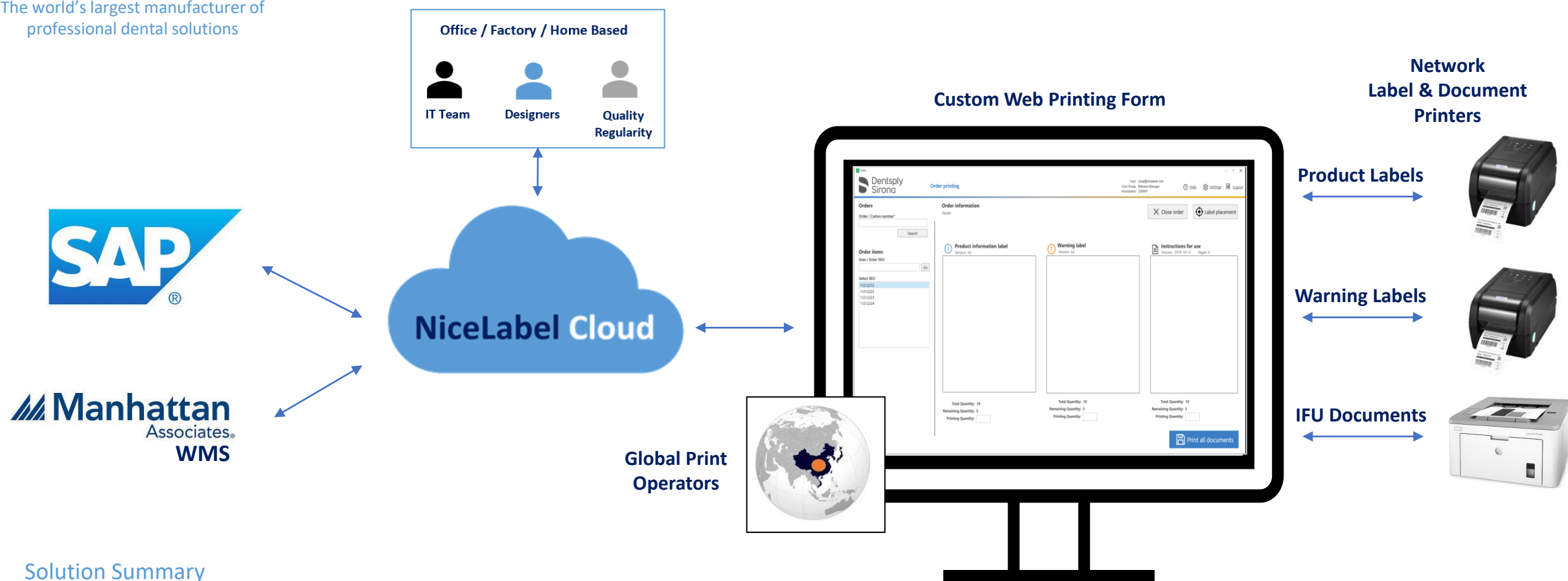


### Solution Summary

- IAE wanted a solution that could simplify the production process for users to print WIP (BOM/Assembly) documents and associated labels and documents prior to starting a new works order. The solution would help the user to identify and pick all materials, assemble the product and apply the appropriate labels.
- The user then selects the label and laser printer and uses 1 print action to print to both printers simultaneously.

## Product Re-Labeling

On-demand printing to 3 printers simultaneously to meet EU MDR Compliance



### Solution Summary

- Dentsply Sirona manufacturer products in 20+ global production facilities, distribute products from 13 global distribution centres operated by 2 main ERP solutions.
- Products are currently supplied with Product labels, Warning labels & IFUs in EFIGS (English, French, German, Italian & Spanish) text, produced in a variety of standalone labelling solutions.
- Products supplied into countries complying with EU MDR must now be provided Product label, Warning label & IFU text in the language where the product is to be supplied
- Global Distribution Center users enter work orders in the printing form to retrieve and print labels and IFU's in the required language and relabel products before dispatch.

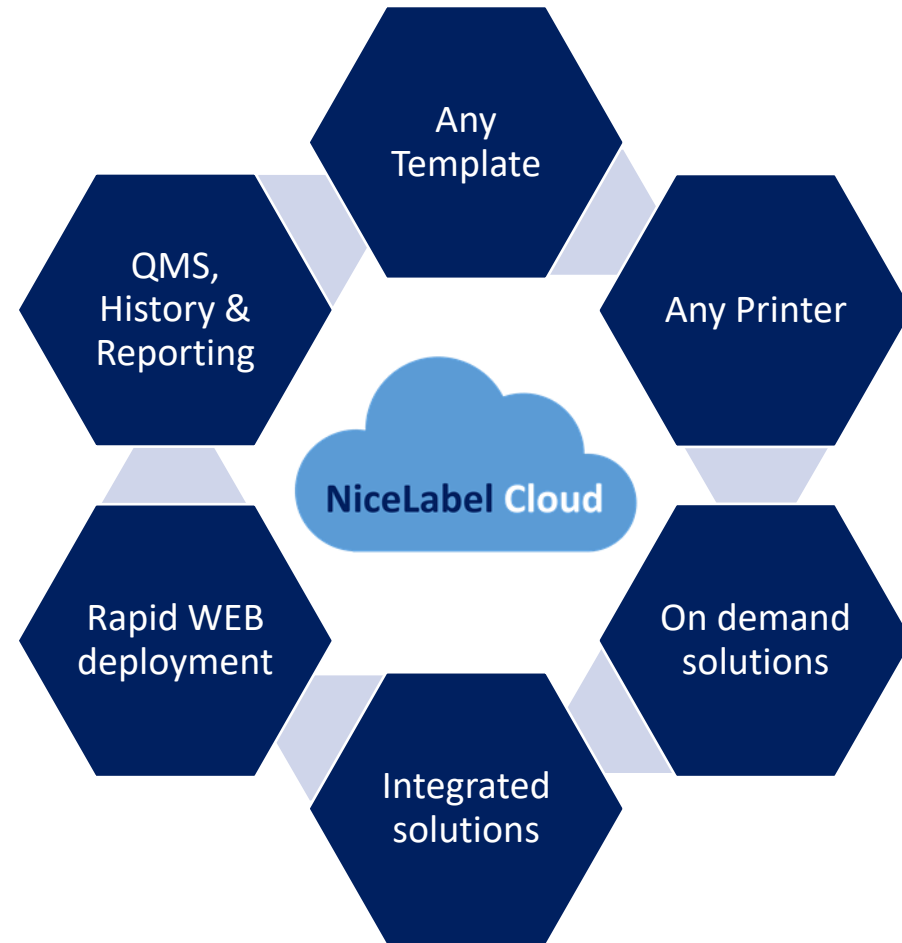
# NiceLabel Cloud Customer Success Summary

Subscription based Label Management System for ANY size business



## Various uses:

- Simple
- Custom
- Compliance



A blue cloud icon with the text "NiceLabel Cloud" inside, set against a white circular background.

NiceLabel Cloud

# NiceLabel Cloud

Stand **G38** for more information, demonstration  
or to arrange free trial

Cloud Printing Solutions Ltd  
T: 0161 818 6446  
W: [cloudprintingsolutionsltd.com](http://cloudprintingsolutionsltd.com)

A large blue cloud icon with the text "Cloud Printing Solutions" inside, set against a white circular background. There are also three smaller blue cloud icons above it.

**Cloud**  
**Printing Solutions**