

# Workshop Maintenance 4.0

David Miny | Sales Manager Europe

# Agenda

---

Introduction

Digital Transformation & Predictive Maintenance 4.0

Plan, Do, Check, Act

Conclusion

Case Study



# Digital Transformation is the Business Strategy; IIoT is the Technology Enabler

## Why is everybody talking about Digital Transformation?

The promise of real improvements, motivated by people (and made possible by technology)

Automating and optimizing operational processes in new areas that up until now weren't possible

## What is Industrial IoT?

Improved measurement technology

Cost efficient and cybersecure connectivity

Advanced Edge analytics

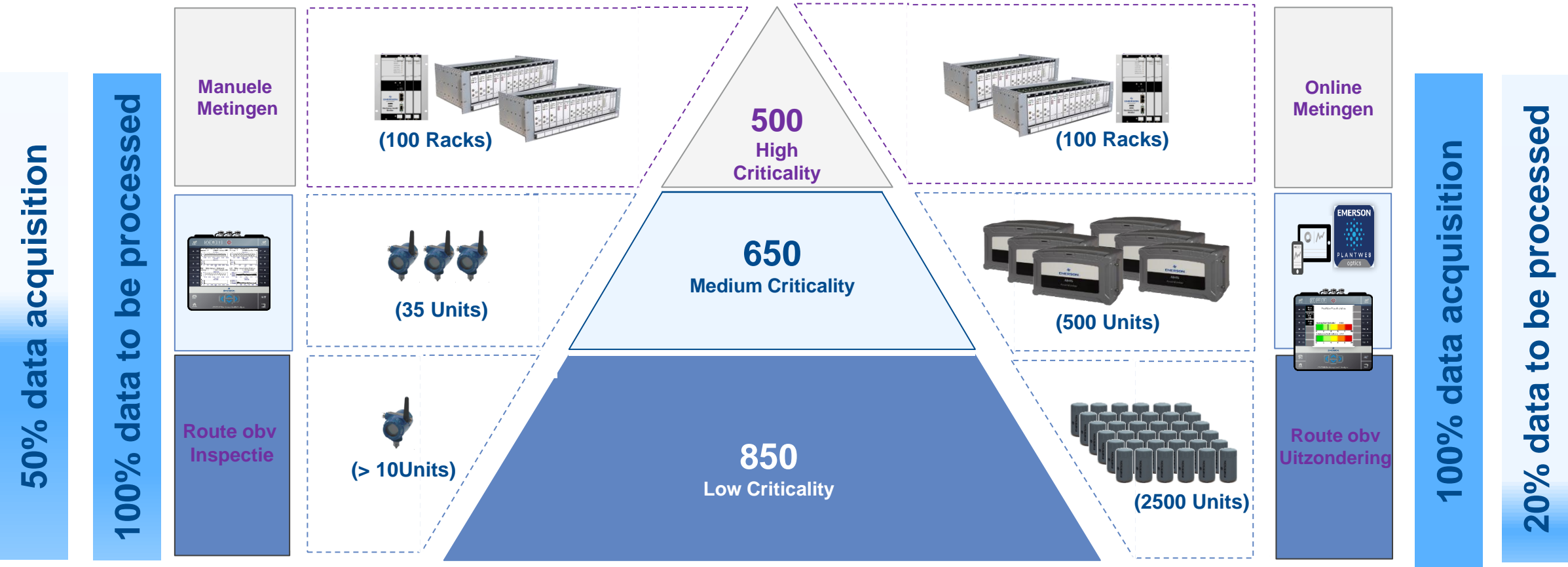


# Digital Transformation of Asset management

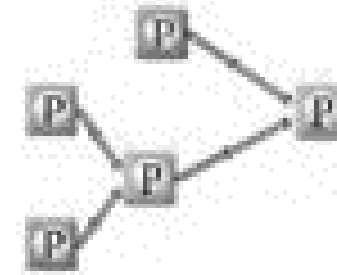
Strategy today

3 years

Digital Transformation



# PLAN: Strategy en Prioritization

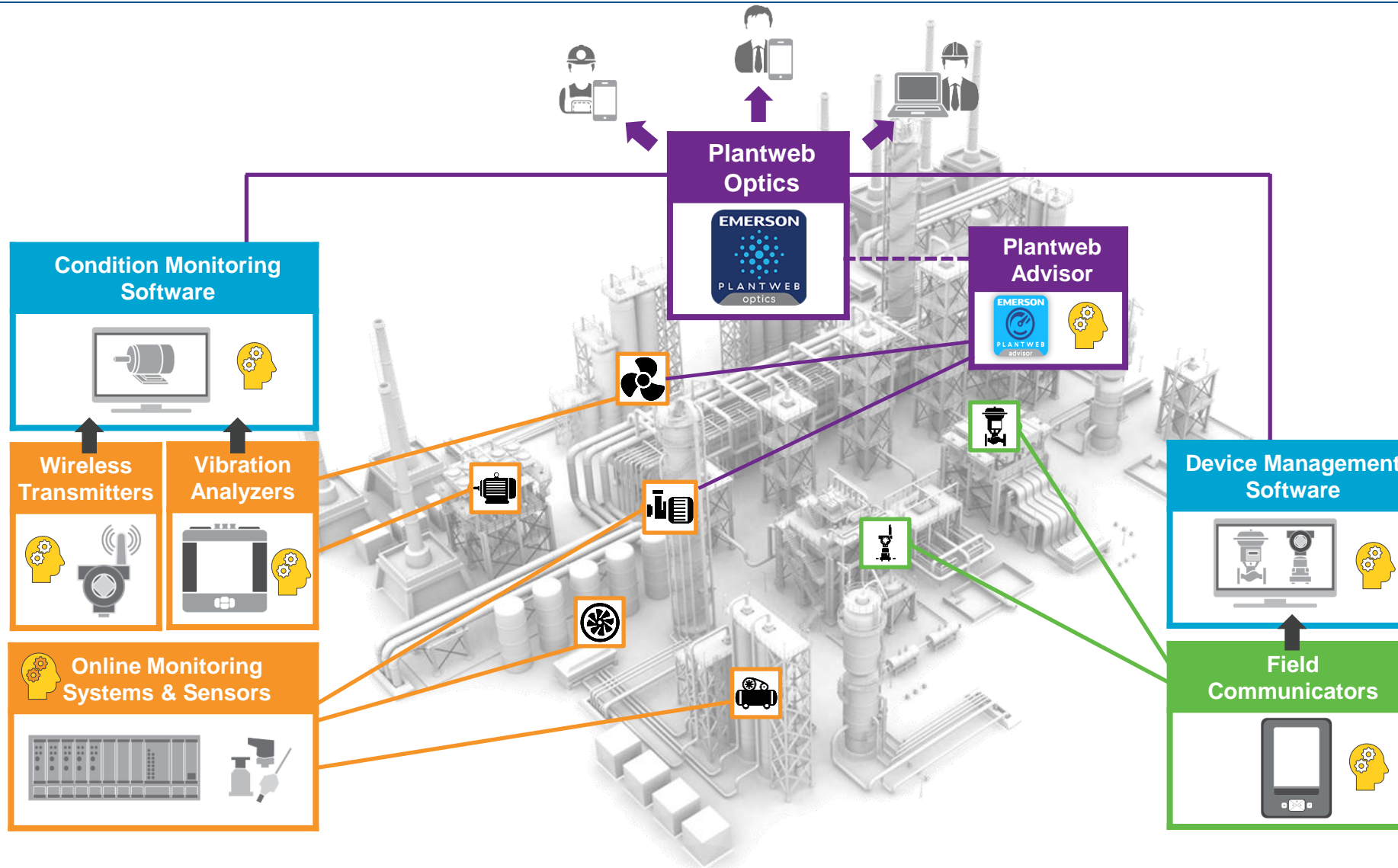


ROI



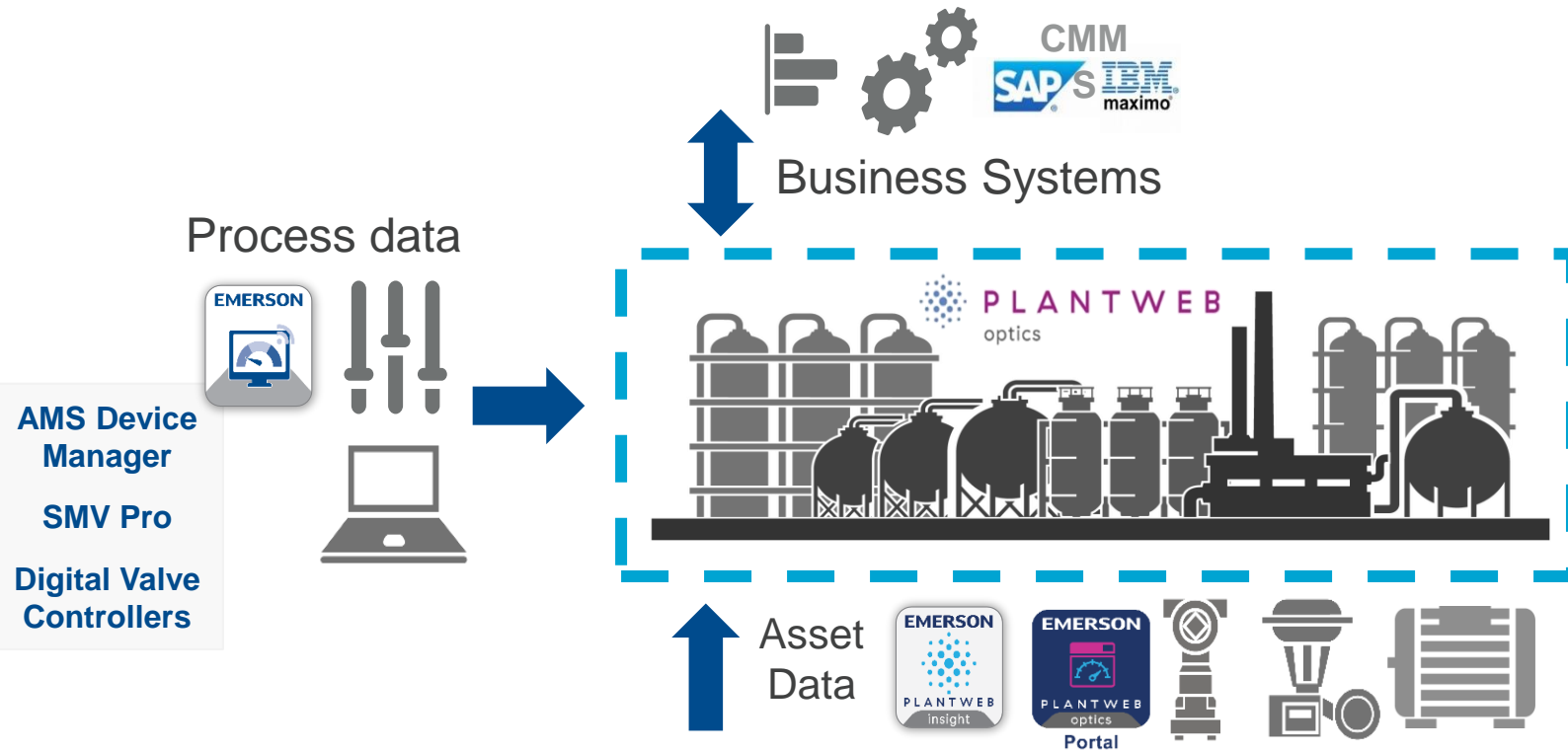


# DO: Collecting Asset Data



**Analytics & Diagnostics**

# CHECK: Visualising, Analysing and Predict



CONDITION-BASED



**Device & Machinery Diagnostics**

PRE-CONFIGURED



**Asset Health**

INTEGRATED MULTI-ASSET



**Asset Health & Efficiency**

ADVANCED & ENTERPRISE



**Asset Performance Platform**

ASSET OPTIMIZATION



**Digital Twins**

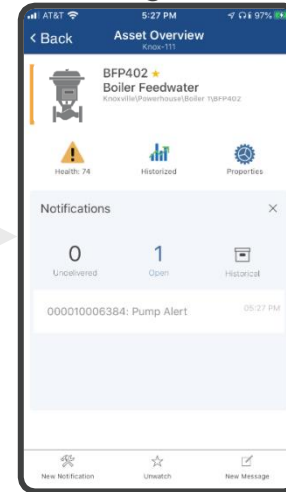
# ACT: Maintain & Improve



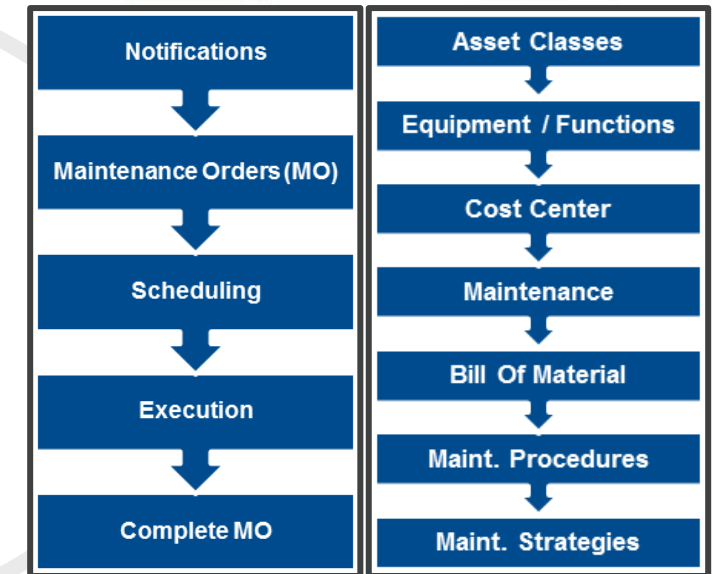
## 1. Alert



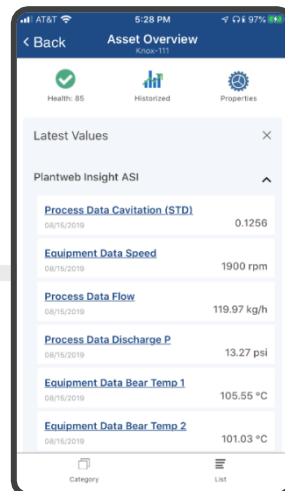
## 2. Creating a notification



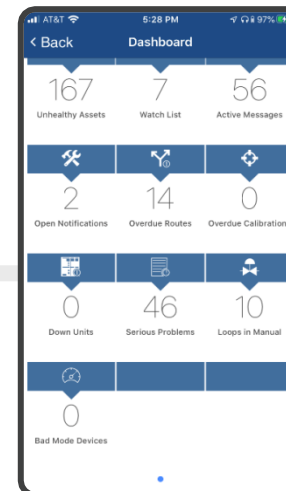
## 3. Plan & Schedule the work



## 5. Asset is back OK



## 4. Status Follow-up



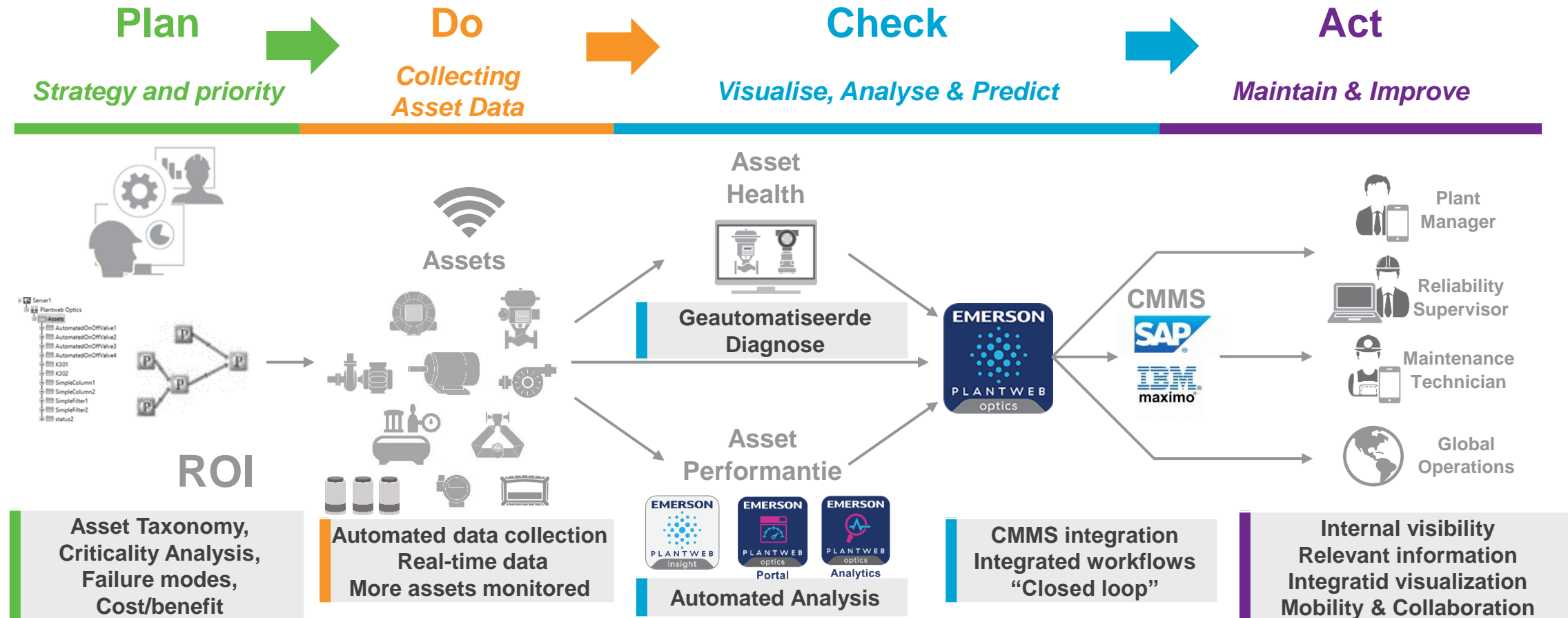
Sleuteltijd







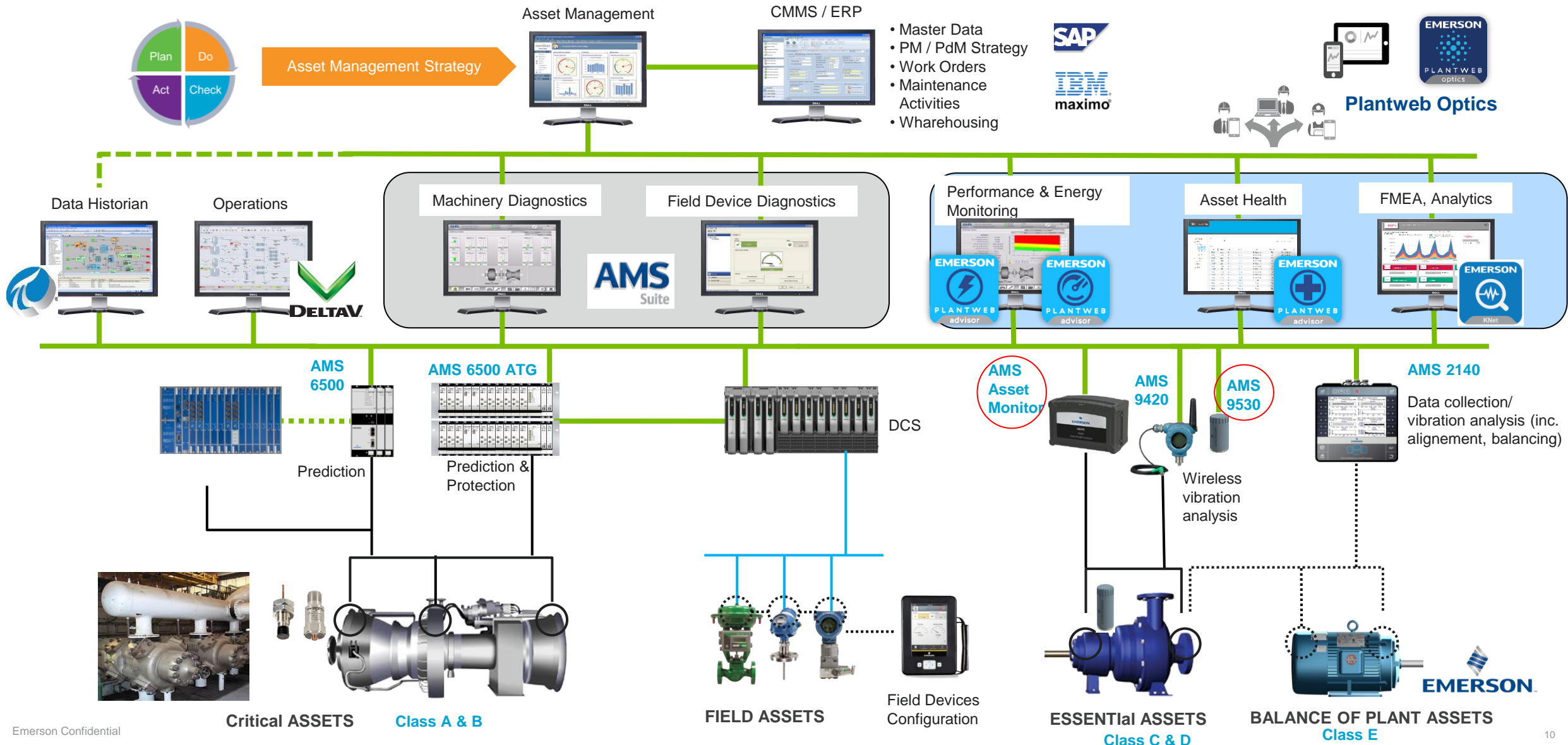
# Plantweb Ecosystem closes the Loop



**“With Plantweb Optics we expect to change the way we do Maintenance.”**  
– Evonik, early adopter

# Emerson's Reliability Solutions portfolio

## Industrial plant layout



# AMS Wireless Vibration Monitor

★ Advanced Version

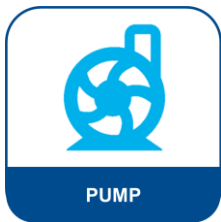
## Plantweb Insight



- Easy Install
- Battery management
- ATEX
- Lifespan – battery 3 to 5 years



COOLING  
TOWER



PUMP

## Sensor

- Single or Triaxial plus Temp sensor
- 13 absolute values like Overall vibration, analysis parameters and spectrum
- Cybersecure *WirelessHART®* Mesh Network

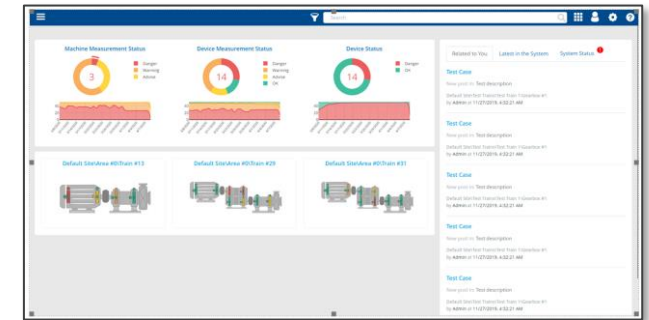


- Fully configurable settings
- Prescriptive Analytics/ Edge device



## AMS Machine Works

- Fully integrated in AMS Machine Works software

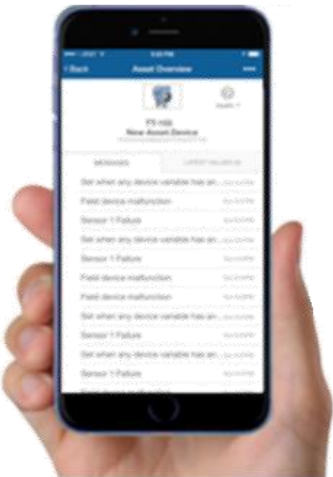
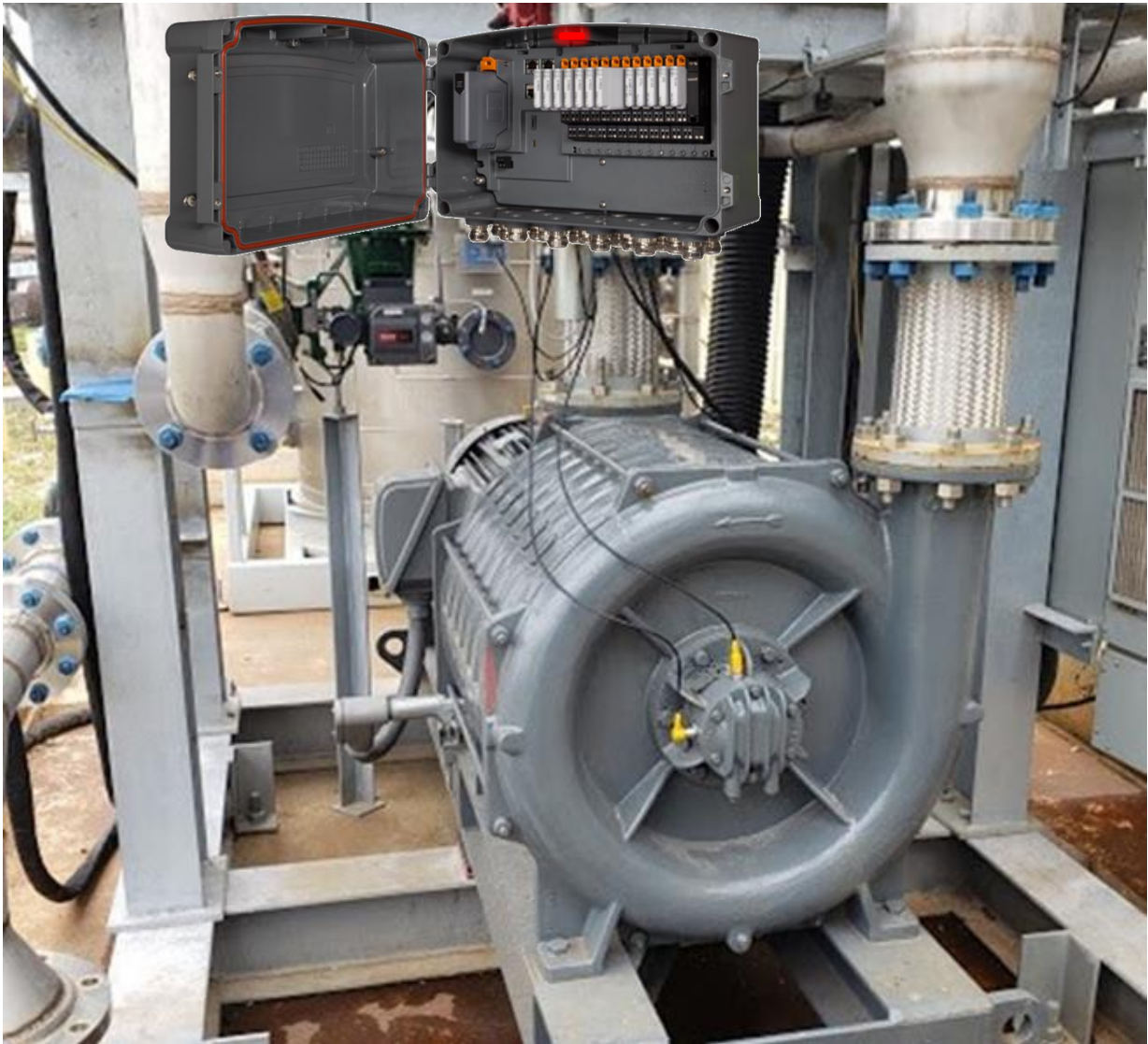


- Compact, self-contained
- CI I, Div 1 / IP66 / NEMA 4X enclosure



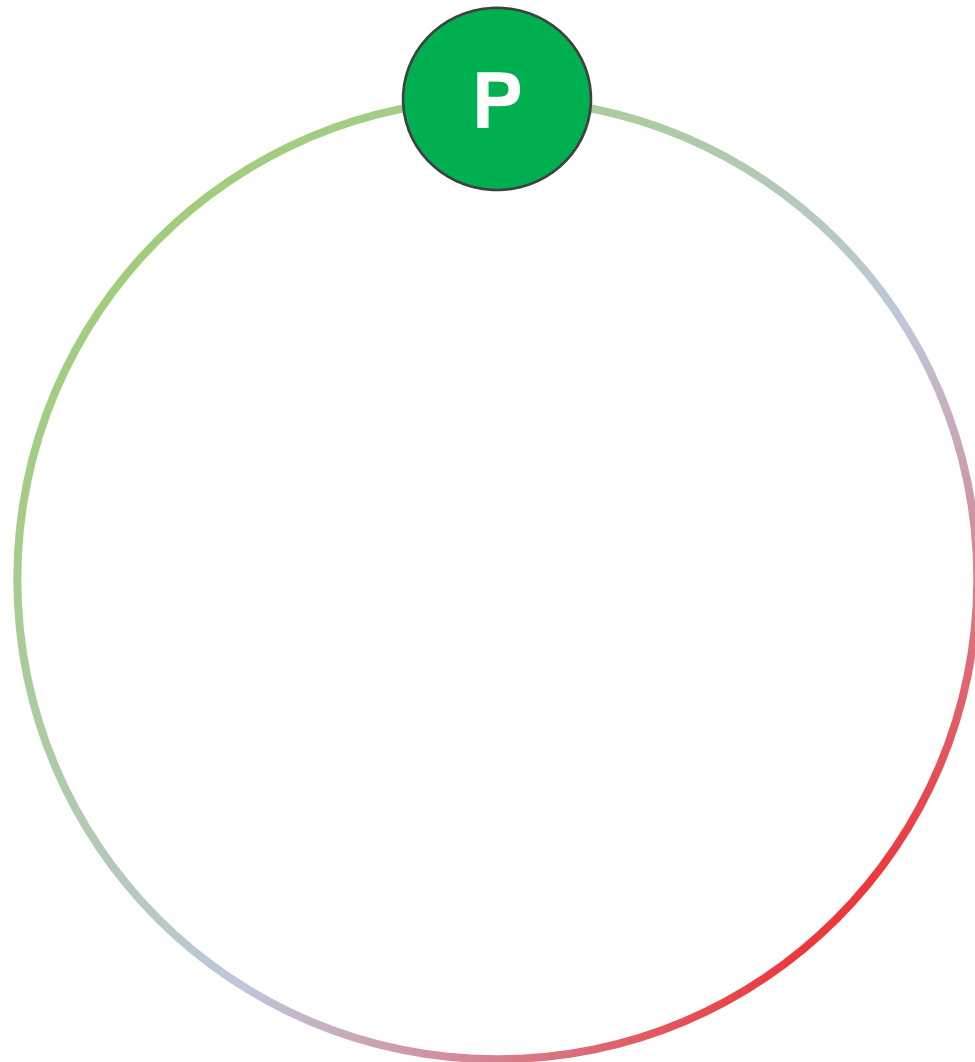
# AMS Asset Monitor – Emerson’s Edge Analytics IIOT Device

	Fan - axial, direct motor drive
	Fan - axial, gearbox drive
	Fan - centrifugal, centerhung
	Fan - centrifugal, overhung
	Gearbox - single reduction
	Generic - rotating, centerhung
	Generic - rotating, overhung
	Heat exchanger - tube - advisor
	Motor - electric, synchronous
	Pump - centrifugal, centerhung
	Pump - centrifugal, overhung
	Pump - centrifugal, overhung - advisor





# Case Study : NLG Processing en Distributie

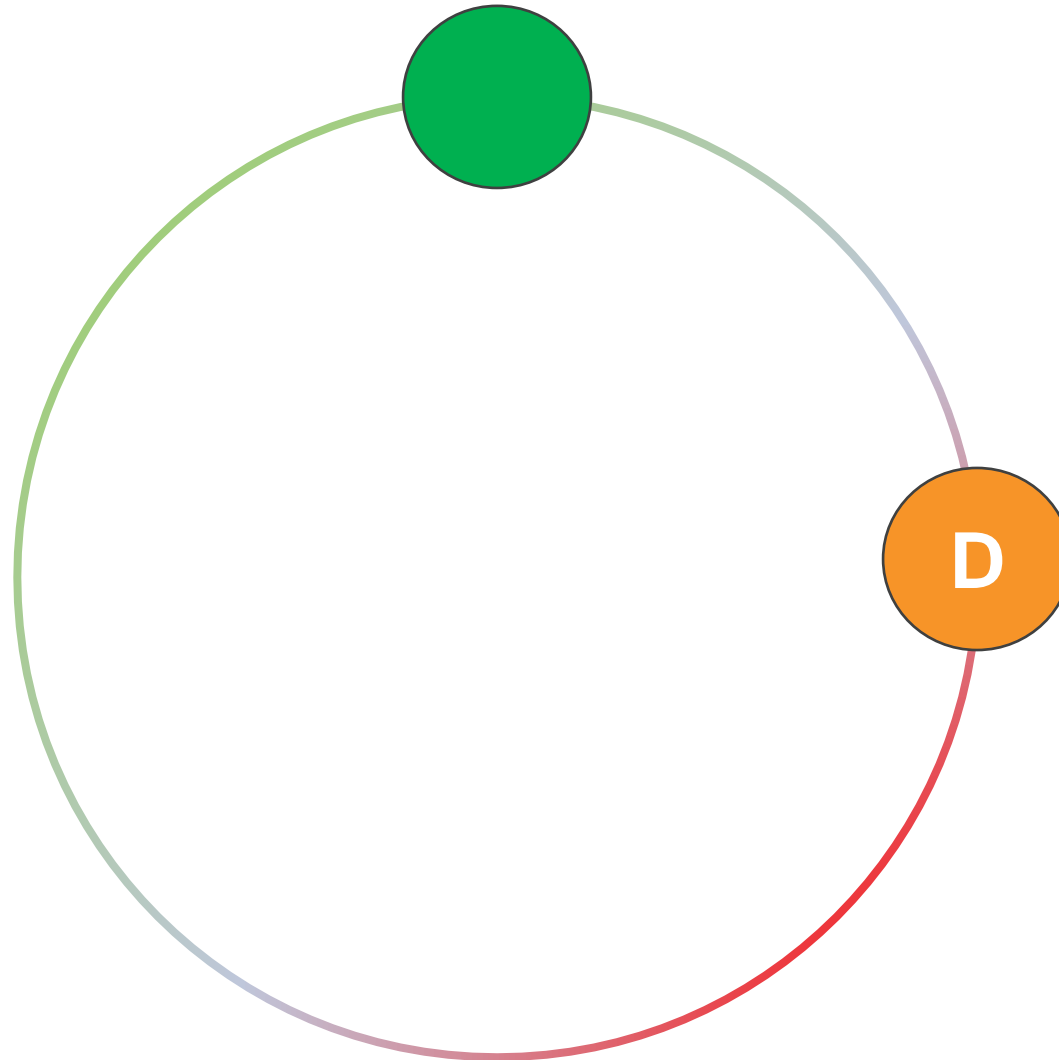


**System : Gas  
metering &  
Condensate Removal**

**Assets : Heat  
Exchangers, Vessels,  
Valves, pumps**

**Failure modes : Tube  
Fouling, Demister  
degradation, Seizure,  
alignment/balancing**

# Case Study : NLG Processing en Distributie



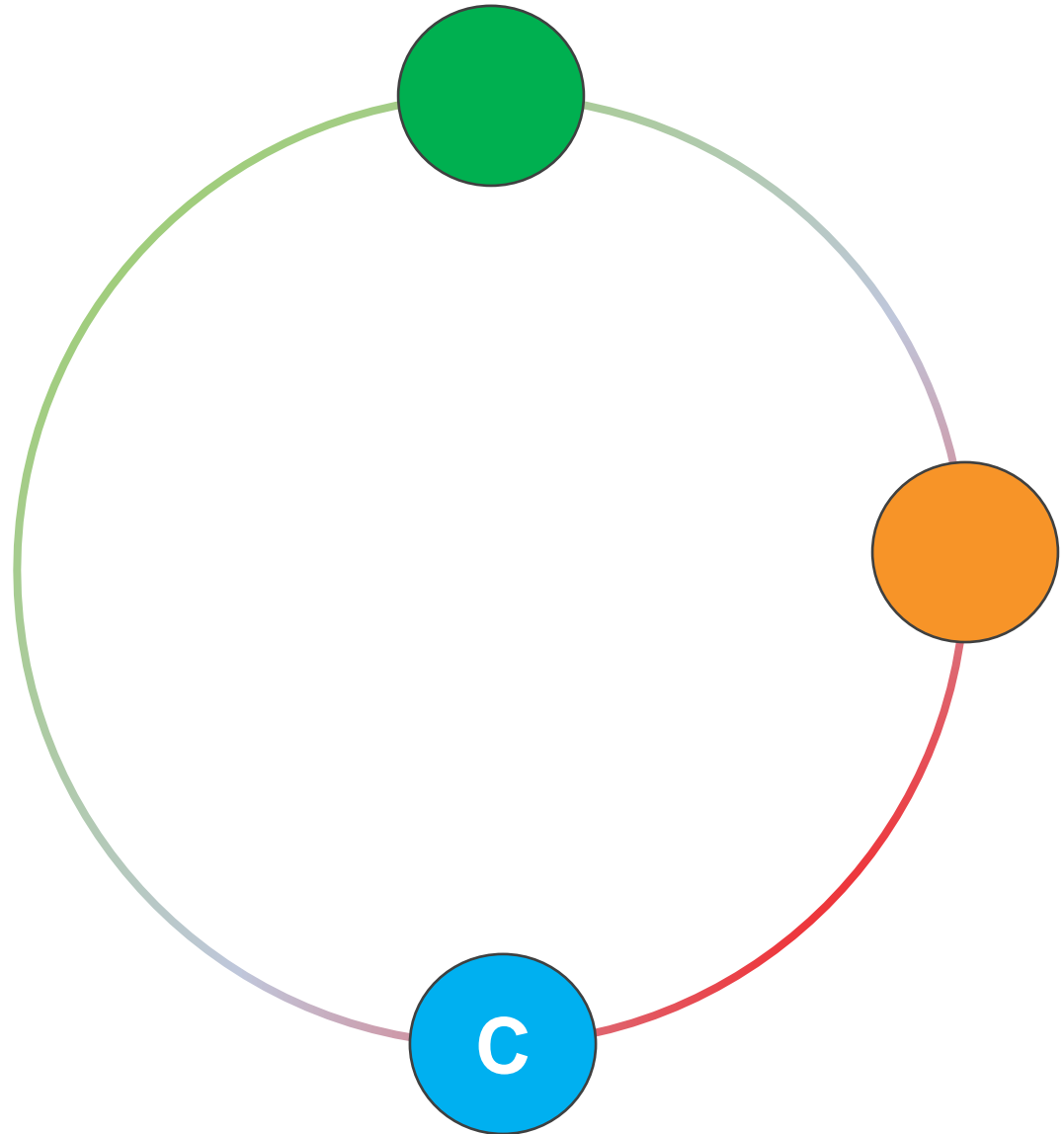
**Sensors :**  
Temperature,  
Corrosion, Pressure,  
Leak detection &  
Acoustic

**Software : Plantweb**





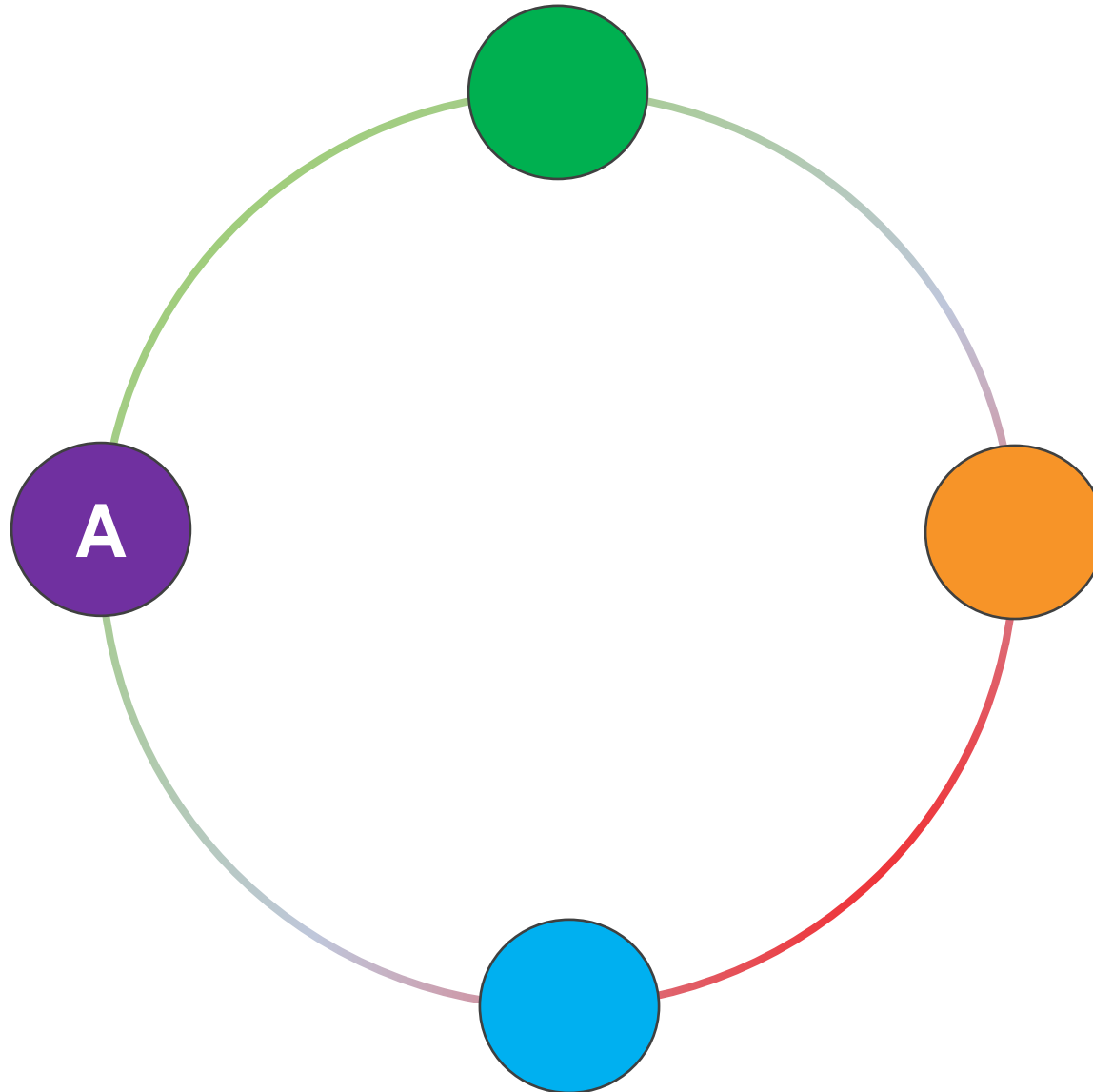
# Case Study : NLG Processing en Distributie



**Real-time  
Continuous Analysis**

**Relevante modellen  
voor Process  
Monitoring en  
Metingen**

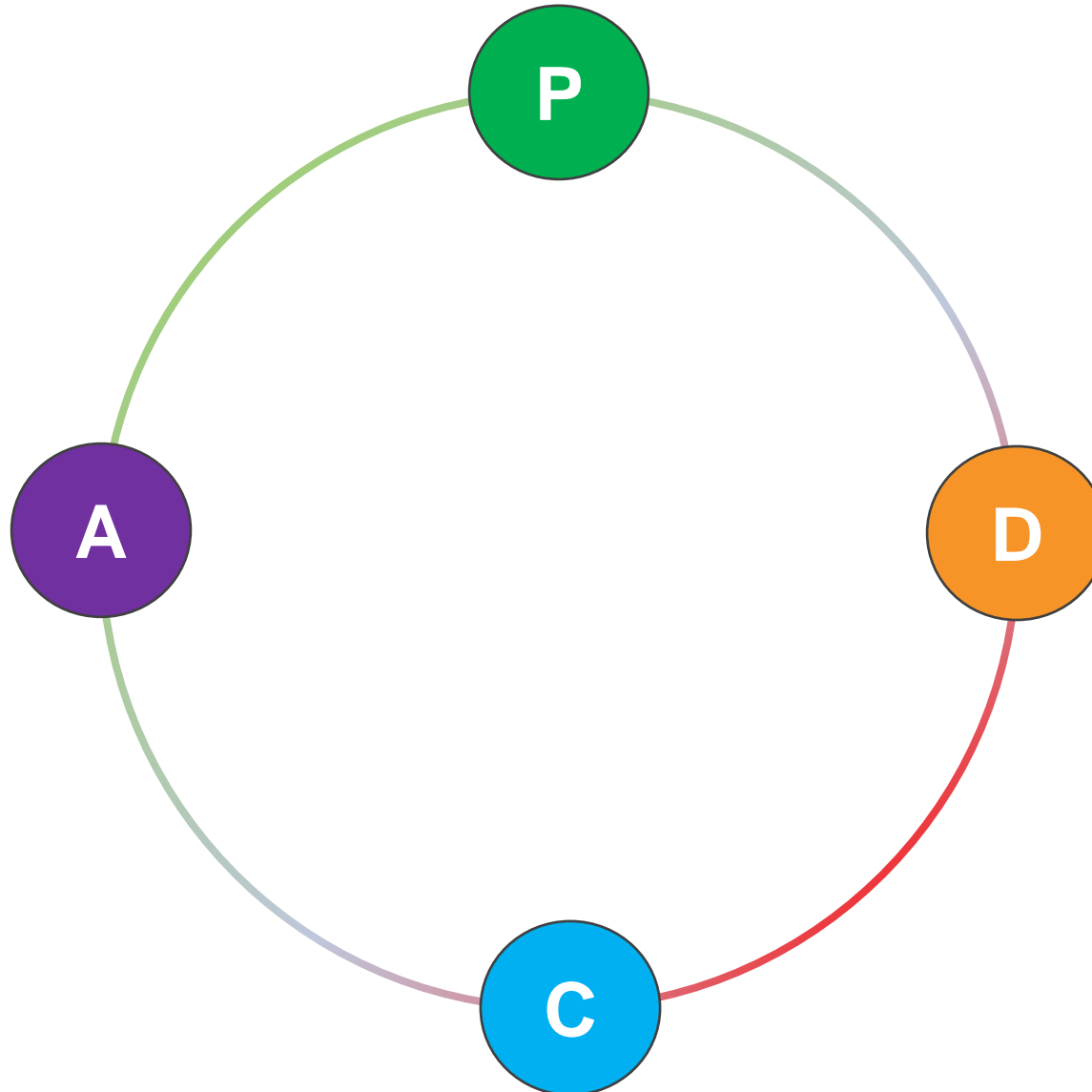
# Case Study : NLG Processing en Distributie



**Continu opvolging  
via Real-time ROI  
model**

**Invloed op  
Downtime,  
Maintenance Kost en  
Work Order KPI's**

# Case Study : NLG Processing en Distributie



**Current OPEX**  
**1.35 M€**

**Capex To Change**  
**245 k€**

**Potential Opex**  
**366 k€**

**ROI (jaarlijks)**  
**958 k€**



# Conclusion

---