

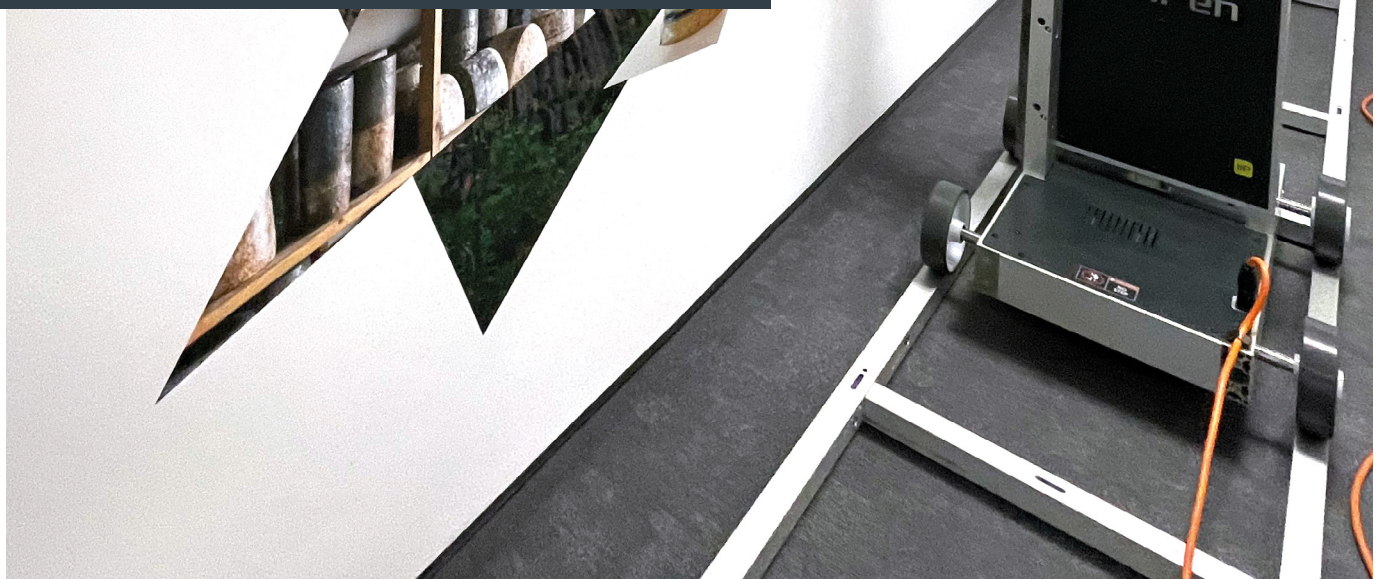


wallPen

GET VERTICAL

wallPen Information Kit:

Technical Details, Key Benefits, Application
Examples & Pricing



The wallPen: Revolutionizing Vertical Surface Printing

The wallPen is a cutting-edge, mobil large-format UV printer that is unmatched in its category. It delivers stunning, high-resolution images, graphics, and text directly onto walls and vertical surfaces efficiently and with ease. It is ideal for indoor and outdoor applications and produces outstanding results on nearly any surface.



Technical Specifications

- **Origin:** Designed and manufactured by wallPen GmbH in Wissen, Rhineland-Palatinate, Germany
- **Printing Technology:** UV printer featuring advanced Ricoh print head technology from Japan
- **Resolution:** Delivers 600 to 1,200 DPI for ultra-sharp murals
- **Printing Speed:** Prints up to 6 m² (64.6 ft²) per hour-fast and efficient
- **Ink Usage:** Highly economical, using only 5-10 ml per m² (0.17-0.34 fl oz/ft²), less than the volume of a tablespoon
- **Ink Type:** Scratch-resistant, water-resistant, EU-made water-based UV ink
- **Printing Dimensions:** Up to 400 cm (13' 1.5") in height with unlimited width
- **Operating Time:** Capable of running up to 24 hours a day with regular maintenance

For comprehensive technical details, please refer to our [datasheet](#).

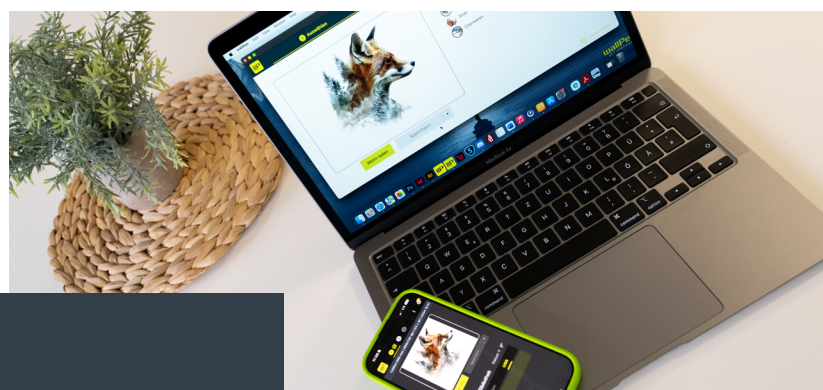
Limitless Application Potential

The wallPen opens up a world of creative possibilities, making it ideal for use in a wide range of environments-hotels, restaurants, museums, offices, trade shows, retail spaces, hospitals, schools, stadiums, airports, or even for street art and large-scale advertising.

It prints directly on virtually any vertical surface, whether smooth or textured-from wallpaper, wood, and metal to glass, stone, and cement-turning every wall into a stunning masterpiece.

Unique Benefits of Wall Printing

- **Efficiency:** Faster, more flexible, and less labor-intensive than traditional methods.
- **Creative Freedom:** Customize any space with unique designs, including artwork, photos, patterns, or personalized elements like names, logos, or slogans. Perfect for corporate branding, event décor, or large-scale advertising with precise, flexible options.
- **Long-Lasting Results:** Prints are waterproof, scratch-resistant, and UV-resistant, ensuring durability for years
- **Repaintable:** If necessary, the wall print can be easily covered with paint for a fresh look.
- **Eco-Friendly:** A sustainable solution with no waste, fire-resistant materials, and easy setup and removal, offering endless creative possibilities.





Complete Support for Your Success

We are dedicated to supporting you throughout every step, both before and after your purchase, to ensure lasting success with your wallPen. Our services include expert guidance, in-depth training, promotional materials, and marketing strategies to help you launch your business professionally from day one. Even before you begin your first project, our marketing initiatives will help you generate customer inquiries from your local area.

The Investment: How Your wallPen Pays Off

- **Price:** The basic unit is priced at 44,000 euros plus VAT.
- **Ink Flat Rate:** No ink costs for the first 24 months; after that, ink costs are approximately 3 to 5 euros per m² (11 ft²).
- **Other Operating Costs:** Around 4 to 5 euros per m² (11 ft²).
- **Selling Price:** In German-speaking countries, the cost is around 230 euros per m², depending on the market and location. Across Europe, prices generally range from 200 to 250 euros per m², varying by region and demand. An average printing capacity of 3 m² results in a net income of about 670 euros per hour.
- **Long-Term Profitability:** With low operating costs and high revenue potential, your investment quickly becomes a reliable income stream. Minimal ink costs and an efficient business model ensure your creative designs are highly profitable - predictable, scalable, and full of opportunities.

Flexible financing

wallPen offers support for your purchase:

- **Leasing:** Available in many countries, subject to credit approval and company history. Our financing partners provide impartial, no-obligation advice to guide you.
- **Financing:** We are pleased to assist you in preparing a business plan for the „wall printing“ business model to present to your local bank.
- **Funding Programs:** Depending on your country or region, attractive innovation and technology funding options may be available. Contact us for more details.

Ready to get started? Let's talk!

Our team is here to provide you with all the details you need. Schedule a no-obligation call and discover how the wallPen can benefit you and your business moving forward.

[Arrange telephone meeting](#)



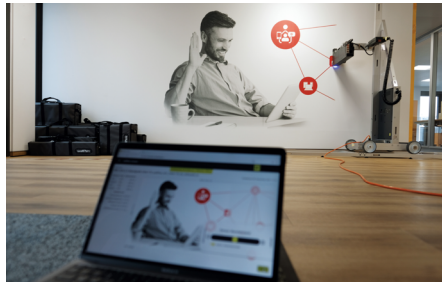
Hotel fünf10

- Printing on wallpaper and glass
- 35 square meters / 377 square foot
- 28 various murals



Sparkasse - German Saving Bank

- Printing on wallpaper, glass and mobile partition walls
- 66 square meters / 710 square foot
- 13 various murals



Children's Hospital Bethel (Germany)

- Printing on wallpaper and glass
- 400 square meters / 4305 square foot
- more than 200 different murals



Technical specifications & price overview

Technical data

Power	
Voltage	110-240 Volt, approx. 230 W
Dimension & Weight	
Dimension	80 x 60 x 170/400cm (W x D x H) 31.5 in. x 23.6 in. x 66.9/157.5 in. (W x D x H)
Weight	approx. 84 kg / 185lbs
Hard- & Software	
Printheads	RICOH GH2220
OS	wallPen v3
Control unit	wallPen App (Windows, Android, MacOS & OS)
Image size	
Max. height	370cm / 145.7 in.
Max. width	∞



Prices

wallPen® E2 44.000€

Ink & accessories (after flat rate)

- UV Ink, 200 ml
selectable Cyan, Magenta, Yellow, Black, White 88€
- 4 x 200 ml CMYK - Ink Set
Cyan, Magenta, Yellow, Black 345€
- 5 x 200 ml CMYK+W - Ink Set
Cyan, Magenta, Yellow, Black, White 410€

[A detailed price list can be viewed here](#)

wallPen
GET VERTICAL

Werkstrasse 15 • 57537 Wissen • GERMANY