

# Introducing a new class of fire detection







FireClass is a revolutionary new class of commercial fire detection products.

FireClass consists of a comprehensive range of products designed and produced in compliance with European requirements and quality standards.

FireClass is designed to appeal to both the end user and installer with the latest fire detection technology packaged in an easy to install, out-of-the-box, digital open-protocol solution.

A new class of fire detection designed to meet all of your needs from a single supplier.

# Whatever the need, you need FireClass

## Comprehensive Range

FireClass provides a broad range of detection solutions. FireClass conventional fire detection products range from the low cost J408-2 2 zone panel to the expandable 24 zone J424 panel.

These are complemented by an enviable range of the latest conventional fire detectors and accessories focused on providing comprehensive protection and minimum false alarms.

FireClass addressable fire detection products range from the easily installed out-of-the-box FC500 range and FC MAE software to monitor various locations via IP; to the highly featured up to four loop FireClass FC700 fire alarm series, as well as the new FireClass FC600 networked digital protocol fire panels with optional FireClass Graphics.

FireClass Addressable uses a powerful and robust digital protocol for high reliability and flexibility in installation.







Optimum Protection,  
Minimum Disruption

# FireClass A New Class of Fire Detection

## Fully Approved

In order to ensure peace of mind for both the installer and end user, FireClass products are third party approved and certified to relevant European standards.

FireClass approvals go beyond the minimum requirements including EN54 approval of the FireClass network, EN54-13 system approval, EN54 detector approval in all detection modes and the Prescient III Extinguishing Panel having EN54-2, EN54-4, EN54-13 and EN12094-1 approval.



## Digital Open Protocol

FireClass provides a digital protocol solution widely available throughout the market via trade and distribution specialists, ensuring freedom of choice for installers and end users.

Developed originally for the harsh marine environment, FireClass uses a robust digital protocol that supports various wiring configurations to simplify installation and retrofit applications; often problematic for competitors' protocols.

## Easy to Install

Ease of installation and engineering underpins the concept of FireClass. It runs through all the products. For example, panel installation is simplified by allowing electronics to be easily removed for first fix, whilst simple user friendly configuration software and fault finding tools speed up commissioning.

Field device installation is simplified through the flexibility of the FireClass digital protocol and other features, such as the ceiling tile adaptor that can significantly speed up detector installation.



# Why FireClass



FireClass is a digital fire detection technology built on over 50 years of dedication and performance from Johnson Controls.



The panel's core technology uses a digital fail safe algorithm to talk to each device and determine if that device is functioning as it should. The system can then promptly and precisely alert facilities management personnel, based either on-site or remotely, to any breakdowns or maintenance issues.



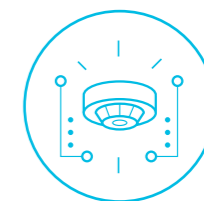
FireClass provides an extended 10 year lifespan on the CO sensitivity element. This device is primarily used to protect occupants whilst they sleep.



Widely chosen as the fire detection product of choice, FireClass addressable control panels take today's computer performances and adapt them to become one of the most effective and sophisticated fire alarm panels on the market.



FireClass encompasses three main levels of detection including optical smoke detection, heat detection and detection of CO levels. Depending on the application; these can be adjusted to various levels of sensitivity in order to sense a fire and reduce false alarms.



The Triple Sensor Detectors can sense all signatures of fire including heat, smoke and CO. The system analyses all three channels of data and rapidly analyses, using sophisticated algorithms to provide an accurate confirmation of a real fire.



# Comprehensive portfolio for your diverse needs



### FC700 Series:

- Highly featured two loop digital addressable fire alarm systems
- 8.4" TFT colour touch screen multilingual user interface
- Flexible single or dual hardware loop configurations
- Up to 250 devices per panel



### FC600 Series:

- Supports 250 or 500 addresses per panel
- Two Shared Power (SP) loops or one High Power (HP) loop
- Can co-exist with FC700 series panels on same network
- Colour LCD display with 32 zonal LEDs
- Simple to operate user interface
- Flexible loop configurations to boost loop power and address capacity
- Comprehensive point management  
10000 event log



### FC500 Series:

- Auto learn and auto addressing with Intelli-Zone feature
- Full out-of-the-box functionality
- Versatile easy to install addressable alternative to conventional



### Field Devices & Accessories:

- Reflective Sound Monitoring (RSM) and Reflective Light Monitoring (RLM)
- (RLM) enable a full self-test of the visual fire alarm devices
- Detector Bases & Accessories
- Optical /Heat, Multi sensor and Optical/Heat/CO triple multi sensor
- Call Points (Indoor/Outdoor)
- Addressable Modules
- Sounders & Beacons

Multitude of addressable and conventional fire detection panels and accessories to choose from





## FireClass Features that set it apart



### Multi Account Engine

Monitor multiple FireClass systems across the world with the new FireClass Console Multi Account Engine (FC MAE) software.



### Graphics Software

Windows based Hi-Res colour display graphical interface provides annunciation and status of complete fire detection system using latest FireClass digital technology and helps monitor and manage an emergency in the event a fire is detected.



### FireClass Checker

Simulates the points in panel using site configuration. Takes point count, cause and effect configuration from panel, no loading of points manually. Shows screen display to allow easy use of panel commands during testing (FireClass Remote Screen). Use of virtual comports to allow download of panels.



### Triple Sensor Detectors

Triple Sensor Detectors can sense all signatures of fire including heat, smoke and CO. The system rapidly analyses all three channels of data using sophisticated algorithms to provide an accurate confirmation of a real fire.



### Zonal Maps

Allow easy access to information such as floors or detectors. Site configurable to carry the most up-to-date information. Can save time in event of a fire and help speed up response during firefighting. Touchscreen user interface with context sensitive help. Customizable multilingual home screen.



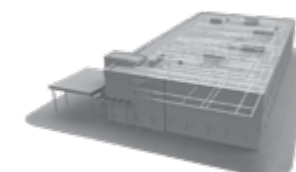
### Digital Protocols

Frequency shift keying, ie. digital modulation. Fewer false alarms due to interference immunity. Re-use of old cabling from previous installations. Savings in cable type by using unshielded cables. No wiring faults with fewer false alarms and more reliability. Fewer problems with installations near antennas/ radios.



### RFID

Keyless log-on using RFID tags. No need for passwords. Identifies and logs user actions. Easy panel access under emergency. Scroll button allows all active alarm events to be viewed.



### High Powered Loops

No longer dictate the usable size of the detection loop. Can be alternatively distributed to form two shared power (SP) loops. A non-symmetric architecture. Dynamic current sharing.





# Applications

Different environments require different solutions which is why we have developed a wide product portfolio.

### Commercial

The FireClass range comprises a complete fire detection solution for all commercial environments. Bringing sophisticated fire detection technology into these public spaces, used by millions each day, will ensure a safe and secure environment.

FireClass systems provide an unbeatable level of accuracy and ease of use for building personnel, installers and firefighters.

### Office and Residential

Keeping your home, business, loved ones and property safe is of paramount importance. For ultimate safety and adaptability FireClass products can be installed to protect any environment.

In corporate office buildings, false alarms can be an expensive and time consuming blight on business and the fire and rescue services. The FireClass range features a number of enhanced fire detection technologies designed to improve the management of false alarms and reduce their impact.

### Retail

Retailers large and small face the constant challenge of loss prevention, whether through vandalism, theft, fraud, or robbery. Industry statistics tell us that commercial fires cost billions of dollars to the economy and more than 50% of private businesses never recover from such incidences.

Protecting a business against fire and smoke damage is important, but safeguarding the welfare of employees and customers should be of primary concern in the overall running costs of any business.

### Hotels

Hotels often offer a complex challenge with varying room sizes, restaurants, leisure facilities and public areas all under one roof. The reliability of the system is paramount as its primary function is to protect life. FireClass systems provide the most effective cover, performance you can count on with minimum disruption to the operation of the building and its occupants.

### Care Homes

The reliability of a suitable fire detection and alarm system within a residential care home is paramount as its primary function is to protect life. Unlike most buildings whose occupants are of sound mind and body, this is not always the case in residential care premises and this should be taken into account when planning your fire detection system.

Disruption can be stressful to residents and it is therefore vital that the chosen system provides effective cover, performs reliably, and gives the maximum possible warning in the event of fire, given the additional difficulties in evacuating residents to safety.

### Manufacturing and Warehouse

Warehouses and manufacturing spaces can vary enormously in size and process, some being fully automated and some having multiple occupants at different times of the day. Distribution warehouses can be difficult places in which to work as they may require specialist platforms for working at height and could present on-going problems for maintenance and repair.



Retail



Education



Hospital



Medium/ Big Building Size



Office



Hotel



Small/ Medium Building Size



Factory/ Warehouse

# Locations

## UAE



Johnson Controls  
 PO Box 61355  
 Block D, Floor 3  
 Office Park Building #56,  
 Dubai Internet City,  
 Dubai, United Arab Emirates  
 Sales inquiries:  
[yazeed.alahmad@jci.com](mailto:yazeed.alahmad@jci.com)  
 Tech support:  
[Techservices-mzx@tycoint.com](mailto:Techservices-mzx@tycoint.com)

## UK



Johnson Controls  
 Tyco Park  
 Grimshaw Lane  
 Newton Heath, Manchester  
 M40 2WL  
 United Kingdom  
 Sales inquiries:  
[FireClassSales@tycoint.com](mailto:FireClassSales@tycoint.com)  
 Tech support:  
[TechServices-Detection@tycoint.com](mailto:TechServices-Detection@tycoint.com)

## Turkey



Johnson Controls  
 Tyco Yangin Korunum  
 Sis. A.S. / Balikhisar Mahallesi 48.  
 Cadde No: 14 Akyurt / Ankara  
 Turkey  
 Sales inquiries:  
[be-fpp.Tr.Detection.Sales@jci.Com](mailto:be-fpp.Tr.Detection.Sales@jci.Com)  
 Tech support:  
[be-fpp.tr.detection.sales@jci.com](mailto:be-fpp.tr.detection.sales@jci.com)

## Italy



Johnson Controls  
 Via Gabbiano 22  
 Zona Industriale S. Scolastica  
 64013 Corropoli (TE) Italy  
 Sales inquiries:  
[FireClassSales@tycoint.com](mailto:FireClassSales@tycoint.com)  
 Tech support:  
[TechServices-Detection@tycoint.com](mailto:TechServices-Detection@tycoint.com)

## South Africa



Johnson Controls  
 Unit 3, Thandanani Office Park  
 Halfway Gardens  
 Midrand 3610  
 South Africa  
 Sales inquiries:  
[shane.payne@jci.com](mailto:shane.payne@jci.com)  
 Tech support:  
[TechServices-Detection@tyco-bspd.com](mailto:TechServices-Detection@tyco-bspd.com)

## Hungary



Johnson Controls  
 Office Campus  
 Gubacsi út 6B/1  
 1097  
 Budapest  
 Hungary  
 Sales inquiries:  
[customerservice-hu@tyco-bspd.com](mailto:customerservice-hu@tyco-bspd.com)  
 Tech support:  
[TechServices-Detection@tycoint.com](mailto:TechServices-Detection@tycoint.com)

## India



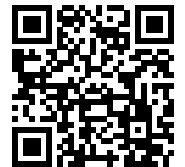
Johnson Controls  
 1002, C-Wing, 10th Floor,  
 Godrej Coliseum  
 Sion, Mumbai - 400 022  
 India  
 Sales inquiries:  
[FDP.InsideSales.IN](mailto:FDP.InsideSales.IN)  
 Tech support:  
[techservices-mzx@tycoint.com](mailto:techservices-mzx@tycoint.com)

Global Strength.  
 Local Expertise.





For more information about FireClass  
fire detection technology visit:  
[www.fireclass.com](http://www.fireclass.com)



---

#### About Johnson Controls

At Johnson Controls, we transform the environments where people live, work, learn and play. From optimizing building performance to improving safety and enhancing comfort, we drive the outcomes that matter most. We deliver our promise in industries such as healthcare, education, data centers, and manufacturing. With a global team of over 100,000 experts in more than 150 countries and over 130 years of innovation experience, we are the power behind our customers' mission. Our leading portfolio of building technology and solutions includes some of the most trusted names in the industry, such as Tyco®, YORK®, Metasys®, Ruskin®, Titus®, Frick®, PENN®, Sabroe®, Simplex® and Grinnell®.

For more information, visit [www.johnsoncontrols.com](http://www.johnsoncontrols.com) or follow [@johnsoncontrols](https://twitter.com/johnsoncontrols) on Twitter.

---

The power behind **your mission**

