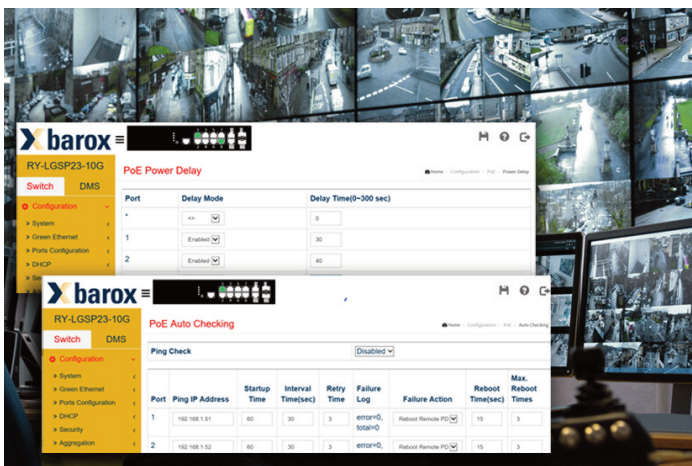




# barox Smart products embrace Operation Technology to add value

**Saving time and important bottom-line costs on engineering call outs, barox Smart products are enhancing VMS control by ensuring surveillance cameras are kept operational – without the need to send an engineer out to site; reports barox, technology leader and manufacturer of switches made for video networks.**



Enhancing VMS Systems like Milestone and Siemens with on-site action but without sending personnel to site, barox new efficient systems combine Information Technologies (IT) and Operational Technologies (OT), to meet the needs, challenges and experiences of installers and end-users.

## No camera is left behind when IT merges with OT

OT or 'Operational Technology' is defined as 'Hardware and software that detects or causes a change through the direct monitoring and/or control of physical devices, processes and events in the enterprise' - but what does this mean for the CCTV industry?

With Smart barox switches, VMS systems are greatly enhanced by ensuring that all cameras are up and running – negating the need to send an engineer out to a site. barox built-in technology such as 'PoE Auto Checking' acts to do exactly this.

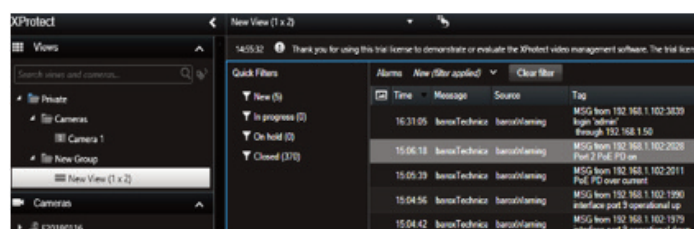


Fig.1 Milestone XProtect Alarm Manager



Fig.2 Milestone with barox Smart plug-in

In addition, other functions such as barox 'PoE Power Delay' make sure that in the event of a power shortage, the Switch will not be overloaded by peak load when all cameras ask for power at the same time. barox PoE Power Delay management acts to delay power to the device, and re-powering to ensure that every camera on the network boots-up easily and effectively.

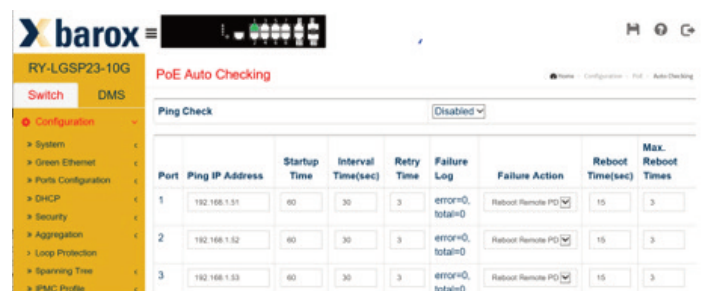


Fig.3 barox RY-LGSP23-10G PoE Auto Checking



Fig.4 barox RY-LGSP23-10G PoE Power Delay

## **barox Smart technology**

With barox Smart technology, on camera outage, instead of the well-known issue of having a dark screen displayed, information is automatically fed from the Switch, with diagnostic information such as 'Short cut on cable' or 'Port shut down due to PD over current'. This invaluable network information helps to alert and define if there is a technical issue or whether the system is under attack, and someone is taking out network cameras. In addition, physical infrastructure changes, like broken cable or added new devices can be automatically detected and transmitted for display to the VMS system.



barox switches are now available...

Tel. +49 7621 55 00 280 | Email: [mail@barox.de](mailto:mail@barox.de) | Web: [www.barox.de](http://www.barox.de)