

The logo for acmax, featuring the word 'acmax' in a lowercase, sans-serif font. The 'o' in 'max' is replaced by a stylized fingerprint icon.

FERMAX ACCESS CONTROL SYSTEM

THE MOST
COMPETITIVE IP
ACCESS CONTROL
SYSTEM



acmax

FERMAX ACCESS CONTROL SYSTEM



AC-MAX is a centralised access control system that uses advanced functions while also being simple to integrate. It is perfect for medium-sized projects.

The system allows you to comprehensively manage multiple access points distributed across various sites.

The system connects the different readers with IP controllers, using an intuitive software that allows to manage fingerprints.

Free software
Available and updated at
www.fermax.com

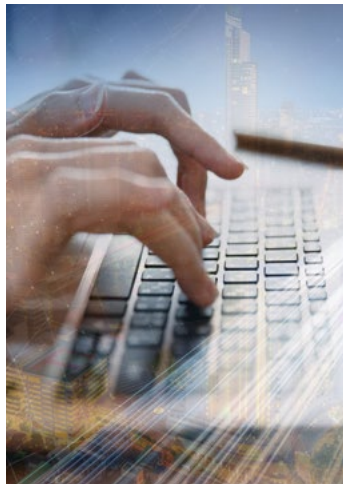


advantages

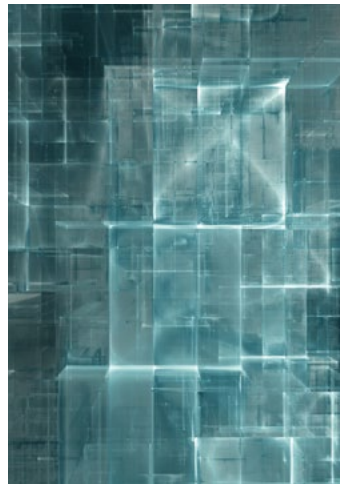
FERMAX



Easy to install and competitive kit format



Assistant that guides the installer through the process of creating their own configuration



Visual management of accesses via IP network with site map



Integrated fingerprint readers which are managed using the same software



Allows events to be registered in customisable formats

types of projects

RESIDENTIAL PROJECT



OFFICES



INDUSTRIES



PARKING



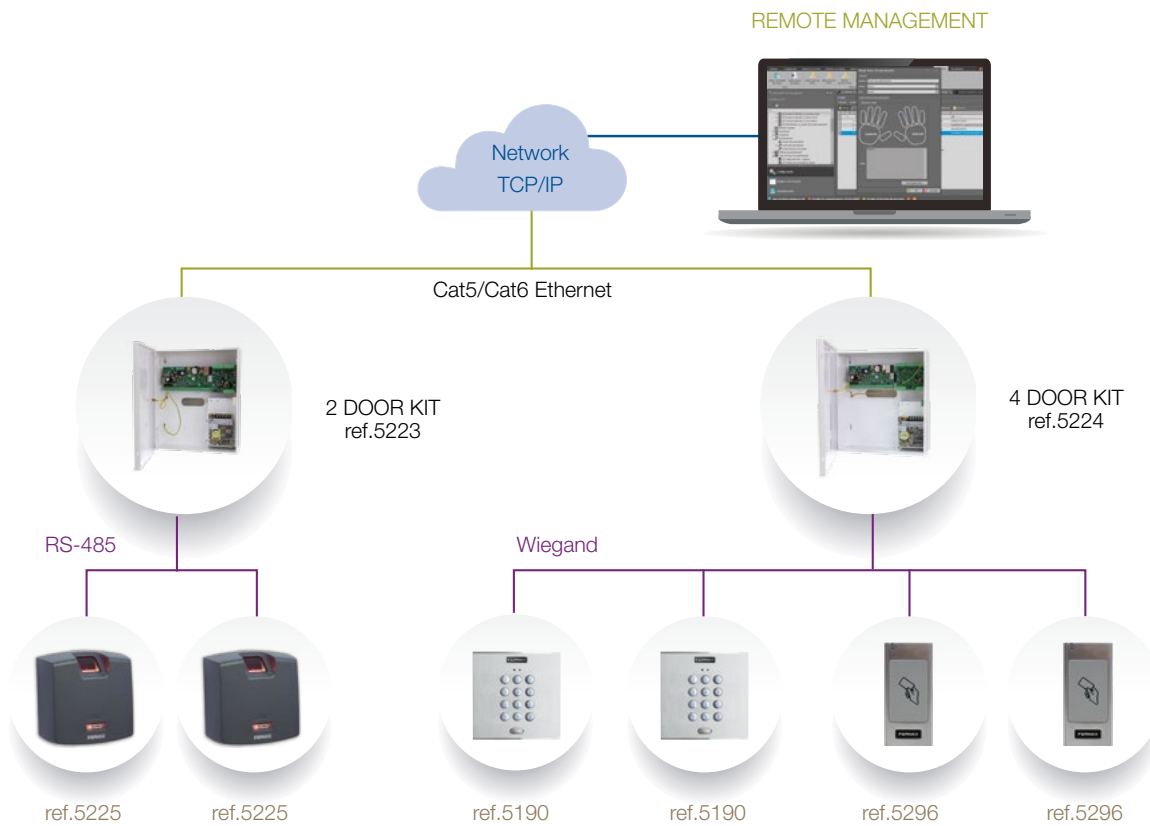
GYM



COMMERCIALS



installation



The system is based on IP controller units which can be installed at various network points in the same facility, with one controller unit per every two or four doors.

When the doors to be secured are in different buildings, or if there is a long distance between doors in the same building, more controller units can be added.

The controller units work with both Wiegand readers and AC-MAX fingerprint readers (bus RS-485).

The number of controllers can easily be expanded depending on the needs of each project. They are linked using an ethernet or network point.

Features



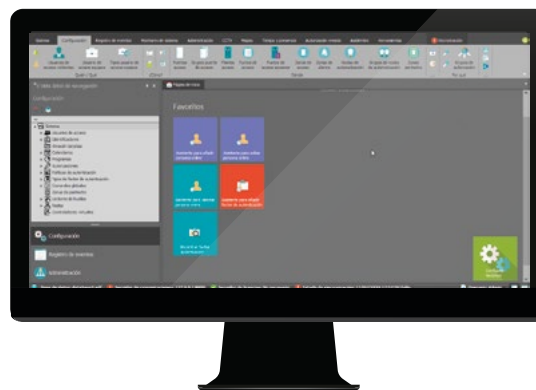
AC-MAX has
2 free softwares

AC-MAX ST, with all the functions required to cover complex and big projects.

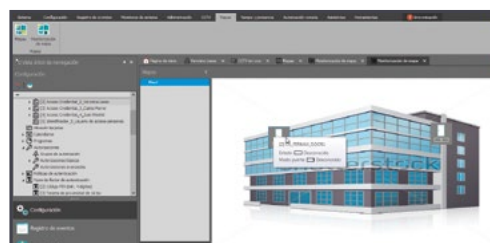
AC-MAX Lite (LT) is a simplified version which is recommended on small or medium projects (up to 20 doors) or medium complexity projects where it is not required a real time supervision of the system from a computer.

Languages: Spanish, English, Portuguese, French, German, Dutch.

Configuration wizard for the installer
(ST version)



Fingerprint enrolment integrated
on the software



Site map and online management
(ST version)

SOFTWARE FEATURES



CAPACITY	Lite (LT) 2.0	(ST) 2.0
Licenses required	NO	NO
No. of doors	no limit	no limit
No. of users	no limit	no limit
No. of central units	no limit	no limit
No. of relays	no limit	no limit
No. of sensors	no limit	no limit
No. of events	8.000.000	8.000.000
BASIC FUNCTIONS	Lite (LT) 2.0	(ST) 2.0
Configuration Wizard	NO	YES
Real time event monitoring	YES	YES
Reports	YES	YES
Built int finger print enrolment	YES	YES
Site Map	NO	YES
Software remote door opening	YES	YES
Local Antipassback	YES	YES
Different operator profiles	YES	YES
Access Zones	YES	YES
Occupancy limit	YES	YES
Occupancy count	YES	YES
List of persons in a zone	YES	YES
Alarm zones	YES	YES
Automations	YES	YES
Credential expiry date	YES	YES
Different credentials per user	YES	YES

ADVANCED FUNCTIONS	Lite (LT) 2.0	(ST) 2.0
Limited number of accesses per user	NO	NO
Global Antipassback	NO	YES
Perimetral zones	NO	YES
Client/Server installation	YES	YES
Multi Company partition	NO	YES, License required
Different projects managment	YES	YES
Internet remot management	YES	YES
Time & Attendance	Basic	Basic
Basic visit management	NO	YES
Design/Print prox cards	NO	YES
Advance Authorization	NO	YES
Authentication policies	YES	YES
Asset management	NO	YES
Email alerts	NO	YES
Fire Alarm inputs	NO	YES
INTEGRATION	Lite (LT) 2.0	(ST) 2.0
External Database	YES	YES
CCTV video stream reception	YES	YES
API	NO	YES, License required
Lift Control	NO	YES, License required

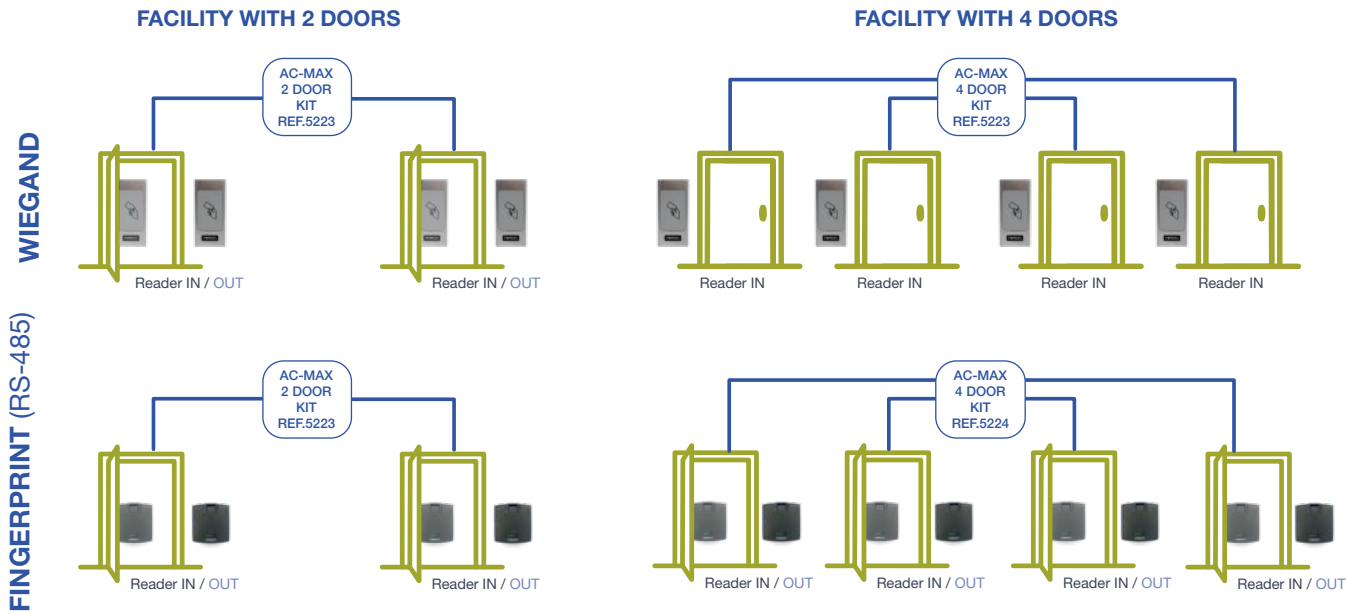
SYSTEM FEATURES

CAPACITY	
System	Centralised
Connectivity between central units	Native IP
Management connection	TCP/IP
Wiegand readers	Prox: City, Marine, Skyline, Resistant Keypad: City, Marine, Skyline, Resistant. RF receivers.
Fingerprint reader	Registration of users and fingerprints from the same software.
Max. number of users	Online: unlimited Offline: 8.192 / central unit
Number of doors (1 reader per door)	Unlimited
Max. number of networked controllers	Unlimited
Management of central unit events	8.000.000
Relays and sensors	Integrated into main controller card and expander card
Scalable and expandable	Yes
Software	Free Software

	REF.5223 2 DOOR KIT	REF.5224 4 DOOR KIT
No. of Doors	2	4
No. Max. Entry readers	2	4*
No. Max. Exit readers	2	4*

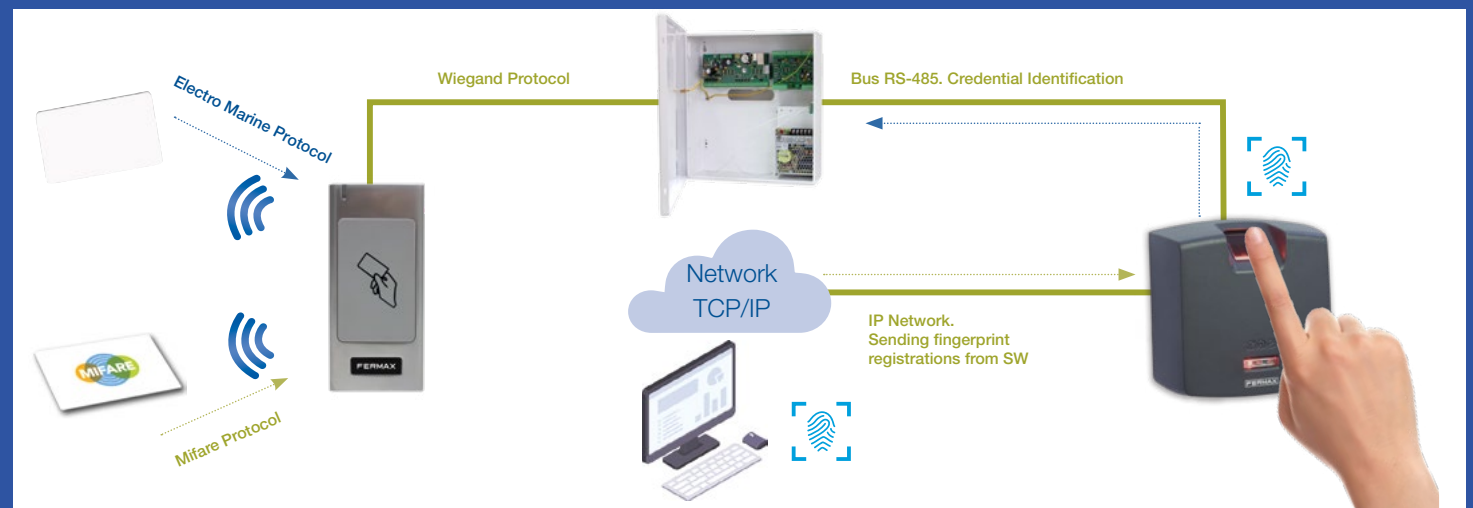
* In the 4 door KIT it is possible to connect up to 4 Wiegand readers or 8 fingerprint readers (4 entry and 4 exit).

configuration



NOTE: The fingerprint reader also needs to be connected to the IP network.

COMMUNICATION PROTOCOLS



REF. 5223
2 DOORS AC-MAX CONTROLLER KIT



Access control kit for 2 doors.

Includes metal box with power supply, an IP controller unit and 2 door expander.

Battery capacity: 12Vcc/7A

Dimensions: 295 (H) x 285 (W) x 90 (D) mm

Power supply: 2.5A

REF. 5224
4 DOORS AC-MAX CONTROLLER KIT



Access control kit for 4 doors.

Includes metal box with power supply, an IP controller unit and 4 door expander.

Battery capacity: 12Vcc/7A

Dimensions: 325 (H) x 305 (W) x 100 (D) mm

Power supply: 5A

REF. 5225
FPAC-MAX FINGERPRINT READER



The FPAC-MAX is a **biometric fingerprint reader** equipped with a high-quality optical sensor and an ISO/IEC 14443A and **MIFARE® proximity reader**. Users are recognised by comparing their fingerprint with the ones that are registered in the reader's memory (1:N mode) or with those that are registered on the MIFARE® card (1:1 mode). The reader can store up to 1.900 fingerprints.

Dimensions: 85 (H) x 85 (W) x 52 (D) mm

IP: 41

For projects with more than 4 doors, just connect additional kits to the same IP Local Area Network. All kits will be managed by the same software on the LAN.



ref.6958



ref.7461



ref.5472



ref.5296



ref.5190



ref.5191



ref.5192



ref.5293



ref.5266



ref.5259



ref.5231

READERS

MIFARE CLASSIC 13.56 MHz

- 6958** CITYLINE WG MIFARE/EM PROXIMITY READER
- 7461** SKYLINE WG MIFARE/EM PROXIMITY READER V
- 5296** RESISTANT PROXIMITY READER
(Also can read EM 125 KHz and HID ISOPROX II)

KEYPADS

Includes an adapter circuit for AC-MAX (Ref.5226)

- 5190** WIEGAND CITYLINE KEYPAD
- 5191** WIEGAND SKYLINE KEYPAD
- 5192** WIEGAND MARINE KEYPAD
- 5293** RESISTANT KEYPAD W/PROXIMITY
(Also can read EM 125 KHz and HID ISOPROX II)

NOTE: Max wiring distance to the controller:

- Readers ref.5293,5296,6958,7461 : 100m
- Readers ref.6992,7440,5472,5190,5191,5192: 10m

RF RECEIVER

- 5266** RF-WIEGAND RECEIVER 12 Vdc
RF receiver with a max reading range up to 100m. Can be interfaced with Wiegand 26 (4 wires from each receiver) to the controller. Dimensions 77x180x30mm.

- 5264** HF ANTENNA HANDS-FREE 1.5M
Surface installation. 12Vac/dc. Activates the handsfree identifier.

IDENTIFIERS

MIFARE CLASSIC 13,56 MHz

- 52740** MIFARE PROXIMITY KEYRING
- 52750** MIFARE PROXIMITY CARD

RF 868 MHz CONTROLLERS

Compatible with receivers ref.5266.

- 5259** RF KEYSINGLE-MINI EMITTER 2 PUSH
- 5231** RF KEYSINGLE-PLUS EMITTER 2 PUSH
- 5232** RF KEYSINGLE-PLUS EMITTER 4 PUSH
- 5261** RF KEYTRI PLUS2 REMOTE CONTROL
- 5273** HF IDENTIFIER HANDS-FREE
- 5265** HF WRISTBAND HANDS-FREE

*Proximity and RF Identifiers are not sequential so ID numbers are not correlative.



ref.5201



ref.5204



ref.5222



ref.5201



ref.5209

ACCESSORIES

- 5201 EXPANDER 8 INPUTS / 8 OUTPUTS (EXP8-IO)**
8 input / 8 output expander board. It allows to activate up to 8 relay outputs to automate functions or simultaneous door opening. It allows to detect up to 8 sensor inputs for alarms or door status. The circuit includes DIN rail mounting adapters. It is required an additional DIN rail surface/flush box (not included in the product).

- 5204 DESKTOP PROXIMITY READER AC-MAX (KEY3-USB)**
USB desktop reader that allows the enrolment of new user credential reading the MIFARE cards directly on the software. Therefore, it is not required to write the printed code on the prox. card. Includes the USB desktop cable and support.

- 1608 AC-MAX LICENSE DONGLE (KEY6-USB)**
Security dongle required to upload integration licenses on the SW. It is required to acquire additional integration licenses based on the number of accesses (ask for more information).

LIFT CONTROL

- 5222 LIFT CONTROL 8 FLOORS KIT**
1 x IP controller board
1 x 8 input / 8 output expander board Ref.5201
1 x built-in 8 floors license stored in local SD card Ref.5221
1 x PSU 5.4A
1 x DIN Rail metal case. (Can allocate additional 2 x Ref.5201 8 I/O)

- 5201 EXPANDER 8 INPUTS / 8 OUTPUTS (EXP8-IO)**
Board that provides 8 additional relays, to activate 8 additional floors. The LIFT CONTROL KIT already includes 1 board so can manage 8 floors. Up to 7 additional 8 I/O expanders can be connected and powered from LIFT CONTROL KIT.
Total number of relays in a single LIFT CONTROL KIT will be 64.

- 5221 LIFT CONTROL 8 FLOORS LICENSE EXTENSION**
Digital file to UPGRADE the Lift Control Kit with 8 additional floors.
The LIFT CONTROL KIT already includes 1 license for 8 floors.
NOTE: When ordering 2 or more 8 Floor Licenses extensions for a LIFT CONTROL KIT, 1 single file containing all the floors will be received.
Ref.5222 MAC address to be provided when ordering.

- 5209 LIFT CONTROL METAL ENCLOSURE**
Metal case to allocate additional Ref.5201 8 I/O expanders
Total amount of expanders that can be allocated in this box is 4 (additional 32 relays/floors)



www.fermax.com

