

powertank.co.uk



OVERVIEW

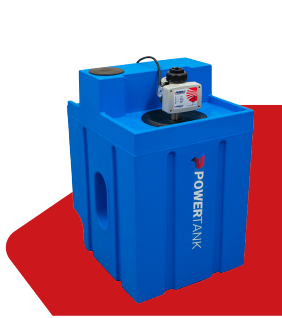
 **POWER TANK**
Water Boosting Systems

by Pedrollo Distribution

CONTENTS

About	4
Range Options	5
Compact - 125ltr	7
CAT5 - 10 or 38ltr	8
DG BLU - 200ltr	9
CAT5 Kiosk - 15ltr	10
Snug - 350ltr	11
Simplicity	12
Slimline - 200, 350 & 450ltr	13
Coffin - 200, 270, 340 & 450ltr	14
Rectangular - 300 & 500ltr	15
Utility - 500 & 750ltr	16
Utility - 650 & 1000ltr	17
Industrial	18
Bunded - 250 & 650ltr	20
Water Treatment	21
Optional Extras	24
Assist Tanks	25
Installation Guide	26

POWERTANK Water Boosting Systems



 **POWERTANK
COMPACT**
 125LTR



 **POWERTANK
CAT5**
 10 & 38LTR



 **POWERTANK
DG BLU**
 200LTR



 **POWERTANK
CAT5 KIOSK**
 15LTR



 **POWERTANK
SNUG**
 350LTR



 **POWERTANK
SIMPLICITY**
 200 - 450LTR



 **POWERTANK
SLIMLINE**
 200, 350 & 450LTR



 **POWERTANK
COFFIN**
 200, 270, 340 & 450LTR



 **POWERTANK
RECTANGULAR**
 300 & 500LTR



 **POWERTANK
UTILITY**
 500 & 750LTR



 **POWERTANK
UTILITY**
 650 & 1000LTR



 **POWERTANK
INDUSTRIAL**
 500 - 5000LTR



 **POWERTANK
BUNDED**
 250 & 650LTR



 **POWERTANK
UV SYSTEMS**
 34L/MIN & 70L/MIN



 **POWERTANK
SOFTENERS**
 8, 14 & 21LTR



 **POWERTANK
ANTI-SCALE &
ANTI-PFAS SYSTEMS**

ABOUT POWERTANK

› **Need to boost your water pressure?**

There are many reasons for experiencing low water pressure problems including high demand, location and shared supply. The Powertank range is a self-contained cold water booster system specifically designed for use in domestic, commercial, agricultural & industrial applications where existing water pressure and flow is insufficient to meet demand. The range caters for multiple space and storage capacity requirements.

› **Why do I need a tank and a pump?**

To increase water flow there must first be more water. If your mains supply is not meeting your requirements, then you need a break tank to store your own water supply ready for when you need it. This can then be pumped to your outlets on demand giving you a plentiful supply of water at the right pressure.

› **Can this be used with any type of hot water system?**

Powertanks are suitable for use with pressurised/unvented & combination boiler hot water systems and are not designed for use with unpressurised/vented /gravity fed systems where a cold water header tank already exists.

› **Why can't I just fit a pump onto the mains?**

Water Authority bylaws prevent a pump being directly connected to the mains supply, so when your mains water pressure needs a boost, a break tank must be incorporated into the system. There is an exemption for pumps 'up to' 12 ltr/min but this is not guaranteed and relies on your mains being capable of delivering this volume. To put this into context, a single shower typically requires between 9-15 ltr/min.

› **Will it be noisy?**

All pumps create noise, but by incorporating an ultra-quiet running submersible pump within a tank unit, the Powertank range is about as quiet as you can get. Typical dB of <65dB(A)

› **Volumes**

All stated volumes are usable water volumes.

› **Is it easy to install?**

Our all-in-one tank and pump unit is designed to remove the headache for installers. It is a packaged unit and therefore is fast and easy to install. See our Installation Guideline for step by step instructions.

› **Where am I going to put it?**

The Powertank range has been designed to provide the end user with a variety of options in terms of water storage and usage requirements as well as availability of space. Typical installation areas include garages, plant rooms, utility rooms and kitchens.

› **What is the difference between the fixed speed and the variable speed version?**

The fixed speed version has an automatic pump controller which provides the full performance of the pump on demand.

The variable speed version has an intelligent pump controller that will supply a smooth flow of water to every outlet by maintaining constant pressure throughout your property, speeding up and slowing down the pump to suit demand. This ensures efficient operation of the pump leading to reduced energy usage and a smoother user experience.

› **What size property will this supply?**

The Powertank range is scalable and additional capacity can be added for large properties or those with particularly poor incoming flow rates. We have designed the range to fit in all domestic and commercial properties (incoming flow rate and required usage must be taken into consideration). If you have a weak incoming water supply yet a high demand for water, you also have the option to link an additional 'assist tank' to ensure you have enough stored water to meet demand.

› **What if my tank runs out of water?**

The controller will turn off the pump if there is no water in the tank. It will automatically reset after a short delay allowing the water volume in the tank to recover. This pump protection feature ensures a long and happy life for the pump.



**Increased Water
Pressure & Flow**



Ease of Installation



Compact Design



Dry Run Protection



Quiet & Reliable



Marked Product

RANGE OPTIONS

CONTROLS OPTIONS

Fixed Speed

This is the most economical option and will transform the water pressure and flow in your property. This will deliver the full pressure of the pump at the in use flow rate (see performance table).

Variable Speed

The variable speed option allows you to choose your desired pressure, speeding up and slowing down to suit demand. Whatever you are doing, from washing up, watering the garden, having a shower or all 3 together the pressure will continue to be the same to give you a constant pressure at every outlet.



INCREASE PERFORMANCE

Variable - TWIN & TRIPLE Pump Option

For higher flow rates the Powertanks can be fitted with two or three pumps to meet the required duty. Twin & Triple pump sets are configured as duty assist with two or three pumps sharing the duty.

Twin pump options are available from 500ltr tank capacity and Triple pump options are available from 2000ltr tank capacity.

These operate with the same functionality as a traditional booster set.

Variable PLUS – More Powerful Pump Option

For certain applications a larger flow rate maybe required. The PLUS range can offer a much higher flow rate than the Standard Variable Speed unit and is a more cost-effective way of increasing the performance of the Powertank system without upgrading to a twin or triple pump system. This PLUS pump option is available on our larger tanks options.



RANGE PERFORMANCE

Pump Option	Power			Pressure	1 Bar	2 Bar	3 Bar	4 Bar	5 Bar
	kW	HP	A						
Fixed Speed	0.55	0.75	3.4	Q l/min	73	57	35	-	-
Variable Speed	0.75	1	6.3		80	80	80	68	50
Variable Speed (Compact Model)	0.55	0.75	5.2		80	80	68	42	-
Variable Speed PLUS	1.5	2	8.7		160	160	138	107	50
Variable Speed TWIN	1.5	2	12.6		160	160	160	136	100
Variable Speed TRIPLE	2.25	3	18.9		240	240	240	204	150
Variable Speed DG-BLU 3	0.75	1	7.5		110	95	79	60	40
Variable Speed DG-BLU 5	1.1	1.5	10		130	115	102	85	65

AIR GAPS EXPLAINED

Fluid Category 4 / Type AF

Suitable for applications in commercial heatings systems, bottle washing, commercial dish-washing machines, brewery and distillations plants.

CAT4

Fluid Category 5 / Type AB

Suitable for applications where increased backflow protection is required such as applications in food washing & packing stations, abattoirs, hygienic rooms, surgeries and laboratories. This is an optional upgrade. A CAT5 option replaces the standard overflow. We would recommend using a drip tray with this configuration.

CAT5



POWERTANK **COMPACT 125LTR**

The Powertank Compact has been specifically designed for smaller properties with low water pressure and flow and where space is at a premium i.e. apartments, cottages, townhouses. Fitting into the space of a standard kitchen unit, the Powertank Compact is a similar size to a washing machine so can be hidden away behind a cupboard door. The electronic controller automatically starts and stops the pump when a drop in pressure is sensed i.e. a tap is opened and closed.

KEY FEATURES

- Non-corrosive holding tank (WRAS approved material)
- Pre-fitted WRAS approved fill valve
- Integral overflow weir
- Minimal installation required
- Adjustable digital display flow controller (Variable Speed Option)
- Dry-run protection with auto restart (time delay)
- AB Air gap
- Suitable up to Fluid Category 5

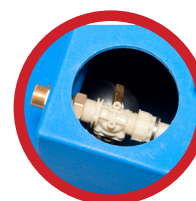


SYSTEM CONNECTIONS

Connection	Size
Inlet	½" BSP
Outlet	1" BSP
Overflow	40mm Waste pipe
Drain Off	1" BSP



Variable Speed Option



Fill Valve



Integral Overflow Weir

Pump Option	Power			Pressure	1 Bar	2 Bar	3 Bar	4 Bar	5 Bar
	kW	HP	A						
Fixed Speed	0.55	0.75	3.4	Q l/min	73	57	35	-	-
Variable Speed (Compact Model)	0.55	0.75	5.2		80	80	68	42	-

RANGE OPTIONS

Model	L (mm)	W (mm)	H (mm)	Weight (kg)
125ltr Compact Fixed Speed	560	490	850	27
125ltr Compact Variable Speed	560	490	870	33

Power Supply	240v 50Hz
Mains Cable	3 mtr fitted with 13 amp fuse mains plug
Access Cover	168mm Ø
Tank Weight Full	1ltr = 1 kg plus weight of empty tank



Please note that we have a policy of continuous product development and specifications may change from those shown.

POWERTANK **CAT5 10 OR 38LTR**

The Powertank CAT 5 provides backflow protection for fluid category 5 risks. Our system includes a type AB air-gap and is available with either a 10ltr or 38ltr tank. We supply this tank with a self-priming jet pump to ensure smooth operation. The electronic controller automatically starts and stops the pump when a drop in pressure is sensed i.e. a tap is opened and closed.

KEY FEATURES

- Non-corrosive holding tank
- Pre-fitted WRAS approved fill valve
- Integral screened overflow weir
- Minimal installation requirement
- Dry-run protection with auto restart (time delay)
- Self-priming Jet Pump
- AB Air gap
- Suitable up to Fluid Category 5

* Powertank Compact also suitable for Fluid Category 5



SYSTEM CONNECTIONS

Connection	Size
Inlet	¾" BSP
Outlet	1" BSP
Overflow	40mm Waste pipe

Pump Option	Power			Pressure	1 Bar	2 Bar	3 Bar	4 Bar	5 Bar
	kW	HP	A						
JCRm1C	0.37	0.5	3.4	Q l/min	60	25	5	-	-

RANGE OPTIONS

Model	L (mm)	W (mm)	H (mm)	Weight (kg)
10ltr CAT 5 Fixed Speed	500	300	670	14
38ltr CAT 5 Fixed Speed	500	300	920	20

Power Supply	240v 50Hz
Mains Cable	3 mtr fitted with 13 amp fuse mains plug
Pump	JCRm1C
Tank Weight Full	1ltr = 1 kg plus weight of empty tank



POWERTANK **DG BLU 3 & DG BLU 5 200LTR**

The Powertank DG BLU systems are variable speed pump and tank units designed with the consumer in mind. A simple push button interface with LED display provides 2 options; '+' to increase pressure and '-' to decrease pressure making it very difficult to hinder the operation of the unit. Like all the other Powertanks in the range it automatically starts and stops the pump when a drop in pressure is sensed i.e a tap is opened and closed.

KEY FEATURES

- Non-corrosive holding tank (WRAS approved material)
- Pre-fitted WRAS approved fill valve
- Minimal installation requirement
- Adjustable digital display flow controller
- Dry-run protection with auto restart (time delay)
- AF Air gap (AB Air gap Optional)
- Suitable up to Fluid Category 4 (CAT5 Option available)

SYSTEM CONNECTIONS

Connection	Size
Inlet	½" BSP
Outlet	1" BSP
Overflow	1 ¼" (32mm) female waste - pipe compression fitting
Drain Off	1" BSP



Intuitive User Interface



Rotating Inlet/Outlet Connector

Pump Option	Power			Pressure	1 Bar	2 Bar	3 Bar	4 Bar	5 Bar
	kW	HP	A						
Variable Speed DG BLU 3	0.75	1	7.5	Q l/min	110	95	79	60	40
Variable Speed DG BLU 5	1.1	1.5	10		130	115	102	85	65

RANGE OPTIONS

Model	L (mm)	W (mm)	H (mm)	Weight (kg)
200ltr Variable Speed DG BLU 3	512	570	1211	27
200ltr Variable Speed DG BLU 5	512	570	1211	33

Power Supply	240v 50Hz
Mains Cable	3 mtr fitted with 13 amp fuse mains plug
Access Cover	-
Tank Weight Full	1ltr = 1 kg plus weight of empty tank



CAT4

**MADE IN UK
BRITAIN CA**

POWERTANK **CAT5 KIOSK 15LTR**

NEW

Powertank Single pump kiosk CAT5 booster system. Ideal for bin stores, bib taps, irrigation, window cleaning or any CAT5 application. Suitable for wall or floor mounting, internally or externally.

KEY FEATURES

- Single pump kiosk CAT5 booster set
- Wall or floor mounting
- Housed in a robust IP54 GRP enclosure
- Full opening hinged lockable door
- All mechanical & electrical connections terminate external
- Optional frost heater
- AB Air gap

SYSTEM CONNECTIONS

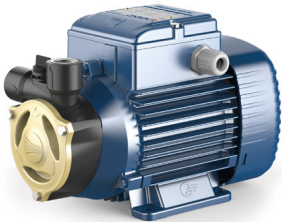
Connection	Size
Inlet	½" BSP
Outlet	½" BSP
Overflow	¾"
Electrical	20mm

Pump Option	Power			Pressure	1 Bar	2 Bar	3 Bar	4 Bar	5 Bar
	kW	HP	A						
Fixed Speed Pump	0.30	0.5	2.3	Q l/min	25	16	8	-	-

RANGE OPTIONS

Model	L (mm)	W (mm)	H (mm)	Weight (kg)
15ltr CAT 5 Kiosk Fixed Speed	320	528	872	32

Power Supply	240v 50Hz
Mains Cable	2 mtr fitted with 13 amp fuse mains plug
Pump	Peripheral Pump
Tank Weight Full	1ltr = 1 kg plus weight of empty tank
Ambient Temperature	40°C
Pumps	1
Tank	Polyethylene
Mounting	Wall or floor mounted
Pressure Rating	8 Bar
Frost heater (Optional)	Voltage: 230V AC



Full sized standard & high pressure peripheral pumps



While the Powertank Snug was originally designed with understairs applications in mind, it is suitable for many types of premises – from bungalows to B&Bs, with low water pressure and flow and where space is limited. This versatile system which comes in 1 to 2 pump options offers duty/assist and duty/standby. The system can also be adapted to include the Integrated UV board, which facilitates UV disinfection of the water supply.

The design of the unit enables the installer/end user to maximise available space, while inclusion of a removable pump on lid allows for easy installation, access and maintenance.

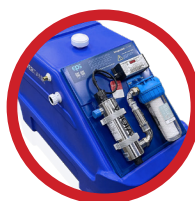
KEY FEATURES

- Non-corrosive holding tank (WRAS approved material)
- Pre-fitted WRAS approved fill valve
- Minimal installation requirement
- Adjustable digital display flow controller (Variable Speed Option)
- Dry-run protection with auto restart (time delay)
- AF Air gap (AB Air gap optional)
- Suitable up to Fluid Category 4
- Designed for understairs applications



SYSTEM CONNECTIONS

Connection	Size
Inlet	½" BSP
Outlet	1" BSP
Overflow	1 ¼" (32mm) female waste - pipe compression fitting
Drain Off	1" BSP



With optional UV System



Overflow - Inlet



Variable Speed Option



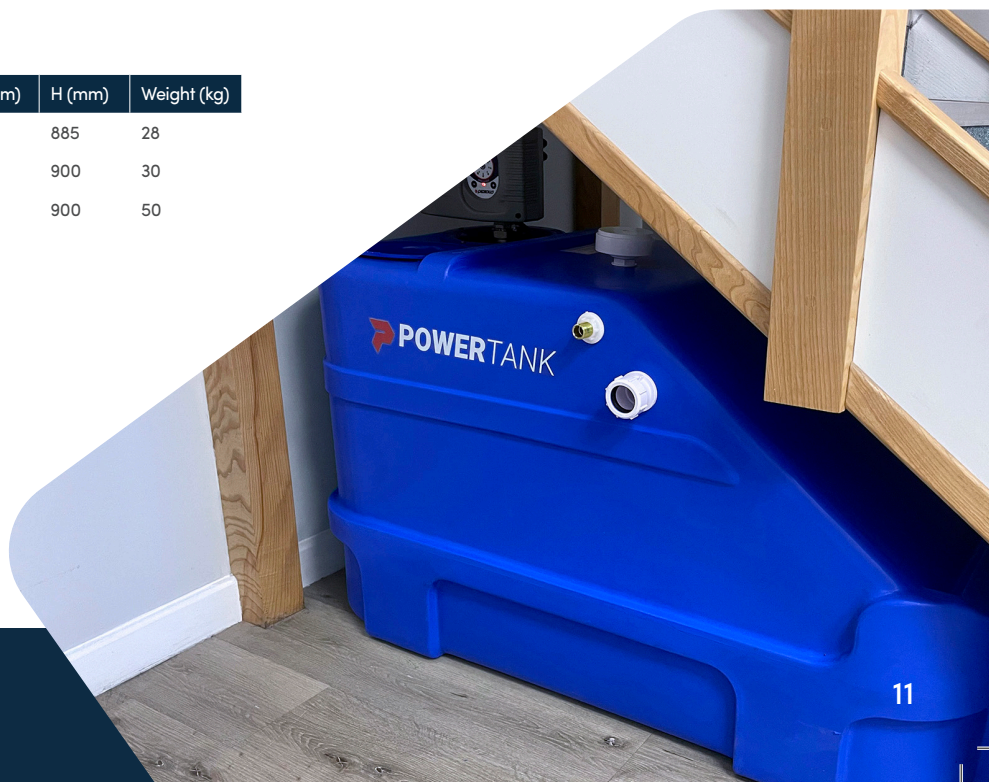
Twin Pump Option

Pump Option	Power			Pressure	1 Bar	2 Bar	3 Bar	4 Bar	5 Bar
	kW	HP	A						
Fixed Speed	0.55	0.75	3.4		73	57	35	-	-
Variable Speed	0.75	1	6.3	Q l/min	80	80	80	68	50
Variable Speed Twin	1.5	2	12.6		160	160	160	136	100

RANGE OPTIONS

Model	L (mm)	W (mm)	H (mm)	Weight (kg)
350ltr Snug Fixed Speed	1200	590	885	28
350ltr Snug Variable Speed	1200	590	900	30
350ltr Snug Variable Speed Twin Pump	1200	590	900	50

Power Supply	240v 50Hz
Mains Cable	3 mtr fitted with 13 amp fuse mains plug
Access Cover	180mm
Tank Weight Full	1ltr = 1 kg plus weight of empty tank





The Simplicity range is designed as an entry level Powertank offering.

Our Simplicity Range is only available as a fixed speed option. The Simplicity range includes: 200ltr & 350ltr Slimline, 500ltr Utility, 200ltr, 270ltr, 340ltr, and 450ltr Coffin tanks.

It is electronically controlled, starting and stopping the pump automatically when pressure drops below 1.5 Bar

Unlike the standard Fixed Speed Powertank the Simplicity range controller does not include an integrated 1ltr pressure vessel for reducing the number of pump start & stops and does not have a adjustable start pressure feature.

KEY FEATURES

- Non-corrosive holding tank (WRAS approved material)
- Pre-fitted WRAS approved fill valve
- Minimal installation requirement
- Built-in electronic start/stop
- Dry-run protection with auto restart (time delay)
- AF Air gap
- Suitable up to Fluid Category 4

SYSTEM CONNECTIONS

Connection	Size
Inlet	½" BSP
Outlet	1" BSP
Overflow	1 ¼" (32mm) female waste - pipe compression fitting
Drain Off	1" BSP

Pump Option	Power			Pressure	1 Bar	2 Bar	3 Bar	4 Bar	5 Bar
	kW	HP	A						
Fixed Speed	0.55	0.75	3.4	Q l/min	73	57	35	-	-

RANGE OPTIONS

Model	L (mm)	W (mm)	H (mm)	Weight (kg)
200ltr Slimline Simplicity Fixed Speed	584	584	1190	26
350ltr Slimline Simplicity Fixed Speed	584	584	1656	29
500ltr Utility Simplicity Fixed Speed	760	760	1393	34
200ltr Coffin Simplicity Fixed Speed	1106	475	770	30
270ltr Coffin Simplicity Fixed Speed	1571	475	751	32
340ltr Coffin Simplicity Fixed Speed	1571	475	980	34
450ltr Coffin Simplicity Fixed Speed	1765	580	846	36

Power Supply	240v 50Hz
Mains Cable	3 mtr fitted with 13 amp fuse mains plug
Access Cover	190mm (S) 300x450mm (C) 285mm (U)
Tank Weight Full	1ltr = 1 kg plus weight of empty tank



Fixed Speed Only



Overflow - Inlet



POWERTANK **SLIMLINE 200, 350 & 450LTR**

The Powertank Slimline range is designed to fit through a standard doorway while occupying minimal floor space. This makes it an ideal choice for both new and existing properties, reducing access challenges. It can be conveniently installed in utility rooms or garages.

The slimline range is ideal for 3 – 5 bedroom houses, with poor water pressure and flow, and where floor space is limited. It is electronically controlled, starting and stopping the pump automatically when an outlet is opened and closed.

KEY FEATURES

- Non-corrosive holding tank (WRAS approved material)
- Pre-fitted WRAS approved fill valve
- Minimal installation requirement
- Adjustable digital display flow controller (Variable Speed Option)
- Dry-run protection with auto restart (time delay)
- AF Air gap (AB Air gap optional)
- Suitable up to Fluid Category 4 (CAT 5 Optional)



SYSTEM CONNECTIONS

Connection	Size
Inlet	½" BSP
Outlet	1" BSP
Overflow	1 ¼" (32mm) female waste - pipe compression fitting
Drain Off	1" BSP



Variable Speed Option



Overflow - Inlet



AB Air Gap Option
CAT5

Pump Option	Power			Pressure	1 Bar	2 Bar	3 Bar	4 Bar	5 Bar
	kW	HP	A						
Fixed Speed	0.55	0.75	3.4	Q l/min	73	57	35	-	-
Variable Speed	0.75	1	6.3		80	80	80	68	50

RANGE OPTIONS

Model	L (mm)	W (mm)	H (mm)	Weight (kg)
200ltr Slimline Fixed Speed	584	584	1190	26
200ltr Slimline Variable Speed	584	584	1210	32
350ltr Slimline Fixed Speed	584	584	1656	29
350ltr Slimline Variable Speed	584	584	1676	35
450ltr Slimline Fixed Speed	584	584	2100	33
450ltr Slimline Variable Speed	584	584	2120	39

Power Supply	240v 50Hz
Mains Cable	3 mtr fitted with 13 amp fuse mains plug
Access Cover	190mm Ø
Tank Weight Full	1ltr = 1 kg plus weight of empty tank



POWERTANK **COFFIN 200, 270, 340 & 450LTR**

The Powertank Coffin range is designed for domestic and light commercial use where there is low mains water pressure and where pressure fluctuates.

It is electronically controlled, starting and stopping the pump automatically when an outlet is opened and closed. The Powertank Coffin tanks are designed for areas where height restrictions and access are an issue.

KEY FEATURES

- Non-corrosive holding tank (WRAS approved material)
- Pre-fitted WRAS approved fill valve
- Minimal installation requirement
- Adjustable digital display flow controller (Variable Speed Option)
- Dry-run protection with auto restart (time delay)
- AF Air gap
- Suitable up to Fluid Category 4

SYSTEM CONNECTIONS

Connection	Size
Inlet	½" BSP
Outlet	1" BSP
Overflow	1 ¼" (32mm) female waste - pipe compression fitting
Drain Off	1" BSP



Variable Speed Option Overflow - Inlet

Pump Option	Power			Pressure	1 Bar	2 Bar	3 Bar	4 Bar	5 Bar
	kW	HP	A						
Fixed Speed	0.55	0.75	3.4	Q l/min	73	57	35	-	-
Variable Speed	0.75	1	6.3		80	80	80	68	50

RANGE OPTIONS

Model	L (mm)	W (mm)	H (mm)	H (mm) Tank Only	Weight (kg)
200ltr Coffin Fixed Speed	1106	475	770	540	30
200ltr Coffin Variable Speed	1106	475	790	540	37
270ltr Coffin Fixed Speed	1571	475	751	521	32
270ltr Coffin Variable Speed	1571	475	771	521	39
340ltr Coffin Fixed Speed	1571	475	980	750	34
340ltr Coffin Variable Speed	1571	475	1000	750	40
450ltr Coffin Fixed Speed	1765	580	846	616	36
450ltr Coffin Variable Speed	1765	580	866	616	42

Power Supply	240v 50Hz
Mains Cable	3 mtr fitted with 13 amp fuse mains plug
Access Cover	300mm X 450mm
Tank Weight Full	1ltr = 1 kg plus weight of empty tank



POWERTANK **RECTANGULAR 300 & 500LTR**



The Powertank Rectangular range is designed for domestic and light commercial use where there is low mains water pressure and where pressure fluctuates.

It is electronically controlled, starting and stopping the pump automatically when an outlet is opened and closed. The 300ltr & 500ltr tanks are designed for areas where the floor space is not restricted but where height restrictions are an issue.

KEY FEATURES

- Non-corrosive holding tank (WRAS approved material)
- Pre-fitted WRAS approved fill valve
- Minimal installation requirement
- Adjustable digital display flow controller (Variable Speed Option)
- Dry-run protection with auto restart (time delay)
- AF Air gap (AB Air gap optional)
- Suitable up to Fluid Category 4 (CAT 5 Optional)



SYSTEM CONNECTIONS

Connection	Size
Inlet	½" BSP
Outlet	1" BSP
Overflow	1 ¼" (32mm) female waste - pipe compression fitting
Drain Off	1" BSP



Variable Speed Option



Overflow - Inlet



Twin Pump Option

Pump Option	Power			Pressure	1 Bar	2 Bar	3 Bar	4 Bar	5 Bar
	kW	HP	A						
Fixed Speed	0.55	0.75	3.4		73	57	35	-	-
Variable Speed	0.75	1	6.3	Q l/min	80	80	80	68	50
Variable Speed Twin	1.5	2	12.6		160	160	160	136	100

RANGE OPTIONS

Model	L (mm)	W (mm)	H (mm)	Weight (kg)
300ltr Rectangular Fixed Speed	1045	665	940	34
300ltr Rectangular Variable Speed	1045	665	960	39
500ltr Rectangular Fixed Speed	1190	727	1030	40
500ltr Rectangular Variable Speed	1190	727	1050	45
500ltr Rectangular Variable Speed Twin Pump	1190	727	1050	65

Power Supply	240v 50Hz
Mains Cable	3 mtr fitted with 13 amp fuse mains plug
Access Cover	300ltr = 190mm Ø 500ltr = 285mm Ø
Tank Weight Full	1ltr = 1 kg plus weight of empty tank



Please note that we have a policy of continuous product development and specifications may change from those shown.

POWERTANK **UTILITY 500 & 750LTR**



The Powertank Utility range is designed for domestic and light commercial use where there is low mains water pressure and where pressure fluctuates.

It is electronically controlled, starting and stopping the pump automatically when an outlet is opened and closed. The Utility range is designed for areas where the floor space is not restricted. This range caters for a wider variation of tank options to suit a wider range of applications.

KEY FEATURES

- Non-corrosive holding tank (WRAS approved material)
- Pre-fitted WRAS approved fill valve
- Minimal installation requirement
- Dry-run protection with auto restart (time delay)
- Adjustable digital display flow controller (Variable Speed Option)
- AF Air gap (AB Air gap optional)
- Suitable up to Fluid Category 4 (CAT 5 Optional)



SYSTEM CONNECTIONS

Connection	Size
Inlet	½" BSP (¾" Optional)
Outlet	1" BSP
Overflow	1 ¼" (32mm) female waste - pipe compression fitting
Drain Off	1" BSP



Variable Speed Option

Overflow - Inlet

Twin Pump Option

AB Air Gap Option
CAT5

Pump Option	Power			Pressure	1 Bar	2 Bar	3 Bar	4 Bar	5 Bar
	kW	HP	A						
Fixed Speed	0.55	0.75	3.4	Q l/min	73	57	35	-	-
Variable Speed	0.75	1	6.3		80	80	80	68	50
Variable Speed Plus	1.5	2	8.7		160	160	138	107	50
Variable Speed Twin	1.5	2	12.6		160	160	160	136	100

RANGE OPTIONS

Model	L (mm)	W (mm)	H (mm)	Weight (kg)
500ltr Utility Fixed Speed	760	760	1393	34
500ltr Utility Variable Speed	760	760	1413	40
500ltr Utility Variable Speed Plus	760	760	1413	42
500ltr Utility Variable Speed Twin Pump	760	760	1413	60
750ltr Utility Fixed Speed	760	760	2113	49
750ltr Utility Variable Speed	760	760	2133	55
750ltr Utility Variable Speed Plus	760	760	2133	57
750ltr Utility Variable Speed Twin Pump	760	760	2133	75

Power Supply	240v 50Hz
Mains Cable	3 mtr fitted with 13 amp fuse mains plug
Access Cover	285mm Ø
Tank Weight Full	1ltr = 1 kg plus weight of empty tank



POWERTANK **UTILITY 650 & 1000LTR**



The Powertank Utility range is designed for commercial use on a larger scale where there is low mains water pressure and where pressure fluctuates.

It is electronically controlled, starting and stopping the pump automatically when an outlet is opened and closed. The Utility range is designed for areas where the floor space is not restricted. This range caters for a wider variation of tank options to suit a wider range of applications.

KEY FEATURES

- Non-corrosive holding tank (WRAS approved material)
- Pre-fitted WRAS approved fill valve
- Minimal installation requirement
- Adjustable digital display flow controller (Variable Speed Option)
- Dry-run protection with auto restart (time delay)
- AF Air gap (AB Air gap optional)
- Suitable up to Fluid Category 4 (CAT 5 Optional)



SYSTEM CONNECTIONS

Connection	Size
Inlet	½" BSP (¾" Optional)
Outlet	1" BSP
Overflow	1 ¼" (32mm) female waste - pipe compression fitting
Drain Off	1" BSP



Variable Speed Option



Overflow - Inlet



Twin Pump Option



AB Air Gap Option
CAT5

Pump Option	Power			Pressure	1 Bar	2 Bar	3 Bar	4 Bar	5 Bar
	kW	HP	A						
Fixed Speed	0.55	0.75	3.4	Q l/min	73	57	35	-	-
Variable Speed	0.75	1	6.3		80	80	80	68	50
Variable Speed Plus	1.5	2	8.7		160	160	138	107	50
Variable Speed Twin	1.5	2	12.6		160	160	160	136	100

RANGE OPTIONS

Model	L (mm)	W (mm)	H (mm)	Weight (kg)
650ltr Utility Fixed Speed	1083	669	1283	54
650ltr Utility Variable Speed	1083	669	1303	60
1000ltr Utility Fixed Speed	1688	563	1640	74
1000ltr Utility Variable Speed	1688	563	1660	80
1000ltr Utility Variable Speed Plus	1688	563	1660	82
1000ltr Utility Variable Speed Twin Pump	1688	563	1660	100

Power Supply	240v 50Hz
Mains Cable	3 mtr fitted with 13 amp fuse mains plug
Access Cover	285mm Ø
Tank Weight Full	1ltr = 1 kg plus weight of empty tank



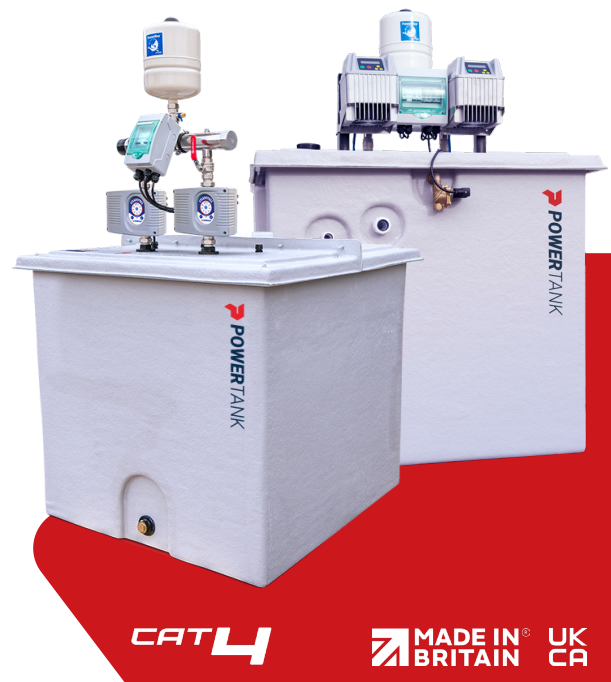
Please note that we have a policy of continuous product development and specifications may change from those shown.

The Powertank Industrial range is designed to deliver water to commercial and industrial properties where the existing supply fails to meet demand.

The tank is WRAS approved and manufactured with insulating GRP materials and has a removable lid making it ideal for plant rooms. Fitted as standard with a variable speed controller and AF air gap. These tanks are fitted out individually in-house and are fully customisable.

KEY FEATURES

- WRAS approved GRP Tank
- Fully encapsulated insulation to sides and lid
- Close fitting and removable lid
- Screened vent and screened overflow unit
- BMS connections
- Low-level indicator
- AF Air GAP Standard (AB Air GAP Optional)
- Suitable for Fluid Category 4 (CAT5 Optional)



SYSTEM CONNECTIONS

Connection	Size
Inlet	¾" BSP
Outlet	1" Single - 2" Twin - 2" Triple
Overflow	1 ¼" (32mm) female waste - pipe compression fitting
Warning Pipe	¾" BSP

* Larger Inlet Sizes Available On Request

* 3 Phase Available On Request

Mains Power Connection

Variable	3m x 1mm ² 3 core cable fitted with 13 amp fuse main plug
Variable Plus	3m x 1mm ² 3 core cable fitted with 13 amp fuse main plug
Variable Twin	MCB box with connections for input/output
Variable Triple	MCB box with connections for input/output



Inlet - Overflow

Pump Option	Power			Pressure	1 Bar	2 Bar	3 Bar	4 Bar	5 Bar
	kW	HP	A						
Variable Speed	0.75	1	6.3	Q l/min	80	80	80	68	50
Variable Speed Plus	1.5	2	8.7		160	160	138	107	50
Variable Speed Twin	1.5	2	12.6		160	160	160	136	100
Variable Speed Triple	2.25	3	18.9		240	240	240	204	150

RANGE OPTIONS

Model	L (mm)	W (mm)	H (mm)
500ltr Industrial	1180mm	680mm	1036mm
1000ltr Industrial	1180mm	1180mm	1093mm
1500ltr Industrial	1180mm	1180mm	1593mm
2000ltr Industrial	2202mm	1202mm	1093mm
2500ltr Industrial	2202mm	1202mm	1343mm
3000ltr Industrial	3202mm	1202mm	1093mm
4000ltr Industrial	2192mm	2192mm	1093mm
5000ltr Industrial	2692mm	2192mm	1093mm

* Industrial dimensions for tank only

* Larger Tank Sizes Available On Request



INDUSTRIAL OPTIONS

Variable Speed Controls as Standard

The variable speed control allows you to choose your desired pressure, speeding up and slowing down to suit demand. Our smart control option also features Bluetooth connectivity for control through a smartphone and app. Contact our sales team for more information.

Variable - TWIN & TRIPLE Pump Option

For higher flow rates the Industrial Powertanks can be fitted with two or three pumps to meet the required duty. Twin & Triple pump sets are configured as duty assist with two or three pumps sharing the duty.

Twin pump options are available from 500ltr tank capacity and Triple pump options are available from 5000ltr tank capacity.

These operate with the same functionality as a traditional booster set.



INCREASE PERFORMANCE

Variable PLUS – More Powerful Pump Option

Tank Options



Split Tank Options

For applications where access is restricted.



CAT5 AB Air Gap

Suitable for applications where increased backflow protection is required such as applications in food washing & packing stations, abattoirs, hygienic rooms, surgeries and laboratories.

CAT5



Larger Tanks

In addition to our standard tank capacities we can supply larger tank sizes in excess of 5000ltrs.



Plant Rooms

Plant room systems are available for use in large commercial or industrial applications and can be a cost-effective and economical way of protecting and housing booster pump sets, water storage tanks as well as water treatment equipment.



POWERTANK **BUNDED 250 & 650LTR**



The Powertank Bunded range is designed for commercial use where there is low mains water pressure and where pressure fluctuates. Every Powertank Bunded tank benefits from a 'tank within a tank' bunded construction, with the outer tank able to maintain a minimum of 110% of the volume of the inner tank. The inner tank acts as the primary storage container, whilst the outer tank acts as a fail safe in the event of a spill.

It is electronically controlled, starting and stopping the pump automatically when an outlet is opened and closed. The Bunded range is designed for areas where the floor space is not restricted.

KEY FEATURES

- Non-corrosive holding tank (WRAS approved material)
- Pre-fitted WRAS approved fill valve
- Minimal installation requirement
- Built-in electronic start/stop
- Dry-run protection with auto restart (time delay)
- AF Air gap
- Suitable up to Fluid Category 4



SYSTEM CONNECTIONS

Connection	Size
Inlet	½" BSP
Outlet	1" BSP
Overflow	1 ¼" (32mm) female waste - pipe compression fitting
Drain Off	1" BSP



Variable Speed Option Overflow - Inlet

Pump Option	Power			Pressure	1 Bar	2 Bar	3 Bar	4 Bar	5 Bar
	kW	HP	A						
Fixed Speed	0.55	0.75	3.4	Q l/min	73	57	35	-	-
Variable Speed	0.75	1	6.3		80	80	80	68	50

RANGE OPTIONS

Model	L (mm)	W (mm)	H (mm)	Weight (kg)
250ltr Bundled Fixed Speed	760	760	1478	49
250ltr Bundled Variable Speed	760	760	1498	55
650ltr Bundled Fixed Speed	1200	752	1174	94
650ltr Bundled Variable Speed	1200	752	1394	100

Power Supply	240v 50Hz
Mains Cable	3 mtr fitted with 13 amp fuse mains plug
Access Cover	Internal 190mm, External 285mm
Tank Weight Full	1ltr = 1 kg plus weight of empty tank



Powertank Integrated UV Disinfection Systems

We offer a complete disinfected water boosting package by combining an Integrated UV system with our Powertanks. This ensures not only that you increase your water pressure and flow but also the quality of water in your system.

The UV boosted system is available with any standard single pump Powertank. Higher flow capacity UV systems are also available for use with Twin, Triple & Industrial Powertanks. For more information please contact us.



STAGE 1: FINE SEDIMENT REMOVAL

Stage 1 is a 5 micron sediment filter cartridge for removing dirt, sediment, debris and absorbing compounds from the water to prevent them shielding bacteria for the UV light.

STAGE 2: ULTRA VIOLET DISINFECTION UNIT

Stage 2 is a Viqua UV disinfection system for the purposes of inactivation of bacteria and viruses in the incoming water supply. This UV system has an integral countdown timer to indicate when the UV lamp needs to be replaced. UV lamps degrade over time and must be replaced every 12 months.

BENEFITS TO UV DISINFECTION

- Equipped to inactivate chlorine-resistant parasites such as Cryptosporidium and Giardia, harmful bacteria like E.Coli, and viruses not visible to the naked eye
- Specially designed and tested Sterilume™-EX lamps provide consistent and reliable ultraviolet output over the entire life of the lamp (9000 hours) to ensure continuous purification. **Always use Viqua genuine replacement lamps and sleeves**
- The system is simple to maintain and service allowing for easy lamp replacement
- Built with a durable stainless steel chamber to prolong life and eliminate ultraviolet light degradation
- The controller visually displays the remaining lamp life and will go into alarm if the lamp fails. Monitored systems are equipped with a UV sensor which provides a continuous readout of UV intensity
- The controller has a sealed case to prevent damage from accidental water intrusion and is fully CSA and CE compliant
- Monitored systems allow for the installation of an optional solenoid valve which will stop the flow of water through the chamber should the UV performance fall below a safe level

TECHNICAL DATA								
Model	Stock Code	Height (cm)	Width (cm)	Depth (cm)	Max Pressure	*Max Flow Rate @ 16mj/cm ²	*Max Flow rate @ 30mj/cm ²	Inlet / Outlet
36 l/min system	3203330	60	48	18	6 Bar	60 l/min	33 l/min	1" BSP
68 l/min system	3203340	75	55	18	6 Bar	130 l/min	70 l/min	1" BSP

REPLACEMENT COMPONENTS				
Model	5µ Filter Stock Code	UV Lamp Stock Code	UV Sleeve Stock Code	Ballast/Timer Stock Code
36 l/min system	3204060	3203410	3203520	3203620
68 l/min System	3204100	3203440	3203550	3203620

Cabinet Water Softener Range

The AquaSilk range – including the **Mini**, **Midi** and **Maxi** models – offers an efficient solution designed to provide your home with consistently soft water while helping to protect your appliances, plumbing and skin from the effects of limescale. Each model in the range combines compact, slim design with high performance, offering quiet operation, low salt consumption and user-friendly features.

AquaSilk softeners deliver long-term reliability and noticeable everyday benefits – from softer laundry and shinier surfaces to improved efficiency of appliances which require water.

AquaSilk

FEATURES



Vacation
Mode



2yr Battery
Back-Up



Up Flow
Regeneration



Optimal Salt
Consumption



Ultra-Compact
Slim Design



Built-in Brine
Well Kit



	AquaSilk Mini	AquaSilk Midi	AquaSilk Maxi
Tank size (inch)	8x15	8x24	8x35
Resin Quantity (L)	8	14	21
Salt storage capacity	15	29	46
Operating flow rate (l/min)	15	21	28
Water supply	Municipal or pre-treated well water		
Operating pressure	2-6 Bar		
Water temperature	1-39°C		
Plumbing connections	3/4		
Electrical requirement	Input 100V-240V AC 50/60Hz Output 12V DC 1.0A		
Unit size, mm (HxWxD)	550x230x420	780x230x420	1056x230x420

WHICH SIZE SOFTENER WOULD I NEED?



AquaSilk Mini 8L - 3206040

- Fits neatly under a sink, ideal for homes with limited space
- Suitable for smaller households or single bathrooms

AquaSilk Midi 14L - 3206050

- Designed for larger families or higher daily water usage
- Balances capacity with space efficiency

AquaSilk Maxi 21L - 3206060

- Ideal for homes with multiple bathrooms
- Provides extended capacity between refills



Anti-Scale Systems

Hard water contains minerals that can cause limescale build-up in your appliances, and on surfaces. The media in ScaleArmor™ stops the growth of calcium, and magnesium carbonate crystals in water.

This helps domestic and commercial appliances such as washing machines, dishwashers, boilers, and other water systems stay efficient and less likely to break down due to internal limescale build-up.

The media is effective, and long-lasting due to its patented special design providing anti-scale protection but leaving your water drinkable.

Available as three unique systems the POP, BLUES and the fully certified ROCK range.



Whole house scale reduction system.



Certified system for the whole house.



Anti-Scale & Anti-Corrosion combined. Reduction of sediment



Model	Stock Code	Connexion Size Inch	Media Replacement	Flow Rate l/min
POP10 ScaleArmor System 1 OT	3205330	1	1-Year	25
POP20 ScaleArmor System 1 OT	3205340	1	1-Year	38
ROCK20 ScaleArmor System 1 OT	3205300	1	2-Years	37
BLUES10 ScaleArmor System 1 IN 5mcr	3205370	1	6-Months	21

PFAS Armor - Forever Chemical Filter Systems

PFAS and PFOA, more commonly known as forever chemicals are a vast group of over 14,000 synthetic chemicals commonly used in industrial and consumer products due to their resistance to heat, water, and oil.

PFAS ARMOR provides 95% or greater reduction in PFAS/PFOA when tested with 1,5 ug/l in influent water containing PFAS/PFOA. These filters also reduce the level of sediment and chlorine whilst improving the taste and odour of the water.

The filtration unit can be installed at the point of entry to accommodate flow rates of up to **1800 l/h. (30 l/min)**

Model	Stock Code	Micron μ	Flow Rate l/min	Length Inch
PFAS Armor 20" Big SX Complete System	3205700	1	30	20



POWERTANK **OPTIONAL EXTRAS**



Drip Tray

- Range available: Slimline, Utility Coffin, Rectangular.
- 1" overflow connection



Splash Tray (Slimline & Utility)

- Suitable for: 200ltr 300ltr, 500ltr & 750ltr



UV Filtration

- Available as 36 l/min and 68 l/min systems for Fixed or Variable speed Powertanks
- Integrated Ultraviolet disinfection
- Includes 5 micron pre-filtration
- 1" Connections



Insulated Jackets

- Available for Slimline, Utility, & Coffin range
- 80mm insulation
- Reduce dB/vibration levels
- Easy to install
- Extra protection for extreme weather conditions



Water Softeners

- Water Softener systems for hard water areas
- Removes high levels of calcium and magnesium
- 8, 14 & 21ltr cabinet systems
- Simplex & Duplex systems available for larger applications



Reverse Osmosis Systems

- High quality safe drinking water
- Home appliances (kettle, iron, steam cooker, air humidifier etc.) will be protected from scale
- 4 or 5 stage systems
- Pumped or Non-Pumped options



Anti-Scale Systems

- Reduce scale build up
- Easy to install
- Minimal maintenance
- 3 unique products types
- Whole house systems



PFAS Systems

- Reduce PFAS and PFOA chemicals
- Filters and improves water quality
- Easy to install
- Minimal maintenance
- Whole house system



Drinking Water Filters

- APLOS Clear is a space-saving DIY solution for enhancing drinking water quality
- Plug & play, includes everything needed for easy, under sink installation
- 2-in-1 compound filter; 0.5 micron carbon block and a 5 micron sediment cotton cartridge



Anti-Vibration Mat

- Improvement of impact sound
- Reduce dB/vibration levels
- Easy to install
- Simple processing - cutting, drilling
- Various sizes available for each model



Wall Bracket Support for Pressure Vessel

- Adjustable arm length
- 1" connection

The Powertank is a booster pump system with water storage capacity options ranging from 125ltr to 1000ltr. By simply adding an additional 'assist' tank, water storage capacity can be increased.

Compact

Model	Height	Length	Width
125ltr tank only	767mm	560mm	490mm



Slimline

Model	Height	Length	Width
200ltr tank only	1190mm	N/A	584mm
350ltr tank only	1656mm	N/A	584mm
450ltr tank only	2100mm	N/A	584mm



Utility

Model	Height	Length	Width
500ltr tank only	1393mm	N/A	760mm
650ltr tank only	1083mm	1083mm	669mm
750ltr tank only	2113mm	N/A	760mm
1000ltr tank only	1444mm	1688mm	563mm



Coffin

Model	Height	Length	Width
200ltr tank only	540mm	1106mm	475mm
270ltr tank only	521mm	1571mm	475mm
340ltr tank only	750mm	1571mm	475mm
450ltr tank only	616mm	1765mm	580mm



Rectangular

Model	Height	Length	Width
300ltr tank only	710mm	1045mm	665mm
500ltr tank only	800mm	1190mm	727mm



DG Blu

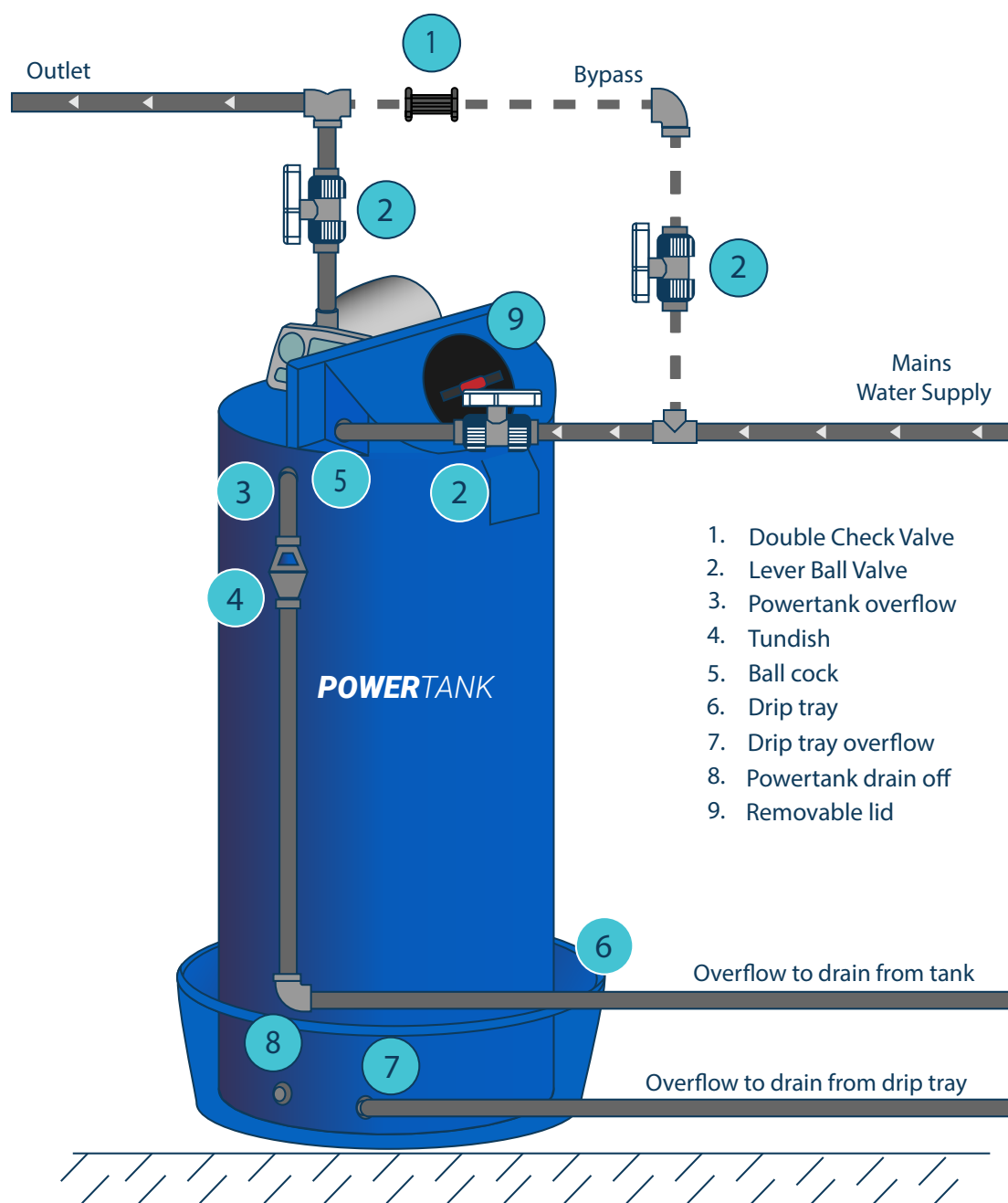
Model	Height	Length	Width
200ltr tank only	1200mm	510mm	570mm



POWERTANK **INSTALLATION GUIDE**

For full installation instructions please refer to the O&M Manual. Visit: powertank.co.uk/support

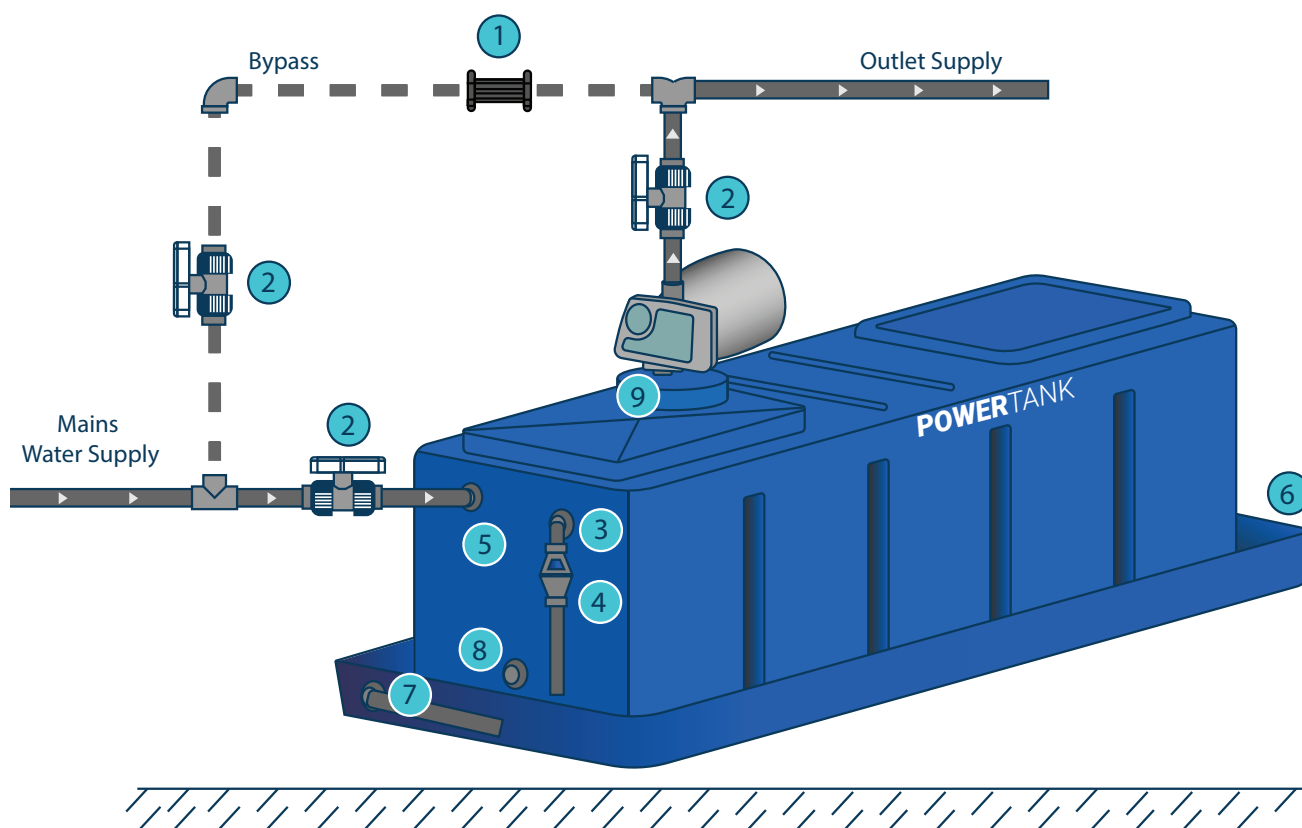
Slimline & Utility Ranges



* The use of a drip tray and insulation jacket are recommended with every installation

POWERTANK **INSTALLATION GUIDE**

For full installation instructions please refer to the O&M Manual. Visit: powertank.co.uk/support



1. Double Check Valve
2. Lever Ball Valve
3. Powertank overflow
4. Tundish
5. Ball cock
6. Drip tray
7. Drip tray overflow
8. Powertank drain off
9. Removable lid

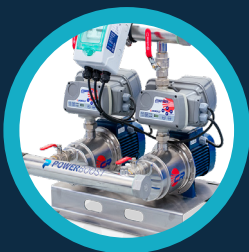
Other Products in the Water Boosting Range

Here at Pedrollo Distribution we know that everybody's requirements are different and the Powertank may not always be the correct option. We have a range of water boosting products that ensure we have a solution whatever your situation.

- › **Water Boosting for Unvented Systems (Where you already have a Tank)**
Our range of single pump and controllers can be fitted in any unvented system where you may already have a cold water tank, or you would like to source your own.
- › **Water Boosting for Gravity-Fed Systems (Vented)**
Our range of twin pumps and controllers can be fitted onto the hot and cold feeds to ensure equal pressure throughout your property.
- › **Water Boosting for Unvented Systems with Good Pressure and Low Flow**
Our accumulators are a low-cost option for properties with good pressure but low flow. These fill up with pressurised water from the mains when demand is low which provides a reserve of water when you need it.
- › **Bespoke Solutions – Built to Order**
If our standard offerings don't meet your requirements we have a comprehensive range of pumps, tanks and controllers which can be combined to suit your specific application.

POWERBOOST *Cold Water Booster Sets*

Pedrollo Distribution introduces the POWERBOOST range of clean water booster sets for the supply of water for domestic, commercial, agricultural, industrial and municipal markets.



FLOW



PRO



SOLO

power-boost.co.uk

Pedrollo Distribution Ltd
Crossfield Fort
Crossfield Road Industrial Estate
Lichfield
WS13 6RJ

t: 01543 415200
e: sales@pedrollo.co.uk
w: pedrolldistribution.co.uk



powertank.co.uk

Ref 01/09/25