



Instantor[®]

Superior Plumbing Products
for **Professional Plumbers**
Since 1926

10.25

Superior Plumbing Products

Superior Plumbing Products for Professional Plumbers Since 1926

Instantor is renowned for innovative, quality assured plumbing solutions and has been supplying the trade in Ireland for almost 100 years. It all began at St James Gate, Dublin with the creation of the first brass compression fitting. Today, Instantor are market leaders in press solutions, delivering reliable and easy to install product to the plumbing and heating industry.



Make the connection with us socially



Contents

Instantor Press System		Multilayer Pipe & Press Fittings	10
Instantor Press System		Leak Before Press Press Fittings	22
Instantor Copper Press - Water		Copper Press Fittings for Water Applications	40
Instantor Copper Press - Gas		Copper Press Fittings for Gas Applications	48
Instantor R-Press Fittings		Copper Press Fittings for ACR Applications	54
Instantor Stainless Steel Press		Stainless Steel Press Fittings & Tube for Water & Gas Applications	68
Instantor Tools		Press Tools, Jaws and Accessories	84
PAKTERMO by Instantor		Corrugated Stainless Steel Tube and Fittings	94
PAKTERMO by Instantor		Heat Pump Hoses and Push-Fit Fittings	100
Instantor Brass Compression Fittings		Brass Compression Fittings	106
Instantor Brass Compression Fittings		Lead Free Brass Compression Fittings	114
Elemex Immersions		Domestic Immersion Heaters	124
Immertec Immersions		Domestic Immersion Heaters and Replacement Stats	130

DESIGNED BY INSTALLERS, FOR INSTALLERS

It's very easy for manufacturers to create and release a new product. But, it's not much use if the product is the same as every other version available on the market. At Instantor, we're not here to reinvent the wheel – we're here to make it roll smoother. That's why we don't just create products; we partner with installers like you to build plumbing solutions that actually solve the everyday challenges you face.

You've probably heard us say, "designed by installers, for installers," but what does that really mean? It means we listen – properly listen – to what's happening on-site. You're the experts in the field, dealing with the same old problems day in, day out, and that's what drives our innovation. Need a tweak here? A new feature there? You help us figure out what's next. And when we're testing new prototypes, we're not only doing it at our testing lab – we're doing it where it counts: in the hands of real installers, in real-world conditions.

But we're not stopping there. We're taking it a step further by joining key industry associations like the Association of Plumbing & Heating Contractors, the Chartered Institute of Plumbing & Heating Engineering, and SNIPEF. Being part of these groups helps us stay on top of industry updates, and it means we can connect directly with you – the people who know what's really going on out there.



TRY IT, TEST IT, TRUST IT: DON'T MISS INSTANTOR DEMO DAYS

We know that nothing beats seeing a product in action to really witness its potential. After all, plumbing supplies can often come at an expense, which is why it's important to 'try before you buy' so you can feel confident in your investment.

That's why our demo days feature live product demonstrations with the experts. Watch as we put Instantor fittings & tools through their paces and show you exactly what they can do.

It's the perfect chance to ask those nitty-gritty questions and see how our gear handles real-life demands. This is your chance to get hands-on experience. Grab the tools yourself, test out the features, and see how they hold up in your hands.

Plus, we're sweetening the deal. Demo Day attendees get exclusive offers on the spot, so if you're ready to take a tool home, you'll be walking away with more value in your pocket.

So, bring your questions, bring your curiosity, and bring yourself to an Instantor Demo Day. We're here to make sure you're as confident with our tools as we are.



REGISTER YOUR INTEREST
FOR TRAINING



100 YEARS OF INSTANTOR

At Instantor, we're proud to say that 100 years of innovation, reliability, and service are built into every single product we make. We know that trust is everything, and when you're out on a job, you need tools and fittings you can count on – and that's where Instantor's long standing heritage comes into play.

We've spent quite some time partnering with installers and listening to their needs. We've been through the industry's ups and downs, and our products have been put through the paces time and time again. From generation to generation, Instantor tools have proven themselves to be reliable, resilient, and ready to tackle the toughest plumbing challenges.

From our origins in Dublin city nearly a century ago, to distributing Instantor products internationally today, we remain committed to guiding professionals like you towards unmatched excellence in plumbing and heating.





Instantor[®]

Press System

INSTANTOR
PRESS FITTINGS

50
YEAR
ANNIVERSARY



Saving you Time, Money, and Hassle.

Let's be honest - traditional soldering and welding can be a right pain. It's slow, it's messy, and if you're not careful, it can cause more trouble than it's worth.

That's where the Instantor Press System comes in, giving you a faster, easier way to get the job done. No heat, no hot work permits, just a simple 3-step process - cut, calibrate, press. It's quicker, safer, and every job is guaranteed to be leak-free.

The Instantor Press System is an all-in-one solution combining press fittings and multilayer Pex-Al-Pex pipe, so you've got everything you need in one package while also allowing you to skip the hassle of open flames and dangerous setups. And with our fittings made from CW617N brass and 304 stainless steel, you're getting top-tier, corrosion-resistant materials built to go the distance - so no stress about leaks or contamination.

The system's all about convenience. Each sleeve has three inspection windows, so you can double-check before pressing, making sure you've got a leak-free seal every single time. Plus, our butt-welded multilayer pipe is completely oxygen and vapour-tight, keeping its shape even after bending, which gives you greater control over your install.





Instantor®

Press System

FEATURES

- **BACKED BY EPD CERTIFICATION** - Transparency You Can Trust
 - **CERTIFIED** - WRAS, KIWA & NSAI Approval on Fittings & Pipe
 - **PREMIUM MATERIALS** - CW617N Brass Body, Stainless Steel 304 Sleeves & EPDM O-Rings
 - **QUICK TO INSTALL** - Installation complete in just 3 steps. Cut, Calibrate & Press
 - **LEAK FREE JOINTS** - Inspection window to check for correct pipe insertion
 - **EXTENSIVE OFFERING** - Sizes from 16mm - 63mm to suit domestic, commercial & industrial applications
-
- **FLEXIBLE PIPE** - Lightweight pipe that maintains its memory when bent
 - **BUTT WELDED** - Providing a solid & resilient finish which is 100% oxygen & water vapour tight
 - **DURABLE** - Withstands high temperatures up to 95°C

INSTALLATION INSTRUCTIONS



CUT

1. Cut the pipe squarely to desired length using an appropriate cutting tool.



CALIBRATE

2. Insert the reamer into the cut pipe and rotate, pushing slightly to remove all burrs and rough edges.
NOTE - A poorly calibrated pipe could damage the O-Rings on insertion.



PRESS

3. Connect the pipe and fittings and check pipe is fully inserted in the inspection windows. The white of the pipe must be visible through these holes.
DO NOT USE SEALING AGENTS SUCH AS PTFE TAPE OR JOINTING COMPOUND.
Use TH Profile Jaws to press.

TECHNICAL SUMMARY

- **Max Operating Pressure:** 10 bar
- **Max Operating Temperature:** 95°C
- **Max Peak Temperature** (at 1 hour) : 110°C
- **Application Class:** 2/6 bar, class 5/6 bar
- **Profile:** TH
- **WRAS Approval:** #2304341

Fittings

IP10 Straight Coupler

CODE	SIZE	PACK QTY
IP10001	16mm	10
IP10002	20mm	10
IP10003	26mm	10
IP10004	32mm	10
IP10005	40mm	1
IP10006	50mm	1
IP10007	63mm	1



IP10 Straight Reducer

CODE	SIZE	PACK QTY
IP10021	20 x 16mm	10
IP10031	26 x 16mm	10
IP10032	26 x 20mm	10
IP10042	32 x 20mm	10
IP10043	32 x 26mm	10
IP10052	40 x 20mm	1
IP10053	40 x 26mm	1
IP10054	40 x 32mm	1
IP10063	50 x 26mm	1
IP10064	50 x 32mm	1
IP10056	50 x 40mm	1
IP10074	63 x 32mm	1
IP10075	63 x 40mm	1
IP10076	63 x 50mm	1



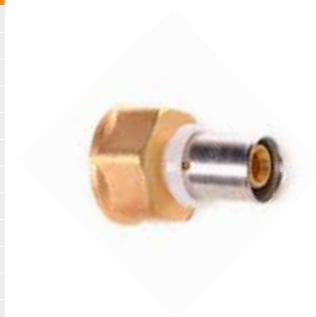
IP11 Straight Coupler M.I. X PIPE

CODE	SIZE	PACK QTY
IP11001	½" M x 16mm	10
IP11012	½" M x 20mm	10
IP11013	½" M x 26mm	10
IP11021	¾" M x 16mm	10
IP11002	¾" M x 20mm	10
IP11023	¾" M x 26mm	10
IP11032	1" M x 20mm	10
IP11003	1" M x 26mm	10
IP11034	1" M x 32mm	10
IP11004	1¼" M x 32mm	10
IP11045	1¼" M x 40mm	1
IP11056	1½" M x 50mm	1
IP11057	1½" M x 63mm	1
IP11066	2" M x 50mm	1
IP11067	2" M x 63mm	1



IP12 Straight Coupler F.I. X PIPE

CODE	SIZE	PACK QTY
IP12001	½" F x 16mm	10
IP12012	½" F x 20mm	10
IP12013	½" F x 26mm	10
IP12021	¾" F x 16mm	10
IP12002	¾" F x 20mm	10
IP12023	¾" F x 26mm	10
IP12032	1" F x 20mm	10
IP12003	1" F x 26mm	10
IP12034	1" F x 32mm	10
IP12004	1¼" F x 32mm	10
IP12045	1¼" F x 40mm	1
IP12056	1½" F x 50mm	1
IP12057	1½" F x 63mm	1



IP13 Adaptor

CODE	SIZE	PACK QTY
IP13001K	½" C x 16mm	10
IP13002K	¾" C x 20mm	10
IP13021K	¾" C x 16mm	10
IP13023K	¾" C x 26mm	10
IP13033K	1" C x 26mm	10
IP13034K	1" C x 32mm	10
IP13011K*	15mm C x 16mm	10
IP13012K*	22mm C x 20mm	10
IP13223K*	22mm C x 26mm	10
IP13035K*	28mm C x 32mm	10



IP13 Elbow Adaptor

CODE	SIZE	PACK QTY
IP13101K	½" C x 16mm	10
IP13102K	¾" C x 20mm	10
IP13110K	15mm C x 16mm	10
IP13111K	22mm C x 20mm	10



Note: Fittings should be kept in original packaging to prevent O-ring lubrication drying out before use.

Note: Fittings should be kept in original packaging to prevent O-ring lubrication drying out before use.

IP14 Spigot

CODE	SIZE	PACK QTY
IP14001	16mm x ½"	10
IP14011	16mm x 15mm	10
IP14002	20mm x ¾"	10
IP14022	20mm x 22mm	10
IP14003	26mm x ¾"	10
IP14033	26mm x 22mm	10
IP14004	26mm x 1"	10
IP14044	26mm x 28mm	10
IP14046	32mm x 28mm	10
IP14047	32mm x 1"	10



IP15 90° Elbow

CODE	SIZE	PACK QTY
IP15001	16mm	10
IP15002	20mm	10
IP15003	26mm	10
IP15004	32mm	10
IP15005	40mm	1
IP15006	50mm	1
IP15007	63mm	1



IP15 45° Elbow

CODE	SIZE	PACK QTY
IP15055	40mm	1
IP15066	50mm	1



IP15 Radiator Extension Elbow

CODE	SIZE	PACK QTY
IP15010	16mm x 300mm	10
IP15011	16mm x 100mm	10



IP16 Elbow M.I. X PIPE

CODE	SIZE	PACK QTY
IP16001	½"M x 16mm	10
IP16012	½"M x 20mm	10
IP16002	¾"M x 20mm	10
IP16023	¾"M x 26mm	10
IP16032	1"M x 20mm	10
IP16003	1"M x 26mm	10
IP16034	1"M x 32mm	10
IP16004	1¼"M x 32mm	10



IP17 Elbow F.I. X PIPE

CODE	SIZE	PACK QTY
IP17001	½"F x 16mm	10
IP17012	½"F x 20mm	10
IP17013	½"F x 26mm	10
IP17002	¾"F x 20mm	10
IP17023	¾"F x 26mm	10
IP17032	1"F x 20mm	10
IP17003	1"F x 26mm	10
IP17034	1"F x 32mm	10
IP17004	1¼"F x 32mm	10
IP17001CP	1/2" F x 16mm Chrome	10



IP18 Equal Tee

CODE	SIZE	PACK QTY
IP18001	16mm	10
IP18002	20mm	10
IP18003	26mm	10
IP18004	32mm	10
IP18005	40mm	1
IP18006	50mm	1
IP18007	63mm	1



Note: Fittings should be kept in original packaging to prevent O-ring lubrication drying out before use.

Note: Fittings should be kept in original packaging to prevent O-ring lubrication drying out before use.

IP18 Reducing Tee

CODE	SIZE	PACK QTY
IP18112	16 x 16 x 20mm	10
IP18211	20 x 16 x 16mm	10
IP18212	20 x 16 x 20mm	10
IP18221	20 x 20 x 16mm	10
IP18223	20 x 20 x 26mm	10
IP18311	26 x 16 x 16mm	10
IP18312	26 x 16 x 20mm	10
IP18313	26 x 16 x 26mm	10
IP18322	26 x 20 x 20mm	10
IP18323	26 x 20 x 26mm	10
IP18331	26 x 26 x 16mm	10
IP18332	26 x 26 x 20mm	10
IP18334	26 x 26 x 32mm	10
IP18414	32 x 16 x 32mm	10
IP18424	32 x 20 x 32mm	10
IP18432	32 x 26 x 20mm	10
IP18433	32 x 26 x 26mm	10
IP18434	32 x 26 x 32mm	10
IP18441	32 x 32 x 16mm	10
IP18442	32 x 32 x 20mm	10
IP18443	32 x 32 x 26mm	10
IP18552	40 x 40 x 20mm	1
IP18553	40 x 40 x 26mm	1
IP18554	40 x 40 x 32mm	1
IP18663	50 x 50 x 26mm	1
IP18664	50 x 50 x 32mm	1
IP18665	50 x 50 x 40mm	1
IP18774	63 x 63 x 32mm	1
IP18775	63 x 63 x 40mm	1
IP18776	63 x 63 x 50mm	1



IP19 Wallplate Elbow

CODE	SIZE	PACK QTY
IP19001	½" F x 16mm	10
IP19012	½" F x 20mm	10



IP30 Tee

CODE	SIZE	PACK QTY
IP30001	16 x 16 x ½" F	10
IP30002	20 x 20 x ¾" F	10
IP30331*	26 x 26 x ½" F	10
IP30003	26 x 26 x 1" F	10
IP30443	32 x 32 x 1" F	10



Note: Fittings should be kept in original packaging to prevent O-ring lubrication drying out before use.

IP51 Stop End

CODE	SIZE	PACK QTY
IP51001	16mm	10
IP51002	20mm	10
IP51003	26mm	10
IP51004	32mm	10



IP20 Nut and Insert Adaptor to Copper Compression

CODE	SIZE	PACK QTY
IP20001	½" x 16mm	10
IP20002	15mm x 16mm	10
IP20003	¾" x 20mm	10
IP20004	1" x 26mm	10
IP20005	22mm x 20mm	10
IP20006	28mm x 26mm	10
IP20001CP	½" x 16mm	10
IP20002CP	15mm x 16mm	10



IP20002CP is suitable for use with all 15mm Sanbra Fyffe Standard TRV's and Rad Valves.

IP20 Press Adaptor to Copper Compression

CODE	SIZE	PACK QTY
IP20060	½" x 16mm	10
IP20061	15mm x 16mm	10
IP20062	¾" x 20mm	10
IP20063*	¾" x 26mm	10
IP20064	22mm x 20mm	10



Shower Bracket

CODE	SIZE
IP93001	16mm

*Not WRAS Approved



Note: Fittings should be kept in original packaging to prevent O-ring lubrication drying out before use.

IP21 Press Adaptor to Copper Press

CODE	SIZE	PACK QTY
IP21001	16mm x 15mm	10
IP21002	20mm x 22mm	10
IP21007	26mm x 22mm	10
IP21003	26mm x 28mm	10
IP21004	16mm x 1/2"	10
IP21005	20mm x 3/4"	10
IP21006	26mm x 1"	10



IP27 Tap Connector

CODE	SIZE	PACK QTY
IP27001*	16mm x 15mm	10



IP70 Isolating Valve

CODE	SIZE	PACK QTY
IP700051*	16mm x 1/2"	-
IP700049*	16mm x 15mm	-



IP80 Lever Ball Valve

CODE	SIZE	PACK QTY
IP80001*	16mm	10
IP80002*	20mm	5
IP80003*	26mm	5
IP80004*	32mm	5



Please specify Red or Blue Handles when ordering (Use 'R' or 'B' after code above).
Not WRAS Approved.

Flexible Hoses

CODE	SIZE
IP700110*	1/2" x 16mm IP x 300mm
IP700109*	1/2" x 16mm IP x 500mm



Thermostatic Radiator Valves

CODE	SIZE
IP771095*	16mm TRV ONLY
IP771096*	16mm TRV PACK

*Not WRAS Approved



Note: Fittings should be kept in original packaging to prevent O-ring lubrication drying out before use.

Brass Manifolds

CODE	SIZE
771871C*	3/4" x 1/2" x 2 Port + IP Adaptor
771872C*	1" x 1/2" x 2 Port + IP Adaptor
771874C*	3/4" x 1/2" x 3 Port + IP Adaptor
771875C*	1" x 1/2" x 3 Port + IP Adaptor
771877C*	3/4" x 1/2" x 4 Port + IP Adaptor
771878C*	1" x 1/2" x 4 Port + IP Adaptor



IP Brass Manifolds with Fixed Adaptors

CODE	SIZE
IP771871*	3/4" x 16mm 2 Port Manifold
IP771874*	3/4" x 16mm 3 Port Manifold
IP771877*	3/4" x 16mm 4 Port Manifold
IP771872*	1" x 16mm 2 Port Manifold
IP771875*	1" x 16mm 3 Port Manifold
IP771878*	1" x 16mm 4 Port Manifold



IP WRAS Approved Brass Manifolds

CODE	SIZE
771871PWK	3/4" x 16mm 2 Port Manifold
771874PWK	3/4" x 16mm 3 Port Manifold
771877PWK	3/4" x 16mm 4 Port Manifold
771872PWK	1" x 16mm 2 Port Manifold
771875PWK	1" x 16mm 3 Port Manifold
771878PWK	1" x 16mm 4 Port Manifold



IP WRAS Approved Brass Manifolds

CODE	SIZE
771897PWK	1" x 20mm x 4 Port Manifold
771896PWK	1" x 20mm x 3 Port Manifold
771879PWK	1" x 20mm x 2 Port Manifold



IP Brass Manifolds - with ISO Valves

CODE	SIZE
IP771892*	3/4" x 16mm 2 Port Manifold with ISO Valve
IP771894*	3/4" x 16mm 3 Port Manifold with ISO Valve
IP771895*	3/4" x 16mm 4 Port Manifold with ISO Valve
IP771893*	1" x 16mm 2 Port Manifold with ISO Valve



IP Manifold Blank

CODE	SIZE
IP51011*	1/2"

*Not WRAS Approved



Note: Fittings should be kept in original packaging to prevent O-ring lubrication drying out before use.



Instantor[®]

Press System

INSTANTOR
LEAK BEFORE PRESS



Introducing Leak Before Press – Your Built-In Safety Net.

Because nobody wants a callback.

Every installer knows the pressure of tight deadlines and the risks that come with a single missed press. One unsealed fitting can lead to water damage, customer complaints, and costly callbacks. That's why Instantor has introduced a Leak Before Press (LBP) option to its Press System solutions, a smart, fail-safe feature that gives you peace of mind on every job.

In water-based applications, LBP fittings are designed to visibly leak under low pressure if they haven't been pressed. This creates an immediate visual alert, allowing you to identify and correct any missed fittings before leaving the site. It's a simple yet highly effective way to catch small mistakes early and avoid major headaches later.

The new LBP Press Fittings are an alternative option to the original, trusted Instantor Press Fittings, with no compromise on the quality or durability you expect. Manufactured from CW617N brass and 304 stainless steel, these fittings are built to last and deliver a tight, secure, and guaranteed leak-free seal. They're available in sizes up to 32mm and pair perfectly with our Instantor Pex-Al-Pex pipe.

By helping you spot issues before they cause problems, LBP fittings save valuable time on every install. Backed by a 50-year warranty on both fittings and pipe, this is another example of how Instantor is committed to delivering smarter, safer, and more efficient plumbing solutions.

LBP





Instantor®

Press System

FEATURES

- **FAIL-SAFE DESIGN** - Unpressed joints leak by design, providing instant visual alert
- **FAST ISSUE DETECTION** - Easily spot and press missed connections before handover
- **REDUCED CALLBACKS** - Helps eliminate hidden leaks and post-installation issues
- **TIME-SAVING SOLUTION** - Simple enhancement that adds major peace of mind
- **DURABLE BUILD** - Made from CW617N brass and 304 stainless steel for long-term reliability
- **COMPATIBLE SIZING** - Available in sizes up to 32mm to suit a range of installations

LBP

INSTALLATION INSTRUCTIONS



CUT

1. Cut the pipe squarely to desired length using an appropriate cutting tool.



CALIBRATE

2. Insert the reamer into the cut pipe and rotate, pushing slightly to remove all burrs and rough edges.
NOTE - A poorly calibrated pipe could damage the O-Rings on insertion.



PRESS

3. Connect the pipe and fittings and check pipe is fully inserted in the inspection windows. The white of the pipe must be visible through these holes.
DO NOT USE SEALING AGENTS SUCH AS PTFE TAPE OR JOINTING COMPOUND.
Use TH Profile Jaws to press.

TECHNICAL SUMMARY

- **Max Operating Pressure:** 10 bar
- **Max Operating Temperature:** 95°C
- **Max Peak Temperature** (at 1 hour) : 110°C
- **Application Class:** 2/6 bar, class 5/6 bar
- **Profile:** TH

LBP IP10 Straight Coupler



CODE	SIZE	PACK QTY
IP10001LBP	16mm	10
IP10002LBP	20mm	10
IP10003LBP	26mm	10
IP10004LBP	32mm	10

LBP IP10 Straight Reducer



CODE	SIZE	PACK QTY
IP10021LBP	20mm x 16mm	10
IP10031LBP	26mm x 16mm	10
IP10032LBP	26mm x 20mm	10
IP10042LBP	32mm x 20mm	10
IP10043LBP	32mm x 26mm	10

LBP IP11 Straight Coupler M.I



CODE	SIZE	PACK QTY
IP11001LBP	1/2" M x 16mm	10
IP11002LBP	3/4" M x 20mm	10
IP11003LBP	1" M x 26mm	10
IP11012LBP	1/2" M x 20mm	10
IP11021LBP	3/4" M x 16mm	10
IP11023LBP	3/4" M x 26mm	10
IP11034LBP	1" M x 32mm	10

LBP IP12 Straight Coupler F.I



CODE	SIZE	PACK QTY
IP12001LBP	1/2" F x 16mm	10
IP12003LBP	1" F x 26mm	10
IP12023LBP	3/4" F x 26mm	10
IP12034LBP	1" F x 32mm	10

LBP IP13 Adaptor



CODE	SIZE	PACK QTY
IP13001ALBP	1/2" C x 16mm	10
IP13002ALBP	3/4" C x 20mm	10
IP13021ALBP	3/4" C x 16mm	10
IP13023ALBP	3/4" C x 26mm	10
IP13033ALBP	1" C x 26mm	10
IP13034ALBP	1" C x 32mm	10
IP13035ALBP	28mm C x 32mm	10

LBP IP13 Elbow Adaptor



CODE	SIZE	PACK QTY
IP13101ALBP	1/2" C x 16mm	10
IP13102ALBP	3/4" C x 20mm	10
IP13110ALBP	15mm C x 16mm	10

LBP IP14 Spigot



CODE	SIZE	PACK QTY
IP14001LBP	16mm x 1/2"	10
IP14002LBP	20mm x 3/4"	10
IP14003LBP	26mm x 3/4"	10
IP14011LBP	16mm x 15mm	10
IP14022LBP	20mm x 22mm	10
IP14033LBP	26mm x 22mm	10
IP14046LBP	32mm x 28mm	10
IP14047LBP	32mm Press x 1"	10

LBP IP15 Elbow



CODE	SIZE	PACK QTY
IP15001LBP	16mm	10
IP15002LBP	20mm	10
IP15003LBP	26mm	10
IP15004LBP	32mm	10

LBP IP15 Radiator Extension Elbow



CODE	SIZE	PACK QTY
IP15010LBP	16mm x 300mm	10

LBP IP16 Elbow M.I



CODE	SIZE	PACK QTY
IP16001LBP	1/2" M x 16mm	10
IP16002LBP	3/4" M x 20mm	10
IP16003LBP	1" M x 26mm	10
IP16023LBP	3/4" M x 26mm	10
IP16034LBP	1" M x 32mm	10

LBP IP17 Elbow F.I



CODE	SIZE	PACK QTY
IP17001LBP	1/2" F x 16mm	10
IP17002LBP	3/4" F x 20mm	10
IP17003LBP	1" F x 26mm	10
IP17012LBP	1/2" F x 20mm	10
IP17023LBP	3/4" F x 26mm	10
IP17034LBP	1" F x 32mm	10

LBP IP18 Equal Tee



CODE	SIZE	PACK QTY
IP18001LBP	16mm	10
IP18002LBP	20mm	10
IP18003LBP	26mm	10
IP18004LBP	32mm	10

LBP IP18 Reducing Tee



CODE	SIZE	PACK QTY
IP18112LBP	16 x 16 x 20mm	10
IP18211LBP	20 x 16 x 16mm	10
IP18212LBP	20 x 16 x 20mm	10
IP18221LBP	20 x 20 x 16mm	10
IP18223LBP	20 x 20 x 26mm	10
IP18311LBP	26 x 16 x 16mm	10
IP18313LBP	26 x 16 x 26mm	10
IP18323LBP	26 x 20 x 26mm	10
IP18331LBP	26 x 26 x 16mm	10
IP18332LBP	26 x 26 x 20mm	10
IP18414LBP	32 x 16 x 32mm	10
IP18424LBP	32 x 20 x 32mm	10
IP18432LBP	32 x 26 x 20mm	10
IP18433LBP	32 x 26 x 26mm	10
IP18441LBP	32 x 32 x 16mm	10
IP18442LBP	32 x 32 x 20mm	10
IP18443LBP	32 x 32 x 26mm	10

LBP IP19 Wallplate Elbow



CODE	SIZE	PACK QTY
IP19001LBP	1/2" F x 16mm	10
IP19012LBP	1/2" F x 20mm	10

Note: Products produced from brass are NOT suitable for use underground.

Note: Products produced from brass are NOT suitable for use underground.

LBP IP20 Press Adaptor to Copper Compression



CODE	SIZE	PACK QTY
IP20060LBP	16mm x 1/2"	10
IP20061LBP	16mm x 15mm	10
IP20062LBP	3/4" x 20mm	10

LBP IP21 Press Adaptor to Copper Press



CODE	SIZE	PACK QTY
IP21001LBP	16mm x 15mm	10
IP21002LBP	20mm x 22mm	10
IP21004LBP	16mm x 1/2"	10
IP21005LBP	20mm x 3/4"	10

LBP IP27 Tap Connector



CODE	SIZE	PACK QTY
IP27001LBP	1/2" x 16mm	10

LBP IP30 Tee



CODE	SIZE	PACK QTY
IP30001LBP	16 x 16 x 1/2" F	10
IP30002LBP	20 x 20 x 3/4" F	10
IP30003LBP	26 x 26 x 1" F	10

LBP IP51 Stop End



CODE	SIZE	PACK QTY
IP51001LBP	16mm	10
IP51002LBP	20mm	10
IP51003LBP	26mm	10
IP51004LBP	32mm	10

LBP Shower Bracket



CODE	SIZE	PACK QTY
IP93001LBP	16mm	10

Note: Products produced from brass are NOT suitable for use underground.



Instantor[®]

Pex-Al-Pex Pipe

INSTANTOR
PEX-AL-PEX PIPE

50
YEAR
ANNIVERSARY

The Pipe That Works As Hard As You Do.

We know your time is valuable, and the last thing you need is a pipe that doesn't perform. That's why Instantor Pex-Al-Pex multilayer pipe is built to give you reliability you can trust, whether you're tackling potable water, underfloor heating, or general plumbing and heating installations.

Certified to EN ISO 21003 and WRAS-approved, this pipe combines the durability of metal with the flexibility of plastic. Its aluminium layer keeps its shape after bending, while the PE-xB inner layer ensures total hygiene and corrosion resistance.

No call backs, no headaches –
just a robust solution that gets the job done.





Instantor[®]

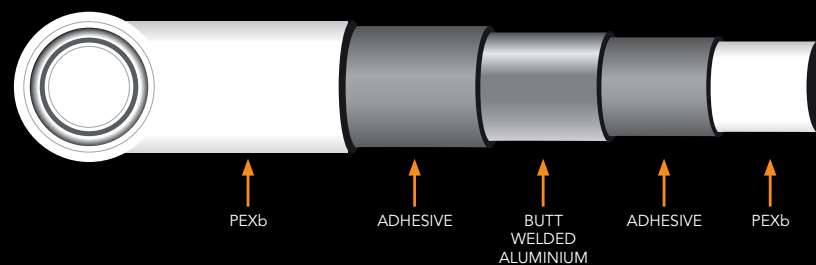
Pex-Al-Pex Pipe

FEATURES

- **FLEXIBLE PIPE** - Lightweight pipe that maintains its memory when bent
- **BUTT WELDED** - Providing a solid & resilient finish which is 100% oxygen & water vapour tight
- **DURABLE** - Withstands high temperatures up to 95°C
- **VERSATILE** - Suitable for use in underfloor heating, potable water & most general plumbing applications
- **DIVERSE RANGE** - Available from 16mm-63mm in plain and insulated options

TECHNICAL SUMMARY

- **Max Operating Pressure:** 10 bar
- **Max Operating Temperature:** 95°C
- **Max Peak Temperature (at 1 hour):** 110°C
- **Application Class:** 2/6 bar, class 5/6 bar
- **Profile:** TH
- **WRAS Approval:** #2304341





Instantor®

Pex-Al-Pex Pipe

Product Overview

INSTANTOR® Pex-Al-Pex (PE-xB/Al/PE-xB) is a multilayer pipe NSAI Certified to EN ISO 21003 and WRAS approved, combining all the advantages of metal and plastic pipe.

This pipe is constructed with a double inner and outer layer of Silane method crosslinked polyethylene PE-xB, then bound by quality adhesive to a longitudinally TIG butt welded

100% oxygen tight aluminium layer. It is this aluminium layer that allows the pipe to maintain its shape after bending. Total hygiene and high corrosion resistance is ensured as fluids come in contact with the inner PE-xB layer only.

MULTI APPLICATIONS: Potable water, underfloor heating and all general plumbing and heating applications.



INSTANTOR® PEXB/AL/PEXB Pipe Lengths

CODE	SIZE	BUNDLE QTY
IPAP111	16mm x 4M	50
IPAP112	20mm x 4M	35
IPAP113	26mm x 4M	20
IPAP114	32mm x 4M	12
IPAP115	40mm x 4M	6
IPAP116	50mm x 4M	5
IPAP117	63mm x 4M	5



INSTANTOR® PEXB/AL/PEXB Pipe Coils

CODE	SIZE	PALLET QTY
IPAP101	16mm x 100M	10
IPAP102	20mm x 100M	10
IPAP103	26mm x 50M	10
IPAP104	32mm x 50M	10
IPAP105	16mm x 500M	5
IPAP107	16mm x 200M	5



INSTANTOR® PEXB/AL/PEXB PIPE Technical Specifications

UNIT OF MEASUREMENT		IPAP101 IPAP111	IPAP102 IPAP112	IPAP103 IPAP113	IPAP104 IPAP114	IPAP105 -	IPAP107 -	- IPAP115	- IPAP116	- IPAP117
Outer Diameter	mm	16	20	26	32	16	16	40	50	63
Inner Diameter	mm	12	16	20	26	12	12	32	41	51
Weight	kg/M	0.112	0.148	0.266	0.362	0.112	0.112	0.557	0.797	1.270
Thickness of Aluminium	mm	0.25	0.3	0.35	0.5	0.25	0.25	0.5	0.5	0.6
Total Thickness	mm	2	2	3	3	2	2	4	4.5	6
Coils Length	M	100	100	50	50	500	200	-	-	-
Straight Lengths	M	4	4	4	4	-	-	4	4	4
Volume of water	l/m	0.113	0.201	0.314	0.531	0.113	0.113	0.803	1.319	2.014
Internal roughness	µm	7								
Thermal conductivity at Delta T 40°C	W/mk	0.43								
Coefficient of expansion	mm/m°C	0.025								
Degree of crosslinking	°C	≥65°C								
Oxygen permeability	mg/l	0								
Colour		White								
Type		PE-xB/Al/PE-xB multilayer pipe								
Field of application		Plumbing in civil, industrial and commercial applications								
Fluid		Potable water, technical water, and water glycol(*)								
Max peak temperature	°C	110								
Minimum operating temperature(*)	°C	0								
Maximum operating pressure at 95°C	bar	6								
Maximum operating pressure at 20°C	bar	10								
Duration at 95°C and 6 bar		Time duration to be determined by service conditions								
Storage		Avoid prolonged exposure to direct sunlight								
Minimum bend radius		5 times the diameter								

(*) In the case of water glycol, in order to define the minimum operating temperature, it is necessary to know the elements of the mixture and the various concentrations.

Application Class Table (ISO 21003-1)

Application Class	Design Temperature T _D °C	Time ^b at T _D Years	T _{max} °C	Time at T _{max} years	T _{mal} °C	Time at T _{mal} h	Typical field of application
1 ^a	60	49	80	1	95	100	Hot water supply (60°C)
2 ^a	70	49	80	1	95	100	Hot water supply (70°C)
4 ^b	20 + Cumulative 40 + Cumulative 60	2.5 20 25	70	2.5	100	100	Underfloor heating and low-temperature radiators
5 ^b	20 + Cumulative 60 + Cumulative 80	14 25 10	90	1	100	100	High-temperature radiators

^a A country may select either class 1 or class 2 in conformity with its nation regulations.

^b Where more than one design temperature for time and associated temperature appears for any class, they should be aggregated.

"Plus cumulative" in the table implies a temperature profile of the mentioned temperature over time (e.g. the design temperature profile for 50 years for class 5 is 20°C for 14 years followed by 60°C for 25 years, 80°C for 10 years, 90°C for 1 year and 100°C for 100h).

NOTE: For values of T_D, T_{max} and T_{mal} in excess of those in the table, this International Standard does not apply. In the case of water glycol, in order to define the minimum operating temperature, it is necessary to know the elements of the mixture and the various concentrations.



Instantor®

Pex-Al-Pex Pipe

Product Overview

INSTANTOR® PEX-AL-PEX (PE-xB/Al/PE-xB) INSULATED multilayer pipe is an insulated multilayer pipe for multi-applications.

Enclosed in a scratch resistant, closed cell polyethylene foam insulating sheath, this pipe is constructed with a double inner and outer layer of Silane method crosslinked polyethylene PE-xB, then bound by quality adhesive to a butt welded 100% oxygen tight aluminium layer. It is this aluminium layer that allows the pipe to maintain its shape after bending.

Total hygiene and high corrosion resistance is ensured as fluids come in contact with the inner PE-xB layer only.

MULTI APPLICATIONS: Potable water and all general plumbing and heating applications.



WHITE		RED		BLUE			
CODE		CODE		CODE		SIZE	PALLET QTY
IPAP201		IPAP301		IPAP401		16 x 100M	10
IPAP202		IPAP302		IPAP402		20 x 50M	10
IPAP203		IPAP303		IPAP403		26 x 25M	10
IPAP204		IPAP304		IPAP404		32 x 25M	10
IPAP205		-		-		26 x 50M	-

Increased Insulation Thickness

CODE	SIZE	INSULATION THICKNESS
IPAP1101	16mm x 25M	17mm
IPAP1102	20mm x 25M	17mm
IPAP1103	26mm x 25M	19mm

PEX-AL-PEX - Fire Rated Increased Insulation Thickness

CODE	PART L DOMESTIC TABLE 20 COMPLIANT	SIZE	INSULATION THICKNESS	LINEAR HEAT LOSS	MAX PERMISSIBLE HEAT LOSS
IPAP701	YES	16mm x 25M	17mm	7.889 W/m	7.89 W/m
IPAP702	YES	20mm x 25M	17mm	8.965 W/m	9.12 W/m
IPAP703	YES	26mm x 25M	19mm	9.973 W/m	10.07 W/m

Linear Heat Loss Calculated as per ISO12241 via BS5422. Water temperature 60°, with still air temperature 15°

INSTANTOR® PEXB/AL/PEXB Insulation Pipe Coils Technical Specifications

		IPAP201 IPAP301 IPAP401	IPAP202 IPAP302 IPAP402	IPAP203 IPAP303 IPAP403	IPAP204 IPAP304 IPAP404	IPAP205	IPAP1101	IPAP1102	IPAP1103	IPAP701	IPAP702	IPAP703	
Outer diameter	mm	16	20	26	32	26	16	20	26	16	20	26	
Sheath thickness for heating	mm	6	6	6	6	6	17	17	19	17	17	19	
Diameter pipe + sheath (heating)	mm	28	32	38	44	38	50	54	64	50	54	64	
Aluminium thickness	mm	0.25	0.3	0.35	0.5	0.35	0.25	0.30	0.35	0.25	0.3	0.35	
Roll length	M	100	50	25	25	50	25	25	25	25	25	25	
Volume of water	l/m	0.113	0.201	0.314	0.531	0.314	0.113	0.201	0.314	0.113	0.201	0.314	
Thermal conductivity at 20°C	W/mk	0.04									0.0397		
Internal roughness	µm	7									7		
Coefficient of expansion	mm/m°C	0.025									0.025		
Density - Foam	kg/m³	35 to 45									35 to 45		
Degree of crosslinking	%	≥65%									≥65%		
Oxygen permeability	mg/l	0									0		
Colour		White / Red / Blue / White									Mild Grey		
Pipe material		PE-xB/Al/PE-xB multilayer pipe											
Sheath material		Closed-cell polyethylene foam PE-LD											
Scratch-resistant finish layer		Closed-cell polyethylene foam PE-LD											
Field of application		Plumbing in civil, industrial and commercial applications											
Fluid		Potable water, technical water, and water glycol(*)											
Max peak temperature	°C	110											
Minimum operating temperature(*)	°C	0											
Maximum operating pressure at 95°C	bar	6											
Maximum operating pressure at 20°C	bar	10											
Duration at 95°C and 6 bar		Time duration to be determined by service conditions											
Storage		Avoid prolonged exposure to direct sunlight											
Minimum bend radius(**)		5 times the diameter											
Insulation Thickness (round)	mm	6	6	6	6	6	17	17	19	17	17	19	
Fire Classification		EL (EN13501-17:2007 A1:2009)									BL-S1-d0 (EN13501)		

(*)Reference is made to a sheathed pipe and the use of a suitable water glycol mix.

(**)Take the thickness of the sheath into account when bending a pipe with a bender. eg.: Ø16 sheath: total thickness=28mm, use bender with Ø26 profile.

See page 28 for Application Class Table (ISO 21003-1)

Accessories

IP20 Bending Spring Pack (Internal & External)

CODE	SIZE	BOX QTY
IP20030	16mm	10
IP20031	20mm	10
IP20032	26mm	10
IP20033	32mm	5



Pipe Decoiler

CODE	SIZE	BOX QTY
IP20017	Suits All Sizes	-



Push Fit Press Test Fitting

CODE	SIZE
IP20071*	16mm Incl Tool
IP20072*	20mm Incl. Tool
IP20075*	16mm Removal Tool
IP20076*	20mm Removal Tool



Pressure Test Gauge

CODE	SIZE
IP20077*	Gauge For Pressure Test Fittings



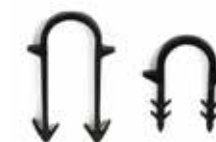
Adhesive Tracking Strip

CODE	SIZE
IP20019	16mm x 1M



Pipe Staple

CODE	SIZE	PACK QTY
IP20014	16mm x 40mm	30
IP20012	16mm x 60mm	30



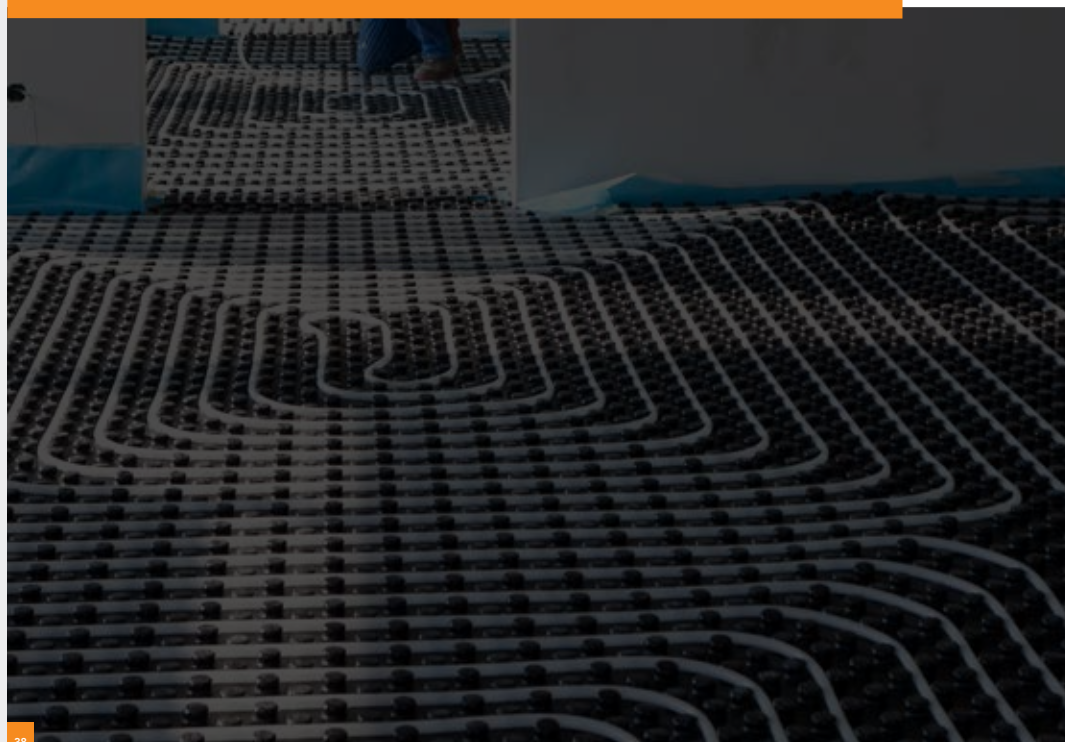
Manifold Bracket

CODE	SIZE	PACK QTY
771910	3/4"	20
771911	1"	18



*Not WRAS Approved

Note: Fittings should be kept in original packaging to prevent O-ring lubrication drying out before use.





Instantor[®]

Copper Press

INSTANTOR
COPPER PRESS

25
YEAR
GUARANTEE

Flame-Free Jointing & 35% Faster Installations.

Sick of faffing about with soldering? We don't blame you. Open flames, the constant need for hot work permits, and the risk of scorching make traditional methods more hassle than they're worth.

Instantor Copper Press gives you flame-free jointing that gets the job done 35% faster than traditional soldering methods. Backed by industry certifications like WRAS, Kiwa, and GASTEC QA, you get a high-quality solution that's faster, safer, and easier - so you can get more jobs done without the hassle.

With no need for torches, flux, or heat mats, you can ditch the extra gear, save yourself multiple trips back and forth, and focus on getting the job done. Instantor Copper Press fittings are available in imperial and metric sizes with a range suited to water or gas applications. Plus, the leak-before-press feature makes sure any unpressed joints show up during testing, so there's no need to worry about hidden leaks.

The best part? You get a clean, professional finish without the mess of heat or scorch marks. And with a 25-year guarantee, you know it's going to last. Whether you're working on domestic, commercial, or industrial jobs, the Instantor Copper Press makes every install quicker, safer, and more reliable. It's plumbing made easy.





Instantor®

Copper Press

FEATURES

- **BACKED BY EPD CERTIFICATION** - Transparency You Can Trust
- **CERTIFIED** - WRAS & KIWA approval on fittings
- **SAFER INSTALLATIONS** - Flame free jointing with no requirement for hotworks permit
- **QUICK TO INSTALL** - Installation complete in just 5 steps. Cut, Calibrate, Check, Mark & Press
- **SAVE ON TIME** - 35% faster install than traditional soldering method
- **EXTENSIVE OFFERING** - Available in metric sizing from 15mm-54mm
- **LEAK DETECTION** - EPDM O-Rings designed with feature to identify un-pressed joints during system testing

INSTALLATION INSTRUCTIONS



CUT

1. Ensure that the fitting is the correct size for the tube being used. Cut the pipe to length using a good quality pipe cutter or rotary pipe cutter. It is important that pipe ends are clean, cut square, and the pipe is not deformed. High speed grinding wheels are not suitable.



CALIBRATE

2. All burrs and sharp edges should be removed. Using a de-burring tool to both the inside and outside of the pipe, leaving an external chamfer. Wipe the pipe end clean. The pipe ends should be free from scratches or scores for a distance not less than the socket depth. **NOTE:** A poorly calibrated pipe could damage the O-ring on insertion.



CHECK

3. Before inserting the pipe, check the O-ring is seated, lubricated and free from damage. (Re-moisten O-ring with water if necessary).



MARK

4. Insert the pipe fully into the socket of the fitting until it hits the pipe stop (or until pipes meet in the middle in fittings without a pipe stop). Mark the insertion depth with black marker to ensure the pipe has been fully inserted before pressing.



PRESS

5. Making sure to select the correct profile Jaw, VI or M for copper press, execute the press cycle. After the press tool cycle is complete remove the Press Jaws and check that the socket depth marking on the pipe has remained in place, adjacent to the mouth of the fitting.

NOTE: Fittings should be kept in original packaging to protect the O-ring and prevent drying out of lubrication.

NB: Copper Press water fittings are only suitable for water applications and O-rings are not interchangeable with other Instantor Copper Press Products. Only water Copper Press product (indicated with black O-Rings) should be used on water installations and under no circumstances should 'O-rings' be changed or altered.

TECHNICAL SUMMARY

- **Operating Pressure & Temperatures:**
 - 16bar @ 30°C
 - 10bar @ 95°C
- **Max Operating Temperature:** 110°C
- **Min Operating Temperature:** -25°C

Further technical information available, see page 38.

SPACING BETWEEN FITTINGS

Minimum spacing between fittings is recommended as follows:

15mm - 10mm space
22mm - 20mm space
28mm - 20mm space

PIPE SUPPORT

Pipe supports should be used to prevent movement and vibration in the finished system. Maximum bracket distance for copper tube:

15mm	1.8m Vertical	1.2m Horizontal
22mm	2.4m Vertical	1.8m Horizontal
28mm	2.4m Vertical	1.8m Horizontal

WARNING

Due care should be taken to prevent damage to copper press fittings and O-rings by heat transfer due to nearby brazing. High temperature can anneal copper pipe making it too soft for press fit along with causing excessive heat damage to the EPDM O-rings. Each fitting and O-ring should be inspected before installation to confirm that there is no damage or defects due to storage or transportation. Do not use fitting if any visual defects are noted.

WATER

WATER Metric Fittings

CP410 Straight Coupler



CODE	SIZE	PACK QTY
CP410001	15mm	10
CP410002	22mm	10
CP410003	28mm	10
CP410004	35mm	L
CP410005	42mm	L
CP410006	54mm	L

CP410 Straight Reducer



CODE	SIZE	PACK QTY
CP410021	22mm x 15mm	10
CP410031	28mm x 15mm	10
CP410032	28mm x 22mm	10

CP410 Slip Coupler



CODE	SIZE	PACK QTY
CP4100S1	15mm	10
CP4100S2	22mm	10
CP4100S3	28mm	10

CP411 Straight Coupler M.I x Press



CODE	SIZE	PACK QTY
CP411001	1/2" M x 15mm	-
CP411002	3/4" M x 22mm	-
CP411003	1" M x 28mm	-

CP412 Straight Coupler F.I x Press



CODE	SIZE	PACK QTY
CP412001	1/2" F x 15mm	-
CP412002	3/4" F x 22mm	-
CP412003	1" F x 28mm	-

CP413 Bent Swivel Connector



CODE	SIZE	PACK QTY
CP413001*	15mm x 1/2"	10

CP414 Straight Swivel Connector



CODE	SIZE	PACK QTY
CP414001*	15mm x 1/2"	10
CP414002*	22mm x 3/4"	10

CP415 Elbow



CODE	SIZE	PACK QTY
CP415001	15mm	10
CP415002	22mm	10
CP415003	28mm	5
CP415004	35mm	L
CP415005	42mm	L
CP415006	54mm	L
CP415021	22mm x 15mm	10
CP415031	28mm x 15mm	5
CP415032	28mm x 22mm	5

CP418 Reducing Tee



CODE	SIZE	PACK QTY
CP418112	15mm x 15mm x 22mm	10
CP418211	22mm x 15mm x 15mm	10
CP418212	22mm x 15mm x 22mm	10
CP418221	22mm x 22mm x 15mm	10
CP418223	22mm x 22mm x 28mm	5
CP418311	28mm x 15mm x 15mm	5
CP418312	28mm x 15mm x 22mm	5
CP418313	28mm x 15mm x 28mm	5
CP418321	28mm x 22mm x 15mm	5
CP418322	28mm x 22mm x 22mm	5
CP418323	28mm x 22mm x 28mm	5
CP418331	28mm x 28mm x 15mm	5
CP418332	28mm x 28mm x 22mm	5

CP418 Equal Tee



CODE	SIZE	PACK QTY
CP418001	15mm	10
CP418002	22mm	10
CP418003	28mm	4
CP418004	35mm	L
CP418005	42mm	L
CP418006	54mm	L

CP419 Fitting Reducer



CODE	SIZE	PACK QTY
CP419021	22mm x 15mm	10
CP419031	28mm x 15mm	10
CP419032	28mm x 22mm	10
CP419043	35mm x 28mm	L
CP419054	42mm x 35mm	L
CP419065	54mm x 42mm	L

CP468 633 M.T Cock



CODE	SIZE	PACK QTY
CP468001	15mm Press	10

CP435 Street Elbow



CODE	SIZE	PACK QTY
CP435001	15mm	10
CP435002	22mm	10
CP435003	28mm	5

CP425 Obtuse Street Elbow



CODE	SIZE	PACK QTY
CP425001	15mm	10
CP425002	22mm	10
CP425003	28mm	5

CP445 Obtuse Bend



CODE	SIZE	PACK QTY
CP445001	15mm	10
CP445002	22mm	10
CP445003	28mm	5

CP451 Stop End



CODE	SIZE	PACK QTY
CP451001	15mm	20
CP451002	22mm	15
CP451003	28mm	10
CP451004	35mm	L
CP451005	42mm	L
CP451006	54mm	L

IP21 Press Adaptor to Copper Press



CODE	SIZE	PACK QTY
IP21001*	16mm x 15mm	10
IP21002*	20mm x 22mm	10
IP21003*	26mm x 28mm	10

Note: Fittings should be kept in original packaging to prevent O-ring lubrication drying out before use.

*Not WRAS Approved.

Note: Fittings should be kept in original packaging to prevent O-ring lubrication drying out before use.

*Not WRAS Approved.



Instantor[®]

Copper Press

TECHNICAL INFORMATION

PRESSING PROFILE:

M Profile - Sizes: 15mm, 22mm, 28mm, 35mm, 42mm & 54mm

APPLICATION:

Fittings with black EPDM O-Rings are designed for use in hot and cold water services, heating systems*, chilled water. Instantor Copper press fittings are designed to be used with hard or half hard copper pipe conforming to EN 1057. *Excluding solar heating applications, solid fuel primary pipelines and directly buried/embedded applications.

SYSTEM TESTING:

Pressure testing on Instantor Copper Press fittings should normally be carried out using clean potable water in accordance with EN806.

All fitting joints installed in the system must remain completely visible and accessible until the system has been successfully leak and pressure tested.

After flushing, fill the system with clean potable water ensuring all trapped air has been expelled. Apply pressure between 1 and 2 bar and perform inspection for un-pressed fittings. If un-pressed fittings are identified, they may be pressed without draining the system. Do not press fittings more than once. When satisfied, no un-pressed fittings remain, increase pressure slowly to the system test pressure. Testing of the system should be carried out in accordance with EN806 to 1.1 times the working pressure (Maximum Design Pressure) of the system.

Full test pressure should hold for a minimum of 30 minutes without any sign of drop in pressure. Final visual inspection should then be carried out to confirm system is leak tight.

GUARANTEE:

Copper is known for its durability, corrosion resistance, thermal conductivity, and hygienic qualities. In some cases, (e.g. chilled water lines) external protection may be required to protect against corrosive conditions.

Instantor Copper Press fittings are guaranteed for 25 years provided they have been installed following correct procedure within operating conditions for which they are designed, by a fully qualified plumber using the correct pressing equipment which holds a valid calibration certificate.

CERTIFICATION:



Imperial Instantor Copper Press
WRAS Approval Number: 2003301 & 2205310
Metric Instantor Copper Press
WRAS Approval Number: 1903373



Imperial Instantor Copper Press
KIWA Certificate Number: 2002711





Instantor®

Copper Press

FEATURES

- **BACKED BY EPD CERTIFICATION** - Transparency You Can Trust
- **CERTIFIED** - KIWA GASTEC approval on fittings
- **SAFER INSTALLATIONS** - Flame free jointing with no requirement for hotworks permit
- **QUICK TO INSTALL** - Installation complete in just 5 steps. Cut, Calibrate, Check, Mark & Press
- **SAVE ON TIME** - 35% faster install than traditional soldering method
- **EXTENSIVE OFFERING** - Available in metric sizing from 15mm-28mm
- **AESTHETIC FINISH** - Neater & cleaner finish with no risk of heat or scorch marks!

INSTALLATION INSTRUCTIONS



CUT



CALIBRATE



CHECK



MARK



PRESS

1. Ensure that the fitting is the correct size for the tube being used. Cut the pipe to length using a good quality pipe cutter or rotary pipe cutter. It is important that pipe ends are clean, cut square, and the pipe is not deformed. High speed grinding wheels are not suitable.

2. All burrs and sharp edges should be removed. Using a de-burring tool to both the inside and outside of the pipe, leaving an external chamfer. Wipe the pipe end clean. The pipe ends should be free from scratches or scores for a distance not less than the socket depth. **NOTE:** A poorly calibrated pipe could damage the O-ring on insertion.

3. Before inserting the pipe, check the O-ring is seated, lubricated and free from damage. (Re-moisten O-ring with water if necessary**).

4. Insert the pipe fully into the socket of the fitting until it hits the pipe stop (or until pipes meet in the middle in fittings without a pipe stop). Mark the insertion depth with black marker to ensure the pipe has been fully inserted before pressing.

5. Making sure to select the correct profile Jaw ('VI' for Imperial/Irish Instantor Copper Press), execute the press cycle. After the press tool cycle is complete remove the Press Jaws and check that the socket depth marking on the pipe has remained in place, adjacent to the mouth of the fitting.

NOTE: Fittings should be kept in original packaging to protect the O-ring and prevent drying out of lubrication.

NB: Copper Press gas fittings are only suitable for gas applications and O rings are not interchangeable with other Instantor Copper Press Products. Only gas Copper Press product (indicated with yellow O-Rings) should be used on gas installations and under no circumstances should 'O-rings' be changed or altered.

TECHNICAL SUMMARY

- **Operating Pressure & Temperatures:**
Under GASTEC QA 186 approval
200mbar domestic gaseous fuel
-20°C to +70°C

General -20°C to +70°C. MOP 5 Bar -
External above ground and MOP 1
Bar - within building subject to fire
regulations

Further technical information available, see page 44

SPACING BETWEEN FITTINGS

Minimum spacing between fittings is recommended as follows:

15mm - 10mm space
22mm - 20mm space
28mm - 20mm space

PIPE SUPPORT

Pipe supports should be used to prevent movement and vibration in the finished system.

Maximum bracket distance for copper tube:
15mm 1.8m Vertical 1.2m Horizontal
22mm 2.4m Vertical 1.8m Horizontal
28mm 2.4m Vertical 1.8m Horizontal

WARNING

Due care should be taken to prevent damage to copper press fittings and O-rings by heat transfer due to nearby brazing. High temperature can anneal copper pipe making it too soft for press fit along with causing excessive heat damage to the HNBR O-rings. Each fitting and O-ring should be inspected before installation to confirm that there is no damage or defects due to storage or transportation. Do not use fitting if any visual defects are noted.

GAS

GAS Metric Fittings

CPG410 Gas Straight Coupler



CODE	SIZE	PACK QTY
CPG410001	15mm	10
CPG410002	22mm	10
CPG410003	28mm	10

CPG410 Gas Straight Reducer



CODE	SIZE	PACK QTY
CPG410021	22mm x 15mm	10
CPG410031	28mm x 15mm	10
CPG410032	28mm x 22mm	10

CPG410 Gas Slip Coupler



CODE	SIZE	PACK QTY
CPG4100S1	15mm	10
CPG4100S2	22mm	10
CPG4100S3	28mm	10

CPG411 Gas Straight Coupler M.I x Press



CODE	SIZE	PACK QTY
CPG411001	½" M x 15mm Press	10
CPG411002	¾" M x 22mm Press	10
CPG411003	1" M x 28mm Press	10

CPG412 Gas Straight Coupler F.I x Press



CODE	SIZE	PACK QTY
CPG412001	½" F x 15mm Press	10
CPG412002	¾" F x 22mm Press	10
CPG412003	1" F x 28mm Press	10

CPG415 Gas Elbow



CODE	SIZE	PACK QTY
CPG415001	15mm	10
CPG415002	22mm	10
CPG415003	28mm	10
CPG415021	22mm x 15mm	10
CPG415031	28mm x 15mm	10
CPG415032	28mm x 22mm	10

CPG418 Gas Equal Tee



CODE	SIZE	PACK QTY
CPG418001	15mm	10
CPG418002	22mm	10
CPG418003	28mm	10

CPG418 Gas Reducing Tee



CODE	SIZE	PACK QTY
CPG418211	22mm x 15mm x 15mm	10
CPG418212	22mm x 15mm x 22mm	10
CPG418221	22mm x 22mm x 15mm	10
CPG418313	28mm x 15mm x 28mm	10
CPG418323	28mm x 22mm x 28mm	10
CPG418332	28mm x 28mm x 22mm	10

CPG419 Gas Fitting Reducer



CODE	SIZE	PACK QTY
CPG419021	22mm x 15mm	10
CPG419031	28mm x 15mm	10
CPG419032	28mm x 22mm	10

CPG425 Gas Obtuse Street Elbow



CODE	SIZE	PACK QTY
CPG425001	15mm	10
CPG425002	22mm	10
CPG425003	28mm	10

CPG435 Gas Street Elbow



CODE	SIZE	PACK QTY
CPG435001	15mm	10
CPG435002	22mm	10
CPG435003	28mm	10

CPG445 Gas Obtuse Bend



CODE	SIZE	PACK QTY
CPG445001	15mm	10
CPG445002	22mm	10
CPG445003	28mm	10

CPG451 Gas Stop End



CODE	SIZE	PACK QTY
CPG451001	15mm	10
CPG451002	22mm	10
CPG451003	28mm	10

Note: Fittings should be kept in original packaging to prevent O-ring lubrication drying out before use.

Note: Fittings should be kept in original packaging to prevent O-ring lubrication drying out before use.



Instantor[®]

Copper Press

TECHNICAL INFORMATION

PRESSING PROFILE:

M Profile - Sizes: 15mm, 22mm, 28mm

APPLICATION:

Instantor Gas Copper Press Fittings are designed to be used with half-hard copper tubes (R250) or hard copper tubes (R290) with a maximum diameter of 54mm according to GASTEC QA Approval Requirement 5. Instantor Gas Copper Press Fittings are suitable for domestic gas installations for the transport of gaseous fuels in accordance to the 2nd & 3rd family gases. The maximum operating pressure is 200mbar.

Instantor Gas Copper Press Fitting are for gas only and are stamped with GASTEC in yellow markings on the body of each fitting. The O-rings are constructed from premium HNBR which are approved to EN549 & EN682 for use in gas fuel services and are yellow in colour for identification purposes.

SYSTEM TESTING:

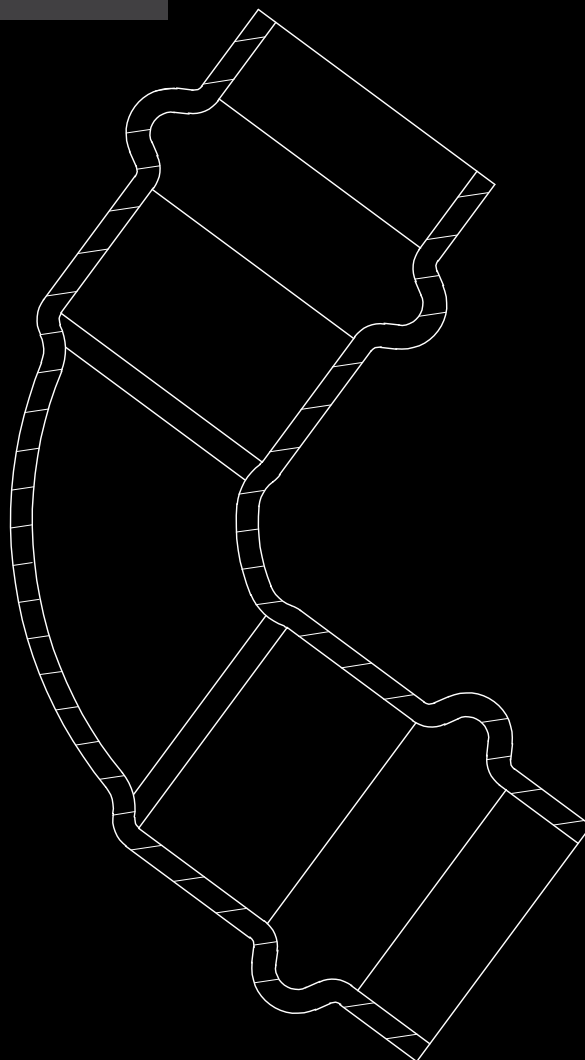
Pressure testing on Instantor Copper Press fittings should normally be carried out using air/leak detection spray in accordance with local regulations and standards e.g., IS813 and RGI.

All joints installed in the system must remain completely visible and accessible until the system has been successfully leak and pressure tested. Final inspections should then be carried out to confirm system is leak tight and sound.

GUARANTEE:

Copper is known for its durability, corrosion resistance, thermal conductivity, and hygienic qualities. In some cases, (sleeving/marking is required - follow local building standards e.g IS813) external protection may be required to protect against corrosive conditions.

Instantor Copper Press fittings are guaranteed for 25 years provided they have been installed following correct procedure within operating conditions for which they are designed, by a fully competent person using the correct pressing equipment which holds a valid calibration certificate.



CERTIFICATION:



Imperial & Metric Instantor Gas Copper Press
KIWA GASTEC QA Approval Number: 110435/01





Instantor[®]

R-Press Fittings



INSTANTOR R-PRESS FITTINGS

15
YEAR
WARRANTY

The Safer, Faster Way to join air conditioning and refrigeration pipework.

Instantor's new R-Press system is a game-changer for ACR installers. Designed for high-pressure applications up to 48 bar, including refrigeration, air conditioning, heat pumps (refrigeration side), VRF, and VRV systems – R-Press fittings deliver clean, reliable joints without the hassle of flame-based methods.

Because it's flame-free, there's no need for hot work permits, fire watches, or lengthy risk assessments. That means quicker installs, less downtime, and safer working conditions, especially in tight or sensitive spaces.

Instantor R-Press fittings use a precision-engineered 3-point press design for strong, permanent joints you can count on. It's a mechanical joint, so there's no need for nitrogen purging, which keeps your systems cleaner and your installs simpler.

Built with the quality and reliability you expect from Instantor, R-Press fittings help reduce callbacks and keep projects moving efficiently. They're also designed with installers in mind, no fuss, no flame, just dependable performance.





Instantor®

R-Press Fittings

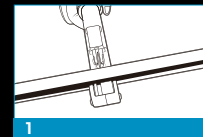


FEATURES

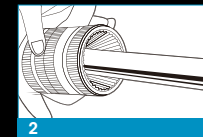
- **COMPLIANCE** - UL 207 Certified
- **FLAME FREE INSTALL** - no fire permit, no fire risk
- **MECHANICAL JOINT** - no nitrogen purge needed
- **SAVE ON TIME** - 35% faster install than traditional methods
- **EXTENSIVE OFFERING** - Available from 1/4" to 1 1/8"

Further technical information available, see page 60

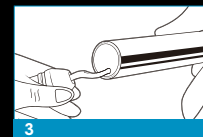
INSTALLATION INSTRUCTIONS



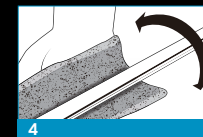
1



2



3



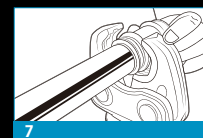
4



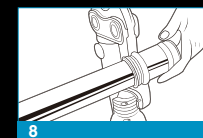
5



6



7



8

1. Cut the tube squarely, ensuring a clean and perpendicular edge. The tube must be free from defects or scratches that could compromise joint integrity.

2. Use a deburring tool to remove burrs and sharp edges from both the inside and outside of the tube. This prevents damage to the sealing element.

3. Thoroughly clean the tube using a general-purpose hand pad or sand cloth in a rotating motion. Ensure the ends are free from scratches, oxidation, dirt, and debris.

4. Check the cleaned tube for remaining deep scratches or imperfections. If present, cut back to a clean section and repeat Steps 2 and 3.

5. Ensure the O-ring is correctly seated and that the fitting matches the tube size. Verify that all O-rings are present and undamaged.

6. Fully insert the tube into the fitting until it reaches the stop. Mark the insertion depth to detect any movement prior to pressing.

7. Align the pressing jaws squarely on the fitting. Ensure the correct size jaw is used and that the groove is positioned over the O-ring. The pipework must be properly aligned before pressing.

8. Depress and hold the tool's button to initiate the press. The cycle is complete when the jaws fully close and the piston retracts—do not repeat the pressing cycle. Once complete, release and remove the pressing jaws from the fitting. Clearly mark the joint after pressing for easy identification and inspection prior to system testing and insulation.



RP510 ACR Straight Coupler PxP



CODE	SIZE	PACK QTY
RP510100	1/4"	5
RP510200	3/8"	5
RP510300	1/2"	5
RP510400	5/8"	5
RP510500	3/4"	2
RP510600	7/8"	2
RP510700	1 1/8"	2

RP514 ACR Straight Swivel Union PxPFT



CODE	SIZE	PACK QTY
RP514100	1/4"	4
RP514200	3/8"	4
RP514300	1/2"	2
RP514400	5/8"	2
RP514500	3/4"	2

RP515 ACR 90° Elbow PxP



CODE	SIZE	PACK QTY
RP515100	1/4"	5
RP515200	3/8"	5
RP515300	1/2"	3
RP515400	5/8"	3
RP515500	3/4"	3
RP515600	7/8"	3
RP515700	1 1/8"	2

RP518 ACR Equal Tee PxPxP



CODE	SIZE	PACK QTY
RP518100	1/4"	3
RP518200	3/8"	3
RP518300	1/2"	3
RP518400	5/8"	2
RP518500	3/4"	2
RP518600	7/8"	2
RP518700	1 1/8"	1

RP519 ACR Reducing Coupler PxP



CODE	SIZE	PACK QTY
RP519210	3/8" x 1/4"	2
RP519310	1/2" x 1/4"	2
RP519320	1/2" x 3/8"	2
RP519410	5/8" x 1/4"	2
RP519420	5/8" x 3/8"	2
RP519430	5/8" x 1/2"	2
RP519530	3/4" x 1/2"	2
RP519540	3/4" x 5/8"	2
RP519630	7/8" x 1/2"	2
RP519640	7/8" x 5/8"	2
RP519650	7/8" x 3/4"	2
RP519740	1 1/8" x 5/8"	1
RP519750	1 1/8" x 3/4"	1
RP519760	1 1/8" x 7/8"	1

RP535 ACR 90° Street Elbow FTGxP



CODE	SIZE	PACK QTY
RP535100	1/4"	3
RP535200	3/8"	3
RP535300	1/2"	3
RP535400	5/8"	3
RP535500	3/4"	3
RP535600	7/8"	3
RP535700	1 1/8"	2

RP545 ACR 45° Obtuse Bend PxP



CODE	SIZE	PACK QTY
RP545100	1/4"	3
RP545200	3/8"	3
RP545300	1/2"	3
RP545400	5/8"	3
RP545500	3/4"	3
RP545600	7/8"	3
RP545700	1 1/8"	2

RP551 ACR Stop End PxCAP



CODE	SIZE	PACK QTY
RP551100	1/4"	3
RP551200	3/8"	3
RP551300	1/2"	3
RP551400	5/8"	2
RP551500	3/4"	2
RP551600	7/8"	2
RP551700	1 1/8"	1





Instantor®

R-Press Fittings



TECHNICAL INFORMATION

PRESSING PROFILE:

V - Sizes 1/4", 3/8", 1/2", 5/8", 3/4", 7/8", 1 1/8"

APPLICATION:

Instantor R-Press fittings are specifically designed for use in:

- Refrigeration systems
- Air conditioning systems
- The refrigeration side of heat pumps
- VRF (Variable Refrigerant Flow) and VRV (Variable Refrigerant Volume) systems

WARRANTY:

Instantor R-Press fittings are covered by a standard 1-year manufacturer's warranty from the date of purchase.

This warranty is extended to 15 years when installation is carried out by an installer who has:

- Successfully completed the official Instantor R-Press training program, and
- Obtained a valid Competency Certification issued by Instantor.

The extended warranty is subject to compliance with all installation guidelines, use of approved tools and materials, and adherence to best practices as outlined in Instantor's installation manual.

Maximum Rated Operating and Abnormal Pressure

700 psi / 48 bar . 4800 kPa

Continuous Operating Temperature

-40°F to 284°C / -40°C to 140°C

Vacuum Pressure Capability

200 Microns

Leak Tightness

Helium $\leq 7.5 \times 10^{-7}$ Pa.m³/s at +20°C, 10 bar

Burst Pressure

>3X Maximum operating and abnormal pressure
>2,100psig / >14400 kPa / >144bar

Size Availability

1/4", 3/8", 1/2", 5/8", 3/4", 7/8", 1 1/8"

FITTING MATERIALS:

Fitting Body: Refrigerant Grade Copper

(UNS C12200 min 99.9% pure)

O-Ring: HNBR



CERTIFICATION:



APPROVED REFRIDGERANTS:

R32	R125	R134a	R290	R404A
R407A	R407C	R407F	R407H	R410A
R454A	R454B	R438A	R448A	R449A
R454C	R452A	R452B	R507A	R600A
R452C	R1234yf	R1234ze		

COMPATABILITY:

Approved Lubricants:

POE, PAO, PVE, AB and MO

Approved Connections:

Copper to Copper

Approved Tube:

Copper tube conforming to
EN12735-1, ASTM B280, ASTM
B88, or ASTM B743

Approved Copper Tubing:

Hard Copper (Drawn) -

Type ACR, L, K

Soft Copper (Annealed)-

Type ACR, L, K



THE INSTANTOR STANDARD: PROVEN MATERIALS FOR UNMATCHED RELIABILITY

At Instantor, we believe that quality products start with quality materials. Which is why we're committed to using only the best, like CW617N brass, a trusted material linked to Instantor for 100 years.

We know that each and every fitting plays a critical role on the job, which is why we rely on premium resources to make ours. Whether it's CW617N brass compression fittings, 304 stainless steel tubes, or our EPDM O-rings, each material used is proven to stand the test of time.

These materials aren't just industry standards; they're our standards. By investing in proven, high-performance materials, we ensure that every Instantor product delivers the durability, safety, and reliability that installers can count on.



EMPOWERING THE NEXT GENERATION

At Instantor, we're all about investing in the next generation of plumbers. We know that today's apprentices are tomorrow's experts, and we want to make sure they're equipped not only with the tools of the trade but with the knowledge and confidence to use them effectively.

That's why we're giving apprentices the chance to get hands-on with the latest innovations in plumbing and heating technology. Let's face it – the industry's changing fast, and we want these future plumbers to stay ahead of the curve. Whether it's the latest press-fit tools or smart plumbing solutions, we're giving them early exposure so they'll know what's out there and what's coming next.

But it's not just about shiny new tools. We're also helping apprentices get a grip on solid, current plumbing methods so they can handle real-world scenarios. By getting them involved in hands-on training, we're aiming to bridge the gap between theory and practice – helping them see what actually works in the field and, just as importantly, what doesn't.

Here's to building a stronger, smarter future for plumbing – one apprentice at a time.



UNRIVALLED EXPERTISE & SUPPORT

**You're on a job, knee deep in pipework,
and something's not right...**

There's nothing more frustrating than reaching out to a manufacturer for assistance and being passed onto a third-party support team, with long wait times, or often no response at all.

At Instantor, we have a dedicated, full-time employed after-sales team, assisting with training, technical product support, and after-sales support. So, should something come up that you need assistance with, we're on hand to help – should that be over the phone or visiting on-site for further inspection.

With a qualified team based on the ground, and extensive warranty terms, we've got your back from the first fitting to the last tighten.





Instantor[®]

Stainless Steel Press

INSTANTOR
STAINLESS STEEL PRESS

10
YEAR

Tough, Versatile, and Ready for Any Job.

Some jobs need a bit more than the standard kit, and that's where the Instantor Stainless Steel Press system shines. When you're dealing with high-demand projects that need durable materials or specialist settings, you'll need a solution that's tough, versatile, and built to last. Our stainless steel press fittings and pipes are made from 316L stainless steel, meaning they can take a beating and still come out on top.

Flame-free jointing? Check. Corrosion-resistant? Check. Certified to industry standards like WRAS, DVG, and BSI Kitemark? Absolutely. Whether you're working on water, gas, solar or steam, this system is designed to perform in a wide range of applications. It's tough enough for industrial use but sleek enough to look great in high-end commercial installs and with a 10-year guarantee, you can trust the Instantor Stainless Steel Press to provide unbeatable performance.

With sizes up to 108mm, the Instantor Stainless Steel Press system gives you the flexibility to tackle any job. Plus, with no need for hot work permits, you can avoid all the paperwork and delays that come with traditional methods. It's durable, hygienic, and certified for every type of project, making it the go-to solution for all your needs.





Instantor®

Stainless Steel Press

FEATURES

- **CERTIFIED** - DVGW, BSI Kitemark & WRAS Certified
- **SUPERIOR MATERIAL** - 316L Stainless Steel provides corrosion, fire, heat and impact resistance
- **QUICK TO INSTALL** - Installation complete in just 5 steps. Cut, Calibrate, Check, Mark & Press
- **SUITABILITY** - Offering a solution for water, gas, oil, solar, hydrocarbon, compressed air & saturated steam applications
- **EXTENSIVE OFFERING** - Sizing from 15mm - 54mm suitable for domestic & commercial installations
- **AESTHETIC FINISH** - Desirable decorative stainless steel finish

INSTALLATION INSTRUCTIONS



CUT



CALIBRATE



CHECK



MARK



PRESS

1. Ensure that the fitting is the correct size for the tube being used. Cut the pipe to length using a good quality pipe cutter or rotary pipe cutter. It is important that pipe ends are clean, cut square, and the pipe is not deformed. High speed grinding wheels are not suitable.

2. All burrs and sharp edges should be removed. Using a de-burring tool to both the inside and outside of the pipe, leaving an external chamfer. Wipe the pipe end clean. The pipe ends should be free from scratches or scores for a distance not less than the socket depth. **NOTE:** A poorly calibrated pipe could damage the O-ring on insertion.

3. Before inserting the pipe, check the O-ring is seated, lubricated and free from damage. (Re-moisten O-ring with water if necessary**)

4. Insert the pipe fully into the socket of the fitting until it hits the pipe stop (or until pipes meet in the middle in fittings without a pipe stop). Mark the insertion depth with black marker to ensure the pipe has been fully inserted before pressing.

5. Making sure to select the correct profile Jaw ('V' for Imperial/Irish Instantor Copper Press), execute the press cycle. After the press tool cycle is complete remove the Press Jaws and check that the socket depth marking on the pipe has remained in place, adjacent to the mouth of the fitting.

NOTE: Fittings should be kept in original packaging to protect the O-ring and prevent drying out of lubrication.

TECHNICAL SUMMARY

Water Applications (EPDM O-ring)

Max Operating Pressure: 16 bar
Operating Temperature: -20°C to +110°C

Gas Applications (HNBR O-ring)

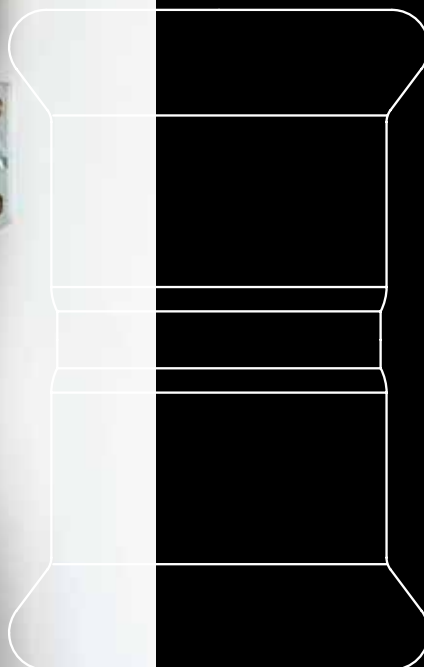
Max Operating Pressure: 5 bar
Operating Temperature: -20°C to +70°C

Oil, Solar, Hydrocarbon & Compressed Air Applications (FKM Green O-ring)

Max Operating Pressure: 16 bar
Operating Temperature: -20°C to +200°C

Saturated Steam Applications (FKM Red O-ring)

Max Operating Pressure: 7 bar
Operating Temperature: -10°C to +160°C
Further technical information available, see page 67



WATER

SP410 Straight Coupler

CODE	SIZE	PACK QTY
SP410001	15mm	20
SP410002	22mm	20
SP410003	28mm	20
SP410004	35mm	10
SP410005	42mm	4
SP410006	54mm	4



SP410 Straight Slip Coupler

CODE	SIZE	PACK QTY
SP4100S1	15mm	20
SP4100S2	22mm	20
SP4100S3	28mm	20
SP4100S4	35mm	10
SP4100S5	42mm	4
SP4100S6	54mm	4



SP411 Male Adaptor

CODE	SIZE	PACK QTY
SP411001	15mm x 1/2" MI	20
SP411012	15mm x 3/4" MI	20
SP411021	22mm x 1/2" MI	20
SP411002	22mm x 3/4" MI	20
SP411023	22mm x 1" MI	20
SP411032	28mm x 3/4" MI	20
SP411003	28mm x 1" MI	20
SP411034	28mm x 1 1/4" MI	20
SP411043	35mm x 1" MI	10
SP411004	35mm x 1 1/4" MI	10
SP411045	35mm x 1 1/2" MI	10
SP411054	42mm x 1 1/4" MI	4
SP411005	42mm x 1 1/2" MI	4
SP411065	54mm x 1 1/2" MI	4
SP411006	54mm x 2" MI	4



Large sizes also available. Please contact our sales team for more information.

SP412 Female Adaptor

CODE	SIZE	PACK QTY
SP412001	15mm x 1/2" FI	20
SP412012	15mm x 3/4" FI	20
SP412021	22mm x 1/2" FI	20
SP412002	22mm x 3/4" FI	20
SP412023	22mm x 1" FI	20
SP412032	28mm x 3/4" FI	20
SP412003	28mm x 1" FI	20
SP412034	28mm x 1 1/4" FI	20
SP412043	35mm x 1" FI	10
SP412004	35mm x 1 1/4" FI	10
SP412045	35mm x 1 1/2" FI	10
SP412054	42mm x 1 1/4" FI	4
SP412005	42mm x 1 1/2" FI	4
SP412065	54mm x 1 1/2" FI	4
SP412006	54mm x 2" FI	4



SP415 90° F.I x F.I Elbow

CODE	SIZE	PACK QTY
SP415001	15mm	20
SP415002	22mm	20
SP415003	28mm	20
SP415004	35mm	10
SP415005	42mm	4
SP415006	54mm	4



SP418 Equal Tee

CODE	SIZE	PACK QTY
SP418001	15mm	20
SP418002	22mm	20
SP418003	28mm	20
SP418004	35mm	10
SP418005	42mm	4
SP418006	54mm	4



SP418 Reducing Tee

CODE	SIZE	PACK QTY
SP418221	22mm x 22mm x 15mm	20
SP418331	28mm x 28mm x 15mm	10
SP418332	28mm x 28mm x 22mm	10
SP418441	35mm x 35mm x 15mm	10
SP418442	35mm x 35mm x 22mm	10
SP418443	35mm x 35mm x 28mm	10
SP418551	42mm x 42mm x 15mm	4
SP418552	42mm x 42mm x 22mm	4
SP418553	42mm x 42mm x 28mm	4
SP418554	42mm x 42mm x 35mm	4
SP418661	54mm x 54mm x 15mm	4
SP418662	54mm x 54mm x 22mm	4
SP418663	54mm x 54mm x 28mm	4
SP418664	54mm x 54mm x 35mm	4
SP418665	54mm x 54mm x 42mm	4



Large sizes also available. Please contact our sales team for more information.

SP419 M.I x F.I Reducer

CODE	SIZE	PACK QTY
SP419021	22mm x 15mm	20
SP419031	28mm x 15mm	20
SP419032	28mm x 22mm	20
SP419041	35mm x 15mm	10
SP419042	35mm x 22mm	10
SP419043	35mm x 28mm	10
SP419051	42mm x 15mm	4
SP419052	42mm x 22mm	4
SP419053	42mm x 28mm	4
SP419054	42mm x 35mm	4
SP419061	54mm x 15mm	4
SP419062	54mm x 22mm	4
SP419063	54mm x 28mm	4
SP419064	54mm x 35mm	4
SP419065	54mm x 42mm	4



SP425 45° M.I x F.I Elbow

CODE	SIZE	PACK QTY
SP425001	15mm	20
SP425002	22mm	20
SP425003	28mm	20
SP425004	35mm	10
SP425005	42mm	4
SP425006	54mm	4



SP435 90° M.I x F.I Elbow

CODE	SIZE	PACK QTY
SP435001	15mm	20
SP435002	22mm	20
SP435003	28mm	20
SP435004	35mm	10
SP435005	42mm	4
SP435006	54mm	4



SP445 45° F.I x F.I Elbow

CODE	SIZE	PACK QTY
SP445001	15mm	20
SP445002	22mm	20
SP445003	28mm	20
SP445004	35mm	10
SP445005	42mm	4
SP445006	54mm	4



SP430 Tee Press x Press x F.I

CODE	SIZE	PACK QTY
SP430001	15mm x 15mm x ½" FI	20
SP430221	22mm x 22mm x ½" FI	20
SP430002	22mm x 22mm x ¾" FI	20
SP430331	28mm x 28mm x ½" FI	10
SP430332	28mm x 28mm x ¾" FI	10
SP430003	28mm x 28mm x 1" FI	10
SP430441	35mm x 35mm x ½" FI	10
SP430442	35mm x 35mm x ¾" FI	10
SP430443	35mm x 35mm x 1" FI	10
SP430004	35mm x 35mm x 1¼" FI	10
SP430551	42mm x 42mm x ½" FI	4
SP430552	42mm x 42mm x ¾" FI	4
SP430553	42mm x 42mm x 1" FI	4
SP430005	42mm x 42mm x 1½" FI	4
SP430661	54mm x 54mm x ½" FI	2
SP430662	54mm x 54mm x ¾" FI	2
SP430663	54mm x 54mm x 1" FI	2
SP430006	54mm x 54mm x 2" FI	2



SP440 Flanged Adaptor PN16

CODE	SIZE	PACK QTY
SP440001	15mm	4
SP440002	22mm	4
SP440003	28mm	4
SP440004	35mm	4
SP440005	42mm	4
SP440006	54mm	4



SP451 Stop End

CODE	SIZE	PACK QTY
SP451001	15mm	20
SP451002	22mm	10
SP451003	28mm	10
SP451004	35mm	10
SP451005	42mm	4
SP451006	54mm	4



SP400 Pre-formed Pipe Bridge

CODE	SIZE	PACK QTY
SP400011	15mm	20
SP400012	22mm	20
SP400013	28mm	10

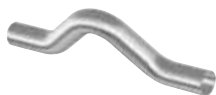


Large sizes also available. Please contact our sales team for more information.

Large sizes also available. Please contact our sales team for more information.

SP400 Pipe Bridge

CODE	SIZE	PACK QTY
SP400014	15mm	20
SP400015	22mm	20
SP400016	28mm	10



SPU11 Male Union Connector

CODE	SIZE	PACK QTY
SPU11001	15mm x ½" MI	20
SPU11012	15mm x ¾" MI	20
SPU11023	22mm x 1" MI	20
SPU11002	22mm x ¾" MI	20
SPU11003	28mm x 1" MI	20
SPU11034	28mm x 1¼" MI	20
SPU11004	35mm x 1¼" MI	10
SPU11005	42mm x 1½" MI	4
SPU11006	54mm x 2" MI	2



SPU12 Female Union Connector

CODE	SIZE	PACK QTY
SPU12001	15mm x ½" FI	20
SPU12012	15mm x ¾" FI	20
SPU12023	22mm x 1" FI	20
SPU12002	22mm x ¾" FI	20
SPU12003	28mm x 1" FI	20
SPU12034	28mm x 1¼" FI	20
SPU12004	35mm x 1¼" FI	10
SPU12005	42mm x 1½" FI	4
SPU12006	54mm x 2" FI	2

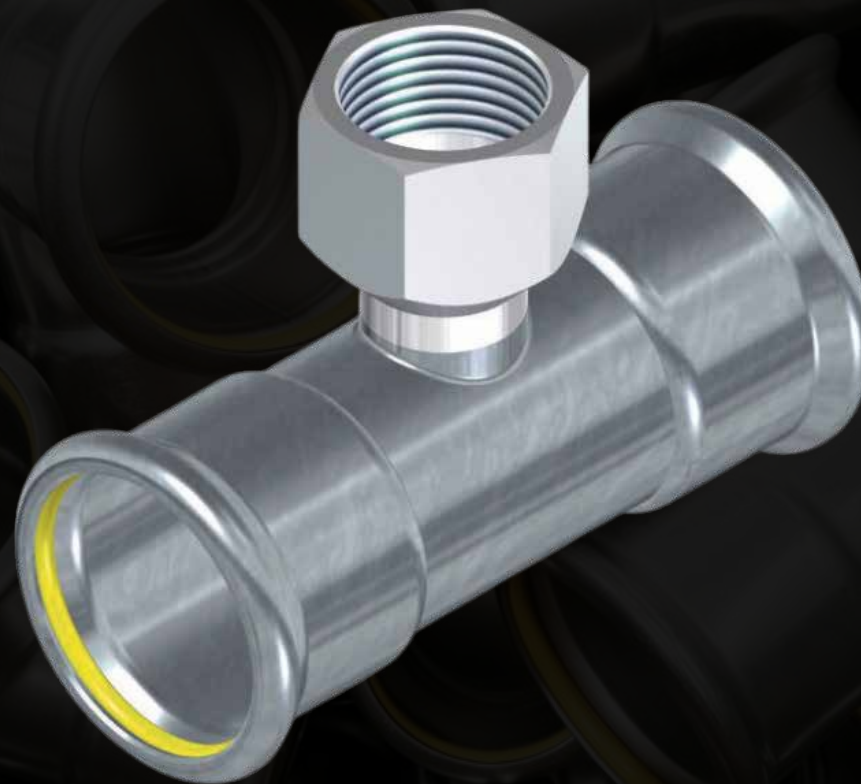


Elongation Compensator

CODE	SIZE	PACK QTY
SP410111	15mm	1
SP410112	22mm	1
SP410113	28mm	1
SP410114	35mm	1
SP410115	42mm	1
SP410116	54mm	1



Large sizes also available. Please contact our sales team for more information.



GAS

GAS

SPG410 Gas Straight Coupler

CODE	SIZE	PACK QTY
SPG410001	15mm	20
SPG410002	22mm	20
SPG410003	28mm	20
SPG410004	35mm	10
SPG410005	42mm	4
SPG410006	54mm	4



SPG410 Gas Straight Slip Coupler

CODE	SIZE	PACK QTY
SPG4100S1	15mm	20
SPG4100S2	22mm	20
SPG4100S3	28mm	20
SPG4100S4	35mm	10
SPG4100S5	42mm	4
SPG4100S6	54mm	4



SPG411 Gas Male Adaptor

CODE	SIZE	PACK QTY
SPG411001	15mm x 1/2" MI	20
SPG411012	15mm x 3/4" MI	20
SPG411021	22mm x 1/2" MI	20
SPG411002	22mm x 3/4" MI	20
SPG411023	22mm x 1" MI	20
SPG411032	28mm x 3/4" MI	20
SPG411003	28mm x 1" MI	20
SPG411034	28mm x 1 1/4" MI	20
SPG411043	35mm x 1" MI	10
SPG411004	35mm x 1 1/4" MI	10
SPG411045	35mm x 1 1/2" MI	10
SPG411054	42mm x 1 1/4" MI	4
SPG411005	42mm x 1 1/2" MI	4
SPG411065	54mm x 1 1/2" MI	4
SPG411006	54mm x 2" MI	4



SPG412 Gas Female Adaptor

CODE	SIZE	PACK QTY
SPG412001	15mm x 1/2" FI	20
SPG412012	15mm x 3/4" FI	20
SPG412021	22mm x 1/2" FI	20
SPG412002	22mm x 3/4" FI	20
SPG412023	22mm x 1" FI	20
SPG412032	28mm x 3/4" FI	20
SPG412003	28mm x 1" FI	20
SPG412034	28mm x 1 1/4" FI	20
SPG412043	35mm x 1" FI	10
SPG412004	35mm x 1 1/4" FI	10
SPG412045	35mm x 1 1/2" FI	10
SPG412054	42mm x 1 1/4" FI	4
SPG412005	42mm x 1 1/2" FI	4
SPG412065	54mm x 1 1/2" FI	4
SPG412006	54mm x 2" FI	4



SPG415 Gas 90° F.I x F.I Elbow

CODE	SIZE	PACK QTY
SPG415001	15mm	20
SPG415002	22mm	20
SPG415003	28mm	20
SPG415004	35mm	10
SPG415005	42mm	4
SPG415006	54mm	2



SPG418 Gas Equal Tee

CODE	SIZE	PACK QTY
SPG418001	15mm	20
SPG418002	22mm	20
SPG418003	28mm	10
SPG418004	35mm	10
SPG418005	42mm	4
SPG418006	54mm	2



SPG418 Gas Reducing Tee

CODE	SIZE	PACK QTY
SPG418221	22mm x 22mm x 15mm	20
SPG418331	28mm x 28mm x 15mm	10
SPG418332	28mm x 28mm x 22mm	10
SPG418441	35mm x 35mm x 15mm	10
SPG418442	35mm x 35mm x 22mm	10
SPG418443	35mm x 35mm x 28mm	10
SPG418551	42mm x 42mm x 15mm	4
SPG418552	42mm x 42mm x 22mm	4
SPG418553	42mm x 42mm x 28mm	4
SPG418554	42mm x 42mm x 35mm	4
SPG418661	54mm x 54mm x 15mm	2
SPG418662	54mm x 54mm x 22mm	2
SPG418663	54mm x 54mm x 28mm	2
SPG418664	54mm x 54mm x 35mm	2
SPG418665	54mm x 54mm x 42mm	2



Large sizes also available. Please contact our sales team for more information.

Large sizes also available. Please contact our sales team for more information.

SPG417 Gas Female Angle Adaptor

CODE	SIZE	PACK QTY
SPG417001	15mm x 1/2" FI	20
SPG417002	22mm x 3/4" FI	10
SPG417003	28mm x 1" FI	10
SPG417004	35mm x 1 1/4" FI	10



SPG419 Gas M.I x F.I Reducer

CODE	SIZE	PACK QTY
SPG419021	22mm x 15mm	20
SPG419031	28mm x 15mm	20
SPG419032	28mm x 22mm	20
SPG419041	35mm x 15mm	10
SPG419042	35mm x 22mm	10
SPG419043	35mm x 28mm	10
SPG419051	42mm x 15mm	4
SPG419052	42mm x 22mm	4
SPG419053	42mm x 28mm	4
SPG419054	42mm x 35mm	4
SPG419061	54mm x 15mm	4
SPG419062	54mm x 22mm	4
SPG419063	54mm x 28mm	4
SPG419064	54mm x 35mm	4
SPG419065	54mm x 42mm	4



SPG425 Gas 45° M.I x F.I Elbow

CODE	SIZE	PACK QTY
SPG425001	15mm	20
SPG425002	22mm	20
SPG425003	28mm	10
SPG425004	35mm	10
SPG425005	42mm	4
SPG425006	54mm	2



SPG435 Gas 90° M.I x F.I Elbow

CODE	SIZE	PACK QTY
SPG435001	15mm	20
SPG435002	22mm	20
SPG435003	28mm	10
SPG435004	35mm	10
SPG435005	42mm	4
SPG435006	54mm	2



SPG445 Gas 45° F.I x F.I Elbow

CODE	SIZE	PACK QTY
SPG445001	15mm	20
SPG445002	22mm	20
SPG445003	28mm	10
SPG445004	35mm	10
SPG445005	42mm	4
SPG445006	54mm	2



SPG430 Gas Tee Press x Press x F.I

CODE	SIZE	PACK QTY
SPG430001	15mm x 15mm x 1/2" FI	20
SPG430221	22mm x 22mm x 1/2" FI	20
SPG430002	22mm x 22mm x 3/4" FI	20
SPG430331	28mm x 28mm x 1/2" FI	10
SPG430332	28mm x 28mm x 3/4" FI	10
SPG430003	28mm x 28mm x 1" FI	10
SPG430441	35mm x 35mm x 1/2" FI	10
SPG430442	35mm x 35mm x 3/4" FI	10
SPG430443	35mm x 35mm x 1" FI	10
SPG430004	35mm x 35mm x 1 1/4" FI	10
SPG430551	42mm x 42mm x 1/2" FI	4
SPG430552	42mm x 42mm x 3/4" FI	4
SPG430553	42mm x 42mm x 1" FI	4
SPG430005	42mm x 42mm x 1 1/2" FI	4
SPG430661	54mm x 54mm x 1/2" FI	2
SPG430662	54mm x 54mm x 3/4" FI	2
SPG430663	54mm x 54mm x 1" FI	2
SPG430006	54mm x 54mm x 2" FI	2



SPG440 Gas Flanged Adaptor PN16

CODE	SIZE	PACK QTY
SPG440001	15mm	4
SPG440002	22mm	4
SPG440003	28mm	4
SPG440004	35mm	4
SPG440005	42mm	4
SPG440006	54mm	4



SPG451 Gas Stop End

CODE	SIZE	PACK QTY
SPG451001	15mm	20
SPG451002	22mm	10
SPG451003	28mm	10
SPG451004	35mm	10
SPG451005	42mm	4
SPG451006	54mm	4



Valve Connector With Swivel

CODE	SIZE	PACK QTY
SPGS12001	15mm x 1/2" FI	20
SPGS12002	22mm x 3/4" FI	20
SPGS12003	28mm x 1" FI	10
SPGS12004	35mm x 1 1/4" FI	10
SPGS12005	42mm x 1 1/2" FI	4
SPGS12006	54mm x 2" FI	4



Large sizes also available. Please contact our sales team for more information.

Large sizes also available. Please contact our sales team for more information.

PIPE

Instantor Stainless Steel Pipe - 5M Length

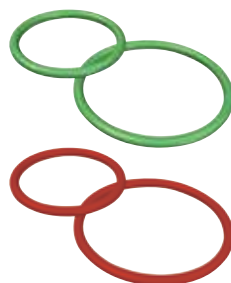
CODE	SIZE	BUNDLE QTY
ISSP111	15mm x 0.6mm	80
ISSP112	22mm x 0.7mm	61
ISSP113	28mm x 0.8mm	44
ISSP114	35mm x 1.0mm	44
ISSP115	42mm x 1.2mm	44
ISSP116	54mm x 1.2mm	37



O-RINGS

FKM O-Rings

CODE	SIZE	BUNDLE QTY
SP000001	15mm (Red)	10
SP000002	22mm (Red)	10
SP000003	28mm (Red)	10
SP000004	35mm (Red)	10
SP000005	42mm (Red)	10
SP000006	54mm (Red)	10
SP000007	15mm (Green)	10
SP000008	22mm (Green)	10
SP000009	28mm (Green)	10
SP000010	35mm (Green)	10
SP000011	42mm (Green)	10
SP000012	54mm (Green)	10



FKM O-ring (Green) Fluoroelastomer Rubber

- Applications: Oils, hydrocarbons, solar, fuels, technical liquids, and compressed air (oil purity class 0-X).
- Temperature Range: -20°C to +200°C dry app (hot air) or wet app (oils or primary solar energy circuits)
- Max Pressure: 16 Bar

FKM O-ring (Red) Fluoroelastomer Rubber

- Applications: Saturated steam and solar installations.
- Temperature Range: -10°C to +160°C (constant) Short peak exposure +170/180°C.
- Max Pressure: 7 Bar

Large sizes also available. Please contact our sales team for more information.



Instantor®
Stainless Steel Press

CERTIFICATION:



Instantor Stainless Steel Press Fittings & Pipe
WRAS Approval Number: 2011112



Instantor Stainless Steel Gas Press Fittings
BSI Kitemark Certificate Number: KM779147



Instantor Stainless Steel Gas Press Fittings
DVGW Certificate Number: DW-8511BU0128
Instantor Stainless Steel Pipe
DVGW Certificate Number: DW-7301BS0260

TECHNICAL INFORMATION

PRESSING PROFILE:

M Profile - Sizes: 15mm, 22mm, 28mm, 35mm, 42mm & 54mm

APPLICATION:

Black EPDM O-rings Ethylene rubber: -20°C to +100°C

Suitable for use in the following applications:

- Hot & cold potable water systems
- Fire protection services
- Water based heating systems
- Compressed air (oil free)

Yellow HNBR O-rings Nitrile rubber: -20°C to +70°C

Suitable for use in the following applications:

- GAS MOP1 & MOP5, GT1

SYSTEM TESTING:

The finished pipes undergo leak-tightness testing before being covered or painted. Water is used for testing in drinking water and heating installations. The results of the leak-tightness testing should be appropriately documented. If it is anticipated that the pipe installation will not be operational for an extended period after the leak-tightness test, and to protect the installation against potential corrosive processes (with a high probability of puncture corrosion), we recommend conducting the leak-tightness test using air instead of water (please verify whether corresponding authorization is required for conducting the air test).

Drinking Water Installations

The leak-tightness test for the installed pipes is conducted in accordance with current regulations. The pipes should be filled with filtered water to eliminate any air. This leak-tightness test is employed for both the preliminary and main test; the preliminary test may suffice for smaller parts of the installation, such as connection and distribution piping in wet areas.

Preliminary test: Apply a test pressure equivalent to the acceptable overpressure plus 5 bar. Repeat this test pressure twice for ten minutes, within a total interval of 30 minutes. After an additional 30 minutes, the test pressure should not have decreased by more than 0.6 bar (0.1 bar per 5 minutes).

Main test: Immediately following the preliminary test. The test lasts 120 minutes. After this 120-minute period, the pressure reading from the end of the preliminary test should not have fallen by more than 0.2 bar. There should be no visible signs of leakage in any part of the installation checked.

Air tightness test: If deemed appropriate, should be conducted with the corresponding authorization.

Heating Installations

The leak-tightness test for the pipes is conducted using water. In water-based heating systems, the test pressure is set at 1.3 times higher than the overall pressure at each point in the installation, with a minimum pressure increase of 1 bar. If possible, immediately after the leak-tightness test using cold water, the installation should be checked to verify its leak-tightness at its maximum temperature. This is accomplished by heating the water to the maximum temperature on which the calculation is based. The pipes are then flushed with drinking water before being put into operation.

GUARANTEE:

Instantor Stainless Steel Press Fittings and Pipes come with a 10-year warranty, covering defects in manufacture attributable to our areas of responsibility. The warranty is applicable when the joint is created using Instantor Stainless Steel Press fittings and pipes, and the joint is press-fitted under a pressure of not less than 19kN for pipe diameters of 15-28mm and 32kN for pipe diameters of 28-54mm, using an Instantor Press M-profile jaw. For diameters greater than 54mm, please consult our technical department. This warranty is not valid if the installation was performed by non-professionals or if the assembly instructions in our manual were not followed. Civil responsibility is limited to a period of ten years after the installation. In the event of damage, it must be communicated to us in writing within five days of the accident. Defective Instantor Stainless Steel Press Fittings and Pipes must be retained and made available to our technicians for the necessary checks in each case.



Instantor[®]

Tools

INSTANTOR
TOOLS



Tools that keep up with you - Every step of the way.

What's the point of having top-notch fittings if your tools aren't up to the job? At Instantor, we've made sure our press tools are just as solid as the rest of our gear. Built for the pros, these tools are designed to make your life easier, with kits you can customise to suit your job. Whether you need TH or M jaws, we've got the right tool for any press, no sweat.

Got a tricky spot to reach? No problem. Our angled jaws are perfect for those hard-to-reach areas. Need flexibility? The rotating head and single-handed operation mean you can work faster and more comfortably, without the usual strain.

The Instantor Press Tool features a direct-drive, long-life brushless motor for reliable, high-performance operation. A digital OLED screen displays fault indicators, battery life, and press counts, while the integrated work light helps you see clearly in dark installations. The swivel head makes tackling awkward angles a breeze.

You'll use the same trusted Instantor jaws and battery packs across the range – and with enhanced balance and ergonomics, the tool feels great in your hand. Plus, our extended 3-year warranty gives you peace of mind that lasts.

We also offer full calibration and servicing support for all Instantor tools – because we know how important it is to keep your gear in top shape. Built by plumbers, for plumbers – Instantor tools are made to last. No messing around.





Instantor®

Tools

FEATURES

- **UNIVERSAL APPLICATIONS** - Supplied with TH or M profile jaws
- **ERGONOMIC DESIGN** - Non-slip rubber grips, carry strap & single-handed operation
- **ROTATING HEAD** - Allowing you to reach tricky spots with ease
- **OLED Display** - Press count, battery power, working pressure, maintenance notes, & fault codes
- **CALIBRATION** - Calibration & servicing offered in-house by Instantor

JAW SUMMARY

TH Profile

- Suitable for use with Instantor Press System
- Jaw sizes range from 16mm - 63mm

M Profile

- Suitable for use with Instantor Copper Press Fittings (metric) & Instantor Stainless Steel Press
- Jaw sizes range from 15mm - 54mm
- Angled jaw sizes range from 15mm & 22mm

CALIBRATION & SERVICING

IT2030 INSTANTOR MINI PRESS TOOL

- Calibration due every 12 months / 20,000 cycles

IT2040 INSTANTOR LARGE PRESS TOOL

- Calibration due every 12 months / 30,000 cycles

Contact techsupport@instantor.co.uk to book your Instantor Press Tool Calibration and service.



TH PROFILE

Mini Mechanical Press Tool - TH Kit

CODE	CONTENTS
IT2030THK	18V Mini Mechanical Press Tool 16, 20, 26 & 32mm TH Jaws 2 x 4.0Ah Batteries Storage Case Output - 19kN



Mini Press Tool - TH Jaws

CODE	SIZE
IT20022	16mm TH
IT20023	20mm TH
IT20024	26mm TH
IT20025	32mm TH



Large Press Tool 18V - TH Kit

CODE	CONTENTS
IT2040THK	18V Press Tool 40, 50 & 63mm M Jaws Adaptor Tongs (Required for 50 & 63mm Jaws) 2 x 4.0Ah Batteries Storage Case Output - 32kN



Large Press Tool - TH Jaws

CODE	SIZE
IT20026	40mm TH
IT20027*	50mm TH Jaw Ring
IT20028*	63mm TH Jaw Ring
IT20029	Adaptor Tong for 50 & 63mm

*Requires Adaptor Tong IT20029



TH Jaw Case

CODE	CONTENTS
IT20050THK	16, 20, 26 & 32mm Jaws & Case
IT20050	Case Only



M PROFILE

Mini Mechanical Press Tool - M Kit

CODE	CONTENTS
IT2030MK	18V Mini Mechanical Press Tool 15, 22 & 28mm M Jaws 2 x 4.0Ah Batteries Storage Case Output - 19kN



Mini Press Tool - M Jaws

CODE	SIZE
IT20030	15mm M
IT20031	22mm M
IT20032	28mm M



Large Press Tool 18V - M Kit

CODE	CONTENTS
IT2040MK	18V Press Tool 35, 42 & 54mm M Jaws Adaptor Tongs (Required for 42 & 54mm Jaws) 2 x 4.0Ah Batteries Storage Case Output - 32kN



Large Press Tool - M Jaws

CODE	SIZE
IT20033	35mm M
IT20034*	42mm M Jaw Ring
IT20035*	54mm M Jaw Ring
IT20029	Adaptor Tong for 42 & 54mm

*Requires Adaptor Tong IT20029



M Jaws - Angled

CODE	SIZE
IT20065	Adaptor
IT20063	15mm M - Angled
IT20064	22mm M - Angled



M Jaw Case

CODE	CONTENTS
IT20050MK	15, 22 & 28mm Jaws & Case
IT20050	Case Only



ACCESSORIES

4.0Ah Battery

CODE	DESCRIPTION
IT20042	Spare 4.0Ah Battery



Drill Pipe Reamers

CODE	DESCRIPTION
IP20050	Full Kit incl. 16, 20, 26 & 32 mm + Manual T-Handle
IP20051	16mm Drill Reamer
IP20052	20mm Drill Reamer
IP20053	26mm Drill Reamer
IP20054	32mm Drill Reamer
IP20066	40mm Drill Reamer
IP20067	50mm Drill Reamer
IP20068	63mm Drill Reamer
IP20059	Manual T-Handle



Manual Pipe Reamer

CODE	DESCRIPTION	BOX QTY
IP20010	16mm – 26mm	40
IP20011	20mm – 32mm	30



Pipe Cutter

CODE	SIZE
IP20016	Up to 32mm
IP20009	Up to 63mm



Tube Cutter

CODE	SIZE
900115	15mm / ½"
900122	22mm
900121	¾"
900117	28mm
900123	1"



PAKTERMO

by  Instantor®

CORRUGATED STAINLESS STEEL TUBE & FITTINGS

10
YEAR

Cut Time, Not Corners - Gas Installs Made Simple.

Installing gas systems doesn't have to be a headache. With Paktermo by Instantor, you'll get the job done up to 70% faster. Paktermo's corrugated stainless steel tubes and brass fittings make gas installs a walk in the park. Fewer tools are needed, and with no split rings or PTFE tape, you can forget about all the fiddly bits that slow you down.

Whether you're working inside or out, Paktermo's got you sorted. It's safer, more reliable, and with heat-shrink sleeves making installs a breeze, you'll get a perfect fit every time. Plus, the fittings are reusable, so you're cutting down on waste and saving a few quid too.

Here's the deal - all components have to be Paktermo branded to guarantee a perfect fit. Our fittings come with an 8mm spacer to make pipe placement a doddle, and with a 10-year guarantee, you can trust this system to last. Plus, by cutting out extra steps and tools, you'll be working more safely and conveniently than ever before.

With Paktermo by Instantor, you're getting more than just materials - you're getting faster installs, fewer tools, and zero hassle. It's a system built to make your life easier, letting you focus on getting the job done right, the first time, every time.



PAKTERMO

by  Instantor®

INSTALLATION INSTRUCTIONS



1. Trim the tubing to the desired length using a tube cutters positioned between two corrugations. Gradually increase roller pressure after each turn. If the tube end isn't smooth and contains burrs, trim it again.



2. Place the sleeve remover tool around the tube, ensuring it's approximately 80mm from the cut end. Rotate it at least three times to slice through the outer layer while preserving the inner covering intact.



3. To remove the outer sleeve, firmly hold one end with one hand, and twist and pull it off the pipe with your other hand.



4. Use a utility knife or a sleeve remover tool to cut the inner cover from the tubing end. Cut at the 6th corrugation for DN15, DN20, DN25, and DN32, and at the 5th corrugation for DN40 and DN50. Pay close attention to the number of corrugations.



5. Insert the tube into the fittings securely until the metal part of the tube is no longer visible.



6. Remove the yellow rings between the nut and fitting.



7. Hand-tighten the nut after inserting the tube into the fittings. Then, use a wrench to further tighten the nut. Ensure that the tubing remains fixed while tightening the nut. Tighten the nuts until they are securely in place ensuring not to over tighten.



8. Trim the heat shrink tube to match the length needed to cover the fittings and pipe connection area. Once the end connection is assembled, slide the heat shrink tube onto it.
NB: Minimum length of 300mm heat shrink required to ensure full protection of fitting & tube.



9. Apply a hot air gun to shrink the tube over the pipe and fittings.



10. Trim and tidy up the heat shrink parts that extend toward the teeth of the fittings using a utility knife.

PAKTERMO

Fittings

Straight Coupler

CODE	SIZE
P26.F2.01	DN15
P26.F2.02	DN20
P26.F2.03	DN25
P26.F2.04	DN32
P26.F2.05	DN40
P26.F2.06	DN50



Male Connector

CODE	SIZE
P26.F1.01	DN15 x R 1/2"
P26.F1.06	DN20 x R 1/2"
P26.F1.02	DN20 x R 3/4"
P26.F1.03	DN25 x R 3/4"
P26.F1.04	DN25 x R 1"
P26.F1.07	DN32 x R 1"
P26.F1.05	DN32 x R 1 1/4"
P26.F1.21	DN40 x R 1 1/2"
P26.F1.24	DN50 x R 2"



Female Connector

CODE	SIZE
P26.FM.01	DN15 x 1/2"F
P26.FM.07	DN20 x 1/2"F
P26.FM.02	DN20 x 3/4"F
P26.FM.08	DN25 x 1/2"F
P26.FM.03	DN25 x 3/4"F
P26.FM.04	DN25 x 1"F
P26.FM.09	DN32 x 3/4"F
P26.FM.06	DN32 x 1"F
P26.FM.05	DN32 x 1 1/4"F



Copper Compression Straight

CODE	SIZE
P26.F25.01	DN 15 x 15mm
P26.F25.02	DN 20 x 15mm
P26.F25.03	DN 20 x 22mm
P26.F25.04	DN 25 x 22mm
P26.F25.05	DN 25 x 28mm
P26.F25.06	DN 32 x 28mm
P26.F25.07	DN 32 x 35mm
P26.F25.08	DN 32 x 22mm



Tee

CODE	SIZE
P26.F3.01	DN 20 x 15 x 20mm
P26.F3.02	DN 20 x 20 x 20mm
P26.F3.03	DN 25 x 15 x 20mm
P26.F3.04	DN 25 x 25 x 25mm
P26.F3.05	DN 32 x 25 x 25mm
P26.F3.06	DN 25 x 20 x 25mm
P26.F3.07	DN 15 x 15 x 15mm
P26.F3.08	DN 20 x 15 x 15mm
P26.F3.10	DN 25 x 20 x 15mm
P26.F3.12	DN 25 x 20 x 20mm
P26.F3.13	DN 20 x 25 x 20mm
P26.F3.14	DN 25 x 25 x 20mm



Tube

CODE	SIZE
P26.D1.30	DN15 - 30M Coil
P26.D1.75	DN15 - 75M Coil
P26.D2.30	DN20 - 30M Coil
P26.D2.75	DN20 - 75M Coil
P26.D3.30	DN25 - 30M Coil
P26.D3.75	DN25 - 75M Coil
P26.D4.30	DN32 - 30M Coil
P26.D4.75	DN32 - 75M Coil
P26.D5.30	DN40 - 30M Coil
P26.D5.75	DN40 - 75M Coil
P26.D6.30	DN50 - 30M Coil
P26.D6.75	DN50 - 75M Coil



Packs

CODE	CONTENTS
Y68ST15D05	Duo Hose DN15x5M, 2 x Male Connection DN15 x R 1/2", 2 x 30cm DN15 Heat Shrink
Y68ST15D10	Duo Hose DN15x10M, 2 x Male Connection DN15 X R 1/2", 2 x 30cm DN15 Heat Shrink
Y68ST15D15	Duo Hose DN15x15M, 2 x Male Connection DN15 X R 1/2", 2 x 30cm DN15 Heat Shrink
Y68ST20D05	Duo Hose DN20x5M, 2 x Male Connection DN20 X R 3/4", 2 x 30cm DN20 Heat Shrink
Y68ST20D10	Duo Hose DN20x10M, 2 x Male Connection DN20 X R 3/4", 2 x 30cm DN20 Heat Shrink
Y68ST20D15	Duo Hose DN20x15M, 2 x Male Connection DN20 X R 3/4", 2 x 30cm DN20 Heat Shrink

Heat Shrink

CODE	SIZE
PLC.01	Ø40 DN15 - 3M Length
PLC.02	Ø50 DN20-25 - 3M Lengths
PLC.03	Ø70 DN32 - 3M Lengths
PLC.04	Ø80 DN40 - 3M Lengths

Tools

CODE	SIZE
PSA01	Sleeve Removal Tool DN15-DN25
PKA01	Pipe Cutter DN15-DN50



by  Instantor®

HEAT PUMP HOSES & PUSH-FIT FITTINGS

10
YEAR
WARRANTY

Smarter Heat Pump Installs Start Here.

Say goodbye to clunky, rigid pipework and hello to flexibility with PAKTERMO HP hoses – the no-fuss solution for fast, secure heat pump connections. Featuring a UV-resistant outer layer and closed-cell insulation to fend off the elements, these hoses help heat pump systems run efficiently by minimising heat loss and preventing condensation.

Supplied in ready-to-use 10m coils, they can be easily cut to length, ideal for tight installs close to the house wall. And with flexible corrugated pipework, you've got the freedom to position the outdoor unit exactly where it works best. Heat pumps generate vibration and pressure shifts during operation, but PAKTERMO HP hoses are built to handle it. The stainless steel construction absorbs vibration and pressure spikes, protecting connections and extending system life. And thanks to rust-resistant materials, you'll cut down on corrosion worries, keeping your install tight and reliable. From fast fit-outs to long-term peace of mind, these hoses deliver performance, flexibility, and simplicity, just the way it should be.

Push-Fit, Stress-Free.

Pair your PAKTERMO HP hoses with Paktermo Push-Fit fittings, and you've got a system that's as smart as it is simple. No fiddly parts, no extra steps, just push the fitting onto the pipe, tighten with a wrench, and you're good to go. It's a faster, cleaner way to connect, cutting install time by up to 50%. The secure seal keeps leaks locked out, and if you need to make changes later, disassembly is quick and tool-free. Designed for speed and built to last – pair them with PAKTERMO HP hoses for a seamless heat pump installation.



PAKTERMO

by  Instantor®

INSTALLATION INSTRUCTIONS



1. To install Paktermo by Instantor heat pump hoses, strip at least six grooves of the corrugated pipe to expose a clean section. Then push the fitting over the stripped pipe with firm pressure until you hear a clicking sound, indicating that the fitting is securely locked in place.



2. Remove the blue plastic ring located between the union nut and the fitting.



3. First, tighten the nut by hand after inserting the tube into the fitting. Then, using a wrench, further tighten the nut while keeping the tubing fixed in place. Tighten the nut until it is in abutment, but do not exceed the torque values specified in the table.

Tube Diameter	Assemble Torque Values (Nm)	
	Min.	Max.
32mm	100	130

TECHNICAL SPECIFICATIONS

Material: Stainless Steel 316L (1.4404)
Diameter Range: DN32
Temperature Range: -270°C + 600°C
Test Pressure: 1.5 times the max working pressure
Burst Pressure: 4 times the max working pressure
Standard: EN ISO 10380

DN	Inner Diameter	Outer Diameter	Tolerance	Minimum Bending Radius Static	Maximum Working Pressure at 20°C	Surface Area	Internal Volume
32mm / 1 ¼"	32mm	38.70mm	±0.5mm	40r min. mm	5bar	0.199 m²/m	0.930 dm³/m



Heat Pump Hoses & Push-fit Fittings

Heat Pump Corrugated Pipe

CODE	SIZE
11CGP32	DN 32 x 10M Coil

Male Connection

CODE	SIZE
Y68P50F105	DN 32 x 1 1/4" M
Y68P50F123	DN 32 x 1 1/2" M



Female Connection

CODE	SIZE
Y68P50FM05	DN 32 x 1 1/4" F
Y68P50FM12	DN 32 x 1 1/2" F



Union Connection

CODE	SIZE
Y68P50F204	DN 32 x DN 32



Insulated Tape

CODE	SIZE
Y68350021	3m x 75mm

Pipe Bracket

CODE	SIZE
15YD0032	DN 32





Instantor[®]

Brass Compression Fittings

INSTANTOR
BRASS COMPRESSION FITTINGS

25
YEAR

The Original Brass Compression Fittings – Built on Decades of Excellence.

Since 1926, Instantor has set the benchmark for Brass Compression Fittings, and we're not about to let that change. Made from high grade CW617N Brass, these fittings are built to last, packing decades of expertise into every piece.

Forget about fiddly soldering or welding – our compression fittings are all about quick and hassle-free installs. Just fit, tighten, and you're done. No leaks, no mess, no drama.

With a range that covers everything from 8mm to 54mm, and built to handle high pressures and temperatures, these fittings are ready for anything you throw at them. Whether it's a cozy home project or a beast of an industrial job, Instantor's Brass Compression Fittings have got you covered.

NSAI & WRAS certified? Check. Reliable plumbing? Absolutely. Grab Instantor Compression Fittings and get the job done right – no fuss, just solid, dependable performance.





Instantor®

Brass Compression Fittings

FEATURES

- **CERTIFIED** - KIWA, NSAI & WRAS approval
- **QUICK TO INSTALL** - Ensuring speed, simplicity & neatness
- **FLAME-FREE** - No need for soldering, welding, or hot works permits
- **PROVEN MATERIALS** - Manufactured using high quality CW617N brass
- **EXTENSIVE OFFERING** - Available in metric sizing from 8mm - 54mm

TECHNICAL SUMMARY

- **Max Operating Pressure:** 30°C – 16 Bar | 109°C – 6 Bar
- **Min operating Pressure:** 0 Bar
- **Max Operating Temperature:** 110°C
- **Min Operating Temperature:** -20°C (flowing water)
- **Material:** CW617N Brass



410 Straight Coupler C x C



CODE	SIZE	BOX QTY	PACK QTY
410077	8mm	-	10
410088	10mm	-	10
410099	12mm	-	10
410001	15mm	250	10
410002	22mm	110	10
410003	28mm	-	10
410004	35mm	-	L
410005	42mm	-	L
410006	54mm	-	L
410087	10 x 8mm	-	10
410097	12 x 8mm	-	10
410017	15 x 8mm	-	10
410098	12 x 10mm	-	10
410018	15 x 10mm	-	10
410318	15mm x 10mm (3/8")	-	-
410019	15 x 12mm	-	10
410021	22 x 15mm	-	10
410022	22mm x 3/4"	-	-
410031	28mm x 15mm	-	-
410032	28 x 22mm	-	10

411 Straight Coupler C x M.I.



CODE	SIZE	BOX QTY	PACK QTY
411077	8mm x 1/4"	10	10
411079	8mm x 3/8"	10	10
411071	8mm x 1/2"	10	10
411087	10mm x 1/4"	10	10
411089	10mm x 3/8"	10	-
411081	10mm x 1/2"	10	10
411097	12mm x 1/4"	10	10
411099	12mm x 3/8"	10	L
411091	12mm x 1/2"	10	L
411092	12mm x 3/4"	10	10
411017	15mm x 1/4"	10	10
411019	15mm x 3/8"	10	10
411001	15mm x 1/2"	10	10
411012	15mm x 3/4"	10	10
411021	22mm x 1/2"	10	-
411002	22mm x 3/4"	10	10
411023	22mm x 1"	10	10
411032	28mm x 3/4"	10	-
411003	28mm x 1"	10	-
411004	35mm x 1 1/4"	L	-
411005	42mm x 1 1/2"	L	-
411006	54mm x 2"	L	-

412 Straight Coupler C x F.I.



CODE	SIZE	BOX QTY	PACK QTY
412077	8mm x 1/4"	10	10
412071	8mm x 1/2"	10	10
412079	8mm x 3/8"	10	10
412087	10mm x 1/4"	10	10
412081	10mm x 1/2"	10	-
412089	10mm x 3/8"	10	10
412099	12mm x 3/8"	10	10
412091	12mm x 1/2"	10	L
412019	15mm x 3/8"	10	L
412001	15mm x 1/2"	10	10
412012	15mm x 3/4"	10	10
412021	22mm x 1/2"	10	10
412002	22mm x 3/4"	10	10
412023	22mm x 1"	10	10
412032	28mm x 3/4"	10	-
412003	28mm x 1"	10	10
412004	35mm x 1 1/4"	L	10
412005	42mm x 1 1/2"	L	-
412006	54mm x 2"	L	10

414 Straight Swivel Coupler C x F.I.



CODE	SIZE	BOX QTY	PACK QTY
414001	15mm x 1/2"	10	10

415 Elbow C x C



CODE	SIZE	BOX QTY	PACK QTY
415077	8mm	-	10
415088	10mm	-	10
415099	12mm	-	10
415001	15mm	-	10
415002	22mm	80	10
415003	28mm	-	10
415004	35mm	-	L
415005	42mm	-	L
415006	54mm	-	L
415098	12 x 10mm	-	10
415018	15 x 10mm	-	10
415019	15 x 12mm	-	10
415021	22 x 15mm	-	10
415032	28mm x 22mm	-	10

416 Elbow C x M.I.



CODE	SIZE	BOX QTY	PACK QTY
416077	8mm x 1/4"	10	10
416079	8mm x 3/8"	10	10
416071	8mm x 1/2"	10	10
416087	10mm x 1/4"	10	10
416089	10mm x 3/8"	10	-
416081	10mm x 1/2"	10	10
416099	12mm x 3/8"	10	10
416091	12mm x 1/2"	10	L
416017	15mm x 1/4"	10	L
416019	15mm x 3/8"	10	L
416001	15mm x 1/2"	10	10
416012	15mm x 3/4"	10	10
416021	22mm x 1/2"	10	10
416002	22mm x 3/4"	10	10
416023	22mm x 1"	10	10
416032	28mm x 3/4"	10	-
416003	28mm x 1"	10	10
416004	35mm x 1 1/4"	10	10
416005	42mm x 1 1/2"	10	-

417 Elbow C x F.I.



CODE	SIZE	BOX QTY	PACK QTY
417077	8mm x 1/4"	10	10
417079	8mm x 3/8"	10	10
417089	10mm x 3/8"	10	10
417081	10mm x 1/2"	10	10
417099	12mm x 3/8"	10	-
417001	15mm x 1/2"	10	10
417021	22mm x 1/2"	10	L
417002	22mm x 3/4"	10	L
417032	28mm x 3/4"	10	10
417003	28mm x 1"	10	10
417004	35mm x 1 1/4"	L	10
417005	42mm x 1 1/2"	10	10

P417 Elbow F.I. x Poly



CODE	SIZE	BOX QTY	PACK QTY
417012	15mm x 3/4"	-	10
417023	22mm x 1"	-	10

417W Wall Plate Elbow C x F.I.



CODE	SIZE	BOX QTY	PACK QTY
419001	15mm x 1/2"	-	10
419021	22mm x 1/2"	-	10

418 Equal Tees C x C x C



CODE	SIZE	BOX QTY	PACK QTY
418777	8mm	-	10
418888	10mm	-	10
418999	12mm	-	10
418001	15mm	-	10
418002	22mm	50	10
418003	28mm	-	10
418004	35mm	-	L
418005	42mm	-	L
418006	54mm	-	L

418 Reducing Tees C x C x C



CODE	SIZE	BOX QTY	PACK QTY
418887	10 x 10 x 8mm	-	10
418878	10 x 8 x 10mm	-	10
418889	10 x 10 x 12mm	-	10
418988	12 x 10 x 10mm	-	10
418998	12 x 12 x 10mm	-	10
418989	12 x 10 x 12mm	-	10
418991	12 x 12 x 15mm	-	10
418187	15 x 10 x 8mm	-	10
418188	15 x 10 x 10mm	-	10
418189	15 x 10 x 12mm	-	10
418181	15 x 10 x 15mm	-	10
418198	15 x 12 x 10mm	-	10
418118	15 x 15 x 10mm	-	10
418199	15 x 12 x 12mm	-	10
418119	15 x 15 x 12mm	-	10
418112	15 x 15 x 22mm	-	10
418211	22 x 15 x 15mm	-	10
418212	22 x 15 x 22mm	-	10
418221	22 x 22 x 15mm	-	10
418313	28 x 15 x 28mm	-	10
418331	28 x 28 x 15mm	-	10
418322	28 x 22 x 22mm	-	10
418323	28 x 22 x 28mm	-	10
418332	28 x 28 x 22mm	-	10
418443	35 x 35 x 28mm	-	10

Note: Products produced from brass are NOT suitable for use underground.

Note: Products produced from brass are NOT suitable for use underground.

420 Tee C x C x M.I.



CODE	SIZE	BOX QTY	PACK QTY
420002	22mm x 22mm x ¾"	-	10

421/P421 Wallplate Elbow F.I. x C



CODE	SIZE	BOX QTY	PACK QTY
421001	15mm x ½"	-	-
421002	22mm x ¾"	-	-

430 Tee C x C x F.I.



CODE	SIZE	BOX QTY	PACK QTY
430991	12mm x 12mm x ½"	-	10
430001	15mm x 15mm x ½"	-	10
430221	22mm x 22mm x ½"	-	10
430002	22mm x 22mm x ¾"	-	10
430003	28mm x 28mm x 1"	-	10

427 Swivel Elbow



CODE	SIZE	BOX QTY	PACK QTY
427001	15mm x ½"	-	10

448 Reducing Set



CODE	SIZE	BOX QTY	PACK QTY
448087	10mm x 8mm	-	10
448097	12mm x 8mm	-	10
448098	12mm x 10mm	-	10
448017	15mm x 8mm	-	10
448018	15mm x 10mm	-	10
448019	15mm x 12mm	-	10
448021	22mm x 15mm	-	10
448039	28mm x 12mm	-	10
448031	28mm x 15mm	-	10
448032	28mm x 22mm	-	10
448041	35mm x 15mm	-	10
448042	35mm x 22mm	-	10
448043	35mm x 28mm	-	10

450 Flanged Tank Connector with backnut



CODE	SIZE	BOX QTY	PACK QTY
450001	15mm	-	10
450002	22mm	-	10
450003	28mm	-	10
450004	35mm	-	L
450005	42mm	-	L
450006	54mm	-	L

451 Stop End



CODE	SIZE	BOX QTY	PACK QTY
451007	8mm	-	10
451008	10mm	-	10
451009	12mm	-	10
451001	15mm	-	10
451002	22mm	-	10
451003	28mm	-	10
451004	35mm	-	10
451005	42mm	-	10

467 Gate Valve C x C



CODE	SIZE	BOX QTY	PACK QTY
467001	15mm	-	10
467002	22mm	-	10
467003	28mm	-	10

471 Elbow with combined M.T. Plug C x C



CODE	SIZE	BOX QTY	PACK QTY
470003	28mm x 1"	-	L

871 Elbow with Combined M.T Plug M.I x C



CODE	SIZE	BOX QTY	PACK QTY
471002	22mm x ¾"	-	10
471003	28mm x 1"	-	L

472 Blank Cap and Washer



CODE	SIZE	BOX QTY	PACK QTY
472001	15mm	-	10
472002	22mm	-	10
472003	28mm	-	10
472004	35mm	-	L

478A Compression Nut



CODE	SIZE	BOX QTY	PACK QTY
478007	8mm	-	100
478008	10mm	-	100
478009	12mm	-	100
478001	15mm	-	100
478002	22mm	-	50
478003	28mm	-	50
478004	35mm	-	10
478005	42mm	-	-
478006	54mm	-	-

478B Compression Ring



CODE	SIZE	BOX QTY	PACK QTY
479007	8mm	-	100
479008	10mm	-	100
479009	12mm	-	100
479001	15mm	-	100
479002	22mm	-	100
479003	28mm	-	50
479004	35mm	-	L
479005	42mm	-	-
479006	54mm	-	-



Instantor[®]

Brass Compression Fittings

**INSTANTOR LEAD FREE BRASS -
COMPRESSION FITTINGS**

**25
YEAR**

Raising the bar once again for pure water & pure performance.

Instantor's new Lead-Free Brass compression fittings, are designed and manufactured to meet stricter health standards without compromising on performance. Made from premium CW511L brass, this next-gen range is engineered for modern plumbing needs – and are safe, strong, and seriously reliable.

With growing pressure to cut down on lead in drinking water, the new range is already ahead of the curve. reassuringly approved by the National Standards Authority of Ireland (NSAI) to EN 1254-2:2021 with NSF/ANSI/CAN 372 toxicology testing by KIWA, they deliver total confidence in both domestic and commercial installs across the UK and Ireland.

Designed to fit copper and PEX pipes, and available in popular imperial and metric sizes, these fittings are as versatile as they are compliant. No special tools, no messy installs - just a solid seal, every time.

We've taken nearly 100 years of compression fitting expertise and poured it into a cleaner, safer solution. Instantor's lead-free range offers the same trusted performance our customers count on, now with even greater peace of mind. Ready for tomorrow's standards, and built on proven quality - this is the new benchmark in plumbing fittings.

Go lead-free with Instantor.



FEATURES

CERTIFIED - NSAI & KIWA approved for drinking water use.

QUICK TO INSTALL - Flame-free, fast, and mess-free fitting.

PREMIUM MATERIALS - Manufactured from high-quality CW511L brass.

VERSATILE RANGE - Compatible with copper and PEX, in imperial and metric sizes.

TECHNICAL SUMMARY

Max Operating Pressure: 30°C - 16 Bar | 109°C - 6 Bar

Min Operating Pressure: 0 Bar

Max Operating Temperature: 110°C

Min Operating Temperature: -20°C (flowing water)

Material: CW511L Brass

Lead Free 410 Straight Coupler C x C



CODE	SIZE	PACK QTY
410001LF	15mm	10
410002LF	22mm	10
410003LF	28mm	10
410021LF	22mm x 15mm	10
410032LF	28mm x 22mm	10

Lead Free 411 Straight Coupler C x M.I.



CODE	SIZE	PACK QTY
411001LF	15mm	10
411002LF	22mm	10
411003LF	28mm	10
411012LF	15mm x 3/4"	10
411021LF	22mm x 1/2"	10
411023LF	22mm x 1"	10

Lead Free 412 Straight Coupler C x F.I.



CODE	SIZE	PACK QTY
412001LF	15mm	10
412002LF	22mm	10
412003LF	28mm	10
412012LF	15mm x 3/4"	10
412023LF	22mm x 1"	10

Lead Free 415 Elbow C x C



CODE	SIZE	PACK QTY
415001LF	15mm	10
415002LF	22mm	10
415003LF	28mm	10

Lead Free 416 Elbow C x M.I.



CODE	SIZE	PACK QTY
416001LF	15mm	10
416002LF	22mm	10
416003LF	28mm	10

Lead Free 417 Elbow C x F.I.



CODE	SIZE	PACK QTY
417001LF	15mm	10
417002LF	22mm	10
417003LF	28mm	10

Lead Free 418 Equal Tee C x C x C



CODE	SIZE	PACK QTY
418001LF	15mm	10
418002LF	22mm	10
418003LF	28mm	10

Lead Free 418 Reducing Tee C x C x C



CODE	SIZE	PACK QTY
418212LF	22mm x 15mm x 22mm	10
418221LF	22mm x 22mm x 15mm	10
418331LF	28mm x 28mm x 15mm	10
418332LF	28mm x 28mm x 15mm	10

Lead Free 417W Wall Plate Elbow C x C x C



CODE	SIZE	PACK QTY
419001LF	15mm	10

Lead Free 427 Swivel Elbow



CODE	SIZE	PACK QTY
427001LF	15mm x 1/2"	10
427002LF	22mm x 3/4"	10

Lead Free 430 Tee C x C x F.I.



CODE	SIZE	PACK QTY
430001LF	15mm x 15mm x 1/2"	10
430002LF	22mm x 22mm x 3/4"	10

Lead Free 451 Stop End



CODE	SIZE	PACK QTY
451001LF	15mm	10
451002LF	22mm	10
451003LF	28mm	10



GET HANDS-ON AT OUR MOBILE TRAINING ACADEMY

While quality products play a huge part in efficient installs, so does quality workmanship. Your reputation? That's built on the standard of your work. So, why take any chances?

With an expanding range of press fittings and pipe for water and gas applications in domestic, commercial, and industrial settings, Instantor is dedicated to instilling confidence in installers on-site. It literally costs nothing to attend, you'll get hands on experience with our training demonstrators, and a competency training ID card posted to you once you've nailed it.

For water installs, training's a great bonus, but for gas? That's non-negotiable. According to IS813, you've got to be certified by the system manufacturer to work on gas jointing systems. We'll make sure you've got that box ticked.

And here's the best bit – you don't need to go out of your way. The Instantor Mobile Training Academy will be rolling into your local merchant or venue, so you can swing by without losing a full day on the job.



FIT & FORGET SOLUTIONS

We get it - your day is busy enough, and the last thing you need is a call back because something's gone wrong. The homeowner doesn't care if it's down to a faulty fitting, at the end of the day it's your reputation that could suffer.

It's on us as manufacturers to make sure that doesn't happen. At Instantor, we take product reliability seriously. No cutting corners. We invest in our products to give you 'fit & forget' solutions. No leaks, no hassle, no let downs.

Over at Instantor Works, we've got our own testing lab where we put every product through the wringer. We're talking 20 testing machines which are comparable to those used in major European and UK test centres, such as TUV and KIWA. If it doesn't pass, it doesn't leave the lab.

But reliability isn't just about the product. In-house is a dedicated new product development (NPD) team that are involved every step of the way, from idea to final product, and a technical team that are on hand to assist with any after-sales queries. Both teams listen to your feedback and tweak things to suit your needs.

We're all about delivering reliable solutions, every time.



TRUSTED TOOL, TRUSTED PERFORMANCE: BOOK YOUR CALIBRATION TODAY

You've got a tool that's with you through thick and thin. It handles every job, no matter how tricky, day in and day out. But let's be real—your Instantor Press Tool's reliability depends on a little TLC every now and then.

We get it—being without your go-to tool even for a day sounds like a hassle, especially when jobs are lined up. But keeping it pressing safely and accurately is worth it. A quick calibration every 12 months (or after 20,000 presses on the mini and 30,000 on the large tool) will save you time-consuming reworks down the line.

And don't worry, we won't send it off to some third-party. Our in-house technical team will handle everything. Plus, if dropping it off is too much hassle, we've got you covered with our collection and delivery service.

Keep your Instantor Press Tool in peak condition and avoid the headache of rework. Book a calibration with us and let's keep your tool—and your jobs—running smoothly.

Get in touch to lock it in: techsupport@instantor.co.uk





ELEMEX
IMMERSIONS



Durable Immersions for Every Application.

Since 1985, Elemex has been keeping things hot and hassle-free. Our immersion heaters are made from tough materials like Copper, Incoloy, and Titanium, so they can handle whatever water hardness you throw at them.

With over 30 years of experience behind us, we know what works. Our immersion heaters are available in both single and dual-element options, giving you the flexibility to choose the perfect fit for your job. Built tough and durable, they deliver reliable, long-lasting performance you can count on.

All heaters are certified to industry standards and come with a 2-year guarantee, so you can install them with peace of mind knowing they're built to last. From small-scale domestic installs to heavy-duty commercial applications, Elemex immersion heaters get the job done right, every time.

When it comes to reliability, Elemex is a name you can trust. Our heaters are built to last, backed by decades of manufacturing expertise, and designed to perform in any environment. It's the simple solution that plumbers have been turning to for decades - and with Elemex, you're guaranteed quality every time.

It's no-nonsense, get-the-job-done gear that's built to last.



Conforms to Low Voltage
Directive (LVD)
EN 60335-1:2002 &
EN 60335-2-73:2003



Dual immersion heaters are exclusively used in vertical orientation domestic water cylinders.

Dual heaters work in conjunction with a "sink/bath" switch, with a short element used to heat smaller quantities of water, and the longer one to heat the cylinder to the length of the element, i.e. 24", 27" etc. Heaters are pre-wired, and have either a 1m or 2m 4 core high temperature flexible cable fitted. All heaters are fitted with a control thermostat pre-set at 65°C and an externally resettable high limit cut-out to prevent the water reaching 98°C (in accordance with IS/EN60335-2-73)

Copper: Suitable for normal water areas
Incoloy: Suitable for normal to hard water
Titanium: Suitable for extreme use cases and available on request

Copper - Standard Range External Reset Button



CODE	THREAD SIZE	LENGTH	RATING	CABLE LENGTH
SIHD18ER	2 1/4" BSP	18"	2 / 2.85kW	1m
SIHD24ER	2 1/4" BSP	24"	2 / 2.85kW	1m
SIHD24ER/2	2 1/4" BSP	24"	2 / 2.85kW	2m
SIHD27ER	2 1/4" BSP	27"	2 / 2.85kW	1m
SIHD36ER	2 1/4" BSP	36"	2 / 2.85kW	1m

Incoloy - Premium Range External Reset Button



CODE	THREAD SIZE	LENGTH	RATING	CABLE LENGTH
SPID24ER	2 1/4" BSP	24"	2 / 2.85kW	1m
SPID27ER1	2 1/4" BSP	27"	2 / 2.85kW	1m
SPID36ER1	2 1/4" BSP	36"	2 / 2.85kW	1m

Single element immersion heaters are used in mainly horizontal orientation in domestic water cylinders.

All heaters are fitted with a control thermostat pre-set at 65°C and a resettable high limit cut-out to prevent the water reaching 98°C (in accordance with IS/EN60335-2-73). We offer heaters in several thread sizes, to fit all commonly used water cylinders, and in three different sheath materials, to suit various water qualities.

Copper: Suitable for normal water areas
Incoloy: Suitable for normal to hard water
Titanium: Suitable for extreme use cases and available on request

Copper

*Internal Reset Button



CODE	THREAD SIZE	LENGTH	RATING	MOUNTING
WH2B	2 1/4" BSP	11"	2.85kW	Horizontal



Incoloy

*Internal Reset Button

CODE	THREAD SIZE	LENGTH	RATING	MOUNTING
SWH38/UV/825	1 1/2" BSP	14"	2.85kW	Horizontal
WH38/UV	1 1/2" BSP	11"	2.85kW	Horizontal
SWH61	1 3/4" BSP	14"	2.85kW	Horizontal
WH61	1 3/4" BSP	11"	2.85kW	Horizontal
BIS11E	2 1/4" BSP	11"	2.85kW	Horizontal



Titanium

*Internal Reset Button

CODE	THREAD SIZE	LENGTH	RATING	MOUNTING
WH38/UVT	1 1/2" BSP	11"	2.85kW	Horizontal
WH60T	1 3/4" BSP	11"	2.85kW	Horizontal
BTS11E	2 1/4" BSP	11"	2.85kW	Horizontal
BTS27E	2 1/4" BSP	27"	2.85kW	Vertical

The Economiser (Willis) Heater:
For fast, economical domestic hot water

The **ELEMEX** Economiser is a compact, inexpensive unit designed to heat water quickly. It is intended for everyday domestic use, where relatively small quantities of hot water are required, for example: showers, dish washing, hair washing, etc.

The Economiser consumes no more power than a standard immersion heater, but saves on electricity by heating only the amount of water that you require.

The Economiser is fitted externally to the main hot water cylinder. Easy, user-friendly installation ensures the minimum of mess and disruption.



TYPICAL USE TIMES:

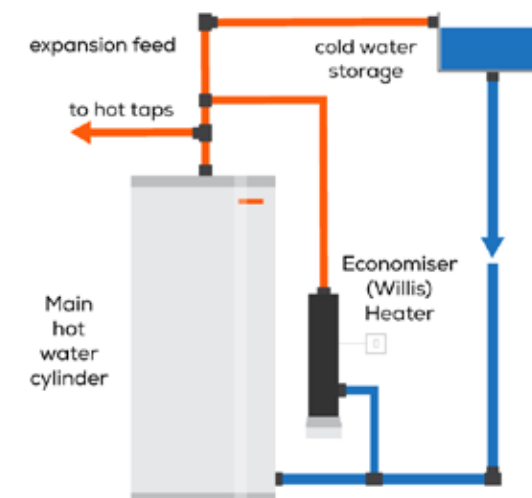
Shower: 10 minutes
Dish Washing: 5 minutes
Hair Washing: 5 minutes

Economiser (Willis)

CODE	THREAD SIZE	LENGTH	RATING	MOUNTING
SWILLIS	2 1/4" BSP	11"	2.85kW	Vertical

The unit comes pre-wired with a 1m flex cable

How it works



The Economiser is fitted in parallel to the main domestic hot water cylinder and heats the water from the top down. So, for a shower (typical requirement – 35 litres @ 40°C), the Economiser will heat only the top 35 litres of the cylinder in about 10 minutes, and the unit should then be switched off.

For maximum efficiency we recommend that the Economiser be fitted in conjunction with a timer (such as the **ELEMEX** T1). This will ensure that the heater is switched off after the required time. You can then set it and forget it.

Rod thermostats are available in two main types: > Control only > Combination Control & Cut-Out

Both are used in domestic immersion heaters, and are made in three stem lengths (measured underneath the head) of 7" (178mm), 11" (279mm), and 18" (457mm). Both have 7.5mmØ stems, designed to fit into a 5/16" (7.9mm) i.d tube. The control thermostats are factory pre-set at 60°C and should be used in conjunction with a separate over-temperature device in domestic applications. The combination types have two separate sets of contacts, one adjustable and one factory set, giving a one piece compliance with IS/EN 60335-2-73.

Control Only

7.5mm Stem Diameter



CODE	STEM LENGTH	RANGE °C	PRE-SET °C	CUT-OUT °C	CURRENT RATING
WH14	7"	40-80°C	60°C	N/A	15A
WH15	11"	40-80°C	60°C	N/A	15A
WH16	18"	40-80°C	60°C	N/A	15A

Control & Cut-Out

7.5mm Stem Diameter



CODE	STEM LENGTH	RANGE °C	PRE-SET °C	CUT-OUT °C	CURRENT RATING
WH14CH	7"	0-65°C	N/A	89°C	16A
WH15CV	11"	0-65°C	N/A	89°C	16A
WH16CV	18"	0-65°C	N/A	89°C	16A

Control & Cut-Out Misc Replacement Stats

6mm Stem Diameter



CODE	STEM LENGTH	RANGE °C	PRE-SET °C	CUT-OUT °C	CURRENT RATING
TSE	11"	10-70°C	N/A	80°C	16A
WH15RTS	11"	10-70°C	N/A	90°C	16A
WH15TT	11"	10-65°C	N/A	75°C	16A

We offer a comprehensive range of accessories for the installation and control of our immersion heaters.

- All immersion heaters will require a gasket or 'O' ring, and while these are supplied with the heater kit as standard, spares or replacements will often be needed.
- Most of our domestic heaters are installed in water cylinders with a pre-fitted threaded entry, but where it is necessary to fit a heater through a plain hole in a vessel wall, we offer flanges and backnuts for all common sizes.
- Vertically mounted immersion heaters generally have an 86mm A/F hex flange, larger than most adjustable wrenches can accommodate, and we offer low cost spanners to aid fitting, allowing uniform tightening without distorting the head or receptacle.
- Our heater timer provides a low cost means of short burst water heating, and eliminates the perennial problem of "forgetting to turn off the immersion", thus providing dramatic savings in running costs.

Gaskets



CODE	SIZE	DIMENSIONS (mm)
WH10B	1½" BSP	49 x 71 x 2
WH10C	1¾" BSP	53 x 77 x 2
WH10/1	2¼" BSP	66 x 82 x 2

Backnuts

For fitting to an open topped or accessible vessel



CODE	SIZE	DIMENSIONS (mm)
044005	1½" BSP	-
BN24	2¼" BSP	-

Plugs



CODE	SIZE	DIMENSIONS (mm)
074006	1¾" BSP	-
920100	2¼" BSP	-

'O' Rings



CODE	SIZE	DIMENSIONS (mm)
G024	1½" BSP	37 x 43 x 3
G020	1¾" BSP	49 x 56 x 3.5
G022	2¼" BSP	60 x 67 x 3.5

2 Part Flange

For fitting to a closed vessel from the outside



CODE	SIZE	DIMENSIONS (mm)
WH11	2¼" BSP	-

Spanners



CODE	SIZE	TYPE
900032	86mm A/F	Flat

Immertec®

Immersions

IMMERTEC
IMMERSIONS

2
YEAR
WARRANTY

Tough, Reliable, and Ready to get the Job Done.

Looking for immersion heaters that are tough as nails? Since 2015, Immertec has been cranking out heaters that can take the heat and keep going. Whether it's soft or hard water, residential or commercial installations, Immertec heaters are up to the task, no matter the conditions.

With both single and dual-element options, Immertec gives you the flexibility to choose the right heater for the job. Made from premium materials, our heaters are built to withstand serious use. We don't mess around when it comes to durability - our heaters are crafted for endurance.

Plus, with a 2-year guarantee, you get that extra reassurance that your installs are covered. From small domestic jobs to large commercial installs, these immersion heaters are designed to handle whatever you throw at them. And when it comes to getting the job done quickly, Immertec heaters are designed to be easy to install, saving you time and effort on-site.

These are no-nonsense heating solutions that keep things simple and stress-free. Built tough, tested to last, and designed with installers in mind, Immertec immersion heaters are the perfect choice for pros who want products they can trust.



CE Conforms to Low Voltage
Directive (LVD)
EN 60335-1:2002 &
EN 60335-2-73:2003

Immertec®

Immersions



Dual Element Copper Immersion
Heaters with 1m / 2m Fitted Cable

CODE	LENGTH	CABLE	STATS	PACK QTY
710530K	24"	1M	1	20
710531K	27"	1M	1	20
710532K	36"	1M	1	12
710543K	24"	2M	1	20
710544K	27"	2M	1	20
710546K	36"	2M	1	12



Single Element Copper
Immersion Heaters with 1m / 2m
Fitted Cable to EN60335-2-73

CODE	LENGTH	CABLE	STATS	ELEMENT	PACK QTY
710536K	11"	1M	1	Single	20
710547K	11"	2M	1	Single	20
710457K	11"	No Cable	1	Single	20
710458K	18"	No Cable	1	Single	20
710459K	27"	No Cable	1	Single	20

CE All Copper Immertec products are CE approved and conforms to
Low Voltage Directive (LVD) EN 60335-1:2002 & EN 60335-2-73:2003



Dual & Single Incoloy Immersion Heaters
with 2m Fitted Cable

CODE	LENGTH	CABLE	STATS	ELEMENT	PACK QTY
710548K	11"	2M	1	Single	20
710537K	24"	2M	1	Dual	20
710542K	27"	2M	1	Dual	20
710538K	36"	2M	1	Dual	12

All Dual Heaters are also available in
Incoloy Sheathed elements. Guaranteed for 3 years.



Replacement Thermostat

CODE	LENGTH	MATERIAL	PACK QTY
710441	7"	Copper	10
710442	11"	Copper	10
710440	18"	Copper	10

The Economiser Rapid Heater



CODE	SIZE
920120K	Mini Copper Cylinder Complete
920121	Can only

Immersion Heater Plugs



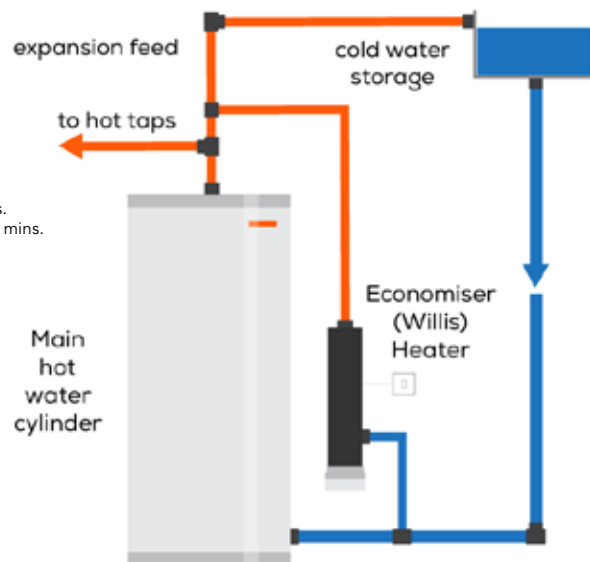
CODE	LENGTH	BOX QTY
920100 PK	2¼"	2000
710540	Immersion heater plug washer	2000

How The Economiser Heater Works

An Economiser Rapid Water Heater can heat approx. 4.5L of water every 5 mins.

- For a shower = pre-heat for 10/15 mins.
- For dishes, shaving etc = preheat for 5 mins.

Not Recommended for use in Hard Water Areas



Terms and Conditions of Sale

1. PRICES

All quotations are made and orders accepted without engagement. Every effort will be made to carry out any contract in accordance with the quoted prices. Orders are only accepted by the Seller for execution, however, at prices ruling at dates of despatch.

2. ORDERS

Orders accepted by the Seller cannot be cancelled without the Seller's consent in writing. Orders are accepted for delivery without responsibility for unforeseen hindrances, shortages of material, delays in transit, accidents, etc. Delivery dates are approximate and cannot be guaranteed, although they will be adhered to as far as possible. No responsibility can be accepted for delay in delivery.

3. ILLUSTRATIONS

The Seller cannot guarantee that the illustrations in the Seller's catalogues are in all cases identical with the goods the Seller supply, as improvements and modifications may be made from time to time.

4. WEIGHTS

Weights and measurements, when given, are generally correct, but must be taken as approximate only; they cannot be guaranteed.

5. WARRANTY

All goods are carefully tested, gauged, and inspected before despatch. Should any goods prove defective owing to faulty materials or workmanship, they will be replaced free provided such goods are returned to the Seller within three months from date of despatch. Beyond this, the Seller gives no guarantee, and accepts no responsibility for damage, direct or indirect or consequent from this or any cause. This warranty is given in place of any warranty or conditions (including any conditions as to quality or fitness for any particular purpose) implied by Common Law, Statute, or otherwise, which are hereby expressly excluded.

6. BREACH OF WARRANTY

The Seller accepts no responsibility for any breach of Clause 5 (Warranty) or in respect of any defect in the goods or damage caused by the use of the goods due to (i) ordinary wear and tear (ii) improper handling or storage or non-compliance with installation or handling regulations or excessive strain or use (iii) force majeure, special external circumstances not foreseen in respect of the goods or due to the use of the goods beyond normal use or (iv) use of

the goods for a purpose for which they are not intended including, for example (but without limitation), use and/or installation of the goods in any location (whether underground or otherwise) for which the goods are not suited.

7. NEW ACCOUNTS

Two approved trade references are requested.

8. SETTLEMENT TERMS

All accounts are strictly "Nett Monthly". Accounts are due and should be paid direct to the Seller. Receipts if requested will not be recognised except on the Sellers specially printed form. Clerical errors and omissions are subject to correction.

9. CONTRACTS

Delivery of contracts must be taken within the period specified, otherwise the Seller reserves the right to cancel or deliver the outstanding balances at the end of the period.

10. DELIVERY

Order value of £500 and above, carriage paid. Order value below £500, carriage charge applicable.

11. PACKING

Packing is non-returnable and free of charge.

12. NOTIFICATION OF DAMAGE, PARTIAL LOSS, SHORTAGES, ETC

Buyers must notify the Seller in writing in the event of damage, loss or shortage within seven days of delivery of goods. Every consignment ex Works contains a Contents Note and the reference number thereof, should be quoted. In the absence of such written advice from the Buyers to the Sellers, the goods will be deemed to have been delivered complete, and in a satisfactory condition, and the risk in the goods is then transferred to the Buyers.

13. SPECIALS

Specials are fittings made to customers orders, and differing from the specification given in the Sellers catalogue. Orders for such specials will be charged on the basis of the Sellers works costs, whether they are alterations to the Sellers existing patterns, or totally new designs, and under no circumstances can the Seller accept their return or cancellation. Any reasonable quantity made by the Seller in excess of an order to cover the possibility of 'Rejects' on the Sellers test, will, in the case of specials, be sent and invoiced to the customer.

14. PART DELIVERIES

Where goods contracted for are deliverable by instalments, each delivery shall be deemed to constitute a separate enforceable contract.

15. ACCEPTANCE OF ORDERS

Contracts and orders are only accepted upon and subject to Sellers' Standard Conditions of Sale, as printed herein. Unless expressly accepted in writing by the Seller, any qualification of these conditions in a Customers form or otherwise, will be of no effect whatsoever.

16. RETURNED FITTINGS

A 12.5% rehandling charge will be levied on any goods returned to the Seller that the Seller previously agreed to accept back, with the exception of those that are covered by Clause 5 (Warranty).

17. EXPORTS

Are subject to quotation and separate conditions of sale.

18. PRESSINGS, CASTINGS, TURNED PARTS AND JOBBING WORK

Made to customers specifications are subject to quotation. Separate conditions of sale apply.

19. RETENTION OF TITLE AND ALL MONIES CLAUSE

Instantor UK retains ownership of goods supplied until all debts owed to Instantor UK by the purchaser have been paid in full.

Notes

Lined area for notes on page 134.

Lined area for notes on page 135.

Notes





 **Instantor[®]**

instantor.co.uk

Instantor UK

1 Dagger Road,
Lisburn BT28 2TJ
United Kingdom

Hamstead Industrial Estate,
Austin Way, Birmingham B42 1DU
United Kingdom

Sales: +44 (0) 121 737 2515

Email: sales@instantor.co.uk

instantor.co.uk



Make the connection with us socially



10.25 UK - Unpriced