

## TOTAL SERVICE

Our commitment to our customers is unrivalled in 70 countries worldwide under our Total Service promise



## PRODUCT GUIDE

# CHEMICAL ANCHORING

**Professional Private Label**  
Chemical Anchor in Cartridges



**YOUR BRAND**  
**CHEMICAL ANCHOR**



Member of  
**Briolf Group**

[www.chemfix.co.uk](http://www.chemfix.co.uk)

# YOUR BRAND CHEMICAL ANCHOR



## Introduction

Chemfix Products Ltd is a private label manufacturer providing goods and services to our customers all over the world. Chemfix has specialised in manufacturing chemical anchoring solutions for over three decades, to become one of the largest OEM suppliers in the world.

At Chemfix, sustainability is more than just a goal—it's our responsibility. As a leader in chemical solutions, we are dedicated to minimizing our environmental impact while maximizing the value we deliver to our customers. Our commitment to sustainability drives every aspect of our operations, from sourcing eco-friendly materials to innovating greener product formulations.

Chemfix is a member of Briolf Group; an industrial group focused on the specialty chemicals sector, comprising of 8 companies, with a team of +1100 members and present in more than 120 countries.

## CONTENTS

**Introduction** 02  
TOTAL SERVICE • APPROVALS • CARTRIDGES

**Chemical Anchors** 04  
FULL RANGE OF ANCHORING SOLUTIONS

**Specialist Products** 05  
DESIGNED FOR EXTREME ENVIRONMENTS

**Ancillary Products** 06  
HOLE CLEANING • HOLLOW FIXINGS

**Supplementary Products** 07  
PULL TESTING • CALCULATION SOFTWARE

# TOTAL SERVICE

**Chemfix Products Ltd**, offers its comprehensive **Total Service** to support clients at every stage of their projects. Combining technical expertise, tailored solutions, and dedicated customer support, Chemfix ensures efficiency, compliance, and exceptional results.



## Freight Expertise

- Land Sea and Air
- Local regulations
- Movement and Origin documents
- Special packaging and labelling
- Customs clearance



## Regulatory Services

- MSDS created in your own brand
- Labelling compliance
- REACH compliance
- Packing compliance
- UFI Registration service



## Approval Cloning

- Approval cloning service
- Audit and compliance advice relating to market surveillance
- Dedicated one-to-one service.



## Reaction Time

- Dedicated team of service representatives for each customer
- Order processing within 24 hours
- Excellent client communication
- Solution oriented team approach



## Product and Packaging Development

- New product patents
- New formulation development
- Enviromentally friendly solutions
- Partnership developments



## Marketing Services

- Dedicated label design service
- Product and technical data created in your brand
- Market Intelligence and range advice
- Photography



## Technical Support

- Calculations and Technical advice
- On-site pull testing service
- Project tender support
- Client technical training and advice.



## After Sales Quality

- On-site pull tests
- Sales Team Support
- Back-up support for client issues
- Documentation updates

# TECHNICAL APPROVALS



Resin Name & Sizes	Chemfix 600/100	Chemfix 10	Chemfix CH200	Chemfix CH+ Max	EASF Vinyl Eco	Chemfix PESF	Chemfix Arctic
C2 Seismic	M12-M24 STUDS		M12,16,20 STUDS	M12 & M16 STUDS (+Tropical)			
C1 Seismic	M8-M30 STUDS		M8-M30 STUDS 8mm - 32mm REBAR				
Option 1 Cracked	M8-M30 STUDS 12mm - 32mm REBAR		M8-M30 STUDS 8mm - 32mm REBAR	M8-M24 STUDS (+Tropical)	M8-M24 STUDS		
Option 7 Non Cracked	M8-M30 STUDS 8mm - 32mm REBAR		M8-M30 STUDS 8mm - 32mm REBAR	M8-M24 STUDS 8mm - 25mm REBAR (+Tropical)	M8-M24 STUDS 8mm - 25mm REBAR	M8-M16 STUDS	M8-M24 STUDS 8mm - 25mm REBAR
Post Installed Rebar	8mm - 40mm REBAR	8mm - 20mm REBAR	8mm - 32mm REBAR	8-12 REBAR			
Diamond Drilled Holes	M8-M30 STUDS 8mm - 32mm REBAR						
Improved Splitting EAD 332402	8mm - 25mm REBAR						
Bricks and Masonry			M8-M16 CATEGORY b,c,d (w/d)	M6-M12 CATEGORY c (w/d)	M6-M12 CATEGORY c (w/d)	M6-M12 CATEGORY c (w/d)	
Aerated Concrete			M6-M12 AAC AUTO-CLAVED	M6-M12 AAC AUTOCLAVED			
Fire	YES	YES	YES	YES			
Dust Free Drilling	YES		YES	YES	YES		YES
WRAS (Water)	YES	YES	YES	YES	YES	YES	
VOC A+ LEED	YES	YES	YES	YES	YES	YES	YES

= ETA Includes 100 years anchor service life

# FOIL BAG CARTRIDGES



## Chubseal - No Cut System

## 165ml & 300ml Foil Bags

Characteristics:	
Resin Type:	For all 10:1 types
Tool Type:	65463
Recyclable:	Yes
Colour:	Natural or Black

ChubSeal® was invented in the UK by Chemfix and is covered by a worldwide patent. The traditional 165ml and 300ml foil bag systems have the disadvantage in that the user must cut the metal clip before extruding.



ChubSeal® solves this problem by cutting the bag in a safe and controlled environment during manufacture, and is replaced by the easy to use non-cut sealing cap.

Recycled plastic available

# Chubpack



## Chubpack

## 165ml & 300ml Foil Bags

Characteristics:	
Resin Type:	For all 10:1 types
Tool Type:	65463
Recyclable:	Yes
Colour:	Natural or Black

The Chubpack version, with metal clip is also available. Foil bag cartridges have many advantages including being leak-proof and odour free.



# STANDARD CARTRIDGES

## Co-Axial Cartridges 10:1

410ml

Recycled plastic available

Characteristics:	
Resin Type:	For all 10:1 types
Tool Type:	69840
Recyclable:	Yes
Colour:	Natural or Black

A very traditionally popular cartridge type at the professional user level due to its reliability, size and strength. The cartridge has a separate hard tube running centrally housing the hardener portion of the resin mix.



## Side-by-Side Cartridges 10:1

345ml - 825ml

Characteristics:	
Resin Type:	For all 10:1 types
Tool Type:	Various*
Recyclable:	Yes
Colour:	Natural

Also a popular cartridge type at the professional user level, this cartridge has a separate hard tube connected next to the main tube, housing the hardener portion of the resin mix. \*825ml 10:1 - pneumatic tool recommended



## Pure Epoxy Cartridges 1:1

400ml, 600ml & 1500ml

Characteristics:	
Resin Type:	For all 1:1 types
Tool Type:	Various*
Recyclable:	Yes
Colour:	Natural or Black

Three sizes are available, 400ml, 600ml, and 1500ml. These cartridges are exclusively for 1:1 epoxies and so are available in the largest sizes. \*A range of pneumatic tools is available from Chemfix.



## Pure Epoxy Cartridge 3:1

385ml & 585ml

Characteristics:	
Resin Type:	For all 3:1 types
Tool Type:	Various
Recyclable:	Yes
Colour:	Natural or Black

This cartridge with a side hardener tube is used only for the 3:1 formulation of Chemfix 600. \*A range of pneumatic tools is available from Chemfix.





HEAVY DUTY

Slow Curing Resin Anchors designed for critical applications in very high load situations

YOUR BRAND  
CHEMICAL ANCHOR

CHEMFIX 100/600

Manufactured from a Pure Epoxy, this product is available in cartridge sizes suitable for 1:1 and 3:1 resins

C2 Seismic approved  
high performance slow curing  
Pure Epoxy resin



100 years anchor  
SERVICE LIFE  
by european approval



This product is used with the Chemfix Epoxy mixer nozzle.

1:1 Side by Side Cartridge

Cartridge sizes 400ml, 600ml and 1500ml in black and natural.

3:1 Side by Side Cartridge

Now available in 385ml and 585ml in black and natural.

Typical applications and substrates

Uncracked Concrete

Cracked Concrete

Post-Installed Rebar

Dustless Drilling

Diamond Drilling

Seismic Zones

Deep Embedment

Fire Approval

Concrete EN 206:2013

Marble



Specifications CHEMFIX 100/600

An overview of the specific type approvals and product variant options



European & Other Technical Approvals

The European Technical Assessment (ETA) provides an independent Europe-wide procedure for assessing the essential performance characteristics of non-standard construction products.



Environment and Sustainability Awards

Product type approval is a process that verifies that a product meets a set of safety, technical, and regulatory requirements. It's also known as product certification or product conformity.

All of our products are  
Styrene Free

TECH DATA	VALUE
Type:	European Technical
Concrete Including Option 1 Cracked:	M8-M30 / 8-32mm
C2 Seismic:	M12-M24
Post Installed Rebar:	8-40mm (+ Fire)
Life of Anchor:	100 Years
Fire Approval:	Studs & Rebar
UKTA Approval:	Yes
Potable Water:	WRAS Approved
VOC Test:	A+ Rated
LEED Tested:	Yes
Temperature Range:	-40°C to +80°C
Dustless Drilling:	Yes
Bond Strength:	Heavy Duty
Versatility:	Medium
Chemical Resistance:	Very High
Installation Environment:	Dry / Damp / Flooded
Gel Time:	28 mins @ 15°C
Installation Temperature Range:	5°C to +40°C
Resin Colours:	Red
Shelf Life:	24 Months
Mixer:	Chemfix Epoxy
Cartridges:	385/585ml 3:1
	400/600/1500ml 1:1

Palletisation

	Box	Euro Pallet	Standard Pallet	Pack
400ml 1:1 1L	12	960	1200	M
585ml 3:1 1L	12	720	960	M
600ml 1:1 1L	10	800	1000	M
Allowable Storage Conditions : 5°C to 35°C				

A full version of the technical data sheet is available on request

CHEMFIX 10

Manufactured from a Pure Epoxy, this product is available in cartridge sizes suitable for 1:1

Economy version  
high performance  
Pure Epoxy resin

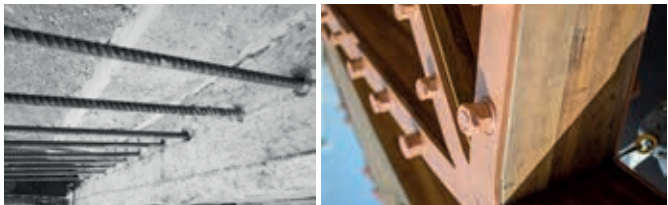
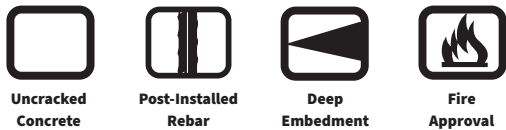


This product is used with the patented T-Flow™ mixer nozzle.

**1:1 Side by Side Cartridge**

Cartridge sizes 400ml, 600ml or 1500ml in a side by side cartridge.

Typical applications and substrates



Specifications CHEMFIX 10

An overview of the specific type approvals and product variant options



European & Other Technical Approvals

The European Technical Assessment (ETA) provides an independent Europe-wide procedure for assessing the essential performance characteristics of non-standard construction products.



Environment and Sustainability Awards

Product type approval is a process that verifies that a product meets a set of safety, technical, and regulatory requirements. It's also known as product certification or product conformity.

TECH DATA	VALUE
Type:	European Technical
Concrete Including Option 1 Cracked:	-
Masonry:	-
Post Installed Rebar:	8-20mm (+ Fire)
Life of Anchor:	50 Years
Fire Approval:	Yes
UKTA Approval:	Yes
Potable Water:	WRAS Approved
VOC Test:	A+ Rated
LEED Tested:	Yes
Temperature Range:	-40°C to +40°C
Dustless Drilling:	no
Bond Strength:	Heavy Duty
Versatility:	Medium
Chemical Resistance:	Very High
Installation Environment:	Dry / Damp / Flooded
Gel Time:	28 mins @ 15°C
Installation Temperature Range:	5°C to +40°C
Resin Colours:	Red / Grey
Shelf Life:	24 Months
Mixer:	T-Flow™
Cartridges:	400/600/1500ml 1:1

Palletisation

	Box	Euro Pallet	Standard Pallet	Pack
400ml 1:1 1L	12	960	1200	M
600ml 1:1 1L	10	800	1000	M

Shelf Life



Allowable Storage Conditions : 5°C to 35°C

A full version of the technical data sheet is available on request

All of our products are  
Styrene Free



# MEDIUM TO HEAVY DUTY

Fast Curing Resin Anchors designed for almost any application with high approval coverage

# YOUR BRAND CHEMICAL ANCHOR

## CHEMFIX CH 200

Manufactured from a hybrid resin base, this product is available in all cartridge sizes for 10:1 resins

**C2 Seismic approved**  
**high performance fast curing**  
**styrene free anchor**



Available with  
Mixers attached



This product is used with the patented T-Flow™ mixer nozzle.

## Specifications CHEMFIX CH 200

An overview of the specific type approvals and product variant options



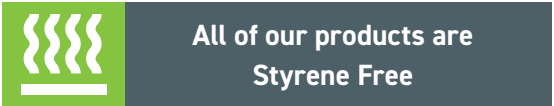
### European & Other Technical Approvals

The European Technical Assessment (ETA) provides an independent Europe-wide procedure for assessing the essential performance characteristics of non-standard construction products.



### Environment and Sustainability Awards

Product type approval is a process that verifies that a product meets a set of safety, technical, and regulatory requirements. It's also known as product certification or product conformity.



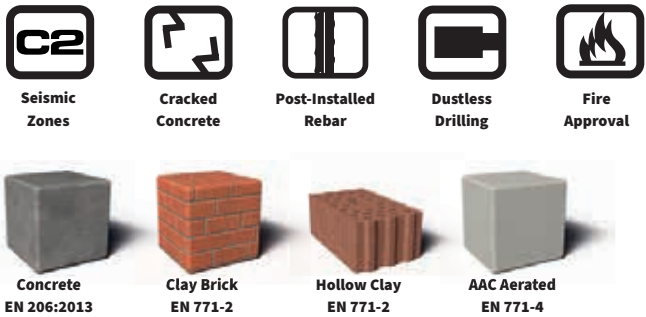
TECH DATA	VALUE
Type:	European Technical
Concrete Including Option 1 Cracked:	M8-M30 / 8-32mm
Masonry:	M8-M16
Post Installed Rebar:	8-32mm (+ Fire)
Life of Anchor:	50 Years
Fire Approval:	Yes
UKTA Approval:	Yes
Potable Water:	WRAS Approved
VOC Test:	A+ Rated
LEED Tested:	Yes
Temperature Range:	-40°C to +120°C
Dustless Drilling:	Yes
Bond Strength:	Medium to Heavy Duty
Versatility:	Very High
Chemical Resistance:	High
Installation Environment:	Dry / Damp / Flooded
Gel Time:	9 mins @ 15°C
Installation Temperature Range:	-10°C to +40°C
Resin Colours:	Grey / Beige
Colour Change Availability:	no
Shelf Life:	18 Months
Mixer:	T-Flow™
Cartridges:	300ml Foil Bag 410ml co-Axial

### Palletisation

	Box	Euro Pallet	Standard Pallet	Pack
410ml 1L	12	1152	1200	M
410ml 1L/1A	12	1008	1344	A
300ml 1L/1A	12	1152	1368	A
300ml 2A	12	1224	1296	A
300ml 1L	12	1152	1488	M

Allowable Storage Conditions : 0°C to 30°C  
A full version of the technical data sheet is available on request

### Typical applications and substrates



# MEDIUM TO HEAVY DUTY

Fast Curing Resin Anchors designed for almost any application with high approval coverage

# YOUR BRAND CHEMICAL ANCHOR

## CHEMFIX CH+ MAX

Manufactured from a vinylester resin base, this product is available in all cartridge sizes for 10:1 resins

**Option 1 cracked concrete**  
high performance fast curing  
styrene free anchor



Available with  
Mixers attached

**COLOUR CHANGE  
TECHNOLOGY AVAILABLE**

**100** years anchor  
SERVICE LIFE  
by european approval



This product is used with the patented T-Flow™ mixer nozzle.



## Specifications CHEMFIX CH+ MAX

An overview of the specific type approvals and product variant options



### European & Other Technical Approvals

The European Technical Assessment (ETA) provides an independent Europe-wide procedure for assessing the essential performance characteristics of non-standard construction products.



### Environment and Sustainability Awards

Product type approval is a process that verifies that a product meets a set of safety, technical, and regulatory requirements. It's also known as product certification or product conformity.

A full version of the technical data sheet is available on request

**All of our products are  
Styrene Free**

TECH DATA	VALUE
Type:	European Technical
Seismic C2	M12 & M16
Concrete Including Option 1 Cracked:	M8-M24 / 8-32mm
Masonry:	M6-M12
Post Installed Rebar:	8-12mm (+ Fire)
Life of Anchor:	100 Years
Fire Approval:	Yes
UKTA Approval:	Yes
Potable Water:	WRAS Approved
VOC Test:	A+ Rated
LEED Tested:	Yes
Temperature Range:	-40°C to +40°C
Dustless Drilling:	Yes
Bond Strength:	Medium to Heavy Duty
Versatility:	Very High
Chemical Resistance:	High
Installation Environment:	Dry / Damp / Flooded
Gel Time:	9 mins @ 15°C
Installation Temperature Range:	-10°C to +40°C
Resin Colours:	Grey / Beige
Colour Change Availability:	Yes
Shelf Life:	18 Months
Mixer:	T-Flow™
Cartridges:	165/300ml Foil Bag
	410ml co-Axial
	345/825 Side-by-Side

### Palletisation



### Shelf Life



	Box	Euro Pallet	Standard Pallet	Pack
410ml 1L	12	1152	1200	M
410ml 1L/1A	12	1008	1344	A
300ml 1L/1A	12	1152	1368	A
300ml 2A	12	1224	1296	A
300ml 1L	12	1152	1488	M

Allowable Storage Conditions : 0°C to 30°C

### Typical applications and substrates





# MEDIUM TO HEAVY DUTY

Fast Curing Resin Anchors designed for almost any application with high approval coverage

# YOUR BRAND CHEMICAL ANCHOR

## CHEMFIX EASF

Manufactured from a hybrid resin base, this product is available in all cartridge sizes for 10:1 resins

**Option 7 uncracked concrete high performance fast curing styrene free anchor**



Available with Mixers attached



COLOUR CHANGE TECHNOLOGY AVAILABLE

This product is used with the patented T-Flow™ mixer nozzle.

## Specifications CHEMFIX EASF

An overview of the specific type approvals and product variant options



### European & Other Technical Approvals

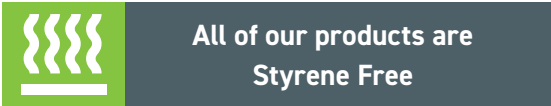
The European Technical Assessment (ETA) provides an independent Europe-wide procedure for assessing the essential performance characteristics of non-standard construction products.



### Environment and Sustainability Awards

Product type approval is a process that verifies that a product meets a set of safety, technical, and regulatory requirements. It's also known as product certification or product conformity.

A full version of the technical data sheet is available on request



TECH DATA	VALUE
Type:	European Technical
Concrete Including Option 1 Cracked:	M8-M24
Concrete Including Option7 uncracked:	M8-M24 / 8-25mm
Masonry:	M6-M12
Post Installed Rebar:	no
Life of Anchor:	50 Years
Fire Approval:	no
UKTA Approval:	Yes
Potable Water:	WRAS Approved
VOC Test:	A+ Rated
LEED Tested:	Yes
Temperature Range:	-40°C to +40°C
Dustless Drilling:	no
Bond Strength:	Medium to Heavy Duty
Versatility:	High
Chemical Resistance:	High
Installation Environment:	Dry / Damp / Flooded
Gel Time:	9 mins @ 15°C
Installation Temperature Range:	-10°C to +40°C
Resin Colours:	Grey / Beige
Colour Change Availability:	Yes
Shelf Life:	18 Months
Mixer:	T-Flow™
Cartridges:	165/300ml Foil Bag
	410ml co-Axial
	345/825 Side-by-Side

### Palletisation



### Shelf Life



	Box	Euro Pallet	Standard Pallet	Pack
410ml 1L	12	1152	1200	M
410ml 1L/1A	12	1008	1344	A
300ml 1L/1A	12	1152	1368	A
300ml 2A	12	1224	1296	A
300ml 1L	12	1152	1488	M

Allowable Storage Conditions : 0°C to 30°C

## Typical applications and substrates



	<b>Chubseal® Foil Bag Patent</b> Cartridge sizes 165ml and 300ml in either Non-Cut Chubseal® or Chubpack
	<b>Coaxial Style Chemfix</b> Now available in 400, 410 and 420ml sizes in our patent moulding.
	<b>Side by Side Variant</b> Various sizes including 345ml and 825ml with twin chambers.

# LOW TO MEDIUM DUTY

Fast Curing Resin Anchors designed for low duty applications

# YOUR BRAND CHEMICAL ANCHOR

## CHEMFIX PESF TOP

Manufactured from a polyester resin base, this product is available in all cartridge sizes for 10:1 resins

**Option 7 uncracked concrete high performance fast curing styrene free anchor**



Available with Mixers attached

**COLOUR CHANGE TECHNOLOGY AVAILABLE**

This product is used with the patented T-Flow™ mixer nozzle.



## Specifications CHEMFIX PESF TOP

An overview of the specific type approvals and product variant options



### European & Other Technical Approvals

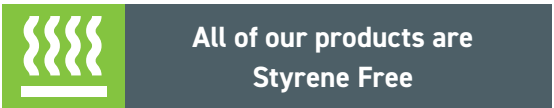
The European Technical Assessment (ETA) provides an independent Europe-wide procedure for assessing the essential performance characteristics of non-standard construction products.



### Environment and Sustainability Awards

Product type approval is a process that verifies that a product meets a set of safety, technical, and regulatory requirements. It's also known as product certification or product conformity.

A full version of the technical data sheet is available on request



TECH DATA	VALUE
Type:	European Technical
Concrete Including Option7 uncracked:	M8-M16
Masonry:	M6-M12
Post Installed Rebar:	no
Life of Anchor:	50 Years
Fire Approval:	no
UKTA Approval:	Yes
Potable Water:	WRAS Approved
VOC Test:	A+ Rated
LEED Tested:	Yes
Temperature Range:	-40°C to +80°C
Dustless Drilling:	no
Bond Strength:	Low Duty
Versatility:	High
Chemical Resistance:	Medium
Installation Environment:	Dry / Damp / Flooded
Gel Time:	9 mins @ 15°C
Installation Temperature Range:	-10°C to +40°C
Resin Colours:	Grey / Beige
Colour Change Availability:	Yes
Colour Change Options:	Blue to Grey
Shelf Life:	18 Months
Mixer:	T-Flow™
Cartridges:	165/300ml Foil Bag
	410ml co-Axial
	345/825 Side-by-Side

### Palletisation



### Shelf Life



	Box	Euro Pallet	Standard Pallet	Pack
410ml 1L	12	1152	1200	M
410ml 1L/1A	12	1008	1344	A
300ml 1L/1A	12	1152	1368	A
300ml 2A	12	1224	1296	A
300ml 1L	12	1152	1488	M

Allowable Storage Conditions : 0°C to 30°C

## Typical applications and substrates



Uncracked Concrete



Masonry Brick



Concrete EN 206:2013



Clay Brick EN 771-2



Hollow Clay EN 771-2





# CHEMFIX ARCTIC

Manufactured from a hybrid resin base, this product is available in all cartridge sizes for 10:1 resins

Option 7 uncracked concrete  
high performance fast curing  
styrene free anchor

-20°C



Available with  
Mixers attached

This product is used with the patented T-Flow™ mixer nozzle.



## Specifications CHEMFIX ARCTIC

An overview of the specific type approvals and product variant options



### European & Other Technical Approvals

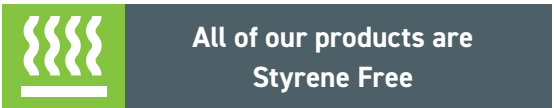
The European Technical Assessment (ETA) provides an independent Europe-wide procedure for assessing the essential performance characteristics of non-standard construction products.



### Environment and Sustainability Awards

Product type approval is a process that verifies that a product meets a set of safety, technical, and regulatory requirements. It's also known as product certification or product conformity.

A full version of the technical data sheet is available on request



TECH DATA	VALUE
Type:	European Technical
Concrete Including Option 7 uncracked:	M8-M24 / 8-32mm
Masonry:	no
Post Installed Rebar:	no
Life of Anchor:	50 Years
Fire Approval:	no
UKTA Approval:	Yes
Potable Water:	WRAS Approved
VOC Test:	A+ Rated
LEED Tested:	Yes
Temperature Range:	-40°C to +40°C
Dustless Drilling:	no
Bond Strength:	Medium to Heavy Duty
Versatility:	Low
Chemical Resistance:	High
Installation Environment:	Dry
Gel Time:	48 mins @ -10°C
Installation Temperature Range:	-20°C to +5°C
Resin Colours:	Grey
Colour Change Availability:	no
Shelf Life:	18 Months
Mixer:	T-Flow™
Cartridges:	165/300ml Foil Bag
	410ml co-Axial
	345/825 Side-by-Side

### Palletisation



### Shelf Life



	Box	Euro Pallet	Standard Pallet	Pack
410ml 1L	12	1152	1200	M
410ml 1L/1A	12	1008	1344	A
300ml 1L/1A	12	1152	1368	A
300ml 2A	12	1224	1296	A
300ml 1L	12	1152	1488	M

Allowable Storage Conditions : -20°C to 35°C

## Typical applications and substrates





CHEMFIX TROPICAL

Manufactured from a hybrid resin base, this product is available in all cartridge sizes for 10:1 resins

Option 1 cracked concrete  
high performance slow curing  
styrene free anchor

+45°C



Available with Mixers attached

100 years anchor  
SERVICE LIFE  
by european approval

This product is used with the patented T-Flow™ mixer nozzle.



Also ideal for installing large  
and deep holes at normal  
temperatures.

**Chubseal® Foil Bag Patent**

Cartridge sizes 165ml and 300ml in either Non-Cut Chubseal® or Chubpack

**Coaxial Style Chemfix**

Now available in 400, 410 and 420ml sizes in our patent moulding.

**Side by Side Variant**

Various sizes including 345ml and 825ml with twin chambers.

Typical applications and substrates

Uncracked Concrete

Cracked Concrete

Post-Installed Rebar

+45°C Installation

Concrete  
EN 206:2013

Clay Brick  
EN 771-2

Hollow Clay  
EN 771-2

AAC Aerated  
EN 771-4



Specifications CHEMFIX TROPICAL

An overview of the specific type approvals and product variant options



European & Other Technical Approvals

The European Technical Assessment (ETA) provides an independent Europe-wide procedure for assessing the essential performance characteristics of non-standard construction products.



Environment and Sustainability Awards

Product type approval is a process that verifies that a product meets a set of safety, technical, and regulatory requirements. It's also known as product certification or product conformity.

A full version of the technical data sheet is available on request

All of our products are  
Styrene Free

TECH DATA	VALUE
Type:	European Technical
Concrete Including Option 1 Cracked:	M8-M24 / 8-32mm
Masonry:	M6-M12
Post Installed Rebar:	8-12mm (+ Fire)
Life of Anchor:	100 Years
Fire Approval:	Yes
UKTA Approval:	Yes
Potable Water:	WRAS Approved
VOC Test:	A+ Rated
LEED Tested:	Yes
Temperature Range:	-40°C to +40°C
Dustless Drilling:	Yes
Bond Strength:	Medium to Heavy Duty
Versatility:	Very High
Chemical Resistance:	High
Installation Environment:	Dry / Damp / Flooded
Gel Time:	9 mins @ 15°C
Installation Temperature Range:	-10°C to +40°C
Resin Colours:	Grey / Beige
Colour Change Availability:	Yes
Shelf Life:	18 Months
Mixer:	T-Flow™
Cartridges:	165/300ml Foil Bag
	410ml co-Axial
	345/825 Side-by-Side

Palletisation



Shelf Life



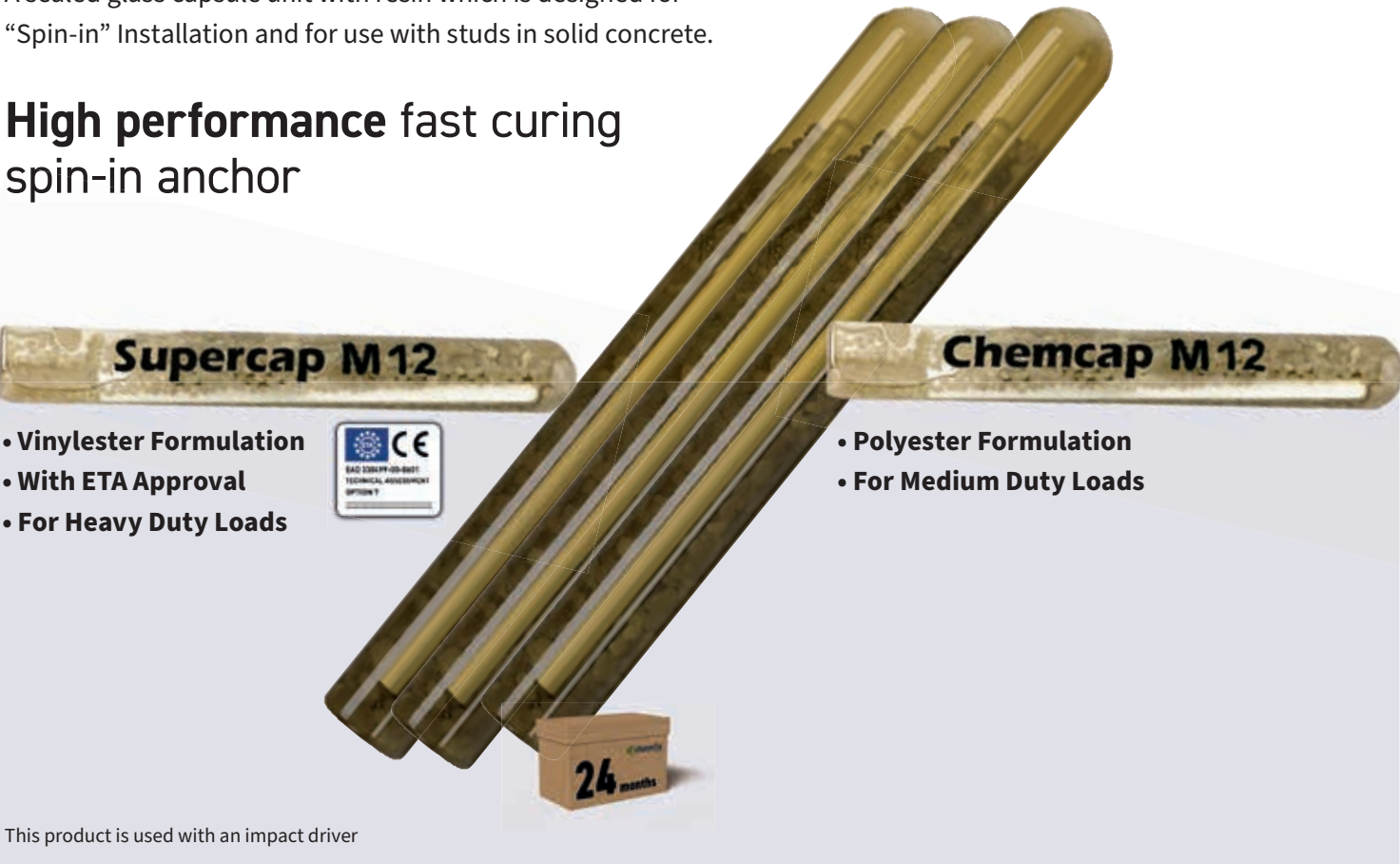
	Box	Euro Pallet	Standard Pallet	Pack
410ml 1L	12	1152	1200	M
410ml 1L/1A	12	1008	1344	A
300ml 1L/1A	12	1152	1368	A
300ml 2A	12	1224	1296	A
300ml 1L	12	1152	1488	M

Allowable Storage Conditions : 0°C to 30°C

# GLASS CAPSULES

A sealed glass capsule unit with resin which is designed for “Spin-in” Installation and for use with studs in solid concrete.

## High performance fast curing spin-in anchor



## Specifications GLASS CAPSULES

An overview of the specific type approvals and product variant options



### European & Other Technical Approvals

The European Technical Assessment (ETA) provides an independent Europe-wide procedure for assessing the essential performance characteristics of non-standard construction products.



TECH DATA (SuperCap™ only)	VALUE
Type:	European Technical
Concrete:	M8-M30
Masonry:	No
Post Installed Rebar:	No
Life of Anchor:	50 Years
Fire Approval:	No
UKTA Approval:	No
Potable Water:	No
VOC Test:	No
LEED Tested:	No
Temperature Range:	-40°C to +40°C
Dustless Drilling:	No
Tropical Version:	No
Bond Strength:	Medium to Heavy Duty
Versatility:	Low
Chemical Resistance:	High
Installation Environment:	Dry / Damp / Flooded
Gel Time:	9 mins @ 15°C
Installation Temperature Range:	-10°C to +40°C
Shelf Life:	24 Months



### SuperCap™ Spin-In Capsule

Supplied in sizes between M8 and M30, either 10pcs or 6pcs per pack.



### ChemCap™ Spin-In Capsule

Supplied in sizes between M8 and M24, either 10pcs or 6pcs per pack.

## Typical applications and substrates



Uncracked Concrete



Concrete EN 206:2013



Concrete EN 206:2013



For use with Hex Head Chisel ended threaded studs, for "Spin-In" Installations.





## EXTRUSION TOOLS

### Manual Extrusion Tools

Description	Code	Box Qty
165/300ml Silicone	65463	12
380/420ml 10:1	65464	10
345ml 10:1	65472	10
385ml 10:1	60643	10
385/585ml 3:1	60644	10
400ml 1:1	69841	10
400/600ml 1:1	60134	10
Characteristics		
For use with:	Chemfix resins	
Rubber Grip:	65464/69841/60134	
Colors:	Red	

### Description:

Chemfix Extrusion Tools are specifically designed & developed to work with the Chemfix resin range, and so feature in Chemfix European Approvals.

They are specifically geared to give the correct extrusion force for the perfect user experience, but more importantly to avoid damaging the cartridge.

## POINT OF SALE / KIT CASES

### Brick Demo Sample

Description	Code	Box Qty
Brick Demo Sample	65599	4
Characteristics		
Weight:	1.2kg each	
Size:	120 x 60 x 140mm	
Box Size:	260 x 260 x 80mm	
Outer weight:	5.6kgs	

### Description:

This real-life lightweight demonstration sample is perfect as a sales tool to illustrate the power and of chemical anchoring in a way that you can see and feel.

These are also extremely useful as a display item at exhibitions and point of sales.

### Drill Adaptors

Description	Code	Box Qty
165/300ml silicone	68894	15
380/420ml 10:1	68895	15
400/600ml sausage	68899	15
Characteristics		
For use with:	Chemfix resins	
Recommended Nm:	12	
Drill Type:	12v	
Lightweight:	0.8kg	

### Description:

The Drill Adaptor Extrusion Tool is a patented innovation which allows any battery operated power drill to be converted to a powerful extrusion tool for Silicone or Chemical anchoring cartridges without the need for a separate dedicated battery tool.

Your standard work drill can be converted to a fast extrusion tool and back in a matter of seconds so you don't have to worry about storing and charging separate battery packs.

### Counter Top Display

Description	Code	Box Qty
6 Cartridge Display	65373	1
Characteristics		
Weight:	4.2kg	
Material:	Hollow Wall / Block	
Suitable for:	Counter Top Display	
Size:	470 x 105 x 32mm	

### Description:

Chemfix range of point of sale (POS) material and sales aids for use in store or for client visits, in plain or private label. An ideal way to make your product stand out from the shelf, and illustrate the power and uses of chemical anchoring.

### Pneumatic Tools

Description	Code	Box Qty
380/420ml 10:1	65461	1
400ml 1:1	65466	1
600ml 1:1	65479	1
825ml 10:1	65462	1
385/585ml 3:1	65481	1
1400ml 3:1	76405	1
1500ml 1:1	78778	1
Characteristics		
For use with:	Chemfix resins	

### Description:

Driven by a standard Pneumatic air line for effortless extrusions.

- Unlimited & smooth extrusions.
- 2.2kN of extrusion force at 6.8 bar pressure\*.
- Pressure control, 1000psi regulator.
- 12 Month manufacturer warranty

### Site Kit Case

Description	Code	Box Qty
Case with filled 300ml	Enquire	5
Case with filled 380-420ml	Enquire	5
Case Empty	41877	5
Full w/o cartridges 300ml	41882	5
Full w/o cartridges 380-420ml	75416	5

### Description:

The Chemfix site kit case has been specifically designed to suit Chemfix cartridges and accessories. The kit contains everything required to complete a safe and efficient chemical anchor fixing.

Ideal for on site to keep your cartridges and ancillaries safe and in one place.



## MIXER NOZZLES



Decades of research and experience in the field of chemical anchoring have culminated in Chemfix designing and manufacturing its very own patented mixer nozzle. The T-Flow mixer nozzle brings numerous benefits, principally to the chemical anchor user, but also in a wider sense. The T-Flow is the smallest mixer in its class and requires less material to manufacture it and creates less waste both of resin product and material. It achieves this using the patented diffuser, which allows a superior mix in a smaller nozzle.



T-Flow Mixer

Description	Code	Box Qty
T-Flow Standard	22481	600
T-Flow + Hanger	22482	500
T-Flow Short	65553	750
T-Flow Short + Hanger	21752	700
Characteristics		
For use with:	All 10:1 resins / Chemfix 10	
Thread Type:	All cartridges	
Hanger option:	165/300/420ml	
Colors:	Translucent	
Included in ETA:	YES	

Extension Nozzles

Description	Code	Box Qty
Extension 250mm	65573	1500
Extension 1000mm	65579	450
Characteristics		
For use with	All resins types	
Connection Type	All nozzles	
Colors:	Translucent	
Thread Type:	Push Fit	
Included in ETA:	YES	

Epoxy Mixer

Description	Code	Box Qty
Epoxy Mixer Standard	65559	400
Characteristics		
For use with:	Epoxy resins types	
Thread Type:	All cartridges	
Hanger option:	No	
Colors:	Translucent	
Included in ETA:	YES	

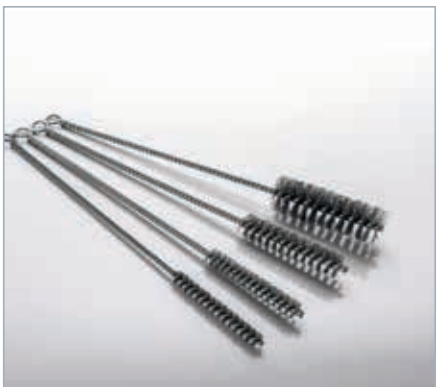
## HOLE PREPARATION



Correct drill hole preparation is extremely important in maintaining the published performance values in European Approvals and technical data for the vast majority of situations. Cleaning and preparation procedures are also clearly documented within the installation procedures section of any given European Approval.

Chemfix stock and supply the entire range of ancillary items to carry out hole cleaning, namely the removal of dust and debris which remains in the hole following normal hammer drilling, and also the roughening of diamond drilled holes, when circumstances dictate this.

More information is available from the Chemfix Technical Department,



Hole Roughening Tool

Description	Code	Box Qty
M16 (18mm hole)	78437	1
M20 (22-25mm hole)	78438	1
M24 (26-28mm hole)	78439	1
M27-30 (32-35mm)	78440	1
Characteristics		
For use with:	SDS Max Drilling	
Thread Type:	SDS	
Application:	Roughening of diamond drilled holes	
Colors:	Gun Metal Grey	
Included in ETA:	NO	

Air Blow Pump

Description	Code	Box Qty
Length 190mm	65561	24
Length 280mm	65562	24
Length 400mm	84106	24
Characteristics		
For use with:	Diameters do ≤ 20mm embedment depths up to hef ≤ 10d	
Type:	Hand Operated	
Colors:	Grey	
Thread Type:	Push Fit	
Included in ETA:	YES	

Steel Brushes

Description	Code	Box Qty
10mm Diameter	65578	50/600
13mm Diameter	65575	40/480
18mm Diameter	65576	50/300
22mm Diameter	66559	50/300
28mm Diameter	65577	40/240
Characteristics		
For use with:	Diameters do ≤ 20mm embedment depths up to hef ≤ 10d	
Length:	300mm	
Type:	Hand Operated	
Included in ETA:	YES	

## SOCKETS AND SLEEVES

### Chembolt Asphalt Fixing



Description	Code	Box Qty
M10 x 70mm	65368	50
M10 x 100mm	65369	50
M12 x 70mm	65370	50
M12 x 100mm	65371	50
Characteristics		
For use with:	All Chemfix resins	
Thread Type:	ISO	
Application:	Removable Internal Thread	
Colors:	Zinc Passivated	
Loads:	1 - 1.8kN minimum	

### Application:



### Internal Threaded Socket



Description	Code	Box Qty
M6 (12/50 sleeves)	65501	50/1000
M8 (16/85 sleeves)	65502	50/600
M10 (16/85 sleeves)	65503	50/400
M12 (20/85)	65504	50/400
Characteristics		
For use with:	All Chemfix resins	
Thread Type:	ISO	
Application:	Removable Internal Thread	
Colors:	Zinc Passivated	

### Application:



### Nylon Perforated Sleeves (Translucent)



Description	Code	Box Qty
12/50 mm	65564	5000
12/80 mm	65580	3500
16/85 mm	65565	2000
16/130 mm	65566	1000
16/330 mm	600431	600
20/85 mm	65567	1000
20/130 mm	68304	1000
20/200 mm	69567	400

### Application:



## BAGGED ANCILLARIES

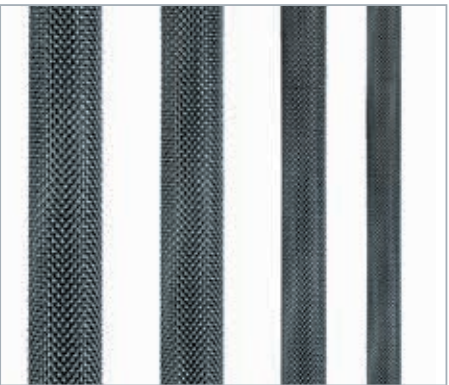
Description	Code	No. Per Bag	Box Qty
SLEEVE 12 X 50	79561	10 pcs	500
SLEEVE 12 X 50	79563	25 pcs	200
SLEEVE 12 X 80	79562	10 pcs	250
SLEEVE 12 X 80	79566	25 pcs	100
SLEEVE 16 X 85	79564	10 pcs	200
SLEEVE 16 X 85	79565	25 pcs	80
SLEEVE 16 X 130	79567	10 pcs	120
SLEEVE 16 X 130	79806	25 pcs	48
SLEEVE 20 X 85	79807	10 pcs	120
SLEEVE 20 X 85	79808	25 pcs	48
SLEEVE 20 X 130	79809	10 pcs	90
SLEEVE 20 X 130	79810	25 pcs	37
250MM EXT TUBES	79811	10 pcs	150
T-FLOW MIXER	79812	10 pcs	100
T-FLOW MIXER SHORT	79813	10 pcs	120
SPREADER (WHITE)	79814	10 pcs	10

### Description:

As shown in the illustrations, the bags can be printed with a specific design, barcode and private label branding to your instructions.



### Metal Perforated Sleeves



Description	Code	Box Qty
12mm x 1000mm	65568	50
16mm x 1000mm	65569	50
22mm x 1000mm	65570	25
26mm x 1000mm	65571	25
Characteristics		
For use with:	Chemfix 10:1 resins	
Application:	Hollow Wall Fixings	
Colors:	Grey	
Loads:	Various	

### Description:

Galvanized Metal sleeves are a highly effective way to make a fixing of a specific length, in a substrate with a hollow void.

The sleeves can be cut and sealed to suit the length and come in 4 diameters.





## PORTABLE ANCHOR TESTING



### 60kN Heavy Duty Tension Kit

Description	Code	Box Qty
60kN In Plastic Case	79862	1
60kN In Carry Bag	79863	1
Characteristics		
Free Mobile App	Works with Bluetooth	
No Subscription Charge	USB Rechargeable	
Sealed Thrust Nut	Maintenance Free	
24mm Ratchet	Fast and Easy	

### 25kN Digital Pull Tester

Description	Code	Box Qty
25kN In Plastic Case	79864	1
25kN In Carry Bag	79865	1
Characteristics		
Free Mobile App	Works with Bluetooth	
No Subscription Charge	USB Rechargeable	
Sealed Thrust Nut	Maintenance Free	
24mm Ratchet	Fast and Easy	



### Description:

60kN & 25kN Digital Load Cell  
App (Android & iOS)  
Bridge  
Drop Rod & Nut  
Tool Adaptor Jaw  
Clevis  
Tester Lanyard  
Charging Cable  
12 month Calibration Certificate  
Anti-Rotation Pull Out Nut & Handle  
Slotted Washer Pack M6, 8, 10, 12 & 16

60kN  
3/8" Socket Wrench & Tool Lanyard  
17mm Socket  
Threaded Washer Pack M6, 8, 10, 12, 16 & 20  
24mm Spanner

25kN  
Threaded Washer Pack M6, 8, 10, 12 & 16  
24mm Reversible Ring Ratchet Spanner with  
comfort handle & Tool Lanyard



### 145kN, 50kN and 25kN Tension Kit

Description	Code	Box Qty
Deluxe Master Kit 25kN	76277	1
Deluxe Master Kit 50kN	76479	1
Heavy Duty Kit 145kN	76282	1

### Rebar Adaptors (For 145kN kit)

Description	Code	Box Qty
8mm	76298	1
10mm	76295	1
12mm	76292	1
14mm	76320	1
16mm	76293	1
18mm	76942	1
20mm	76294	1
22mm	76321	1

### Description:

Professional Medium Duty Fixing Testers enable engineers to confirm the holding power of anchors in most construction materials, either for the purpose of establishing safe working loads or to validate the correct installation of existing fixings. The tensile load of up to 25kN or 50kN.

The 145kN model 2008 tester has been designed to meet the demand for proof load testing of larger construction fixings. A lightweight triangular shape aluminium load spreading bridge has been designed specifically for the model 2008 tester and directs reaction loads away from the fixing, this combined with the tester weighs only 14kg.

## CALCULATION SOFTWARE



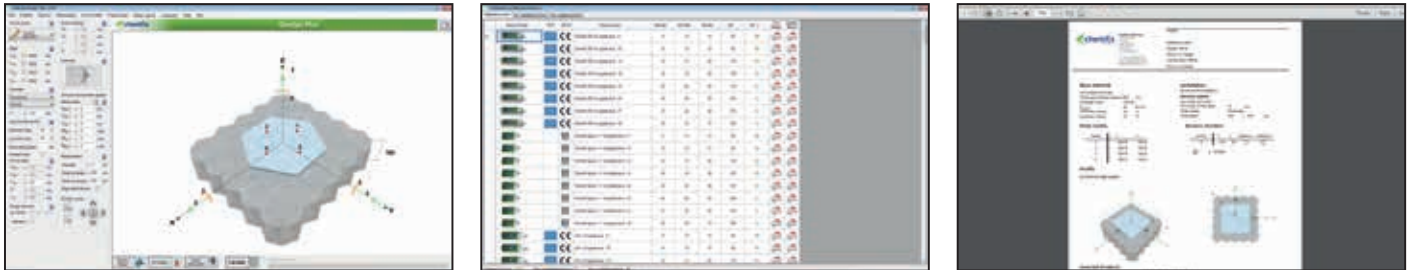
### Description:

Chemfix Design Plus® is calculation software designed to help even inexperienced users to find the proper anchor for connections into concrete. Design Plus is available to our customers in full private label branding.

Being developed by experts in the fixing industry from all Europe and having as a base of calculation, the Europe design standards (ETAG), Design Plus is the friendliest software from this category.

For structural engineers this is a really helpful tool, saving them from the long hand calculations and offering more anchoring solutions for various substrates.

### INCLUDES SEISMIC CALCULATIONS, POST INSTALLED REBAR & MASONRY





WE ALSO MANUFACTURE

Epoxy Adhesives



General Repair Filler



Epoxy Repair System



Epoxy Adhesives

Description	Code	Box Qty
Metofix 3:1 15kg	65377	1
Metobond 1:1 10kg	65379	1
Metofix CB - A2 15kg	60293	1
Metofix CB - A2 5kg	60424	1
Metofix 3:1 15kg GRP	65380	1
Characteristics		
For use with:	Brick Slips, Cut+Bond Brick Lintels+Arches	
Approval	BBA / EN13501 FIRE	

Repair Fillers

Description	Code	Box Qty
1 Part Colours 250ml	Various	6
2 Part Colours 275/770ml/3.3L	Various	6
Pre-Mix 300g	Various	12
2 Part Decor	Various	6
Metoset Repair 1kg / 5kg	Various	6 / 2
Metoset 260g / 480g	Various	12
Characteristics		
For use with:	Minor Repairs in Trade and DIY	

Professional Epoxy Repair

Description	Code	Box Qty
Timbabuild EHB60	65863	10
Timbabuild ERC10	65864	10
Starter Kit	67951	1
Timbabuild EWS Primer	69909	4
Timbaglaze 290ml	66215	12
Characteristics		
For use with:	Professional Large Scale Repairs to Wooden Structures	

VERSION 10.03

#### Head Office

Chemfix Products Ltd  
Mill Street East, Dewsbury  
West Yorkshire, WF12 9BQ  
United Kingdom

Telephone: +44 (0) 1924 453886  
Website: [www.chemfix.co.uk](http://www.chemfix.co.uk)  
E-mail: [info@chemfix.co.uk](mailto:info@chemfix.co.uk)



Member of  
**Briolf Group**