

waterPIPE

PPR SYSTEM



UNI EN ISO 9001:2015
UNI EN ISO 14001:2015

Rev_01-2019



PLASTICA ALFA
INNOVATION & WATER TECHNOLOGIES

I tubi e i raccordi in PPR del sistema WATERPIPE, prodotti da Plastica Alfa, si distinguono per l'affidabilità e la completezza della gamma.

I tubi multistrato FASER, grazie alla maggiore stabilità dimensionale, sono maggiormente indicati per impianti di riscaldamento e raffreddamento idronico, impianti ad aria compressa e varie applicazioni industriali.

Una gamma completa di **tubi, raccordi, valvole** e accessori permette di eseguire l'installazione senza alcun problema, in un tempo ridotto rispetto ad un impianto tradizionale e con la massima qualità.

Plastica Alfa has been manufacturing and selling worldwide WATERPIPE PPR pipes and fittings as these stand out for reliability and a very complete range.

The multilayer FASER pipes, thanks to their dimensional stability, are best suited for heating and cooling systems, compressed air systems and various industrial applications.

A complete range of pipes, fittings, valves and accessories allow to carry out the installation without any problem, in a reduced time compared to a traditional system and with maximum quality.

TEMPERATURA E PRESSIONE D'ESERCIZIO/WORKING TEMPERATURE AND PRESSURE

SDR 7,4 (Tubi/Pipes)	SDR 6 (raccordi/fittings)
20°C - 24.5 bar	20°C - 30.9 bar
60°C - 12.3 bar	60°C - 15.5 bar
70°C - 8.1 bar	70°C - 10.2 bar

Campi di impiego Uses		MONOLAYER water PIPE	MULTILAYER water PIPE OFASER
		PP-R	PP-R
Impianti per acqua potabile calda e fredda Hot and cold potable water system		●	●
Riscaldamento a pavimento Underfloor heating systems		○	●
Riscaldamento a radiatori Radiator systems		○	●
Riscaldamento e raffreddamento idronico Hydronic heating and cooling distribution		○	●
Pompe di calore geotermiche Ground source heat pump systems		○	●
Teleriscaldamento District heating		○	●
Industria alimentare Food industry		●	●
Cantieri navali Shipyards		●	●
Recupero acqua riciclata e piovana Recycled water and rainwater		●	●
Impianti per aria compressa Compressed air systems		○	●
Mezzi di trasporto Means of transport		●	●
Irrigazione e settore agricolo Irrigation and Agricultural applications		●	●
Piscine Swimming pool systems		●	●
Impianti in strutture sportive Heating and cooling of sporting facilities		○	●
Sistemi industriali (1) Industrial systems		●	●
Industria chimica (1) Chemical industries		○	●
Sistemi antincendio sprinkler sottotraccia Concealed fire sprinkler system		●	●
Applicazioni all'esterno di edifici Outside building		-	-
Barriera all'ossigeno Oxygen barrier		-	-

TEMPERATURE OPERATIVE WORKING TEMPERATURE

MIN= -20 °C MAX: +95 °C

IDONEITÀ AL CONTATTO CON ACQUA POTABILE REGULATIONS FOR DRINKING WATER

DM 174-06/04/2004 (Italy), DM 23/04/2009 e Reg. UE n° 10/2011, W270 and KTW (Germany), ATA (Netherlands), Global Mark (Australia), ACS (France), WRAS (UK), NSF 61 (USA), NSF 51 (USA).

NORME DI RIFERIMENTO REFERENCE STANDARDS

Sistema/System

UNI EN ISO 15874, ISO 15495, DIN 16962, BS 4991, ASTM F238, CSA B137.11

Filetti BSP/BSP Threads:

UNI EN 10226 (ISO 7-1), BS 21, AS 1722.1

Filetti NPT/NPT threads:

ANSI-ASME B1.20.1

Prove/Tests:

UNI EN ISO 15874, DIN 16962, ISO 1133, ISO 3126, ISO1167, ISO 2501, ISO 9854, NSF 14.



KIP-101220/02
Classe 2 - 10bar - 70 °C

UNI EN ISO 15874-3

Tubo Monostrato in PP-R
PP-R Monolayer pipe

16TA

SDR 7,4

Codice Code	Diametro esterno (D) Outside diameter (D)	Barra Rod	Fascio Pack	Spessore nominale Nominal Wall Thickness (s)	Diametro interno Internal diameters	DN	Contenuto di acqua Water Content	Peso Weight
	mm			mm	mm		mm	l/m
16TA200-BI	20	4	120	2,8	14,4	15	0,163	0,148
16TA250-BI	25	4	80	3,5	18,0	20	0,254	0,230
16TA320-BI	32	4	48	4,4	23,2	25	0,423	0,370
16TA400-BI	40	4	32	5,5	29,0	32	0,660	0,575
16TA500-BI	50	4	24	6,9	36,2	40	1,029	0,896
16TA630-BI	63	4	12	8,6	45,8	50	1,647	1,408
16TA750-BI	75	4	12	10,3	54,4	50	2,323	2,004
16TA900-BI	90	4	8	12,3	65,4	65	3,358	2,869
16TA110-BI	110	4	8	15,1	79,8	80	4,999	4,298
16TA125-BI	125	4	4	17,1	90,8	90	6,472	5,529
16TA160-BI	160	4	4	21,9	116,2	100	10,599	9,036



Tubo Multistrato FASER
Multilayer FASER pipe
PPR-PPRGF-PPR



00TAF

SDR 7,4

Codice Code	Diametro esterno Outside diameter	Barra Rod	Fascio Pack	Spessore nominale Nominal Wall Thickness	Diametro interno Internal diameters	DN	Contenuto di acqua Water Content	Peso Weight
	mm			mm	mm		mm	l/m
00TAF200-BI	20	4	120	2,8	14,4	15	0,163	0,151
00TAF250-BI	25	4	80	3,5	18,0	20	0,254	0,236
00TAF320-BI	32	4	48	4,4	23,2	25	0,423	0,379
00TAF400-BI	40	4	32	5,5	29,0	32	0,660	0,589
00TAF500-BI	50	4	24	6,9	36,2	40	1,029	0,917
00TAF630-BI	63	4	12	8,6	45,8	50	1,647	1,442
00TAF750-BI	75	4	12	10,3	54,4	50	2,323	2,052
00TAF900-BI	90	4	8	12,3	65,4	65	3,358	2,936
00TAF110-BI	110	4	8	15,1	79,8	80	4,999	4,401
00TAF1125-BI	125	4	4	17,1	90,8	90	6,472	5,662
00TAF1160-BI	160	4	4	21,9	116,2	100	10,599	9,255



00SO

Tubo di sorpasso
Swan neck

Codice/Code	Misura/Size	Scatola/Box
00SO200-BI	20	150
00SO250-BI	25	100
00SO320-BI	32	60



20SO

Tubo di sorpasso
Swan neck

Codice/Code	Misura/Size	Busta/Bag	Scatola/Box
20SO200-BI	20	10	200
20SO250-BI	25	10	110



13MAWP

Manicotto
Socket

Codice/Code	Misura/Size	Busta/Bag	Scatola/Box
*13MA200WP-BI	20	20	900
13MA250WP-BI	25	20	600
13MA320WP-BI	32	10	300
13MA400WP-BI	40	5	180
13MA500WP-BI	50	5	100
13MA630WP-BI	63	5	55
13MA750WP-BI	75	-	48
13MA900WP-BI	90	-	20
13MA1110WP-BI	110	-	16

*SDR 5



13RMWP

Riduzione M-F
M-F Reducing Bush

Codice/Code	Misura/Size	Busta/Bag	Scatola/Box
*13RM2520WP-BI	25/20	20	900
*13RM3220WP-BI	32/20	20	700
13RM3225WP-BI	32/25	20	560
13RM4032WP-BI	40/32	10	300
13RM5040WP-BI	50/40	10	180
13RM6350WP-BI	63/50	5	110

*SDR 5



13RFPWP

Riduzione F-F
F-F Reducing bush

Codice/Code	Misura/Size	Busta/Bag	Scatola/Box
13RF4032WP-BI	40/32	10	220
13RF5040WP-BI	50/40	5	115
13RF6350WP-BI	63/50	-	-
13RF7563WP-BI	75/63	-	-
13RF9075WP-BI	90/75	-	-
13RF11090WP-BI	110/90	-	-



16GOWP

Gomito 90° F-F
90° F-F Elbow

Codice/Code	Misura/Size	Busta/Bag	Scatola/Box
*16GO200WP-BI	20	20	600
16GO250WP-BI	25	20	400
16GO320WP-BI	32	10	200
16GO400WP-BI	40	5	110
16GO500WP-BI	50	5	65
16GO630WP-BI	63	5	35
16GO750WP-BI	75	-	24
16GO900WP-BI	90	-	14
16GO1110WP-BI	110	-	8

*SDR 5



16GPWP

Gomito 90° M-F
90° M-F Elbow

Codice/Code	Misura/Size	Busta/Bag	Scatola/Box
*16GP200WP-BI	20	20	640
16GP250WP-BI	25	20	400
16GP320WP-BI	32	-	-

*SDR 5



16GP5WP

Gomito a 45° M-F
45° M-F Elbow

Codice/Code	Misura/Size	Busta/Bag	Scatola/Box
*16GP520WP-BI	20	20	660
16GP5250WP-BI	25	20	440
16GP532WP-BI	32	10	220

*SDR 5



16GM5WP

Gomito 45°
45° Elbow

Codice/Code	Misura/Size	Busta/Bag	Scatola/Box
*16GM520WP-BI	20	20	660
16GM525WPV	25	20	460
16GM532WP-BI	32	10	280

*SDR 5



16CAWP

Calotta
Cap

Codice/Code	Misura/Size	Busta/Bag	Scatola/Box
*16CA200WP-BI	20	20	1200
16CA250WP-BI	25	20	800
16CA320WP-BI	32	20	440
16CA400WP-BI	40	10	270
16CA500WP-BI	50	-	-
16CA630WP-BI	63	-	-
16CA750WP-BI	75	-	-
16CA900WP-BI	90	-	-
16CA1110WP-BI	110	-	-

*SDR 5



14TEWP

Tee a 90°
90° Tee

Codice/Code	Misura/Size	Busta/Bag	Scatola/Box
*14TE200WP-BI	20	20	400
14TE250WP-BI	25	20	280
14TE320WP-BI	32	10	140
14TE400WP-BI	40	5	70
14TE500WP-BI	50	5	40
14TE630WP-BI	63	2	24
14TE750WP-BI	75	-	18
14TE900WP-BI	90	-	10
14TE1110WP-BI	110	-	5

*SDR 5



14TRWP

Tee a 90° ridotta
90° Reducing Tee

Codice/Code	Misura/Size	Busta/Bag	Scatola/Box
14TR125WP-BI	25-20-25	20	300
14TR252020WP-BI	25-20-20	10	300
14TR225WP-BI	32-20-32	10	160
14TR325WP-BI	32-25-32	10	160
14TR132WP-BI	40-20-40	-	-
14TR232WP-BI	40-25-40	-	-
14TR332WP-BI	40-32-40	-	-
14TR540WP-BI	50-40-50	-	-
14TR650WP-BI	63-50-63	-	-
14TR763WP-BI	75-63-75	-	-
14TR975WP-BI	90-75-90	-	-
14TR11090WP-BI	110-90-110	-	-



13FFWP

Adattatore Femmina Filettato Femmina
female adaptor female thread

Codice/Code	Misura/Size	Busta/Bag	Scatola/Box
*13FF120WP-BI	20x1/2"	10	250
13FF125WP-BI	25x1/2"	10	250
13FF225WP-BI	25x3/4"	10	180
13FF032WP-BI	32x3/4	10	140
13FF132WP-BI	32x1"	10	120
13FF140WP-BI	40x1"	-	-
⊙ 13FF240WP-BI	40x1"1/4	5	50
⊙ 13FF150WP-BI	50 x 1"1/2	5	35
⊙ 13FF163WP-BI	63x2"	2	24

*SDR 5



13FMWP

Adattatore femmina filettato maschio
female adaptor male thread



16GFWP

Gomito a 90° fil. femmina
90° Female Elbow female thread



16GMWP

Gomito a 90° filettato maschio
90° Female Elbow male thread



16GZWP

Gomito terminale a 90° filettato femmina
90° end elbow female thread



14TFWP

Tee a 90° filettato femmina
90° Female Tee female thread



14TMWP

Tee a 90° filettato maschio
90° Female Tee male thread



13BTPM

Unione filettata maschio
Pipe union male

Codice/Code	Misura/Size	Busta/Bag	Scatola/Box
*13FM120WP-V	20x1/2"	10	240
*13FM220WP-V	20x3/4"	-	-
13FM125WP-V	25x1/2"	10	220
13FM225WP-V	25x3/4"	10	160
13FM032WP-V	32x3/4"	10	140
13FM132WP-V	32x1"	10	90
⊕ 13FM240WP-V	40x1"1/45	5	50
⊕ 13FM150WP-V	0x1"1/2	5	30
⊕ 13FM163WP-V	63x2"	2	20

*SDR 5

⊕ EXAGON INSERT

Codice/Code	Misura/Size	Busta/Bag	Scatola/Box
*16GF120WP-V	20x1/2"	10	200
*16GF220WP-V	20x3/4"	10	-
16GF125WP-V	25x1/2"	10	140
16GF225WP-V	25x3/4"	10	120
16GF232WP-V	32x3/4"	-	-
16GF332WP-V	32x1"	5	50

*SDR 5

Codice/Code	Misura/Size	Busta/Bag	Scatola/Box
*16GM120WP-V	20x1/2"	10	180
*16GM220WP-V	20x3/4"	-	-
16GM125WP-V	25x1/2"	10	120
16GM225WP-V	25x3/4"	10	100
16GM232WP-V	32x3/4"	-	-
16GM332WP-V	32x1"	5	50

*SDR 5

Codice/Code	Misura/Size	Busta/Bag	Scatola/Box
*16GZ120WP-V	20x1/2"	10	150
16GZ125WP-V	25x1/2"	10	100
16GZ225WP-V	25x3/4"	10	100

*SDR 5

Codice/Code	Misura/Size	Busta/Bag	Scatola/Box
*14TF120WP-V	20x1/2"x20	10	160
*14TF220WP-V	20x3/4"x20	-	-
14TF125WP-V	25x1/2"x25	10	110
14TF225WP-V	25x3/4"x25	10	110
14TF232WP-V	32x3/4"x32	-	-
14TF332WP-V	32x1"x32	5	40

*SDR 5

Codice/Code	Misura/Size	Busta/Bag	Scatola/Box
*14TM120WP-V	20x1/2"x20	10	150
*14TM220WP-V	20x3/4"x20	-	-
14TM125WP-V	25x1/2"x25	10	100
14TM225WP-V	25x3/4"x25	10	100
14TM132WP-V	32x1/2"x32	5	40
14TM232WP-V	32x3/4"x32	-	-
14TM332WP-V	32x1"x32	-	-

*SDR 5

Codice/Code	Misura/Size	Busta/Bag	Scatola/Box
13BPTM120-V	20x1/2"x20	10	200
13BPTM225-V	25x3/4"x25	10	130
13BPTM332-V	32x1"x32	5	80



I3BTPF

Unione filettata femmina
Pipe union female

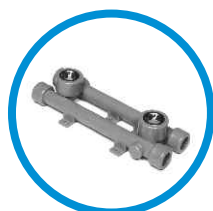
Codice/Code	Misura/Size	Busta/Bag	Scatola/Box
13BPTF120-V	20x1/2"x20	10	200
13BPTF225-V	25x3/4"x25	10	130
13BPTF332-V	32x1"x32	5	80



I8VC

Valvola a sfera compatta
Ball Valve

Codice/Code	Misura/Size	Busta/Bag	Scatola/Box
18VC120-V	20		60
18VC125-V	25		60
18VC132-V	32		35
18VC140-V	40		20
18VC150-V	50		13
18VC163-V	63		7
18VC175-V	75		4
18VC190-V	90		4
18VC1110-V	110		3
18VC1125-V	125		2
18VC1160BW-V	160		2



OODIMA

Collettore Dima filettato femmina
female threaded template

Codice/Code	Misura/Size	Busta/Bag	Scatola/Box
00DIMA120-V	20x1/2"	1	50
00DIMA125-V	25x1/2"	1	50



DIMA16GF

Collettore Dima femmina fisso
Fix female template

Codice/Code	Misura/Size	Busta/Bag	Scatola/Box
DIMA16GF120-V	20x1/2"	1	30
DIMA16GF125-V	25x1/2"	1	30



I8RA

Rubinetto d'arresto
Stopcock

Codice/Code	Misura/Size	Busta/Bag	Scatola/Box
18RA120-V	20	1	25
18RA125-V	25	1	25
18RA132-V	32	1	25



I8RM

Rubinetto d'arresto con margherita
Stopcock daisy handle

Codice/Code	Misura/Size	Busta/Bag	Scatola/Box
18RM120-V	20	1	20
18RM125-V	25	1	20
18RM132-V	32	1	20



I8RT

Rubinetto d'arresto prolungato con maniglia
Extended Stopcock with handle

Codice/Code	Misura/Size	Busta/Bag	Scatola/Box
18RT120-V	20	1	20
18RT125-V	25	1	20
18RT132-V	32	1	20



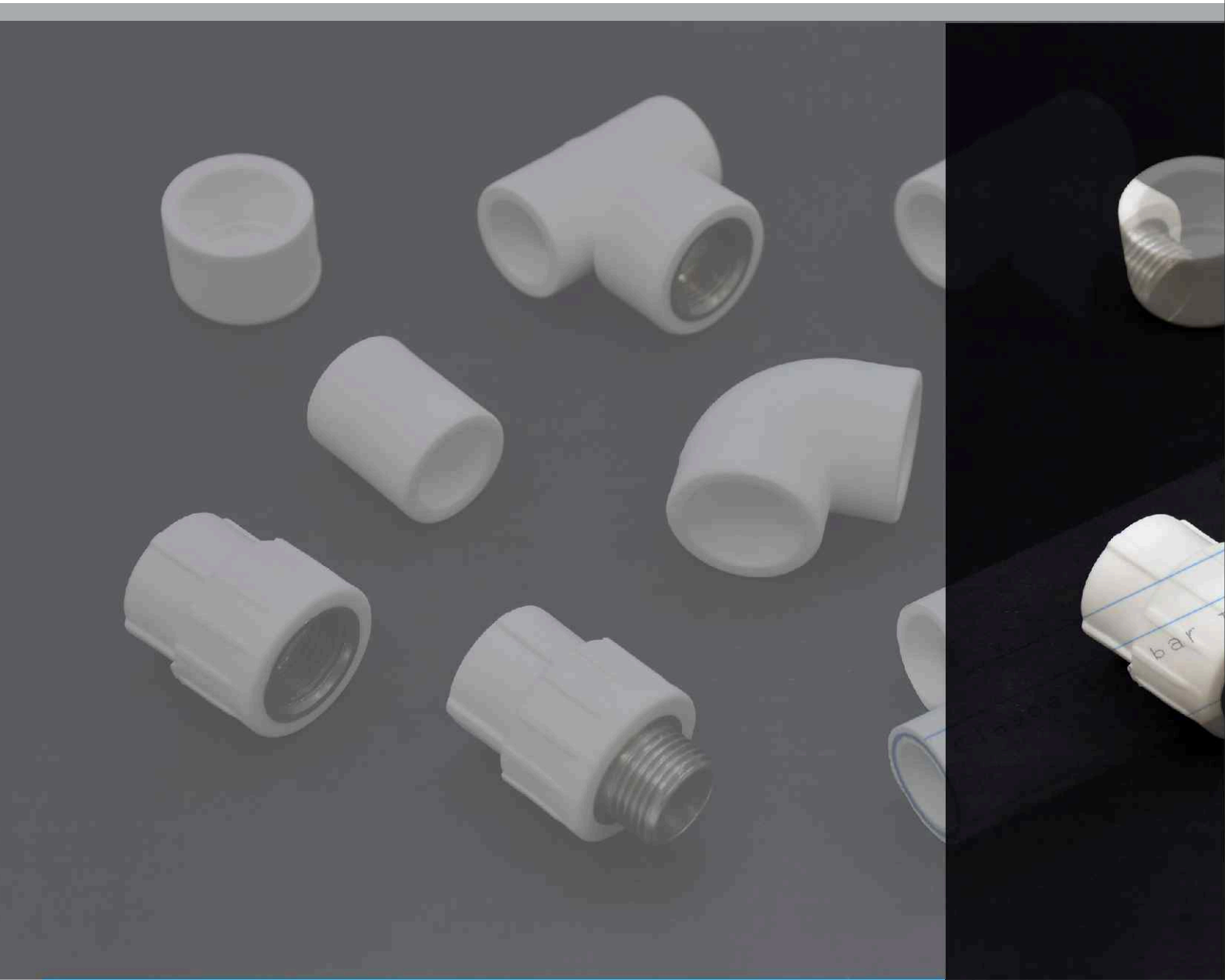
I6TL

Tappo di chiusura
Extended Plug

Codice/Code	Misura/Size	Busta/Bag	Scatola/Box
■ 16TL012-B	1/2"	50	800
■ 16TL034-B	3/4"	50	600
■ 16TL012-R	1/2"	50	800
■ 16TL034-R	3/4"	50	600



UNI EN ISO 9001: 2015
UNI EN ISO 14001: 2015



Zona Industriale C.da S. Maria Poggiarelli - 95041 CALTAGIRONE (CT) Italy
Tel. +39.0933.51973 - Fax +39.0933.53049
comunicazione@plasticalfa.it - exportdpt@plasticalfa.it - www.plasticalfa.it

