

A low-angle, upward-looking photograph of several modern skyscrapers with glass facades. The buildings are silhouetted against a clear, light blue sky. The perspective creates a sense of height and architectural scale.

# Rubberseal

Specialist Waterproofing Systems

**COMMERCIAL ROOFING**



## Contents

Page 3

About us and what we do

Page 5-8

Commercial Roofing Services

Page 9-10

Liquid Waterproofing

Page 11

EPDM Membranes

Page 12

SA EPDM Membranes

Page 13

Single- Ply Roofing

Page 14

Vapour Control

Page 15

Roofing Insulation

Page 16

Recovery Boards

Page 17

Green Roofing

Page 18

Installer Training

# About Rubberseal & What We Do

## Expertise You Can Trust

With over 20 years of experience, Rubberseal Ltd has become one of the UK's leading specialists in non-flame application, flat roofing, and waterproofing systems.

Our highly skilled team—including Area Managers, Laboratory Technicians, and Technical Representatives—brings extensive industry knowledge and exceptional customer support to every project.

We are committed to delivering high-quality roofing solutions and outstanding service from start to finish.

Rubberseal proudly supports the commercial roofing, modular construction, and merchant sectors with tailored solutions to meet your project needs.

## Why Rubberseal?

We use high performance, BBA approved roofing systems to provide you with superior, long-lasting, results.

We care about our environment, encouraging sustainable practice by refraining from naked flames and supplying only cold-applied roofing and waterproofing solutions.

We pride ourselves on our professional service. From point of enquiry to next day delivery, we deliver in a timely manner.

We provide technical support for our clients and offer onsite training and advice for contractors on both commercial and residential projects.



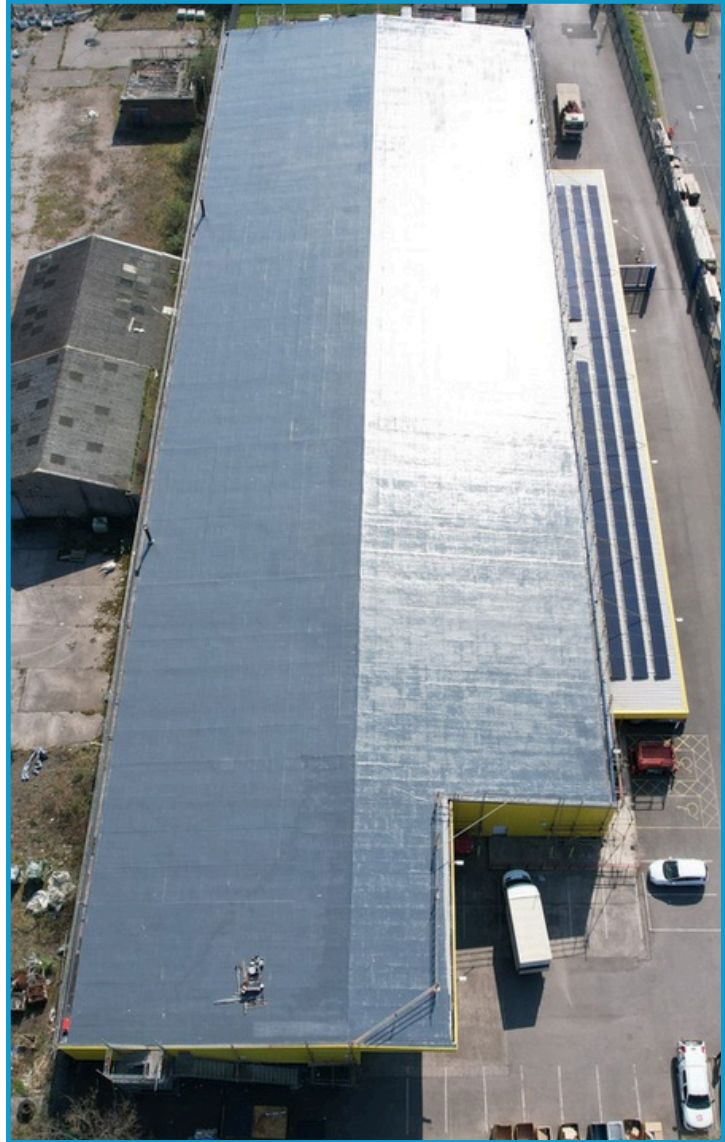
Flat Roofing



Waterproofing



Pitched Roofing



# Commercial Roofing Services



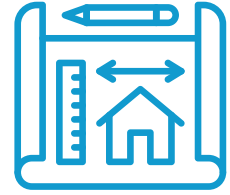
Consultations



Roof Survey



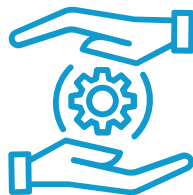
Moisture Mapping



System Specification



Nationwide Certified Contractors



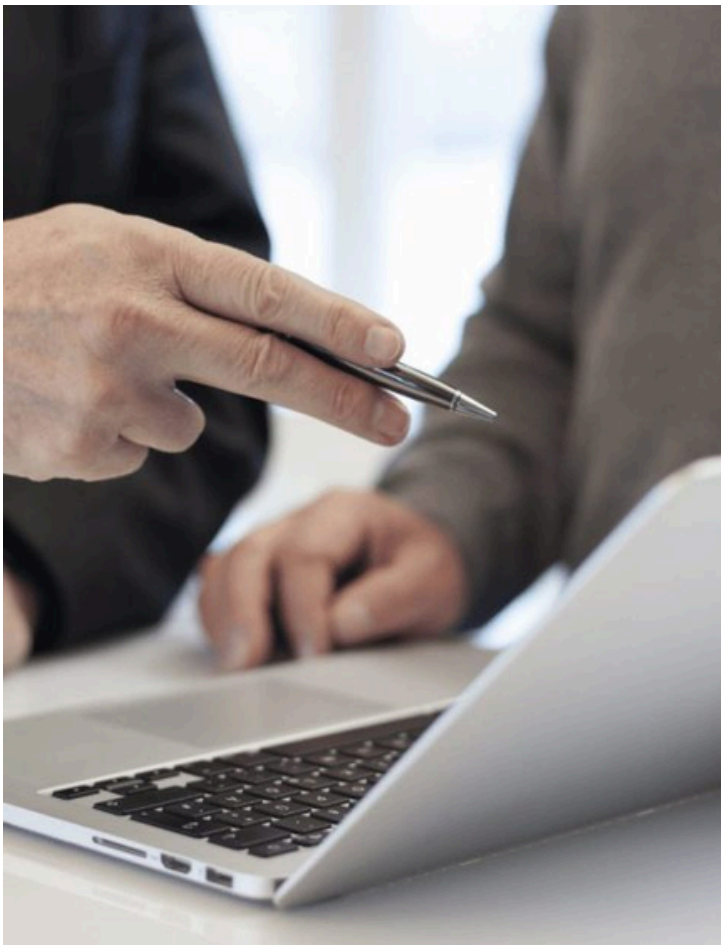
Technical Support



On-site Project Support



Aftercare & Sign off



## Consultations

Expert guidance is key to every successful flat and commercial roofing project. Rubberseal's consultation service provides tailored waterproofing solutions to meet your needs.

Working with contractors, architects, and developers, we offer detailed assessments, technical expertise, and product recommendations, considering every factor for optimal results.

With experience in EPDM, liquid roofing, and single-ply membranes, we identify the most durable, cost-effective solutions for new builds and refurbishments.

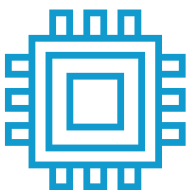
# Roof Survey



One of our highly skilled specialists will arrange a FREE on-site survey to discuss your project and carry out an initial roof assessment.

Using advanced surveying techniques and expert insight, we identify defects, potential issues, and structural concerns to ensure the right waterproofing system is specified for long-term durability, performance, and peace of mind.

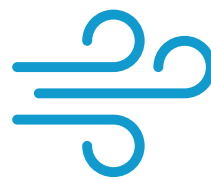
Our goal is to help you avoid costly repairs, minimise disruption, and extend the life of your roof with reliable, tailored solutions.



Core Sample Testing



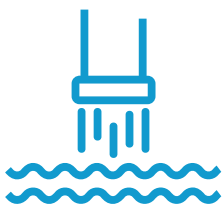
Moisture Mapping



Wind Uplift Testing



Adhesion Tests



Drainage Assessment



Thermal Imaging

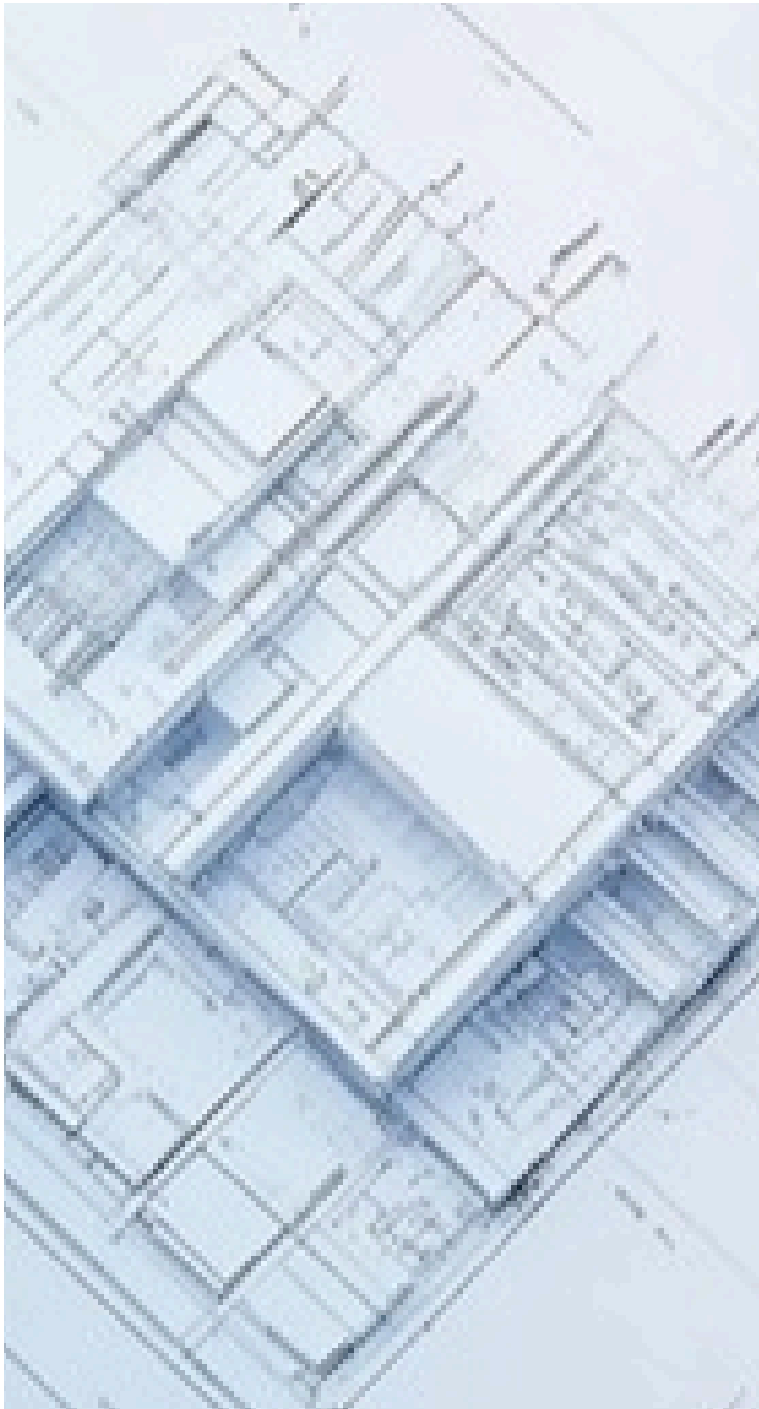


Drone Surveys



Condition Reports

# Design & Specification



Whether you're working on a new build or refurbishment, we collaborate closely with contractors, architects, and developers to specify a tailored roofing system that meets the highest standards for waterproofing, energy efficiency, sustainability, and ease of installation.

At Rubberseal, we don't just provide products—we deliver precision-engineered, high-performance roofing solutions that stand the test of time and exceed expectations. Our team offers technical support at every stage, from design and specification through to installation and aftercare.

With a broad product portfolio that includes EPDM, single ply, liquid-applied systems, insulation, and accessories, we ensure every component works together seamlessly to maximise performance and deliver long-term value.

# Aftercare & Sign Off

After project completion, we conduct a thorough sign-off to ensure all work meets the highest performance and durability standards.

You'll receive a detailed warranty for peace of mind, along with recommended maintenance guidelines to protect your roofing system long-term.

Our support continues with ongoing technical assistance, site visits, and expert guidance—ensuring your investment is backed by industry-leading service, reliability, and a commitment to long-term success through trusted partnerships and hands-on support.



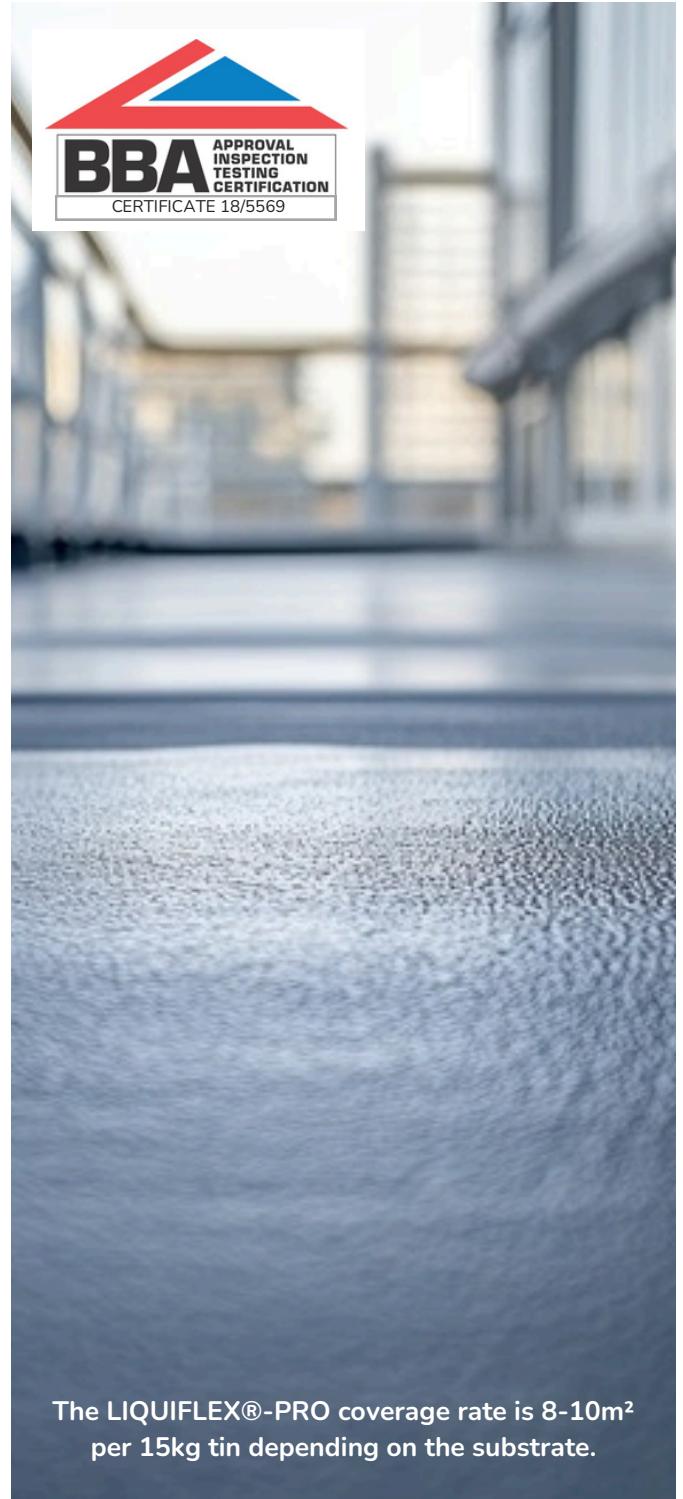
## Liquid Waterproofing

LIQUIFLEX®-PRO is a high-performance, BBA-certified, cold-applied liquid waterproofing system reinforced with polyester fabric. Its wet-on-wet application, single-component formula, and virtually odourless, fume-free composition make it a superior alternative to traditional liquid roofing.

Ideal for refurbishments, it forms a seamless, permanently elastic membrane, ensuring long-term waterproofing for complex roof details, balconies, terraces, and gutters. Compatible with most substrates, it eliminates the need for costly roof removal, saving time and reducing environmental impact.

### Benefits

- BBA Certified
- Moisture Curing
- Cold liquid applied, straight out of the tin
- Forms a waterproof, seamless membrane
- Easy application by roller or brush
- Non slip topcoat available
- Life Expectancy in excess of 25 years



The LIQUIFLEX®-PRO coverage rate is 8-10m<sup>2</sup> per 15kg tin depending on the substrate.

# LIQUIFLEX

## ULTRA PUMA



Liquiflex-Ultra PUMA is the latest innovation in our liquid waterproofing range, harnessing cutting-edge polyurethane methacrylate (PUMA) technology. Designed for extreme durability and flexibility, it outperforms traditional PMMA systems in high-movement conditions.

With an ultra-fast cure time of just 30–40 minutes, Liquiflex-Ultra PUMA significantly reduces downtime, minimising disruption and labour costs. Ideal for projects requiring speed, reliability, and long-lasting protection, it delivers exceptional performance even in extreme temperatures. Ideal for heavy-duty applications.

## Benefits

- Elastic Waterproofing System
- Ultra Strong
- Very Fast Cure Times
- Crack Bridging
- High Weather Resistance
- Available in any RAL code
- Cold Applied
- Cost Effective

# EPDM Membranes

## RUBBERGARD™ EPDM SA

When speed, efficiency, and durability matter, Elevate RubberGard SA is the ideal self-adhesive EPDM roofing solution. Designed for commercial and industrial flat and low-slope roofs, this next-generation membrane combines the proven performance of RubberGard EPDM with the ease of self-adhered technology.

Backed by over a century of rubber expertise from Elevate, RubberGard SA simplifies installation without compromising on durability or long-term waterproofing.

## Benefits

- Superior Durability
- Faster & Easier Installation
- Outstanding Adhesive Strength
- Superior Cold Weather Performance
- Low- Life Cycle Cost



# SA EPDM Membranes



## RUBBERGARD™ EPDM

When it comes to flat and low-slope roofing, choosing a system that guarantees durability, flexibility, and long-term performance is essential. Elevate RubberGard EPDM is the ultimate single-ply roofing solution, backed by over a century of rubber technology expertise from Elevate. Whether installed on commercial or industrial buildings, this advanced roofing membrane ensures exceptional waterproofing and protection in all climates.

## Benefits

- Superior Durability and Longevity
- High Flexibility and Elongation
- Low-life Cycle Cost
- 70 Years Life Expectancy
- Eco friendly
- BBA Certified
- Low Maintenance

# Single- Ply Roofing

## Rhenofol CV

Rhenofol CV is a high-performance roofing membrane designed for mechanical fastening, reinforced with polyester threads for superior strength and durability. Its two-layer construction features an inlay and UV-stabilized top film, ensuring reliable performance on various load-bearing slabs.

With minimal preparation required, Rhenofol CV allows installation to begin immediately upon delivery, in nearly any weather. It offers versatile fixing options, including mechanical attachment, adhesive application, or loose laying with ballast, making it both economical and efficient. Backed by Flachdach Technologie's trusted quality, it ensures projects are completed on schedule with ease.

## Benefits

- UV Resistant
- BBA Approved
- Best Weldability
- EPD Certified
- 20 Year Warranty
- Flame Free Installation
- Extremely Tear Proof



# Vapour Control



At Rubberseal, we offer a comprehensive range of vapour control layers to suit virtually every roofing application. Whether you're working on a warm roof build-up, refurbishment, or modular project, we have the right solution for you.

Our range includes:

- **ProVap SA Aluminium** – a high-performance, self-adhesive vapour control layer with aluminium reinforcement, which can be also used as a carrier membrane for Liquiflex Systems.
- **ProVap Sand** – ideal for torch-on systems, offering robust vapour resistance and sanded surface finish
- **ProVap Translucent** – a cost-effective option for basic warm roof applications, allowing visibility of substrate markings
- **ProVap Stik** – a user-friendly self-adhesive membrane designed for quick and clean application

Each option is designed for durability, compatibility, and ease of installation, helping to ensure long-lasting performance and regulatory compliance.

# Rubberseal Insulation Systems



Roof insulation plays a vital role in improving energy efficiency, reducing heat loss, and supporting effective drainage across both new build and refurbishment projects. Choosing the right insulation ensures compliance with building regulations and long-term performance.

At Rubberseal, we offer a wide range of insulation solutions to suit various roofing systems:

- Foil-faced PIR insulation – ideal for warm roof systems, offering excellent thermal performance
- Tissue-faced PIR insulation – compatible with liquid-applied systems
- Non-combustible mineral wool insulation – perfect for projects requiring fire-rated solutions
- Cut-to-fall tapered systems – designed to create drainage falls and prevent standing water

Whatever the project, our team can help you choose the right insulation for maximum efficiency and compliance.

# Rubberseal Recovery Boards

Recovery boards are essential in overlay and refurbishment roofing projects, providing a stable, protective layer over existing substrates while improving thermal performance, adhesion, and impact resistance. They help extend the lifespan of the new waterproofing system and ensure a smooth, reliable finish.

At Rubberseal, we supply high-quality recovery board options to suit a range of systems and project requirements, including:

- Elevate ISOGARD HD – a high-density, lightweight PIR cover board offering exceptional compressive strength, thermal performance, and ease of handling
- DensDeck Prime – a gypsum-based board with a coated glass mat facer, providing superior fire resistance, moisture resistance, and dimensional stability

Both options are ideal for use beneath EPDM, single-ply, and liquid systems, offering added protection and performance in overlay applications. Our team can advise on the best solution for your specific roofing build-up.



# Green Roofing

## Rubberseal modular green roof system.

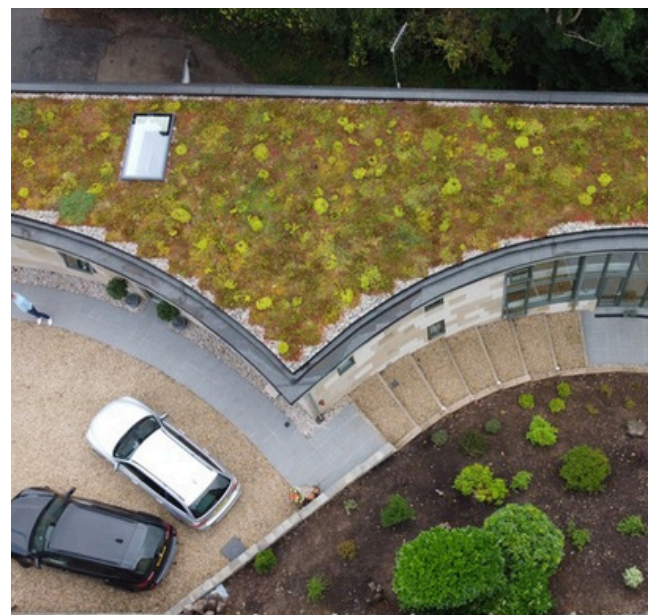
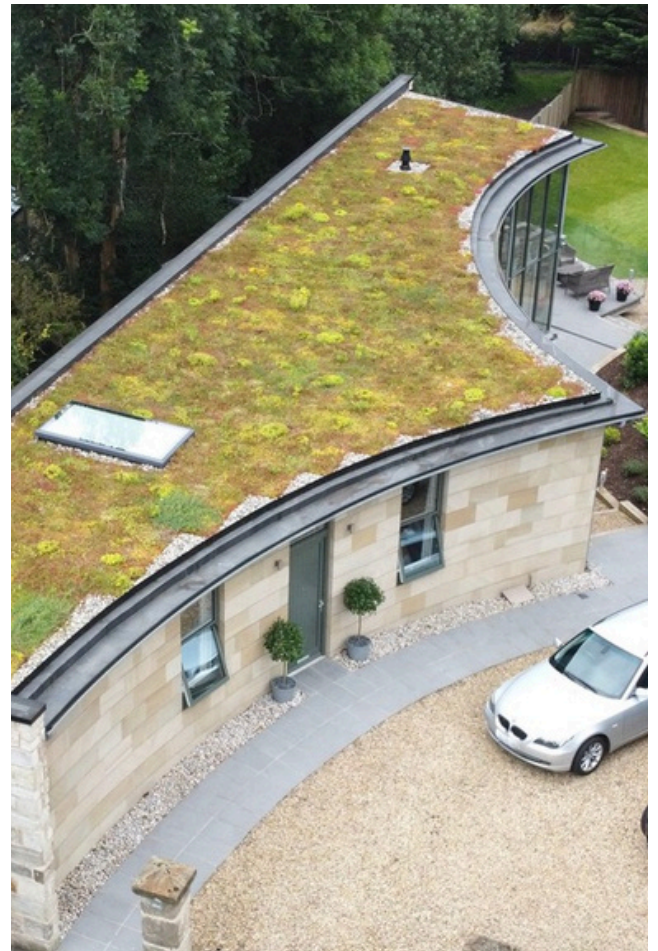
The Rubberseal ready-made green roof system is an all-in-one module for flat and slightly pitched roofs. It includes everything needed: substrate, established Sedum, a drainage layer, and a water reservoir. With this modular solution, there's no need to source materials separately or have specialist knowledge, making installation quick, clean, and straightforward.

A key component of any green roof is the waterproof membrane beneath. Rubberseal Liquiflex-Pro and Elevate EPDM are ideal, offering a seamless finish that prevents root penetration and protects the roof. The modular trays use a simple click-in system, making them easy to secure or remove for maintenance.

This innovative design delivers a durable, efficient, and low-maintenance green roof solution.

### Benefits

- Quick & Easy to Install
- Improves Air Quality
- Promotes Biodiversity
- Improves Roof Insulation
- Reduces Noise Pollution



# Installer Training



At Rubberseal, we believe expert installation is key to every successful flat roofing or waterproofing project. That's why we offer professional training tailored to contractors, roofers, and installers of all experience levels.

Our hands-on courses cover application techniques for EPDM membranes, liquid-applied systems, and single-ply roofing. Led by experienced trainers, each session provides practical experience, expert tips, and guidance on common challenges. We also offer advice on system selection, substrate preparation, and detailing.

Training is delivered at our dedicated training centres or can be arranged on-site for larger teams. Every session ensures your team is confident, competent, and fully equipped to deliver high-quality, warranted installations.

Invest in Rubberseal training—because great systems deserve expert installers.





# Rubberseal

Specialist Roofing Products

Contact us today on:



[info@rubberseal.co.uk](mailto:info@rubberseal.co.uk)



01290 559333



[www.rubberseal.com](http://www.rubberseal.com)