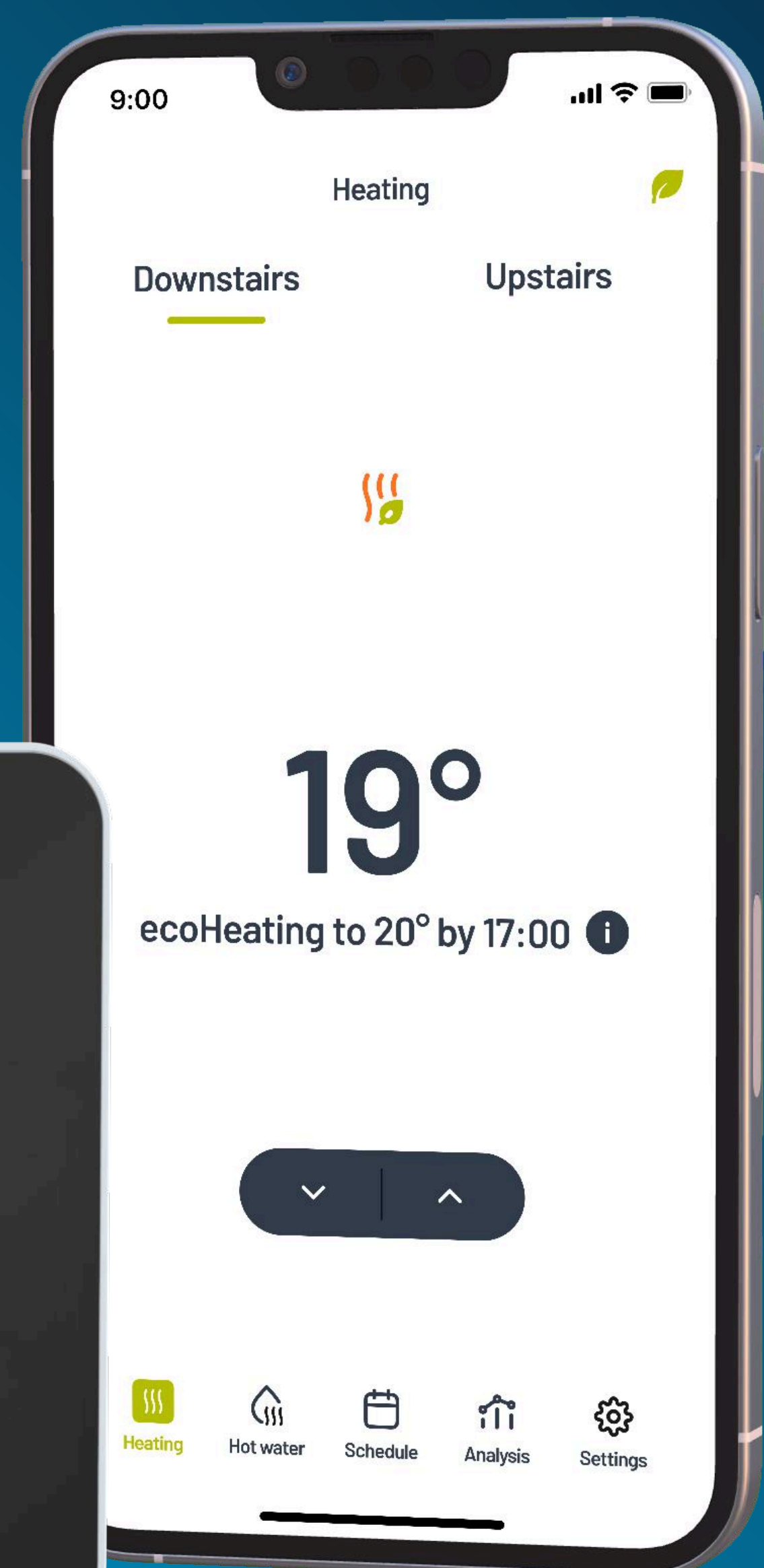
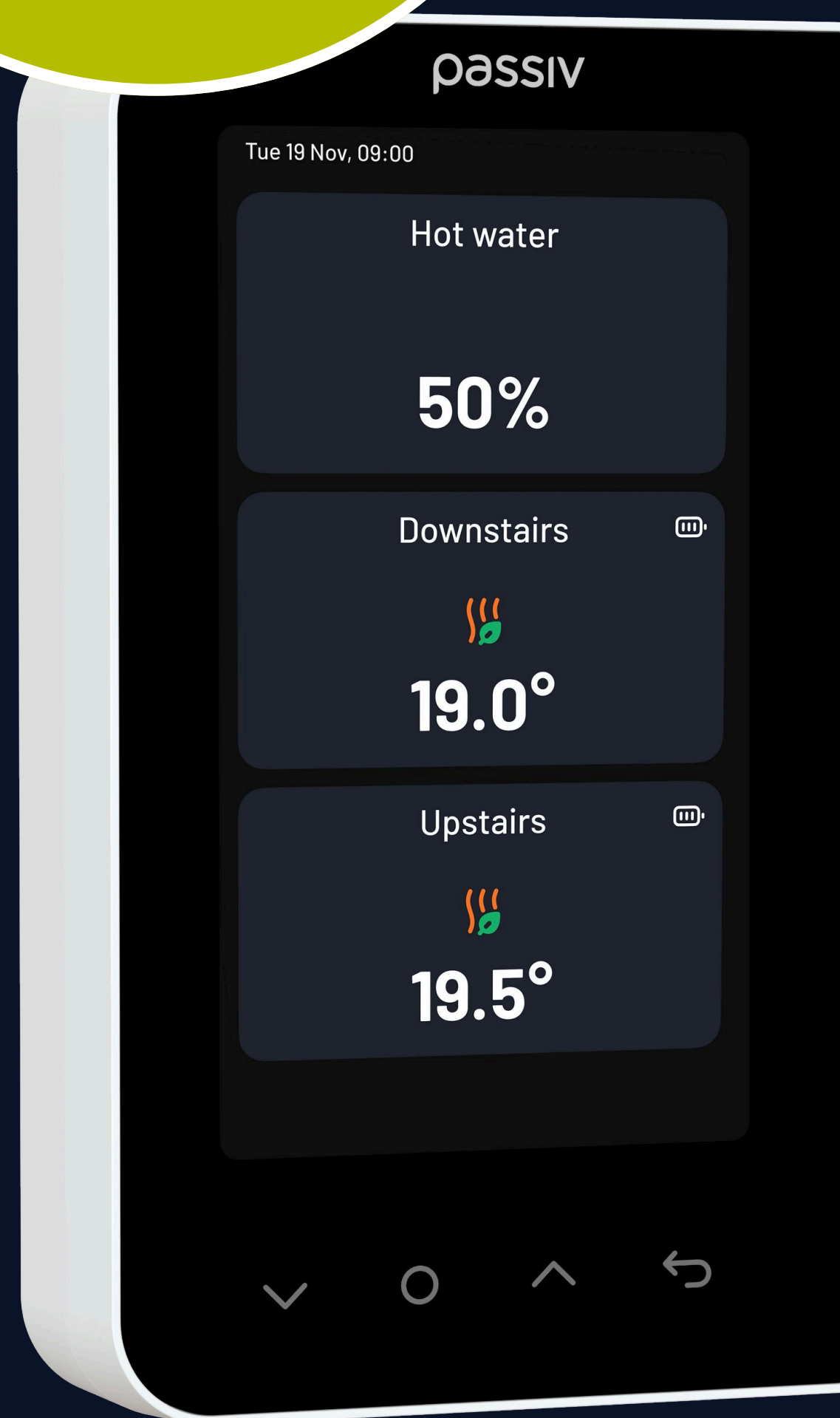


The smart way to control a heat pump

Passiv Smart Thermostat

FREE
Installer
Portal



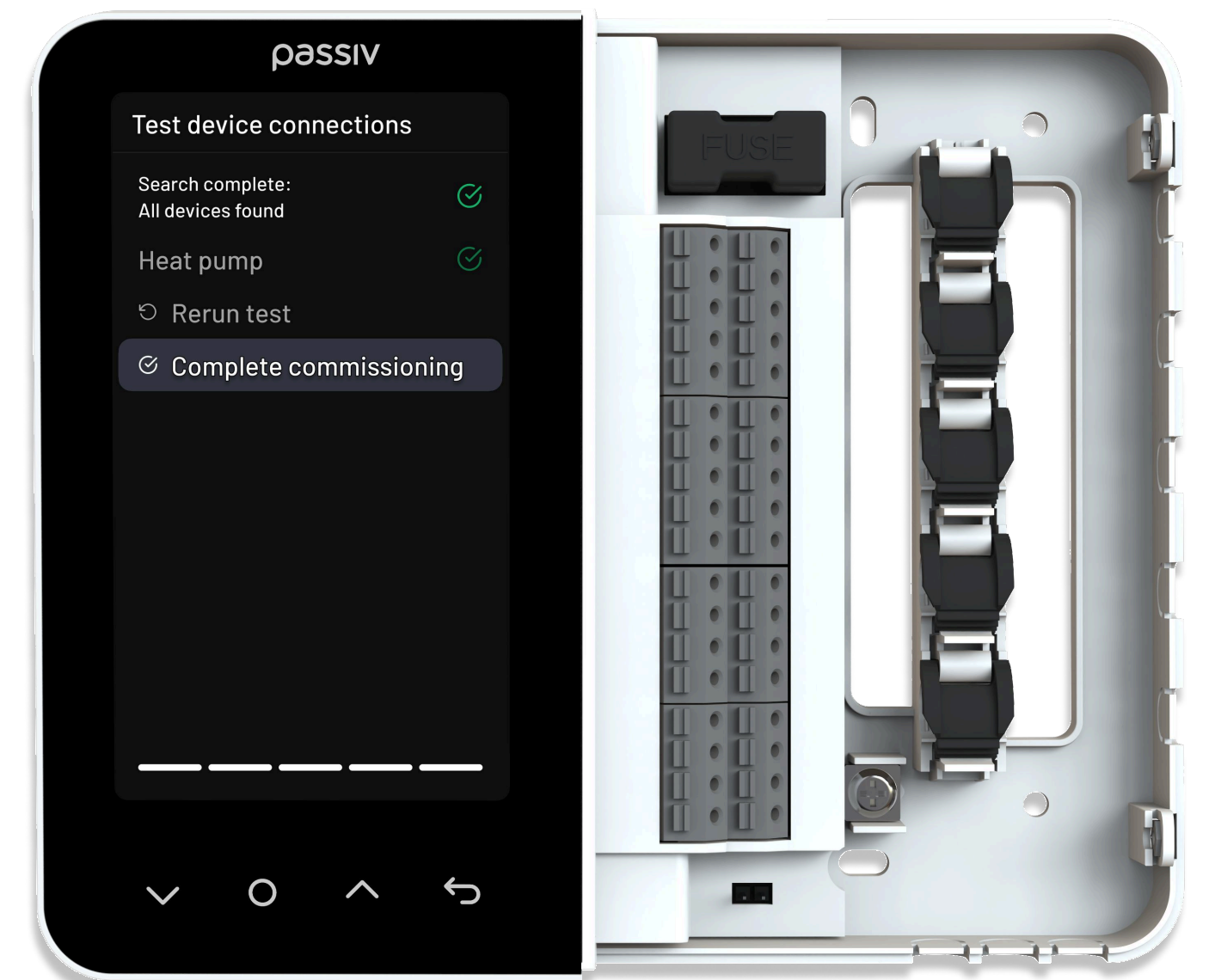
30% Lower Bills · No Subscription Fees
Automatic Weather Compensation

What is the Passiv Smart Thermostat?

It's a smart controller for heat pumps.

Unlike traditional controls that cycle a heat pump on and off, the Passiv Smart Thermostat directly controls flow temperature for maximum efficiency, perfect comfort and low bills.

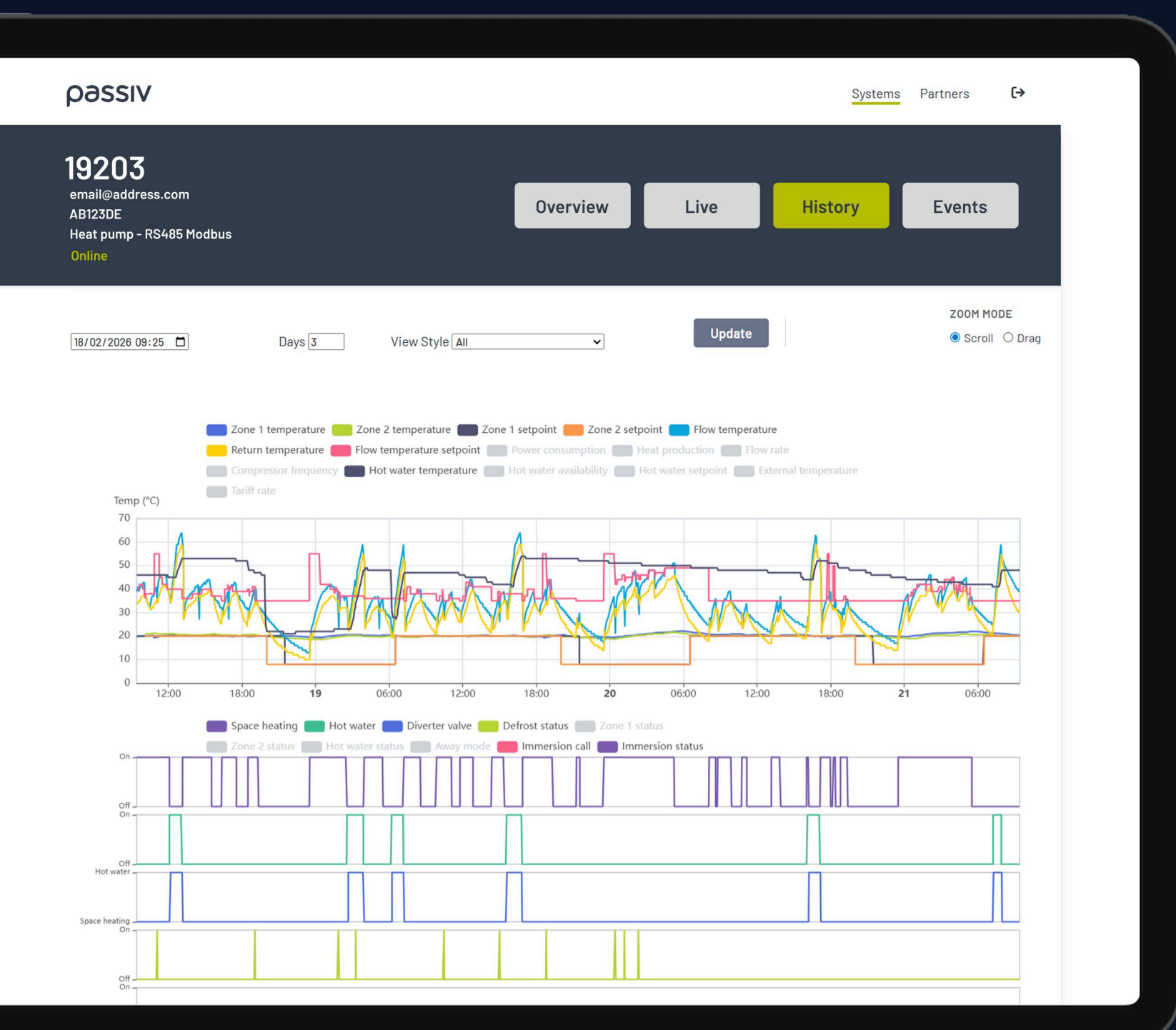
Grow your business with simpler heat pump installs, fewer callbacks and happy customers.



NOW AVAILABLE

Monitor your installs with the FREE Passiv Portal.

- View all installs from a single dashboard
- Live and historic heat pump data
- See flow temps, error codes and much more!



Why should you install it?

✓ Lower bills

Increases SCOP by 17%, optimises to time of use tariffs and solar PV.

✓ Simpler controls

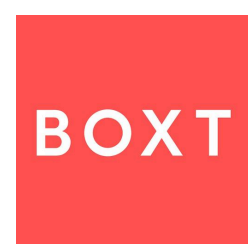
Proper in-home controls and homeowner app that deliver stable, consistent comfort.

✓ Faster installs

No weather curve setup and simple commissioning without app or internet.

NO ANNUAL FEES

Trusted by



How do you install it?

Extensive compatibility with 14+ leading heat pump brands in 1 or 2 zone kits.

Available nationwide from plumbers' merchants or renewable distributors.

Comprehensive UK support, installer resources and free installer training.

passiv

Find out more at passivuk.com