

What if flexibility became the standard...



wedi Sanbath® washbasins

Defined by design. Built for every layout.



...wedi®

an ARDEXGROUP Company

wedi Sanbath® Flex washbasin – one product, endless possibilities

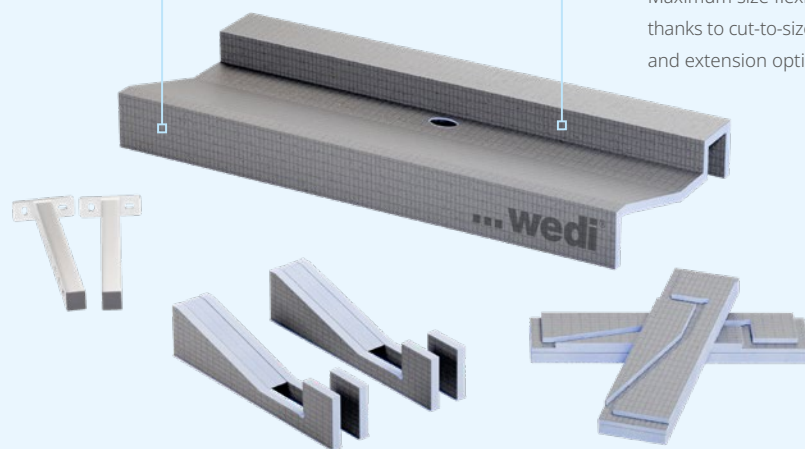
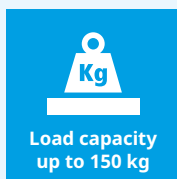
The wedi Sanbath Flex washbasin gives you maximum freedom in bathroom design. Whether for new build or refurbishment, compact bathrooms or larger family spaces, the 1200 × 500 × 120 mm unit can be cut to the required length and installed seamlessly in a continuous run.

Lightweight yet robust, it supports loads of up to 150 kg and is quick and straightforward to install. Mounting brackets are included as standard, while a dedicated fixing set for taps is available separately.

Its appearance is just as flexible as its dimensions. The surface can be fully tiled and finished to suit individual design preferences. The discreet wedi Fundo shower channel 1.0 completes the overall look with a clean, architectural finish.

Order, install, tile – and your washbasin is ready

Maximum size flexibility thanks to cut-to-size design and extension options



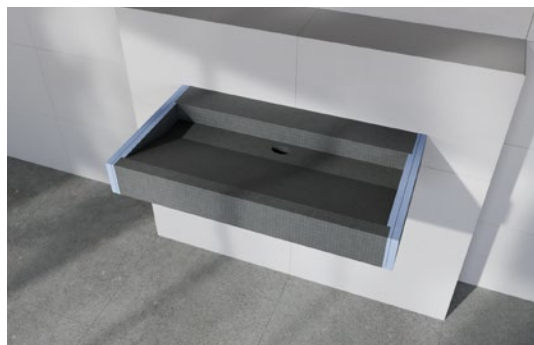
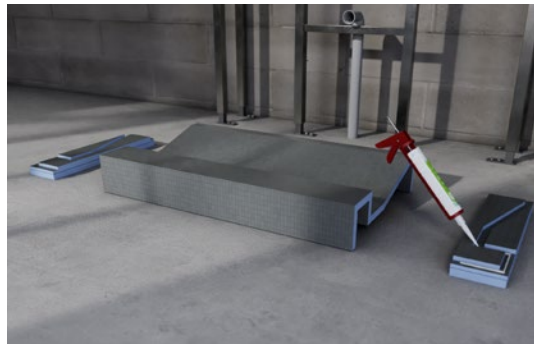
Key benefits at a glance

- Maximum flexibility during installation thanks to cut-to-size design
- Modern, versatile design options
- High strength and load capacity of up to 150 kg
- Quick and easy installation with included mounting brackets
- Available from stock as part of the standard range
- Compatible wedi system accessories available: wedi Fundo shower channel 1.0 in 1200 mm length, wedi Tools tap fitting set



Cut to size. Fit to any layout.

Whatever your installation requirements, the wedi Sanbath Flex washbasin adapts to suit. Whether in the construction phase or in a fully tiled bathroom, it offers maximum flexibility. Simply measure, cut to size and install.



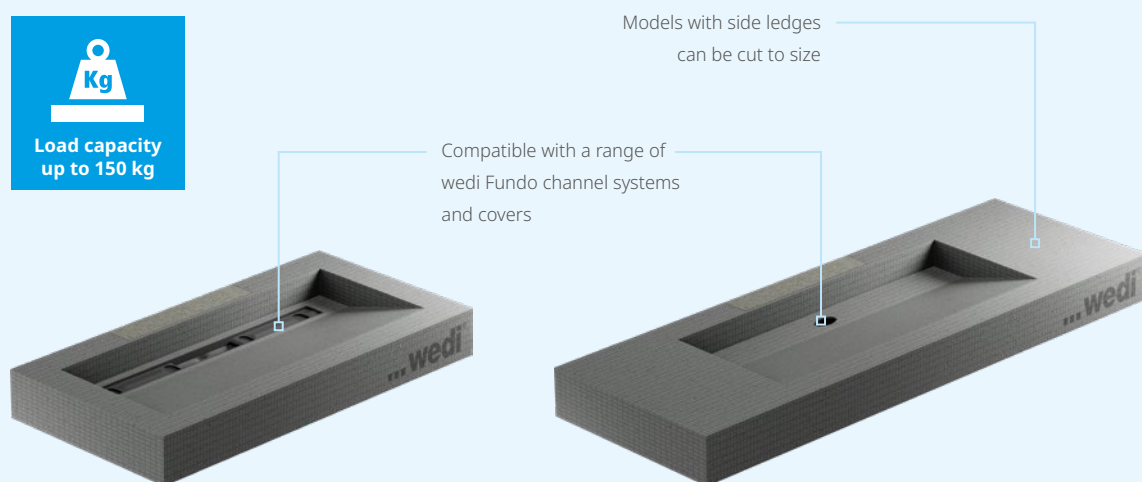
Note: The images shown are only a part of the installation. For the complete, professional installation, the valid installation instruction must be observed.

wedi Sanbath® Modular washbasin – six configurations, refined design

The wedi Sanbath Modular washbasin range offers six configurations. Choose your preferred size, with or without side ledges, and combine it with either a wedi Fundo channel cover or the slimline 35 mm wedi Fundo shower channel 1.0.

Lightweight yet robust, the modular washbasin supports loads of up to 150 kg. Tap mounting and support brackets for secure installation are included as standard. The side ledges can be individually cut on site and adjusted to suit specific installation requirements. All versions can be installed during the construction phase or in a fully tiled bathroom – quickly, easily and securely.

Design flexibility is equally important: all washbasins can be fully tiled and integrate seamlessly into any bathroom concept. A wide range of wedi channel covers, including premium finishes, enhances the modern, high-quality appearance. Ordering is just as straightforward: simply complete the order form with your project-specific requirements and submit it.



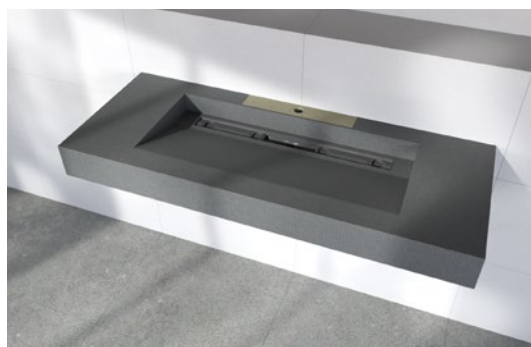
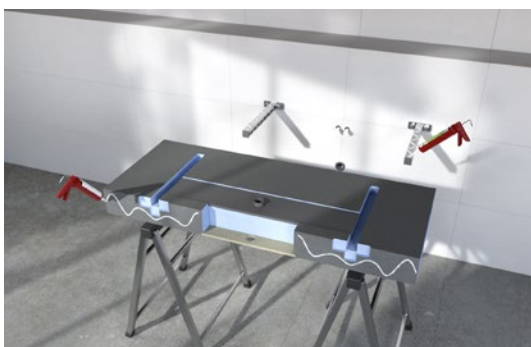
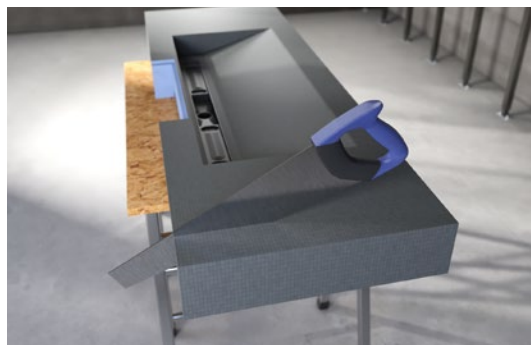
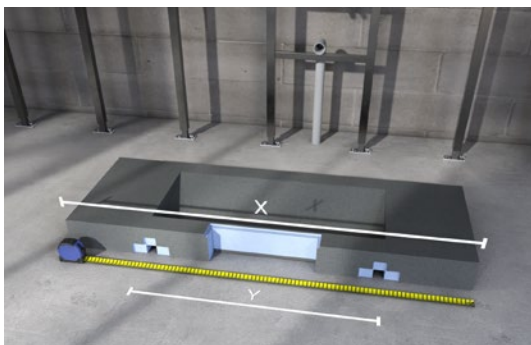
Key benefits at a glance

- Six distinct washbasin configurations to choose from
- Models with side ledges can be cut to size if required
- Compatible with a range of wedi Fundo channel systems and covers
- High strength and load capacity of up to 150 kg
- Quick and easy installation with included mounting brackets
- Modern, versatile design options



Choose your configuration. Define the design.

Whether during the construction phase or in a fully tiled bathroom, thanks to its high level of pre-fabrication, the wedi Sanbath modular washbasin can be installed quickly and easily – delivering maximum installation comfort and long-term reliability.



Note: The images shown are only a part of the installation. For the complete, professional installation, the valid installation instruction must be observed.

Flexible or modular? The choice is yours!

Whether you choose the wedi Sanbath Flex washbasin for maximum freedom in bathroom design, or opt for a made-to-measure wedi Sanbath Modular washbasin tailored to your requirements, both solutions stand for proven wedi quality. Fully integrated into the wedi system, they are 100% waterproof and can be installed quickly, easily and with long-term reliability.

Still deciding? We are happy to help. The comparison table below will guide you in selecting the solution that best suits your project and installation requirements.

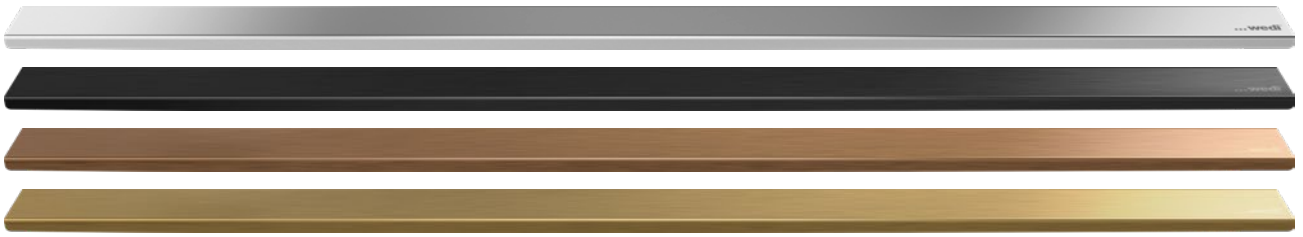
	wedi Sanbath Flex washbasin	wedi Sanbath Modular washbasin
Range	Standard	Customised
Side ledge	No	Yes and No (depending on variant)
Customisability	Yes, its length is flexibly adjustable	Yes, versions with a side ledge can be shortened
Channel system*	wedi Fundo shower channel 1.0	wedi Fundo shower channel 1.0 wedi Fundo channel cover
Mounting	Brackets included in the scope of delivery	Brackets included in the scope of delivery
Installation	The washbasin can be cut to size before assembly and installation	All variants are ready for installation
Continuous installation	Yes, seamless, extra-wide basin possible	Yes, with separation (ledge between)
Tap installation	Integration is possible; suitable mounting kit is available separately	Integration is possible; the fixture/reinforcement for this is included

* Shower channel is not included in the scope of delivery.

One design. One system. Built to work together.

wedi offers more: from the classic wedi building board and level-access wedi Fundo shower systems to a wide range of products that combine functional performance with modern design. Whether it's a robust shower bench in square or curved designs, a practical niche with or without integrated lighting that sits flush within the wall, or cladding elements for WC drywall installations and pipework – you'll find the right solution for every project within our standard range.

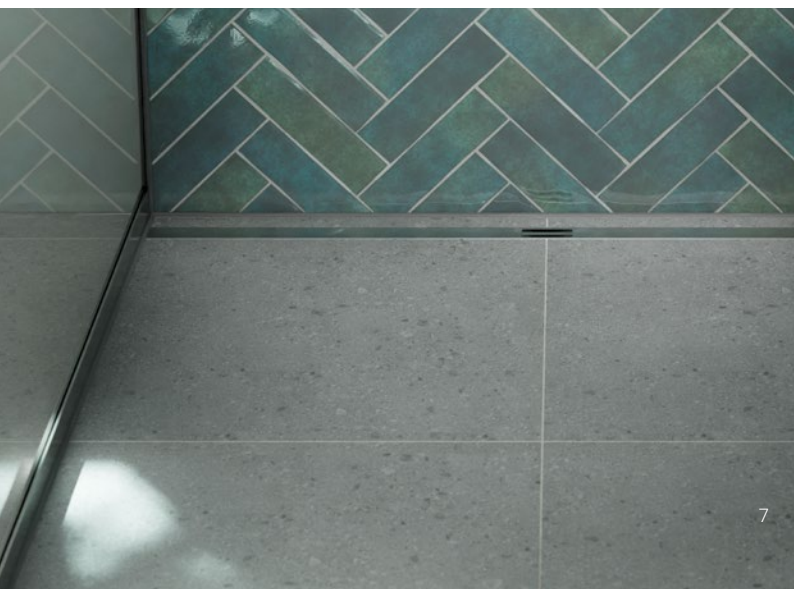
Did you know? You can create a consistent bathroom concept with coordinated washbasin and shower solutions. The **Fundo Flex shower system** features the same slimline shower channel 1.0 for a clean, minimalist look. Alternatively, classic or complete linear shower systems offer a wide choice of covers from classic finishes to metallic black, gold or rose gold accents.



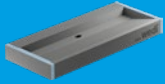
Standard: wedi Fundo channel covers in a range of finishes, including premium metallic options



Slimline: wedi Fundo shower channel 1.0 • stainless steel brushed



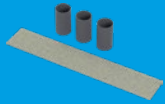
073784304 | wedi Sanbath® Flex washbasin



Width × depth × thickness	Edge-to-edge channel length*
1200 × 500 × 120 mm	1200 mm wedi Fundo-shower channel 1.0

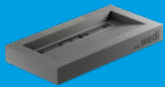
* The shower channel is not included in the scope of delivery, it must be ordered separately.

206553007 | wedi Tools® fitting fixing set



Scope of delivery	Contents
1 × reinforcement panel, 400 × 70 × 10 mm 3 × reinforcement tubes, 40 Ø × 75 mm	1 set (in a bag)

073606097 | wedi Sanbath® Modular washbasin



Width × depth × thickness	Channel length*
600 × 500 × 120 mm	300 mm wedi Fundo-channel cover
1040 × 500 × 120 mm	300 mm wedi Fundo-channel cover
1000 × 500 × 120 mm	700 mm wedi Fundo-channel cover
1440 × 500 × 120 mm	700 mm wedi Fundo-channel cover
1000 × 500 × 120 mm	1200 mm wedi Fundo-shower channel 1.0
1440 × 500 × 120 mm	1200 mm wedi Fundo-shower channel 1.0

The item number is identical for all versions. Please ensure that you provide the exact specifications of your washbasin on the data request form to avoid delays or incorrect orders.

* The shower channel/channel cover is not included in the scope of delivery, it must be ordered separately.

...wedi®
an ARDEXGROUP Company

Unit 4 Mercury Park, Mercury Way
Trafford Park, M41 7LY
Great Britain

+ 44 161 864 2336

info@wedi.co.uk

www.wedi.co.uk

SENTINEL HOLDING
INSTITUT



AVBARD
Images similar. Technical changes reserved.

UK