

EXTERNAL WALL INSULATION SYSTEMS



EXTERNAL WALL INSULATION SYSTEMS

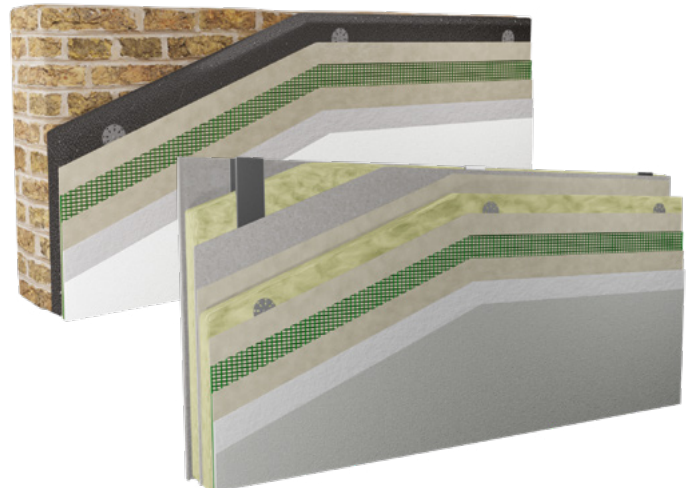
Improve thermal performance, lower energy costs, and transform building façades with our extensive range of External Wall Insulation systems available under the Weber and K Systems brands to suit every building and construction type.

Our EWI Systems transform the outside of a property, with durable, low maintenance finishes, including silicone thin coat renders, dash, brick slips and brick effect render. We invest extensively in third party testing and certification to deliver reliable results, with a key focus on fire safety, aesthetics and thermal comfort.

Our wide range of solutions will suit any project's needs: new-builds or refurbishments which are low-rise or high-rise construction. These systems are suitable for both mixed-use and residential developments.

Our combined technical expertise allow us to act as trusted technical advisors offering a range of support including:

- Detailed, bespoke project specifications in NBS format
- Both standard and bespoke detailing and CAD drawings
- In-house U-value, condensation risk analysis and wind-load calculations
- Fixing pull-out tests
- Management of high-risk building specification
- Tailored Site Support with our network of on-site experienced application specialists

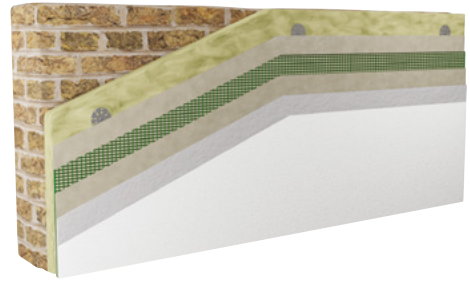


K Systems **M**

Mineral Wool

External Wall Insulation System for Masonry Substrates

- Offers highest fire performance, up to A1 classification
- Certification: BBA 20/5744 & 18/5570, NSAI 18/0399
- Can be used on buildings of any height
- Excellent acoustic properties



K Systems **E**

Expanded Polystyrene

External Wall Insulation System for Masonry Substrates

- Fire performance: B-s1, d0
- Certification: BBA 20/5744 & 18/5570, NSAI 18/0399
- Suitable for low/mid rise construction
- Cost effective solution

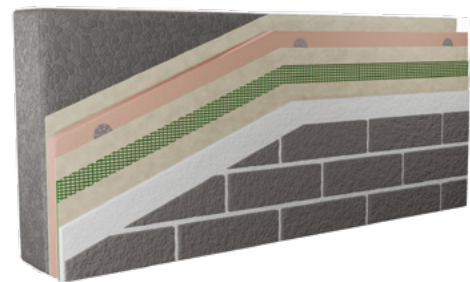


K Systems **P**

Phenolic

External Wall Insulation System for Masonry Substrates

- Fire performance: B-s1, d0
- Certification: BBA 20/5744 & 18/5570, NSAI 18/0399
- Suitable for low/mid rise construction
- High performance insulation for lower system thicknesses

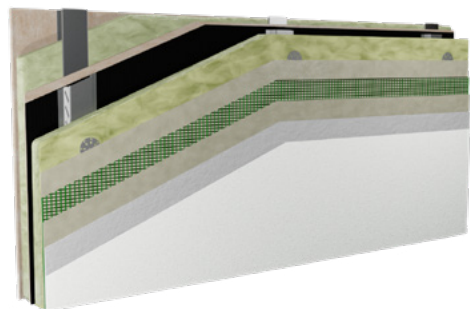


K Systems **Exicco**

Mineral Wool

Drained Cavity External Wall Insulation System for Steel & Timber Frame

- Fire performance: Up to A2-s1, d0
- Certification: BBA 20/5756
- Can be used on buildings of any height
- Available in a variety of finishes, each with a range of colours

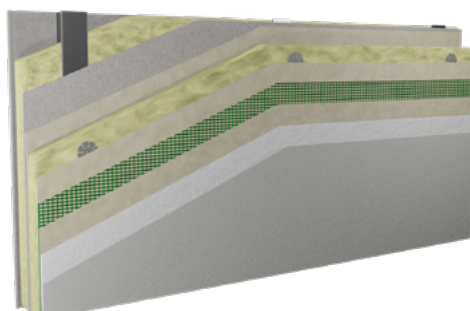


K Systems **Direct Fix**

Mineral Wool

External Wall Insulation System for Steel Frame

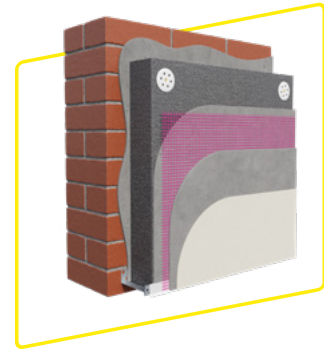
- KIWA BDA certified
- A1 fire rated thin coat renders & brick slip finishes available
- Ideal for low and high rise buildings
- Cost-efficient solution for steel frame structures



webertherm XM - Multi-layer system

External Wall Insulation System for Masonry, Steel Frame & Timber Frame Construction

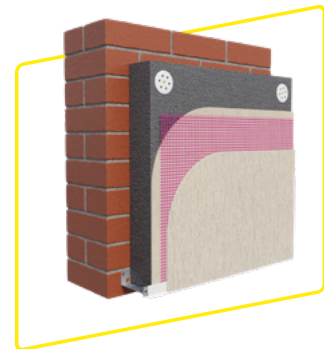
- Fire performance: Up to A2-s1,d0
- Certification: BBA 91/2691 and NSAI 09/0338
- Can be used on buildings of any height (with mineral wool insulation)
- Choice of insulant: webertherm MFD (mineral wool) and webertherm EPS (expanded polystyrene)



webertherm XP - XPress system

External Wall Insulation System for Masonry Substrates

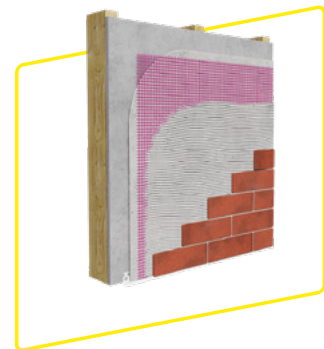
- Fire performance: Up to A2-s1,d0
- Certification: BBA 09/4670 and NSAI 09/0338
- Can be used on buildings of any height (with mineral wool insulation)
- Choice of insulant: webertherm MFD (mineral wool) and webertherm EPS (expanded polystyrene)



weberend MT system

Lightweight Façade System for Steel & Timber Frame

- Fire performance: Up to A2-s1,d0
- Certification: BBA 20/5790
- Can be used on buildings of any height
- Choice of render and weberwall brick finishes applied to approved render carrier boards



Exterior
Solutions

LARNE
9 Starbog Road • Larne
BT40 2TJ • Northern Ireland

FLITWICK
Dickens House • Enterprise Way
Flitwick • MK45 5BY • UK

ST. HELENS
Unit 203 • Mere Grange • Leaside
St Helens • WA9 5GG • UK