

Low-Band & Mid-Band 5G Frequencies,
Referred to as Sub-6, fall throughout the

600 to 6000 MHz Band.

Quicker, Higher Volume & Accurate Data Transfers.

6₂₆

m m 6 2 6

MAXIMIZE THE PERFORMANCE OF YOUR 5G DEVICES WITH MOBILE MARK'S ANTENNAS BELOW:



MULTIBAND MOBILE ANTENNAS



LTMWG900 SERIES

Configurable Up to 9-Connections
4x Sub-6 Cellular with
Up to 4x WiFi & 1x GNSS



LTMG 08 SERIES

Configurable up to 7-connections
2x Sub-6 Cellular with
Up to 4x WiFi & 1x GNSS



MXFG 08 SERIES

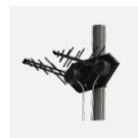
Narrow Footprint Design
2x Sub-6 Cellular with
Up to 4x WiFi & 1x GNSS



LLPG 08 SERIES

Low Profile Design
2x Sub-6 Cellular with
Up to 4x WiFi & 1x GNSS

INFRASTRUCTURE ANTENNAS



Y42700WB-2X

Dual Log Periodic, 600 – 6000 MHz
Slant 45° MIMO coverage
Heavy Duty Directional Coverage



OD3-600/6000

Omni-directional Sub-6 Cellular
Ground plane Independent
Option for Vibration Resistant Mobile



Y42700WB

Single Log Periodic, 600 – 6000 MHz
High Gain, Wide Beamwidth
Heavy Duty Directional Coverage

FIXED SITE ANTENNAS



TMA-WB1

Single Element, 420 - 6000 MHz
Rugged; Impact Resistant
NATO Military Mount Option Available



RM-WB1

Single element, Sub-6 Cellular
Surface, Mag or Direct Mount
Heavy Duty; Compact Profile

COVERAGE INCLUDES:
Band 71 at 617 – 698 MHz
CBRS at 3550 – 3700 MHz
LAA at 5 GHz

IDEAL APPLICATIONS:

Networks that require real-time,
low latency information. Public
Transportation, Industrial IoT,
Smart Cities, Utilities, Shipyards,
and CBRS Private LTE.