



HANDSFREE

R5

Vehicle Technology.

**PRODUCT  
CATALOGUE**





HANDSFREE

R5

## R5 CONTENTS

Introduction	5
Base Kit Bundle 5.7	6
Base Kit Bundle 7.0	7
Bench Test Kit	8
User Interface (UI)	9
Core Unit (CU)	10
Speaker 10W 10W 25 W	11
PTT Microphone	12
PTT Handset & Cradle	13
PTT Rugged Handset with Keypad	13
PTT Handset with Keypad & Display	13
PTT Button	14
PTT Gooseneck	14
PTT Gearstick	14
PTT Foot Pedal	14
Motorcycle Helmet with Wired Intercom System	15
Motorcycle Helmet with Bluetooth Intercom System	15
Bluetooth Intercom System	15
Wired Intercom System	15
Wallen Antenna	16
R5 Motorcycle PTT with Bracket	16
Motorcycle Remote (Volume / Channel)	16
R5 Fist Microphone	17
R5 Bluetooth Fist Microphone	17
R5 Desk Unit	18
R5 Desktop Microphone	18
R5 Wired Remote (Volume / Channel / PTT)	19
R5 Bluetooth Mouse	19
R5 Bluetooth Keyboard	19
Pump Bay Voice Terminal	20
PBVT Fist Microphone	20
PBVT IP65 Speaker 25W	20
Mounting Kit (Zirkona AMPS/Angled Mount)	21
Mounting Kit (Zirkona AMPS/AMPS)	21
R5 User Interface Magnetic Mount (AMPS)	22
R5 User Interface Hinged Surface Mount (AMPS)	22
Panorama Antenna	23
Sure Antenna	24
Field Services (Installation)	25
Field Services (Survey, Warranty)	26
Additional Products & Services	27
Additional Products & Services	28
Additional Products & Services	29
Additional Products & Services	30
Installation Advertisement	31



 HANDSFREE **R5**

# Mission Critical Communication

Handsfree R5 is the new MCX LTE Fixed Vehicle Device Solution developed, and supplied by Handsfree Group.

**VOICE • PTT • DATA • VIDEO**

**Book our Demo Vehicle Now!**

go to [handsfreer5.com](http://handsfreer5.com) and register  
for a Demo Vehicle or a Fleet Survey

To find more about  
Handsfree R5 please  
call **0161 864 6440** or  
email [sales@handsfree.co.uk](mailto:sales@handsfree.co.uk)

  
Handsfree Group

*Designed & Built for Public Safety*



## HANDSFREE GROUP

...the future of Critical Communications is here

We are a specialist single-point destination supporting first response clients including Police, Fire Services and Ambulance with adaptable vehicle technology solutions. Handsfree Group successfully support our emergency service clients in the supply and installation of critical communications, fixed vehicle device (FVD) technology solutions, tracking, telematics and safety equipment.

### Specialist installations

Our expert team supply and install the latest market leading emergency vehicle technology on-site and also through our specialist vehicle installation centre, a high specification purpose built 12,000 sq ft workshop facility.

We support our emergency service clients with a wide range of critical communications, safety and fixed vehicle device solutions (FVD) along with Datalive Tracking and Telematics solutions. Our installation team has over 15 years specialist international emergency service experience. Handsfree Group installers are FITAS accredited and work to the highest FCS 1362 industry standards.

Our dedicated expert team offer full coverage across the UK, USA and Ireland. Given our experience serving the Police, Fire and Ambulance services, we know how to handle both bespoke and standard vehicle installations of critical vehicle communication, safety and security solutions.




**CODE:**  
**R5-BASEKIT-570**



**R5 5.7" Base Kit Bundle**

**R5-CU**  
Core Unit



**R5-UI570**  
5.7-inch User Interface Panel



**R5-PTT-Button**  
PTT Button  
Basic button with 2M wire



**R5-MIC**  
R5 PTT Microphone



**R5-SPK-10W**  
10-Watt Interior Loudspeaker



**R5-CU-UI-5M**  
R5 Core Unit to User Interface Cable 5M



**R5-CU-A-5M**  
R5 Core Unit to Audio Cable 5M



**R5-CU-IO-5M**  
R5 Core Unit to IO Cable 5M






**CODE:**  
**R5-BASEKIT-700**



**R5 7.0" Base Kit Bundle**

**R5-CU**  
Core Unit



**R5-UI70**  
7-inch User Interface Panel



**R5-PTT-Button**  
PTT Button  
Basic button with 2M wire



**R5-MIC**  
R5 PTT Microphone



**R5-SPK-10W**  
10-Watt Interior Loudspeaker



**R5-CU-UI-5M**  
R5 Core Unit to User Interface Cable 5M



**R5-CU-A-5M**  
R5 Core Unit to Audio Cable 5M

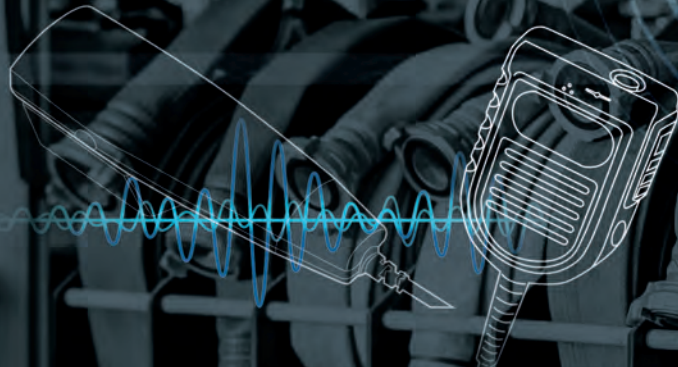


**R5-CU-IO-5M**  
R5 Core Unit to IO Cable 5M





# HANDSFREE R5



## R5 BENCH TEST KITS



**CODE:**  
**R5-BENCH-KIT**

### R5 Bench Test / Development Kit

**R5-ADAPTER-240V**  
R5 Power Adapter 240V



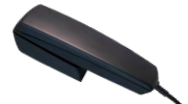
**R5-CASE-MAX**  
R5 Tough Case - IP67 - MAX 620x460x340mm



**R5-FIST**  
ML50 Fistmic



**R5-HSET**  
R5 Telephone Handset with PTT



**R5-ANT-BAT-3M-P**  
LTE/GPS/WiFi Batwing Antenna 3m



**R5-UIM-DESK-STAND**  
R5 Circular UI Desk Stand



**R5-CU-PWR-ADP**  
R5 Core Unit Bench Test Power Harness, with Ignition switch



**R5-USBA-USBA-1M**  
**R5-SCREWDRIVER-T5H**  
USB-A to USB-A Cable 1m  
Security Screwdriver - T5H







## R5 BASE KIT

### R5 5.7" User Interface Panel

 **CODE:**  
R5-UI570

- 5.7 inch multi touch screen usable with clinical gloves.
- Bright sunlight readable display.
- Dedicated buttons for PTT, emergency, volume, etc.
- Programmable hot keys usable with heavy gloves, eg. Lights, Siren, Talk Group Select, Status Messages, D2D, ANPR, etc.
- 1.8mm Gorilla glass; rugged, built for harsh environments.
- IP67 for use inside or outside of vehicle.
- Versatile AMPS mounting.



### R5 7" User Interface Panel

 **CODE:**  
R5-UI70

- 7 inch multi touch screen usable with clinical gloves.
- Bright sunlight readable display.
- Dedicated buttons for PTT, emergency, volume, etc.
- Programmable hot keys usable with heavy gloves, eg. Lights, Siren, Talk Group Select, Status Messages, D2D, ANPR, etc.
- 1.8mm Gorilla glass; rugged, built for harsh environments.
- IP67 for use inside or outside of vehicle.
- Versatile AMPS mounting.



### OEM Integrated System

 **CODE:**  
OEM

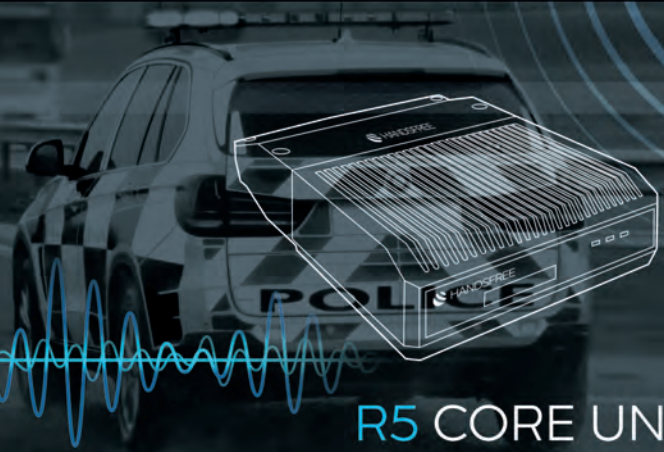
- Improves driver safety
- Optimises control of vehicle systems
- Aids compliance with vehicle use legislation
- Reduces cost by simpler equipment integration
- Increases de-fleeting resale value of the vehicle
- Emergency, volume, brightness hard key controls



\* Product currently under development. Ask for further details



# HANDSFREE R5



R5 CORE UNIT

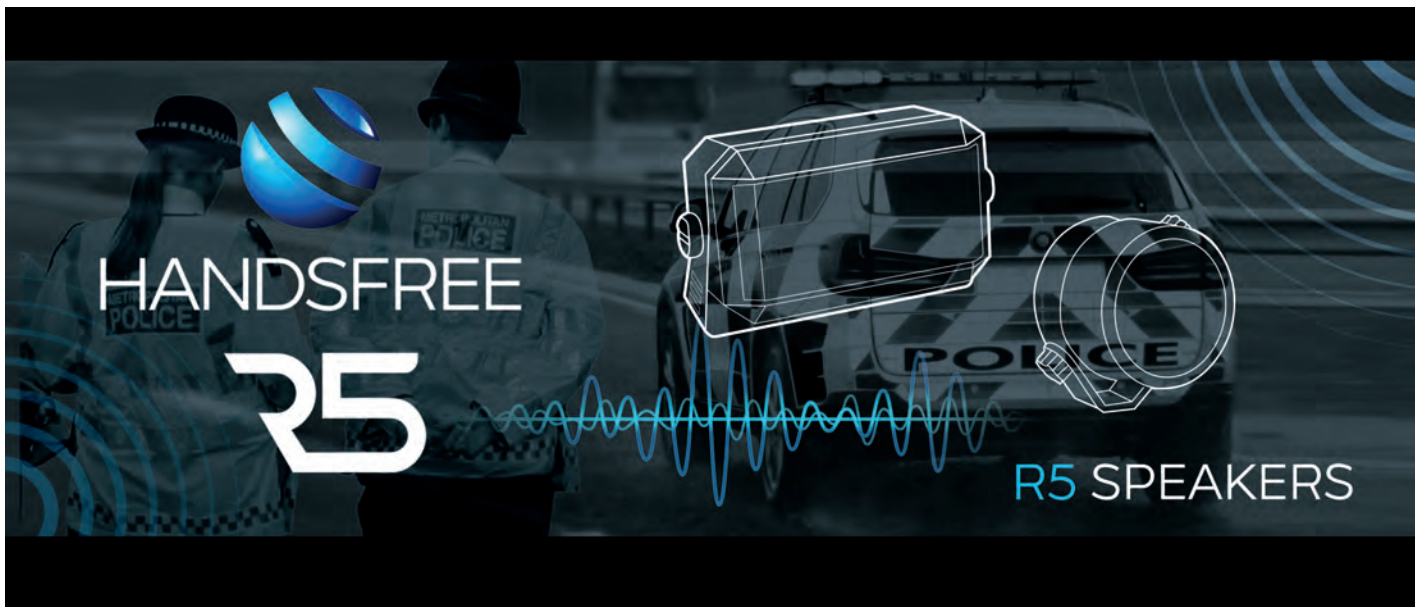
## R5 Core Unit



**CODE:**  
**R5-CU**

- R5 Core Unit
- Android 10 processor with full GMS certification.
- Full ESN MCPTT support with configurable Kodiak integration.
- 4G / LTE support with dual high quality antenna interfaces.
- Location via GPS, Galileo, BeiDou & GLONASS.
- Dual R5 UI Panel interfaces with support for multiple UI panel sizes.
- In Vehicle high speed Wi-Fi hot spot with dual Wifi antennas.
- Bluetooth 5.0 support for audio accessories and other devices.
- Standard voice calling with VoLTE support.
- Direct Mode (Device to Device) Airwave Integration.
- Dual Ethernet interfaces for tethering in-vehicle tablets, ANPR or other systems.
- CAN interface available for user applications.
- RS232 interface available for user applications.
- USB 3.0 & Dual USB 2.0 interfaces available for the user.
- Eight Digital Inputs and Outputs available for the user.
- 160mm x 200mm x 50mm





## R5 SPEAKERS

### R5 10 W Speaker


**CODE:**  
**R5-SPK-10W**


- High power (10 Watt) loud speaker with low distortion.
- Rugged plastic housing.
- Frequency range optimised for radio communication.
- Metal retaining bracket allowing adjustable orientation.
- Plug and play over moulded connectors.

### R5 10 W Speaker Amplified


**CODE:**  
**R5-SPK-10W-AMP**


- Extension speaker with internal 10W audio amplifier.
- High power (10 Watt) with low distortion.
- Rugged plastic housing.
- Frequency range optimised for radio communication.
- Metal retaining bracket allowing adjustable orientation.
- Plug and play over moulded connectors.

### R5 Speaker Micro 10W


**CODE:**  
**R5-SPK-10W-MICRO**


- High power (10 Watt) with low distortion.
- Small form factor for easy space saving installation.
- Rugged plastic housing.
- Frequency range optimised for radio communication.
- Metal retaining bracket allowing adjustable orientation.
- Plug and play over moulded connectors.

### R5 Speaker 25W - IP66


**CODE:**  
**R5-SPK-25W-IP**


- High power (25 Watt) horn speaker with low distortion.
- Rugged, flame resistant, waterproof IP66 housing.
- Very compact design.
- Salt fog resistant (IEC 60068; VW 80101).
- Frequency range optimised for radio communication.
- Metal retaining bracket allowing adjustable orientation.





**R5 MICROPHONES**

**R5 Handsfree Microphone**

 **CODE:**  
**R5-MIC**

- Mounts directly on a surface such as vehicle headlining.
- Directional microphone with noise cancelling.
- Electret mic with built in amplifier.
- Small discrete design.
- Thin flexible cable for easy install.
- Plug and play over moulded connector.



Overmoulded  
2 Pin Molex  
Connection



**R5 Flush N/C Microphone (ME17)**

 **CODE:**  
**R5-MIC-FLUSH**

- Mounts flush within a panel cutout.
- Directional microphone with noise cancelling.
- Electret mic with built in amplifier.
- Small discrete design.
- Thin flexible cable for easy install.
- Plug and play over moulded connector.



Overmoulded  
2 Pin Molex  
Connection



# HANDSFREE R5

R5 HANDSETS

## R5 HANDSETS

### R5 Telephone Handset with PTT



**CODE:**  
**R5-HSET**

- Wired handset with excellent audio quality for private conversations.
- Large PTT button on underside, suitable for left or right handed users.
- Noise compensating microphone.
- Elegant slimline design, ideal for installation in limited space.
- Mounting cradle with automatic wear free on/off hook detection.



### R5 Rugged Screen PTT Handset



**CODE:**  
**R5-HSET-PTT-KP-DISP-RUGGED**

- Rugged IP67 wired handset with excellent audio quality for private conversations.
- Dedicated emergency button.
- Noise compensating microphone.
- Can be used as either telephone handset or fistmic.
- Keypad e.g. to select talk group or dial a voice call.
- Display to show system info e.g. current talk group.
- Large PTT button on underside, suitable for left or right handed users.
- Proximity sensor for automatic selection between hand set and fistmic modes.



### R5 PTT Handset with Screen



**CODE:**  
**R5-HSET-PTT**

- Wired handset with excellent audio quality for private conversations.
- Large PTT button on underside, suitable for left or right handed users.
- Noise compensating microphone.
- Elegant slimline design, ideal for installation in limited space.
- Mounting cradle with automatic wear free on/off hook detection.
- Colour screen & keypad (alpha numeric).





## R5 PTT DEVICES

### R5 PTT Button

 **CODE:**  
**R5-PTT-BUTTON**



- Robust PTT Button with long life switch.
- Mounts in a circular panel cutout.
- Capable of discreet installation.
- Plug and play with R5 ecosystem.

### R5 PTT Button Gooseneck Stalk

 **CODE:**  
**R5-PTT-STALK**



- Robust PTT Button with long life switch.
- Gooseneck stalk, ability to position for easy driver access.
- Simple, versatile mounting bracket.
- Plug and play with R5 ecosystem.

### R5 Foot Pedal PTT

 **CODE:**  
**R5-PTT-FOOT**



- Robust foot operated PTT Button with long life switch.
- Suitable for vehicle or desk use.
- Non-slip pedal action.
- Plug and play with R5 ecosystem.

### R5 PTT Button Gearstick

 **CODE:**  
**R5-PTT-GEARSTICK**



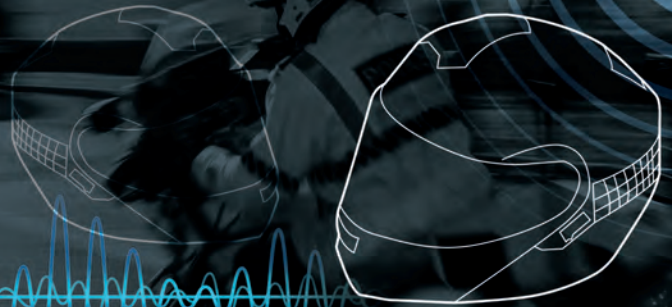
- Robust PTT Button with long life switch.
- Ergonomic design, mounts to shaft of gear stick.
- Plug and play with R5 ecosystem.





# HANDSFREE

# R5



## R5 HELMETS

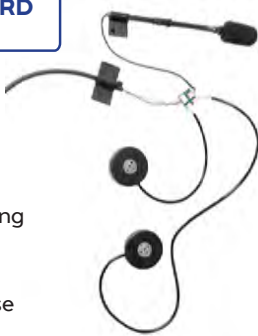
### R5 MOTORCYCLE HELMETS

#### R5 Motorcycle Headset – Wired



**CODE:**  
**R5-MC-HSET-WRD**

- Robust PTT Button with long life switch.
- Dual earpiece motorcycle helmet headset.
- Boom mic with noise cancelling microphone suitable for motorcycle use.
- Coiled cable with quick release Nexus connector.



#### Motorcycle Headset – Bluetooth



**CODE:**  
**R5-MC-HSET-BLTH**

- Bluetooth dual earpiece motorcycle helmet audio interface.
- Waterproof noise cancelling boom mic suitable for motorcycle use.
- Volume controls on helmet.
- Long battery life.



#### Shoei Neotec 2 Helmet Wired – Large



**CODE:**  
**R5-HLM-WIRED-L**

- Large Shoei Neotec 2 helmet with wired audio interface fitted.
- Dual earpiece headset.
- Boom mic with noise cancelling microphone suitable for motorcycle use.
- Coiled cable with quick release Nexus connector.

\* For all Helmet sizes see product listings at back of catalogue



#### Shoei Neotec 2 Helmet B/T – Large



**CODE:**  
**R5-HLM-BT-L**

- Large Shoei Neotec 2 helmet with Bluetooth audio interface fitted.
- Bluetooth dual earpiece.
- Waterproof noise cancelling boom mic suitable for motorcycle use.
- Volume controls on helmet.
- Long battery life.

\* For all Helmet sizes see product listings at back of catalogue





## R5 MOTORCYCLE

### R5 Motorcycle Remote (Volume / Channel)



**CODE:**  
**R5-MC-REM-V-C**

- Rugged IP67 handlebar mounted remote control.
- 4 programmable buttons suitable for motorcycle gloves.
- Default button setup: volume +/- & talkgroup +/-.
- Range of custom mounting brackets.
- Long life switches.

\* Remote bracket available  
see product listings at back  
of catalogue



### R5 Motorcycle PTT with Bracket



**CODE:**  
**R5-MC-PTT-BRK**

- Long life IP67 waterproof switch contact.
- Easy to use with motorcycle gloves.
- Supplied with bracket to attach to handlebars.



### R5 LTE/GPS/WiFi Motorcycle Antenna



**CODE:**  
**R5-ANT-MOTORCYCLE**

- High Performance ESN LTE & Wi-Fi Antenna
- MIMO Multi-Concentric Radiators
- 2xLTE + 2xBT/Dual-Band Wi-Fi + 1x GPS/GNSS
- 800/900/1800/1900/2100/2600\*1 + 2400/5400\*1
- <1.5:1 at Zf
- 1.2M 100 Type Dual-Screened\*2
- 2xSMA LTE, 2xFAKRA WiFi, 1xFAKRA GPS\*3 \*\* Cable set not included





# HANDSFREE R5

R5 FISTMICS

## R5 FIST MIC

### ML50 Fistmic



**CODE:**  
**R5-FIST**

- Rugged, solid design with excellent audio quality.
- Waterproof IP67 rating.
- Integrated microphone and speaker.
- PTT and emergency buttons.
- Local volume control toggle with high / low settings and LED indicator.
- Long spiral cable with anti garrot features.
- Headphone jack (3.5mm jack with thread).
- Easy to use and robust mounting system.



### Remote Speaker Microphone – Bluetooth Fismic



**CODE:**  
**R5-RSM-BT**

- Talk Group Selector with volume control.
- Large PTT Button.
- Emergency Key.
- 2x Un-Assigned Button Function.
- Superb receive audio quality.
- High quality microphone with immunity from GSM/TDMA noise.





**R5 DESK UNIT**

**R5 DESK UNIT**

 **CODE:**  
**R5-DU**

- Same functionality as the current R5 solutions.
- Nonslip rubber feet.
- Built in 10W speaker.
- External 240v mains power supply.
- Ethernet (RJ45).
- Plug and play with standard R5 audio accessories.
- 3.5mm audio out socket for wired headset.
- Foot PTT.



- USB compatibility.
- WIFI GPS & LTE connections.
- VESA mount pattern.

**R5 Desktop Microphone**

 **CODE:**  
**R5-MIC-DESK**

- Desk standing microphone with gooseneck.
- Easy to access durable PTT button.
- Highly directional dynamic microphone.
- Rugged metal housing.
- Plug and play over moulded connectors.





# HANDSFREE R5



## R5 REMOTE CONTROLS

### R5 REMOTE CONTROLS

#### R5 Wired Remote (Volume / Channel / PTT)



HANDSFREE

**CODE:**

**R5-REM-V-C-WIRED**

\* Product may change in appearance from that shown.



- Small lightweight ergonomic design.
- Wired to R5 system, no need to replace batteries.
- 7 programmable buttons (e.g. talk group, volume, ptt, emergency & tone).
- Long life switch contacts.

#### R5 Bluetooth Mouse



HANDSFREE

**CODE:**

**R5-MOUSE-BT**



- Bluetooth mouse compatible with the R5.
- 2 buttons and scroll wheel.
- Long battery life.

#### R5 Bluetooth Keyboard



HANDSFREE

**CODE:**

**R5-KEYBOARD-BT**



- Bluetooth keyboard compatible with R5.
- Small, light and reliable for in vehicle use.
- Long battery life.
- Configurable function buttons.



## R5 Pump Bay Voice Terminal – Standard



**CODE:**  
**R5-PBVT-SDT**

R5 Pump Bay Voice Terminal can be installed in the pump bay of a fire engine, providing an additional control point for Fire & Rescue teams. Rugged and simple to use with an intuitive interface. Robust and durable for extreme environmental conditions and rough handling. High acoustic quality. It seamlessly integrates into the system that comprises the complete R5 emergency services network solution.

- PBVT enables remote communication at key areas of the vehicle.
- Robust IP67 components in pump bay.
- Excellent audio quality via 25W speaker.
- Includes fist mic with PTT.
- Repeater speaker volume control and RTS button.
- Remote on/off switch in cab.
- Optional on/off integration with pump bay door opening.



## R5 PBVT Fist Mic



**CODE:**  
**R5-FIST**

- Rugged, solid design with excellent audio quality.
- Waterproof IP67 rating.
- Integrated microphone and speaker.
- PTT and emergency buttons.
- Local volume control toggle with high / low settings and LED indicator.
- Long spiral cable with anti garrot features.
- Headphone jack (3.5mm jack with thread).
- Easy to use and robust mounting system.



## R5 PBVT Loud Speaker



**CODE:**  
**R5-SPK-25W-IP**

- High power (25 Watt) horn speaker with low distortion.
- Rugged, flame resistant, waterproof IP66 housing.
- Very compact design.
- Salt fog resistant (IEC 60068; VW 80101).
- Frequency range optimised for radio communication.





## R5 BRACKETS & MOUNTS

### Mounting Kit (Zirkona AMPS/AMPS)


**CODE:**  
**R5-UIM-ZK-FIXED-M-01**

Fixed Zirkona mounting solution for the R5 UI Panel allowing the user to mount to a flat surface.

- Fixed mounting solution for R5 UI Panels.
- AMPS pattern mounting plate.
- Rugged, holds up to 2.8Kg.



### Mounting Kit (Zirkona Angled AMPS)


**CODE:**  
**R5-UIM-ZK-FIXED-ANGLED**

- Adjustable angle mounting solution for R5 UI Panels.
- Allows effortless rotation of UI panels.
- AMPS pattern mounting plate.
- Rugged, holds up to 2.8Kg.





**R5 BRACKETS & MOUNTS**

**R5 User Interface Surface Hinge Mount (AMPS)**

 **CODE:**  
**R5-UIM-GJ-SURFACE-HINGE**

A mounting solution allowing the R5 UI Panel to be mounted flat onto a surface with small angle adjustment.

- Securely mounts R5 UI Panel on a flat surface.
- Allows small up/down angle adjustment.



**R5 User Interface Magnetic Mount**

 **CODE:**  
**R5-UIM-GJ-MA**

Magnetic mounting solution for the R5 UI Panel allowing the user to remove the UI Panel and hold. Suitable for discreetly mounting UI Panel in a glove box.

- Demountable solution for R5 UI Panels.
- Strong magnet holds UI secure.
- Allows user to hold wired UI Panel for use then return to mount when driving.
- Suitable for discreet glove box use.



# HANDSFREE R5

R5 ANTENNAS

PANORAMA  ANTENNAS

## LTE/GPS/WiFi Batwing Antenna 3m



**CODE:**

**R5-ANT-BAT-3M-P**



- Covert/Discrete internal antenna
- Up to 5-in-1 solution
- MiMo LTE product with distinctive BAT design
- 4G/5G LTE MiMo covering 617-6000MHz
- SiSo or 2x2 MiMo WiFi
- Active GPS/GNSS with advanced B13/14 filtering
- For mounting on or under any conductive surface
- Provides robust in-vehicle connectivity
- Discreet covert antenna

\* Cables included

## LTE/GPS/WiFi Great White Antenna 5m



**CODE:**

**R5-ANT-DOME-5M-P-B**  
**R5-ANT-DOME-5M-P**



- Designed for latest generation LTE Cat 18/20 routers and devices.
- Low profile antenna with up to 11 functions in 1
- 4x4 MiMo 4G/G LTE cellular, Optional GPS/ GNSS & optional MiMo 2.4/7.2GHz in one housing.
- Kits with extension cables available for a range of LTE routers.
- Available in Black & White.

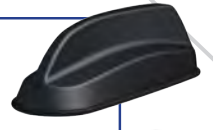
\* Cables included. 3m option available

## LTE/GPS/WiFi Sharkfin Antenna 5m



**CODE:**

**R5-ANT-SRK-5M-P-B**  
**R5-ANT-SRK-5M-P**



- Up to 5x 2.4/5.0GHz elements.
- Vehicle Routers & Gateways.
- Multimedia & Telematic Solutions.
- Vehicle-to-Everything (V2X) Communications.
- Up to 4x4 MiMo Compact Antenna Solution.
- External mount, SharkFin Automotive OEM styling.
- Available in Black & White.
- WiFi 6 Ready functioning up to 7.1GHz.
- Optional GPS/GNSS element with 26dB gain.

\* Cables included. 3m option available



**SureAntennas**

**LTE/GPS/WiFi Sandcastle Antenna 5m**

**SureAntennas** | **CODE:**  
**R5-ANT-SC-B**  
**R5-ANT-SC-W**

- Wideband LTE 2G 3G 4G Elements.
- Up to 11 functions in one antenna.
- Ultra Wide Bandwidth 700MHz – 6000Mhz.
- Optional MiMo Dual Band WiFi/WiMAX.
- Low Profile.
- Simple single hole installation.

\* Cables included. 3m option available



**SureAntennas**

**R5 LTE/GPS/WiFi Mallard Antenna 5m**

**SureAntennas** | **CODE:**  
**R5-ANT-MAL-B-S**  
**R5-ANT-MAL-W-S**

- Wideband LTE 2G 3G 4G elements.
- Ultra Wide bandwidth 700MHz – 6000Mhz.
- Low profile OEM styled sharkfin.
- Simple single hole installation.

\* Cables included. 3m option available





# R5 FIELD SERVICES

All Services completed by a NPPV 3 cleared FITAS Approved technician who has attended a R5 Fixed Vehicle Device Training Course.

## Pre-Installation Survey



**CODE:**  
**R5-SURVEY**

- Completed by experienced Vehicle Installation Engineer/Manager.
- Visit to assess the proposed equipment location and wiring route.
- Vehicle Assessed with the Fleet Manager/UO Representative.
- Survey document created and issued to the UO for approval.
- Stored on Handsfree secure Document Management System.



\* Based on specific vehicle "type"

## Design Engineer (per day)



**CODE:**  
**R5-DESIGN-DAYS**

- Can include decommissioning guidance.
- Support with choice of ESN antenna solution.
- Completed by experienced Vehicle Installation Engineer/Manager.
- Used in conjunction with vehicle survey.
- Completed in conjunction with 1st vehicle installation has taken place.
- Design drawn up by experienced Technical Author.
- Vehicle Design created and issued to the UO for approval.
- Stored on Handsfree secure Document Management System.



\* Based on specific vehicle "type"

## Installation - Standard / Fire Appliance / Specialist Vehicle



**CODE:**  
**R5-INSTALL-STD**  
**R5-INSTALL-FIRE**

- Installations completed by Security cleared/FITAS approved technicians.
- Installations will be completed in accordance with designs created.
- Decommissioning of Airwave equipment optional.
- Supported by experienced planning and logistics team.
- Installation of R5 Fixed Vehicle Device, wiring and associated accessories.
- Installation of ESN Antenna.
- Commissioning of complete solution.



## Tech Support (per vehicle, per day)



**CODE:**  
**SPP-TECH**

- On-site support completed by Security cleared/FITAS approved technicians.
- 24/7 Next Day or 6 hr Response time.
- Supported by experienced planning and logistics team.
- Asset management included.
- Software upgrades optional.



# R5 FIELD SERVICES

All Services completed by a NPPV 3 cleared FITAS Approved technician who has attended a R5 Fixed Vehicle Device Training Course.

## De-Install (Per Vehicle)



**CODE:**  
**R5-DE-INSTALL**



- De-Installations completed by Security cleared/FITAS approved technicians.
- Decommissioning of Airwave equipment optional.
- Supported by experienced planning and logistics team.
- De-Installations of R5 Fixed Vehicle Device, wiring and associated accessories.
- Secure disposal of decommissioned equipment if required.
- Disposal/recycling of equipment within WEEE guidelines.

## Vehicle Audit



**CODE:**  
**R5-AUDIT**



- Installation Audit completed by experienced Vehicle Installation Engineer/Manager.
- Self-Audit supported by Mobile Application.
- Desktop Audit completed on random selection of installations.
- Physical audit completed.
- At User Organisation request.
- At random installation interval.
- For every project undertaken.
- Yearly by FITAS.

## R5 Warranty Services (Warranties only apply to Base Kits as defined in the Catalogue)

WARRANTY	YEARS	START/END	PRICE
<b>Standard</b>	<b>3</b>	Standard warranty will start on receipt of goods.  If repaired/replaced the warranty of the device or accessory will continue to apply until the end of the current standard warranty expiry date, or 90 days following repair or replacement which ever is the longer amount of time.	<b>Included</b>
<b>Extended</b>	<b>2</b>	The Extended Warranty will start on the day that the Standard Warranty has ended. The warranty of the device or accessory will continue to apply until the end of extended warranty expiry date, or 90 days following repair or replacement whichever is the longer .	<b>Chargeable*</b>
<b>Extended</b>	<b>2</b>	<b>As above (Extended 2 years)</b>  The Extended Warranty will start on the day that the Standard Warranty has ended.	<b>Chargeable*</b>

**Important Notice** - All other products (Accessories) are to have a standard 12-month warranty. This cannot be extended.

\* Price on Application

## Additional Products & Services

PRODUCT CODE	DESCRIPTION	TYPE
<b>Antennas</b>		
R5-ANT-MAL-B-S	R5 LTE/GPS/WiFi Black "Mallard" Antenna (Sure)	Antenna
R5-ANT-DOME-3M-P-B	R5 LTE/GPS/WiFi Black "Great White" Antenna (Panorama) 3m	Antenna
R5-ANT-DOME-5M-P-B	R5 LTE/GPS/WiFi Black "Great White" Antenna (Panorama) 5m	Antenna
R5-ANT-BAT-3M-P	R5 LTE/GPS/WiFi Black "Batwing" Antenna (Panorama) 3m	Antenna
R5-ANT-DOME-3M-P-W	R5 LTE/GPS/WiFi White "Great White" Antenna (Panorama) 3m	Antenna
R5-ANT-DOME-5M-P-W	R5 LTE/GPS/WiFi White "Great White" Antenna (Panorama) 5m	Antenna
R5-ANT-SRK-3M-P-W	R5 LTE/GPS/WiFi White "Sharkfin" Antenna (Panorama) 3m	Antenna
R5-ANT-SRK-5M-P-W	R5 LTE/GPS/WiFi White "Sharkfin" Antenna (Panorama) 5m	Antenna
R5-ANT-SRK-5M-P-B	R5 LTE/GPS/WiFi Black "Sharkfin" Antenna (Panorama) 5m	Antenna
R5-ANT-COAX-EXT-5M	R5 Coaxial Extension Cables Pack (Sure) 5m	Antenna
R5-ANT-MAL-B-S-3M	R5 LTE/GPS/WiFi Black "Mallard" Antenna (Sure) 3m	Antenna
R5-ANT-MAL-W-S-3M	R5 LTE/GPS/WiFi White "Mallard" Antenna (Sure) 3m	Antenna
R5-ANT-MAL-B-S-5M	R5 LTE/GPS/WiFi Black "Mallard" Antenna (Sure) 5m	Antenna
R5-ANT-MAL-W-S-5M	R5 LTE/GPS/WiFi White "Mallard" Antenna (Sure) 5m	Antenna
R5-ANT-SC-B-3M	R5 LTE/GPS/WiFi Black "Sandcastle" Antenna (Sure) 3m	Antenna
R5-ANT-SC-W-3M	R5 LTE/GPS/WiFi White "Sandcastle" Antenna (Sure) 3m	Antenna
R5-ANT-SC-B-5M	R5 LTE/GPS/WiFi Black "Sandcastle" Antenna (Sure) 5m	Antenna
R5-ANT-SC-W-5M	R5 LTE/GPS/WiFi White "Sandcastle" Antenna (Sure) 5m	Antenna
R5-ANT-COAX-EXT-3M	R5 Coaxial Extension Cables Pack (Sure) 3m	Antenna
R5-ANT-SRK-3M-P-B	R5 LTE/GPS/WiFi Black "Sharkfin" Antenna (Panorama) 3m	Antenna
R5-ANT-MAL-W-S	R5 LTE/GPS/WiFi White "Mallard" Antenna (Sure)	Antenna
<b>D2D Integration Cables</b>		
R5-D2D-AI-AIRBUS	D2D Audio Integration Airbus	Cables
R5-D2D-AI-M-5500	D2D Audio Integration Motorola - 5500	Cables
R5-D2D-AI-M-800E	D2D Audio Integration Motorola - 800e	Cables
R5-D2D-AI-SRG3900	D2D Audio Integration Sepura	Cables
R5-CU-A-1M	R5 Core Unit to Audio Cable 1m	Cables
R5-CU-UI-0.4M	R5 Core Unit to User Interface Cable 40cm	Cables
R5-USBA-USBA-3M	USB-A to USB-A Cable 3m	Cables
R5-CU-UI-6M	R5 Core Unit to User Interface Cable 6m	Cables
R5-HSET-PTT-KP-DISP-INT	R5 Handset with Display Integration Loom (HA4x, HA57)	Cables

## Additional Products & Services

PRODUCT CODE	DESCRIPTION	TYPE
<b>R5 Cables</b>		
R5-CU-A-5M	R5 Core Unit to Audio Cable 5m	Cables
R5-CU-IO-5M	R5 Core Unit to IO Cable 5m	Cables
R5-CU-PWR	R5 CU Power Harness	Cables
R5-CU-UI-5M	R5 Core Unit to User Interface Cable 5m	Cables
R5-CU-A-3M	R5 Core Unit to Audio Cable 3m	Cables
R5-CU-UI-2M	R5 Core Unit to User Interface Cable 2m	Cables
R5-CU-UI-3M	R5 Core Unit to User Interface Cable 3m	Cables
R5-CU-MOSINT	R5 MOS Kit Integration Cable	Cables
R5-USBA-USBA-1M	USB-A to USB-A Cable 1m	Cables
<b>Consumables</b>		
R5-C-INSTALLKIT	R5 Installation Kit	Consumables
R5-C-CU-SST	R5 Security Screws for Core Unit (size 8 x 1inch Stainless, Self tapping) Qty 4	Consumables
R5-C-CU-SBOLT	R5 Security Bolts (M4 x 20mm Stainless) Qty 4	Consumables
R5-C-CU-NUT	R5 Nut (M4) Qty 4	Consumables
R5-C-UI-FX	R5 UI Fixings (M4x8mm C/S Pozzi Head Security Screw) Qty 4	Consumables
<b>Pump Bay Terminal</b>		
R5-PBVT-CABLE-20M	R5 Pump Bay Voice Terminal Cable - 12 core (20m)	PBVT
R5-PBVT-SDT	R5 Pump Bay Voice Terminal - Standard	PBVT
R5-PBVT-PREM	R5 Pump Bay Voice Terminal - Premium	PBVT
R5-PBVT-SIKIT	R5 Sonic PBVT Integration Kit	PBVT
<b>Bench Test</b>		
R5-BENCH-KIT	R5 Bench Test / Development Kit	Bench Test
R5-CU-PWR-ADP	R5 Core Unit Bench Test Power Harness, with Ignition switch	Bench Test
R5-UIM-DESK-STAND	R5 Circular UI Desk Stand	Bench Test
R5-CASE-MAX	R5 Tough Case - IP67 - MAX 620x460x340mm	Bench Test
R5-BENCH-KIT-BUNDLE	R5 Bench Test / Development Kit - Bundle	Bench Test
<b>Brackets</b>		
R5-UIM-DIN-OFFSET	R5 User Interface Offset DIN Mount (AMPS)	Brackets
R5-UIM-VD-RT1250-COWL	R5 User Interface Cowl BMW RT1250 Motorcycle	Brackets
R5-UIM-GJ-DIN	R5 User Interface DIN Mount (AMPS)	Brackets

## Additional Products & Services

PRODUCT CODE	DESCRIPTION	TYPE
<b>Desk Unit</b>		
R5-BENCH-KIT	R5 Bench Test / Development Kit	Desk Unit
R5-CU-PWR-ADP	R5 Core Unit Bench Test Power Harness, with Ignition switch	Desk Unit
R5-UIIM-DESK-STAND	R5 Circular UI Desk Stand	Desk Unit
R5-CASE-MAX	R5 Tough Case - IP67 - MAX 620x460x340mm	Desk Unit
R5-DU-HDMI	R5 Desk Unit with HDMI	Desk Unit
<b>Field Services</b>		
R5-WRK-HP	Working at Height Platform	Field Services
R5-SERVICECALL	R5 Service Call (per hour)	Field Services
R5-INSTALL-STD	Installation - Standard	Field Service
<b>Professional Services</b>		
R5-TRAVEL	Travel & Expenses (per day)	Professional Services
R5-SPECDOC	Installation Specification Document	Professional Services
R5-PROJECT-DAYS	Project Management (per day)	Professional Services
R5-DEV-DAYS	Development (per day)	Professional Services
R5-TEST-DAYS	Test Services (per day)	Professional Services
R5-TAA	Test Automation Architect (per day)	Professional Services
R5-SAS	Software Automation Specialist (per day)	Professional Services
R5-DEV-DEVICE	Device Development (per day)	Professional Services
R5-DEV-SOFTWARE	Software Development (per day)	Professional Services
R5-DEV-HARDWARE	Hardware Development (per day)	Professional Services
R5-OS-CUSTOM	Operating System Customisation (per day)	Professional Services
<b>Service Support</b>		
R5-STORAGE	Storage with Insurance (per month)	Service Support
R5-SERVICE-MONTH-36	R5 Service Offering (monthly - 36 month contract)	Service Support
R5-SERVICE-MONTH-12	R5 Service Offering (monthly - 12 month contract)	Service Support
R5-SERVICE-MONTH-24	R5 Service Offering (monthly - 24 month contract)	Service Support
R5-SERVICE-MONTH-48	R5 Service Offering (monthly - 48 month contract)	Service Support
R5-SERVICE-247	24/7 Service Desk Contact	Service Support
R5-NW-REPAIR	Non-Warranty / Out of Warranty Repairs	Service Support
R5-SERVICE-TRANSLATION-W*	Welsh Documentation Translation	Service Support
R5-COLLECTION-48	Non Warranty (Collection within 48 hours of request)	Service Support

\* Price on Application

## Additional Products & Services

PRODUCT CODE	DESCRIPTION	TYPE
R5-COLLECTION-3TO5	Non Warranty (Collection within 3 to 5 business days)	Service Support
R5-SERVICE-SPARESHOLDING*	3 month, 6 month, 12 Month	Service Support
<b>Remote Control</b>		
R5-STYLUS-ACTIVE	Stylus Pen – Active	Remote Control
R5-STYLUS-PASSIVE	Stylus Pen – Passive	Remote Control
R5-MOUSE-WIRED	USB Mouse	Remote Control
R5-KEYBOARD-WIRED	USB Keyboard	Remote Control
R5-RSM-BT	Remote Speaker Microphone – Bluetooth – Sonic	Remote Control
<b>Motorcycles</b>		
RR5-MC-HSET-WRD	Motorcycle Headset – Wired	Motorcycle
R5-MC-HSET-BLTH	Motorcycle Headset – Bluetooth	Motorcycle
R5-HLM-BT-L	Shoei Neotec 2 Helmet with Bluetooth Headset – Large	Motorcycle
R5-HLM-WIRED-L	Shoei Neotec 2 Helmet with Wired Headset – Large	Motorcycle
R5-MC-AUDIO-INT	R5 Wired Helmet Interface (Nexus Connector)	Motorcycle
R5-MC-PTT-BRK	R5 Motorcycle PTT with Bracket	Motorcycle
R5-HLM-BT-M	Shoei Neotec 2 Helmet with Bluetooth Headset – Medium	Motorcycle
R5-HLM-WIRED-M	Shoei Neotec 2 Helmet with Wired Headset – Medium	Motorcycle
R5-HLM-BT-S	Shoei Neotec 2 Helmet with Bluetooth Headset – Small	Motorcycle
R5-HLM-WIRED-S	Shoei Neotec 2 Helmet with Wired Headset – Small	Motorcycle
<b>Tools</b>		
R5-SCREWDRIVER-T5H	Security Screwdriver – T5H	Tools
<b>Other</b>		
R5-UI-ANTI GLARE	User Interface Anti Reflection Filter / Screen protector	Other
R5-HEADSET-WIRED	Headset with mic – Wire	Other
R5-HEADSET-BT	Headset with mic – Bluetooth	Other
R5-RAPID	Portable Rapid Deployment Unit (Rechargeable Battery/Rugged)	Other
<b>Speakers</b>		
R5-SPK-10W-IP67SW	R5 Speaker 10W – IP67 Saltwater	Speaker

\* Price on Application

# HANDSFREE R5

## Vehicle Integration service support and ongoing maintenance



- UK wide coverage – our engineers come to you
- Comprehensive end to end solutions of quality installation and aftercare
- Survey, Design & Documentation
- Fully managed service capability enabling trouble free transition
- Locally based FITAS accredited, skilled technical engineers
- Fully qualified installer of the latest technology solutions

To find out more about R5 installations please call 0161 864 6440 or email [sales@handsfree.co.uk](mailto:sales@handsfree.co.uk)



HANDSFREE

R5

**UK Head Office**

6 Lumsdale Road, Cobra Court, Trafford Park, Manchester M32 0UT  
T: 0161 864 6440    E: [info@handsfree.co.uk](mailto:info@handsfree.co.uk)    W: [handsfreer5.com](http://handsfreer5.com)