

EMERGENCY MARINE VESSEL



HANDSFREE

R5

MCX LTE
Fixed Vehicle Device.



R5 BASE KIT

R5 5.7" User Interface Panel

- 5.7 inch multi touch screen usable with clinical gloves.
- Bright sunlight readable display.
- Dedicated buttons for PTT, emergency, volume, etc.
- Programmable hot keys usable with heavy gloves, eg. Lights, Siren, Talk Group Select, Status Messages, D2D, ANPR, etc.
- 1.8mm Gorilla glass; rugged, built for harsh environments.
- IP67 for use inside or outside of vehicle.
- Versatile AMPS mounting.



R5 Control Unit

- ESN PTT
- Android 10 with GMS certification, LTE, Wifi & GNSS.
- ESN MCPTT and standard voice calling.
- Support for 1 or 2 UI panels.
- In vehicle data hotspot (wired or Wifi).
- Four flexible wired plus Bluetooth audio interfaces.
- Device to Device voice via optional retained TETRA radio.
- Versatile IO: CAN, RS232, Ethernet, USB3.0, USB 2.0, digital IO



R5 Surface Mount Microphone

- Directional microphone with noise cancelling.
- Small discrete design.
- 3m cable with over moulded connector.



R5 10 W Speaker

- High power 10W speaker.
- Rugged and robust for in vehicle use.
- Versatile metal mounting bracket.



R5 PTT Button

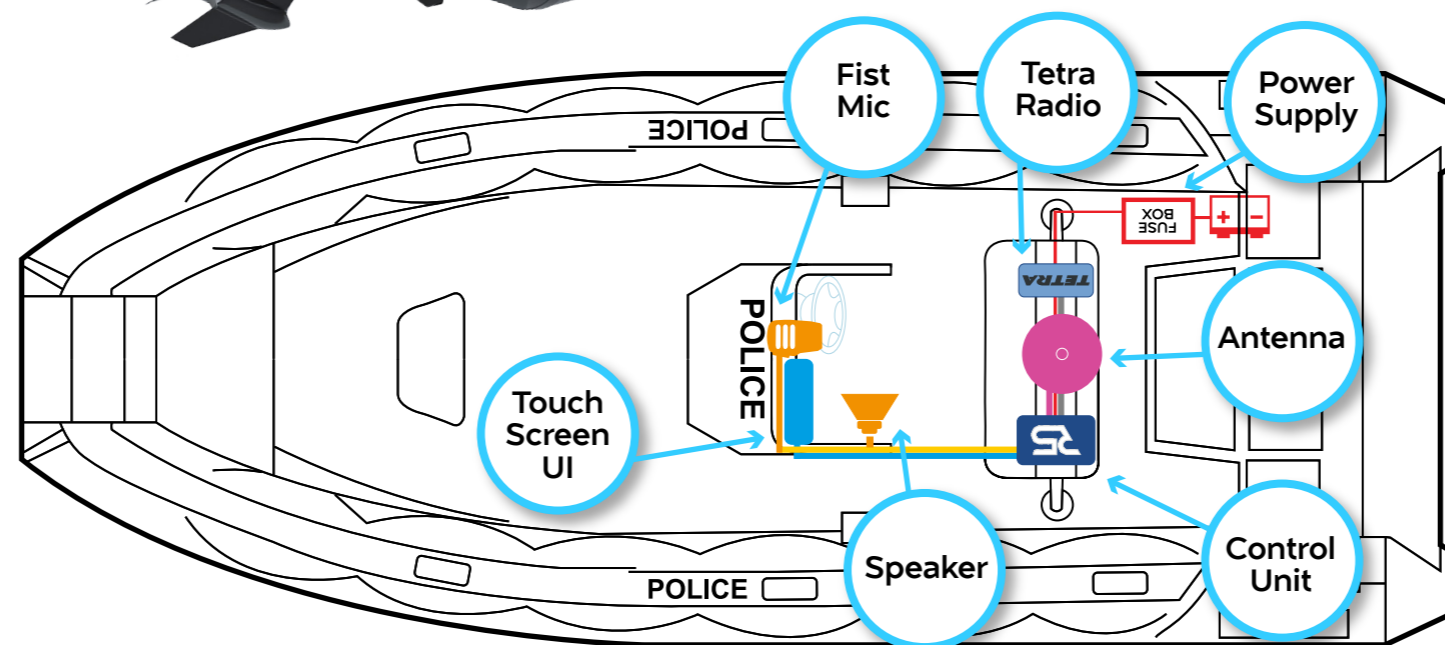
- Robust basic PTT Button with long life switch.
- Capable of discreet installation.
- Plug and play with R5 ecosystem.



R5 REQUIRED

R5 UI Bracket & Mount

- Rugged plastic housing
- Rugged and versatile mounting for both sizes of UI panel.
- Easy rotation of UI.
- Holds up to 2.8Kg.
- Modular system with variety of joiners allows adjustment of height.



R5 ACCESSORIES

R5 Fist Mic

- Electret microphone
- Rugged design with excellent audio quality.
- PTT and emergency buttons.
- Long spiral cable with anti garrot features.
- Local volume control.



R5 PTT Rugged Screen Handset

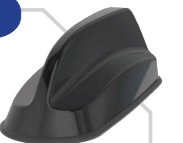
- Well proven design
- Large voltage range (5 V to 35 V)
- 2.4" colour graphic display
- Adjustment of display brightness
- Full numeric keypad
- PTT button on the side
- Emergency Button Facility
- Dynamic ear capsule
- Electret microphone capsule with noise reduction
- Wear-free hook function



R5 REQUIRED

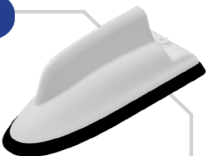
Panorama LTE/GPS/WiFi Antenna

- Wideband LTE antenna designed for ESN use.
- 2x LTE, 2x Wifi, 1x GNSS
- Sleek sharkfin housing.
- 3m or 5m cable options.



Sure LTE/GPS/WiFi Antenna

- Wideband LTE antenna designed for ESN use.
- 2x LTE, 2x Wifi, 1x GNSS, optional TETRA.
- Low profile OEM style design.
- 3m or 5m cable options.



HANDSFREE R5
Mission Critical Communication
VOICE • PTT • DATA
Book our Demo Vehicle Now!
 goto handsfreer5.com and register for a Demo Vehicle or a Fleet Survey