

RESCUE PUMP FIRE APPLIANCE



HANDSFREE

RS

MCX LTE
Fixed Vehicle Device.



R5 BASE KIT

R5 5.7" User Interface Panel

- 5.7 inch multi touch screen usable with clinical gloves.
- Bright sunlight readable display.
- Dedicated buttons for PTT, emergency, volume, etc.
- Programmable hot keys usable with heavy gloves, eg. Lights, Siren, Talk Group Select, Status Messages, D2D, ANPR, etc.
- 1.8mm Gorilla glass; rugged, built for harsh environments.
- IP67 for use inside or outside of vehicle.
- Versatile AMPS mounting.



7" UI Optional Upgrade

- Optional upgrade
- 7 inch multi touch screen usable with clinical gloves.



R5 Control Unit

- ESN PTT
- Android 10 with GMS certification, LTE, Wifi & GNSS.
- ESN MCPTT and standard voice calling.
- Support for 1 or 2 UI panels.
- In vehicle data hotspot (wired or Wifi).
- Four flexible wired plus Bluetooth audio interfaces.
- Device to Device voice via optional retained TETRA radio.
- Versatile IO: CAN, RS232, Ethernet, USB3.0, USB 2.0, digital IO



R5 Surface Mount Microphone

- Directional microphone with noise cancelling.
- Small discrete design.
- 3m cable with over moulded connector.



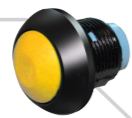
R5 10 W Speaker

- High power 10W speaker.
- Rugged and robust for in vehicle use.
- Versatile metal mounting bracket.



R5 PTT Button

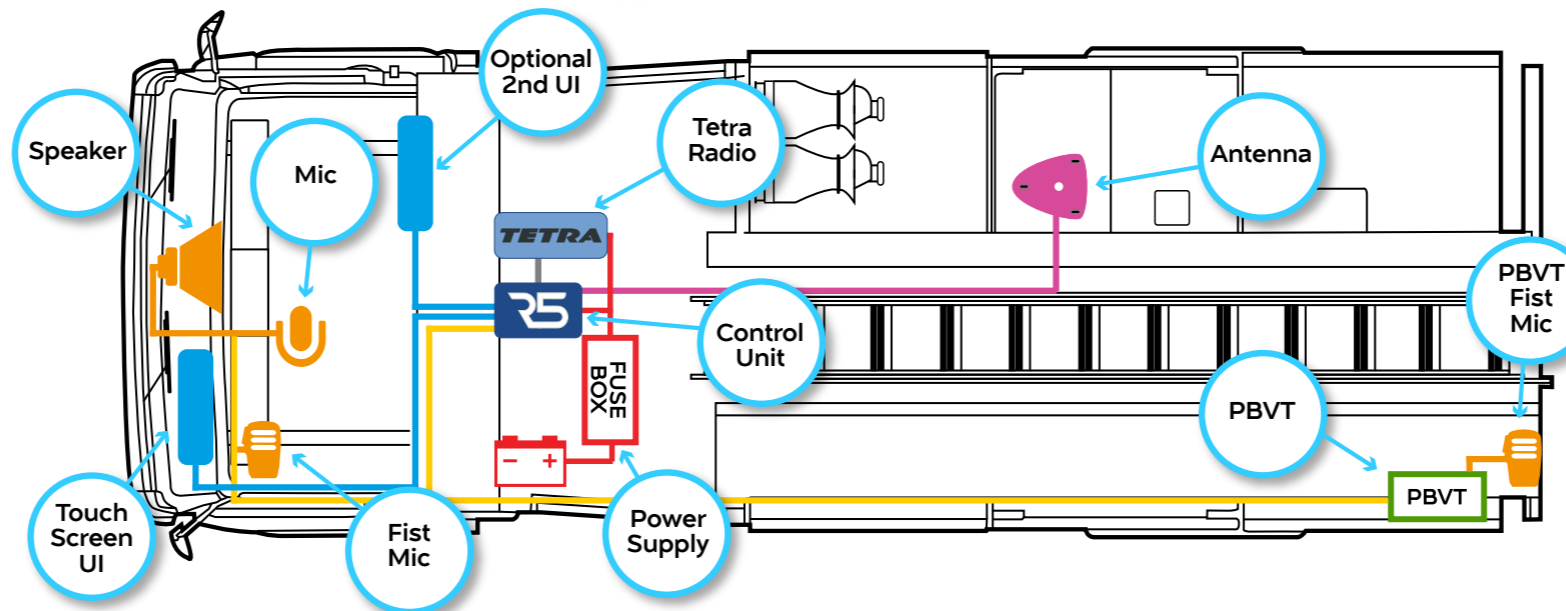
- Robust basic PTT Button with long life switch.
- Capable of discreet installation.
- Plug and play with R5 ecosystem.



R5 REQUIRED

R5 UI Bracket & Mount

- Rugged plastic housing
- Rugged and versatile mounting for both sizes of UI panel.
- Easy rotation of UI.
- Holds up to 2.8Kg.
- Modular system with variety of joiners allows adjustment of height.



R5 ACCESSORIES

R5 Pump Bay Terminal

- IP67 access point for MCPTT communications in pump bay.
- IP67 Enclosure with volume control and illuminated RTS button.
- 20W IP67 speaker.
- IP67 Fisticmic with PTT and emergency buttons.
- In cab On / Off control.
- Optional On / Off control from pump bay door switch.
- High quality audio cabling for use up to 20m from R5
- Durable cabling designed for use on exposed vehicle chassis areas.
- Integrates with existing systems.



R5 PBVT Loud Speaker

- Rugged flame-resistant plastic housing
- High sound output



R5 PBVT Fist Mic

- Electret microphone
- Rugged design with excellent audio quality.
- PTT and emergency buttons.



2nd 7" User Interface Panel

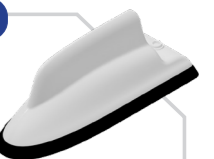
- 7" Touch Screen
- Programmable Hot Keys, Siren, & Lighting Control, Talk Group Select, Operational Status, Messages
- Rugged, built for harsh environments.



R5 REQUIRED

Sure LTE/GPS/WiFi Antenna

- Wideband LTE antenna designed for ESN use.
- 2x LTE, 2x Wifi, 1x GNSS, optional TETRA.
- Low profile OEM style design.
- 3m or 5m cable options.



HANDSFREE R5

Mission Critical Communication

VOICE • PTT • DATA

Book our Demo Vehicle Now!

goto handsfreer5.com and register for a Demo Vehicle or a Fleet Survey

HANDSFREE R5

Vehicle Integration service support and ongoing maintenance



- UK wide coverage – our engineers come to you
- Comprehensive end to end solutions of quality installation and aftercare
- Survey, Design & Documentation
- Fully managed service capability enabling trouble free transition
- Locally based FITAS accredited, skilled technical engineers
- Fully qualified installer of the latest technology solutions

To find out more about R5 installations please call 0161 864 6440 or email infor5@handsfree.co.uk