



# LIGHTING





BrightStar New Products.....2  
 BrightStar Hand Search Lights.....3  
 BrightStar Head Torches.....4  
 BrightStar Torches.....5



Eflare Beacons.....12  
 Eflare Accessories.....13



TradeTuff Lights.....19  
 TradeTuff Accessories.....20  
 JCB Lights.....21



Other Lighting.....25  
 Specialist Demarcation Lights & Signs.....27  
 Industrial Beacon.....29



LedLenser Hand Torches.....7  
 LedLenser Hand Held Lighting.....8  
 LedLenser Head Torches.....9  
 LedLenser Area Lights.....10



SCANGRIP CONNECT Area Lights.....15  
 SCANGRIP Area Lights.....16  
 SCANGRIP Lights & Accessories.....17



Peli Lights.....24



***Koehler* BrightStar™**





This palm-sized, lightweight, personal safety beacon can be programmed to a steady flash mode, random flashing mode or steady mode and seen from over 1000 feet away.

## THE FREAKIN' BEACON

The Freakin' Beacon comes in multiple colors and runs for up to 400 hours.

- Green: 36 hours on steady and 144 hours on flash
- Blue: 48 hours on steady and 192 hours on flash
- Red, white & amber: 65 hours on steady and 200 hours on flash

The Freakin' Beacon is a Class I, Division 1 light with an IP67 rating.

<b>BATTERY</b>	2 x AAA alkaline batteries
<b>BATTERY LIFE</b>	Up to 200 hours
<b>COLOURS</b>	Red, White, Amber, Green, Blue
<b>BEAM DISTANCE</b>	305m
<b>WEIGHT</b>	96g

## BFL AREA LIGHT

<b>CAT NO</b>	<b>BS-89000</b>
<b>BATTERY</b>	Rechargeable Lithium-Ion Battery
<b>BATTERY LIFE</b>	Up to 56 hours
<b>LUMENS</b>	3000 High / 225 Low
<b>BEAM DISTANCE</b>	210m
<b>WEIGHT</b>	1.59kg



The Razor torches are lightweight, fully waterproof and durable to withstand most abusive environments. They come with ATEX approvals and are intrinsically safe.



Downlight feature

## RAZOR FSL

<b>CAT NO</b>	<b>BS-60170</b>
<b>BATTERY</b>	(3) AA batteries
<b>BATTERY LIFE</b>	Up to 24 hours
<b>LUMENS</b>	Up to 325 lumens
<b>BEAM DISTANCE</b>	Up to 236m
<b>WEIGHT</b>	226g



## NEW RAZOR

<b>CAT NO</b>	<b>BS-60160</b>
<b>BATTERY</b>	(3) AA batteries
<b>BATTERY LIFE</b>	Up to 24 hours
<b>LUMENS</b>	325 lumens
<b>BEAM DISTANCE</b>	236m
<b>WEIGHT</b>	226g



## RAZOR 2

<b>CAT NO</b>	<b>BS-60108</b>
<b>BATTERY</b>	(3) AA batteries
<b>BATTERY LIFE</b>	Up to 7 hours
<b>LUMENS</b>	325 lumens
<b>BEAM DISTANCE</b>	237m
<b>WEIGHT</b>	198g



The Lighthawk LED lanterns are fully waterproof to 1m for 24 hours, have articulating heads along with multiple functions such as low battery indicator, LED charge status indicator & flashing LED tail lights. They also have the advantage of being wall and vehicle mountable.

## BrightStar Hand Search Lights

Used in UK NHS Ambulance Trusts, Fire and Rescue Services and the RNLI.



LED LIGHTHAWK GEN II (INTRINSICALLY SAFE)

<b>CAT NO</b>	<b>BS-07632-YELLOW</b>
<b>BATTERY</b>	Rechargeable Lithium-Ion Battery
<b>BATTERY LIFE</b>	Up to 14 hours
<b>LUMENS</b>	300 lumens
<b>BEAM DISTANCE</b>	447m
<b>WEIGHT</b>	860g



LIGHTHAWK VISION 600

<b>CAT NO</b>	<b>BS-07732-VISION</b>
<b>BATTERY</b>	Rechargeable Lithium-Ion Battery
<b>BATTERY LIFE</b>	Up to 6.25 hours
<b>LUMENS</b>	600 lumens
<b>BEAM DISTANCE</b>	250m
<b>WEIGHT</b>	860g

**BS-9B-1962-1**

Lighthawk Battery, 4-Cell for Lighthawk GEN II & Vision

**BS-9B-1963-2**

Lighthawk Battery, 6-Cell for Lighthawk GEN II & Vision

**BS-07690**

Lighthawk Charger Base for Lighthawk GEN II

**BS-20627**

Lighthawk 240v Charger Lead with UK Plug

**BS-07870**

Lighthawk 12v Charger Lead

**BS-21132**

Shoulder Strap for Lighthawk

Intrinsically Safe  
Waterproof  
Oversized On/Off Switch for gloved hands



RIGHT ANGLE LIGHTS

<b>CAT NO</b>	<b>BS-510221</b>	<b>BS-510304</b>
<b>MODEL</b>	RIGHT ANGLE LED RECHARGEABLE	RIGHT ANGLE LED NON-RECHARGEABLE
<b>BATTERY</b>	Rechargeable Lithium-Ion Battery	(6) AA batteries
<b>BATTERY LIFE</b>	Up to 4 hours	Up to 17 hours
<b>LUMENS</b>	205 lumens	220 lumens
<b>BEAM DISTANCE</b>	477m	490m
<b>WEIGHT</b>	450g	454g



## VISION LED HEADLAMP (INTRINSICALLY SAFE)



Get the illumination you need! High, low, spot or flood – while your hands are free to work. A great, affordable, all-around headlamp for all kinds of environments. Wear it with or without a hardhat or under a visor.

<b>CAT NO</b>	<b>BS-200501</b>
<b>BATTERY</b>	(3) AAA batteries
<b>BATTERY LIFE</b>	Up to 20 hours
<b>LUMENS</b>	185 lumens
<b>BEAM DISTANCE</b>	65m
<b>WEIGHT</b>	90g

## VISION LED HEADLAMP RECHARGEABLE (INTRINSICALLY SAFE)

The best in class headlamp for optimal vision is now rechargeable.

<b>CAT NO</b>	<b>BS-200521</b>
<b>BATTERY</b>	Rechargeable Lithium-Ion Battery
<b>BATTERY LIFE</b>	Up to 100 hours
<b>LUMENS</b>	185 lumens
<b>BEAM DISTANCE</b>	63m
<b>WEIGHT</b>	99g



## VISION FLOOD

Lightweight & bright, this flood headlamp can operate with or without touching a button.

<b>CAT NO</b>	<b>BS-200511</b>
<b>BATTERY</b>	2 x AAA alkaline batteries
<b>BATTERY LIFE</b>	Up to 13 hours
<b>LUMENS</b>	125 lumens
<b>WEIGHT</b>	85g

## INTRINSICALLY SAFE:

The intrinsically safe certification on these lights gives you the absolute confidence to use the lights in the most hazardous environments without concern of any safety issues.



BS-16460



BS-09050

## WORKSAFE LED ATEX, ZONE 0

CAT NO	LIGHT OUTPUT	DISTANCE	BATTERY TYPE	RUN TIME	WATERPROOF	WEIGHT
<b>BS-16460</b>	80 lumens	100m	(2) D cell batteries	Up to 200 hours	Yes	130g
<b>BS-09050</b>	90 lumens	165m	(4) D cell batteries	Up to 150 hours	Yes	2.6kg



BS-15460



BS-08050

## WORKSAFE LED (INTRINSICALLY SAFE)

CAT NO	LIGHT OUTPUT	DISTANCE	BATTERY TYPE	RUN TIME	WATERPROOF	WEIGHT
<b>BS-15460</b>	80 lumens	100m	(2) D cell batteries	Up to 200 hours	Yes	130g
<b>BS-08050</b>	90 lumens	165m	(4) D cell batteries	Up to 150 hours	Yes	2.6kg



## INDUSTRIAL LED

<b>CAT NO</b>	<b>BS-11500</b>
<b>BATTERY</b>	(2) D cell batteries
<b>BATTERY LIFE</b>	Up to 200 hours
<b>LUMENS</b>	60 lumens
<b>BEAM DISTANCE</b>	75m
<b>WEIGHT</b>	280g

This flashlight is built to withstand grease and chemicals, along with being crush resistant and having an 'unbreakable' lens



**LEDLENSER**







P7R CORE

<b>CAT NO</b>	<b>LENS-P7RCORE</b>
<b>BATTERY</b>	Rechargeable Lithium-Ion Battery
<b>BATTERY LIFE</b>	Min: 2 hours / Max: 90 hours
<b>LUMENS</b>	1400 lumens
<b>BEAM DISTANCE</b>	300m
<b>WEIGHT</b>	202g



T2-QC HAND TORCH

<b>CAT NO</b>	<b>LENS-T2-QC</b>
<b>BATTERY</b>	3 x AAA Batteries
<b>BATTERY LIFE</b>	Up to 4 hours
<b>LUMENS</b>	140 lumens
<b>BEAM DISTANCE</b>	25m
<b>WEIGHT</b>	106g



CAT NO	LENS-EX7R	LENS-EX7	LENS-IL7R	LENS-IL7
<b>MODEL</b>	EX7R	EX7	IL7R	IL7
<b>RATING</b>	ATEX	ATEX	-	-
<b>BATTERY</b>	Rechargeable Battery pack 3.7V	(3) AA batteries	Rechargeable Battery pack 3.7V	(3) AA batteries
<b>BATTERY LIFE</b>	Min: 10 hours / Max: 45 hours	Min: 16 hours / Max: 45 hours	Min: 6 hours / Max: 40 hours	Min: 7 hours / Max: 37 hours
<b>LUMENS</b>	220 lumens	200 lumens	360 lumens	340 lumens
<b>SAFETY RATING</b>	ATEX (Zone 0/20)	ATEX (Zone 0/20)	ATEX (Zone 2/22)	ATEX (Zone 2/22)
<b>WEIGHT</b>	228g	232g	228g	232g

# LedLenser Hand Held Lighting

## XP30R

CAT NO	LENS-XP30R
<b>BATTERY</b>	18V Bosch Professional Battery
<b>BATTERY LIFE</b>	Min: 0.5 hours / Max: 16 hours
<b>LUMENS</b>	Up to 34,000 lumens
<b>BEAM DISTANCE</b>	Up to 2200 m
<b>WEIGHT</b>	3.12 kg



## P18R

CAT NO	LENS-P18R
<b>BATTERY</b>	Rechargeable Lithium-Ion Battery
<b>BATTERY LIFE</b>	Min: 2.5 hours / Max: 70 hours
<b>LUMENS</b>	4500 lumens
<b>BEAM DISTANCE</b>	720m
<b>WEIGHT</b>	669g



## X21R

CAT NO	LENS-X21R-3
<b>BATTERY</b>	9.6V Rechargeable Ytrion Cell
<b>BATTERY LIFE</b>	Min: 2 hours / Max: 40 hours
<b>LUMENS</b>	5000 lumens
<b>BEAM DISTANCE</b>	800m
<b>WEIGHT</b>	1.315kg



## ML6 RECHARGEABLE LANTERN

CAT NO	LT-3016
<b>BATTERY</b>	Rechargeable Li-ion Battery 18650, 3.7V
<b>BATTERY LIFE</b>	Max: 70 hours, Min: 4 hours
<b>LUMENS</b>	Max: 750, Min: 20
<b>WEIGHT</b>	280g including battery



## ML4 RECHARGEABLE LANTERN

CAT NO	LT-3136
<b>BATTERY</b>	Rechargeable Li-ion Battery 14500, 3.7V
<b>BATTERY LIFE</b>	Max: 45 hours, Min: 3 hours
<b>LUMENS</b>	Max: 300, Min: 5
<b>WEIGHT</b>	71g including battery



LENS-H15R



LENS-H5



LENS-MH10



LENS-IH9R



Powercase  
Compatible with MH4, MH5, MH7,  
MH8, ML4, iH5R and iH9R



LENS-IH11R



LENS-ILH8 / LENS-EXH8



LENS-IH5R



LENS-ILH8R / LENS-EXH8R

CAT NO	LIGHT OUTPUT	DISTANCE	SAFETY RATING	BATTERY TYPE	RUN TIME	WEIGHT
<b>LENS-H15R</b>	2500 lumens	250m	-	Rechargeable Lithium-Ion Battery	Min: 5h / Max: 80h	380g
<b>LENS-H5</b>	350 lumens	160m	-	(2) AA Batteries	Min: 2h / Max: 20h	178g
<b>LENS-MH10</b>	600 lumens	150m	-	Rechargeable Lithium-Ion Battery	Min: 10h / Max: 120h	158g
<b>LENS-IH5R</b>	400 lumens	180m	-	Rechargeable Lithium-Ion or (2) AA Batteries	Min: 40h / Max: 180h	98g
<b>LENS-IH9R</b>	600 lumens	200m	-	Rechargeable Lithium-Ion Battery	Min: 3.5h / Max: 40h	139g
<b>LENS-IH11R</b>	1000 lumens	320m	-	Rechargeable Lithium-Ion Battery	Min: 4h / Max: 100h	179g
<b>LENS-ILH8</b>	280 lumens	80m	-	(3) AA Batteries	Min: 9h / Max: 38h	345g
<b>LENS-ILH8R</b>	300 lumens	160m	-	Rechargeable Lithium-Ion Battery	Min: 7h / Max: 40h	342g
<b>LENS-EXH8</b>	180 lumens	120m	ATEX	(3) AA Alkaline 1.5V Batteries	Min: 15h / Max: 40h	345g
<b>LENS-EXH8R</b>	200 lumens	130m	ATEX	1 x 18650 Rechargeable Battery Pack 3.7v	Min: 10h / Max: 45h	342g



# LedLenser Area Lights

**I-Series** work light range from Led Lenser. Small, sophisticated and full of power; the I-Series work lights are powerful and flexible. Adjustable base, magnet and hook for mounting allow positioning flexibility. Easily charged via magnetic charge system plus a range of other great features make for a fantastic work light.



CAT NO	LENS-IF2R	LENS-IF3R	LENS-IF4R	LENS-IF8R
<b>MODEL</b>	IF2R	IF3R	IF4R	IF8R
<b>BATTERY</b>	Rechargeable Lithium-Ion Battery	Rechargeable Lithium-Ion Battery	Rechargeable Lithium-Ion Battery	Rechargeable Lithium-Ion Battery
<b>BATTERY LIFE</b>	Min: 3 hours / Max: 6 hours	Min: 1.5 hours / Max: 15 hours	Min: 1.5 hours / Max: 15 hours	Min: 1.25 hours / Max: 12 hours
<b>LUMENS</b>	200 lumens	1000 lumens	2500 lumens	4500 lumens
<b>WEIGHT</b>	88g	392g	1.06kg	1.74kg





# **e-flare<sup>®</sup>**

**BE SEEN – BE SAFE**

## **NEXT GENERATION**

- Increased light output
- Longer run time
- Battery status indicator



# Eflare Beacons

**Safety beacons for the 21st century** - Versatile, compact and practically indestructible Eflare LED flares and warning lights will see your workers through the darkest of nights. Eflare safety beacons are visible from over 1km at night, so you can feel confident working in even the most challenging, low-visibility conditions. The Eflare beacons are available for a range of industries, Emergency Services, Rail, Utilities, Industrial, Aviation and Military.

Eflare Beacons are compliant with the publications IEC 60079 Part 0 (General requirements) and Part 11 (Intrinsic Safety "I") and as listed below:

- > IEC60079-0: 2011 Edition 6.0
- > IEC60079.11: 2011 Edition 6.0
- > IEC60529: 2001 Edition 2.1

**Eflare accreditation**

- > Accreditation Level - Ex ic IIC T4 Gc IP66
- > ATEX Certificate No. - ITS10ATEX27129
- > IECEx Certificate No. - IECEx TSA 11.0023
- > IP66 Rated



CAT NO	UB290	UB700	UB280	TB10
MODEL	UB290	UB700	UB280	TB10R
LIGHT COLOUR	Various	Various	Various	Red
CANDELA	70 - 85cd	70 - 85cd	70 - 85cd	Flash: 25
HEIGHT	200mm	200mm	150mm	130mm
FLASH RATE	175fpm	175fpm	175fpm	165-185 fpm
BATTERY	(4) AA Batteries	(2) D Cell Batteries	(4) AA Batteries	(1) AA Battery
BATTERY LIFE	30+ hours	80+ hours	30+ hours	25+ hours
WEIGHT	260g	450g	240g	100g

Eflares come in several colours and colour combinations for example Red, Blue Amber, Green, White (dual colour also available). Can be steady on, flash only or both.

Eflare Beacons are backed by an industry-leading 5 year warranty





**Eflare Rubber Base Mount**  
500-017



**Eflare Aviation Base Mount**  
500-065



**Eflare Cone Clip**  
500-037



**Eflare Magnetic Base Cap**  
500-067



**Eflare Carry Bags**  
500-048 Small  
500-160 Large



**Eflare Magnetic Clip**  
500-059



**Eflare Compact Magnetic Base Cap**  
500-161



**Eflare Rail Base Mount**  
500-166



# NEXT GENERATION

A new generation of  
**INTRINSICALLY SAFE** beacons

NEW





# SCANGRIP®

INNOVATION FROM DENMARK





# SCANGRIP CONNECT Area Lights

The new SCANGRIP CONNECT work lights provide access for all professional users to benefit from SCANGRIP's work lights no matter what batteries and power tool brand the user normally prefers. The SCANGRIP CONNECT work light series is compatible across all leading power tool brands, that is MAKITA, BOSCH, DEWALT, MILWAUKEE, BOSCH GREEN, EINHELL, FEIN, FESTOOL, FLEX, HAZET, HIKOKI, INGERSOLL, METABO, RIDGID, SNAP-ON, and WURTH with more to come!



Simply order your Scangrip light with your preferred 18V battery platform connector and slot the battery into the back of the light.



CAT NO	03.6100C	03.6101C	03.6102C
MODEL	NOVA 2 CONNECT	NOVA 4 CONNECT	NOVA 10 CONNECT
BATTERY LIFE	3-31h with 18V 5.2Ah battery	3-31h with 18V 5.2Ah battery	1.25 hours with 18V 5.2Ah battery
LUMENS	2000 lumens	4000 lumens	10,000 lumens
WEIGHT	0.72kg	2.35kg	3.72kg



AREA 6 CONNECT



AREA 10 CONNECT

CAT NO	03.6108C
BATTERY LIFE	22h with 18V 5.2 Ah battery
LUMENS	6000 lumens
WEIGHT	1.97kg

CAT NO	03.6103C
BATTERY LIFE	6.5h with 18V 5.2 Ah battery
LUMENS	10,000 lumens
WEIGHT	3.7kg

# SCANGRIP Area Lights

SCANGRIP area lights are extremely durable and made to last. The entire product line is sturdy and endures the really demanding working environment which expose both the professional worker and their tools to rough, wet, and dirty conditions. The lights are covered by a high IP protection rating to resist outdoor use in all kinds of weather. Unique design allows your light to be portable, rechargeable, with exchangeable batteries or with a cable.



Replaceable Battery



CAT NO	03.6000	03.6001	03.6002
MODEL	NOVA 4 SPS	NOVA 6 SPS	NOVA 10 SPS
BATTERY	Rechargeable Lithium-Ion Battery	Rechargeable Lithium-Ion Battery	Rechargeable Lithium-Ion Battery
BATTERY LIFE	Up to 15 hours	Up to 20 hours	Up to 10 hours
LUMENS	4000 lumens	6000 lumens	10000 lumens
WEIGHT	1.97kg	2.69kg	3.6kg



NOVA R

CAT NO	03.5456
BATTERY	Rechargeable Lithium-Ion Battery
BATTERY LIFE	Up to 20 hours
LUMENS	2000 lumens
WEIGHT	705g



AREASPS10

CAT NO	03.5618
BATTERY	Rechargeable Lithium-Ion Battery
BATTERY LIFE	Up to 10 hours
LUMENS	4000 lumens
WEIGHT	3.5kg

High efficiency 360° area work light with exchangeable battery



CAT NO	03.5606	03.5600	03.5611	03.5618
<b>MODEL</b>	EX-VIEW	UNI-EX	MIDI-EX	NOVA-EX R
<b>BATTERY</b>	Rechargeable Li-Ion Battery	Rechargeable Li-Ion Battery	Rechargeable Li-Ion Battery	Rechargeable Li-Ion Battery
<b>BATTERY LIFE</b>	Up to 3.5 hours	Up to 6 hours	Up to 5 hours	Up to 5 hours
<b>RATING</b>	ATEX	ATEX	ATEX	ATEX
<b>LUMENS</b>	200 lumens	290 lumens	280 lumens	4000 lumens



**Large Magnetic Bracket**  
03.5391



**EX Magnet Bracket**  
03.5616



**Dual Bracket for Tripod**  
03.5308



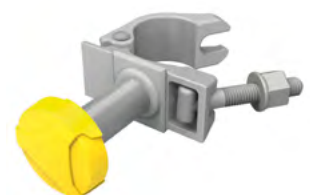
**Scangrip Tripod**  
03.5431



**SCANGRIP DIFFUSER**  
03.5750



**Scaffolding Bracket**  
03.5341



**SCAFFOLDING BRACKET EX**  
03.5609

# **TF TRADE TUFF**







TUFF-T4000

<b>CAT NO</b>	<b>T4000A</b>
<b>BATTERY</b>	4-in-1 Adapter accepts a variety of 18V battery platforms
<b>RUNTIME</b>	Up to 16 hours (based on an 18V 5.0Ah battery)
<b>LUMENS</b>	4000 lumens
<b>IP RATING</b>	IP65
<b>WEIGHT</b>	3.11kg

The TUFF-T4000 is a rugged and highly versatile work light. It provides the user an opportunity to use their existing power tool batteries by accepting over 8 different 18V Li-ion battery platforms. The TUFF-T4000 can be used as a hybrid light, allowing you to purchase it with a 110V mains or 240V mains alongside its own 22.2V li-ion battery or either of the battery adapters. Methods of attachment include; adjustable hooks, magnetic feet or it can be mounted on a tripod.



TUFF TWIN FOLD

<b>CAT NO</b>	<b>TF1500R</b>
<b>LUMENS</b>	1500
<b>RUNTIME</b>	Up to 3 hours (dimnable for longer times)
<b>IP RATING</b>	IP54
<b>WEIGHT</b>	1.56kg

The TUFF TWIN FOLD offers a 1500 lumen output through an anti-glare diffused lens for wide angle shadow-free light. It uses a 3.7V 8800mAh rechargeable Li-ion battery with a charging time of 5 hours at 5V 2A, or 10 hours at 5V 1A. The light offers a runtime of 2 hours at 100%, 3 hours at 50% or fully dimmable for longer runtimes. The TWIN FOLD opens to 290° and is waterproof to IP54, it is supplied with an ABS heavy duty case and 3M cable complete with CEE plug.



TOUGH ONE RECHARGEABLE WORK LIGHT

<b>CAT NO</b>	<b>JCB-WL-TOUGH-ONE</b>
<b>LUMENS</b>	1500 lumens
<b>RUNTIME</b>	3 hours 100%; 6 hours 50%
<b>CHARGE TIME</b>	4 hours
<b>BEAM DISTANCE</b>	15 metres
<b>IP RATING</b>	IP68
<b>WEIGHT</b>	1kg

Micro USB Charging Point	IP68 Dust & Weatherproof
Battery Charge Indicator	Micro USB Charging Lead
Built in Magnetic Stand	Tripod Mountable



**TUFF-T4000 22.2V 44.4Ah Li-ion Rechargeable Battery**  
T4000-22.2

- IP65 Waterproof
- Battery Status Indicator
- Charge Time: 3 hours
- Run Time: 4 hours 100% / 8 hours 50% / 16 hours 25%



**TUFF-T400 240V Mains Charger for 22.2V Li-ion Battery**  
T4000-CH



**GP PowerBank 5000mAh Red**  
MP05MA



**GP PowerBank 1000mAh Blue**  
MP10MA

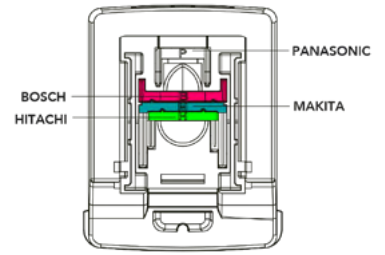


**GP PowerBank 15000mAh Grey**  
MP15MA



**Medium Duty 1.5m Tripod**  
T1.5

- 1.5m Working Height
- Fully Adjustable
- Weight: 5Kg



**4 IN 1 Power Tool Adapter**  
T4000AD.4.1

- Compatible with Makita Bosch Hitachi and Panasonic 18V Li-ion Batteries



**5 IN 1 Power Tool Adapter**  
T4000AD.5.1

- Compatible with DeWalt, Milwaukee, Metabo, Mafell and CAS 18V Li-ion Batteries



20W LED RECHARGEABLE FLOODLIGHT

<b>CAT NO</b>	<b>JCB-FL20S</b>
<b>LUMENS</b>	2000 lumens
<b>RUNTIME</b>	6-7 hours
<b>CHARGE TIME</b>	3-4 hours
<b>BATTERY</b>	1 x 22.2V 4.4Ah
<b>IK RATING</b>	IK09
<b>WEIGHT</b>	3.1kg



40W LED RECHARGEABLE FLOODLIGHT

<b>CAT NO</b>	<b>JCB-FL40S</b>
<b>LUMENS</b>	4000 lumens
<b>RUNTIME</b>	3-3.5 hours
<b>CHARGE TIME</b>	3-4 hours
<b>BATTERY</b>	1 x 22.2V 4.4Ah
<b>IK RATING</b>	IK09
<b>WEIGHT</b>	3.1kg



20W LED RECHARGEABLE POWER LIGHT

<b>CAT NO</b>	<b>JCB-PLT20</b>
<b>LUMENS</b>	2000 lumens
<b>RUNTIME</b>	6-7 / 12-14 hours (1 / 2 Batteries)
<b>CHARGE TIME</b>	3-4 hours
<b>BATTERY</b>	2 x 22.2V 4.4Ah
<b>IK RATING</b>	IK09
<b>WEIGHT</b>	3.9kg

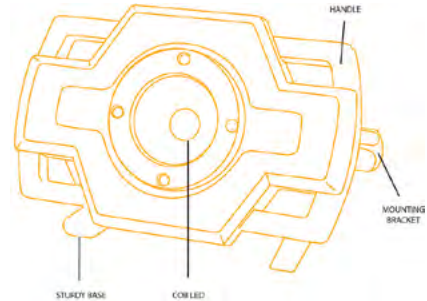


40W LED RECHARGEABLE POWER LIGHT

<b>CAT NO</b>	<b>JCB-PLT40</b>
<b>LUMENS</b>	4000 lumens
<b>RUNTIME</b>	3-3.5 / 6-7 hours (1 / 2 Batteries)
<b>CHARGE TIME</b>	3-4 hours
<b>BATTERY</b>	2 x 22.2V 4.4Ah
<b>IK RATING</b>	IK09
<b>WEIGHT</b>	3.9kg



The LED Rechargeable Industrial Task Light is 50W offering up to 4000 lumens light output. The light is available with a 14.8V battery delivering a runtime of up to eight hours from a 4-6 hour charge time. The product is supplied with a sturdy mounting bracket and has a 100% or 50% mode for brightness.



## 50W LED RECHARGEABLE INDUSTRIAL TASK LIGHT

<b>CAT NO</b>	<b>JCB-IT50</b>
<b>LUMENS</b>	4000 lumens
<b>RUNTIME</b>	High: 2-2.5 hours / Low: 7-8 hours
<b>CHARGE TIME</b>	5-6 hours
<b>BATTERY</b>	1 x 14.8V 5200mAh
<b>WEIGHT</b>	2.5kg



Magnetic base allows flexibility in light positioning

## GLOBE LIGHT

<b>CAT NO</b>	<b>JCB-PT55</b>
<b>LUMENS</b>	600 lumens
<b>RUNTIME</b>	3.5 hours
<b>CHARGE TIME</b>	5 hours
<b>BATTERY</b>	3.7V 4000mAh
<b>WEIGHT</b>	400g



## JCB ADJUSTABLE TRIPOD

<b>CAT NO</b>	<b>JCB-TRIP</b>
<b>DIMENSIONS OPEN</b>	L755 x W640 x H1682mm
<b>DIMENSIONS CLOSED</b>	L168 x W98 x H665mm
<b>WEIGHT</b>	3.34kg







## Peli 9430 Portable Outdoor Floodlight

- 360 Degree Rotatable Head
- 180 Degree Pivot Head
- Retractable Mast
- IP54 Rated
- 6 X LED Light Source
- Sealed Lead Acid (SLA) Rechargeable Battery



CAT NO	9430C
LUMENS	1500 (Low); 3000 (High)
RUNTIME	Low 15 hours; High 8 hours
CHARGE TIME	5 hours
COLOUR	Yellow & Black
DIMENSIONS	40 x 20 x 23cm
HEIGHT	Max 82cm
WEIGHT	10.3kg



## Peli 9440 Rechargeable Remote Area Light

- Wide Beam Spread
- IP65 Rated
- 12 X LED Light Source
- Lithium-ion Rechargeable Battery



CAT NO	9440
LUMENS	1500 (Low); 2800 (Med); 5300 (High)
RUNTIME	Low 8 hours; Med 4 hours; High 1 hour 50 mins
CHARGE TIME	3 hours 45 mins
COLOUR	Yellow & Black
DIMENSIONS	20 x 90cm (closed)
HEIGHT	Max 215.9cm
WEIGHT	7.3kg



## Peli 9455 Portable Floodlight

Suitable for use in Hazardous Environments

- 360 Degree Rotatable Head
- Retractable Mast
- IP54 Rated
- ATEX Certified
- 10 X LED Light Source
- NiMH Rechargeable Battery



CAT NO	9455Z0
LUMENS	800 (Low); 1600 (High)
RUNTIME	Low 8 hours; Med 4 hours; High 1 hour 50 mins
CHARGE TIME	8 hours
COLOUR	Yellow
DIMENSIONS	39 x 20 x 23cm
HEIGHT	Max 80cm
WEIGHT	7.3kg



## Peli 9460 Portable Floodlight

Portable Floodlight, Housed in a Peli Case

- 360 Degree Rotatable Head
- Retractable Mast
- IP54 Rated
- Dual Head 10 X LED Light Source (Per Head)
- Sealed Lead Acid (SLA) Rechargeable Battery



CAT NO	9460
LUMENS	12,000
RUNTIME	Low 24 hours; High 3 hours
CHARGE TIME	8 hours
COLOUR	Yellow & Black
DIMENSIONS	59.1 x 35.6 x 23.5cm
HEIGHT	Max 201cm
WEIGHT	27.7kg



GALAXY PRO 6K

<b>CAT NO</b>	<b>NSGALAXYPRO-6K</b>
<b>BATTERY</b>	Rechargeable Lithium-Ion Battery
<b>BATTERY LIFE</b>	2.5 - 60 hours
<b>LUMENS</b>	6000 lumens
<b>BEAM DISTANCE</b>	60m
<b>WEIGHT</b>	1.5kg



SOLARIS PRO RECHARGEABLE LIGHT SYSTEM

<b>CAT NO</b>	<b>NS-SOLARISPRO</b>
<b>BATTERY</b>	Rechargeable Lithium-Ion Battery
<b>BATTERY LIFE</b>	48 hours
<b>LUMENS</b>	16,000 lumens
<b>BEAM DISTANCE</b>	500m
<b>WEIGHT</b>	7 - 8.5kg



PROSTAR & PROSTAR LITE

- 2-in-1 searchlight and floodlight
- 10000 lumen light output
- 1200 metre beam
- Maximum runtime 25 hours
- Adjustable 90° tilting head
- Features a wall mountable charging base

CAT NO	PROSTAR	PROSTAR LITE
<b>BATTERY</b>	Rechargeable Lithium-Ion Battery	Rechargeable Lithium-Ion Battery
<b>BATTERY LIFE</b>	2 - 25 hours	1.5 - 18 hours
<b>LUMENS</b>	10,000 lumens	10,000 lumens
<b>BEAM DISTANCE</b>	1200m	1200m
<b>WEIGHT</b>	1.8kg	1.5kg



DML809

<b>CAT NO</b>	<b>DML809</b>
<b>BATTERY</b>	2X 18V LXT® Lithium-Ion
<b>BATTERY LIFE</b>	1.7 / 4.5 / 8.5 hours
<b>LUMENS</b>	10,000 / 4,000 / 2,000 lumens
<b>WEIGHT</b>	6.99kg



DML811

<b>CAT NO</b>	<b>DML811</b>
<b>BATTERY</b>	18V LXT® Lithium-Ion
<b>BATTERY LIFE</b>	3 / 7 / 13 hours
<b>LUMENS</b>	3,000 / 1,500 / 750 lumens
<b>WEIGHT</b>	4.72kg



M18 HOSALC

<b>CAT NO</b>	<b>M18-HOSALC</b>
<b>BATTERY</b>	All MILWAUKEE® M18™ batteries
<b>BATTERY LIFE</b>	75 / 3.5 / 2.5 hours
<b>LUMENS</b>	1700 / 4000 / 6000 lumens
<b>WEIGHT</b>	11.1kg



M18 UBL (UTILITY BUCKET LIGHT)

<b>CAT NO</b>	<b>M18-UBL</b>
<b>BATTERY</b>	All MILWAUKEE® M18™ batteries
<b>BATTERY LIFE</b>	6 / 4 / 4 hours
<b>LUMENS</b>	800 / 2200 / 2500 lumens
<b>WEIGHT</b>	4.3kg



GLI 18V-10000 C PROFESSIONAL

<b>CAT NO</b>	<b>GLI-18V-10000</b>
<b>BATTERY</b>	18V
<b>BATTERY LIFE</b>	12.5 mins/Ah
<b>LUMENS</b>	10,000 lumens
<b>WEIGHT</b>	3.9kg



GLI 18V-2200 C PROFESSIONAL

<b>CAT NO</b>	<b>GLI-18V-2200</b>
<b>BATTERY</b>	14.4-18 V
<b>BATTERY LIFE</b>	100 mins/Ah
<b>LUMENS</b>	2,200 lumens
<b>WEIGHT</b>	1.9kg



Designed for use on electrified power lines for the purpose of demarcating residual electrical hazards and/or limits of isolation.

Each product has reflective signage carrying word "Danger". Other wording available. Individual lightweight blue LED lights are attached to each sign which can be set to either flash or be steady-on mode. Fitted with 2 lithium coin cell batteries, the lights will work for up to 240 hours in flash mode, or 100 hours in steady-on mode.



OVERHEAD  
SIGN

Designed to be attached directly on to an overhead line using a snap on style earthing clamp (Catu) using operating rods, the sign and light has a swivel connection to allow free movement.

CAT NO	DESCRIPTION
NWR-DEM-OH-SIGN-AL-D	Overhead Sign - Danger
NWR-DEM-VM-SIGN-AL-D	Vertical Mount Sign - Danger
NWR-DEM-CONE-SIGN-AL-D	Cone Mounted Sign - Danger



VERTICAL MOUNT  
SIGN

Can easily be mounted on to any metallic structure with magnets attached to the back of the sign.



CONE MOUNTED  
SIGN

Comes with a specially designed flexible sleeve on the back of the sign which slips easily over the cone.

750mm tall weighted blue/white cone can be purchased separately.



# Specialist Demarcation Lights & Signs

Designed for use on electrified power lines for the purpose of demarcating residual electrical hazards and/or limits of isolation.

Each product has reflective signage carrying word "Danger". Other wording available. An E-flare Beacon with Blue LEDs is attached to each sign which can be set to either flash or be continuously on.



OVERHEAD SIGN

Designed to be attached directly on to an overhead line using a snap on style earthing clamp (Catu) using approved operating rods, the sign and light has a swivel connection to allow free movement.

## CAT NO

**NWR-DEM-OH-SIGN-EF-D**

**NWR-DEM-VM-SIGN-EF-D**

**NWR-DEM-CONE-SIGN-EF-D**

**AT700B**

## DESCRIPTION

Overhead Sign - Danger

Vertical Mount Sign - Danger

Cone Mounted Sign - Danger

Eflare Blue Flash/Solid



VERTICAL MOUNT SIGN

Can easily be mounted on to any metallic structure with magnets attached to the back of the sign.



CONE MOUNTED SIGN

Comes with a specially designed flexible sleeve on the back of the sign which slips easily over the cone.

750mm tall weighted blue/white cone can be purchased separately.



## EFLARE AT700B SAFETY BEACON

The AT700B Beacon is lightweight and easy to deploy. Visible at a distance of over 1km. The standard unit will last 63 hours at full strength, using standard D cell batteries, IP66 rated and is not affected by electromagnetic fields. The standard units have a flash rate of 0.9 flashes per second. They are intrinsically safe. The beacons are easily operated by rotating the lens in a clockwise direction to activate the switch and anti-clockwise to turn off. The units are designed to maintain constant peak brightness of its LEDs over the life of the batteries. A Low Battery Indicator will start to flash when it is time to change the batteries. The LBI will continue to flash with the other LEDs.



## Portable AC RoLE integrated hazard warning sign with built in LED lighting.

The Industrial Beacon is designed to hang on an overhead line for demarking residual electrical hazards and/or limits of isolation.

Combining the latest LED technology with high visibility signage.

Specified to have a run time in excess of 72 hours, during testing a run time in excess 120 hours was achieved.

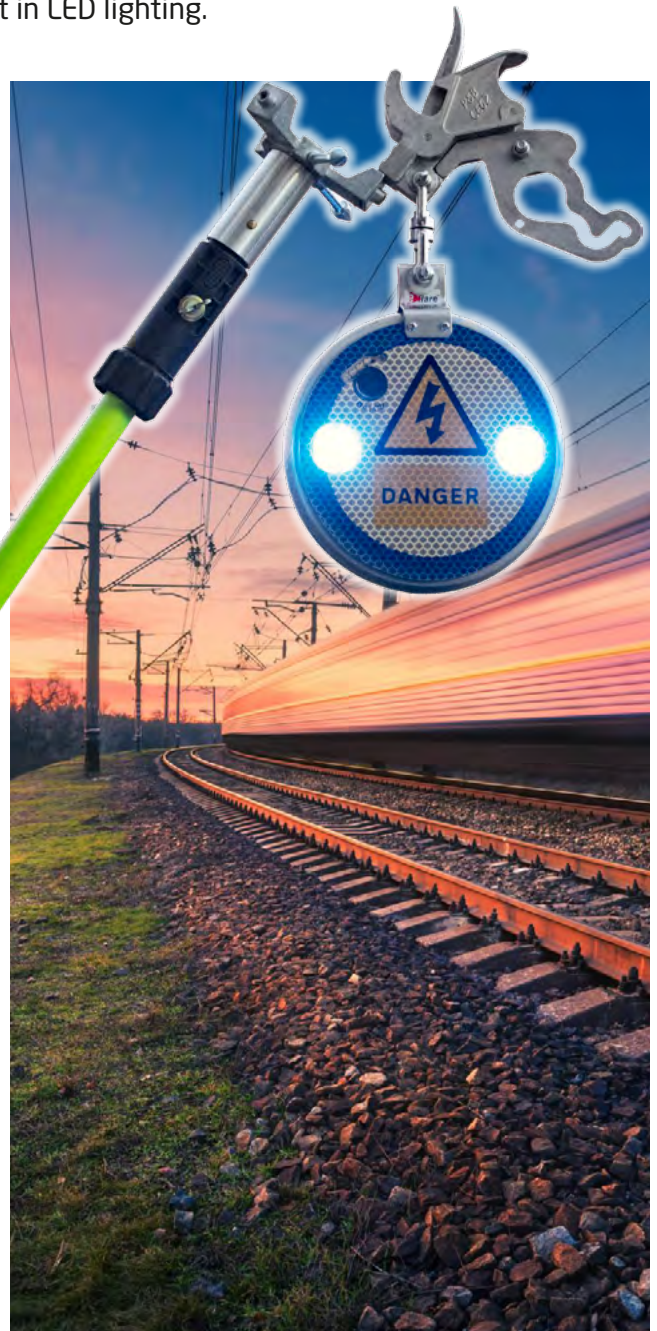
The housing is manufactured from lightweight, durable impact resistant, polycarbonate. Signage indicates the electrical hazard symbol with optional wording of "Danger".

The flashing blue LEDs are designed to face downwards to enhance visibility from the ground.

Visible day or night, a light sensor controls the brightness allowing the unit to shine brightest during daylight, saving battery life during the hours of darkness.

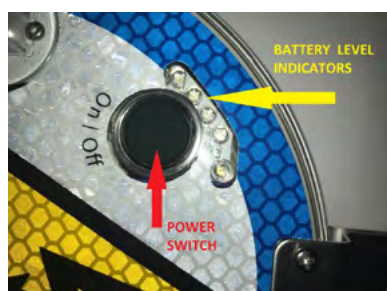
Emitting a light pulse of 1-2Hz the IRB is visible at 25m in daylight.

The IRB has four additional LEDs to indicate the status of the battery. One red, one amber, two green.



<b>CAT NO</b>	<b>RBD22B</b>
<b>POWER SOURCE</b>	6 * "C" cell batteries – recommended NiMH 5000mAh suitable NiMH 4500mAh, Duracell PRO-CELL (or very high quality equivalent)
<b>LIGHT OUTPUT COLOUR</b>	Blue 465 - 485nm
<b>LIGHT OUTPUT RANGE</b>	Greater than 25m
<b>FLASH RATE</b>	1 – 2Hz
<b>RUN TIME</b>	Greater than 72 hours continuous with 6 * NiMH "C" cells fully charged
<b>OPERATING HEIGHT</b>	>3m
<b>DIMENSIONS</b>	Body diameter 22cm, width 4.6cm
<b>WEIGHT</b>	1.12kg with NiMH batteries, 0.62kg without batteries

CAT NO	DESCRIPTION
<b>NWR-RBD22B-D</b>	Industrial Beacon - Danger



### Battery indicator

Four LEDs (one red, one amber, two green) = full charge

Three LEDs (one red, one amber, one green) = battery good

Two LEDs (one red, one amber) = batteries need changing soon

One LED (red) = batteries almost depleted, change immediately, replace or recharge batteries as required





**Horizon Utility Supplies Ltd**  
Unit 1, Windmill Business Park  
Windmill Road  
Clevedon  
Somerset  
BS21 6SR  
United Kingdom

**Tel: +44 (0)1275 342700**  
**Email: [enquiries@hor-i-zon.com](mailto:enquiries@hor-i-zon.com)**

**[www.HorizonUtilitySupplies.com](http://www.HorizonUtilitySupplies.com)**