

MIMO Dual Sharkee® 5G



**IP69K
RATED**

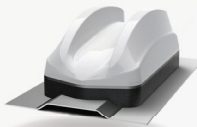
ADDITIONAL MOUNTING OPTIONS WE OFFER



Magnetic Mount

Part no. SAB-311

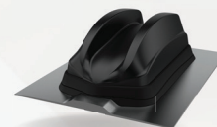
- ✓ Easy Installation
- ✓ For use with all SHKG4 / GPSD4 dual sharkee series antenna models
- ✓ Can be fitted to any conductive surface on the vehicle
- ✓ Ideal for antenna trials and drive-testing



Foam pad

Part no. SAB-312

- ✓ Mounting kit for ribbed or curved/uneven mounting panels
- ✓ Allows fitment on SUV's and Panel Vans
- ✓ For use with all SHKG4 / GPSD4 dual sharkee series antenna models
- ✓ For permanent mounting on the vehicle



Rubber Gasket

Part no. SAB-324-2

- ✓ Dual Sharkee® mounting adaptor kit for Ford Explorer/Interceptor
- ✓ For use with all SHKG4 / GPSD4 dual sharkee series antenna models
- ✓ For permanent mounting on the vehicle

MAKING THE CONNECTION

www.panorama-antennas.com