



15


YEARS
ANNIVERSARY
CELEBRATION

World's Best Hybrid Solutions



Enjoy Green Energy

whisperpower.com



WhisperPower

Energy Power

Highway interchange sign with directional arrows and text in multiple languages.

Contents

Clean, Silent and Durable 4

WhisperPower History 5

Portfolio 6

System Components 7

Features & Benefits 8

System differentiation 10

OctoPower example 11

System development 12

WhisperCare - Control 14

WhisperCare - Analysis 16

Circuit diagram 18

System examples 20 - 29



More sustainability, lower emissions

Exhaust emissions (StageV)

In Europe, we face the challenge of meeting the relevant legislation in terms of emission reduction. WhisperPower offers a wide range of StageV diesel generators from 3kW to 35kW.



Noise emissions

Just as important as exhaust emissions, noise emissions are also a major issue, especially in cities and municipalities. In many places there are limits that must not be exceeded. WhisperPower's diesel generators are all below 55dB.

Sustainable energy solutions

Depending on the project requirements, we can offer systems without fossil fuels. In addition to solar systems, we also offer the corresponding interfaces for wind generators and hydro generators.

Customised energy solutions

In addition to our classic energy systems, we offer sustainable solutions without diesel generators. More and more electrically powered vehicles are being registered, the charging infrastructure is growing and new requirements for self-sufficient energy management are emerging. WhisperPower offers solutions, especially in the fleet sector, for charging e-vehicles and their HV battery at existing charging points!

▼ NHS system: 24V/300A DC generator, 14kVA inverter, 30kW battery bank, 2kW solar feed-in.



WhisperPower

History & Background

1984

Roel ter Heide is responsible for the introduction of inverter systems in the marine sector at VictronEnergy.

1991

Roel ter Heide establishes the company and brand Mastervolt.

1998

The first diesel generators are launched under the brand name Mastervolt Whisper.

2007

WhisperPower BV, The Netherlands is founded and a worldwide dealer network is established.

Since the beginning, research and development has been WhisperPower's top priority.

2010

Development and introduction of the new Genverter product line.

2019

Launch of professional low emission hybrid power systems.

2022

Distribution in over 50 countries - Global Presence



15 YEARS ANNIVERSARY CELEBRATION



Portfolio



Diesel Generators AC & DC

We have the following diesel generators with StageV certification in our portfolio:

- Genverter 1-phase: 3kW, 6kW, 8kW, 9,6kW, 12kW, 15kW, 16kW, 18kW, 24kW
- 1500 rpm 1-phase: 11kW, 14,5kW, 24kW
- 1500 rpm 3-phase: 11kW, 14,5kW, 24kW, 35kW

Energy Storage

- LiFePo4 System Batteries
- LiFePo4 Basic Batteries
- AGM Batteries
- GEL batteries



Charging technology

Fast chargers

Inverter & Charger Combi's

1-phase & 3-phase



Regenerative energy

- Solar Components
- Interfaces for Wind & Hydro
- Fuel cells

Remote monitoring & control

- WhisperCare
- Fleet Management



OctoPower System configurations

Genverter control

Intelligent energy management

Genverter power generator

Adjustable speed

AC PowerCube

High power inverter
4 - 7 - 14 - 32 kVA

Energy Storage

Lithium Power Plus
2kWh - 200 kWh

Belt Power

Alternator AC or DC

Touchscreen

WhisperCare - Remote
monitoring & control

Land connection

90 - 265 VAC 50/60 Hz

DC distribution

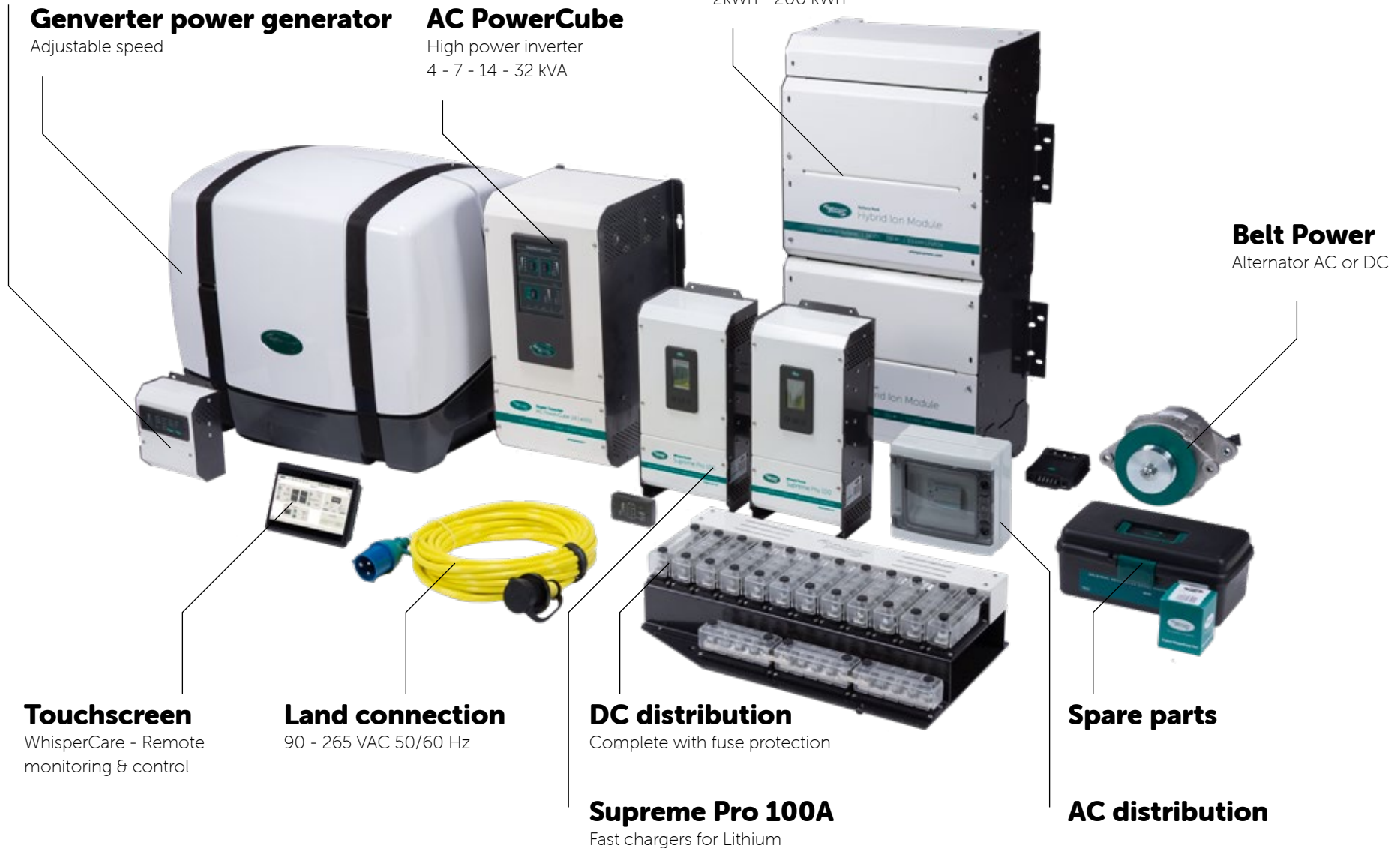
Complete with fuse protection

Supreme Pro 100A

Fast chargers for Lithium

Spare parts

AC distribution



What we do

Service, consulting and development

Supplier of single components

We supply generators, charging technology, inverters and battery systems. Generator systems 12VDC / 24VDC / 48VDC / 230VAC / 400VAC

Individual customer solutions

Together with our customers, WhisperPower carries out a system design. Exactly matched to the needs and requirements.

System design

As a supplier of complete energy systems, WhisperPower offers a complete system from one source!

This includes generators, charging technology, inverters and battery systems perfectly matched to each other.

Service & Development

Customization of individual components possible

Circuit diagrams

We optionally offer the complete development of circuit diagrams of the energy system.

Commissioning

Depending on the customer's system, WhisperPower can perform commissioning and thus ensure safe operation.

Training

WhisperPower offers several trainings per year at the headquarter in Drachten/Netherlands. Furthermore, if required, we also carry out training courses directly on site at our customers. As a tool we also use our demo vehicle with different generators and products.



Motorhomes & Campers



Horse & Sport Truck



Specialty vehicles





Sewer rehabilitation



Medical vehicles



Food trucks



Film industry

System distinction

Possibilities of a system construction

Traditional generator systems

We refer to the traditional generator system as the stand-alone generator that provides the required power to the user when 230VAC or 3-phase power is required.

Features:

- + Easy installation
- + Power range from 4kVA to 50kVA
- Frequent maintenance intervals
- Emissions & Fuel Consumption

Hybrid Systems

Hybrid systems consist of a battery bank, charger, inverter and generator. Here, the AC power (3-phase) is first provided via the inverter and then combined with the generator power and is only combined with the generator power when there is an increased demand. At the same time, the generator starts automatically according to the state of charge of the batteries to recharge them.

Features:

- + Lower emissions and fuel consumption
- + Longer maintenance intervals of the generator
- + Modularly expandable

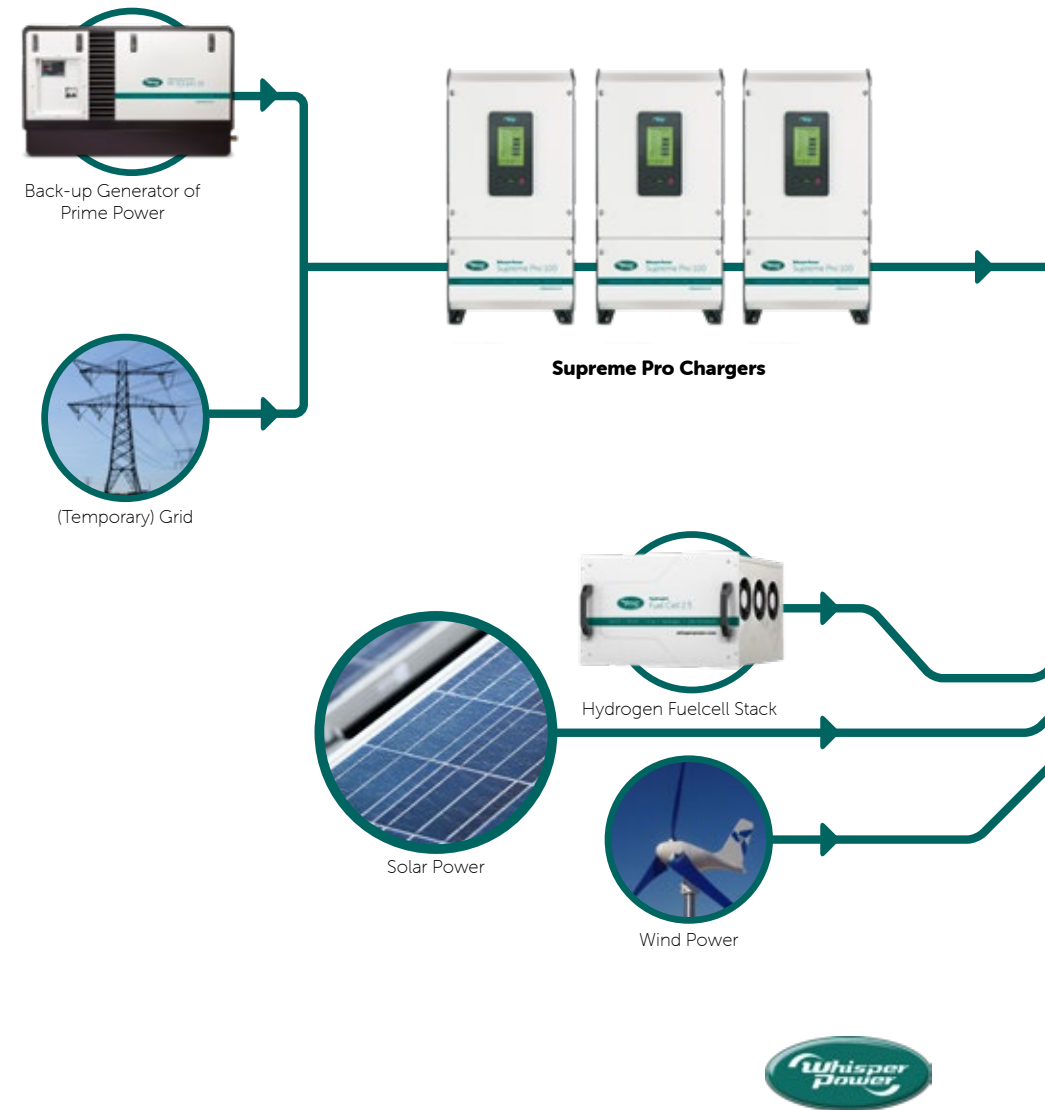
OctoPower (NewSchool systems)

As market leader, we have developed completely new products for these systems. This system consists of a large battery bank, fast chargers (up to 450A at 24VDC), large inverters (up to 14kW single-phase, 3-phase possible) and a DC generator.

Features:

- + Emission-free operation and extremely low generator runtime.
- + Minimal maintenance requirements
- + Absolutely silent and no disturbing vibrations from generator
- + Modularly expandable

OctoPower Example AC power system





Lithium Power Plus Modular Battery Rack System



Full control with WhisperCare (wherever you are)



Super Inverter (1- or 3-phase)
4-32 kVA
230 V - 50 Hz / 120 V - 60 Hz



OctoPower system features

- Durable DC storage solution
- Silent time by heavy-duty inverters
- Diesel generator replacement or Generator running time reducer
- The perfect UPS solution
- Power source for e-propulsion (48VDC available)

OctoPower

System development

How we work with our partners

The energy balance, requirements and usage

Ideally, we get a list of all DC and AC loads from our partners.

Important:

- **DC:** 12V, 24V or 48V consumers (lighting, pumps, etc.)
- **AC:** 230V or 400V consumers (compressors, air conditioning, kitchen appliances, etc.)
- **Type of use:** What environmental conditions? Warm or cold regions? Day/night (e.g. noise emissions)?
- **Energy sources:** Diesel generator, alternator, solar, wind.
- **Installation location:** boat/yacht, vehicle/transporter up to 3.5to, up to 7.5to or larger, premises etc.
- **Wishes:** Remote access? Fleet management? Other?

System planning

Based on the information provided, a system elaboration will take place.

Content:

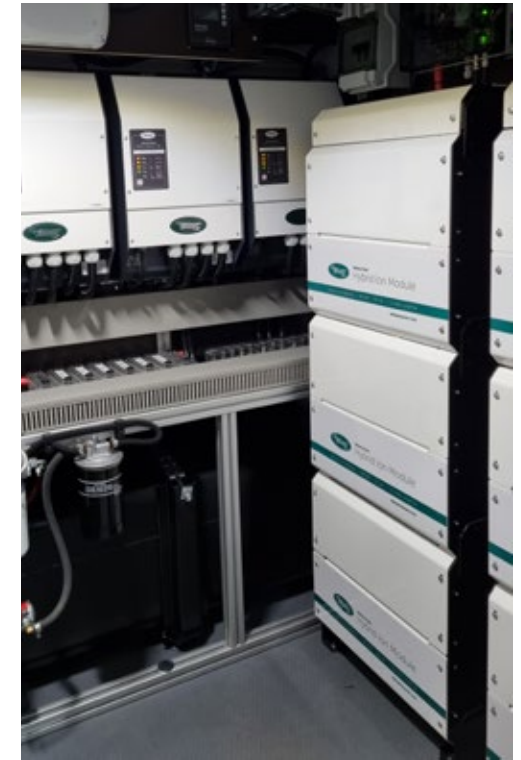
- **Recommendation:** We present the system we recommend as a single-line diagram. presented.
- **Details:** The customer/partner receives a parts list with weight details, prices and conditions.
- **Clarification & Modifications:** Possible alternatives and modifications can be included.

The final system offer

After the system elaboration is completed, the final system offer is made with subsequent order confirmation.

Contents:

- **System overview:** diagram of the final system (single line) including list with weight specifications



W-SQ 40 PRO StageV Hybrid Sprinter - 3-phase inverter
21kW + 35kW diesel generator = 56kW system power.

- **Offer:** The final offer includes all relevant components of a WhisperPower system. It also includes:
 - Wiring diagram: connection diagram of all components (with recommendation of cable cross-sections and fuses)
 - DC distribution: including fuses according to the circuit diagram
 - Remote access: components and services necessary for remote monitoring are necessary
 - Project monitoring: Depending on the requirements, we can monitor the project at regular regular intervals.
 - Commissioning: system commissioning with performance test

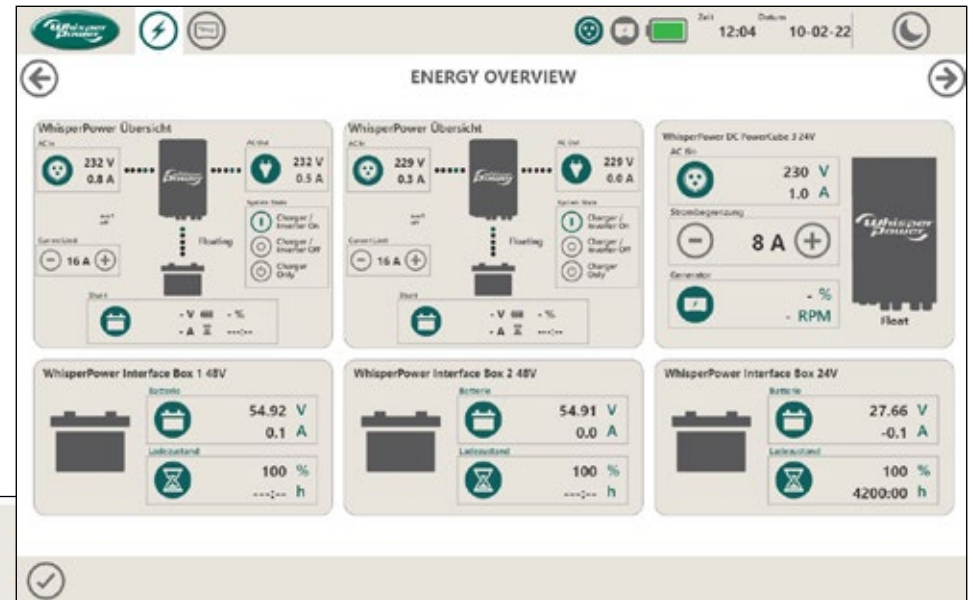




Remote access



- System monitoring
- Remote control
- Fleet management
- History
- Notification
- Analysis



System memo

Online 21-04-2021
Touch panel issues, work in progress.

Update 03-05-2021
Waiting on updated touch panel software, to support vnc setup in current config.
Suspected arrival at the end of the week at which point whisperpower can create a new layout.
28-05 EDO: Layout ready, request from Martijn to integrate info in WhisperCare.

- DC-Charger 1 = WRC 1 Grid
- DC-Charger 2 = WRC 2 Grid
- DC-Charger 3 = 48V-Gen
- DC-Charger 4 = 48V-Gen
- DC-Charger 5 = 24V-Gen/Grid

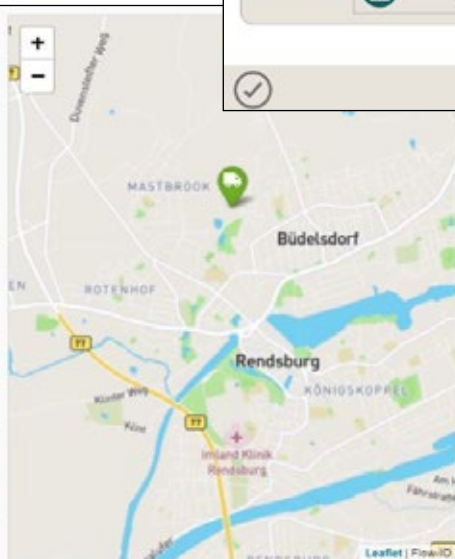
25-12-21 Turned off generator manually (FF)

8313 IST 48VDC Truck System - Multiline_20210223-REV0.pdf size: 1.64MB

8313 IST 48VDC Truck System - Multiline_20210603-REV0.pdf size: 1.65MB

Real time system data

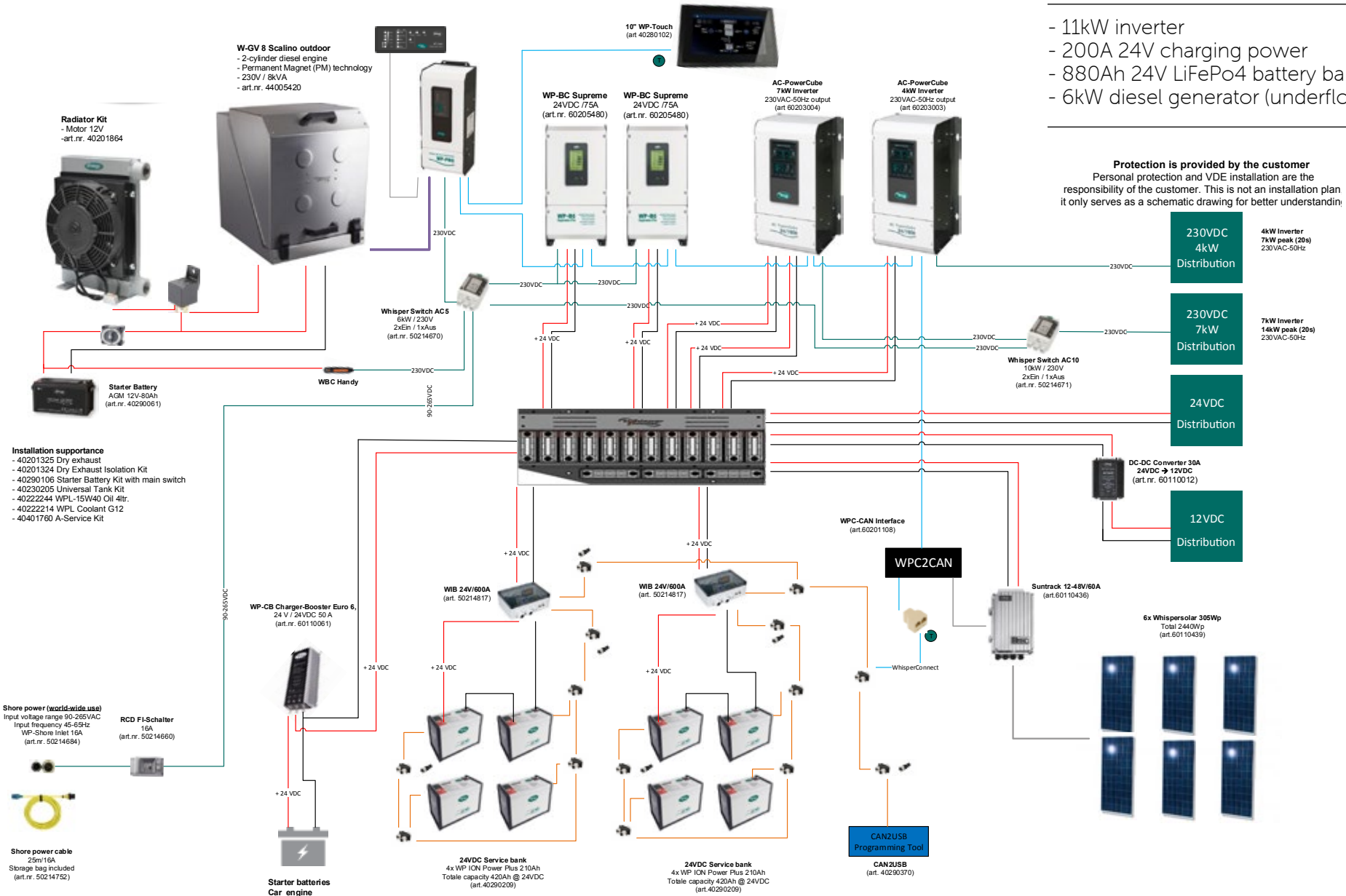
	54.92 Volt	0.1 Amp	5.5 Watt	100% SOC
	54.92 Volt	0 Amp	0 Watt	100% SOC
	27.66 Volt	0 Amp	0 Watt	100% SOC
	13.7 Volt	% Load	Auto: On	Standby
	231 Volt	0.8 Amp	184.8 Watt	Source: n/c
	229 Volt	0.3 Amp	68.7 Watt	Source: n/c
	54.76 Volt	0 Amp	0 Watt	Source: n/c
	54.76 Volt	0 Amp	0 Watt	Source: n/c
	27.6 Volt	7 Amp	193.2 Watt	Source: Grid
	231 Volt	0.5 Amp	115.5 Watt	Status: On
	229 Volt	0.0 Amp	0 Watt	Status: On



System example

Expedition vehicle

- 11kW inverter
- 200A 24V charging power
- 880Ah 24V LiFePo4 battery bank
- 6kW diesel generator (underfloor)



Remote analysis



Message from the customer

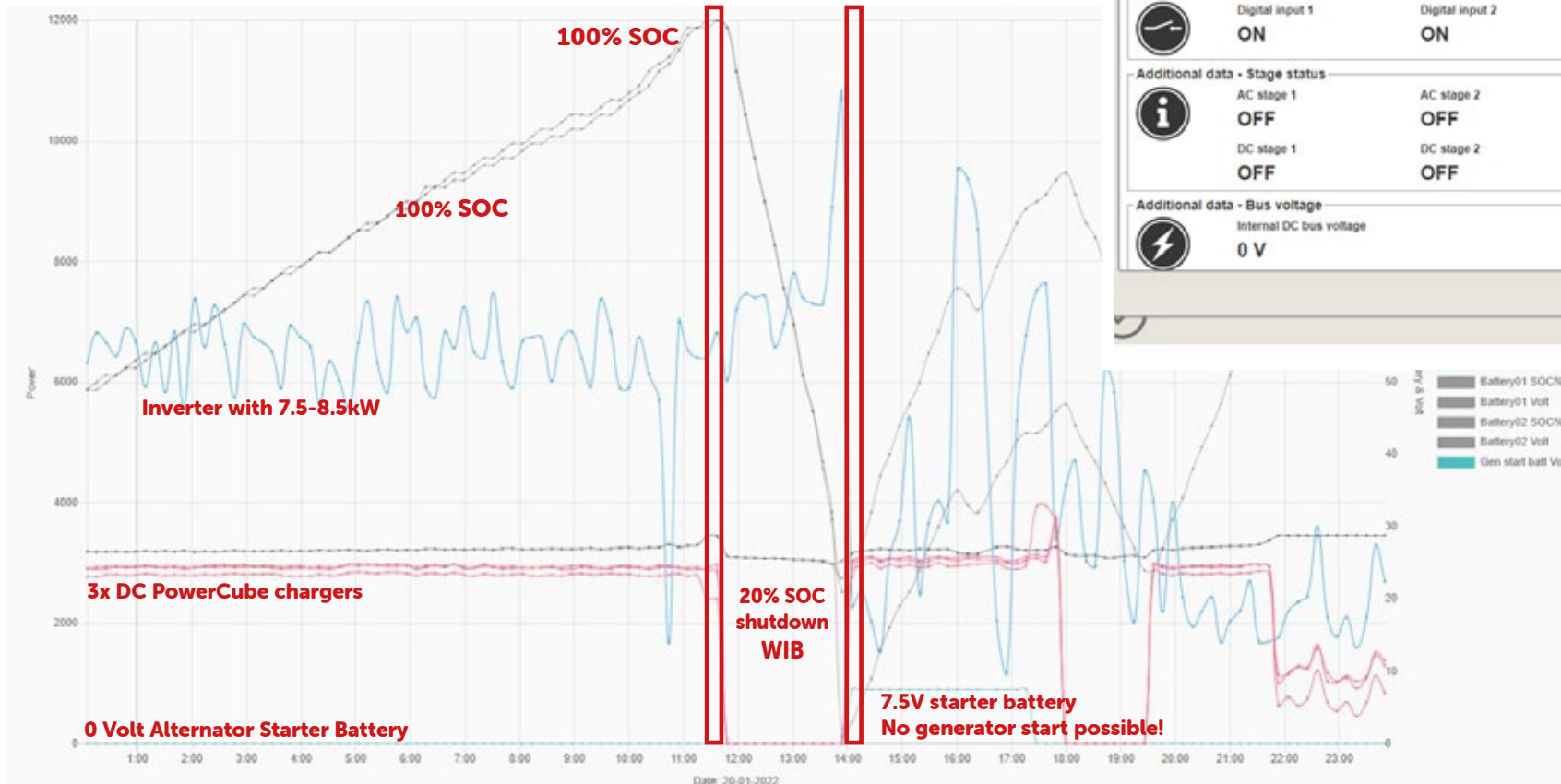
- Functions do not work
- Generator does not start automatically
- System keeps going off
- Temperature error and inverter shutdown

WhisperPower AC PowerCube

Monitor Settings

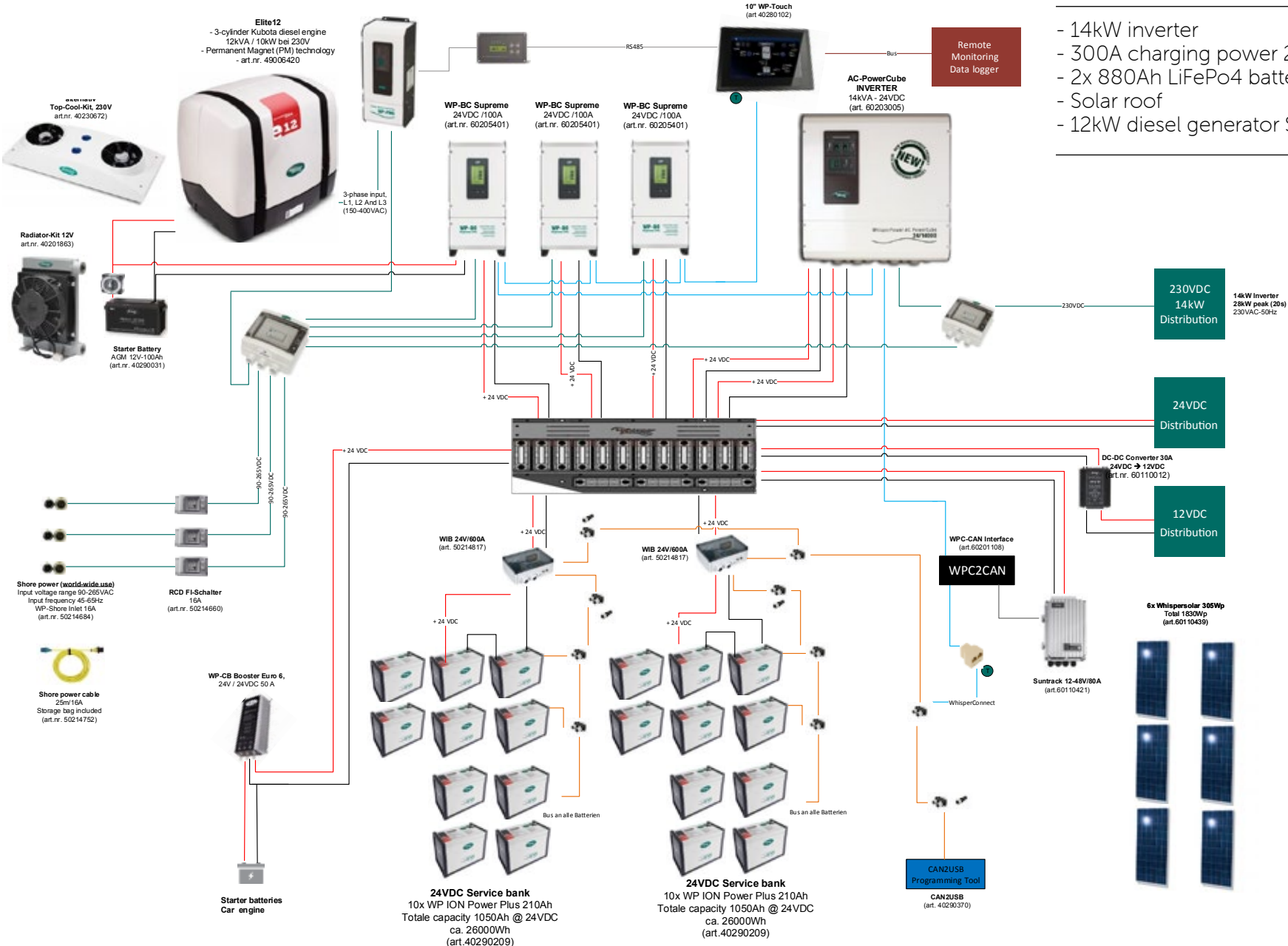
AC output	Voltage 227 V	Current 35.1 A	Frequency 50 Hz	AC output status ON
Battery input	Bank 1 input 26.2 V	Bank 2 input 26.2 V	Bank 3 input 26.3 V	Bank 4 input 26.3 V
	Bank 1 input load 69 %	Bank 2 input load 63 %	Bank 3 input load 64 %	Bank 4 input load 62 %
Temperature	Bank 1 73 °C	Bank 2 61 °C	Bank 3 74 °C	Bank 4 64 °C
Input	Digital input 1 ON	Digital input 2 ON	Digital input 3 ON	Digital input 4 ON
Additional data - Stage status	AC stage 1 OFF	AC stage 2 OFF	AC stage 3 OFF	AC stage 4 OFF
	DC stage 1 OFF	DC stage 2 OFF	DC stage 3 OFF	DC stage 4 OFF
Additional data - Bus voltage	Internal DC bus voltage 0 V			

OK



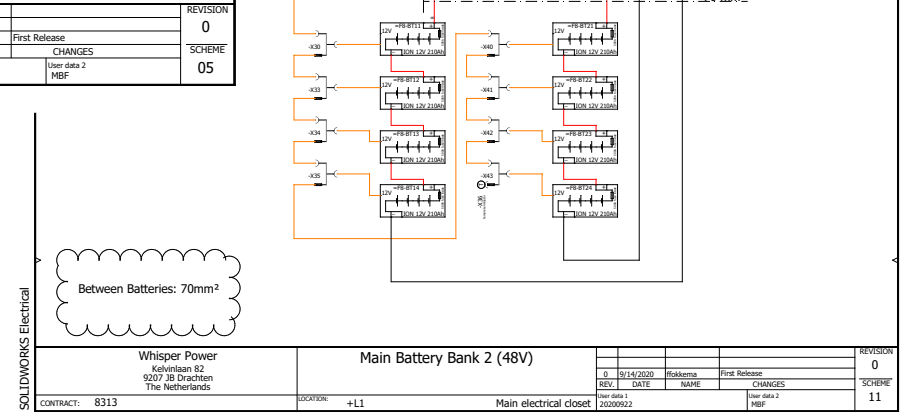
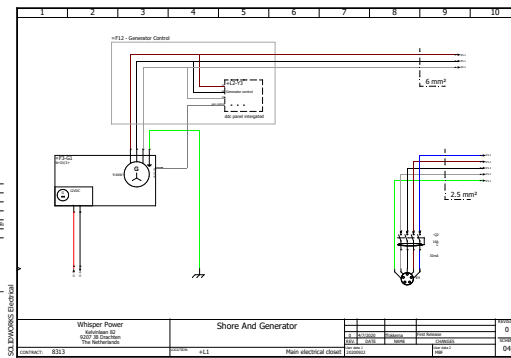
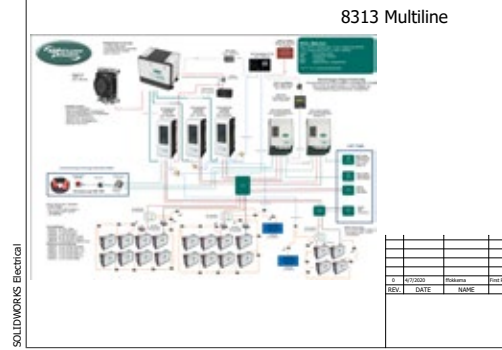
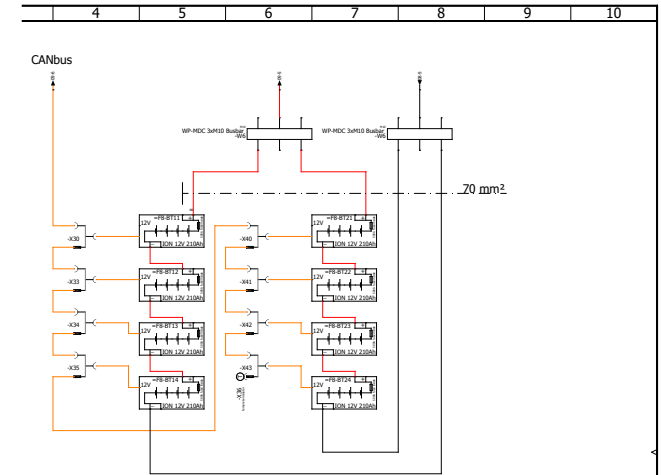
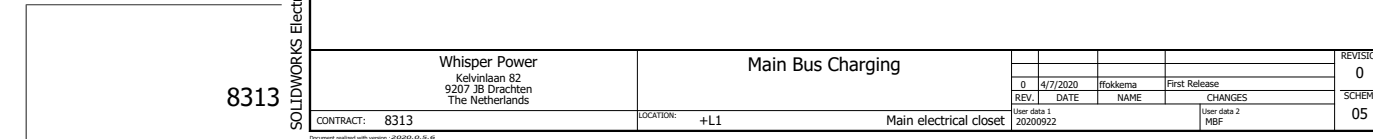
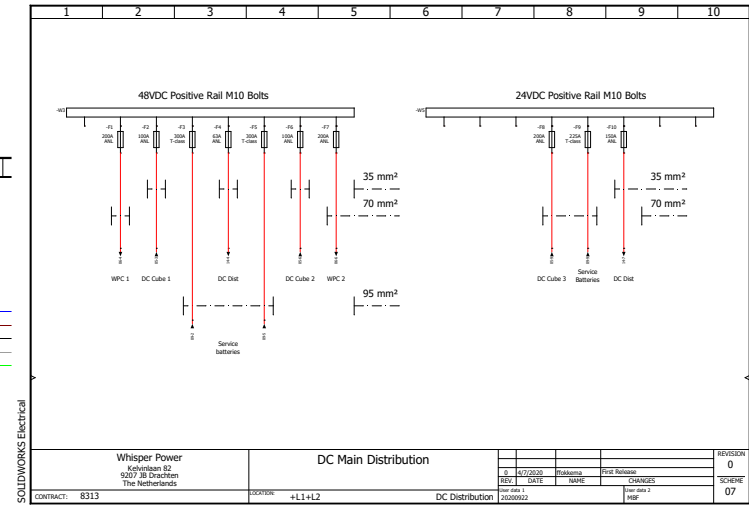
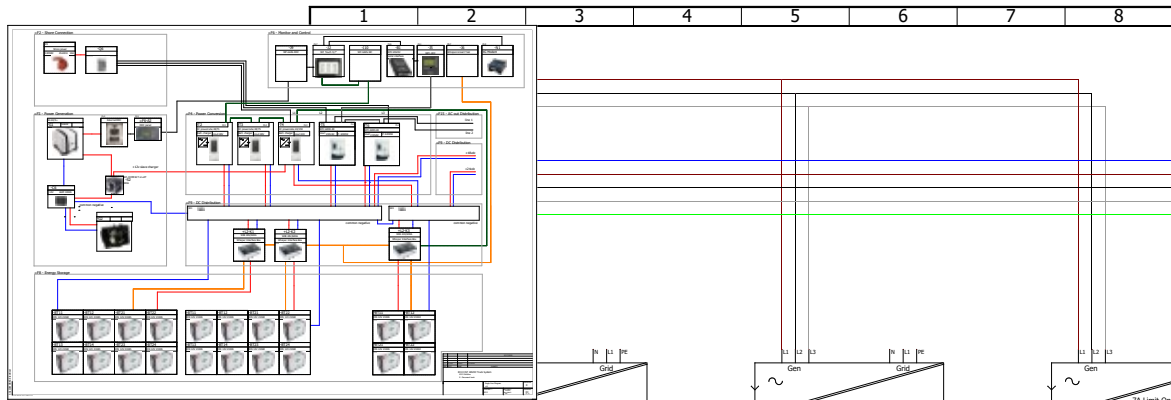
System example

Vehicle for the film industry



- 14kW inverter
- 300A charging power 24V
- 2x 880Ah LiFePo4 battery bank
- Solar roof
- 12kW diesel generator StageV

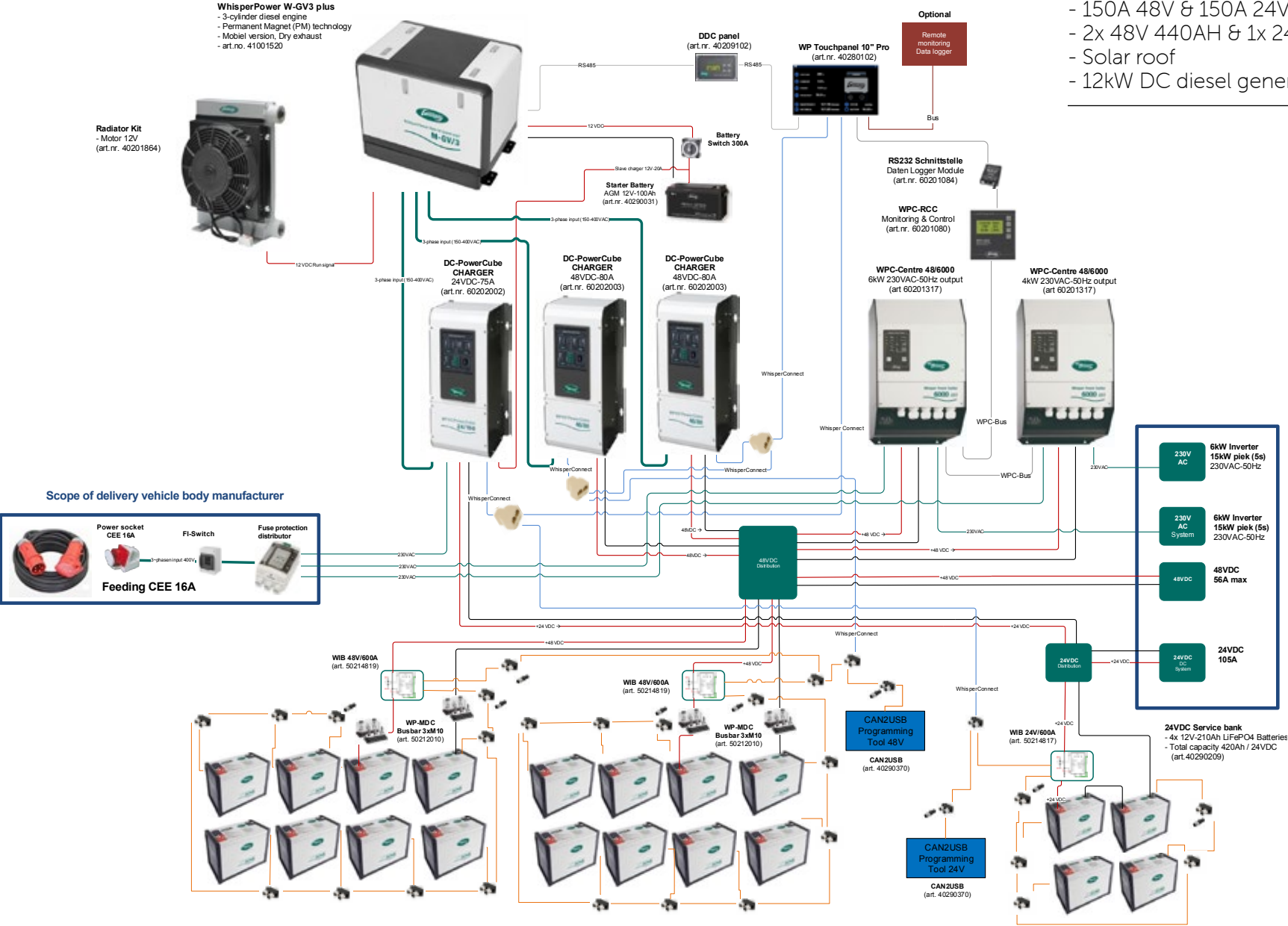
Circuit diagram (multi-line)



System example

Blood donation service vehicle

- 2x 6kW inverter = 12 kW
- 150A 48V & 150A 24V charging power
- 2x 48V 440Ah & 1x 24V 440Ah
- Solar roof
- 12kW DC diesel generator

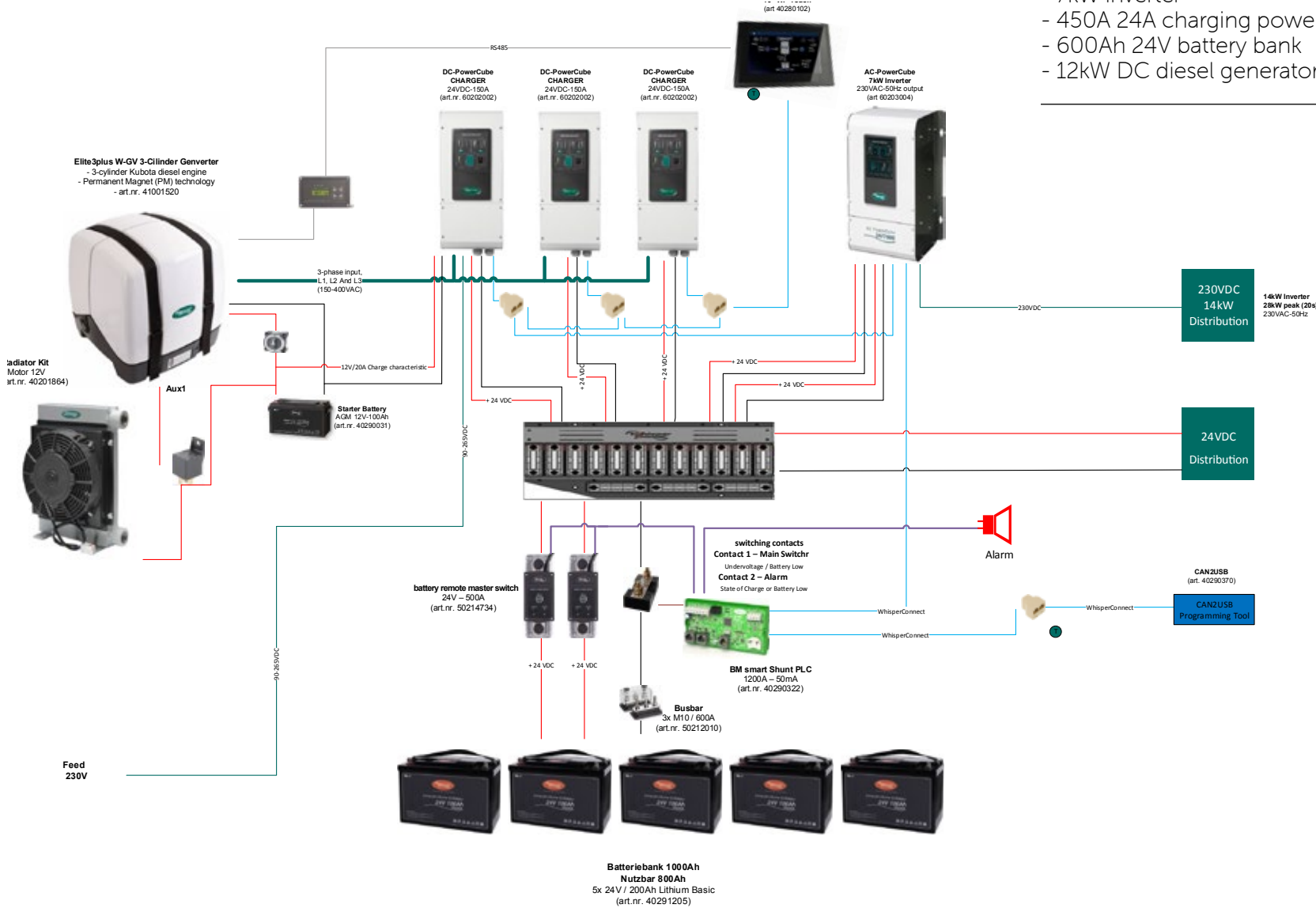




System example

Vehicle for sewer rehabilitation

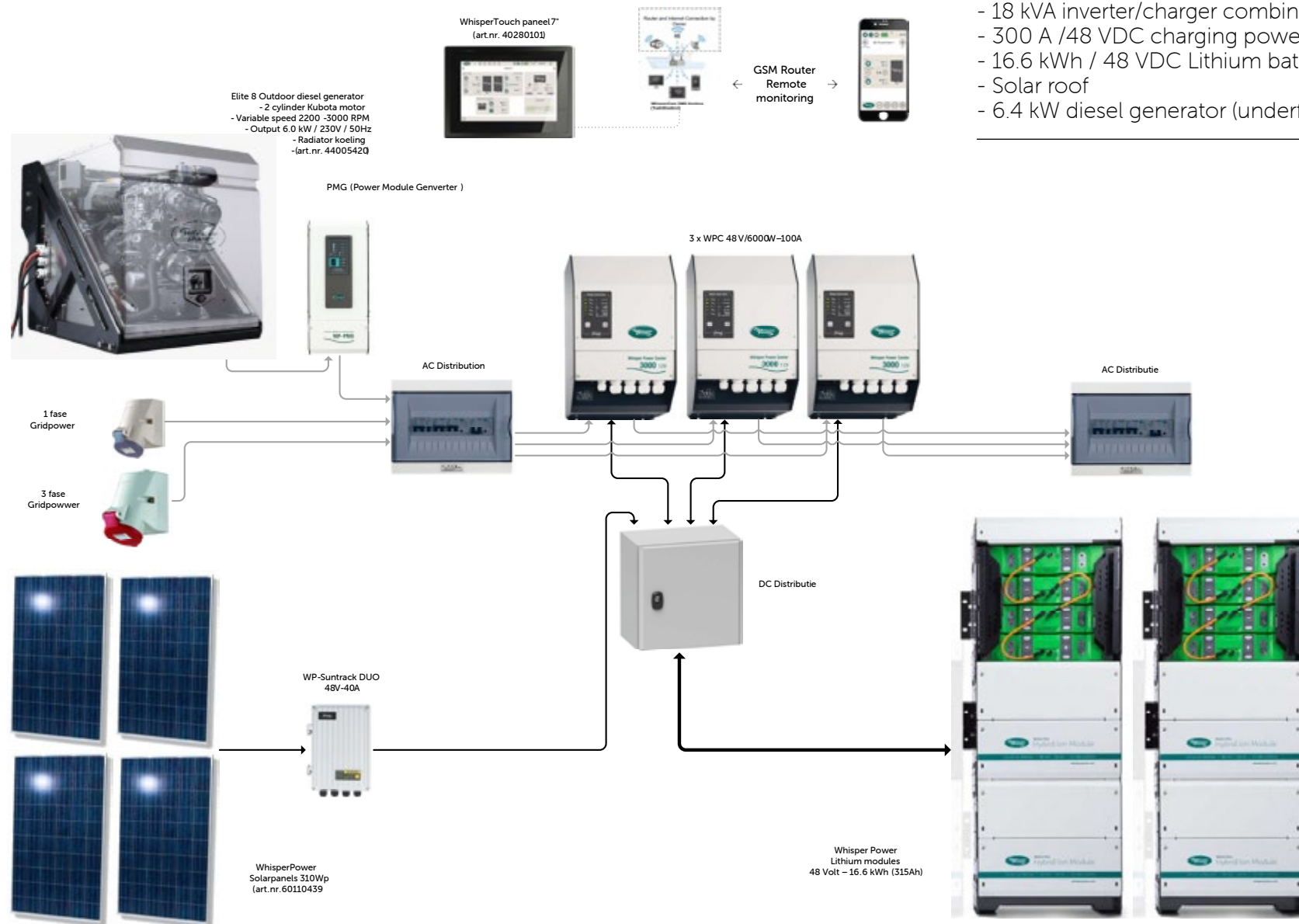
- 7kW inverter
- 450A 24A charging power
- 600Ah 24V battery bank
- 12kW DC diesel generator





System example

Off-grid container with solar



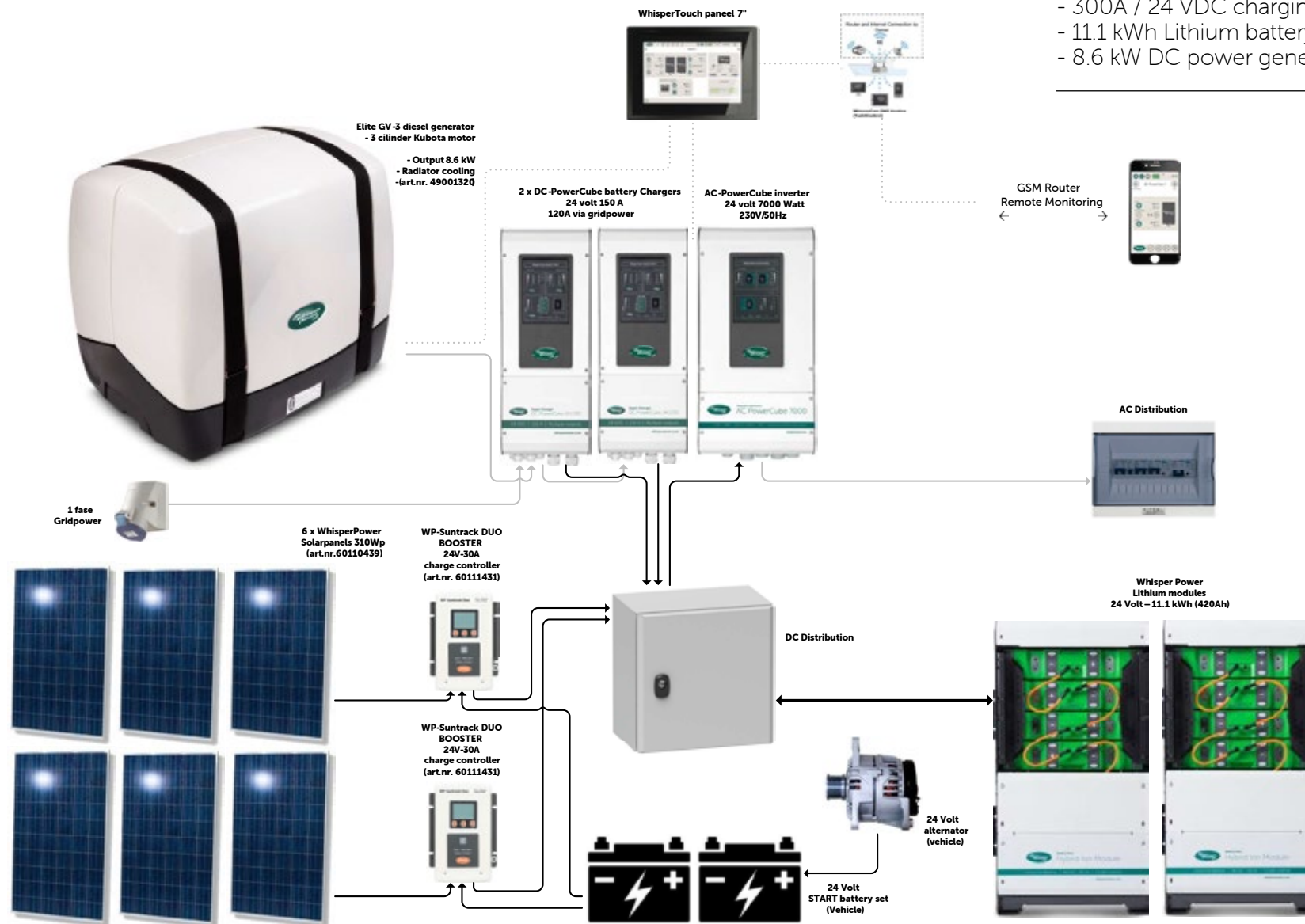
- 18 kVA inverter/charger combination (3 x 380 VAC)
- 300 A /48 VDC charging power
- 16.6 kWh / 48 VDC Lithium battery
- Solar roof
- 6.4 kW diesel generator (underfloor)



System example

Special Operations Vehicle

- 7 kVA inverter
- 300A / 24 VDC charging power
- 11.1 kWh Lithium battery
- 8.6 kW DC power generator

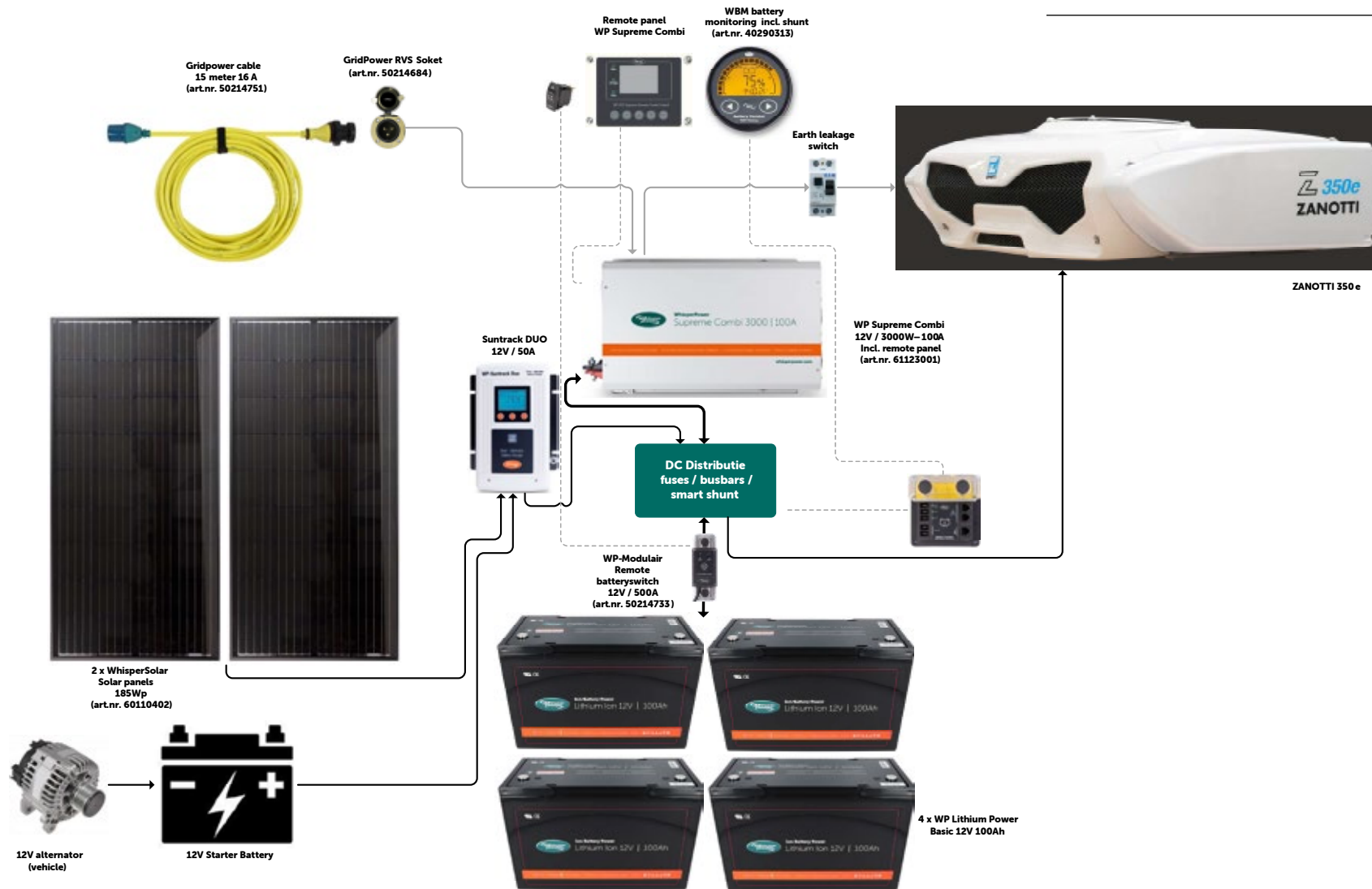




System example

Electric refrigerated truck

- 3 kVA inverter (230 VAC)
- 100 A / 12 VDC Charging capacity
- 5 kWh / 12 VDC Lithium battery
- Solar roof - MPPT



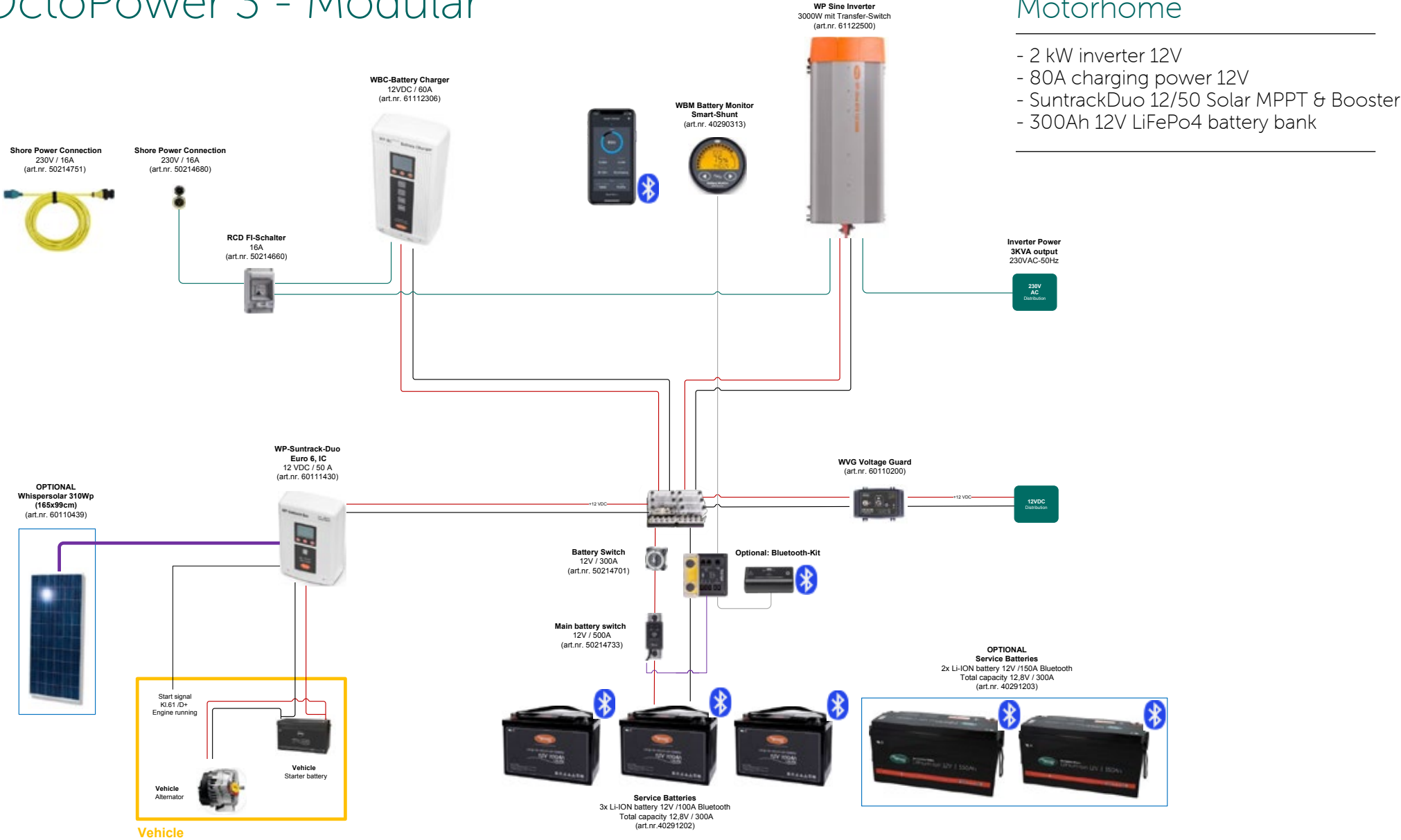


MORELO
FIRST CLASS REISEMOBILE

BA MO 151

OctoPower 3 - Modular

Motorhome



- 2 kW inverter 12V
- 80A charging power 12V
- SuntrackDuo 12/50 Solar MPPT & Booster
- 300Ah 12V LiFePo4 battery bank



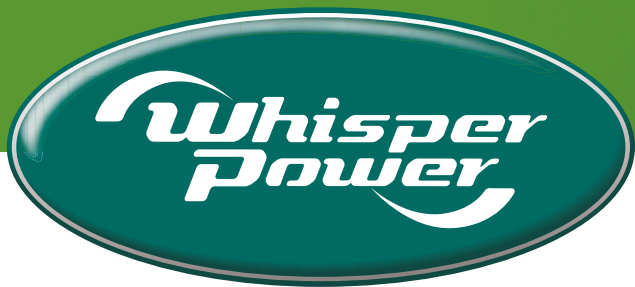


12V · 24V · 48V · 230V · 400V

Green • Clean • Silent



V1 07-2022



Enjoy Green Energy

whisperpower.com