





# WELCOME TO *Point A*

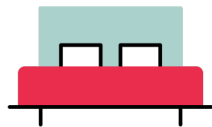
The small hotels with big heart.

You'll find our budget boutique hotels in super central locations. We offer brilliant basics, and local links to help you live your best life when you're away from home.

Our room sizes range from 10-14 sqm, with Queen size beds. Our room types include Double, Twin, and Accessible.



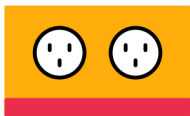
Central Locations



Five Star Beds



Mood Lighting



Sockets aplenty



Fast & Free Wifi



Delightful Hosts



# OUR LOCATIONS



Canary Wharf



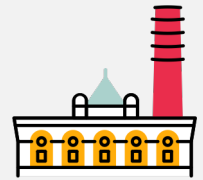
Kensington



Kings Cross



Liverpool Street



Shoreditch



Paddington



Westminster



Dublin



Edinburgh



Glasgow

London Ireland Scotland

# BREAKFAST

A hot and cold breakfast buffet is served daily in our Dublin, Edinburgh, Glasgow, Kings Cross, Liverpool Street, Paddington, Shoreditch, and Kensington hotels.

Canary Wharf and Westminster do not currently have food and beverage spaces.

Our breakfast menu includes options for vegetarian, vegan, and gluten-free diners. There are pastries both sweet and savoury, a selection of cereals, yogurts, fresh fruit, hardboiled eggs, rolls and cheeses, jams, and seasonal surprises. Coffee, tea and fruit juices are also included.

Take-away bags are available for guests in a hurry!



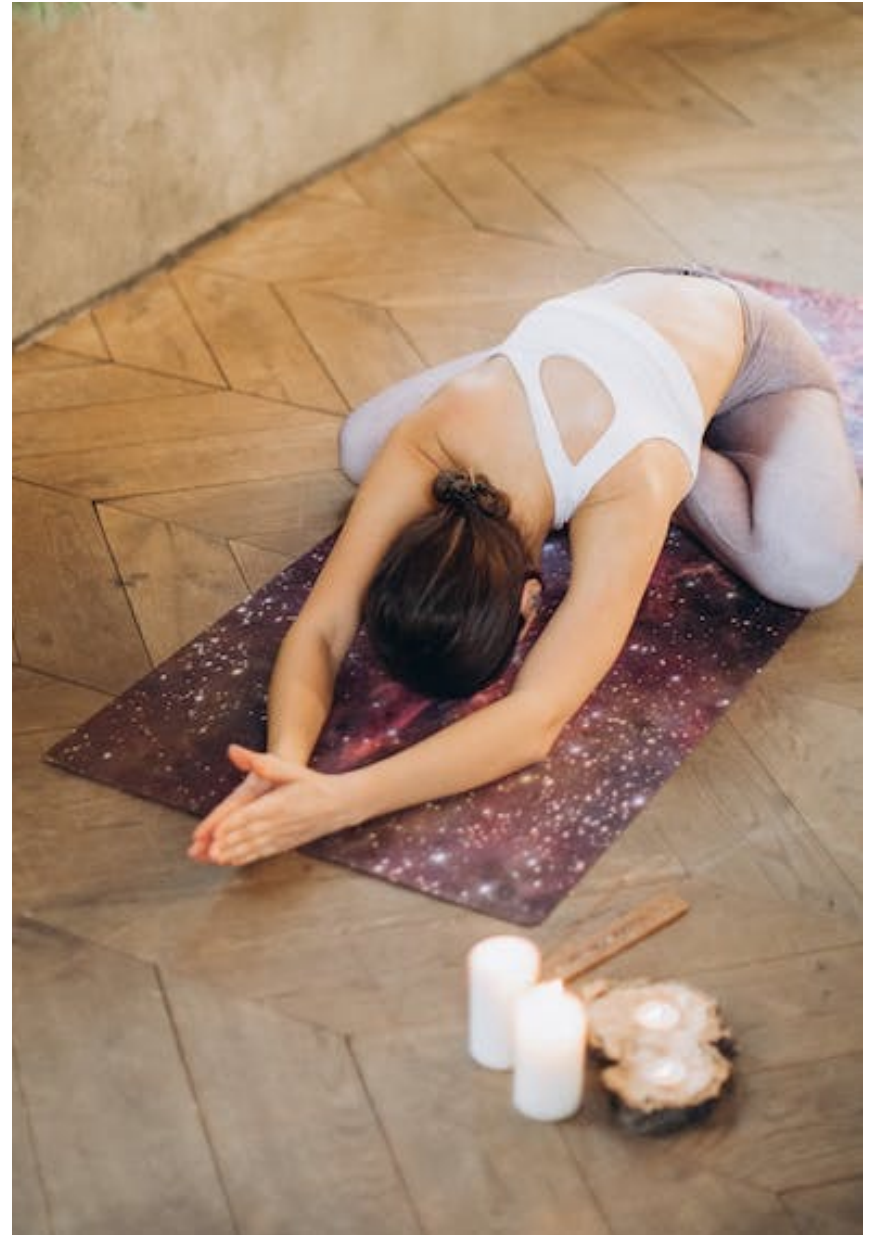
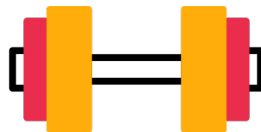


# WELLNESS

You don't have to miss your workouts when you travel!

Our Liverpool Street, Shoreditch and Paddington hotels offer complimentary access to a local gym to guests.

Point A also has a partnership with BODDY, a portal that offers discounts from 20% on one or five day pass packs for a range of fitness classes and gyms all around London.



# LONDON

## Canary Wharf

Point A Canary Wharf is set over two buildings, located across a cobbled square. Reception sits in the main building, with teams waiting 24 hours a day to welcome you and tea and coffee available.

All bedrooms are ensuite and feature a clean, airline vibe, and look great with our signature mood lighting.

### Location:

**21 Hertsmer Road West, London E14 4AS.**

The hotel sits in the heart of Docklands, in a peaceful spot, a short walk from both Canary Wharf and the Isle of Dogs.

### Transport Links

- ⇒ Canary Wharf station - .6km
- ⇒ Poplar DLR - 0.6km
- ⇒ Westferry DLR - 0.48km
- ⇒ London City Airport – 15 mins by taxi, 20 mins by DLR



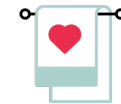
Air Con



Hair Dryer



Safe



Towels & Toiletries



Smart TVs



Ironing Room



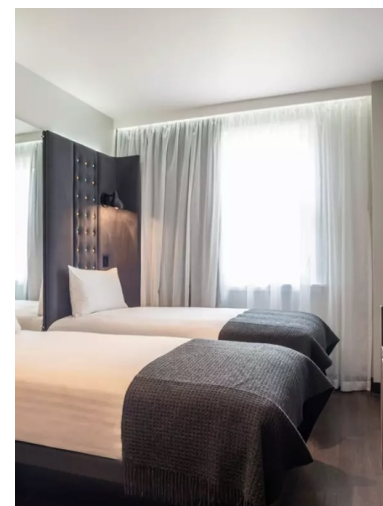
Mood Lighting

# LONDON

## Kensington

One of our newest hotels, Point A Kensington is full of soft seating, fireplaces and cozy nooks to read, work and relax.

Decorated in restful grey hues, there are a variety of bedroom types on offer in this hotel. Choose from windows, skylights, or without window for proper peace and quiet.



### Location:

42 Cromwell Rd, London SW5 9QL

Convenient for Olympia, travel to Heathrow airport, and visiting key West London destinations in Kensington, Holland Park and Hyde Park.

### Transport Links

- ⇒ Earls Court - 0.3 km
- ⇒ Gloucester Road - 0.7 km
- ⇒ High Street Kensington - 0.7 km
- ⇒ South Kensington - 1.1 km



Air Con



Safe



Smart TVs



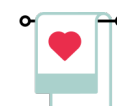
Mood Lighting



Guest Lounges & Work Areas



Hair Dryer



Towels & Toiletries



Ironing Room



Breakfast



Café / Bar

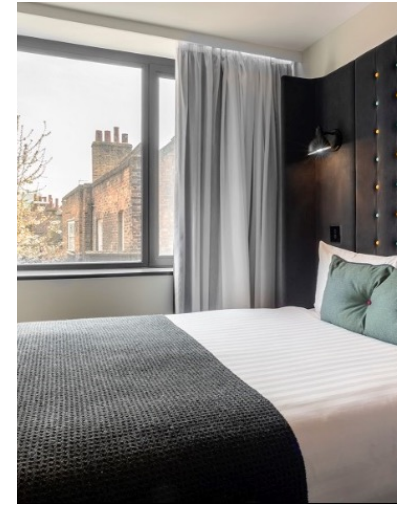


# LONDON

## *Liverpool St.*

Point A Liverpool Street has a wide range of lounge and work areas to suit your mood. It also boasts a secret garden! Perfect for breakfast when the weather is fine.

The bedrooms are decorated in restful grey hues, with both rooms with views or windowless rooms available for those looking for a quieter stay.



### Location:

**13-15 Folgate Street, London E1 6BX**

Tucked away up a characterful street, Bishopsgate, Broadgate, Spitalfields and Brick Lane are all just around the corner.

### Transport Links

- ⇒ Liverpool Street - 0.5 km
- ⇒ Moorgate - 1 km
- ⇒ Shoreditch High Street - 0.4 km



Air Con



Safe



Smart TVs



Mood Lighting



Guest Lounges & Work Areas



Free Local Gym



Hair Dryer



Towels & Toiletries



Ironing Room



Breakfast



Café / Bar

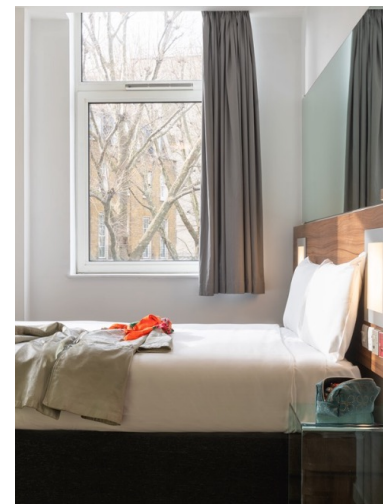


# LONDON

## *Kings Cross*

Clean, comfortable and centrally located, Point A Kings Cross has plenty of places to work quietly, enjoy some dinner, or socialise.

The hotel's bedrooms and public areas were refurbished in March 2023 better than ever!



### Location:

**324 Grays Inn Rd, London WC1X 8BU**

The area is now one of London's best for transport connections, alive with public art and entertainment. Kings Cross's renaissance is why many of the world's tech giants have chosen Kings Cross for headquarters.

### Transport Links

- ⇒ Kings Cross Station - 0.3 km
- ⇒ Euston Station - 1.1 km
- ⇒ St Pancras Int'l Station - 0.3km



Air Con



Safe



Smart TVs



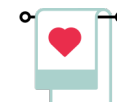
Mood Lighting



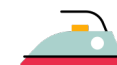
Guest Lounges & Work Areas



Hair Dryer



Towels & Toiletries



Ironing Room



Breakfast



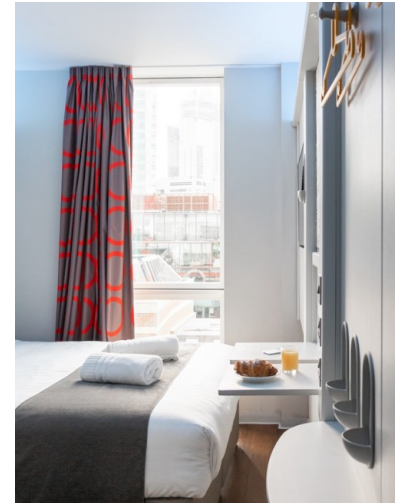
Café / Bar

# LONDON

## Shoreditch

Point A Shoreditch boasts an atrium with glass roof and fancy night lights. The space is perfect for working, dining and socialising with pals and colleagues.

The bedrooms are in a clean, airline style and look great with our signature mood lighting. There are some basement rooms available for those looking for peace and quiet.



### Location:

8-10 Paul Street, London EC2A 4JH

Point A Shoreditch is just a stone's throw from Liverpool Street station, Moorgate, Old Street and the City.

### Transport Links

- ⇒ Old Street - 0.5km
- ⇒ Moorgate - 0.6km
- ⇒ Liverpool Street - 0.6km
- ⇒ Shoreditch High Street - 0.8km



Air Con



Safe



Smart TVs



Mood Lighting



Guest Lounges & Work Areas



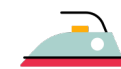
Free Local Gym



Hair Dryer



Towels & Toiletries



Ironing Room



Breakfast



Café / Bar



# LONDON

## Paddington

Point A Paddington is in our newest design, with plenty of lounge and work areas to escape from the hustle and bustle.

### Location:

41 Praed St, London W2 1NR

With Hyde Park on one side and Regent's Canal on the other, Paddington is your perfect London launch pad.

### Transport Links

⇒ Paddington - 0.4 km

⇒ Edgware Road - 0.3 km



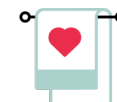
Air Con



Hair Dryer



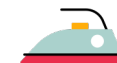
Safe



Towels & Toiletries



Smart TVs



Ironing Room



Mood Lighting



Breakfast



Guest Lounges & Work Areas



Café / Bar



Free Local Gym

# LONDON

## Westminster

Point A Westminster does not have any guest lounge areas, but we do run the traditional British pub located next door to the hotel, called the Horse & Stables.

Bedrooms in this hotel are tidy and minimalist, many feature mood lighting. This is our one of our most in demand locations and also our only hotel with single bedrooms.

### Location:

**118-120 Westminster Bridge Rd, London SE1 7RW**

The capital's most famous landmarks are literally on your doorstep in this location: Southbank, the Millenium Wheel, Houses of Parliament and much more.

### Transport Links

- ⇒ Lambeth North - 1 min Walk
- ⇒ Waterloo - 0.6 km
- ⇒ Southwark - 0.8 km
- ⇒ Waterloo East - 0.6 km



Air Con



Safe



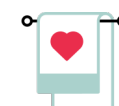
Smart TVs



Mood Lighting



Hair Dryer



Towels & Toiletries



Ironing Room

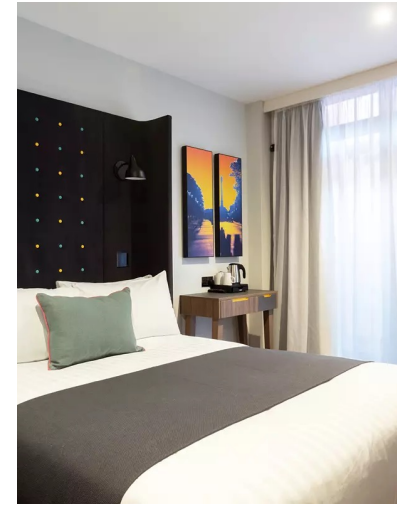


# DUBLIN

## *Parnell St.*

Point A Dublin opened in 2022 and has buckets of guest lounge and workspaces. Another highlight is Moore Lane, the first cafe bar in the Point A family. Enjoy a pint of Guinness as soon as you arrive!

The bedrooms have floor-to-ceiling windows, many with fantastic views over downtown Dublin.



### Location:

**17-19 Moore Lane, Dublin, D01 H6K3**

Dublin is easy to get around on foot. Our hotel is located in Dublin North, fifteen minutes' walk to the River Liffey, Temple Bar district and Trinity College.

### Transport Links

- ⇒ Connolly Station - 1.6km
- ⇒ Busáras Central Station - 1km
- ⇒ Dublin Airport - 9.6km
- ⇒ Dublin Port - 4.6km



Air Con



Safe



Smart TVs



Mood Lighting



Guest Lounges & Work Areas



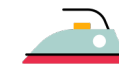
In Room Telephone



Hair Dryer



Towels & Toiletries



Ironing Room



Breakfast



Café / Bar



Kettle

# SCOTLAND

## Edinburgh

Point A Edinburgh has a lovely relaxed atmosphere. There's plenty of cozy seating, social seating and quiet corners to work.

The hotel has no parking on site, but we have arrangements with a car park 5 minutes walk from the hotel for discounted rates.

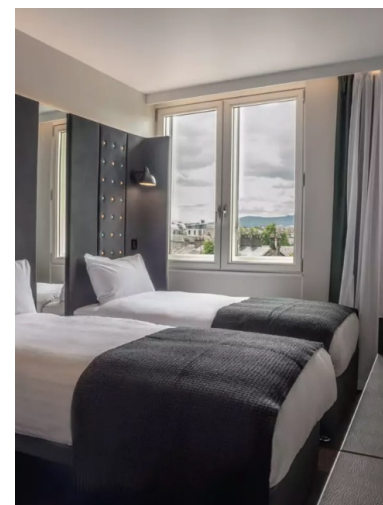
### Location:

**152 Morrison St, Edinburgh EH3 8EB**

A short walk from Haymarket Stadium, where you'll find trains to the airport, routes to Glasgow as well as the South.

### Transport Links

- ⇒ Haymarket Station - 0.5 km
- ⇒ Edinburgh Waverley - 1.9km
- ⇒ Edinburgh Airport - 30 minutes via tram
- ⇒ Thistle Parking - 5 mins walk



Air Con



Safe



Smart TVs



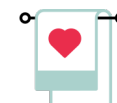
Mood Lighting



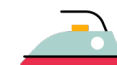
Guest Lounges & Work Areas



Hair Dryer



Towels & Toiletries



Ironing Room



Breakfast



Café / Bar

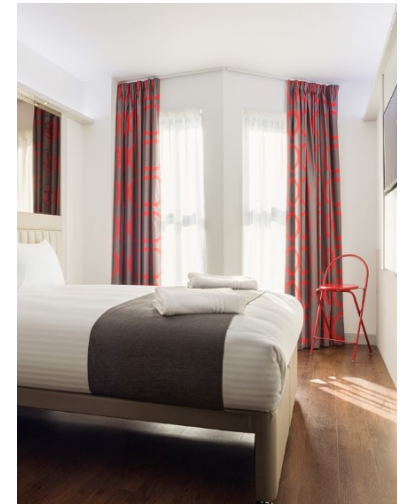
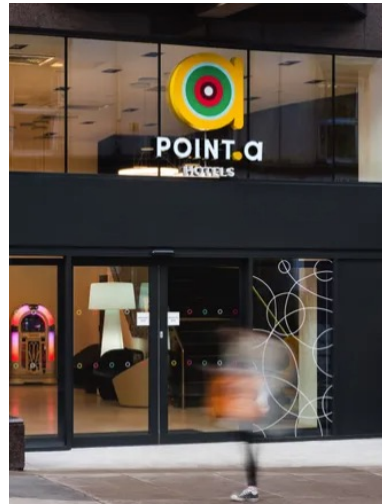


# SCOTLAND

## Glasgow

Point A Glasgow features guest work areas with a floor-to-ceiling glass atrium that's perfect for dining, working and socialising.

The bedrooms feature a clean, airline vibe and look great with our signature mood lighting. Basement rooms are available for those seeking perfect peace and quiet.



### Location:

80 Bath St, Glasgow G2 2EN

The hotel is located in the heart of the shopping, dining and entertainment district. The Glasgow School of Art and George Square are also a few minutes' walk.

### Transport Links

- ⇒ Queen Street - 0.5 km
- ⇒ Glasgow Central - 0.5 km



Air Con



Safe



Smart TVs



Mood Lighting



Guest Lounges & Work Areas



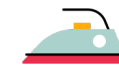
Free Local Gym



Hair Dryer



Towels & Toiletries



Ironing Room



Breakfast



Café / Bar

