

# geo.

## Designed with TMCs, for TMCs

Imagine a duty of care system that truly delivers on the needs of a TMC. An intuitive user interface containing all traveller locations, up to date risk information, country level health updates and real-time security alerts.

In Geo you can view all of your travellers' current locations and future travel plans in one place, or provide your clients with access so that they can do just the same on demand.

The platform updates every traveller's location via the passive tracking of itinerary data, linking events from every trip to create historic and future timelines.

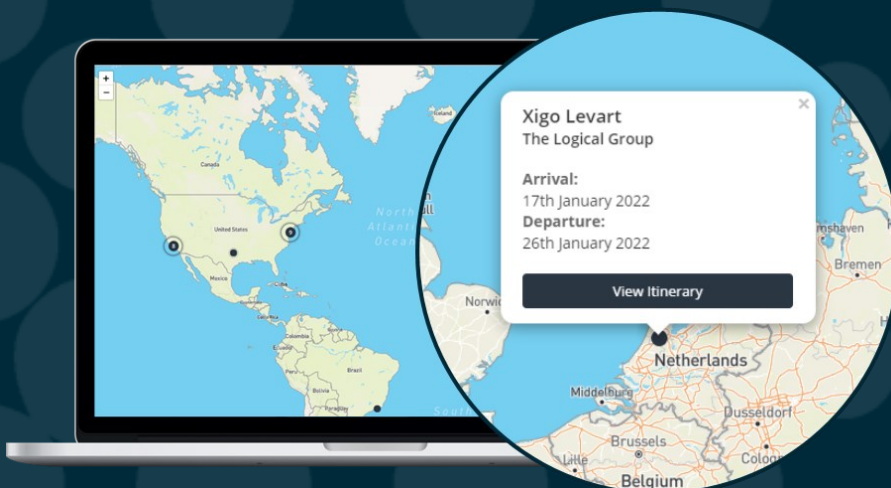
## A Fully Integrated Solution

If you are an existing user of Analytix, Geo already contains all of your travellers' itinerary data and can be activated without any complications or the need to integrate additional systems or change processes.

Geo is directly accessible from within the Analytix platform, meaning there is no need for users to log in to a separate system.

If you are new to Travelogix we can integrate your data directly from your mid/back office platform, GDS or other data source and provide you with the same real-time features.

Every user of Geo can also be assured of the latest and most up to date security alerts and country risk information provided by our partners at Safeture.



analytix

evolvi®



TRAVELPORT

SAFETURE®

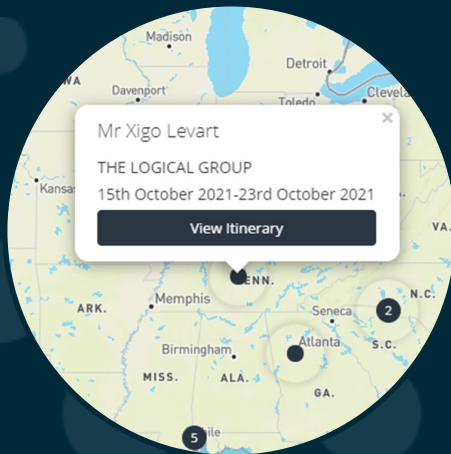
## Itinerary Tracking

### Unintrusive and reliable

Geo provides you with real-time updates of traveller locations based on the passive tracking of their itinerary data.

Geo can also tell you if travellers are on the move and passing through a region, or whether they have arrived at their final destination.

Understanding where your travellers are meant to be, without the need for expensive and intrusive GPS tracking, is a crucial part of a fully realised duty of care policy and will help you make better travel related decisions.



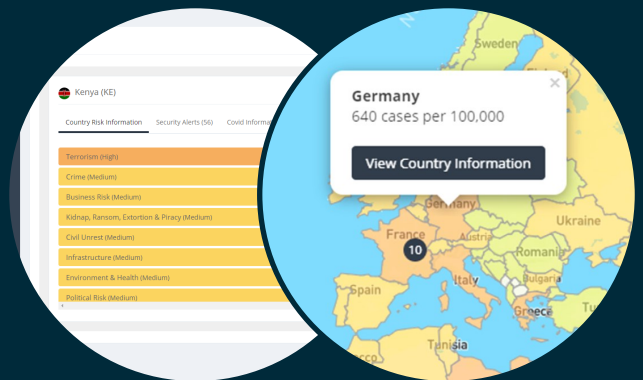
## Security & Risk Data

### Real-time on-demand

Understanding the risks associated with a destination is the primary reason why corporates deploy a duty of care policy.

In partnership with Safeture, Geo delivers real-time security alerts and detailed map-overlays highlighting risks, incidents and global health concerns, such as Covid-19, for every country worldwide.

Geo provides on-demand access to all destination information relevant to you, your travellers and their trip, resulting in better informed and more assured travellers.



## Integrated Contact Details

### For when it matters most

Geo delivers both itinerary data and contact details all in one place.

Efficiencies are key when it comes to duty of care, and Geo has all the detail you need to efficiently manage a crisis. Working within a slick and accurate platform will save you time sourcing the information that is relevant when it matters most.

## TMC & Client Facing

### A 2-way command centre

In Geo, we have developed a platform that will be central to both the TMC and the corporate.

A crucial platform that will form the basis of any duty of care led travel management programme, Geo is intuitive whilst being specifically designed for TMCs to provide the 'arm around the shoulder' that travellers and corporates deserve.

# Stay Alert & In Control

## Subscribe to Live Bulletins & Digests

In an age where security and communication is key, especially within the travel space, our GeoAlert module is on hand to empower you with live security alerts that affect your travellers who on the road right now or have upcoming trips to affected locations.

The subscription based module allows you to determine and specify exactly the types of automated alerts you want to receive and when.

Whether you want to receive comprehensive live information relating to developing security for locations where you have travellers right now, or a more concise daily summary that provides a simplified overview of destinations where you have travellers, or are due to have travellers – we have you covered with our Alert Bulletins and Daily Digests.

## Alert Bulletins

### Live & Up-to-Date

Alert Bulletins will be sent to subscribers as soon as we receive an alert for a country where you have travellers now, or within the next 15 days.

## Custom Watchlists

### Build Your Own

Build your own Watchlists for countries or locations of strategic interest to you and your business and don't miss an alert that affects that location or region.

## Daily Digests

### Be Informed Ahead of Time

Daily Digests will be sent out each day and will contain a summary of every country the subscriber has travellers in, or due to travel to, within the next 15 days.

## One Click Access

### Directly from Alerts

If you see an alert that requires immediate attention, you can access the Geo platform and identify affected travellers directly from the alert with a single click.

