




London Hilton
ON PARK LANE

Welcome to your new luxurious home away from home

Located in the heart of Mayfair, London Hilton on Park Lane was the first Hilton to open within the UK and is close to all that London has to offer, including theatres, Royal Parks and world-famous landmarks. Find us overlooking Hyde Park, and half a mile from Green Park and Buckingham Palace, and only one tube stop from Big Ben and the London Eye. Soaring high above Park Lane, the hotel is famed for its unparalleled five-star luxury. With 453 spacious guest rooms, including 56 suites and a Queen Elizabeth Suite, there is something for all.



The Queen Elizabeth Suite

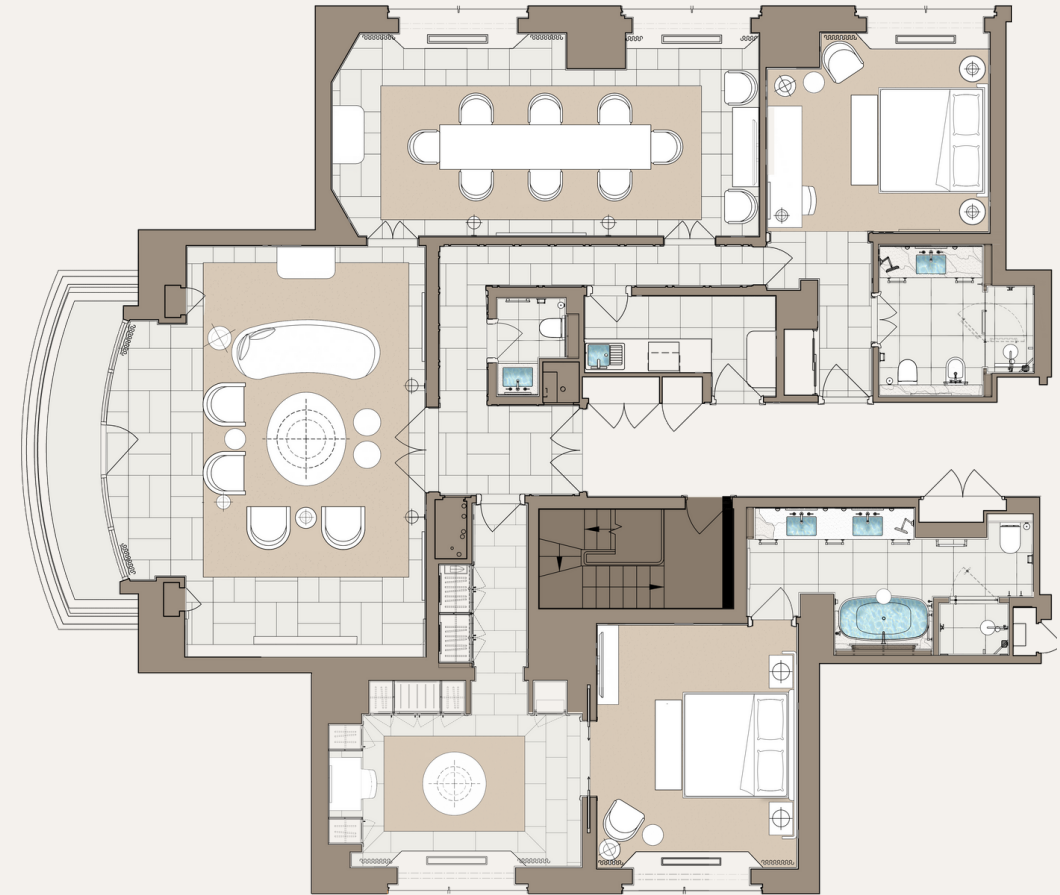
From a private balcony on the 27th floor, enjoy spectacular views over Hyde Park and West London. Inspired by Queen Elizabeth and the Duke of Wellington for their equestrian skills, the design of the suite is strongly influenced by the elegant style of their uniform with deep blues and golds to represent royalty.



Key Features | Queen Elizabeth Suite

Size: 125sq m/ 1,937sq ft

- 27th floor
- Buckingham Palace and Hyde Park views
- King size bed
- Spacious living area with private balcony
- Dressing room
- Large bathroom, double basin, bidet, and walk-in shower
- Guest bathroom
- Dining room for 10 guests
- Butler service available
- Kitchenette
- Motorised TV
- Complimentary Wi-Fi
- Executive Lounge access
- Connecting Executive Room



King Charles Suite

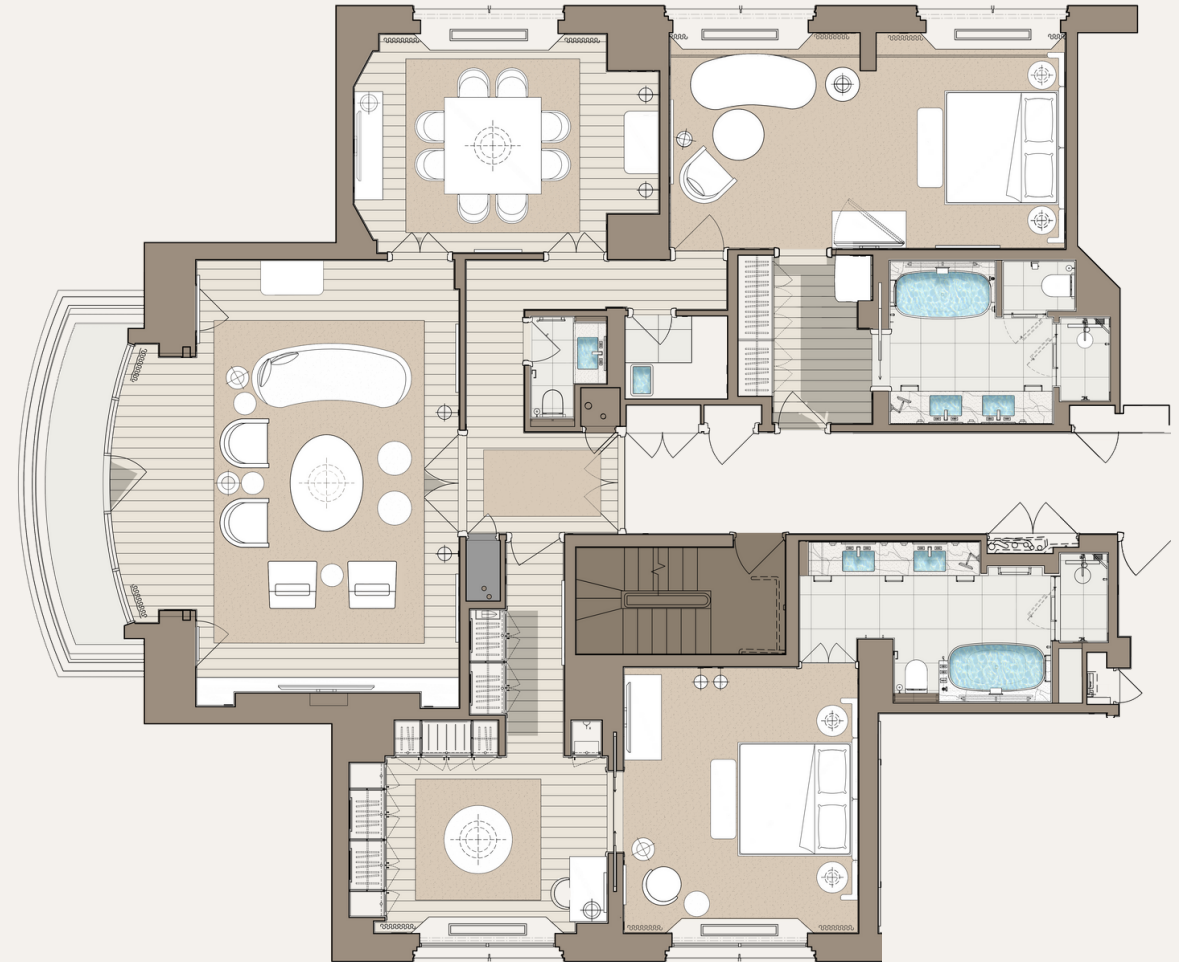
Tailor-made comfort. Inspired by Saville Row, an influential area in the 60's known for its high-end bespoke tailor shops, this suite boasts style and elegance with views overlooking Buckingham Palace. The King Charles Suite also offers an elegant setting for private dining and events.



Key Features | King Charles Suite

Size: 185sq m/1,991sq ft

- 26th floor
- Buckingham Palace and Hyde Park views
- Dressing room
- King size bed
- Motorised TV
- Spacious living area with private balcony
- Large bathroom, double basin, and walk-in shower
- Guest bathroom
- Dining room for 8 guests
- Butler service available
- Kitchenette
- Motorised TV
- Complimentary Wi-Fi
- Executive Lounge access
- Connecting Executive Room



Signature Suites

Windsor Suite | Duke of Edinburgh Suite | Buckingham Suite | Kensington Suite

As we move up to the 27th floor we wanted our guests to experience a more traditional feel with equestrian and natural detailing as well as with elements inspired by Hyde Park. The King's Horse Guard can often be seen parading in the park offering a unique view.



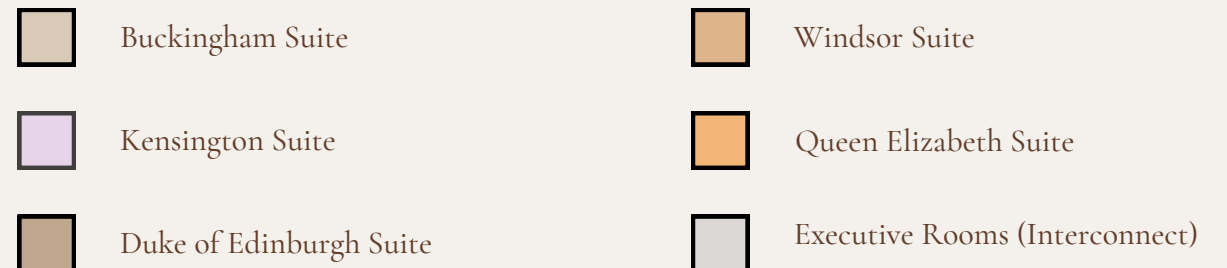
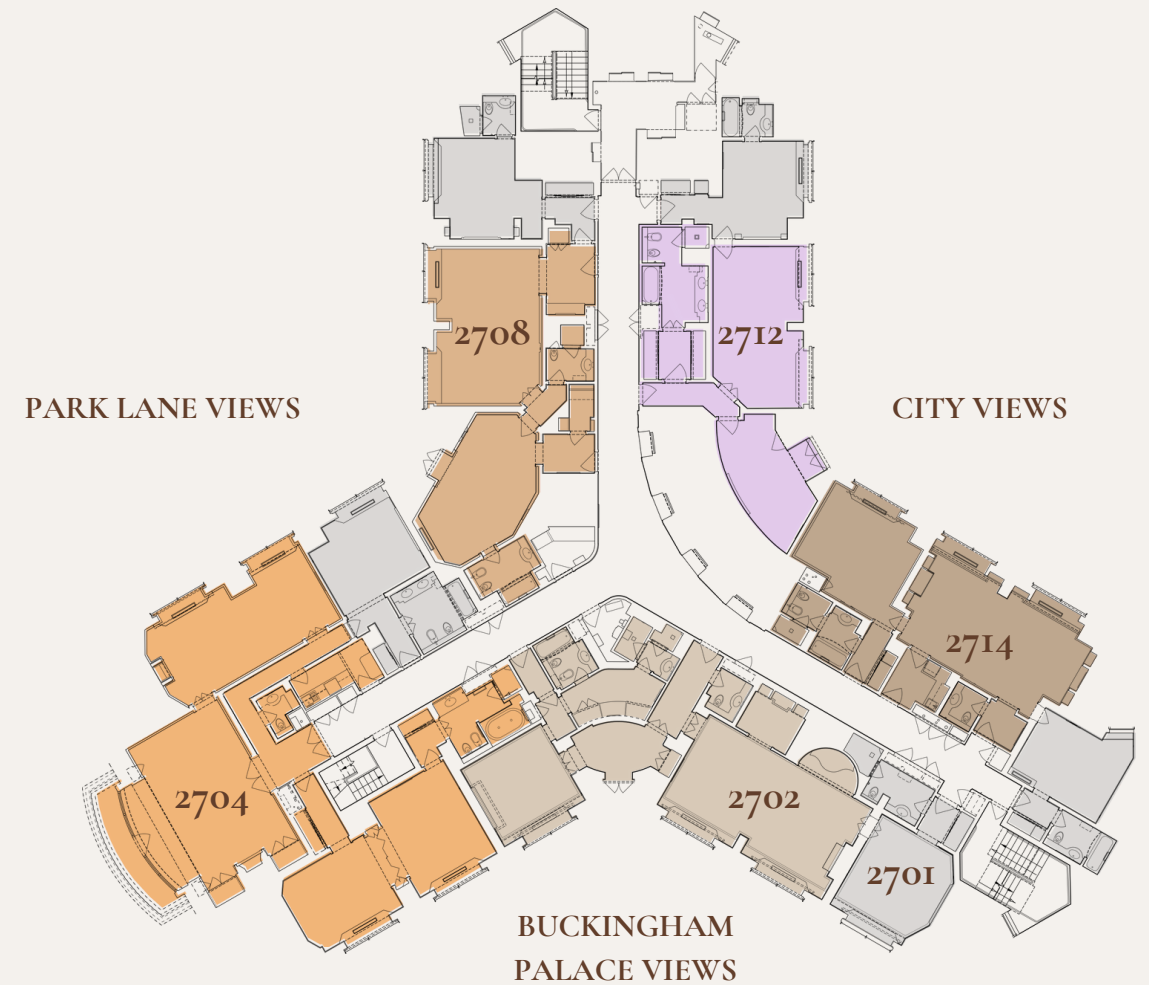
Key Features | 27th Floor

- Hyde Park or city views
- King size bed
- Living room with dining area for 4-6 guests
- Spacious wardrobe/ dressing area in selected suites
- Bathroom with bidet
- Butler service available*
- Complimentary Wi-Fi
- Executive Lounge access
- Connecting Executive Room

Buckingham Suite has a dressing room, guest bathroom and balcony

Duke of Edinburgh Suite has a kitchenette and guest bathroom

Kensington Suite has a balcony and double basin bathroom



Signature Suites

London Suite | Coronation Suite | Oxford Suite | Cambridge Suite

The 26th floor suites are strongly influenced by Sloane Square, famously known for its fashion scene and style in the 'swinging 60's'. Key features include the monochrome patterns with a bursts of colour, such as ochre yellow. This floor consists of five suites and five Executive Rooms that can be taken together as the whole floor for complete privacy.



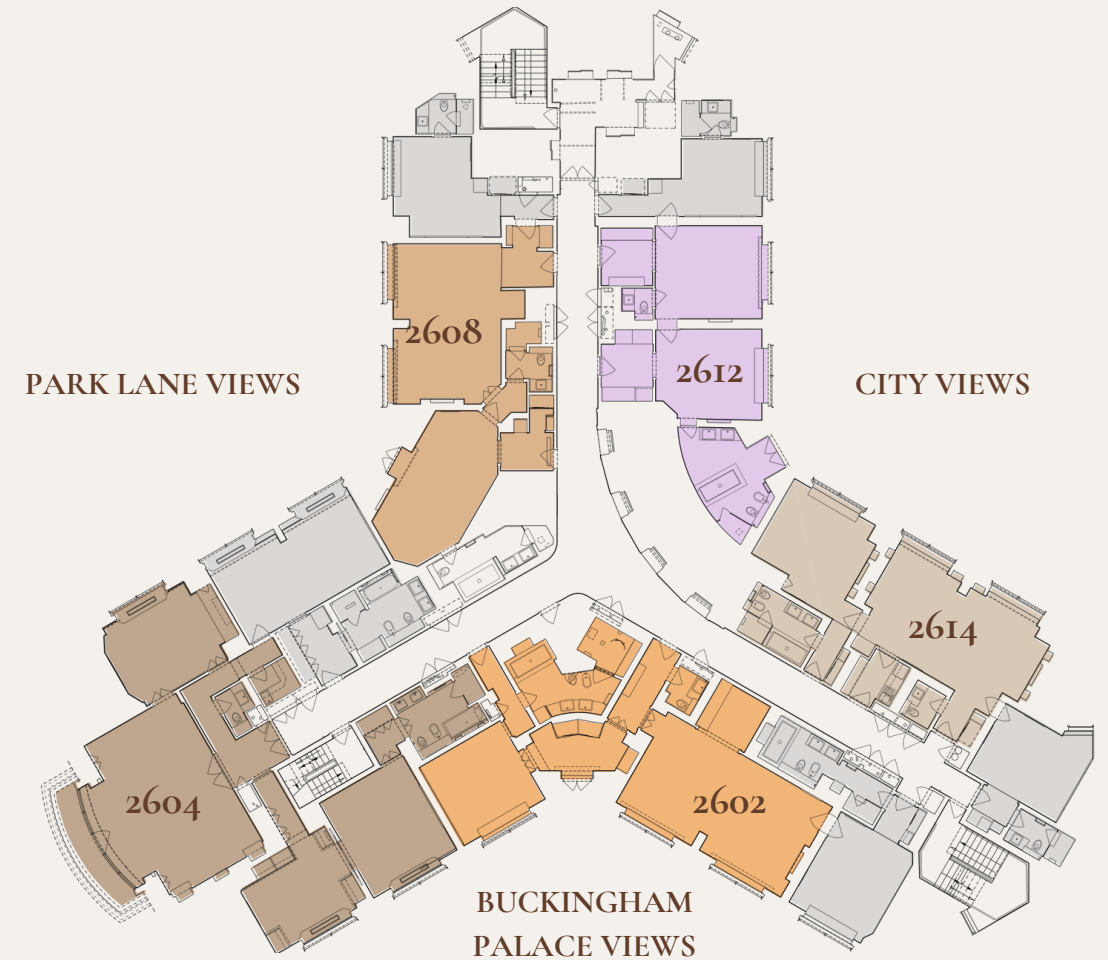
Key Features | 26th Floor







- Buckingham Palace, Hyde Park, Mayfair or city views
- King size bed
- Living room with dining area for 6 guests
- Spacious wardrobe/ dressing area in selected suites
- Bathroom with bidet
- Butler service available*
- Complimentary Wi-Fi
- Executive Lounge access
- Connecting Executive Room

Coronation Suite has a kitchenette, pantry, bidet and separate bathroom

Cambridge Suite has a balcony, bidet and separate bathroom

Oxford Suite has a dressing room, balcony, pantry, steam room, bidet and separate bathroom



| | | | |
|---|--------------------|---|--------------------------------|
|  | Coronation Suite |  | Cambridge Suite |
|  | London Suite |  | Oxford Suite |
|  | King Charles Suite |  | Executive Rooms (Interconnect) |

Park Lane & Mayfair Suites

Blue skies above Hyde Park. A palette of pale blues and warm timber create a calm, contemporary scheme full of freshness and light. The carpet design was inspired by the play of light on the Serpentine to reflect the blue skies above.



Key Features | Park Lane Suite

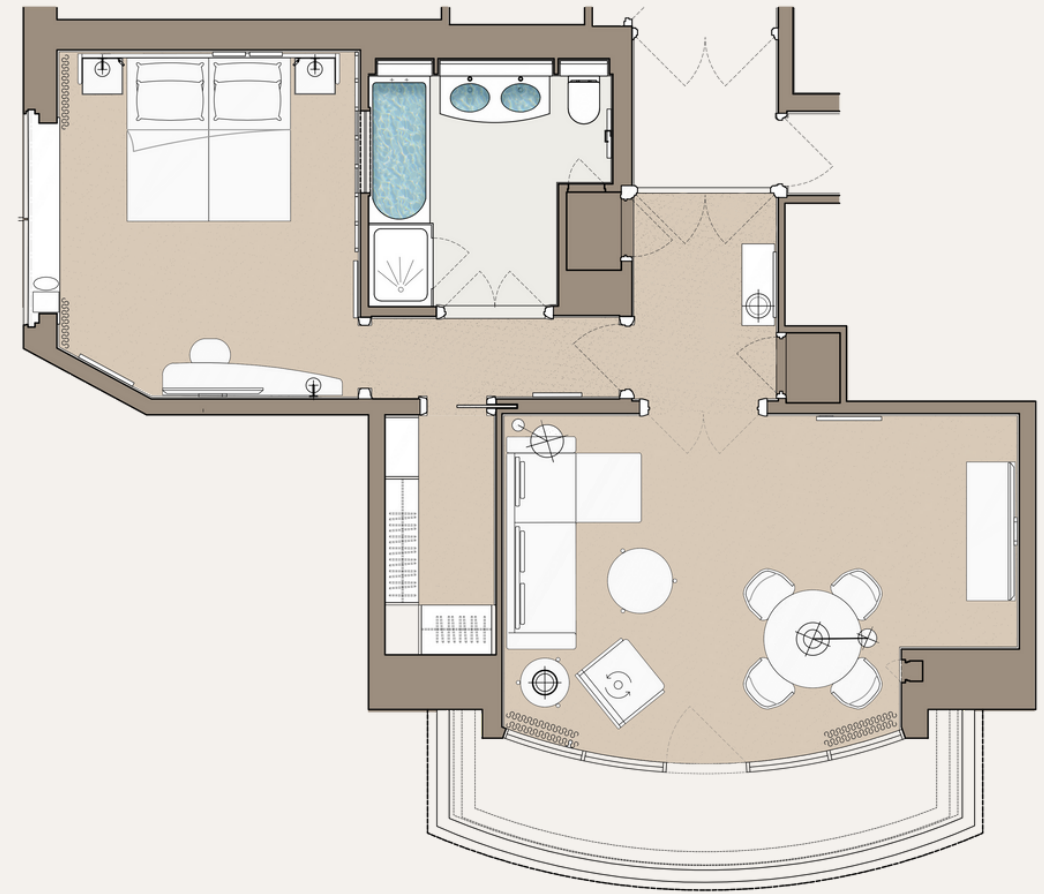
Size: 65sq m/ 699sq ft

Floors 5 - 8: Deluxe Park Lane Suites

Floors 9 - 18: Superior Park Lane Suites

Floors 19 - 24: Executive Park Lane Suites

- Private balcony
- Hyde Park and Park Lane views
- Floor to ceiling windows
- King size bed
- Walk-in wardrobe
- Executive Lounge access



Key Features | Mayfair Suite

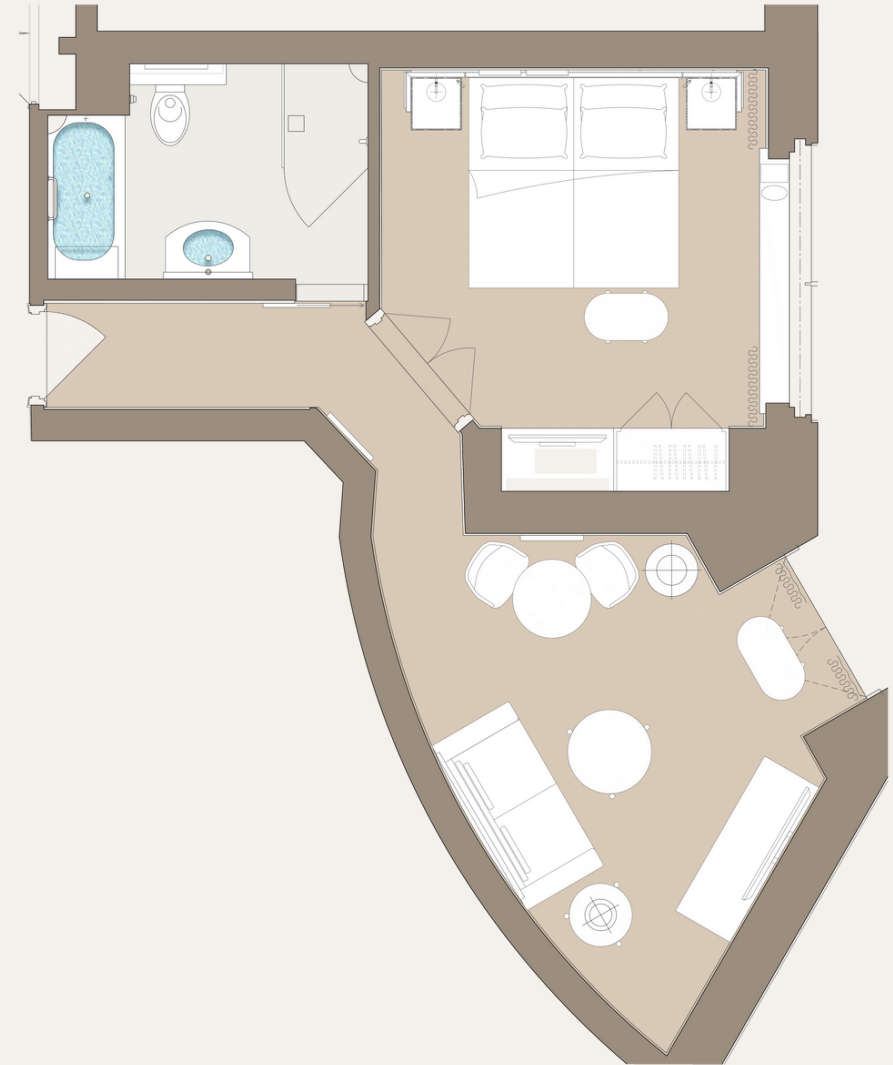
Size: 42sq m/135 sq ft

Floors 5 - 8: Deluxe Mayfair Suites

Floors 9 - 18: Superior Mayfair Suites

Floors 19 - 24: Executive Mayfair Suites

- Private balcony
- Hyde Park and Park Lane views
- Separate living room
- Window seat
- King size bed
- Executive Lounge access



Timeless Class, Modern Luxury



Revery Bar

A joyful take on modern London living, celebrating artistry and craft. Urban living, effortlessly blending work and play, presented with flair.



Ground Floor Brasserie

Modern British eating & drinking in the heart of London. Championing an elevated local, seasonal and responsible approach suited to contemporary lifestyles.

Contact Us

Reservations Team

📞 +44 (0)207 493 8000

✉️ reservations.parklane@hilton.com

Follow our journey

📷 [@londonhiltonpl](https://www.instagram.com/londonhiltonpl)

