



HILTON LONDON WEMBLEY

W
WALDORF ASTORIA

LXR

CONRAD

canopy

Signia
by Hilton

Hilton

CURIO
COLLECTION

DOUBLETREE

TAPESTRY
COLLECTION

EMBASSY
SUITES

TEMPO

MOITO

Hilton
Garden Inn

Hampton

tru

HOMWOOD
SUITES

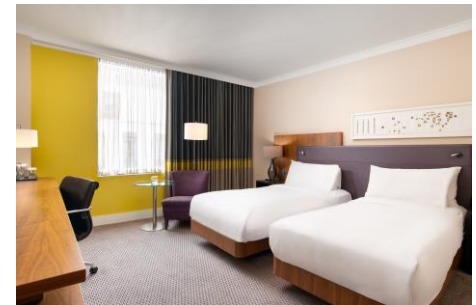
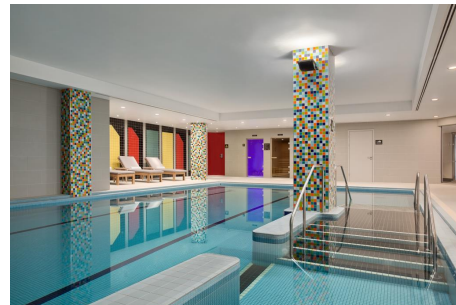
HOME
SUITES 2

Hilton
Grand Vacations

Hilton
HONORS

HILTON LONDON WEMBLEY

In a nutshell



LIFE IN WEMBLEY

Hilton

@wembleyparkldn



The Hive (15 min)

Wembley Park Station



Yellow Car Park



Pink Car Park



Heathrow Airport (40 min)

SSE Hilton

Golden Car Park

LDD

Wembley Stadium



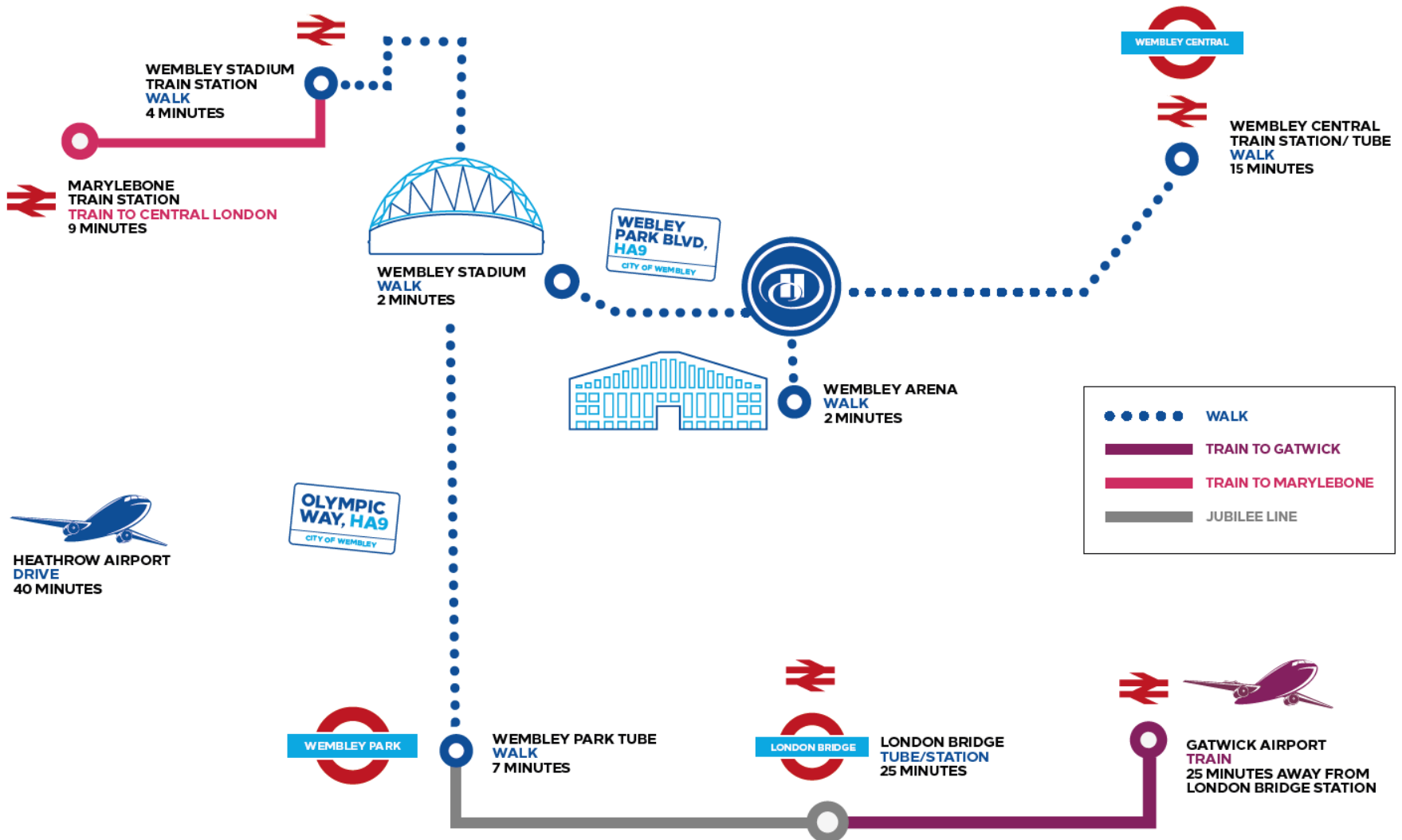
Wembley Stadium Station



HILTON WEMBLEY



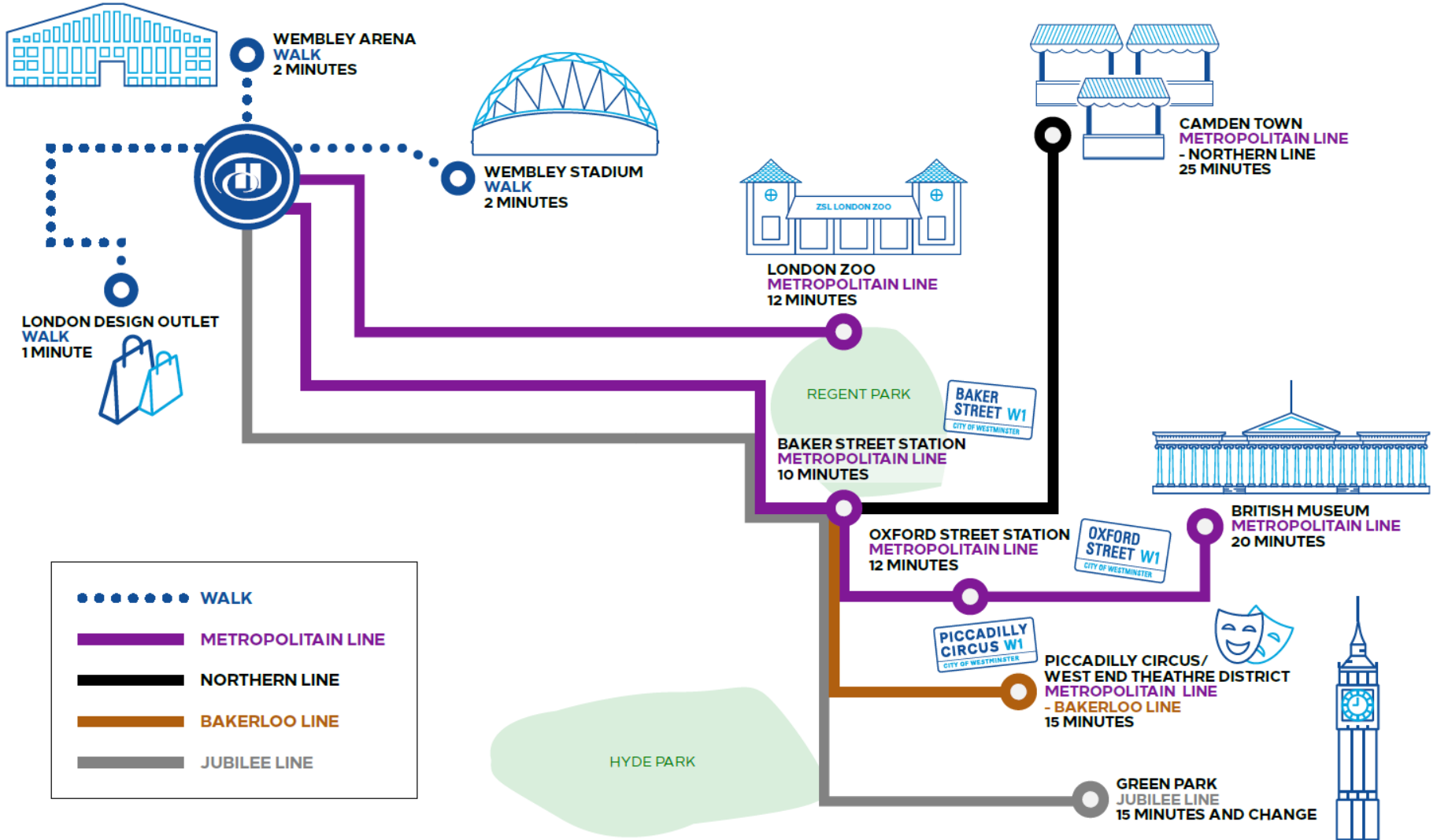
Getting to us from abroad & UK



HILTON WEMBLEY



Getting to us from London



HILTON WEMBLEY

At a glance



HILTON WEMBLEY



At a glance

Hilton London Wembley is located in the north of London, right next to the famous Wembley Stadium & the SSE Arena.

- 361 bedrooms
- 24h gym, indoor pool, steam room and sauna
- Main restaurant for up to 300 guests
- 11 meeting rooms & a ballroom for up to 900 guests
- Sky Bar 9 with terrace space (available for exclusive hire), Icons Bar
- Great connection to Heathrow airport (30-45 min) and central London (12 min to Baker Street)
- Parking for hotel guests in Gold Car Pak

9	Sky Bar & Executive Lounge
8	Bedrooms
7	Bedrooms
6	Bedrooms
5	Bedrooms
4	Meeting space & Bedrooms
3	Grand Ballroom, Association Restaurant, Icons Bar
2	Gym & Spa
0	Entrance & Hotel Lobby



HILTON WEMBLEY

At a glance



- 9 Sky Bar, Lounge & Terrace
- 8 Executive Bedrooms
- 7 Bedrooms
- 6 Bedrooms
- 5 Bedrooms
- 4 Meeting space & Bedrooms
- 3 Grand Ballroom, Association Restaurant, Icons Bar
- 2 Gym & Spa
- 0 Entrance & Hotel Lobby



CAPACITY CHART



Meeting Rooms	Total Sq m	Room Size	Classroom	Theatre	Banquet 10's	Cabernet 8's	Cabernet 10's	Reception	Boardroom	Ushape	H-Square
Ballroom 1	231	21x11x4.5	172	300	180	144	180	300	N/A	N/A	N/A
Ballroom 1&2	462	21x22x4.5	320	600	360	288	360	600	N/A	N/A	N/A
Ballroom 2	231	21x11x4.5	172	300	180	144	180	300	N/A	N/A	N/A
Ballroom 2&3	462	21x22x4.5	320	600	360	288	360	600	N/A	N/A	N/A
Ballroom 3	231	21x11x4.5	172	300	180	144	180	300	N/A	N/A	N/A
Ballroom	693	21x33x4.5	500	900	550	432	550	900	N/A	N/A	N/A
Boardroom	39.36	8.2x4.8x2.48	NA	NA	NA	NA	NA	NA	14	N/A	N/A
Meeting Room 1	26.24	6.4x4.1x2.48	15	22	10	NA	NA	20	12	14	N/A
Meeting Room 1&2	52.48	12.8x4.1x2.48	22	42	20	21	17	40	22	26	22
Meeting Room 1,2&3	78.72	19.2x4.2x2.48	32	70	50	35	50	60	32	30	30
Meeting Room 2	26.24	6.4x4.1x2.48	15	22	10	NA	NA	20	12	12	12
Meeting Room 3	26.24	6.4x4.1x2.48	15	22	10	NA	NA	20	14	14	N/A
Meeting Room 4	26.24	6.4x4.1x2.48	15	22	10	NA	NA	20	14	14	N/A
Meeting Room 5	53.12	8.3x6.4x2.48	30	45	30	21	30	30	20	23	22
Meeting Room 5&6	106.24	16.6x6.4x2.48	60	90	60	49	70	90	46	47	N/A
Meeting Room 6	53.12	8.3x6.4x2.48	30	45	30	21	30	30	20	23	22
Meeting Room 7	53.12	8.3x6.4x2.48	30	45	30	21	30	30	20	23	22
Meeting Room 7&8	106.24	16.6x6.4x2.48	60	60	60	49	70	90	46	47	N/A
Meeting Room 8	53.12	8.3x6.4x2.48	30	45	30	21	30	30	20	23	22
Meeting Room 9	26.24	6.4x4.1x2.48	15	22	15	NA	NA	200	12	14	N/A
Meeting Room 9&10	52.48	12.8x4.1x2.48	40	42	24	21	30	40	22	22	22
Meeting Room 10	26.24	6.4x4.1x2.48	15	22	15	NA	NA	200	12	44	N/A

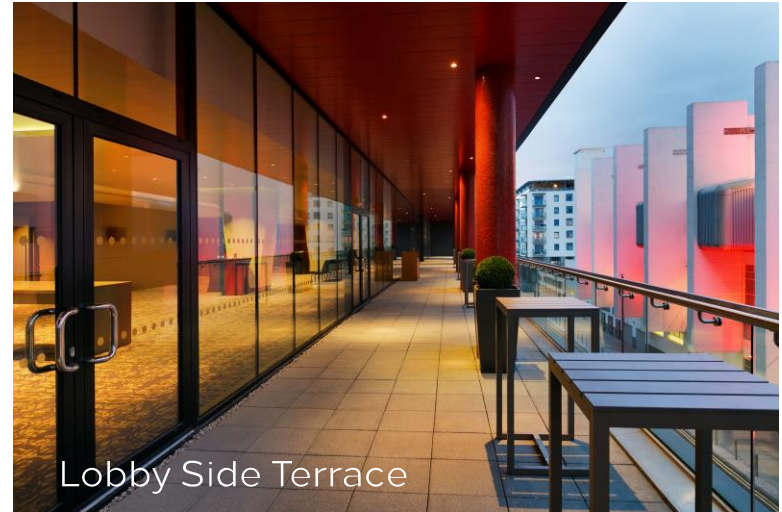
GRAND BALLROOM FOYER



Pre-function area



Lobby Entrance



Lobby Side Terrace



Area for Coffee Breaks & Dinner Drinks

ICONS BAR



GRAND BALLROOM

Section 1



GRAND BALLROOM



Sections 1+2+3 – Theatre setup, facing main screen in Section 3



GRAND BALLROOM



Sections 1+2+3 – Cabaret setup, facing main screen in Section 3



GRAND BALLROOM

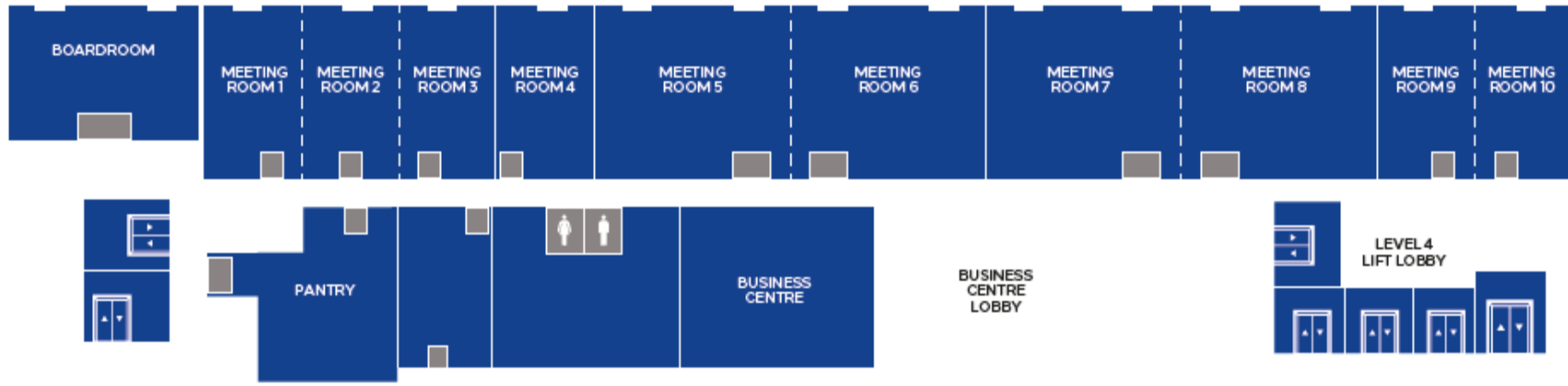
Sections 1+2+3 for Dinner



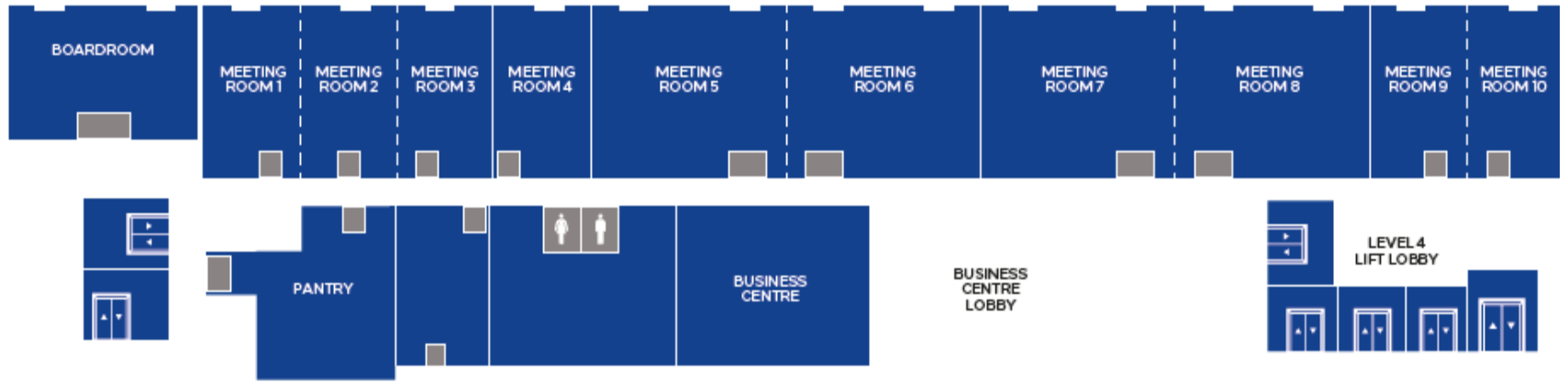
ASSOCIATION RESTAURANT



4TH FLOOR MEETING ROOMS



4TH FLOOR MEETING ROOMS



4TH FLOOR MEETING ROOMS

Meeting rooms and Business Center Lobby



Meeting Room 9&10



Meeting Room 5&6 / 7&8



Business Centre Lobby



4TH FLOOR MEETING ROOMS



Boardroom



HOTEL BEDROOMS



Info

Room category	Max occupancy	Room size	Bath	Other comments
King Guest Room	3 (2 + 1 extra)	26 sqm	Bathtub	
Twin Guest Room	3 (2 + 1 extra)	26 sqm	Bathtub	
King Deluxe Room	3 (2 + 1 extra)	26 sqm	Bathtub	
Family Guest Room	4 (2+2)	32 sqm	Bathtub	2 king sized beds
Accessible Room	2	26 sqm	Accessible shower	Not guaranteed
Junior Suite	3 (2 + 1 extra)	40 + sqm	Bathtub + Shower	
Corner Suite	2	40 + sqm	Shower	
1 Bedroom Suite	4 (2 + 2 extra)	45 + sqm	Bathtub + Shower	Walk-in wardrobe

- Price per extra bed - £35 per bed, per night
- Baby crib – FOC (free of charge)
- **Executive lounge currently closed – drinks vouchers and room upgrade; update by Sept'21**
- Children up to 18 years old stay free (with existing bedding) when sharing a room with a paying adult on a room only rate. Children 5 years and under enjoy complimentary breakfast from our buffet.

- **Interconnecting rooms** – guaranteed by newest Hilton promotion
 - King Deluxe to King Deluxe
 - King to Queen Accessible
 - King to King Room
 - Twin to Twin room
 - King Executive to King Executive
 - King Executive to Queen Accessible Executive room



Connecting Rooms

HOTEL BEDROOMS

King Guest Rooms & Suites



King Guest Room



Corner Suite – Living Room



King Guest Room – Bathroom



Corner Suite – Bedroom



HOTEL BEDROOMS

King Guest Room – room nr #16



HOTEL BEDROOMS

Corner Suite - room nr #01



HOTEL BEDROOMS



One Bedroom Suite - room nr #30



LIVINGWELL

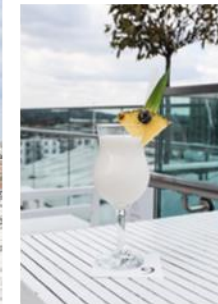
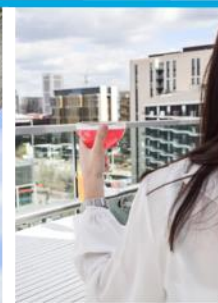
Gym & Spa – 2nd floor



Access with room key to gym & spa

SKY BAR, LOUNGE & TERRACE

9th floor





We Are **HILTON**

We Are **HOSPITALITY**