

The Waldorf Hilton, London



Blending Edwardian grandeur with modern comfort, The iconic Waldorf Hilton sits in the centre of London's glitzy theatre district and is just a four-minute walk from the Royal Opera House. Covent Garden, The British Museum, and Trafalgar Square are all within a mile of our door. During our 114 year legacy, we have delivered memorable experiences and we look forward to welcoming your guests to their London Home Away from Home.



OUR LOCAL AREA

THE BEST OF LONDON
WITHIN WALKING DISTANCE

- Covent Garden has **great links to the rest of the capital and beyond**

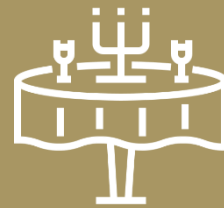
(Easy links to all major airport, only 50 minutes from Heathrow Airport and Gatwick Airport, 15 minutes for Eurostar)

(Easy links to all major train stations, only 5 min walking from Covent Garden station, 10 min walking from Charing Cross and Waterloo station)

- It is London's most central and exciting district for culture, **business** and leisure
- Covent Garden is defined as the **“West End”** area of London and it features also some of **London's most iconic sights.**
- Nevertheless, Covent Garden is surrounding by **financial district** and the home of **international corporate offices/HQ.**



ADELPHI SUITE



320 BANQUET



500 COCKTAIL
RECEPTION



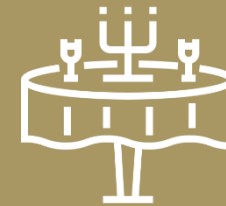
260 CLASSROOM



3 PARTITIONS



THE PALM COURT



180 BANQUET



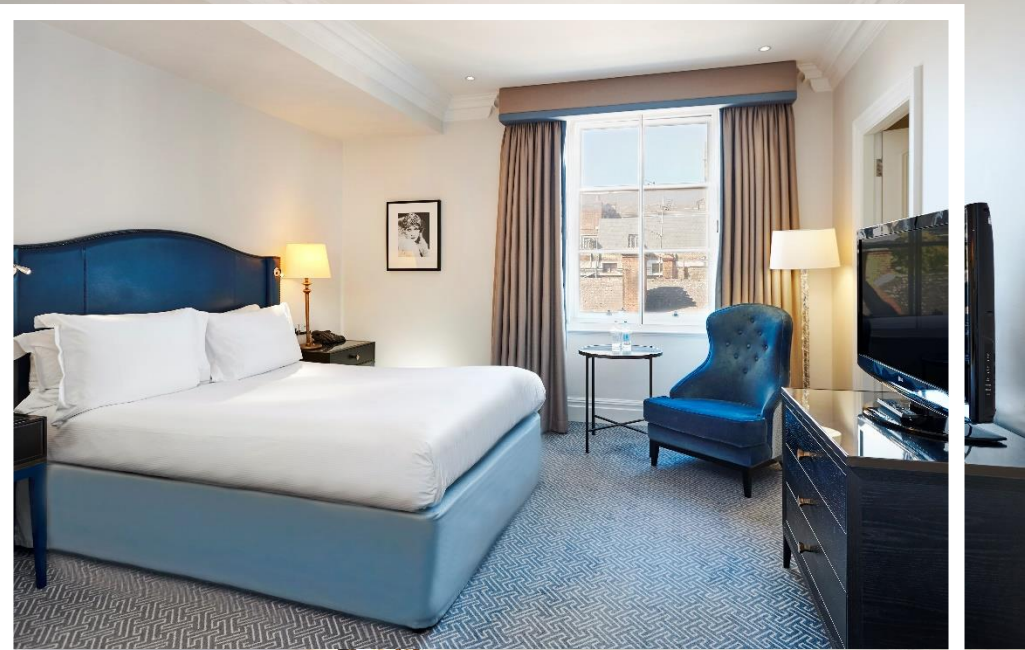
400 COCKTAIL
RECEPTION



150 THEATRE



HISTORIC



BEDROOMS



298 BEDROOMS



DIGITAL KEY



20 SUITES



IN-ROOM DINING



Executive Lounge

FACILITIES



Sauna and swimming pool



Fitness First Gym



Room service



Our ESG Story continues...



Sam was an excellent server who really went the extra mile!

At The Waldorf Hilton, we are offering a sustainable team building experience that can be held at our iconic hotel or client offices, from £500 per group.

Square Mile Farms bring vertical farms to the workplace, to encourage a healthier and sustainable lifestyles. Their team will work with attendees to design and integrate these farms into working environments, both indoor and outdoor.

Square Mile Farms have recently set up a pop up shop in Covent Garden, making it the perfect business for us to partner with as it is within the local area.

Nature in the office helps to relieve stress, improve productivity, purify the air and make people happier - which is why this initiative is the perfect team building experience.



Using the Hilton's LightStay corporate responsibility management system, Hilton provides a detailed estimate of the carbon emissions associated with a specific meeting or event. Carbon offsets can be used to mitigate carbon emissions, such as those associated with meeting and events travel.

Hilton, in partnership with South Pole, can then provide clients with carbon neutral meetings by investing in high quality carbon reduction projects that are aligned with the United Nations' Sustainable Development Goals and Hilton's 2030 Goals, which are to cut our environmental footprint in half and double our social impact by 2030.

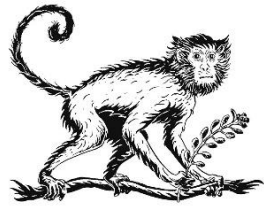


We work with Whizz Kids, a wonderful UK based charity that provides mobility aids for disabled young people. We have raised over £15K for them. This money gave the charity the ability to purchase well needed manual and electric wheelchairs for young people.

Additional hotel initiatives include:

- We have removed all plastic from our meeting spaces
- Our F&B offering is dependent on seasonal produce
- Recycling bins have been added to our bedrooms
- We are using sustainable branded merchandise for giveaways and promotions
- We are partnering with local businesses to work on projects to reduce waste/recycle, such as donating 1600 plastic bottles 'The Arks of Gimokudan' exhibition at Somerset House





MONKEY 47

SCHWARZWALD DRY GIN

Embark on the exciting journey with our immersive, tropical bar, The Wild Monkey, now available for group bookings and private hire for up to 50 people!

We have a variety of innovative food and drinks packages available for you to explore, to find the perfect combination for your special event.

Capacity: 50

Package prices from £42 per person

Exclusive Use from £5,500 minimum spend





Good Godfrey's

BAR & LOUNGE

Good Godfrey's takes its name from Howard Godfrey, the celebrated leader of The Waldorfians, our resident house band in the 1920s.

Godfrey was a household name and turned The Waldorf into a boisterous hotspot favoured by London's socialites, as well as Gaiety Girls and Stage Door Johnnies.

Choose from classic martinis to sours, fizzes and punchy aperitifs, not to mention our range of signature creations, our menu is compact and carefully curated





Homage



With Edwardian columns and sparkling chandeliers, Homage is a luxurious space where guests can indulge in our fabulous afternoon tea or seasonal a la carte menu.

. All dishes are made from carefully selected, locally sourced ingredients, showcasing the best of British produce.

Enjoy the relaxed vibe and watch the world go by with friends or colleagues





The T Room is the newest addition to The Waldorf, and is the perfect place to enjoy tea and cake.

Our Resident Tea Sommelier offers Tea Tasting Experiences that will take participants on a 'journey' from 'field to cup', where they will not only taste some of the premium Hope & Glory blends but will also have the opportunity to try our very own Waldorf Signature Blend, that was hand-picked by our General Manager in the world-renowned Kenilworth Gardens in Sri Lanka. Accompanying the teas, is a selection of carefully crafted cakes, made by our talented Pastry Chef. All of the teas provided in the T Room are also available for purchase and are the perfect gift for all occasions.





Thank you for your time



Laura Megyeri

Sales Manager – laura.megyeri@hilton.com

M +44 (0) 794 479 9075



[Linkedin.com/in/laura-megyeri](https://www.linkedin.com/in/laura-megyeri)