

An aerial photograph of a dense forest. The trees are mostly tall and thin, with some showing vibrant yellow and orange autumn foliage. The overall scene is dark, suggesting a low-light or dusk setting. The text 'APEX HOTELS' is centered in the middle of the image in a white, sans-serif font.

# APEX HOTELS



# A G E N D A

Slide 3: About Apex Hotels

Slide 4: ApexConnects

Slide 5: Apex bedroom

Slide 7: Sustainability

Slide 8: London Map

Slide 9: The Apex City of London

Slide 12: The Apex Temple Court

Slide 17: Edinburgh Map

Slide 18: The Apex Waterloo Place

Slide 21: The Apex Grassmarket

Slide 24: The Apex City of Edinburgh

Slide 25: The Apex Quay Hotel & Spa Dundee

Slide 30: The Apex City of Glasgow

Slide 31: The Apex City of Bath



# A B O U T   A P E X   H O T E L S






- Family-owned Scottish company
- “Find Yourself Here” – our motto
- 8 hotels in city centres and 4\*\*\*\* Luxury
- 5 key cities in the UK
  
- Large rooms with King size beds
- Walk-in showers and bathtubs
- Safe (laptop-size)
- Complimentary bottled water, Tea & Coffee, WiFi
  
- Travel Agent Rates
- Apex Assured
- [ApexConnects](#)/Meetings & Events/Hybrid Events/Private Dining
- Outdoor spaces\*
- Swimming pool, steam room, sauna\*, 24 hr Gym

\* selected properties



# APEXCONNECTS

Book meeting spaces online, quick & hassle free.  
[Click here to find out more!](#)

ALL  MON, MAI  08:1  16:1  8  BOOK

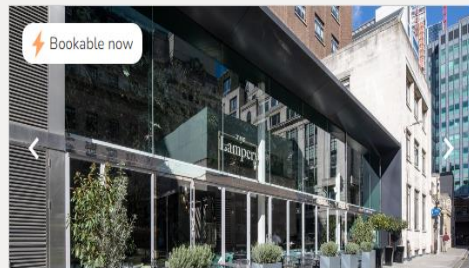
Showing 1 - 6 of 6 venues



APEX TEMPLE COURT HOTEL

BOOK

London  0,95 km



APEX CITY OF LONDON HOTEL

BOOK

London  1,46 km



Book your meeting space like you do your bedrooms

Easy booking online with instant confirmation

Book & pay instantly for meetings up to 20 guests



# A P E X H O T E L S U K







The Apex Room



The Apex Bathroom



# S U S T A I N A B I L I T Y

- Silver Accreditation with  #goingforGold
- > 60% of waste recycled at source
- 0 waste goes to landfill (all turned into refuse derived fuel)
- Renewable electricity from 100% Scottish Wind Farms
- 95% of our lighting is LED with a target of 100% by 2024
- Waste Management 'Reduce Reuse Recycle'
- Paperless Check-in
- [The Apex Grove](#)
- Antipodes organic toiletries with recycled ocean-bound plastic





# A P E X L O N D O N H O T E L S



TOTAL APEX HOTEL BEDROOMS IN LONDON – 413

APEX TEMPLE COURT HOTEL – 204

APEX CITY OF LONDON HOTEL – 209



# A P E X C I T Y O F L O N D O N



- 209 rooms and suites
- Prime city-centre location
- Complimentary high-speed Wi-Fi and national calls
- The Lampery Restaurant, Bar & Terrace
- 24hr gym studio
- Hybrid meetings & events with natural day light





A P E X   C I T Y   O F   L O N D O N  
T h e   L a m p e r y   E v e n t s





# A P E X C I T Y O F L O N D O N



## CITY SUITE

**CAPACITY:** Up to 40 cabaret style

**ROOM SIZE:** 63.3 m<sup>2</sup>

**CEILING HEIGHT:** 3.2 m

Our largest private room, the City Suite can host large meetings, corporate events or social occasions for up to 100 people and benefits from a break-out area in the Hart Street Lounge, as well as plenty of natural



## NEW YORK

**CAPACITY:** Up to 18 boardroom style

**ROOM SIZE:** 35 m<sup>2</sup>

**CEILING HEIGHT:** 2.4 m

Our New York room features a private terrace and lots of natural daylight making it a comfortable space to host meetings or private dinners. It can also be switched to black out for your privacy or presentation



## GENEVA

**CAPACITY:** Up to 18 boardroom style

**ROOM SIZE:** 42.9 m<sup>2</sup>

**CEILING HEIGHT:** 2.4 m

This room is multi-functional and can be styled to suit a variety of different events. From boardroom meetings to private celebratory dinners, it's ready to cater to your needs.

# A P E X T E M P L E C O U R T

- F l e e t S t r e e t -



- 4\* luxury hotel
- 204 rooms and suites (some with balconies)
- Complimentary in-room Nespresso as standard
- Bathrobes and slippers as standard
- Complimentary high-speed Wi-Fi and national calls

- 4 Categories of Suites
- Elegant Club Lounge
- Lazy Ballerinas Bar, The Courtyard & the Chambers Restaurant & Bar
- 2 Elegant boardroom or private dining venues
- 24hr gym studio





# A P E X   T E M P L E   C O U R T

- F l e e t   S t r e e t -



## THE JUSTICE ROOM

**CAPACITY:** Up to 18 boardroom style

**ROOM SIZE:** 27.95 m<sup>2</sup>

**CEILING HEIGHT:** 3.2 m

Hidden away in the beautifully refurbished Grade II listed building beneath Fleet Street, The Justice Room boasts traditional features, like the building's original marble and restored parquet flooring, and a walk-in wine cellar.



## THE LIBERALITY ROOM

**CAPACITY:** Up to 18 boardroom style

**ROOM SIZE:** 26.4 m<sup>2</sup>

**CEILING HEIGHT:** 3 m

Guests in The Liberty Room can sit around a feature table, complemented by plush rug, wood panelling, carefully curated furnishings, fine bone china and crystal glasses.



## LAZY BALLERINAS

**CAPACITY:** Up to 80 for drinks reception

**ROOM SIZE:** 60.8 m<sup>2</sup>

**CEILING HEIGHT:** 7 m

Impress your guests at our stunning wine bar, The Amicable Society of Lazy Ballerinas. The bespoke furniture, unique detailing and quirky artwork make our wine bar a luxurious and chic meeting and event space.

# A P E X   T E M P L E   C O U R T

- F l e e t   S t r e e t -



## MASTER SUITE

**CAPACITY:** Up to 8 boardroom style

Our Master Suites at Apex Temple Court Hotel transform into chic and intimate spaces that can seat eight attendees and they're perfect for small corporate meetings.



## THE LEGAL SUITE

**CAPACITY:** Up to 13 rooms in a mix of categories

Located on Fleet Street, in the heart of London's legal district, we've got a range of stylish spaces that can be perfectly designed especially for legal practitioners. Whether it's an office and war room that you are looking for, or witness preparation rooms and accommodation, we've got everything you could need and all privately accessible if required.



## CHAMBERS

**CAPACITY:** Up to 40 seated

**ROOM SIZE:** 61 m<sup>2</sup>

**CEILING HEIGHT:** 2.48 m

Looking for one of the best hotel restaurants in Central London to host a meeting or event? Then the Chambers Restaurant is the perfect option for you. The restaurant is tucked away in an intimate, contemporary space just beyond the reception of Apex Temple Court Hotel.



# A P E X T E M P L E C O U R T

- F l e e t S t r e e t -





# A P E X T E M P L E C O U R T

- F l e e t S t r e e t -





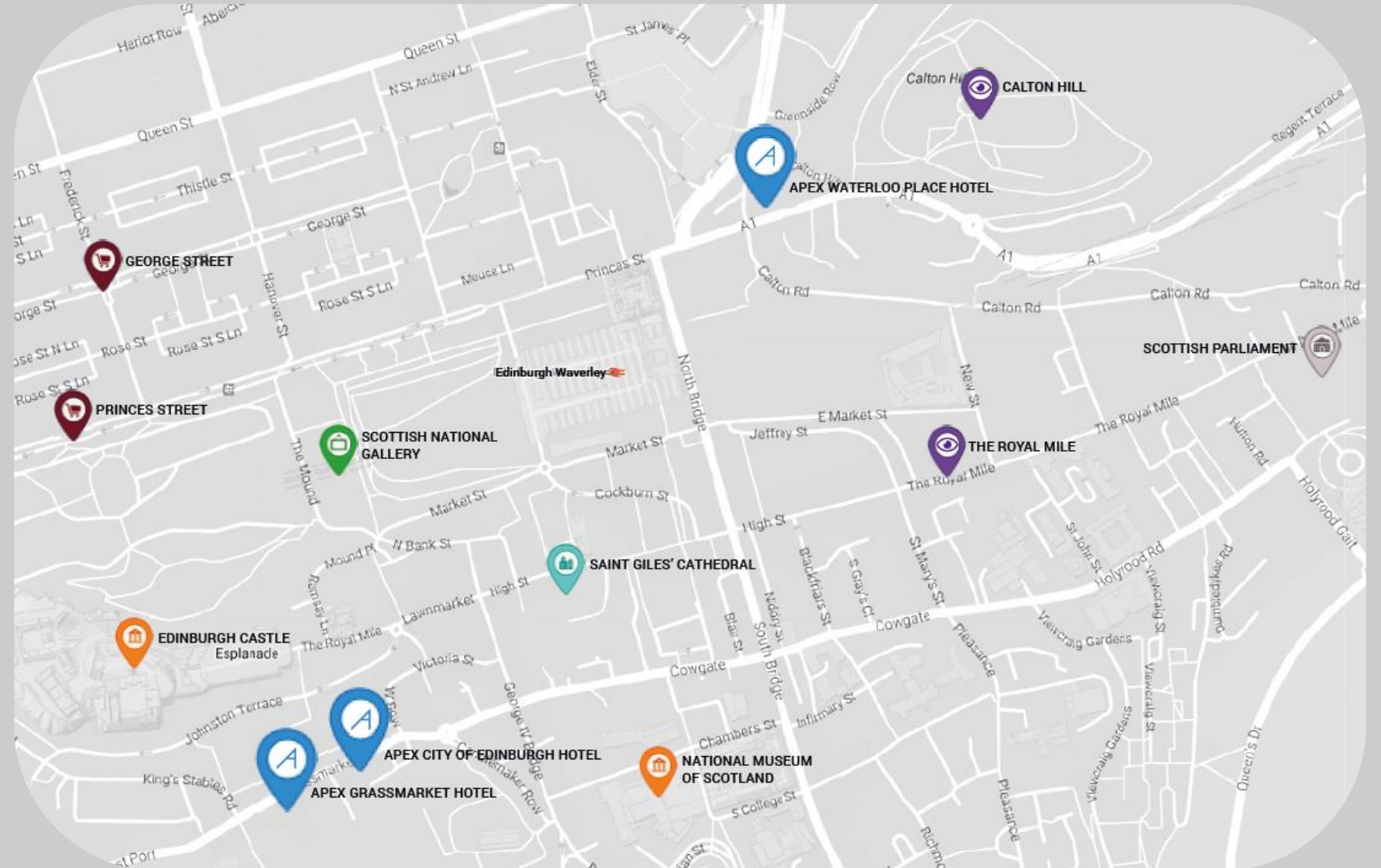
# W E ' V E G O T E D I N B U R G H C O V E R E D

TOTAL APEX BEDROOMS IN EDINBURGH – 475

- APEX GRASSMARKET HOTEL – 169
- APEX WATERLOO PLACE – 184
- APEX CITY OF EDINBURGH – 122

## LOCATIONS

- All City Centre Hotels near:
  - Royal Mile
  - Edinburgh Castle & Princess Street
- Easy access from Waverley Train Station, Haymarket Train Station & Tram
- 20 Min to Edinburgh Airport

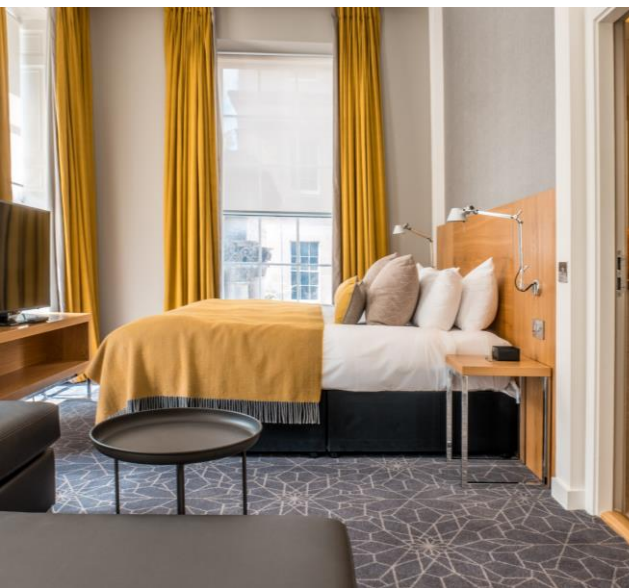


# A P E X   W A T E R L O O   P L A C E

- E d i n b u r g h -



- 4\* Georgian luxury hotel built in 1819
- 184 rooms and suites
- Prime city-centre location
- Complimentary high-speed Wi-Fi and national calls
- Elliot's Georgian Restaurant & Bar
- Yu Spa – Japanese-inspired holistic spa
- Pool
- 24hr gym studio
- Hybrid meetings & events with natural day light





# A P E X   W A T E R L O O   P L A C E

- E d i n b u r g h -



## WATERLOO SUITE

CAPACITY: Up to 150 theatre style

ROOM SIZE: 134.5 m<sup>2</sup>

CEILING HEIGHT: 3.48 m



## FORTH

CAPACITY: Up to 60 theatre style

ROOM SIZE: 57.6 m<sup>2</sup>

CEILING HEIGHT: 3.67 m



## CALTON

CAPACITY: Up to 60 theatre style

ROOM SIZE: 58.8 m<sup>2</sup>

CEILING HEIGHT: 3.67 m

# A P E X    W A T E R L O O    P L A C E

- E d i n b u r g h -



## REGENT

**CAPACITY:** Up to 35 theatre style

**ROOM SIZE:** 38.4 m<sup>2</sup>

**CEILING HEIGHT:** 3.54 m

Our stylish Regent room boasts a flexible layout, floor to ceiling windows and chic period features, making it a great place to host your next meeting or private dinner.



## WAVERLEY

**CAPACITY:** Up to 20 theatre style

**ROOM SIZE:** 24.4 m<sup>2</sup>

**CEILING HEIGHT:** 3.68 m

Our bright and airy Waverley room is great for intimate dinners, informal meetings and creative brainstorms alike. Floor to ceiling windows and period features make it one of our chicest spaces and it can be set up boardroom style or theatre style.



## HYBRID MEETINGS WATERLOO PLACE HOTEL

Make virtual collaboration easier – we've got a space to suit.



# A P E X - G R A S S M A R K E T

- E d i n b u r g h -



- Old Town location, middle of Grassmarket
- Walking Distance to Waverly Train Station, Bus Station & Tram Stops
- 169 rooms
- Amazing views of Edinburgh Castle
- Up to 250 meeting capacity
- Pool & 24hr gym studio
- Hybrid meetings & events with natural day light
- Car Park





# A P E X - G R A S S M A R K E T

- E d i n b u r g h -



## APEX SUITE

**CAPACITY:** Up to 200 theatre style

**ROOM SIZE:** 129 m<sup>2</sup>

**CEILING HEIGHT:** 3 m

Perfect for conferences and larger meetings, our Apex Suite sits at 129 sqm and is fully equipped with feature lighting and excellent acoustics to ensure your conference or event is a success. This room has the wow-factor, making it great for exciting product launches and large presentations.



## HEIGHTS

**CAPACITY:** Up to 120 dinner

**ROOM SIZE:** 149.76 m<sup>2</sup>

**CEILING HEIGHT:** 2.5 m

If you're looking to impress with a showstopping venue, look no further than Heights at Apex Grassmarket Hotel. Our expert Events team will help plan your event and can adapt the space to suit your needs. From product launches to larger meetings, our Heights venue is flexible and impressive.



## SYDNEY

**CAPACITY:** Up to 60 theatre style

**ROOM SIZE:** 58 m<sup>2</sup>

**CEILING HEIGHT:** 2.5 m

This bright and spacious room is perfect for hosting larger meetings and presentations. Our Sydney room is flexible and features a contemporary design, making it the perfect place to host your next meeting.



# A P E X - G R A S S M A R K E T

- E d i n b u r g h -



## SAN FRANCISCO

**CAPACITY:** Up to 30 theatre style

**ROOM SIZE:** 27.3 m<sup>2</sup>

**CEILING HEIGHT:** 2.5 m

This bright and airy space can be set up theatre style and boardroom style, making it great for a variety of meetings. The contemporary design, adaptable layout and large windows make it the perfect room for both relaxed and formal meetings.



## MONTREAL

**CAPACITY:** Up to 15 theatre style

**ROOM SIZE:** 17.3 m<sup>2</sup>

**CEILING HEIGHT:** 2.5 m

Our contemporary Montreal room can be set up theatre style and boardroom style and is a great place to host intimate meetings. Suitable for creative brainstorming and more formal meetings alike, this room is ideal for a variety of different businesses.



## ROME

**CAPACITY:** Up to 15 theatre style

**ROOM SIZE:** 17.3 m<sup>2</sup>

**CEILING HEIGHT:** 2.5 m

This quiet and contemporary room is the perfect place to host your next meeting. It can be set up theatre style and boardroom style, and our expert Events team will be on hand to ensure everything runs smoothly.



# A P E X C I T Y O F E D I N B U R G H

- E d i n b u r g h -



- Prime city centre location with great views of Edinburgh Castle
- Walking Distance to Waverly Train Station, Bus Station & Tram Stops
- 122 guestrooms and suites



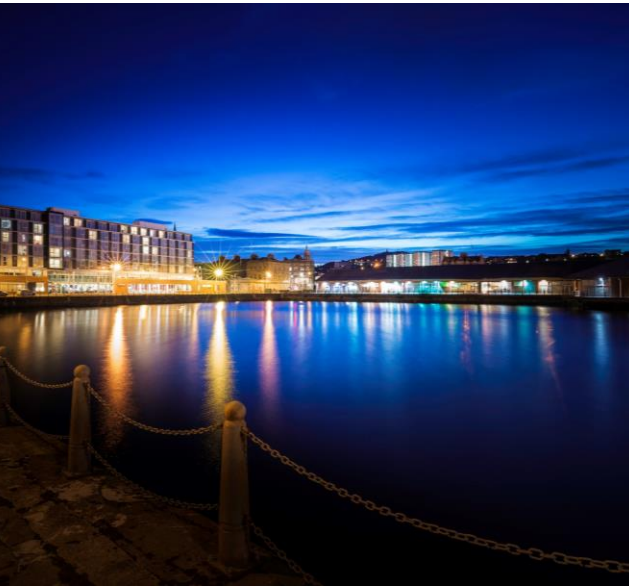


# A P E X   C I T Y   Q U A Y   H O T E L   &   S P A

- D U N D E E -



- 60 minutes from Edinburgh Airport
- 10 minutes' Walk from V&A, RSS Discovery, Train & Bus Station
- Complimentary high-speed Wi-Fi and national calls
- Yu Spa – Japanese-inspired holistic spa
- Pool & 24hr gym studio
- 450 maximum event capacity (up to 800 in marquee)
- 156 rooms and suites
- Large on-site car park
- Hybrid meetings & events with natural day light
- Quayside Bar & Grill





# A P E X   C I T Y   Q U A Y   H O T E L   &   S P A

- D U N D E E -



## CITY QUAY SUITE

**CAPACITY:** Up to 450 for a drinks reception

**ROOM SIZE:** 394 m<sup>2</sup>

**CEILING HEIGHT:** 4 m

Our largest event space sits at 394 sqm, making it ideal for weddings, gala dinners, large celebrations and conferences.



## ART GALLERY

**CAPACITY:** Up to 100 for a drinks reception

**ROOM SIZE:** 105 m<sup>2</sup>

**CEILING HEIGHT:** 3 m

With picturesque views of the quay, River Tay and Tay Road Bridge, our Art Gallery is the ideal space to hold celebrations, conferences or product launches.



## MELBOURNE

**CAPACITY:** Up to 40 theatre style

**ROOM SIZE:** 42 m<sup>2</sup>

**CEILING HEIGHT:** 3 m

Our light and spacious Melbourne room has a flexible layout and can be used for a variety of events. It's ideal for holding training sessions, boardroom meetings or as somewhere to enjoy delicious cuisine with friends, family or colleagues.

# A P E X   C I T Y   Q U A Y   H O T E L   &   S P A

- D U N D E E -



## VANCOUVER

**CAPACITY:** Up to 25 theatre style

**ROOM SIZE:** 34 m<sup>2</sup>

**CEILING HEIGHT:** 3 m

Intimate and bright, our Vancouver room is perfect for a range of different events. From creative brainstorming to formal boardroom meetings, it's equipped with the latest technology to bring your meetings to life, and is also a great place to celebrate a special occasion with friends, family or colleagues.



## BARCELONA

**CAPACITY:** Up to 20 theatre style

**ROOM SIZE:** 24 m<sup>2</sup>

**CEILING HEIGHT:** 3 m

Our contemporary Barcelona room is an adaptable space where you can hold intimate boardroom meetings or enjoy a private meal with friends and family.



## VENICE

**CAPACITY:** Up to 20 theatre style

**ROOM SIZE:** 24 m<sup>2</sup>

**CEILING HEIGHT:** 3 m

Our bright and airy Venice room boasts floor-to-ceiling windows making it the perfect space to host intimate meetings or dine with friends and family.



# A P E X   C I T Y   Q U A Y   H O T E L   &   S P A

- D U N D E E -



## WASHINGTON

**CAPACITY:** Up to 20 theatre style

**ROOM SIZE:** 24 m<sup>2</sup>

**CEILING HEIGHT:** 3 m

Our bright and contemporary Washington room is perfect for intimate meetings and private dining. Whatever the occasion, our expert Events team will ensure it's a success.



## PRIVATE DINING ROOM

**CAPACITY:** Up to 14 boardroom style

**ROOM SIZE:** 24 m<sup>2</sup>

**CEILING HEIGHT:** 3 m

This chic and contemporary space is the perfect place to indulge in delicious cuisine with friends and family whilst our expert Events team look after all the finer details.



## CLARITY

**CAPACITY:** Up to 16 theatre style

**ROOM SIZE:** 24 m<sup>2</sup>

**CEILING HEIGHT:** 3 m

The refreshing atmosphere and informal setting of our Clarity room lends itself perfectly to informal meetings, interviews and brainstorming sessions.



# A P E X   C I T Y   Q U A Y   H O T E L   &   S P A

- D U N D E E -



## INSPIRE

CAPACITY: Up to 20 theatre style

ROOM SIZE: 24 m<sup>2</sup>

CEILING HEIGHT: 3 m

Our bright and airy Inspire room is set up boardroom style and is perfect space for a variety of different meetings and creative brainstorm.





# A P E X C I T Y O F G L A S G O W



- City Centre location: 10-minutes' walk from Queen St Station & Central Train & Bus Stations
- 20 minutes' drive from Glasgow Airport
- 104 rooms and suites
- Co-working & Hot Desk tables available in The Lounge
- Complimentary high-speed Wi-Fi and national calls
- Duplex Suite with birds-eye views of the city centre



# A P E X C I T Y O F B A T H



- 90 minutes from London & 10 minutes' Walk from train station
- 177 guestrooms
- Pool & 24hr gym studio; steam room & sauna
- Complimentary high-speed Wi-Fi and national calls
- Bath's largest conference space: 400 maximum event capacity
- Bespoke conference wing with private entrance
- Hybrid meetings & events with natural day light
- Full Staging, BOSE Surround Sound & Sennheiser Microphones





# A P E X   C I T Y   O F   B A T H



## LANSDOWN SUITE

**CAPACITY:** Up to 400 theatre style

Our Lansdown Suite can comfortably host exhibitions, conferences, drinks receptions and weddings. The venue can be partitioned and used as a smaller space and has a street level private loading entrance, dance floor and stage.



## KINGSMEAD

**CAPACITY:** Up to 80 theatre style

This room is ideal for more intimate meetings and can be set up theatre and boardroom style to suit. Its flexibility means it can be split into two smaller rooms to suit your needs, and it can be tailored for a private dinner with family and friends too.



## CAMDEN

**CAPACITY:** Up to 50 theatre style

As well as being used for intimate meetings, this room is available in boardroom style for social gatherings or presentations.

# A P E X   C I T Y   O F   B A T H



## WALCOT

**CAPACITY:** Up to 50 theatre style

Walcot is perfect for corporate AGMs, board meetings, formal business presentations and private dinners. It faces our light-filled atrium which can be used as a breakout area.



## BATHWICK

**CAPACITY:** Up to 14 boardroom style

This room is available in boardroom style for medium-sized meetings in the conference centre. It makes a great, formal place to host clients or colleagues for a meeting in stylish surroundings.



## WIDCOMBE

**CAPACITY:** Up to 14 boardroom style

Ideal for all day meetings, this room comes with a breakout space and the latest technology, such as a built-in screen and a coffee machine. A glass wall provides natural light from the central atrium.



# A P E X   C I T Y   O F   B A T H



## THE ATRIUM

**CAPACITY:** Up to 150 for a drinks reception

This light-filled space is the ideal place to host an impressive event in Bath. It can be used exclusively for wedding receptions, networking events or launch parties, and has lift access.



## THE LANSDOWN BAR

**CAPACITY:** Up to 60 for a drinks reception

Enjoy our light-filled modern space, ideal for small private dinners, breakfast meetings for up to 30 people and drinks receptions up to 60 people. The room offers a private bar with beers and ciders on tap to keep your guests happy.



## THE TERRACE BAR

**CAPACITY:** Up to 60 for a drinks reception

Our modern and elegant space is ideal for receptions and informal drinks. With outside space available, it accommodates up to 40 people in the bar and 60 if using the bar and terrace.



# A P E X   C I T Y   O F   B A T H



## RESTAURANT & BAR

**CAPACITY:** Up to 150 for a drinks reception

Our restaurant and bar can be hired out for exclusive use, creating a chic, private place to host an event. It's perfect for drinks receptions, exhibitions and private events.





# APEX HOTELS



ADINA SAVUT | Corporate Sales Director

[Adina.Savut@apexhotels.co.uk](mailto:Adina.Savut@apexhotels.co.uk)

07732 686 586