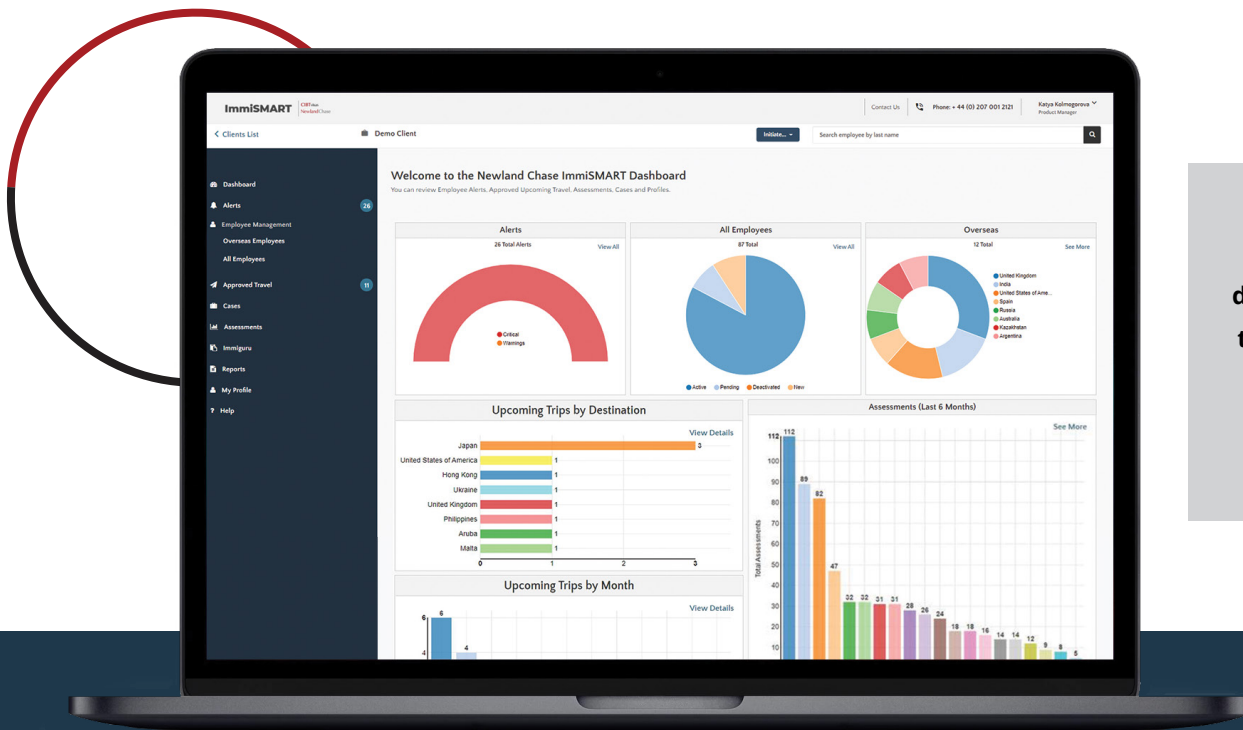


ImmiSMART is a comprehensive, market leading talent mobility portal for travel managers and global mobility professionals.

Driven and built by Newland Chase's immigration experts, it combines work permit and visa information with assessment logic to enable travel and global mobility teams, as well as employees, to effortlessly navigate complex global immigration laws and regulations to ensure that all overseas travel is fully compliant.

The unique technology is flexible and may be easily configured and integrated into an organization's wider global mobility ecosystem to reduce the time and cost of administering travel and global mobility programs.



ImmiSMART gives your company the data and knowledge to plan, assess, and mitigate the risks associated with a mobile workforce.

EASY TO USE

Its intuitive, appealing user interface makes it simple for both HR and employees to access travel assessments and case status updates, as well as reports and personal profiles.

COMPREHENSIVE

It combines the industry's largest up-to-date database of global immigration processes and requirements regularly reviewed by a network of immigration experts around the globe.

ADAPTABLE

It offers the choice between employee-driven self-service and HR-monitored and supervised completion of pre and post-travel assessments and downstream service initiations.

SECURE

With four geographically dispersed SOC II approved data centers, your organization and employee data is protected by the best technology and processes compliant with all relevant international data security laws, including GDPR.



What Can ImmiSMART Do?

ImmiSMART uses employee profile data and past travel history together with trip dates and activities to **assess if a work permit, visa, A1 certificate or Posted Worker Notification may be required** for an international trip, and also monitors stay limits.

COVID-19 entry and health requirements, transit and return conditions as well as information related to in-country experience, are also delivered alongside ImmiSMART assessment results.

ImmiSMART's advanced logic engines deliver meaningful analytics via a live digital dashboard.

This invaluable management information on an organization's global travel population can drive strategic talent mobility decisions, analyze trends, close compliance gaps and identify cost saving opportunities.

Unlike many other similar offerings on the market, **ImmiSMART delivers an instantaneous, automated assessment in the majority of cases, resulting in decreased individual consultation fees.**

ImmiSMART supports employees taking ownership for their own travel compliance, by running an assessment ahead of booking travel.

ImmiSMART highlights compliance risks via alerts and may be configured so that service approvals need to be secured before travel can be booked (to reduce the risk of non-compliant travel).

ImmiSMART facilitates easy initiation of visa and immigration services to CIBTvisas and Newland Chase with or without an approval process.

Similar offerings may be subject to **mandatory audit rotation requirements** i.e. if the offering selected belongs to a tax provider, and an organization has fully integrated the technology offering with their other providers and systems, then they may be required to redo those integrations with another provider after five years.

ImmiSMART provides self-serve access to a variety of useful reports such as the Aggregated Travel Report which can easily be downloaded and shared with a tax provider to assess tax or social security liability on a per employee basis.

ImmiSMART brings people, processes and data together to assess and track compliance and associated risks.

Ready to Learn More?

We welcome the opportunity to have a conversation about your talent needs, mobility strategy and wider business goals and how we can assist you with navigating a constantly evolving mobility landscape and open borders to access international talent.

Contact Newland Chase today to learn more or [schedule a demo](#) of the ImmiSMART platform.