

2024

---

# *Native Places.*

Stay Original.



nativeplaces.com  
@nativeplacesuk





---

DON'T SETTLE. STAY ORIGINAL.

## WHY WE EXIST

*Native Places helps you plug into cities and communities – whether you're passing through or making permanent plans.*

*Our ApartHotels are ideal for energetic travellers, curious families, work trippers, one-nighters, or staycayers.*

*Our Apartment Collection is ideal for anyone relocating to a new city or looking to stay a while.*



## VISION.

*A thriving Native network that connects interesting people with interesting places. All so they can stay original.*



## PURPOSE.

*Help people plug into cities and communities. Fast.*



## MISSION.

*Create great places, with great people, in great areas.*



---

APARTMENT

# WTF APARTHOTELS?



**SPACE TO DINE.**

*Fully equipped kitchen.*



**SPACE TO WORK.**

*High speed WiFi.*



**SPACE FOR ALL.**

*Pet friendly.*

**SPACE TO MOVE.**

*average property size of 500 sf.*

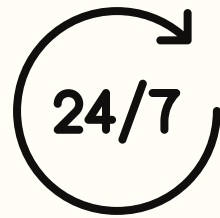


APARTMENT

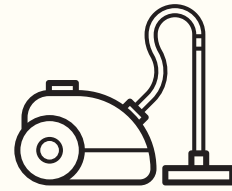
# WHAT'S INCLUDED?



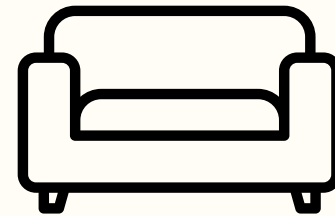
CHECKIN FROM 3PM -  
OUT 11AM



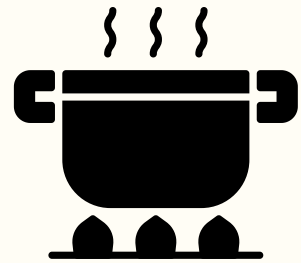
24/7 RECEPTION



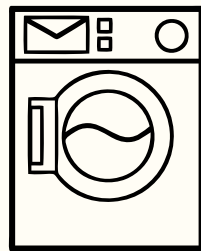
HOUSEKEEPING



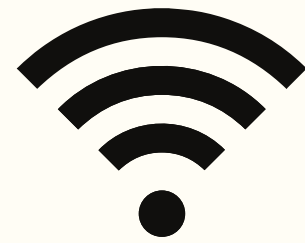
SOFAS/ LIVING SPACE



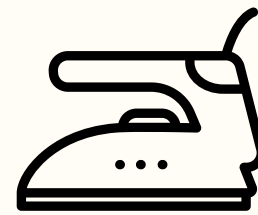
KITCHEN



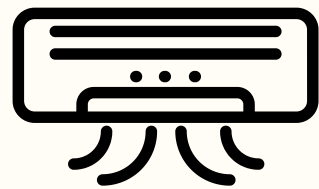
MACHINE/TUMBLE  
DRYER



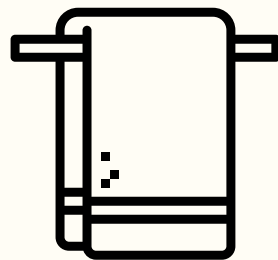
WIFI



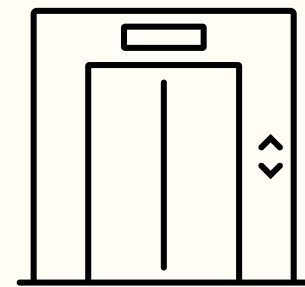
IRON



AIRCON\*



TOWLES AND TOILETRIES



LEFT



DISABILITY ACCESS





# *Our Green Mission.*

*Our sustainability mission is to **minimise our impact** on the environment, embed ourselves within our **communities** to give our guests a more **sustainable and interesting** stay.*

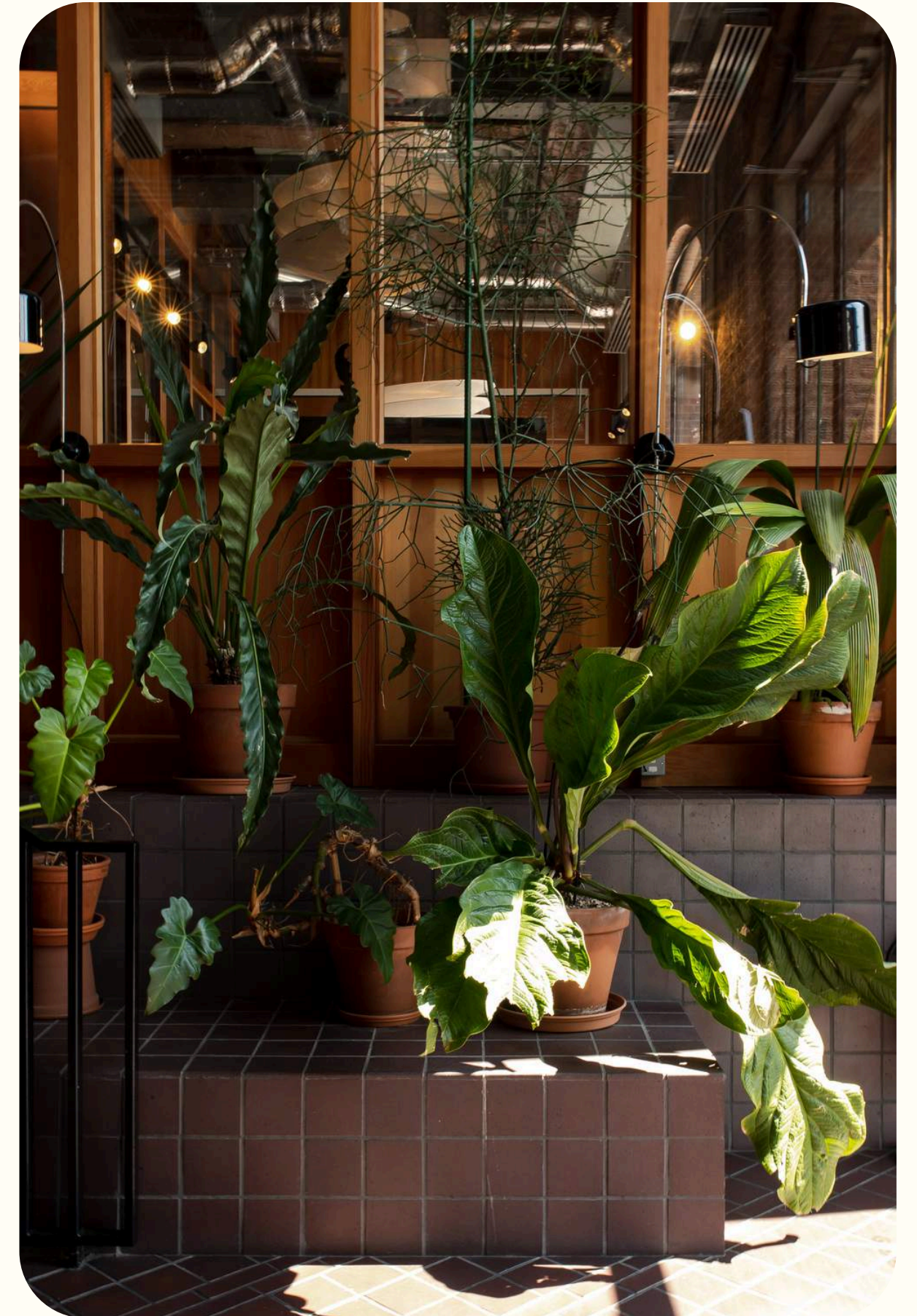
Our mission reflects our commitment to making a positive impact on the community and the planet.

We believe that by working together, we can create a better future for everyone. We are dedicated to integrating sustainability into all aspects of our business and culture, and to being accountable for our impact on the environment and our communities.

**Certified**



**Corporation**  
**PENDING**









OUR APARTHOTELS \

# WTF APARTHOTELS?

*Our ApartHotels are ideal for energetic travellers, curious families, work trippers, one-nighters, or staycayers.*



KING'S  
WARDROBE



BANKSIDE



HYDE PARK



MAYFAIR



MANCHESTER



GLASGOW



EDINBURGH



A modern kitchen and dining area. The kitchen features teal cabinetry with gold-colored trim, a white countertop, and a stainless steel sink with a curved faucet. On the counter, there is a loaf of bread, a cutting board, and a bowl of fruit. The dining area has a dark wood table and four wooden chairs with light-colored upholstered seats. A track lighting fixture with three black cylindrical shades hangs over the table. The background shows a dark wood door and a white air conditioning unit on the wall. Sunlight casts shadows on the floor.

# NATIVE MANCHESTER



APARTMENT

# NATIVE MANCHESTER

## WHAT.

*162 luxury and serviced apartments sit within the Grade II listed Ducie Street Warehouse that's connected to everything Manchester has to offer.*

## BEST BITS.

*Lounge, restaurant, bar, all-day deli counter, takeaway shop, cinema, outdoor terrace, and fitness classes from BLOK.*

## SPECIAL MENTION:

*Winner of The Sunday Times Best Hotel, North of England*

## LOCATION.

*Warehouse, Ducie St, Manchester M1 2TP*



*Manchester Piccadilly 1 minute*

## AT A GLANCE.

*Click the property type to view 3D tour*

[33 Studios](#)

[21 Two Beds](#)

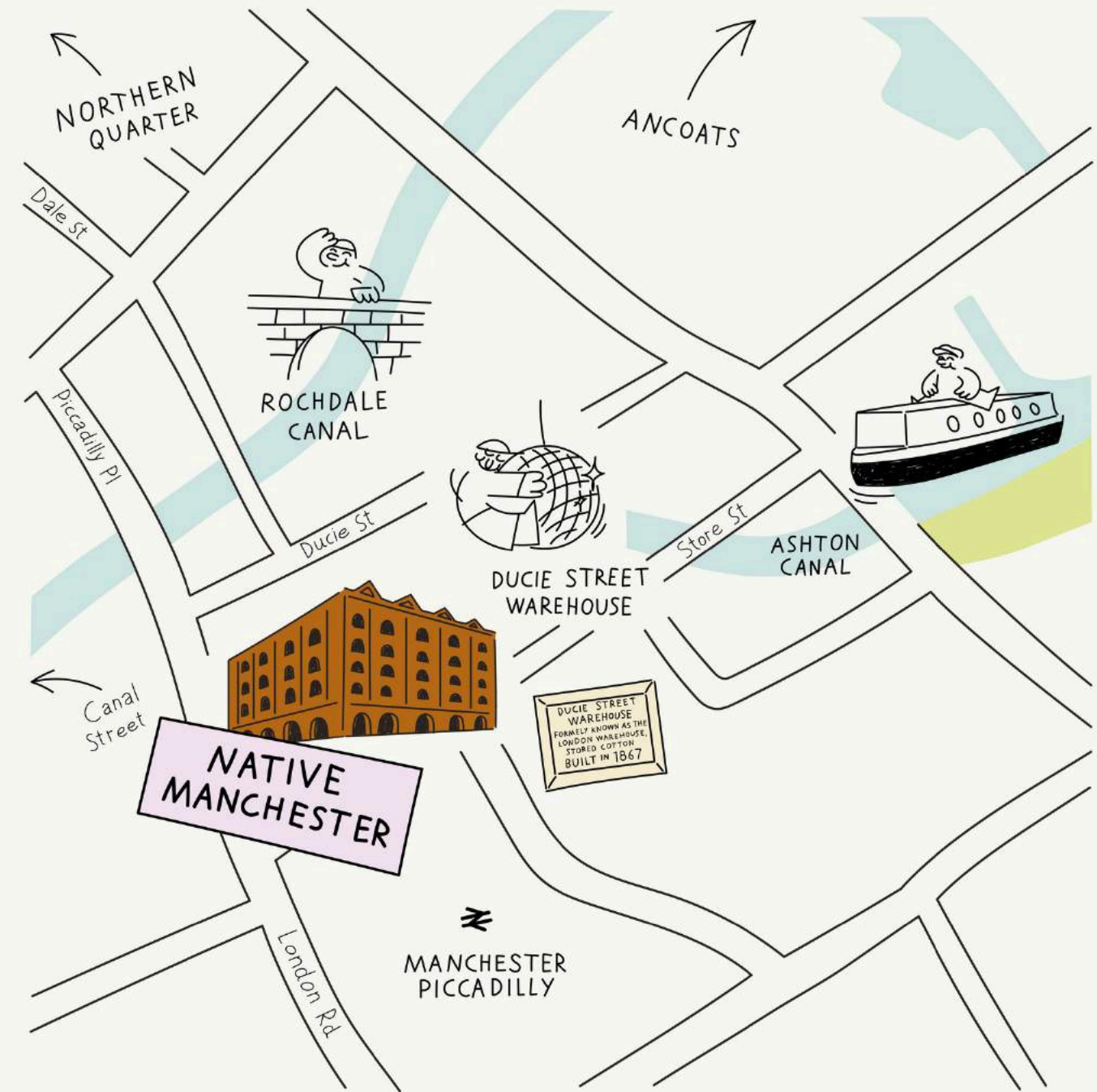
[22 Premium Studios](#)

[13 Premium Two Beds](#)

[43 One Beds](#)

[8 Penthouses](#)

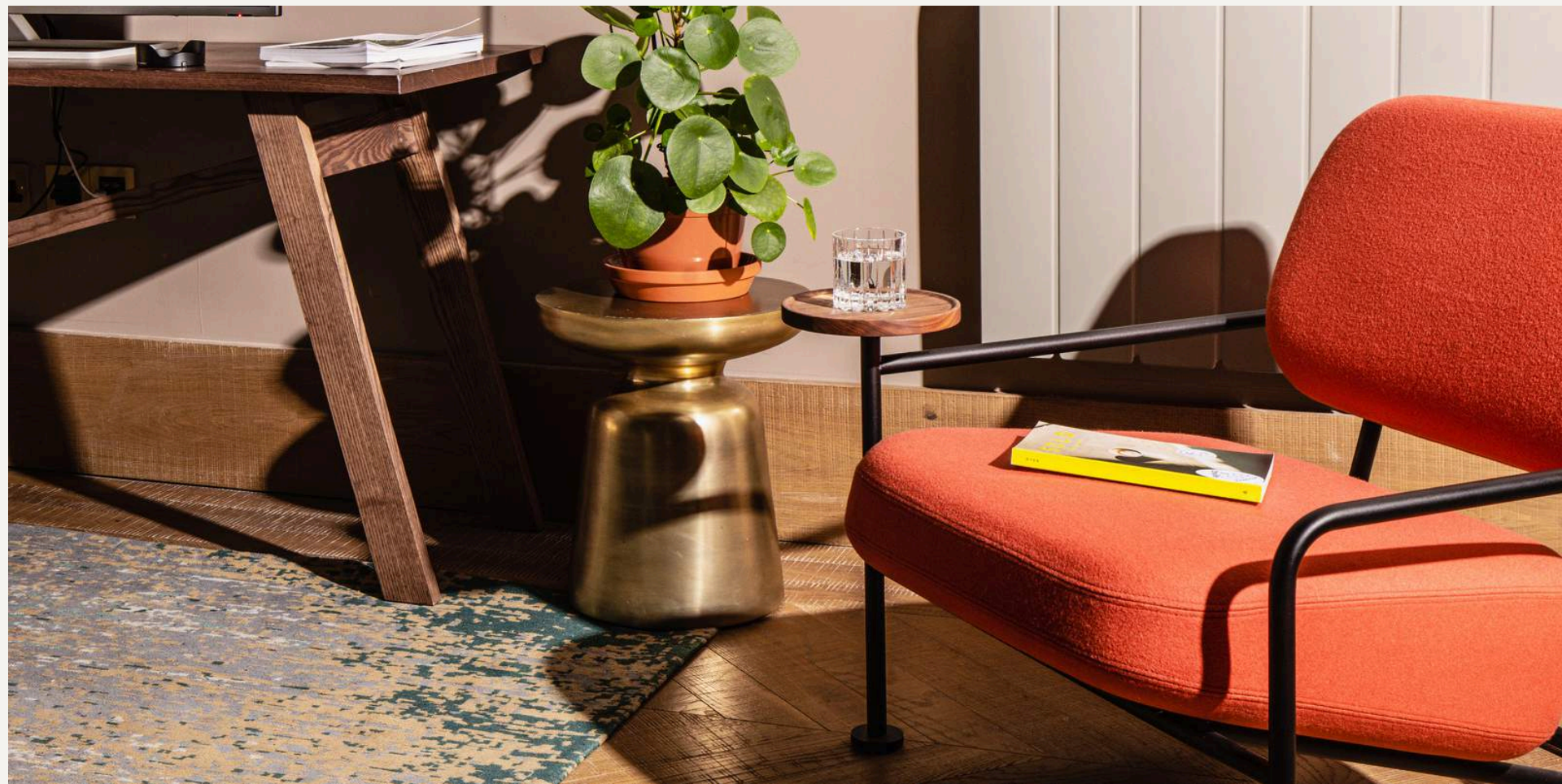
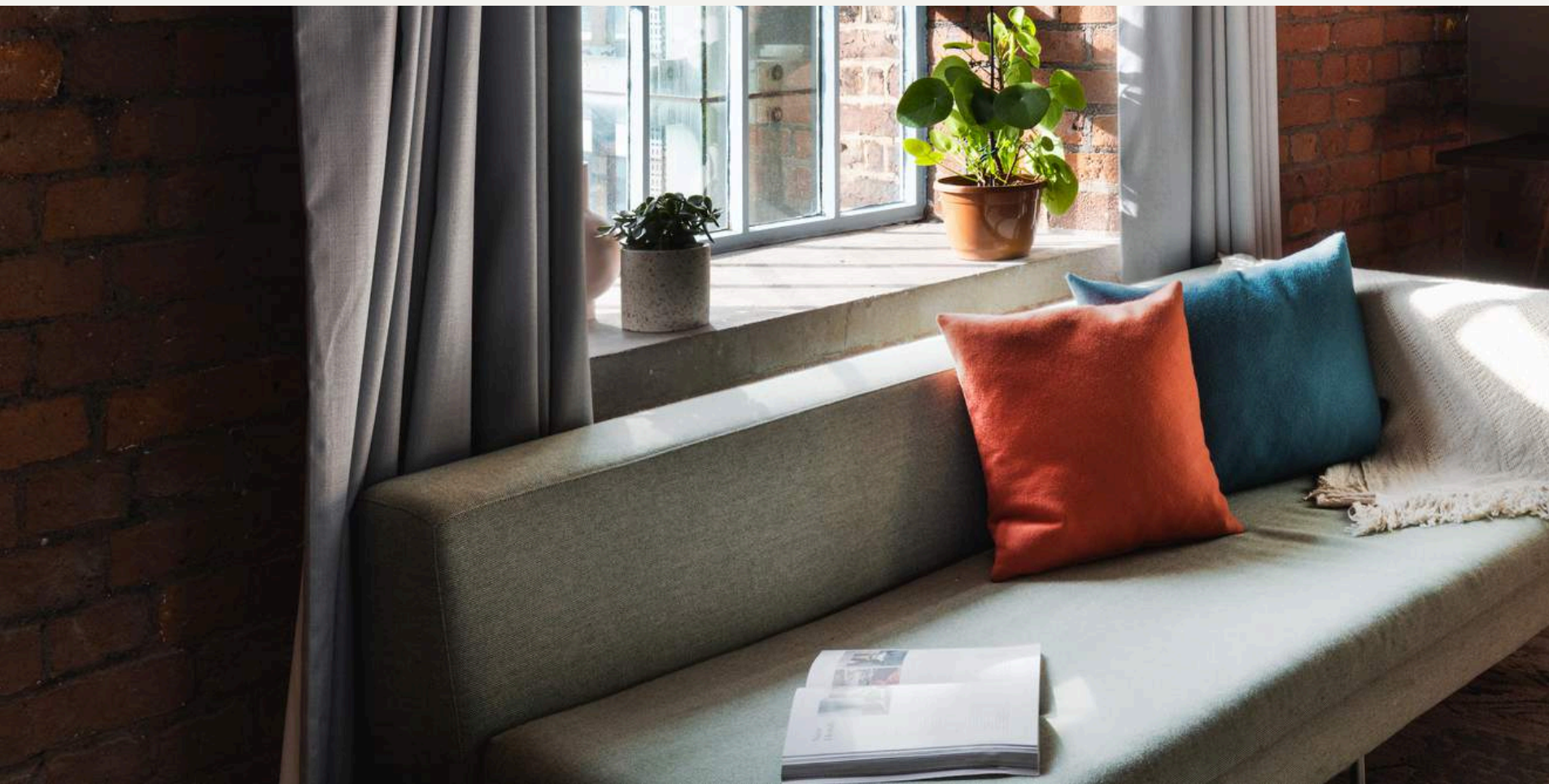
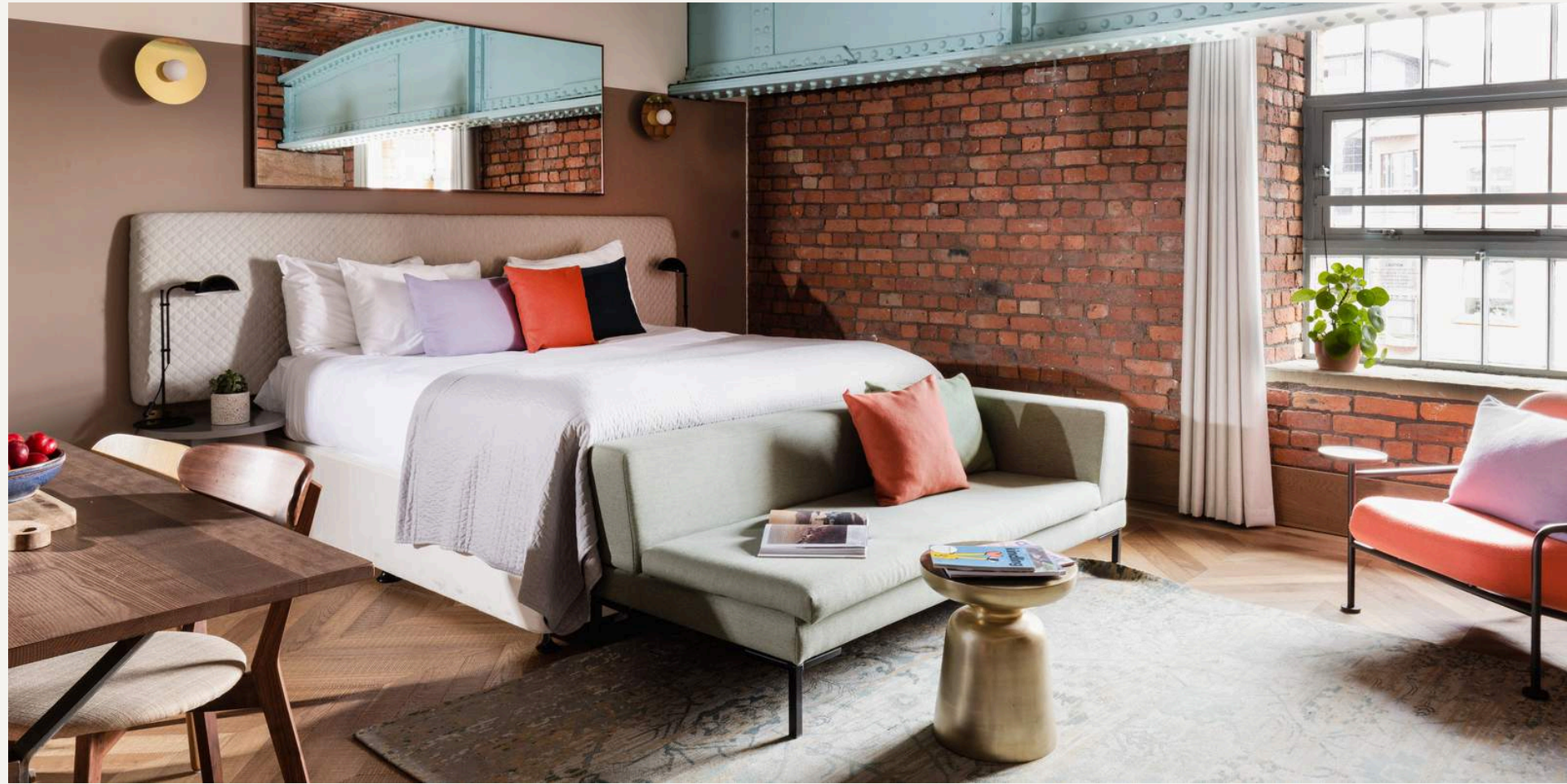
[26 Premium One Beds](#)



**Explore our  
Neighbourhood Heroes.**

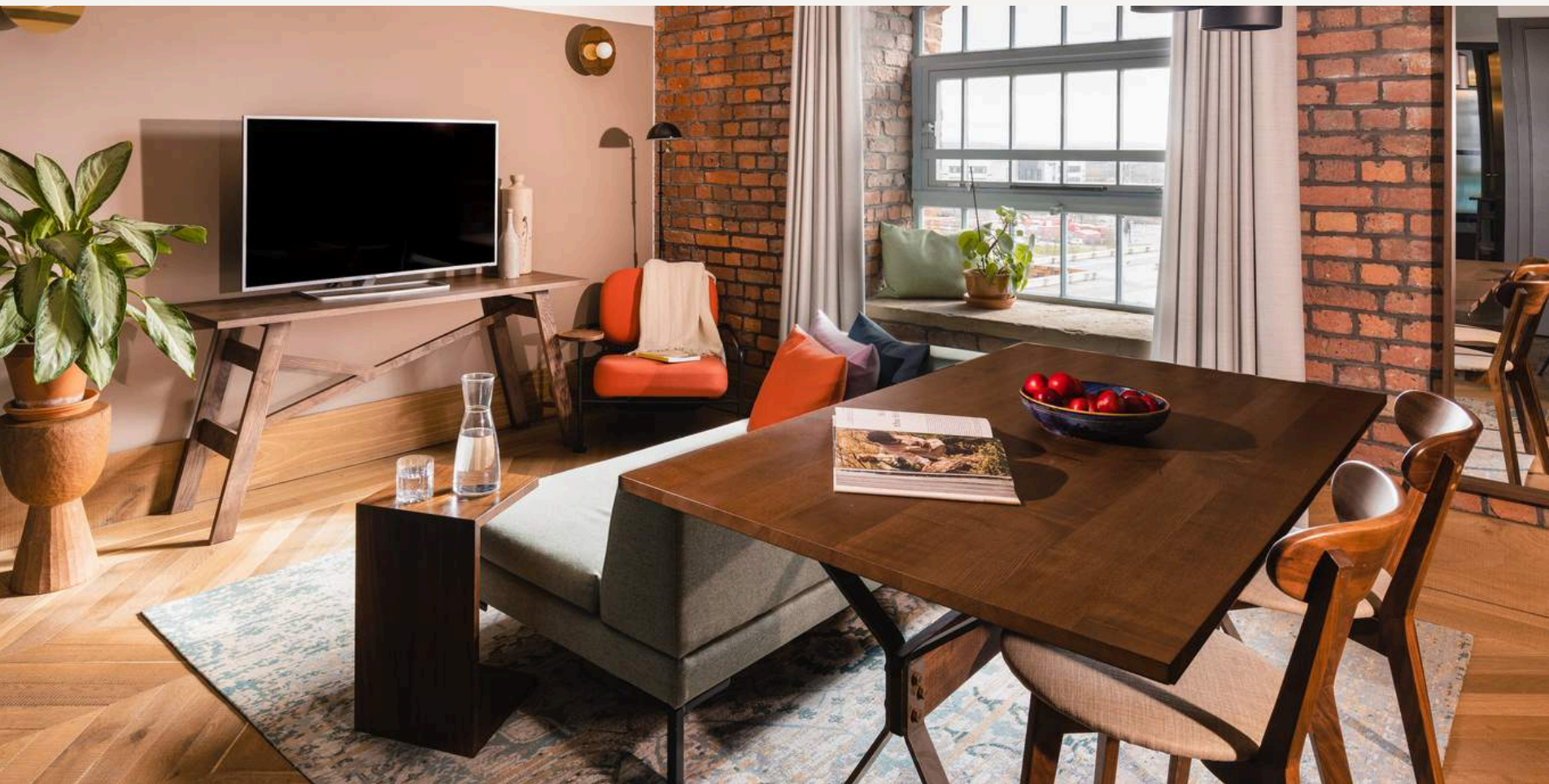


# NATIVE MANCHESTER STUDIO \ PREMIUM STUDIO



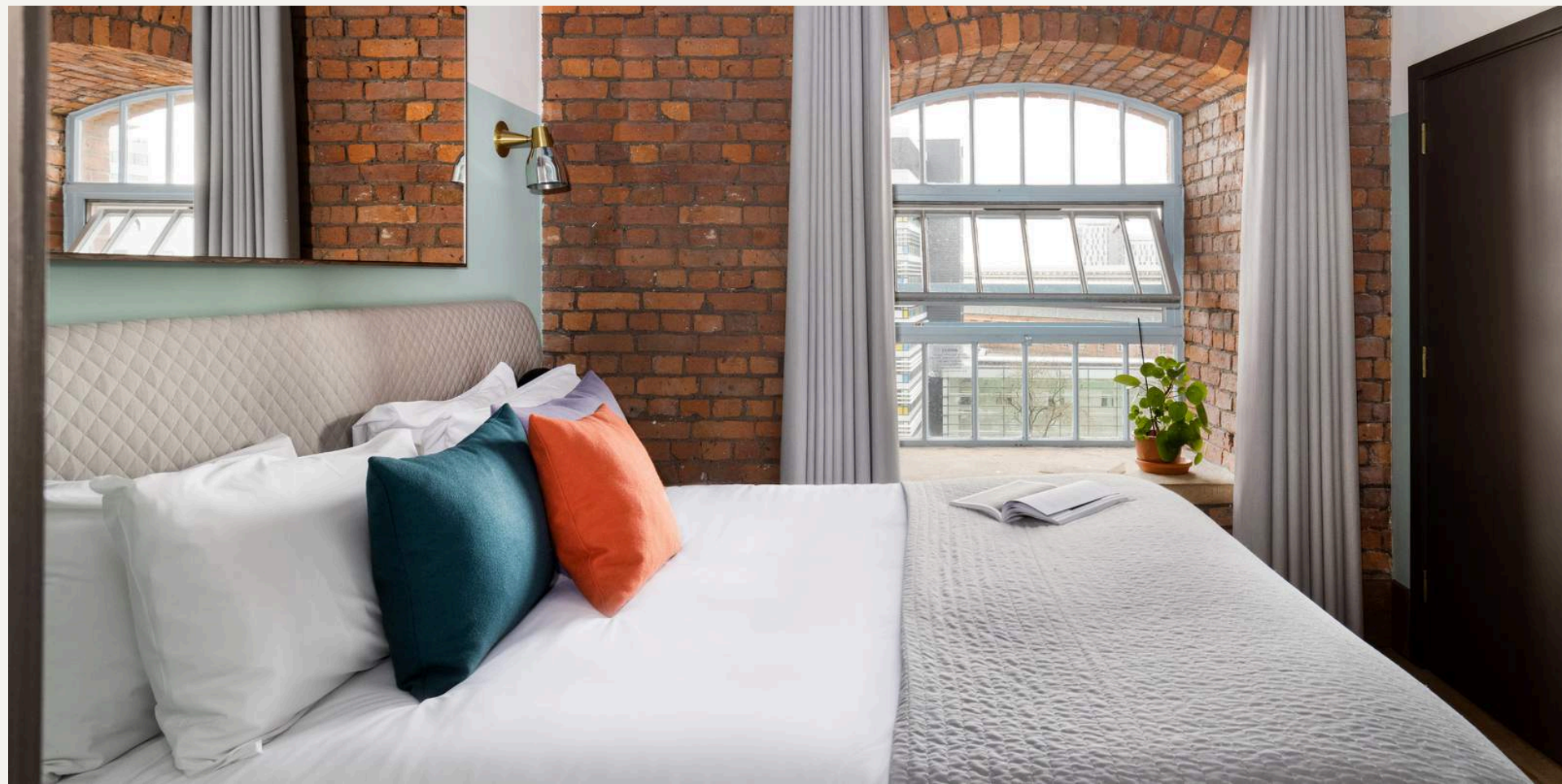
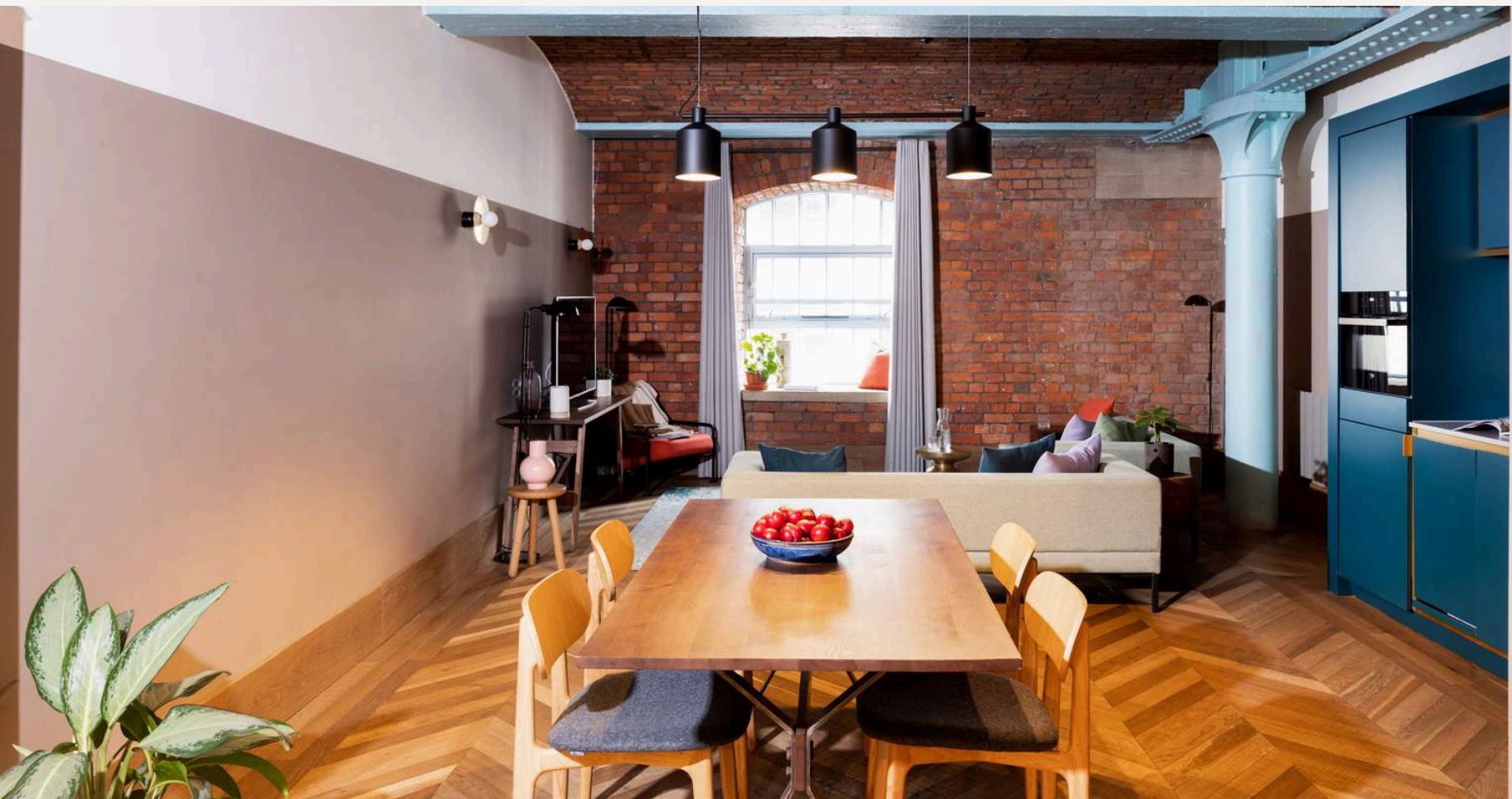


# NATIVE MANCHESTER ONE BED



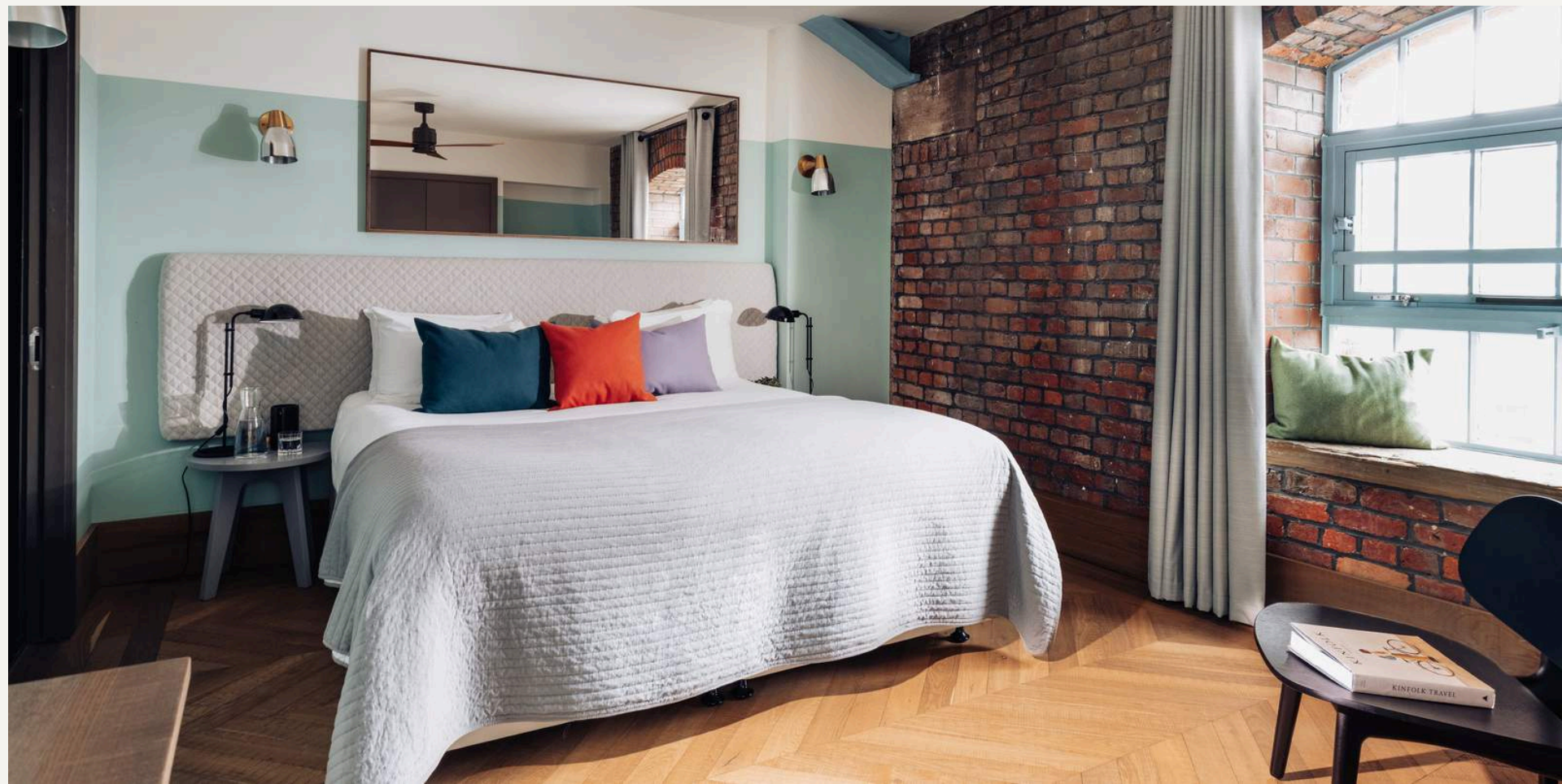


# NATIVE MANCHESTER TWO BED





# NATIVE MANCHESTER LOFT





# NATIVE MANCHESTER PENTHOUSE





# NATIVE MANCHESTER PENTHOUSE EVENT SPACE





# DUCIE STREET WAREHOUSE

DSW is the place to hang out, meet pals, watch a film and hear good music, or listen to a talk, take a class, engage in considered discussion and debate, get some work done. There's room for everyone to follow their own path; engage or unwind, socialise, graze, dine and drink.

## At a Glance

Counter

Lounge

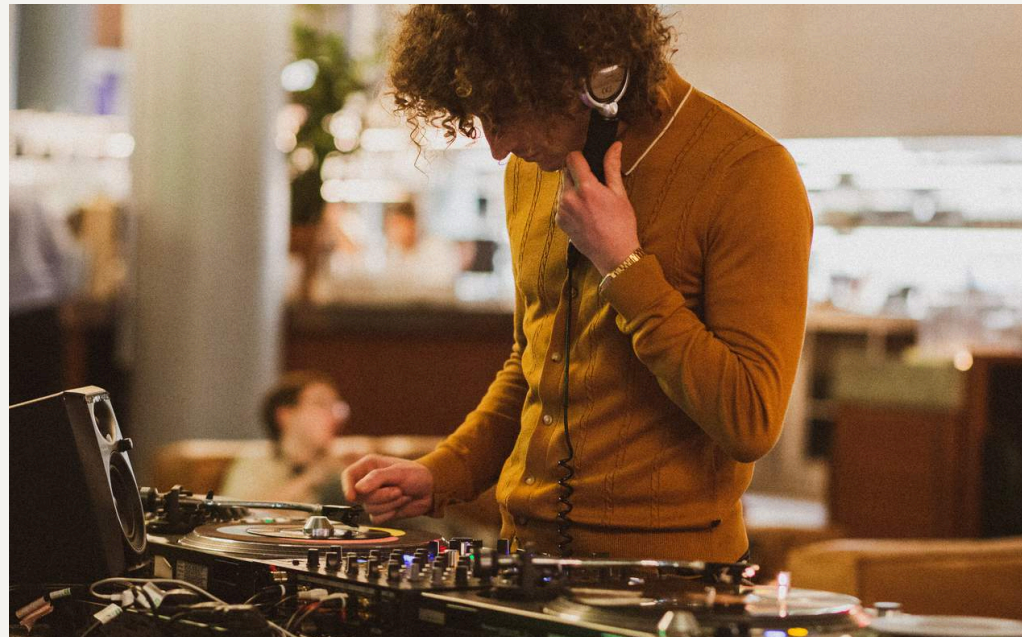
43 One Beds

26 Premium One Beds

The Library

Meeting room one

Meeting room Two/  
Three





# NATIVE GLASGOW





APARTMENT

# NATIVE GLASGOW

## WHAT.

64 apartments sit within a beautiful Edwardian building that was formerly the headquarters of the Anchor Line Shipping Company (a transatlantic passenger service founded in 1855). Our design takes inspiration from this and the opulence of a 1920s ocean liner.

## BEST BITS.

24-hour reception, two on-site restaurants, and George Square on your doorstep. In the rooms we've kept original features intact - with terrazzo flooring, timber wall panelling, stunning fireplaces, and original safes sitting pretty.

## LOCATION.

14 St Vincent Pl, Glasgow G1 2EU

🚶 Queen Street Station 1 minutes

🚶 Glasgow Central Station 7 minutes

## AT A GLANCE.

Click the property type to view 3D tour

[10 Studios](#)

[26 Premium Studios](#)

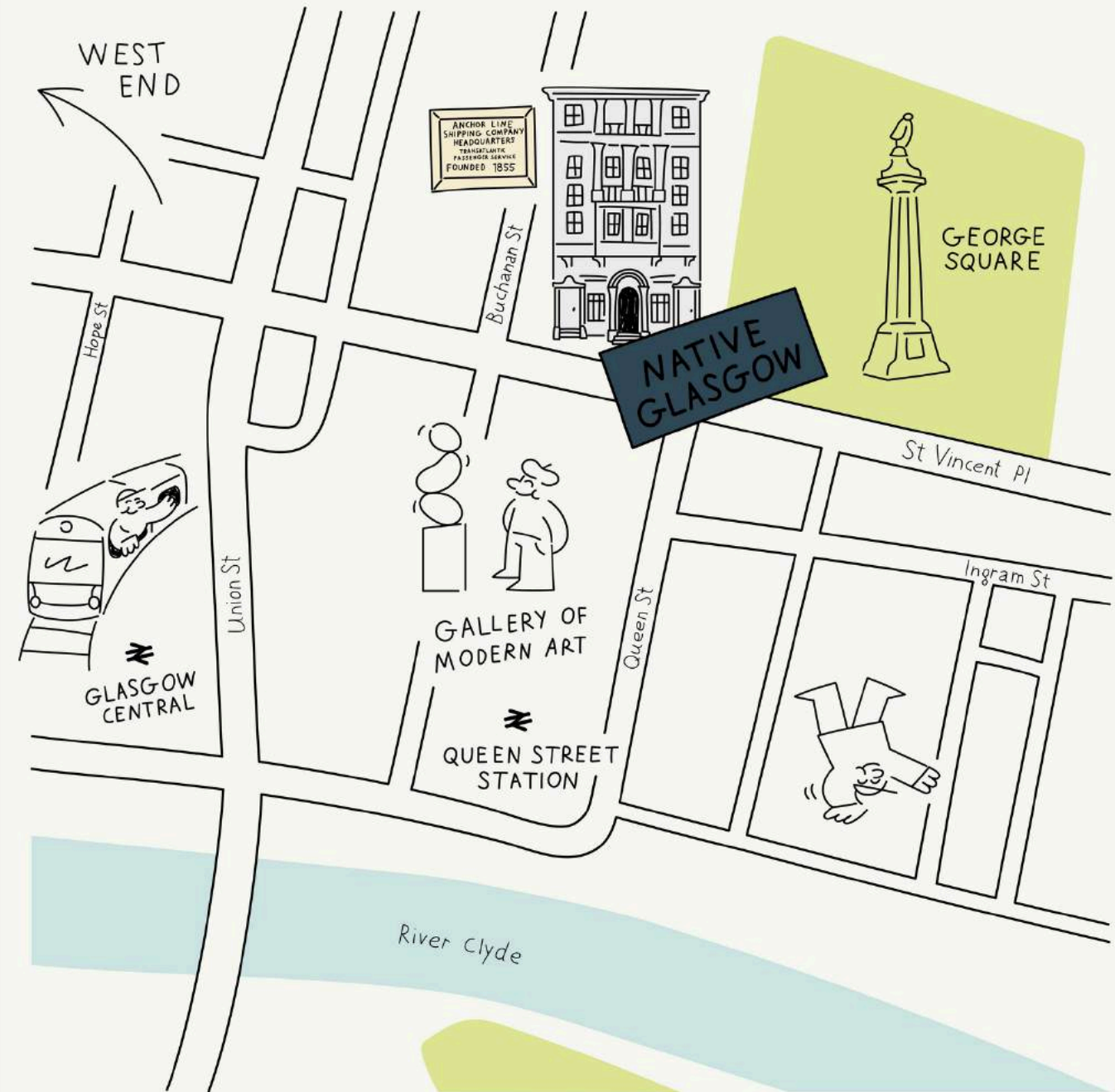
[6 Open Plan One Beds](#)

[7 One Beds](#)

[8 Premium One Beds](#)

[2 One Bed Penthouses](#)

[5 Studio Penthouses](#)



Explore our  
**Neighbourhood Heroes.**



# NATIVE GLASGOW PREMIUM STUDIO



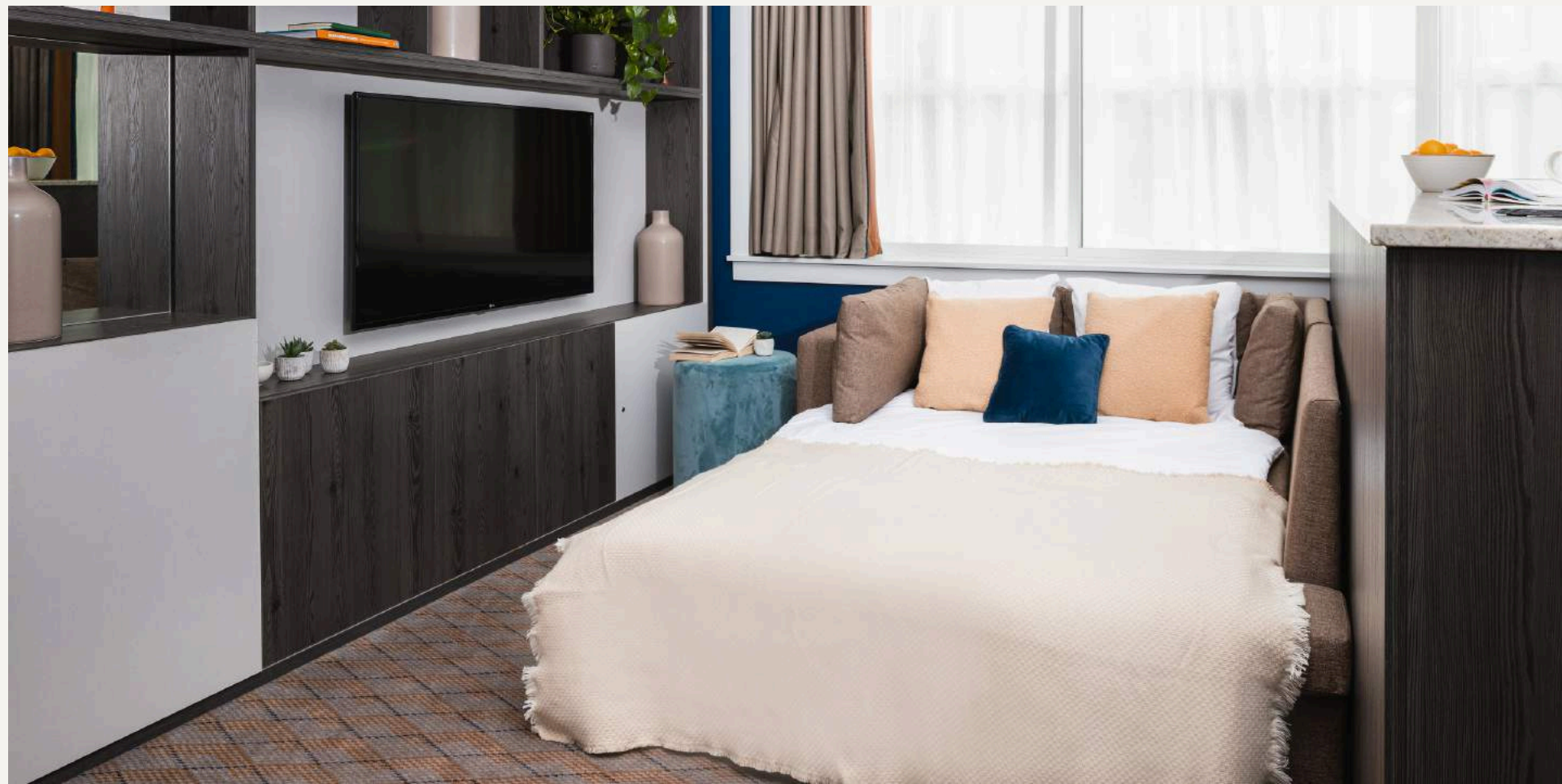
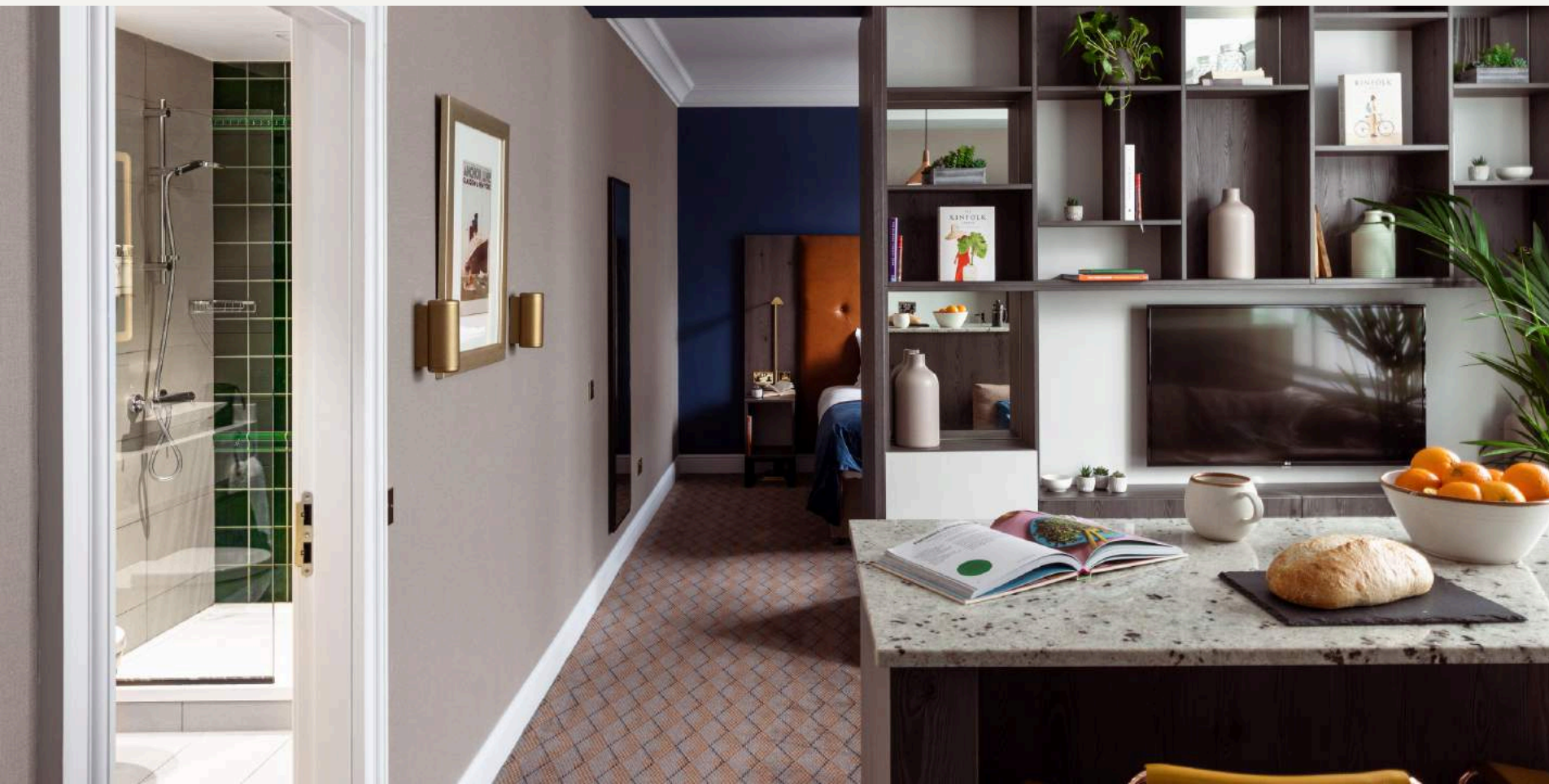


# NATIVE GLASGOW STUDIO





# NATIVE GLASGOW OPEN PLAN ONE BED





# NATIVE GLASGOW ONE BED



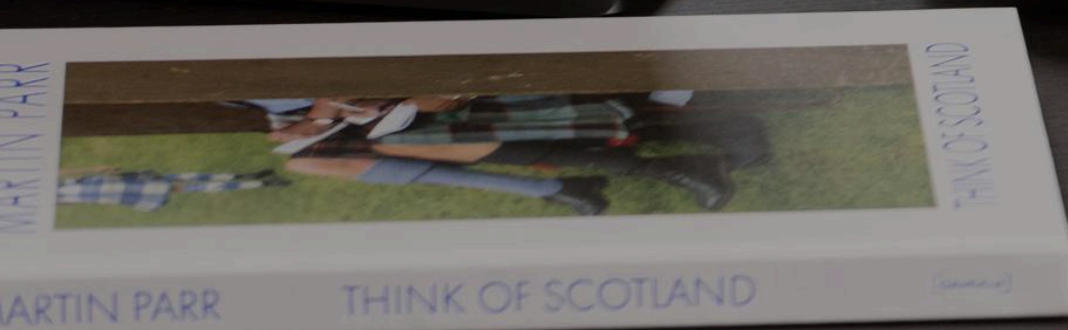


# NATIVE GLASGOW PENTHOUSE





# NATIVE EDINBURGH





APARTMENT

# NATIVE EDINBURGH

## WHAT.

*Fully serviced apartments in the heart of Edinburgh's New Town, a UNESCO World Heritage Site. Our building is the perfect example of the Neoclassical and Georgian architecture in the area.*

## BEST BITS.

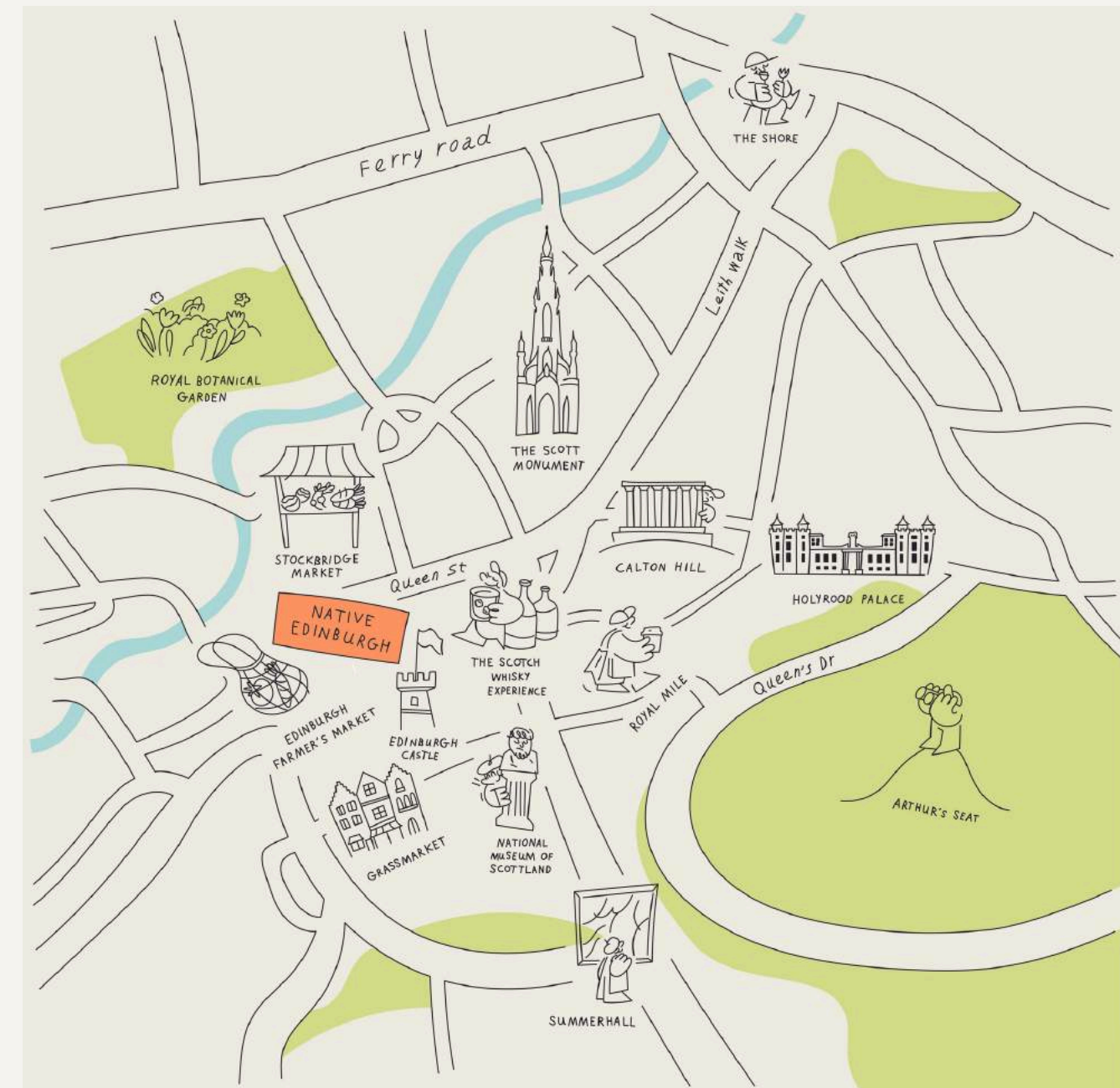
*Native Edinburgh's enviable location on Queen Street means you're walking distance from world-famous sights like Edinburgh Castle and Princes Street Gardens, and transport links like Haymarket and Waverley train stations.*

## LOCATION.

*74-77 Queen St, Edinburgh EH2 4NF*

 *Waverley Train Station 10 minutes*

 *Haymarket Train Station 12 minutes*



## AT A GLANCE.

*33 Studios*

*36 One Beds*

*13 Premium One Bed*



**Explore our  
Neighbourhood Heroes.**



# NATIVE EDINBURGH STUDIO





# NATIVE EDINBURGH ONE BED





NATIVE EDINBURGH

# COUNTER

The Counter at Native Edinburgh is home to a curation of eclectic drinks and events, highlighting local produce in the daytime and spotlighting local talent at night.

From neo-soul jazz nights to spoken word poetry, the venue will shine a light on up-and-coming creatives from around the city, including artists, writers, musicians and more.



## WHAT'S ON

- Co- working
- Breakfast
- lunch
- Cocktails
- Programming







NATIVE  
KING'S  
WARDROBE





**Wine & Dine.**  
Corduroy with Nails

**Neighbourhood Heroes.**  
ECONOMY  
...and you can't walk  
...the way you used to  
...a lot of people are  
...a lot of people are  
...a lot of people are

**Extra Info.**  
...and you can't walk  
...the way you used to  
...a lot of people are  
...a lot of people are  
...a lot of people are

**Welcome to  
King's Wardrobe.**  
NATIVE

**LET'S GO!**

Peter Lindbergh  
A Different  
View on Fashion  
Photography



APARTMENT

# THE KING'S WARDROBE, ST. PAUL'S

## WHAT.

Set in a historic district a 3-minute walk from St Paul's Cathedral, this spacious ApartHotel is within walking distance to Millennium Bridge, Tate Modern, Shakespeare's Globe Theatre and other London attractions.

## BEST BITS.

Connected to sites and neighbourhoods across the city and a short stomp from Bankside's best bits. Hop on a tube and effortlessly journey to the vibrant lights of Soho or the urban charm of Shoreditch.

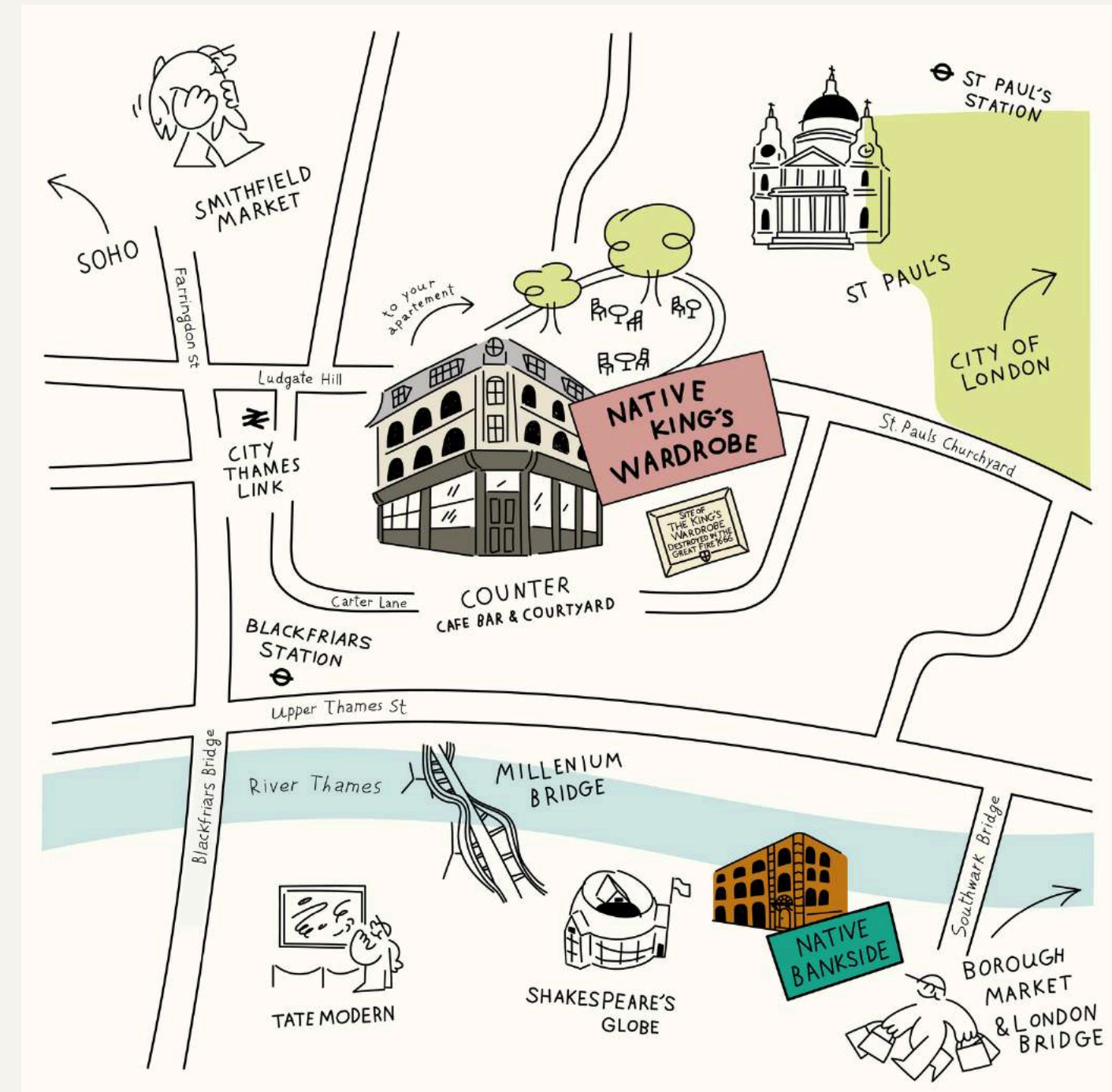
## LOCATION.

53-55 Carter Lane London EC4V 5AF

 Blackfriars 5 mins Walk

 St Pauls 5 mins Walk

 Mansion House 5 mins Walk



## AT A GLANCE.

Click the property type to view 3D tour

[Studio](#)

[One Bedroom](#)

[Two Bedroom](#)

[Three Bedroom](#)

[Courtyard](#)



Explore our  
Neighbourhood Heroes.



# THE KING'S WARDROBE STUDIO





# THE KING'S WARDROBE ONE BED





# THE KING'S WARDROBE TWO BED





NATIVE KING'S WARDROBE

# COUNTER

## CAFÉ BAR & COURTYARD



Located in the heart of St. Paul's on the vibrant Carter Lane, Counter Café Bar & Courtyard at Native King's Wardrobe embodies the fusion of a chic deli and a cosy neighbourhood eatery, promising to be a hub of culinary delights and community engagement.

By day, guests are invited to indulge in a captivating selection of locally sourced delicacies, artisanal pastries, and refreshing beverages. At dusk, the place transforms into a homely bar, where locals and guests can enjoy intimate dinners, wine, beers, and cocktails.







# NATIVE BANKSIDE





APARTMENT

# NATIVE BANKSIDE

## WHAT.

Found on a cobbled street, tucked back from the Thames, this revived warehouse is full of rooms with original features and history.

## BEST BITS.

Central, accessible, and with its own fitness suite with Peloton bike. Native Bankside is a homely retreat from the hustle and haste of outside's entertainment.

## LOCATION.

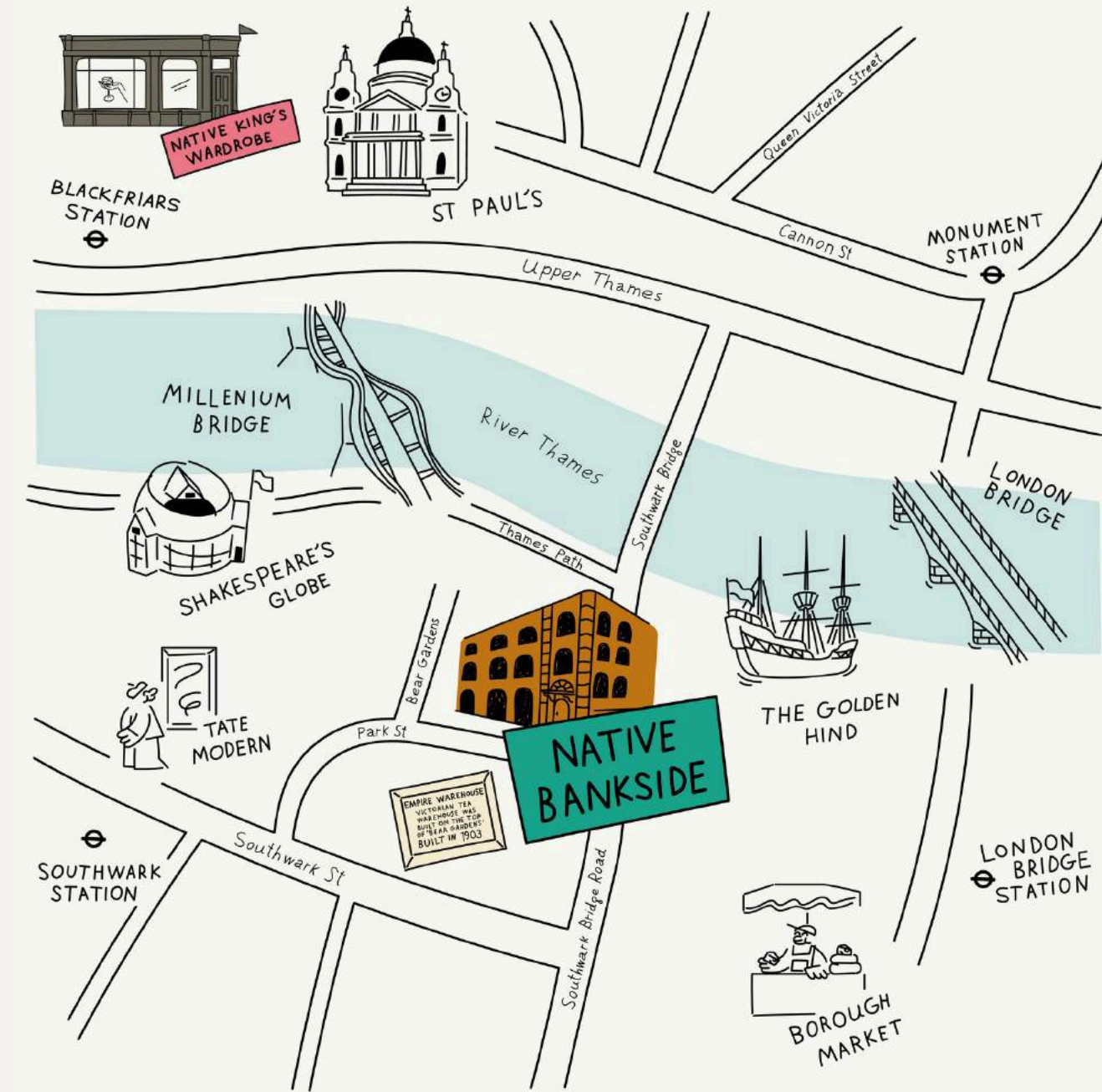
Empire Warehouse, 1 Bear Gardens, London SE1 9ED



London Bridge 8 minutes



Southwark 8 minutes



## AT A GLANCE.

Click the property type to view 3D tour

5 Crash Pads

16 One Beds

12 Studios

8 Premium One Beds

32 Premium Studios

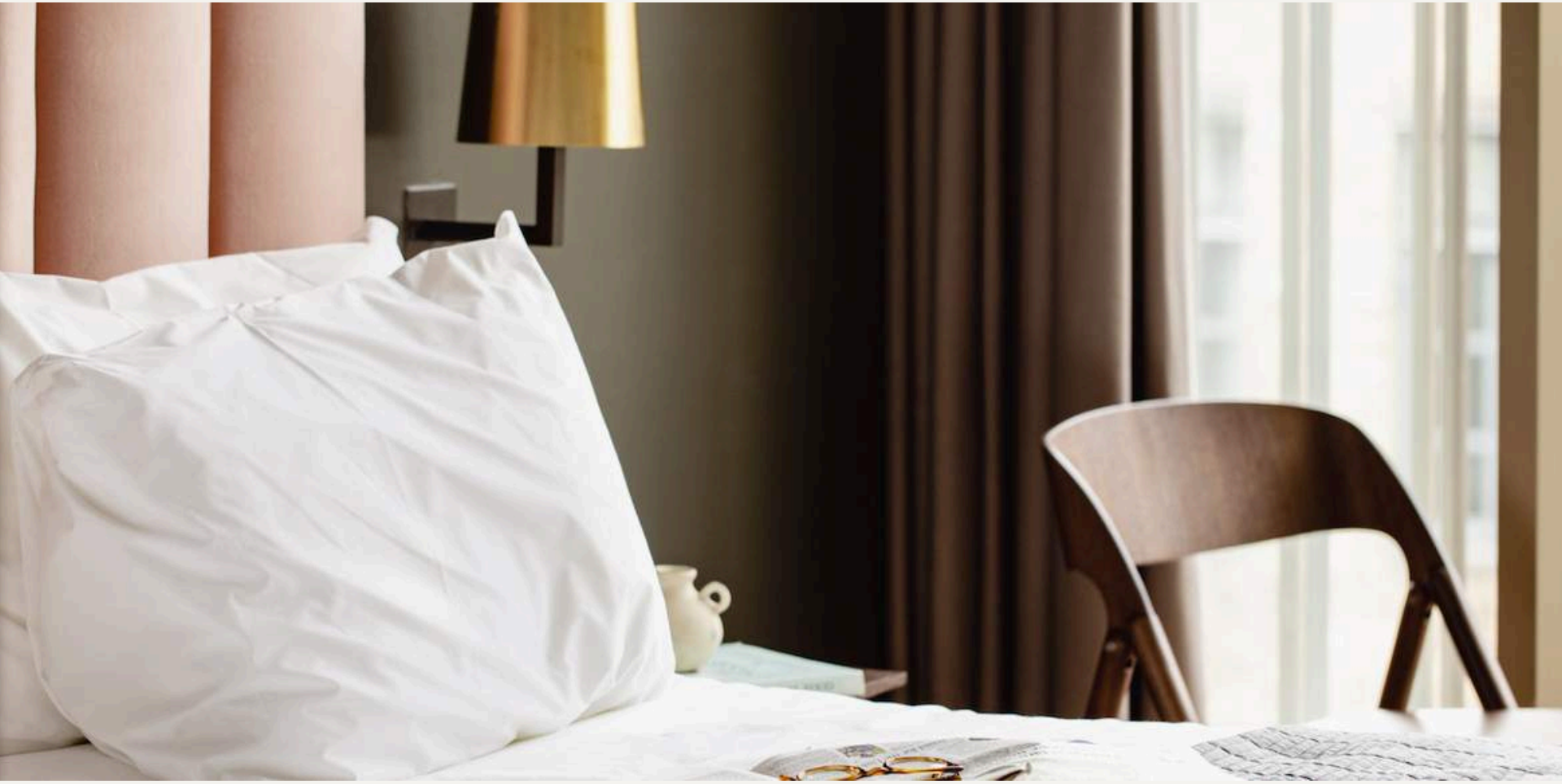
1 Two Bed



Explore our  
Neighbourhood Heroes.

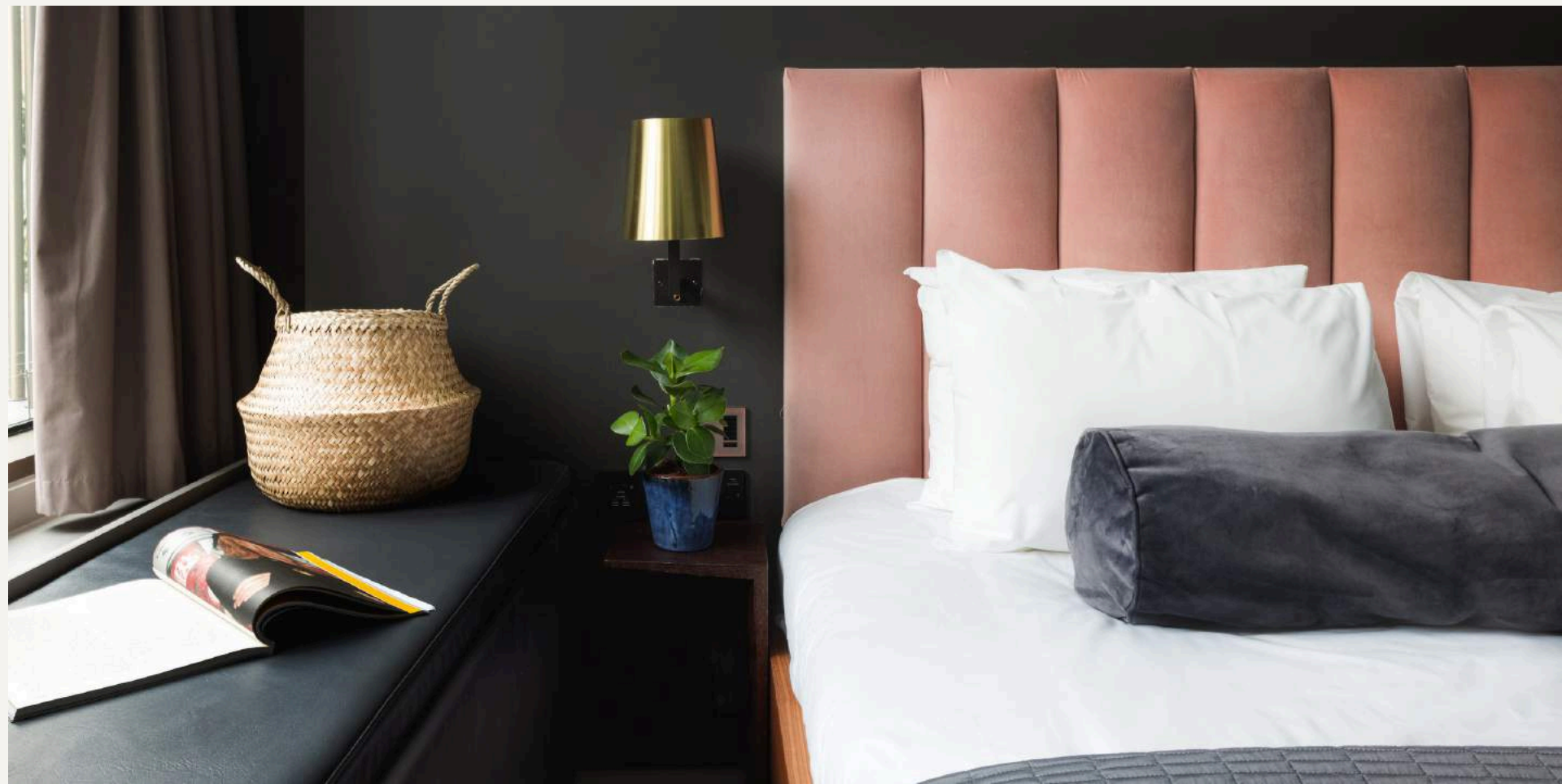
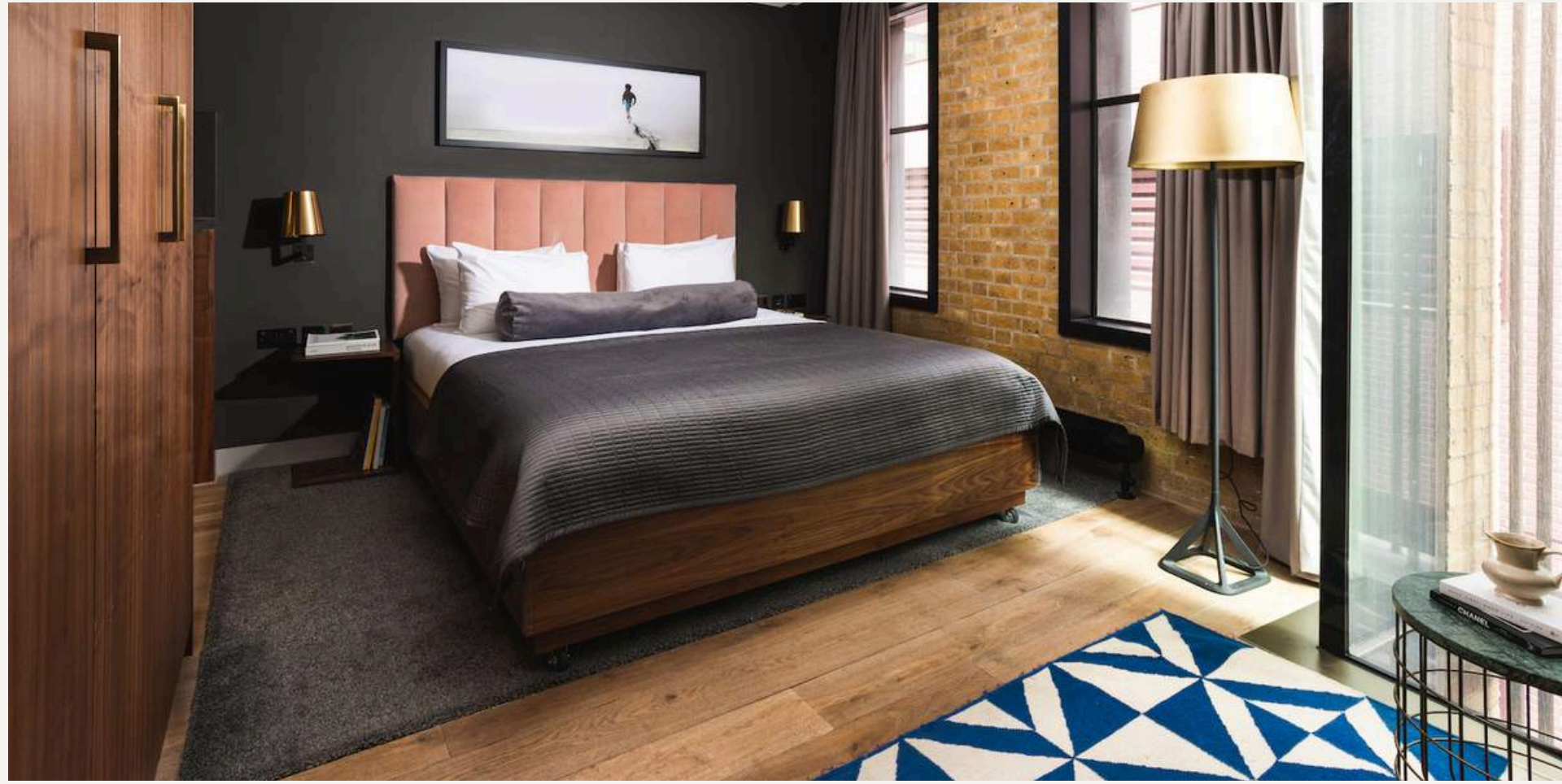


# NATIVE BANKSIDE CRASHPAD



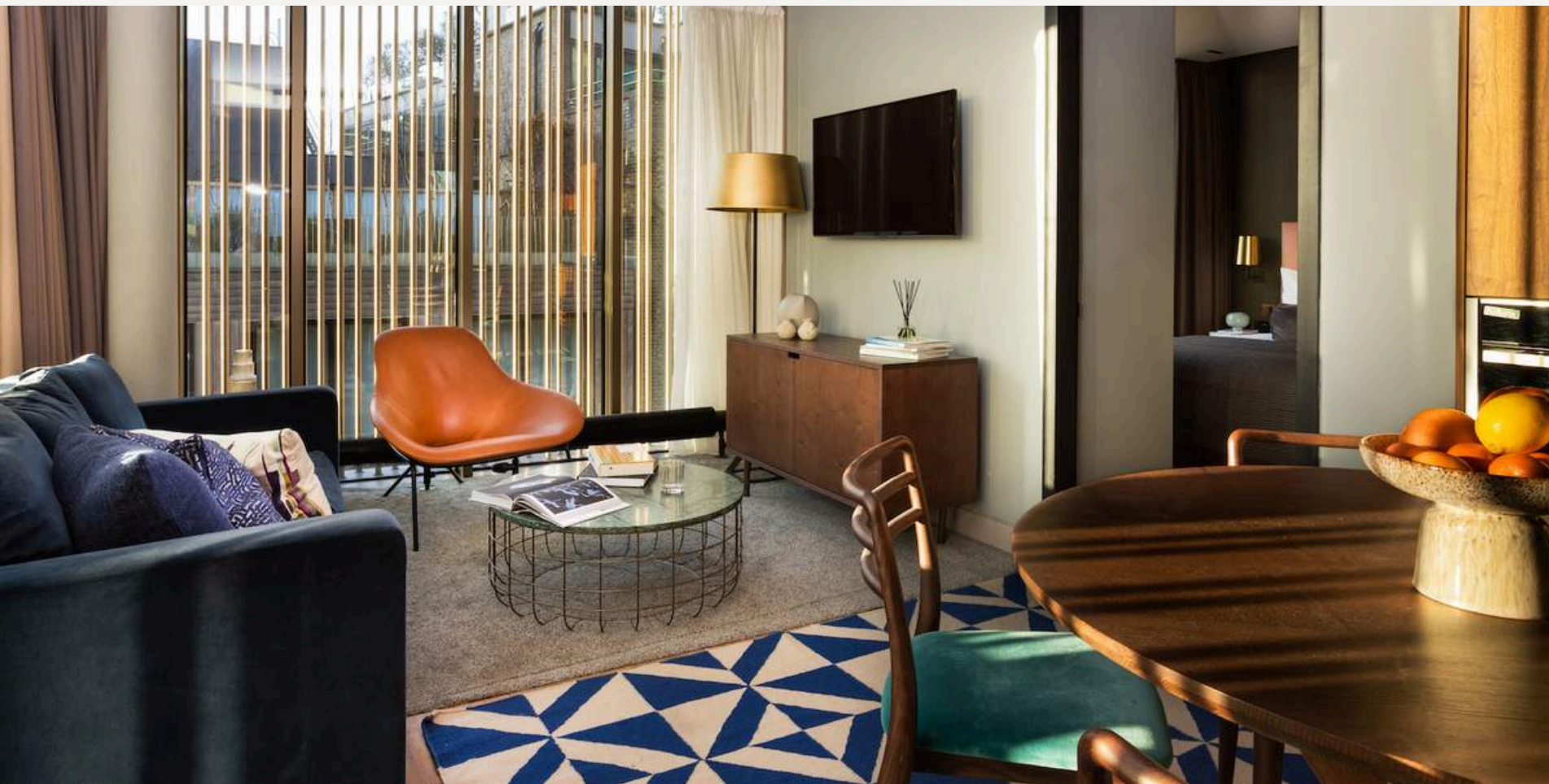


# NATIVE BANKSIDE STUDIO



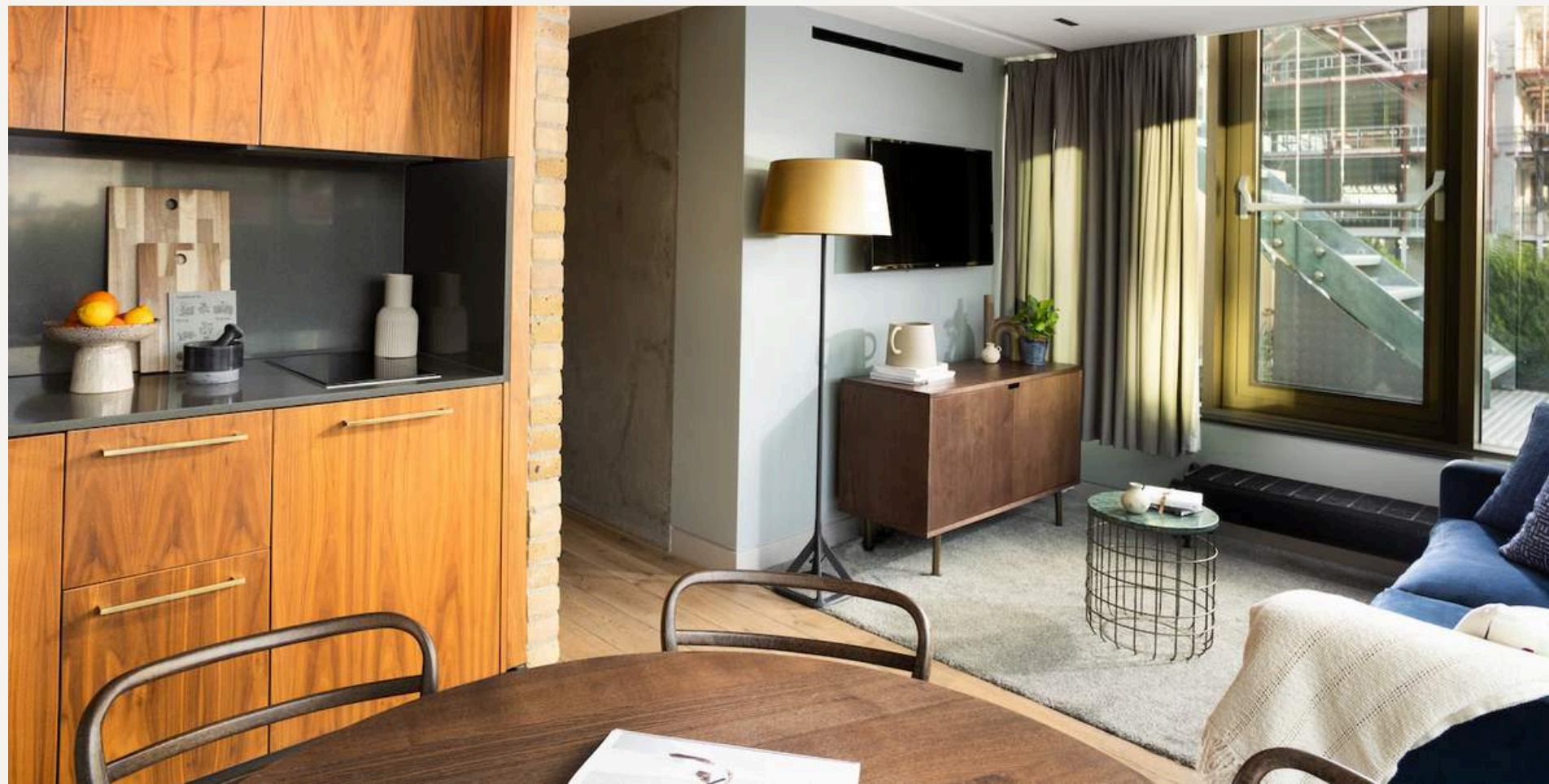


# NATIVE BANKSIDE ONE BED



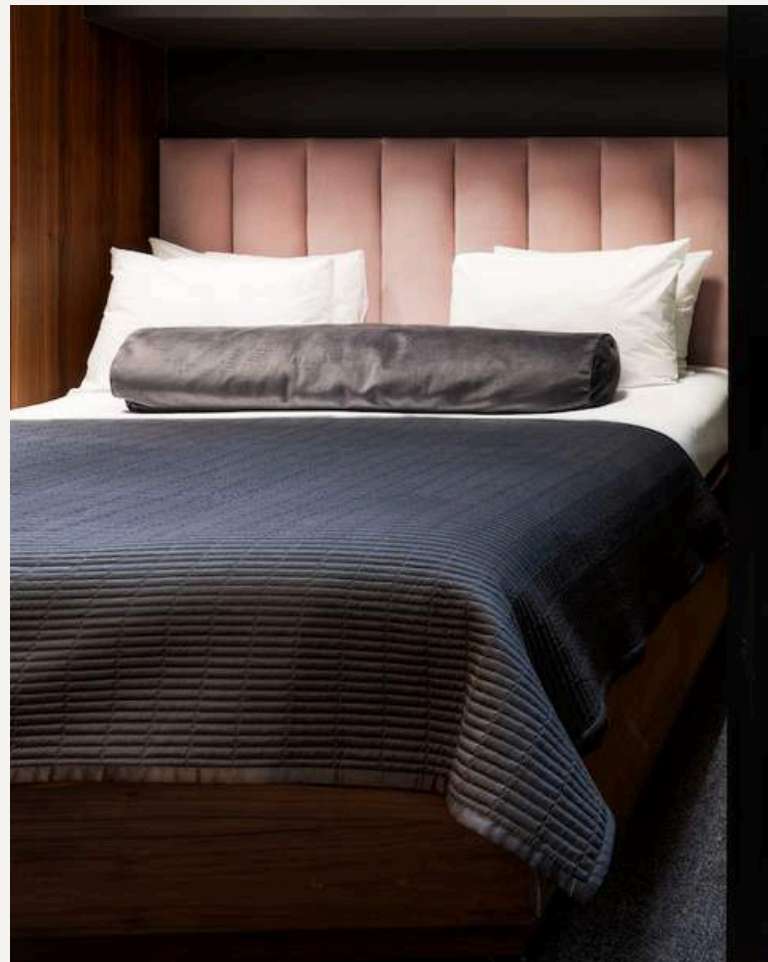
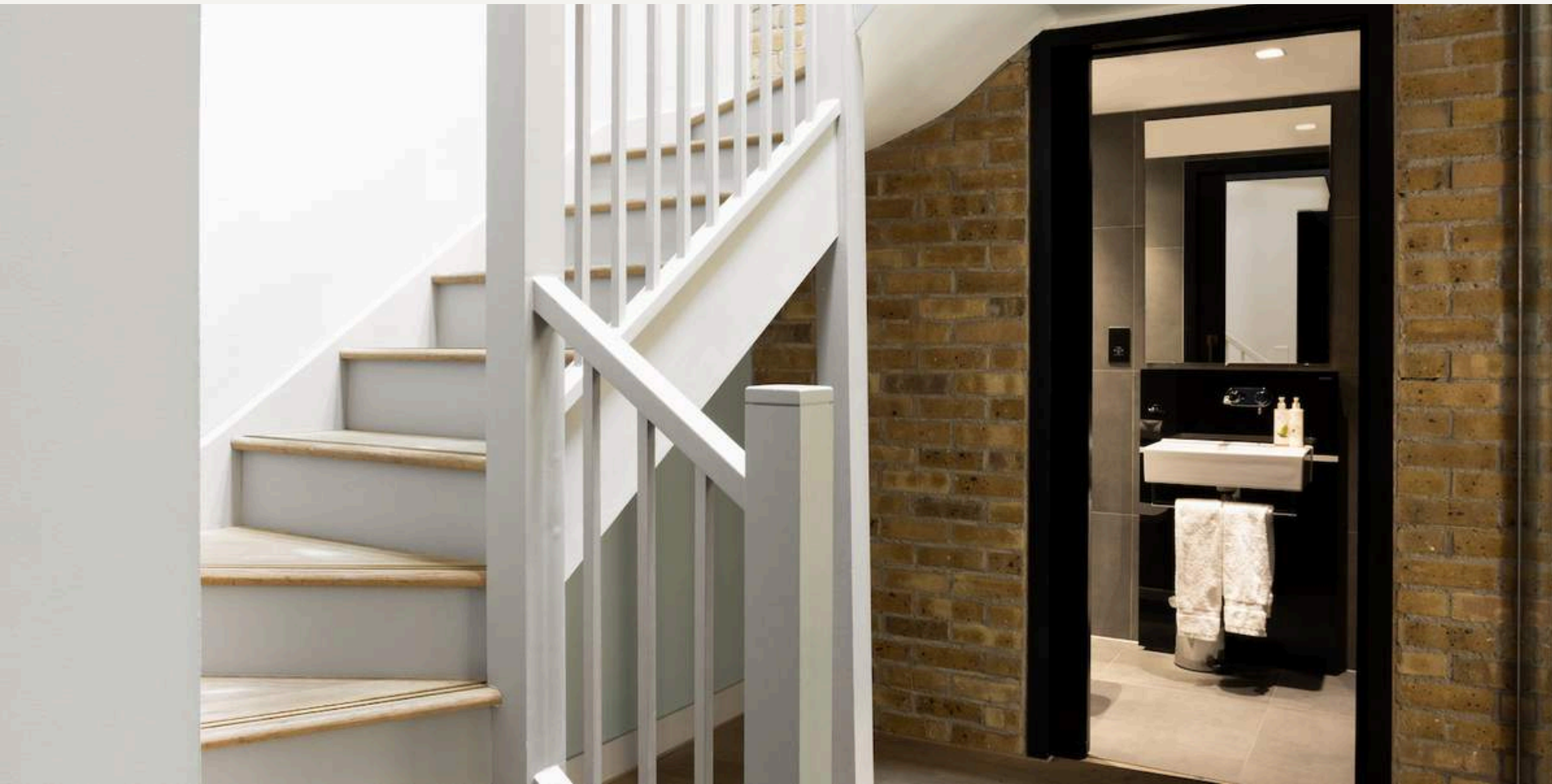


# NATIVE BANKSIDE PREMIUM ONE BED





# NATIVE BANKSIDE TWO BED





A person with long, reddish-brown hair is seen from behind, wearing a light-colored trench coat and holding a transparent umbrella. The umbrella is covered in raindrops, and rain is falling around the person. The background is a blurred outdoor setting with trees and a path. The text "NATIVE HYDE PARK" is overlaid in the center in a white, bold, sans-serif font.

**NATIVE  
HYDE PARK**



APARTMENT

# NATIVE HYDE PARK

## WHAT.

*A beautiful Grade II listed property overlooking Sussex Gardens with apartments that fit all sizes and needs.*

## BEST BITS.

*Set over six floors, with original features and large windows running throughout, our 24/7 on-site team will get you settled into London life.*

## LOCATION.

*206-214 Sussex Gardens, Tyburnia, London W2 3UA*



*London Paddington 5 minutes*



*Lancaster Gate 5 minutes*

## AT A GLANCE.

*Click the property type to view 3D tour*

*3 Crash Pads*

*4 Studios*

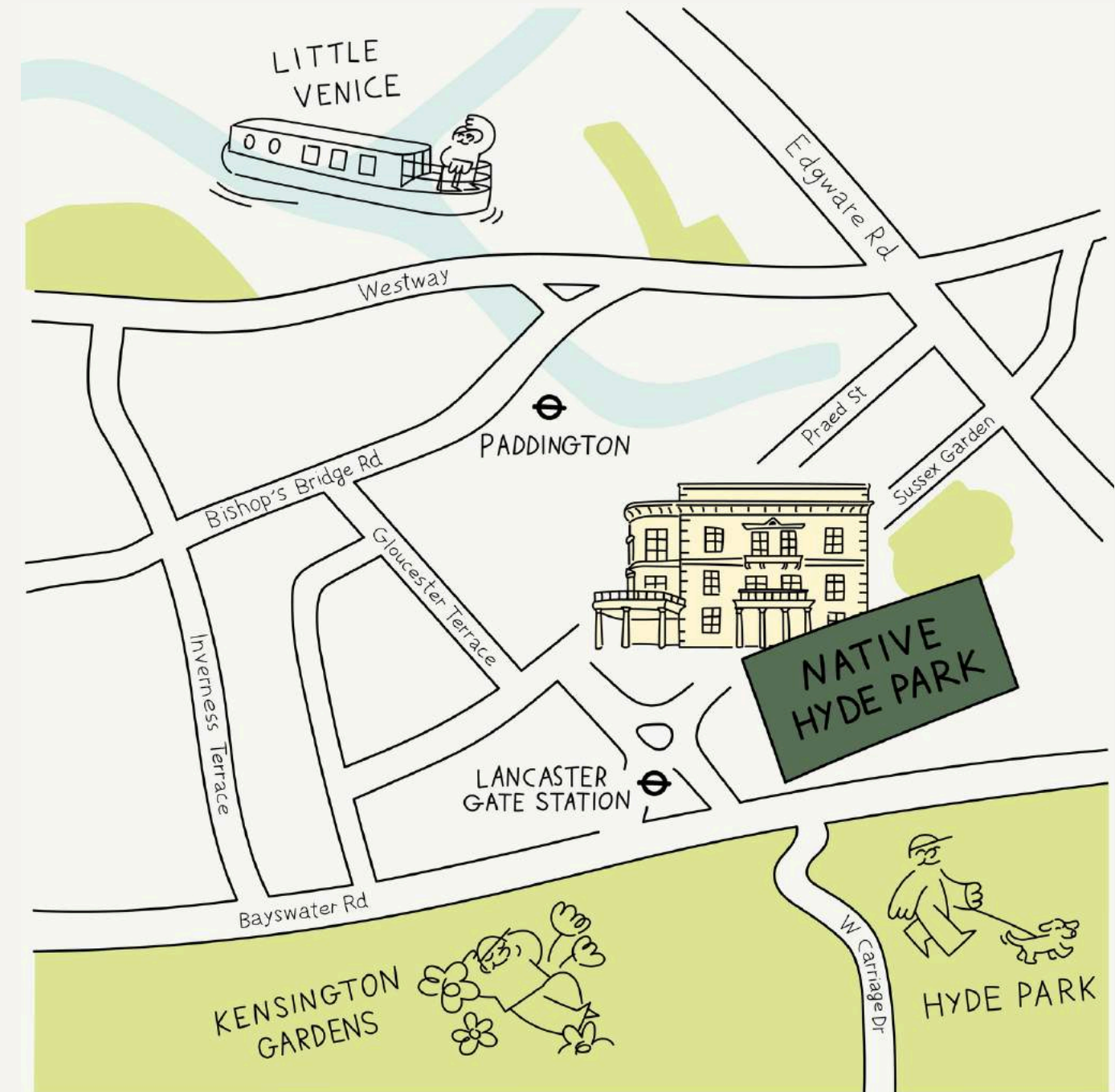
*16 Premium Studios*

*19 One Beds*

*16 Premium One Beds*

*3 Two Beds*

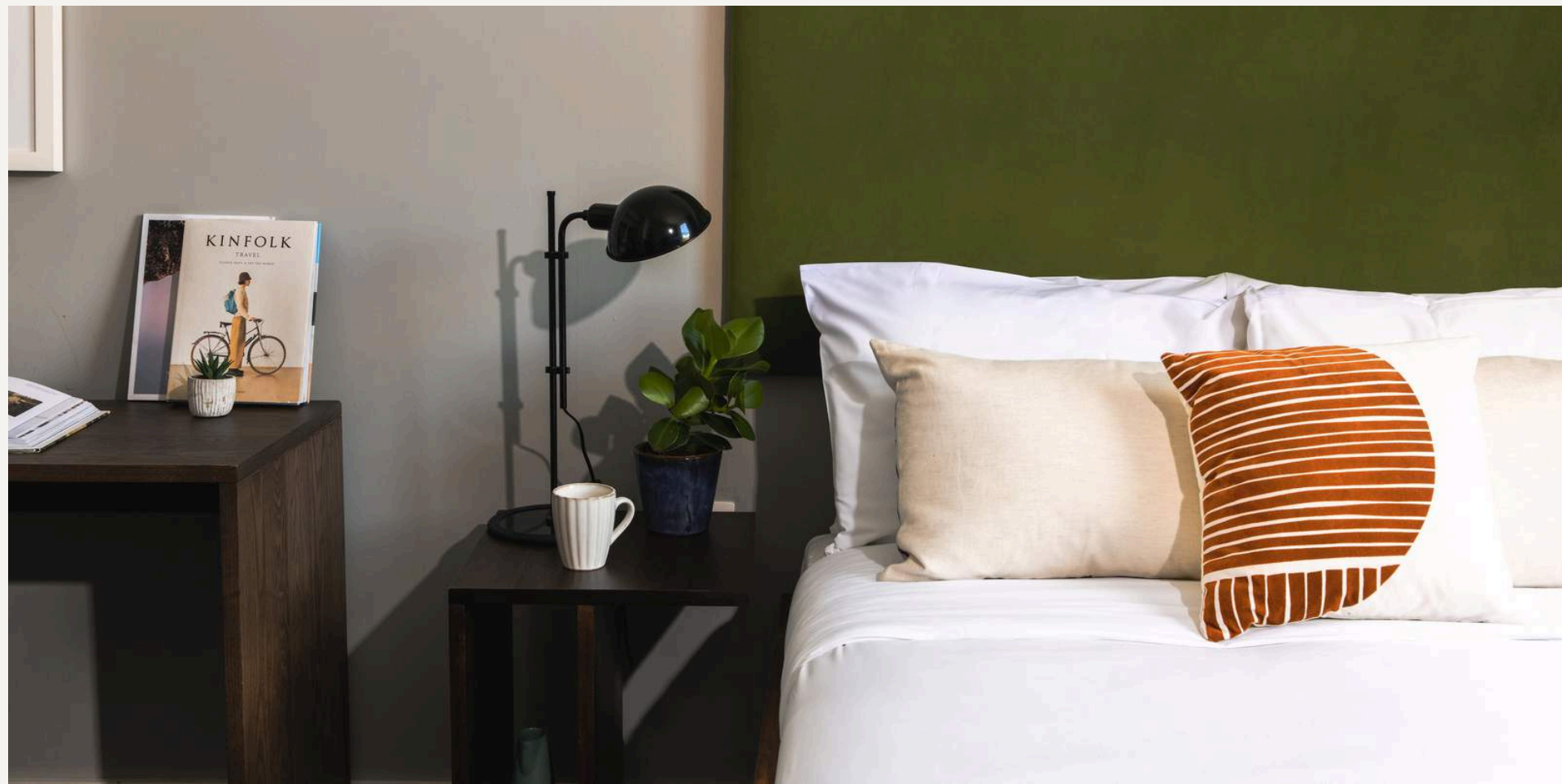
*1 Concept Two Beds*



**Explore our  
Neighbourhood Heroes.**

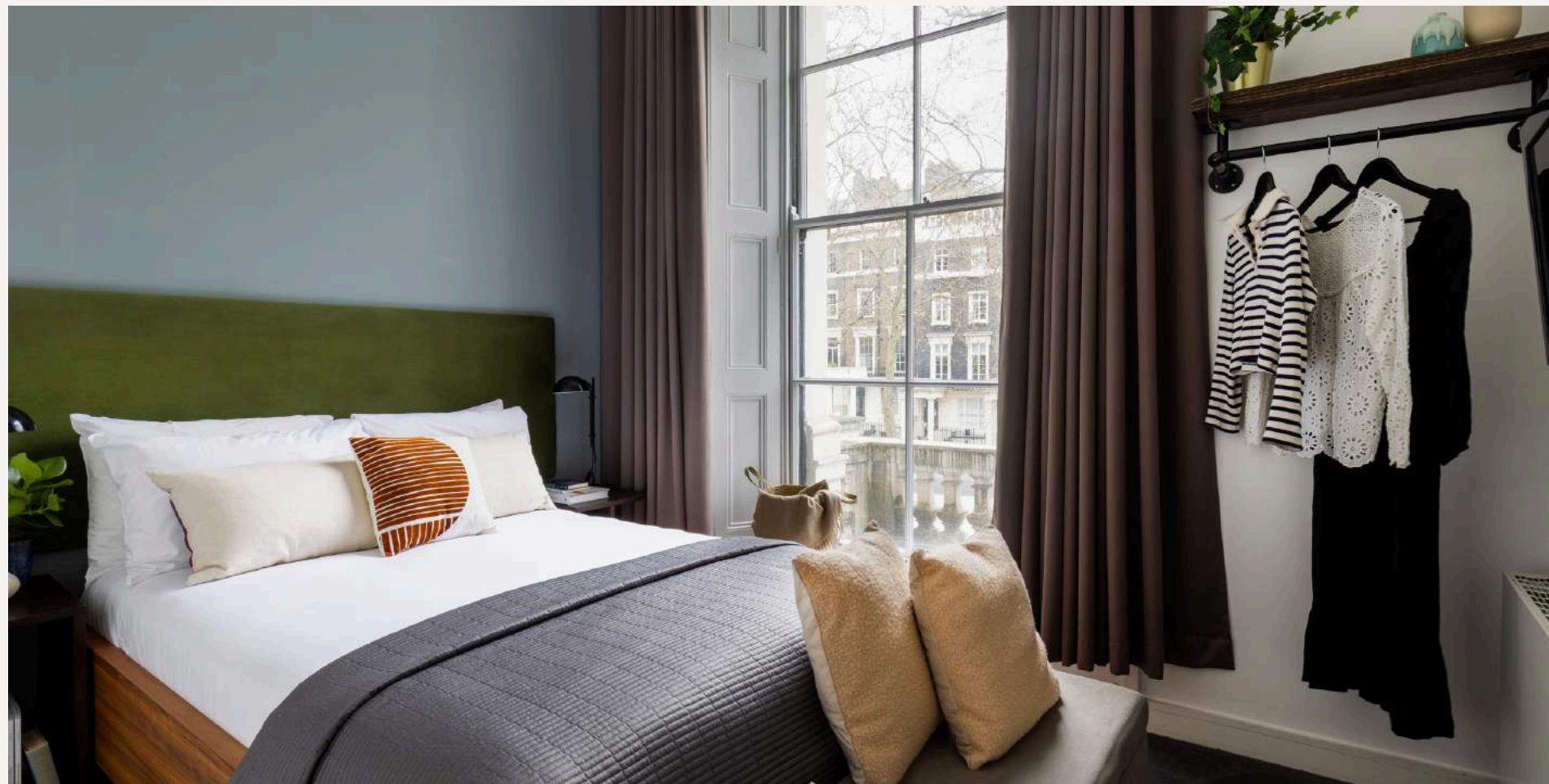


# NATIVE HYDE PARK STUDIO



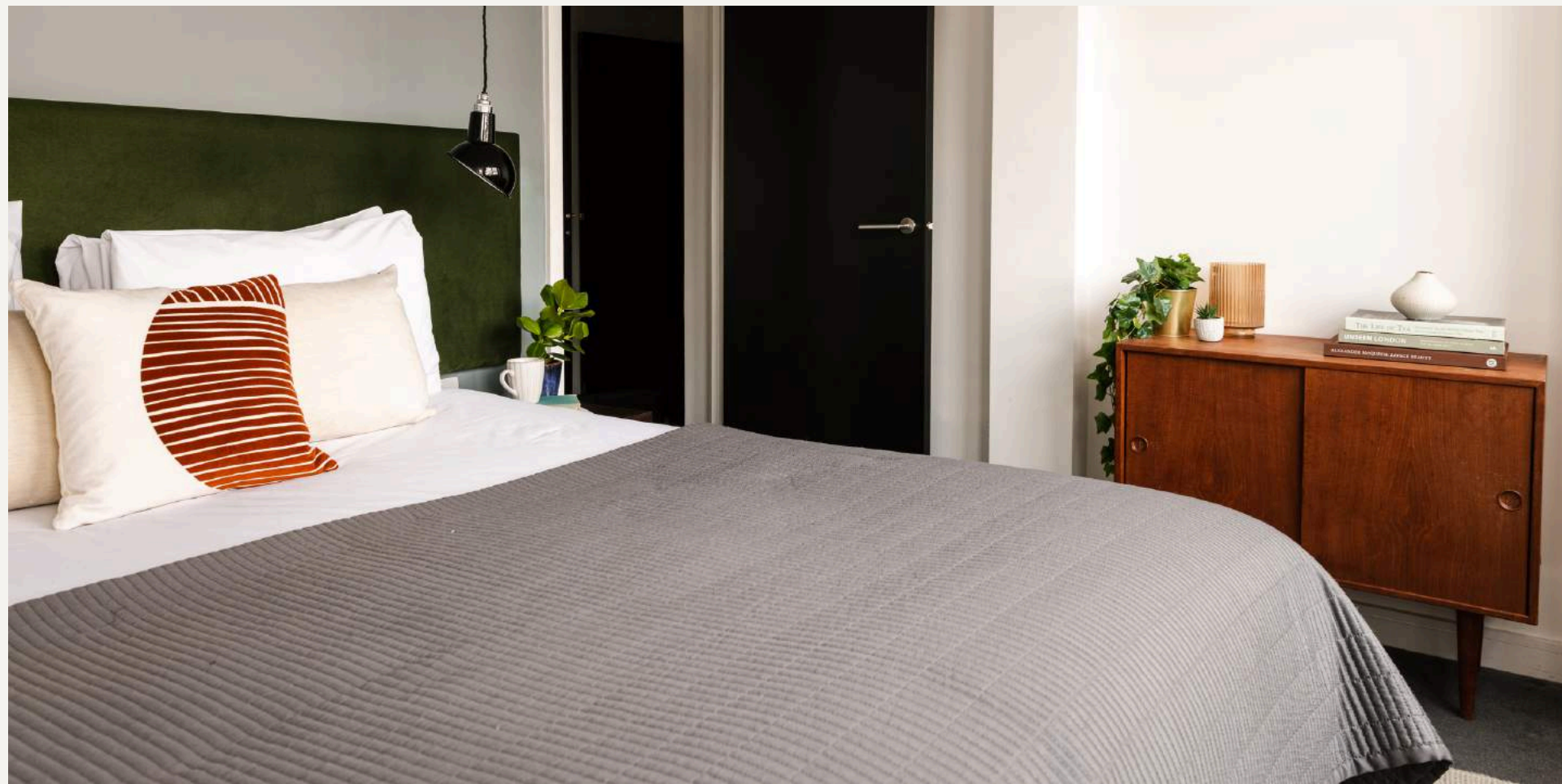


# NATIVE HYDE PARK ONE BED



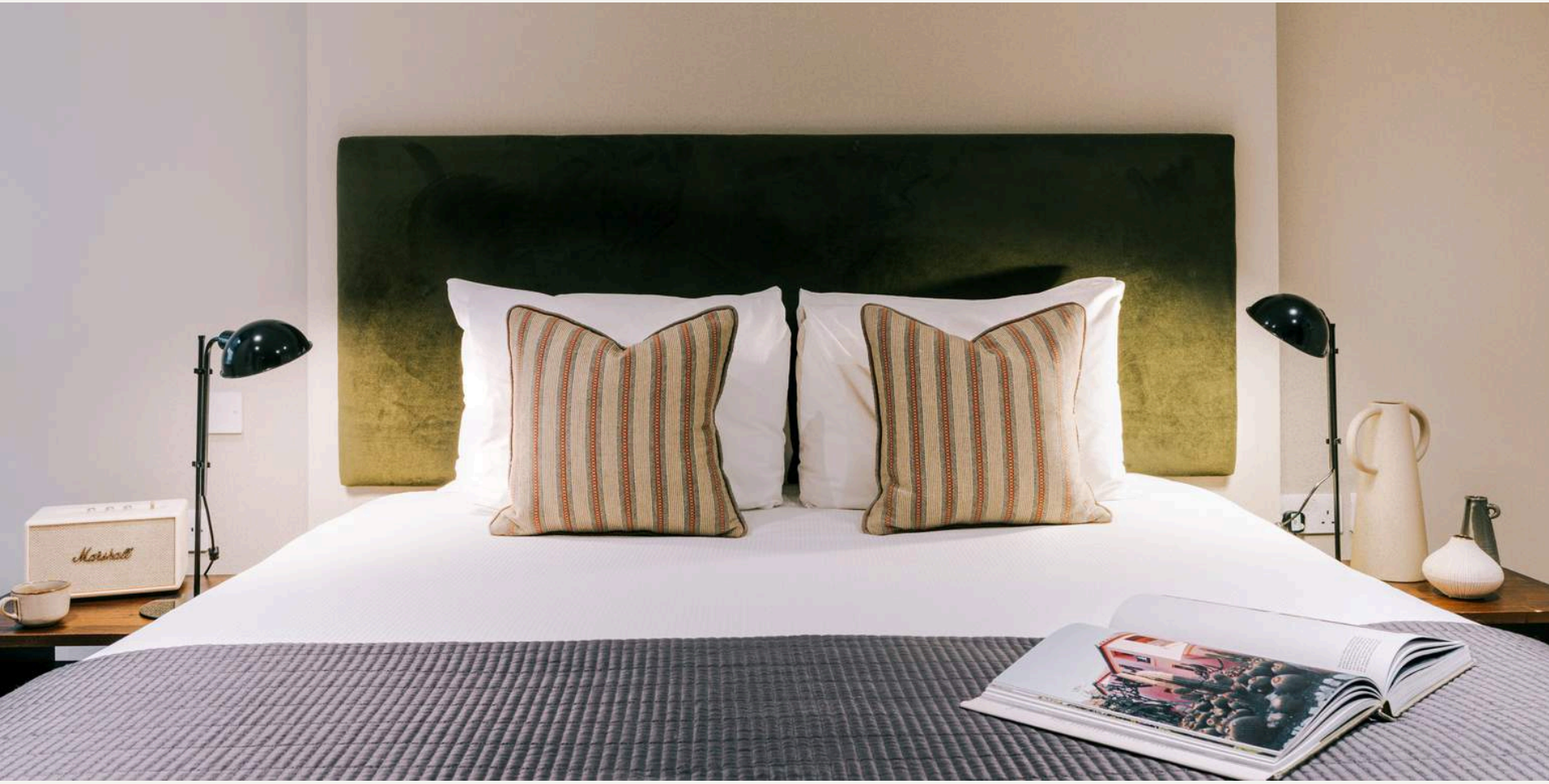


# NATIVE HYDE PARK TWO BED





# NATIVE HYDE PARK CONCEPT TWO BED







**NATIVE  
MAYFAIR**



APARTMENT

# NATIVE MAYFAIR

## WHAT.

*Tucked away on the quiet Lees Place passage, this Victorian mews house is home to 11 exclusive apartments that offer modern British style in London's most upscale neighbourhood.*

## BEST BITS.

*Head to the boutiques of Burlington Arcade and New Bond Street. Take a table at the cafés and bars of Berkeley Square. Or treat yourself to a meal in one of Mayfair's high-end restaurants.*



## LOCATION.

10-12 Lees Pl, London W1K 6LL

 Marble Arch 6 minutes

 Bond Street 7 minutes

## AT A GLANCE.

*Click the property type to view 3D tour*

[2 One Bedrooms](#)      [2 Two Beds](#)

[6 Premium One Beds](#)   [1 Premium Two Beds](#)



**Explore our  
Neighbourhood Heroes.**



# NATIVE MAYFAIR ONE \ PREMIUM BED





# NATIVE MAYFAIR TWO \ PREMIUM BED





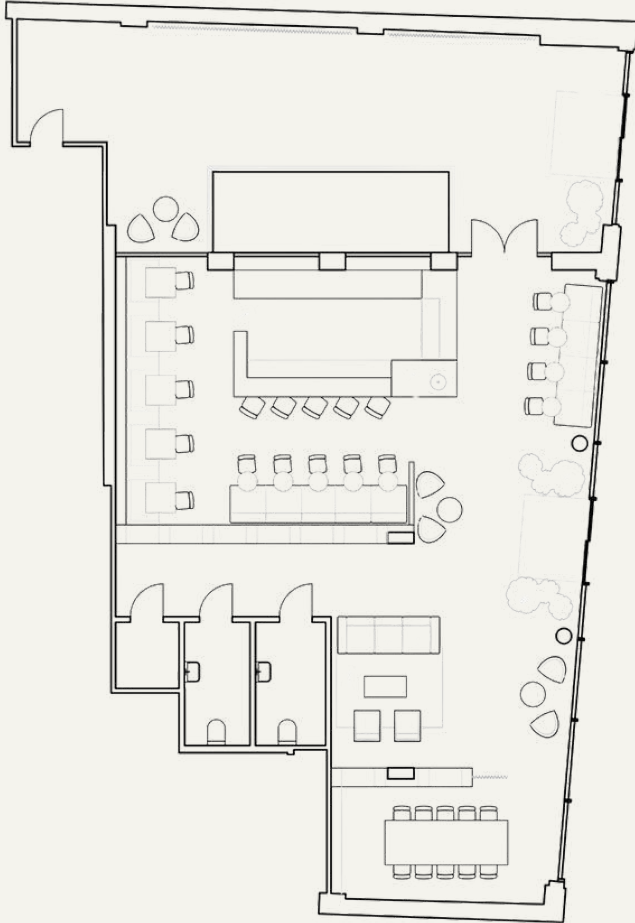
# NATIVE MAYFAIR PENTHOUSE





COMING SOON... 2025

# NATIVE FULHAM BROADWAY.



## COUNTER

*Counter at Native Fulham Broadway will highlight local produce in the daytime and spotlighting local talent at night.*



## LOCATION.

North End Rd, London SW6

 West Kensington 6 minutes

 Fulham Broadway 6 minutes



## WHAT.

*Inspired by area's market & vibrant West Brompton neighbourhood, Native Fulham Broadway promises a design that integrates building surroundings for an immersive community experience.*





Stay | Original

# The Apartment Collection

[theapartmentcollection.com](https://theapartmentcollection.com)  
[@theapartmentcollection](https://www.instagram.com/theapartmentcollection)

Hand picked by

**NATIVE**

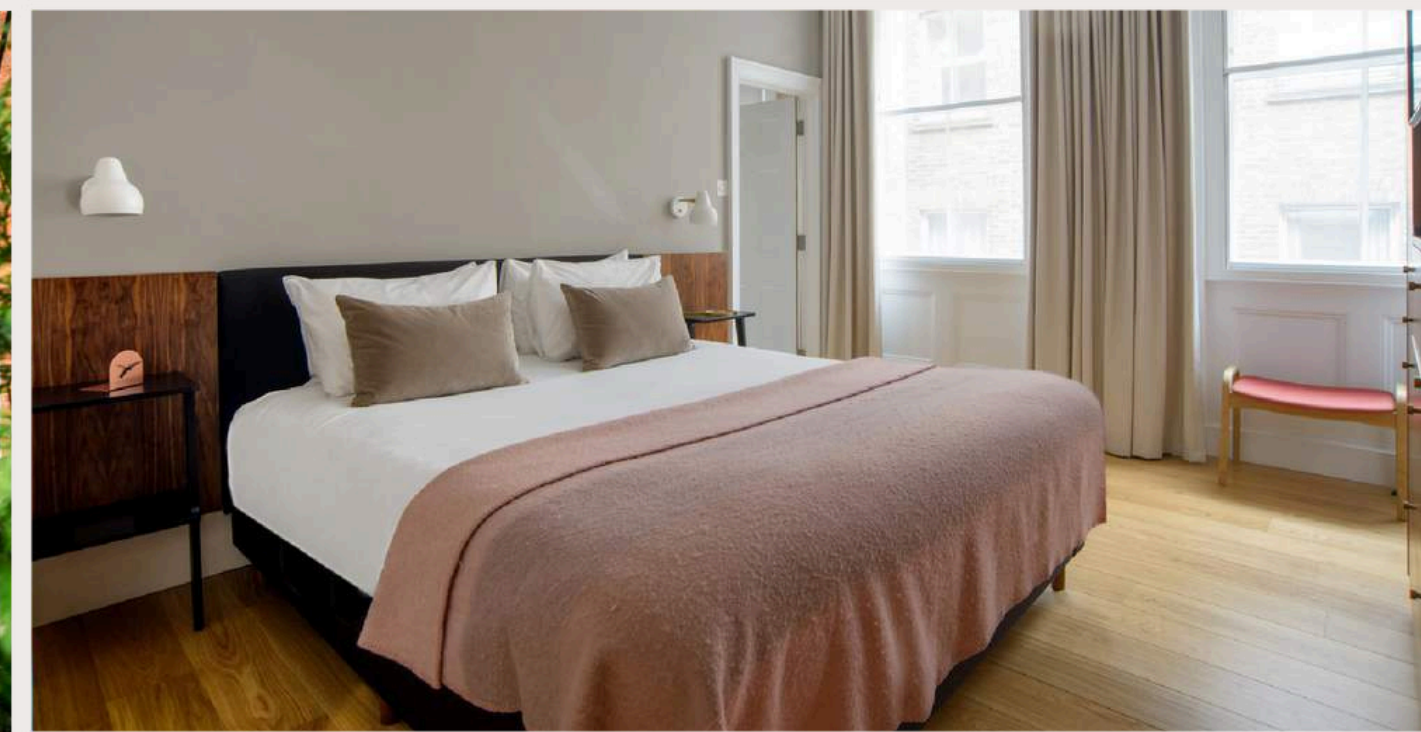


# About Us

The Apartment collection is a curated selection of beautifully designed apartments brought to you by Native.

Our apartments have been hand-picked in the best London locations, so you can experience the uniqueness of living in any part of the city.

From small apartments to large penthouses, perfect for short breaks or longer stays. We provide all the comforts of home and the freedom to live like a local.





Stay \ Comfortable

# Amenities



## Space to dine

Fully equipped kitchen.

Including fridge freezer, dishwasher, and dining room table.



## Space to move

Full sized property

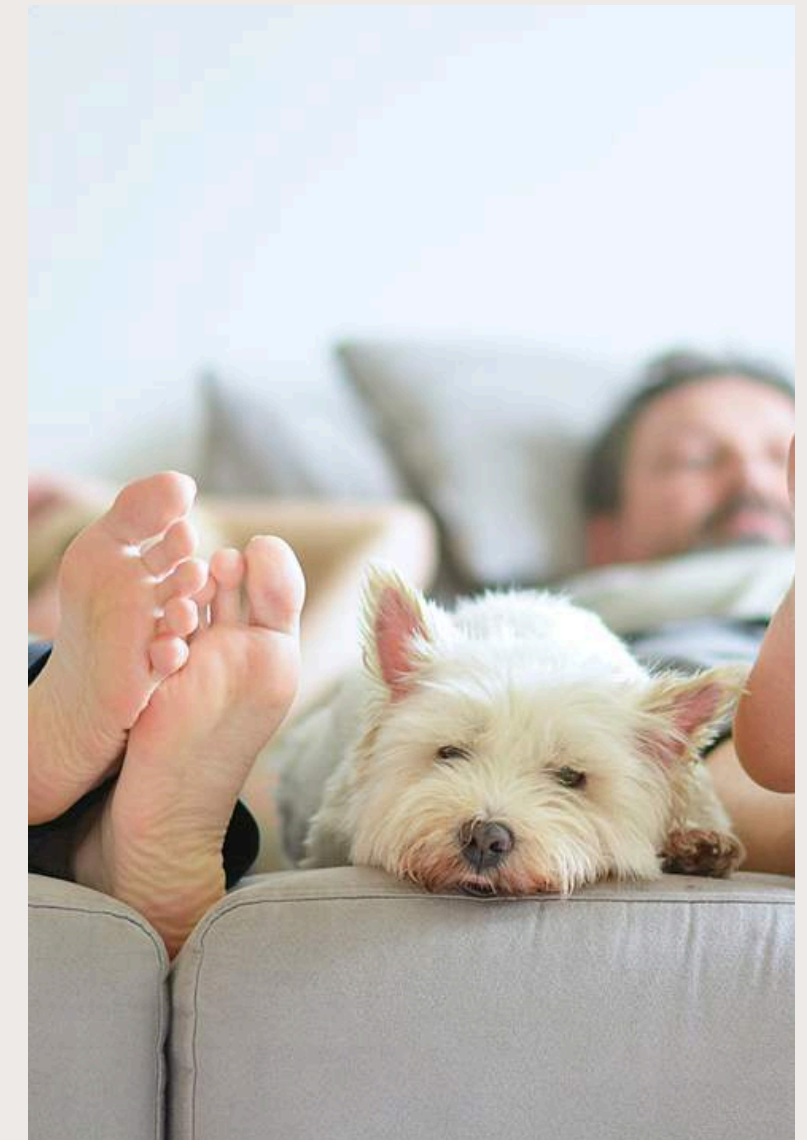
With an average property size of 500sf. You have room to hop, skip and jump around.



## Space to work

High speed WiFi

Desk space with multiple plug sockets and an ascetic video call background. You won't need to leave for office.



## Space for all

Pet friendly

From Pug to Doberman. Furry Friends are welcome to come too.



# Our Properties



**City**  
America Sq - City of London



**Waterloo**  
Stamford St- Waterloo, London



**Cannon Street**  
College Hill - City of London



**Fulham**  
Fulham Rd - Fulham, London



**The Marlo**  
Blandford St, Marylebone, London



**Verso**  
50 Ewer St, Bankside, London



**Bank**  
Switin's Ln - City of London



**Marylebone Lane**  
50 Marylebone Ln - Marylebone, London



**Fenchurch street**  
Fenchurch St City of London



**Victoria**  
Howick Pl - Victoria, London





Stay \ Central

# The Marlo

The Marlo gives you all the comforts of your own home in the idyllic London Marylebone area. The apartments are easily accessible to public transportation and walkable to some iconic London places.



## Address

4 Blandford Street, Marylebone, London W1U 4BX



Marylebone Station 12 mins walk



Oxford Street 10 mins walk



Bond St Station 8 mins walk



St Christopher's place 6 mins walk



Backer St Station 10 mins walk



Regent's Park, 15 mins walk



## At a Glance

2 x Studio Apartment

2 x One Bed Apartment

1 x Three Bedroom Apartment



Explore our  
Neighbourhood Heroes.





Stay \ Central

# Verso

Furnished with aesthetically beautiful mid-century modern pieces. Perfectly located in the London Southbank area. The Property is within walking distance of both The City and the iconic Borough Market.

## Address

50 Ewer Street, Southwark, London, SE1 0NR



London Bridge Station 9 mins walk



The City of London 12 mins walk



Southwark Station 6 mins walk



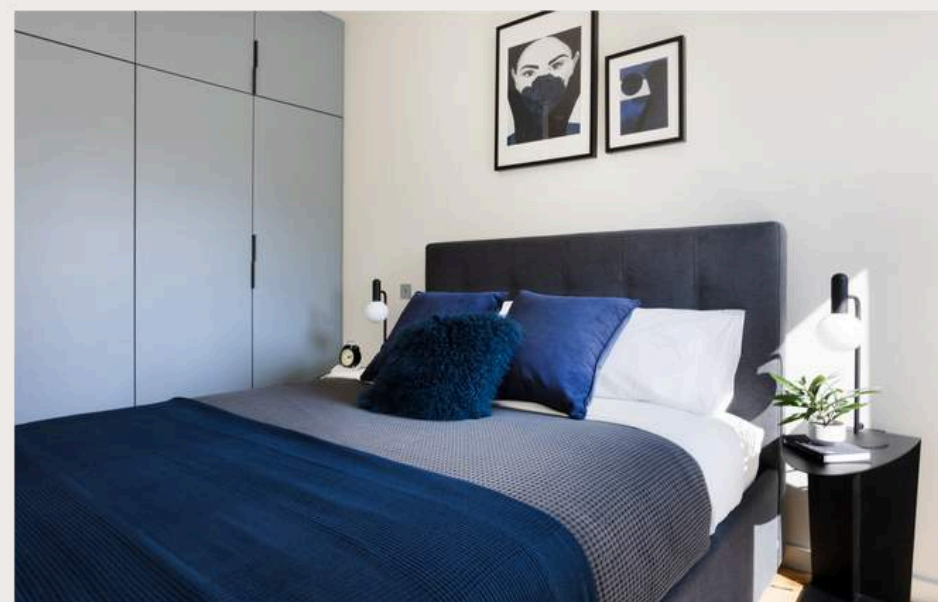
Borough Market 8 mins walk



Borough Station 10 mins walk



Tate Modern 6 mins walk



## At a Glance

2 x Open Plan One Bed Apartment

2 x Open Plan Two Bed Apartment



Explore our  
Neighbourhood Heroes.

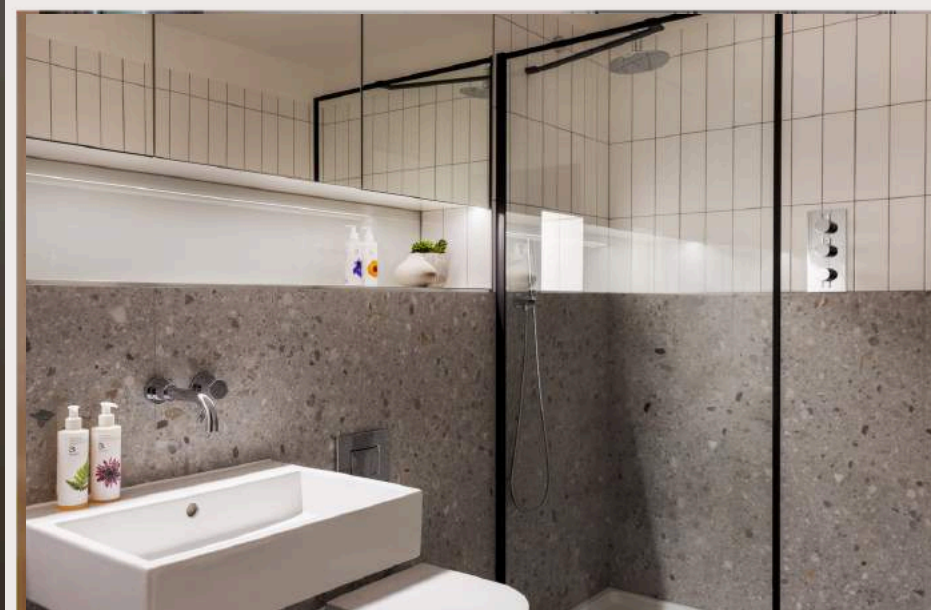




Stay \ Central

# Native Waterloo

Formerly the site of a 19th Century Unitarian Chapel, this unique property embraces classic and contemporary architecture. Within walking distance is the National Theatre and the galleries, restaurants and events that line The Thames.



## Address

57 Stamford Street, London SE1 9DJ

 Waterloo Station 8 mins walk

 Southwark Station 6 mins walk

 Blackfriars 10 mins walk

 King's College 2 mins

 Oxo Tower 3 mins walk

 London Eye 13 mins walk

## At a Glance

20 x One Bed Apartment

36 x Two Bed Apartment

2 x Penthouse Apartment



Explore our  
Neighbourhood Heroes.





Stay \ Central

# Native Marylebone Lane

In the heart of Marylebone, 23 apartments sit within the building. From spacious mezzanine three-bedroom to cosy one-bedroom apartments, these spaces provide room to roam with everything you need for an easy stay.

## Address

50 Marylebone Ln, London W1U 2 AD



Bond Street Station 3 mins walk



Marble Arch 13 mins



Oxford Street Station 10 mins walk



Oxford Street 9 mins walk



Baker Street Station 15 mins walk



Regent's Park 15 mins walk



## At a Glance

[One Bed Apartment](#)

[Two Bed Apartment](#)

[Three Bed Apartment](#)



Explore our  
Neighbourhood Heroes.



# Stay \ Original

