

## DO YOUR BIT FOR THE ENVIRONMENT

At LNER, we've been looking for ways to lessen our impact on the environment, aiming to reduce waste and become more eco-friendly. When booking your travel, think about the mode of transport and the impact it has.

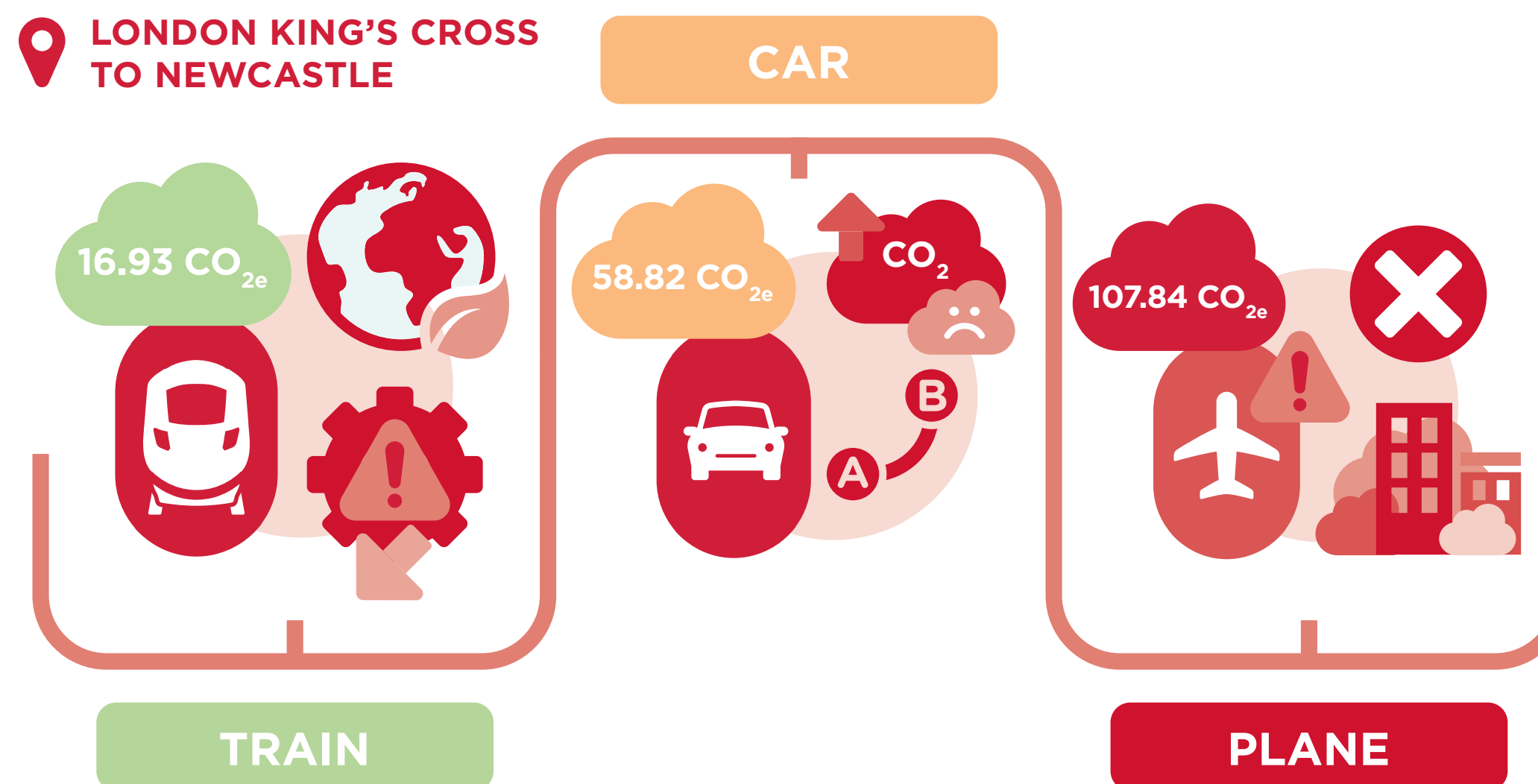


On a train journey from London King's Cross to Edinburgh, 57.3kg CO<sub>2</sub> emissions are released in comparison to the same journey on a plane which releases 98.37kg CO<sub>2</sub> emissions.

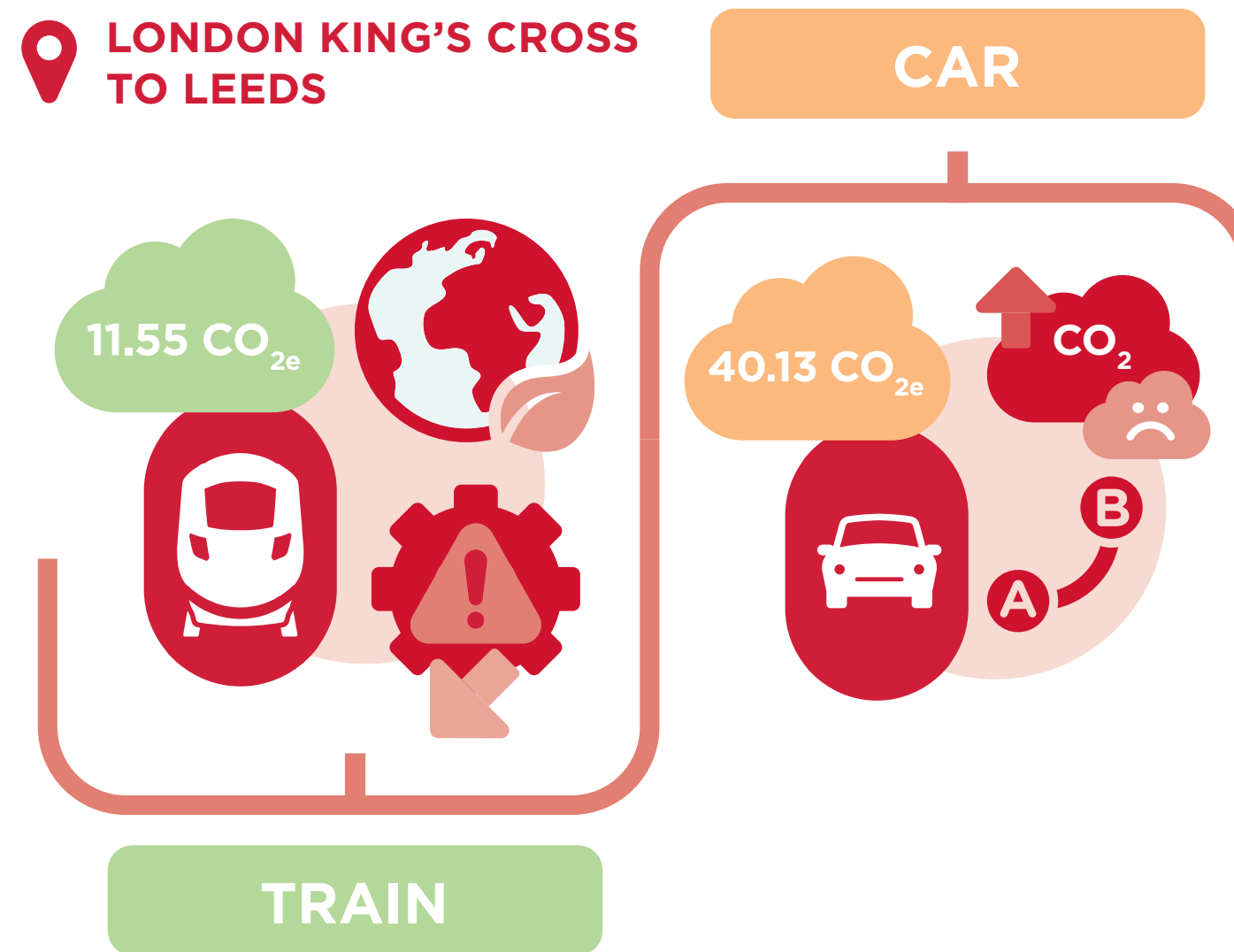


On average, a plane produces over 53 pounds of carbon dioxide (CO<sub>2</sub>) per mile. If you take the train, then you'll cut carbon dioxide by half.

LONDON KING'S CROSS TO NEWCASTLE



LONDON KING'S CROSS TO LEEDS



LONDON KING'S CROSS TO YORK

