

CONRAD®  
LONDON ST. JAMES





## WELCOME TO CONRAD LONDON ST. JAMES

Conrad London St. James effortlessly blends a historic 19th century facade with locally inspired style and design. From eye-catching artwork and contemporary bedrooms to destination dining and elevated British fare, experiencing quintessential London is easy. Our intuitive, personalised service appeals to smart luxury travellers who come for business, pleasure or both. The Conrad Concierge app offers access to all of the luxury services available in the hotel, from the palm of your hand.



### AT A GLANCE

- 256 guest rooms and luxury suites including our signature Conrad Suite
- 42" plasma HD televisions in all rooms
- Complimentary Wi-Fi throughout the hotel
- Choice of bathroom amenities
- Marble bathrooms
- Luxury bathrobes and slippers
- 300 thread count Egyptian cotton sheets
- Nespresso coffee machine in all rooms and suites
- Express pressing, same day and overnight laundry & dry cleaning service
- Nightly turndown service
- Complimentary newspapers
- Daily and overnight valet parking
- 24-hour Fitness Centre with Life Fitness cardiovascular and strength training equipment



## MEETINGS AND EVENTS

Leave your next meeting or conference in the capable hands of an elite event team at Conrad London St. James. The hotel offers seven impressive state-of-the-art luxury meeting spaces in the centre of London with the latest technology.

With 575 square metres of total meeting space, Conrad London St. James is equipped to host tailored events. We can provide various layouts in every meeting room to suit every occasion: from boardrooms and classrooms through theatre, cabaret and banquet, to reception for up to 300 guests.



Room Name	Area (sqm)	Dimensions (m)	Height (m)	Capacities						
				Theatre	Classroom	Banquet	Reception	Boardroom	Cabaret Style	U-Shape
Whitehall Suite	270	10 x 27	3.2	n/a	n/a	220	300	n/a	n/a	n/a
Whitehall 1 & 2 or 3 & 4	130 or 140	10 x 13	3.2	120	60	120	150	n/a	n/a	n/a
Whitehall 1, 2 & 3 or 2, 3 & 4	210	10 x 21	3.2	n/a	n/a	170	200	n/a	n/a	n/a
Whitehall 1	60	10 x 6	3.2	60	30	50	50	24	30	26
Whitehall 2	70	10 x 7	3.2	70	35	60	60	24	35	26
Whitehall 3	80	10 x 8	3.2	70	35	60	60	24	35	26
Whitehall 4	60	10 x 7	3.2	60	30	50	50	24	30	26
Chevening	60	10 x 6	3.2	60	30	40	40	24	30	26
Dorneywood	54	9 x 6	3.1	50	28	50	50	18	28	24
Chequers	48	8 x 6	3.1	n/a	n/a	n/a	n/a	10	n/a	n/a



## DINING

### THE PEM

Glamorous and elegant, The Pem Restaurant is winner of the National Restaurant Awards' One To Watch for 2021. With it's distinct rosy-hued interior and art deco inspired design, the menu at The Pem displays an elevated style of the food created by Michelin-starred Chef Sally Abé; considered and memorable, yet still retaining the fun and liveliness that Sally's guests have come to know and love.

Building on the foundations of historic British cuisine and celebrating flavours that are familiar and much-loved, the Pem offers it's own interpretation matched perfected with a beautifully curated wine list from independent producers. The Pem can be hired exclusively and is also home to the Harben Room, an intimate private dining space for up to 24 guests.

The restaurant name is inspired by suffragette Emily Wilding Davison, whose family used the pet name 'Pem' for her and celebrates generations of pioneering women leading from the front.

Room Name	Capacities
The Pem Restaurant	70
The Harben Room	24

Proud winners of  
'The One To Watch'





## DINING

### BLUE BOAR PUB

Located in the heart of the iconic Westminster village, Blue Boar Pub is a modern take on the classic London pub. The pub interior is inspired by local landmarks like Big Ben's clocktower, and designed to feel warm, welcoming and characterful. There is plenty of bustling spaces for leisurely eating and drinking, lots of comfy sofas, and cosy corners and hidden spots for more intimate conversations.

Sally Abé, Consultant Chef and a winner of the Gastropub Chef of the Year award has created a traditional pub menu but with her own contemporary twist on much-loved classics. It's all about quintessentially British dishes – done to their absolute best with a lot of love and care, created with top quality seasonal British ingredients.

Blue Boar Pub is the perfect space to sip on a pint of house draught from Meantime Brewery, or perhaps one of the selection of craft and guest international beers, wines, classic cocktails and iconic gins



Room Name	Capacities
Blue Boar Pub	120
The Snug	9

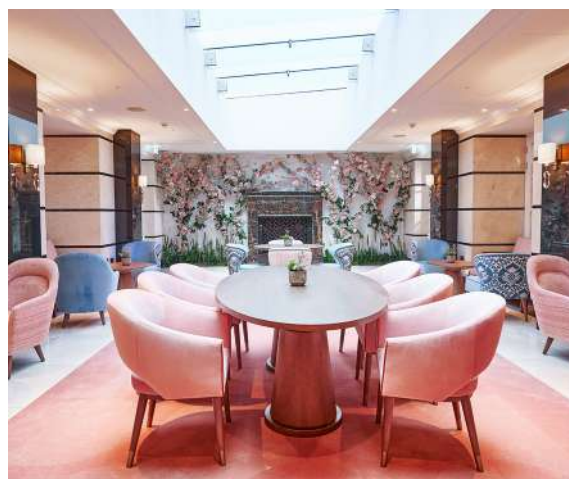


## DINING

### THE ORCHARD ROOM

With its stunning floral decorations which catch the light flooding in through the beautiful glass roof, the Orchard is a relaxing room to enjoy traditional Afternoon Tea menu. Classically based, but with some fresh ideas, our menu includes delicious sweet and savoury specialities to make it even more of an occasion. The Orchard can also be hired for exceptional celebrations and events – this is definitely the place to be in Westminster for private and corporate hire.

Room Name	Area (sqm)	Dimensions (m)	Height (m)	Capacities		
				Standard	Banquet	Reception
The Orchard Room	126	7.7 x 19.3	6.1	80	40	100



### THE HEDGEROW

Our glamorous cocktail bar features a dramatic green marbled bar where cocktails are based on a taste of the countryside, are carefully created. Using natural British botanicals, fruits, and herbs, the intriguing cocktail list has been created by top mixologist and Head Barman Gregorio Soriente. This is the spot to enjoy a cocktail before having dinner at The Pem, or for sensational evening drinks with delicious bar snacks. The Hedgerow is available for private hire, for up to 60 guests.





## BEDROOMS & SUITES

Conrad London St. James has 256 contemporary rooms and suites, which reflect the hotel's modern and sleek design. The collection of 15 luxury suites include the One Bedroom Suite, sumptuous One Bedroom Deluxe Suite, the Duplex Suite which is decadently arranged over two floors and the signature Conrad Suite complete with private elevator and window to the stars. All suites have large marble bathrooms, a separate bath tub and walk-in rain forest showers. All suites grand access to the Executive Lounge offering a quiet space to relax and recharge with complimentary refreshments served throughout.



Conrad London St James

22-28 Broadway

London

SW1H 0BH, UK

t. +44 (0)20 3301 8080 | f. +44 (0)20 3301 1380

### WHAT IS NEARBY?

- Buckingham Palace
- St. James's Park
- Westminster Abbey
- Houses of Parliament
- Big Ben
- London Eye
- Horse Guards Parade
- 10 Downing Street

