

Hilton London Hyde Park



Introduction

BOUTIQUE EDWARDIAN CHARM RIGHT ACROSS FROM HYDE PARK

Picture an elegant guest room with a classic twist, in a grade II listed Edwardian Townhouse, located directly across from Britain's most famous park, and you can only begin to imagine the experience of a stay at Hilton London Hyde Park.

At our hotel, all of London's wonderful attractions are right on your doorstep including shopping at Oxford Street, the vibrant Soho neighbourhood and Buckingham Palace.

BE HERE

At the Centre of It All

PERFECT LOCATION

- Directly opposite to Hyde Park, one of British's most famous parks
- Adjacent to Queensway & Bayswater Underground Stations with Central, District & Circle lines
- 10 minutes away from Marble Arch/ Park Lane, Oxford Street/West End, Paddington/Notting Hill, Holborn area...
- All of London's key destinations are within 20 minutes' travel from the hotel: Kensington Gardens, Portobello Market, Royal Albert Hall...



Facilities & Services

ACCOMMODATION

- 136 bedrooms, including Standard, Double, Queen, Spacious Hilton King Deluxe rooms with view on Hyde Park.
- Split-level Dome Suite with stunning panoramic views on Hyde Park

FACILITIES

- Aubaine Restaurant, Bar and Lounge
- Wireless internet access available throughout
- A Meeting Room and Concierge services

Rooms & Suite

Hilton

Our rooms are designed with comfort and convenience in mind; The gentle colour schemes provide a calming and relaxing atmosphere. Explore the various types of rooms, browse the amenities, and choose the space that's right for you.



Double Guest Room



Queen Guest Room with Park View

Rooms & Suite

Hilton

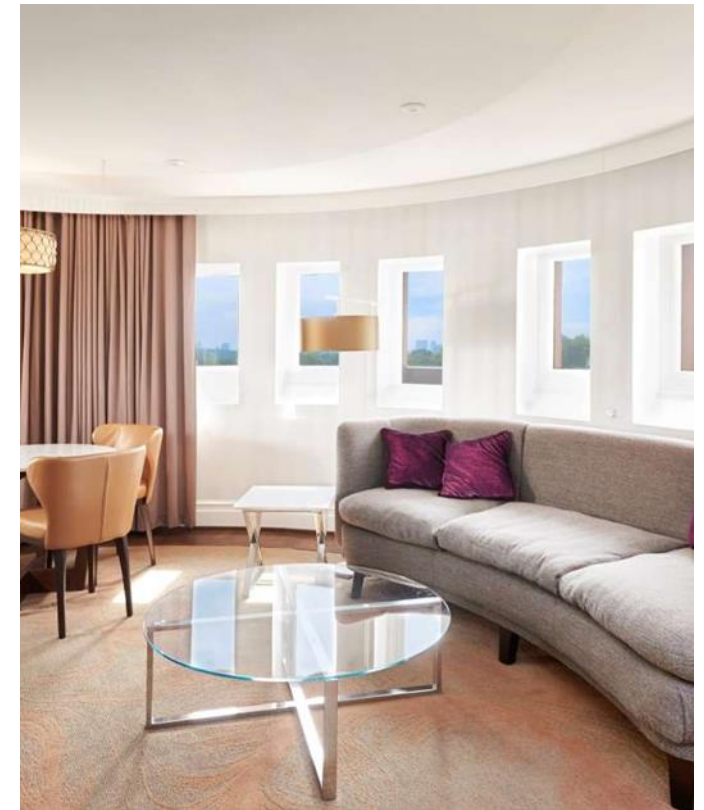
Our rooms are designed with comfort and convenience in mind; The gentle colour schemes provide a calming and relaxing atmosphere. Explore the various types of rooms, browse the amenities, and choose the space that's right for you.



King Deluxe with Park View



Grand Superior Room



Dome Suite

AUBAINE RESTAURANT

French Cuisine

Hilton

Aubaine is a true blend of cosmopolitan style and French cuisine. Combining the elegance of a Parisian salon with the relaxed ambience of a Provençal bistro, Aubaine serves both simplicity and style.





Plan An Event

Hilton London Hyde Park is ideal to host groups up to 16 bedrooms with modern deco and classic twist.

Meeting and Event Highlights:

- An intimate 36 sq. meter meeting room
- Up to 16 delegates in boardroom layout comfortably
- Wireless internet and A/V technology in the room
- Bespoke personalized service

HOTEL Highlights

Hilton

HOTEL FACILITIES

- 136 bedrooms including the Dome Suite with views on Hyde Park
- Aubaine Restaurant, Bar & Boulangerie, true blend of cosmopolitan style and French cuisine
- 1 meeting room up to 16 delegates

KEY USP'S

- Grade II listed Edwardian townhouse with boutique charm
- First opened in 1907 as The Coburg Court Hotel
- Overlooking one of Britain's most famous parks, Hyde Park
- Boutique hotel with bespoke customer service

LOCATION

- Adjacent to Queensway & Bayswater Underground Stations with Central, District & Circle lines
- Directly opposite to Hyde Park
- 10 minutes from Marble Arch with Park Lane and Oxford Street, from Paddington and from Notting Hill

GET IN Contact

Hilton

CALL US

+44 (0) 7583 043 310

EMAIL US

Chanhee.jung@hilton.com

WEBSITE

www.hydepark.hilton.com

FACEBOOK

<https://www.facebook.com/hiltonhydepark>

LINKEDIN

<https://www.linkedin.com/company/hilton-london-hyde-park/>

INSTAGRAM

<https://www.instagram.com/hiltonhydepark/>



Thank you

