

# LEONARDO ROYAL HOTELS







# STEP INTO ROYAL

Welcome to the world of  
Leonardo Royal, a collection of premium  
hotels in prime city locations.

With many years' experience of providing first-rate hospitality, we know the value of a relaxing retreat during a busy, or blissfully quiet, stay.

Welcoming rooms and dedicated staff ensure you'll have a carefree time in our company, while highly desirable locations offer a unique experience of your chosen city.

Take one step outside our doors and you'll be immersed in the metropolitan wonders of central London, breathing in the maritime air of Southampton, or investigating the historic streets of Edinburgh.

We also believe that great hotel experiences are decided by getting the details right. So while our rooms boast well-appointed bathrooms, sumptuous and bespoke 'dream beds' (exclusive to Leonardo Hotels mattresses) and striking city views, they also offer a host of amenities and helpful little luxuries.

From large flat-screen TVs and free superfast Wi-Fi, to fine linens, soft cushions and cosy blankets, simply choose whether you want to indulge in a cinematic treat or drift into a peaceful night's sleep.

Once you wake, let the fresh aromas and flavours of a gourmet breakfast hearten you for the day ahead.

For lunch, dinner or a light bite, you can dine in style at our boutique restaurants, whose varied menus will delight epicures and comfort food fans alike.

Our elegant bars also provide excellent settings to

help you wind down, be it for a quiet nightcap after work or a classic cocktail before a night out.

Booking with us for business? Our flexible function rooms and spaces are managed by dedicated Meetings & Events teams, to make sure that every gathering, large or small, goes smoothly.

So whether you need us to create and manage an intimate boardroom-like space, or scale-up to handle a huge event of up to 1200 attendees, we will realise all your requirements.

With our experienced staff, wide range of high-tech equipment and choice catering options all on hand, you'll have everything you need to set the agenda and seal the deal.

Paying us a visit for pleasure? Each Royal Hotel offers you a spacious and serene environment to unwind in, nowhere more so than in our superlative Rena Spas, with their wide range of rejuvenating treatments and alluring use of the cult French skincare brand, Caudalie.\*

You can also take the plunge in tranquil pools, slowdown in saunas and steam rooms, or work up a sweat in our well-equipped gyms.

And with every Leonardo Royal Hotel located in the city centre, when you do venture outside, amongst the myriad of famous attractions around you, you'll remember why you love our locations.

\*Leonardo Royal Edinburgh Haymarket does not have Rena Spa or Rena Health and Leisure.



LEONARDO ROYAL  
LONDON – ST. PAUL'S

# STEP INTO ST PAUL'S



A stellar location by a majestic landmark, our flagship hotel is situated right beside St. Paul's Cathedral in the capital's bustling City of London's business district.

- Y – 459 Spacious bedrooms
- Y – Rena Spa
- Y – Rena Health & Leisure
- Y – 18m indoor swimming pool
- Y – 23 Meeting rooms, with a maximum capacity of 1,200
- Y – Dedicated meeting and events team
- Y – Sabine Rooftop Bar & Terrace, located on the 7th floor with breathtaking views of St. Paul's Cathedral
- Y – Leo's Bar and Restaurant

#### Leonardo Royal London St. Paul's

10 Godliman Street,  
London EC4V 5AJ

Tel: 020 7074 1000

Email: [stpaulsenquiries@leonardohotels.co.uk](mailto:stpaulsenquiries@leonardohotels.co.uk)

#### GDS Codes

Amadeus LONRAN

Sabre 102082

Galileo 92184

Worldspan 17019

#### Location highlights

- Y – 5 minute walk from St. Paul's, Mansion House and Blackfriars Underground Station
- Y – 7 miles from London City Airport
- Y – 18.5 miles from London Heathrow Airport





LEONARDO ROYAL  
LONDON - CITY

# STEP INTO LONDON CITY



A fantastic site near an ancient fortress, our City hotel is located close to the Tower of London in the east of the City District.

- Y - 317 Spacious bedrooms
- Y - Rena Spa
- Y - Rena Health & Leisure
- Y - 25m indoor swimming pool
- Y - 12 Meeting rooms, with a maximum capacity of 500
- Y - Dedicated meeting and events team
- Y - Corvo, an Italian inspired Bar and Café on site
- Y - Leo's Bar and Restaurant

#### Leonardo Royal Hotel London City

8-14 Cooper's Row,  
London EC3N 2BQ

Tel: 020 7863 3700

Email: londoncityenquiries@  
leonardohotels.co.uk

#### GDS Codes

Amadeus LONCIT  
Sabre 61543  
Galileo 40756  
Worldspan LONCI

#### Location highlights

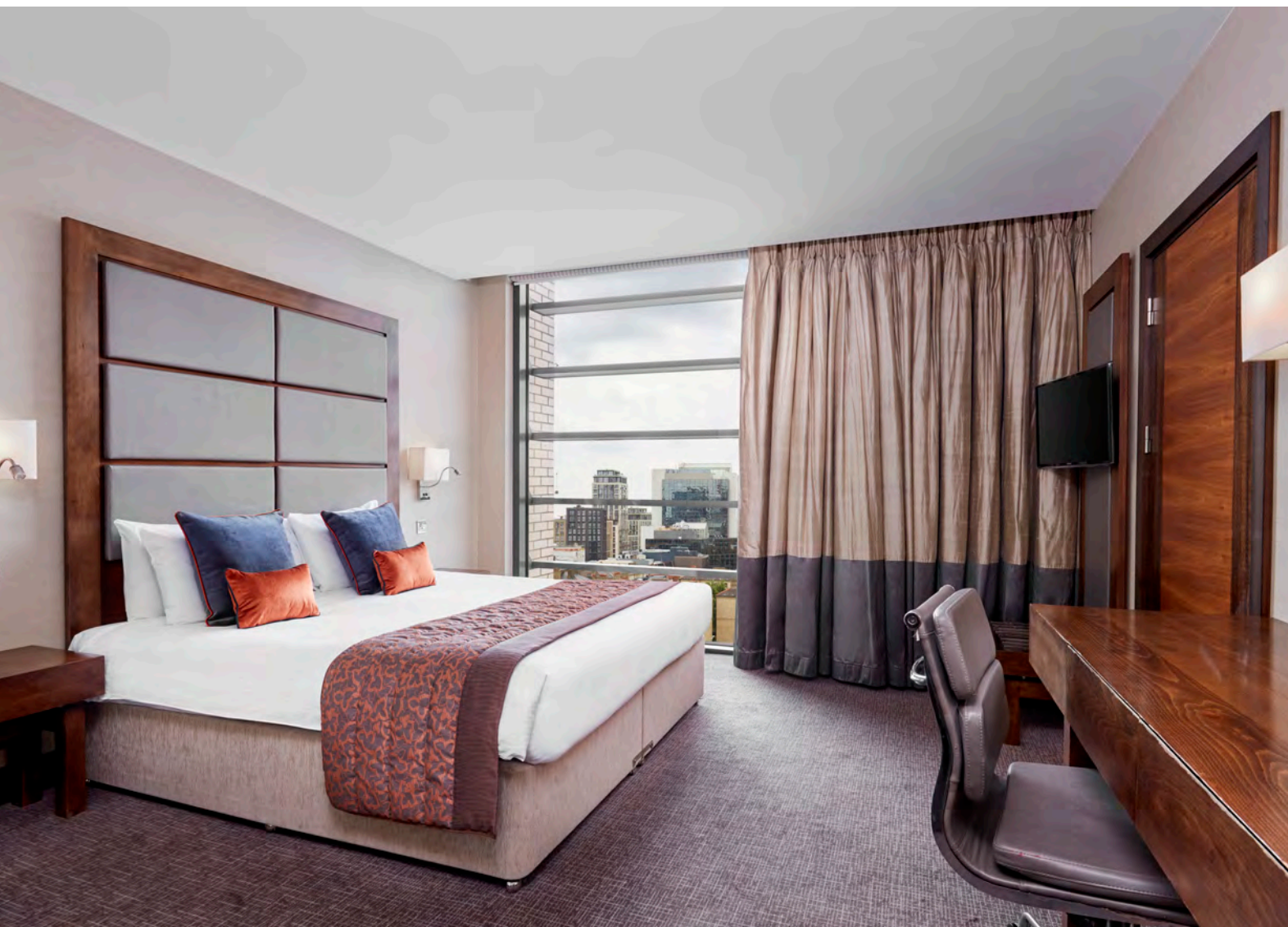
- Y - 1 minute walk from Tower Hill Underground station
- Y - 5 minute walk from Tower Gateway DLR Station
- Y - 7 miles from London City Airport
- Y - 18.5 miles from London Heathrow Airport





LEONARDO ROYAL  
LONDON - TOWER BRIDGE

# STEP INTO TOWER BRIDGE



Set between skyscrapers and the buzz of East London, our Tower Bridge hotel lies just north of the Thames and its most picturesque crossing point.

- Y – 370 Spacious bedrooms
- Y – Rena Spa
- Y – Rena Health & Leisure
- Y – 25m indoor swimming pool
- Y – 17 Meeting rooms, with a maximum capacity of 850
- Y – Dedicated meeting and events team
- Y – Leo's Bar & Restaurant

#### Leonardo Royal Hotel London Tower Bridge

45 Prescott St, London E1 8GP

Tel: 020 7959 5000

Email: [towerbridge@leonardohotels.co.uk](mailto:towerbridge@leonardohotels.co.uk)

#### GDS Codes

Amadeus LONTWR  
Sabre 101999  
Galileo 78940  
Worldspan 75310

#### Location highlights

- Y – 10 minute walk from Tower Hill and Aldgate Underground Stations
- Y – 30 minutes by car from London City Airport and 25 minutes via Docklands Light Railway (DLR)
- Y – 31 miles from Heathrow Airport





LEONARDO ROYAL  
SOUTHAMPTON – GRAND HARBOUR

# STEP INTO SOUTHAMPTON



With its glassy, stepped avant-garde design,  
our Southampton Grand Harbour hotel is a renowned  
landmark by the city's waterfront.

- Y – 173 Spacious bedrooms
- Y – Rena Spa
- Y – Rena Health & Leisure
- Y – 15m indoor swimming pool
- Y – 13 Meeting rooms
- Y – Dedicated meeting and events team
- Y – Marco Pierre White Restaurant

#### Location highlights

- Y – 10 minute walk from Southampton Railway Station
- Y – 5 miles from Southampton Airport
- Y – 5 miles from M27 motorway
- Y – On site parking for 179 cars

#### Leonardo Royal Hotel Southampton Grand Harbour

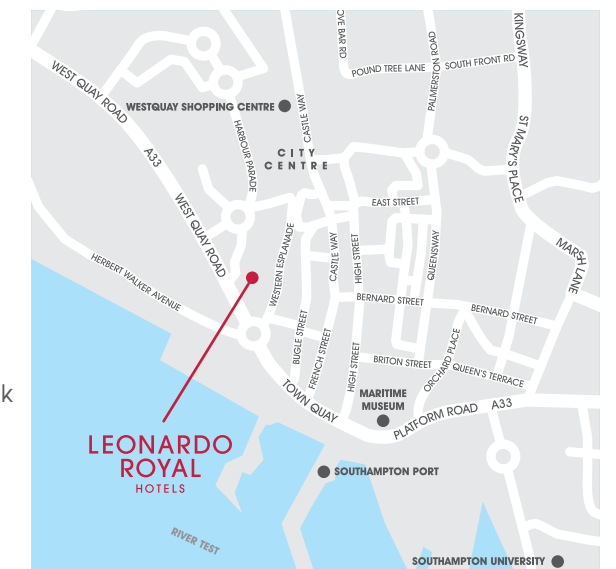
West Quay Road,  
Southampton SO15 1AG

Tel: 023 8063 3033

Email: [southamptongrandharbour@leonardohotels.co.uk](mailto:southamptongrandharbour@leonardohotels.co.uk)

#### GDS Codes

Amadeus SOUGHH  
Sabre 10986  
Galileo 56663  
Worldspan SOUGR





LEONARDO ROYAL  
EDINBURGH – HAYMARKET

# STEP INTO EDINBURGH



Standing less than a mile from  
Edinburgh Castle, our Haymarket hotel offers you a  
regal residence just west of the city centre.

Y – 282 Spacious bedrooms

Y – 4 Meeting rooms

Y – Dedicated meeting and  
events team

Y – Marco Pierre White Bar &  
Restaurant

**Leonardo Royal Hotel  
Edinburgh Haymarket**

1 Morrison Link, Edinburgh EH3 8DN

Tel: 0131 460 46 00

Email: [edinburghroyalreservations@  
leonardohotels.co.uk](mailto:edinburghroyalreservations@leonardohotels.co.uk)

**GDS Codes**

Amadeus EDIACI

Sabre 311788

Galileo A7362

Worldspan EDACI

**Location highlights**

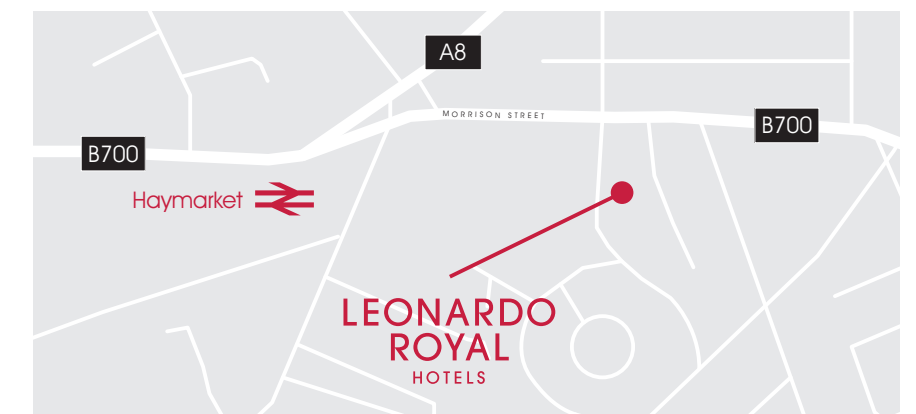
Y – 5 minute walk from Haymarket Train Station

Y – 7 miles from Edinburgh Airport

Y – 15 minute walk from Edinburgh City Centre

Y – Close to A71 motorway

Y – 81 car parking spaces available on site





STEP  
INTO  
ROYAL

LEONARDO  
ROYAL  
HOTELS



— THE —  
MIDLAND  
MANCHESTER  
A LEONARDO ROYAL HOTEL

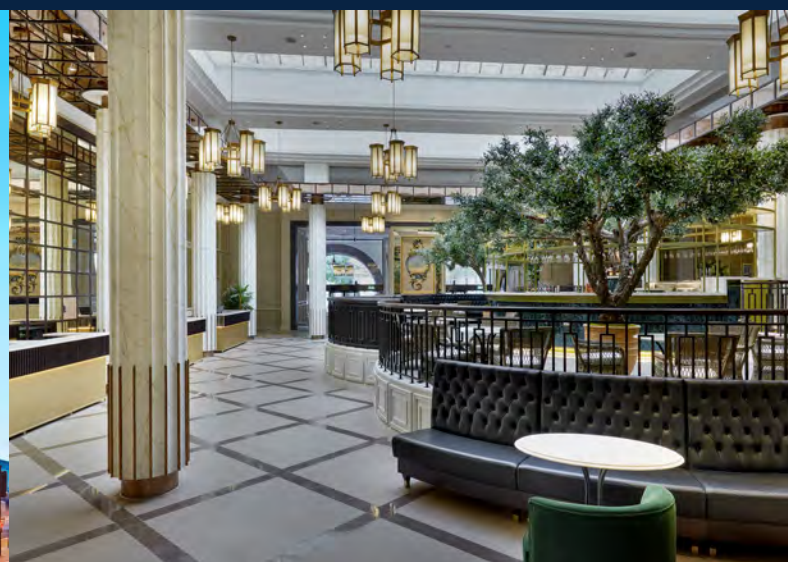
IT'S ABOUT TIME

WE'VE BEEN A WELCOME SIGHT  
AT JOURNEY'S END AND SEEN HISTORY  
MADE WITHIN OUR WALLS

Our heritage would make most hotels blush, but  
our ambience is coolly contemporary.

The Midland Hotel has been an  
iconic presence in Manchester since 1903.

We've pioneered fine dining, sparked famous romances  
and hosted royalty, yet we're still awaiting our most important guest. You.



- 312 stylish and spacious bedrooms
- 14 conference and event rooms accommodating up to 700 delegates
- Rena Spa
- Rena Health & Leisure
- Mount Street Dining Room and Bar
- The Midland Lounge
- The French by Adam Reid
- An idyllic wedding venue

Location highlights

- Two award winning restaurants
- Complimentary WiFi
- City centre location next to Manchester Central Convention Complex

The Midland

16 Peter Street, Manchester M60 2DS

Tel: +44 (0)161 236 3333

Email: [events@themidlandmanchester.co.uk](mailto:events@themidlandmanchester.co.uk)

GDS Codes

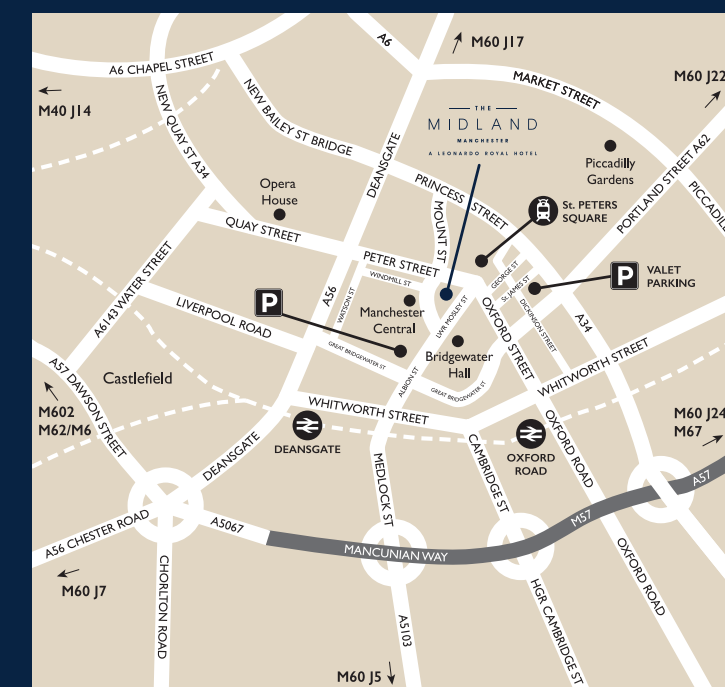
Amadeus MAN7B5

Sabre 2517

Galileo 3175

Worldspan 4549

[themidlandhotel.co.uk](http://themidlandhotel.co.uk)







**NYX Hotels are more than just hotels. At NYX Hotel London Holborn, London's electrifying spirit will not stop at the front door, but will flow throughout and inspire everything you see, hear, taste and experience.**

From the laidback, luxurious style to the food, drinks and one-off events, a stay at NYX Hotels is a unique experience, not to be missed:

- 213 luxurious bedrooms
- NYX Eat, Drink & Play serving food & creative drinks all day
- Stylish nooks for casual meetings & catch-ups
- Live music at weekends
- Rena Spa featuring treatments by award-winning cult French beauty brand Caudalie
- Rena Health & Leisure with 13m Greco-Roman heated pool
- A range of designer spaces available for private dining & events (from 15 to 120 people)



#### Guests will experience

- 213 luxurious bedrooms and suites
- A range of designer spaces available for private dining and events
- Rena Spa
- Rena Health & Leisure
- NYX Eat, Drink & Play

#### NYX London Holborn

Southampton Row, London WC1B 4AR

Tel: +44 20 7242 1800

Email: [nyxholborn@leonardohotels.co.uk](mailto:nyxholborn@leonardohotels.co.uk)

#### GDS Codes

Amadeus LONHOL

Sabre 44552

Galileo 31230

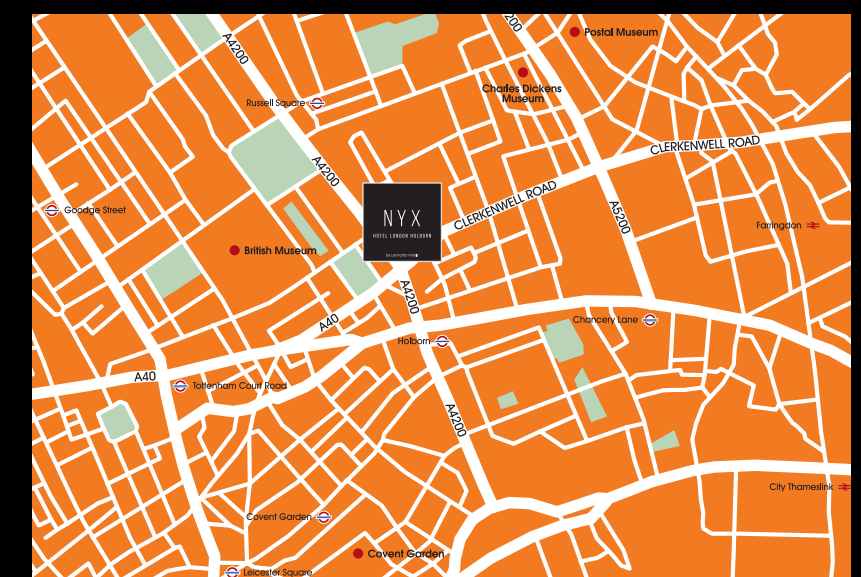
Worldspan LONHO

[hotelsbynyx.com](https://hotelsbynyx.com)

Located on the corner of Southampton Row and Theobald's Road, NYX Hotel London Holborn is part of London's vibrant Midtown scene, a hive of independent shops, bars, and bijoux restaurants.

And with Covent Garden, Oxford Street, Bloomsbury, and Farringdon just around the corner, we're perfectly poised to deliver both the intimacy of a neighbourhood and the roar of the city.

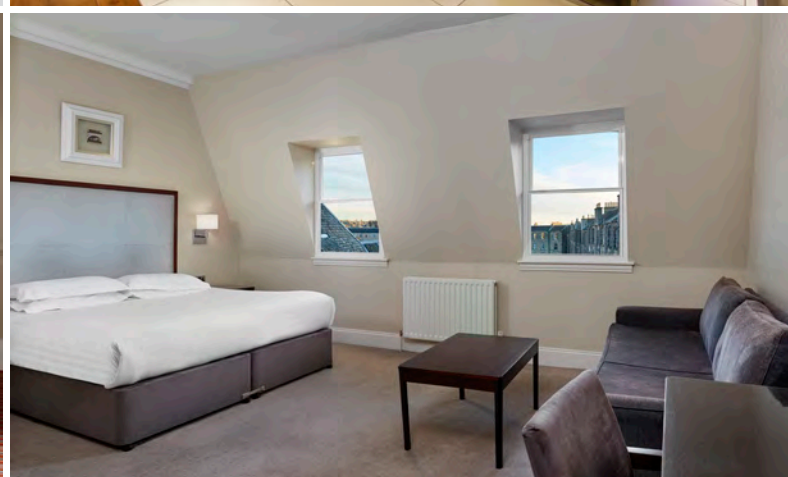
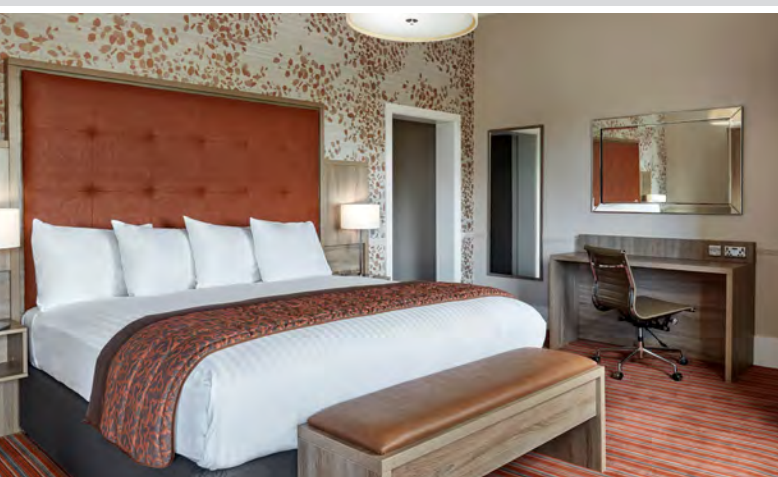
For those looking to explore further, Holborn underground station is less than a 5 minute walk from the hotel and Russell Square underground station is also within walking distance. Mainline train stations; King's Cross, Euston and St. Pancras International rail stations are also easily accessible; providing access to the rest of London and beyond.





# LEONARDO HOTELS

Welcome to Leonardo Hotels, where amazing locations, attractive rooms and affordable prices come together.



Leonardo Hotels provide the perfect base for a city break or business trip. With several properties sited across the UK there are plenty of places to choose from. Our appealing range of hotels offer clean, comfortable and contemporary rooms and spaces, and they're all run diligently by our experienced teams.

When you check into a Leonardo Hotel you're guaranteed excellent service. All our rooms offer en-suite bathrooms, 'DREAM beds' with custom-made mattresses, plus a pleasing selection of amenities – expect free and fast Wi-Fi, flat-screen TVs and fresh linens.

Every hotel has at least one in-house eatery and bar too, so from filling breakfasts to set you up for a day of meetings or city exploring to light lunches and hearty dinners, good menus and mealtimes are covered. Room service is also available in most of our locations.

If business is the order of the day, a wide range of our hotels provide flexible meeting rooms and spaces for conferences, forums and other corporate events. With dedicated Meetings & Events teams available on-site, and a range of technology to take advantage of, we'll supply the ideal setting for your dealings and discussions.

The fantastic locations, however, are what really distinguish all Leonardo Hotels. Whether it's choice positions in Edinburgh and on the outskirts of Perth, by international airports around London and Aberdeen, or a highly-prized place in the hippest part of Glasgow – staying at one of our hotels brings you endless options for enjoyment in some of the UK's most desirable cities.

With Leonardo Hotels, you'll always find a welcoming city escape.





**LEONARDO  
BRISTOL GLASSFIELDS  
NEW OPENING**

**LEONARDOHOTELS  
BRISTOL**

Situated on the lively Temple Way, the new hotel is within walking distance of the most popular shopping destinations, art galleries and Bristol's vibrant harbour side, with the Clifton Suspension Bridge just a short drive away. Staying in the city centre will allow guests to explore some of Bristol's main tourist attractions including the Hippodrome, Bristol Museum & Art Gallery and Brunel's SS Great Britain.

Guests can also benefit from the hotel's close proximity to Bristol's main transport links with Leonardo Hotel Bristol Glassfields located just a short walk away from Temple Meads Station, a seven minute walk from the local bus station and 19 minutes from Bristol Airport.

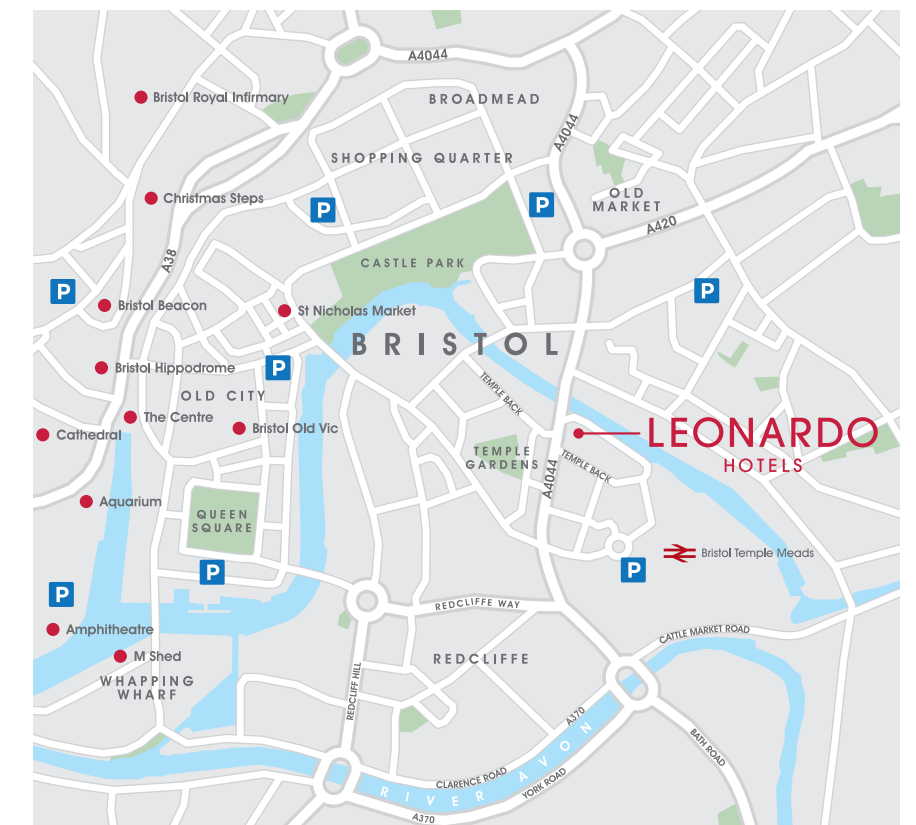
Environmentally aware, Leonardo Hotel Bristol Glassfields is proud to be BREEAM certified. BREEAM is the world's leading sustainability assessment method and merits new buildings that help protect natural resources and the environment.

- 197 Spacious bedrooms
- 1 Meeting room
- Maximum capacity - 25 delegates
- Leo's Bar & Restaurant

**Location highlights**

- 19 minutes from Bristol Airport
- 7 minute walk from the bus station
- 12 minute walk away from Temple Meads Station

**Leonardo Bristol Glassfields**  
3 Temple Way, Bristol BS2 0GS  
Tel: 01173 745900  
Email: [bristolenquiries@leonardohotels.co.uk](mailto:bristolenquiries@leonardohotels.co.uk)  
**GDS Codes**  
Amadeus BRSLBG  
Sabre 391542  
Galileo G2367  
Worldspan BRSLB







## LEONARDO GLASGOW – WEST END

Located in the fashionable West End of the city, our Glaswegian hotel is within walking distance of Glasgow University and bustling Byres Road.

This super-chic part of town is replete with live music spots and popular bars and restaurants, so we're perfectly placed for culture vultures as well as guests attending university events and concerts.



- 137 Spacious bedrooms
- 3 Meeting rooms
- Maximum capacity - 120 delegates
- 7 miles from the airport

### Location highlights

- Close to the M8 motorway at junction 25
- 7 miles from Glasgow Airport
- 7 miles from Glasgow Queen Street and Glasgow Central train stations
- Onsite Car Park

### Leonardo Inn Hotel Glasgow West End

Great Western Road,  
Glasgow G12 0XP

Tel: 0141 334 8161

Email: glasgowwestend  
reservations@leonardohotels.co.uk

### GDS Codes

Amadeus GLA526

Sabre 9346

Galileo 41597

Worldspan 83526







## LEONARDO ABERDEEN – AIRPORT

Whatever brings you to the Granite City, Leonardo Inn Hotel Aberdeen Airport has everything you need for a relaxing, leisurely stay.

Located in a prominent roadside position just a few hundred metres from Aberdeen Airport Terminal, we're in the perfect spot for adventures in the city – just seven miles away – or the wider north-east region.



- 202 Spacious bedrooms
- 1 Meeting room
- Maximum capacity - 20 delegates
- 350m from the airport
- Bar and restaurant

### Location highlights

- 350 metres from Aberdeen Dyce Airport terminal
- 2.4 miles from Dyce railway station
- Onsite parking
- Courtesy transport to and from the airport

### Leonardo Inn Hotel Aberdeen Airport

Argyll Road, Dyce AB21 0AF

Tel: 0122 477 28 83

Email: [aberdeenairportreservations@leonardohotels.co.uk](mailto:aberdeenairportreservations@leonardohotels.co.uk)

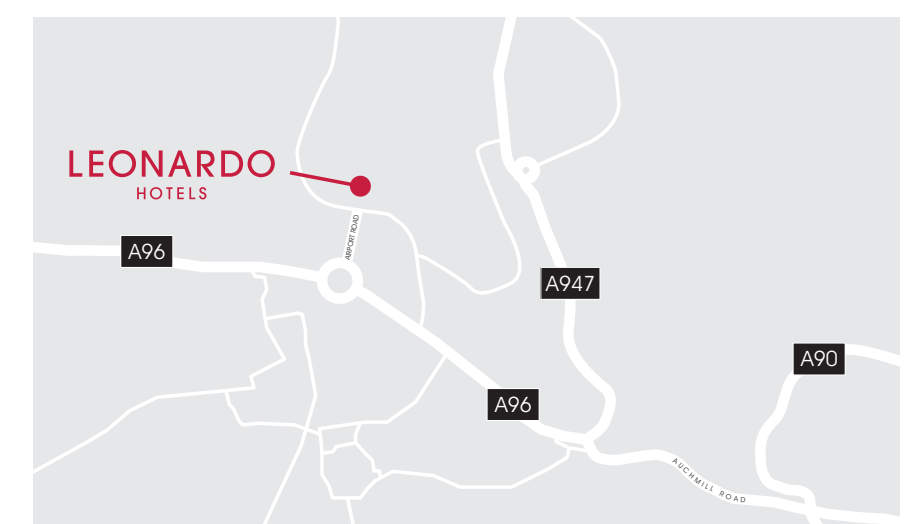
### GDS Codes

Amadeus ABZSBI

Sabre 79557

Galileo 66311

Worldspan ABZSI







## LEONARDO HUNTINGTOWER PERTH

Nestled in the verdant Perthshire countryside, Leonardo Boutique Hotel Huntingtower Perth oozes rustic charm.

Set amidst six acres of landscaped gardens and only five minutes from the Fair City itself, our hotel provides a tranquil sanctuary for those who enjoy peace and quiet, as well as a range of attractions in the enchanting city next door.

- 34 Spacious bedrooms
- 5 meeting rooms
- Maximum capacity - 200 delegates
- Premier wedding venue
- Bar and restaurant

### Leonardo Boutique Hotel Huntingtower Perth

Crieff Road, Perth PH1 3JT

Tel: 0173 858 3771

Email: [huntingtowerperth@leonardohotels.co.uk](mailto:huntingtowerperth@leonardohotels.co.uk)

### GDS Codes

Amadeus PSL524

Sabre 14572

Galileo 87985

Worldspan 83524

### Location highlights

- Edinburgh, Glasgow and Aberdeen are less than two hours away
- Within easy access to the A9 and M90.
- Onsite parking







LEONARDO  
LONDON – HEATHROW AIRPORT

Situated close to the cultural delights of London, Leonardo Hotel Heathrow Airport is a dream location for the discerning traveller.

- 230 Spacious, soundproofed bedrooms
- 11 meeting rooms
- Maximum capacity - 130 delegates

Location highlights

- 5 minutes from London Heathrow Airport
- Trendy Bar, Restaurant, Cocktail Lounge and Sun Terrace
- Private parking (fee applies)
- Fitness Centre and Essentia Beauty treatment rooms

Leonardo Hotel  
London Heathrow Airport

Bath Road, Sipson,  
West Drayton UB7 0DP  
Tel: 020 899 000 00  
Email: londonheathrow  
reservations@leonardohotels.co.uk

GDS Codes

Amadeus LHR639  
Sabre 54322  
Galileo 29292  
Worldspan 1593







## LEONARDO EDINBURGH - MURRAYFIELD

With magnificent hilltop views,  
Leonardo Hotel Edinburgh Murrayfield provides  
an elevated and tranquil location.

- 111 Spacious bedrooms
- 7 Meeting and events rooms
- Maximum capacity - 320 delegates
- 17m indoor swimming pool

### Location highlights

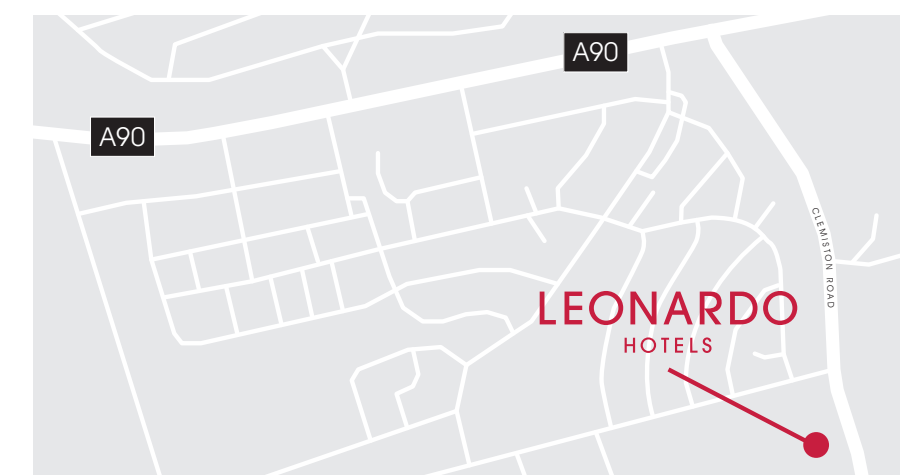
- Scenic Westview Restaurant with stunning views of the city
- Onsite parking for 100 vehicles

### Leonardo Hotel Edinburgh Murrayfield

187 Clermiston Road,  
Edinburgh EH12 6UG  
Tel: 0131 535 99 88  
Email: [edinburghmurrayfield@leonardohotels.co.uk](mailto:edinburghmurrayfield@leonardohotels.co.uk)

### GDS Codes

Amadeus EDI521  
Sabre 31268  
Galileo 71735  
Worldspan 83521







## LEONARDO EDINBURGH - CITY

Steeped in history, Leonardo Hotel Edinburgh City lies within the centre of Scotland's capital.

Originally constructed in 1879 as a maternity hospital, our hotel's charming traditional architecture now houses 52 comfortable rooms and an abundance of modern amenities.

- 52 Spacious bedrooms

### Location highlights

- Beautiful historical building dating back to 1879
- Stylish Bar



### Leonardo Hotel Edinburgh City

79 Lauriston Place,  
Edinburgh EH3 9HZ

Tel: 0131 622 79 79

Email: [simpsonstownhouse@leonardohotels.co.uk](mailto:simpsonstownhouse@leonardohotels.co.uk)

### GDS Codes

Amadeus EDI513

Sabre 34414

Galileo 39321

Worldspan 83513

