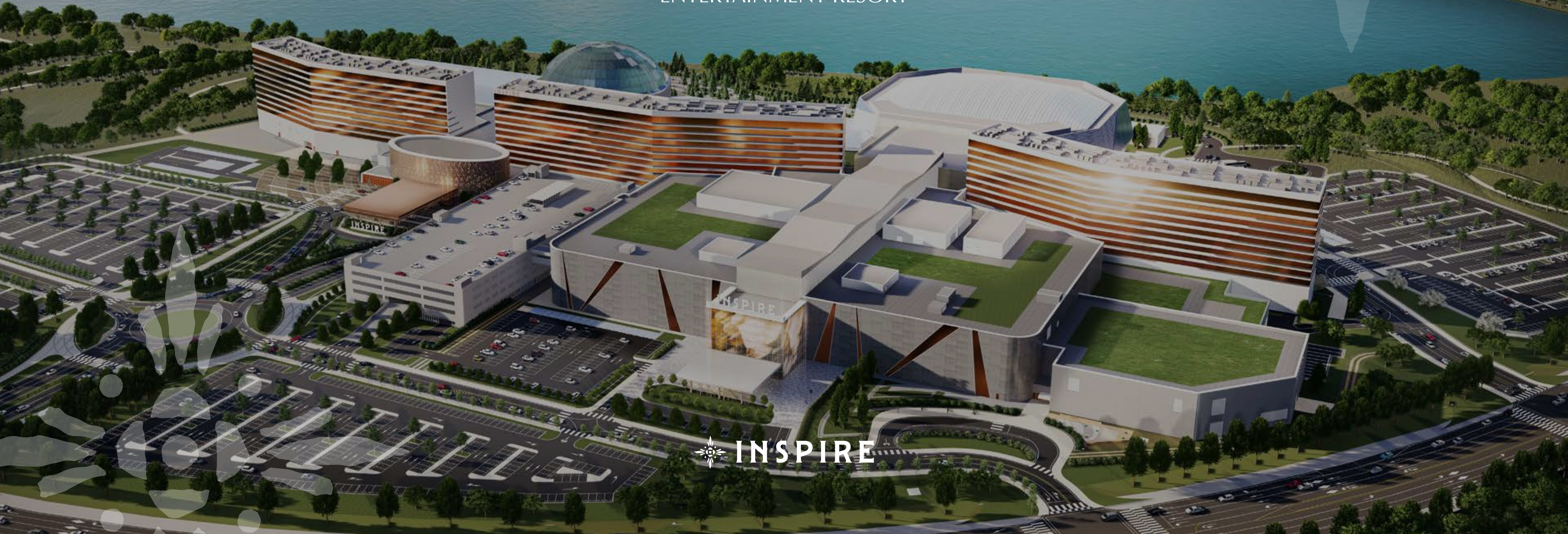


# INSPIRE MEETING SUCCESS

AT KOREA'S NEW GENERATION  
ENTERTAINMENT RESORT





## KOREA'S NEW GENERATION ENTERTAINMENT RESORT



Come and experience Northeast Asia's newest world-class entertainment destination in Incheon, South Korea.

Developed and wholly owned by Mohegan - a master developer and operator of premier global integrated entertainment resorts throughout North America including Connecticut, New Jersey, Washington, Pennsylvania, Nevada, U.S., and Niagara

Falls, Canada - INSPIRE encompasses a total area of more than 500,000 sqm, and its extraordinary facilities offer experiences like no other. The resort will feature three hotel towers, dining, retail and entertainment, including a 15,000-seat state-of-the-art arena, a hemispherical domed climate-controlled indoor pool, meeting & event facilities and a foreigner-only casino.





**01**

Hotel

5-star hotel  
(3 towers)  
with 1,275 rooms

**02**

Meetings  
& Events

State-of-the-art  
meetings & events  
facilities including  
the largest hotel  
ballroom in Korea

**03**

Casino

Foreigner-only  
premium gaming  
venue with  
150 tables, 700 slots  
& electronic games  
and exclusive player  
lounges

**04**

Aurora

150m-long  
immersive digital  
entertainment street

**05**

Arena

Korea's first  
multi-purpose  
performance  
arena with  
15,000 seats

**06**

Retail/Dining/  
Entertainment

A street lined  
with curated retail  
shops, F&B and  
entertainment  
facilities

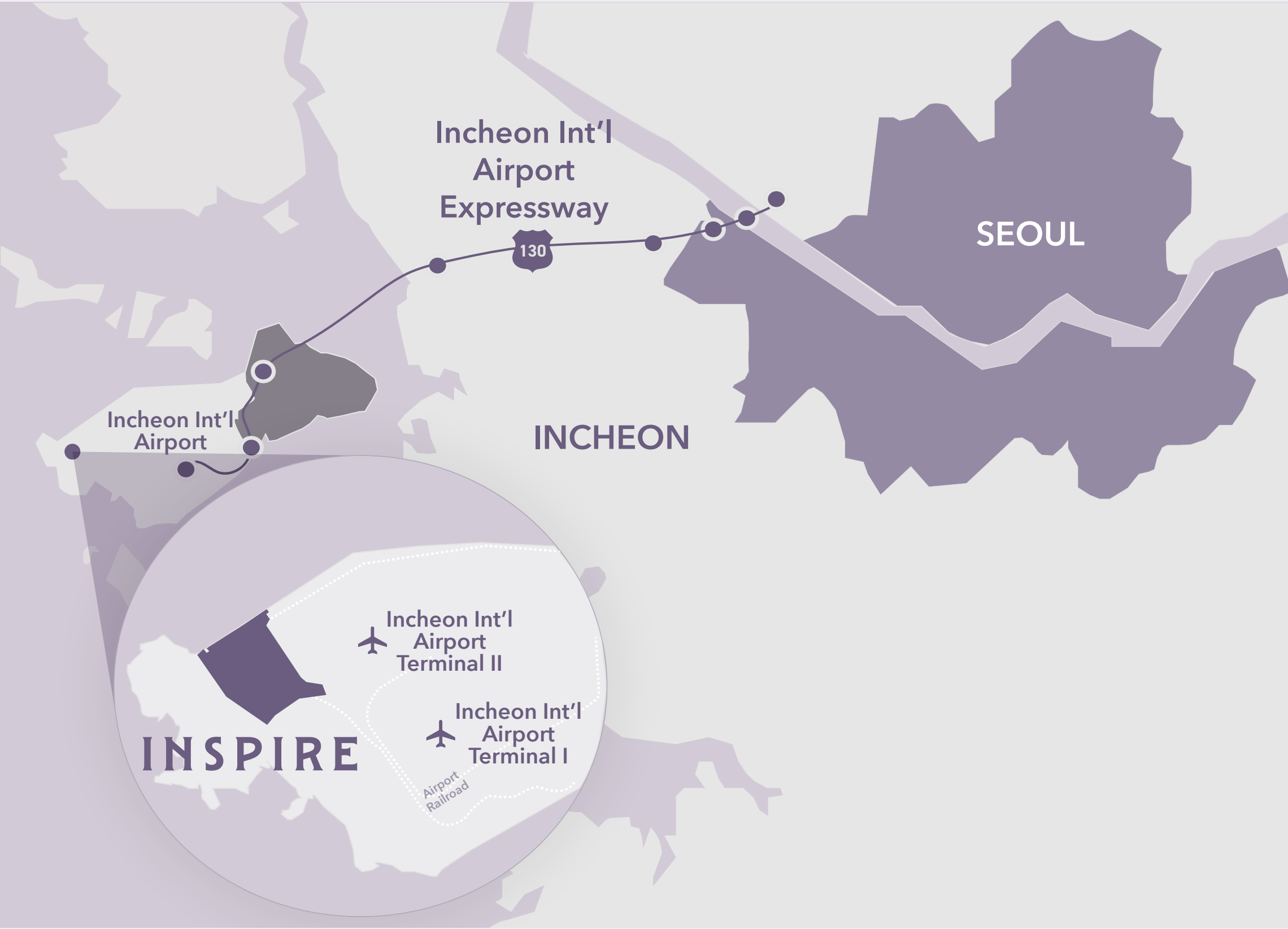
**07**

Splash Bay

Large scale, climate-  
controlled and  
versatile indoor pool  
dome



# STRATEGIC LOCATION



INSPIRE is conveniently situated within the Incheon International Airport's IBC development area. Located next to the Incheon International Airport, the hub of Northeast Asia, INSPIRE Resort is close to major cities in the region and about an hour away from the center of Seoul, one of the world's most dynamic cities.

BEIJING	SHANGHAI	CHENGDU	HONG KONG	TAIPEI	TOKYO
2hr	2hr	4hr	4hr	2.5hr	2.5hr



# INSPIRE CONNECTIVITY





## DYNAMIC AND FLEXIBLE EVENT SPACES



Equipped with state-of-the-art technology and stunning interior, INSPIRE's meeting facilities will become an iconic venue, able to adapt and accommodate events and conferences of all types and sizes, from intimate private events and small corporate meetings to the international conferences and industry-scale trade shows.

AREA: 12,700 sqm

- Dedicated Conference Entrance
- Ballroom & Foyer
- Mid & Small Size Meeting Rooms
- Bridal Room & Pyebaek Room
- Dedicated Boardrooms
- Extensive Business Center

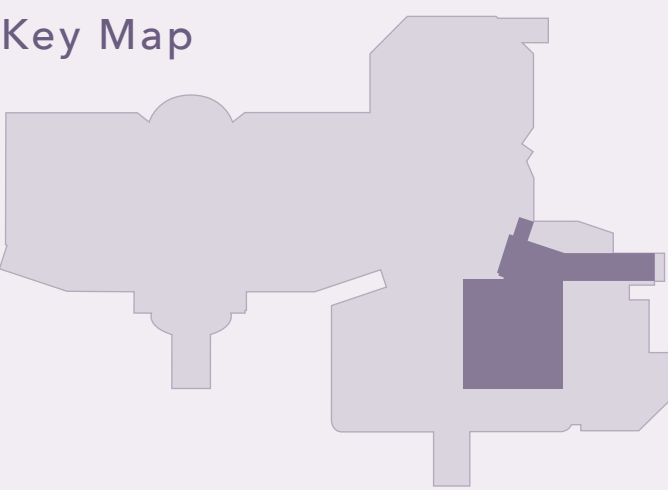


DYNAMIC AND FLEXIBLE EVENT SPACES

MEETINGS & EVENTS

With a wide range of sizes and capacities, the rooms can be easily configured to cater to various event setups such as theatre, classroom, banquet and reception.

Room Name	Room dimensions (Length x Width x Height)			Area	Capacity						
	Ft / M			Sq.Ft / Sqm	Banquet	Reception	Theater	Classroom	Boardroom	U-Shape	Hollow Square
INSPIRE Ballroom	147.6 / 45	188 / 57.3	27.9 / 8.5	29,891 / 2,777	1,800	3,000	2,700	1,650	168	234	300
INSPIRE 1	147.6 / 45	37 / 11.3	27.9 / 8.5	5,554 / 510	360	650	540	324	132	147	162
INSPIRE 2	73.5 / 22.4	40.7 / 12.4	27.9 / 8.5	2,992 / 278	180	350	270	156	66	81	96
INSPIRE 3	73.5 / 22.4	40.7 / 12.4	27.9 / 8.5	2,992 / 278	180	350	270	156	66	81	96
INSPIRE 4	73.5 / 22.4	40.7 / 12.4	27.9 / 8.5	2,992 / 278	180	350	270	156	66	81	96
INSPIRE 5	73.5 / 22.4	40.7 / 12.4	27.9 / 8.5	2,992 / 278	180	350	270	156	66	81	96
INSPIRE 6	49.2 / 15	37 / 11.3	27.9 / 8.5	1,830 / 170	110	180	165	96	42	57	72
INSPIRE 7	49.2 / 15	37 / 11.3	27.9 / 8.5	1,776 / 165	110	180	165	96	42	57	72
INSPIRE 8	49.2 / 15	37 / 11.3	27.9 / 8.5	1,840 / 171	110	180	165	96	42	57	72
Foyer	53.2 / 16.2	285 / 87	13.8 / 4.2	15,177 / 1,410	-	1500	-	-	-	-	-
Mountain	55.7 / 17	147.6 / 45	13.8 / 4.2	8,234 / 765	480	850	720	432	132	153	174
Mountain 1	55.7 / 17	29.8 / 9.1	13.8 / 4.2	1,560 / 154	80	150	120	63	42	48	54
Mountain 2	55.7 / 17	29.2 / 8.9	13.8 / 4.2	1,615 / 150	80	150	120	63	42	48	54
Mountain 3	55.7 / 17	29.2 / 8.9	13.8 / 4.2	1,615 / 150	80	150	120	63	42	48	54
Mountain 4	55.7 / 17	29.2 / 8.9	13.8 / 4.2	1,615 / 150	80	150	120	63	42	48	54
Mountain 5	55.7 / 17	25.9 / 8.6	13.8 / 4.2	1,658 / 145	80	150	120	63	42	48	54
Valley	42.6 / 13	30.5 / 9.3	13.8 / 4.2	1,281 / 119	60	100	90	45	42	48	48
Island	65.6 / 20	38.4 / 11.7	11.5 / 3.5	2,530 / 235	150	270	225	144	54	63	72
Ocean	54.1 / 16.5	30.8 / 9.4	13.8 / 4.2	1,668 / 155	80	150	120	48	42	48	54
River	54.8 / 16.7	30.8 / 9.4	13.8 / 4.2	1,690 / 157	80	150	120	48	42	48	54
Lake	28.5 / 8.7	30.8 / 9.4	13.8 / 4.2	818 / 76	40	70	60	27	18	24	30
Executive Boardroom	27.2 / 8.3	50.2 / 15.3	14.7 / 4.5	1,367 / 127	-	-	-	-	-	30	-
BC Room 1	28.5 / 8.7	13 / 4	8.8 / 2.7	377 / 35	-	-	-	-	10	-	-
BC Room 2	13.1 / 4	16.4 / 5	8.8 / 2.7	215 / 20	-	-	-	-	5	-	-



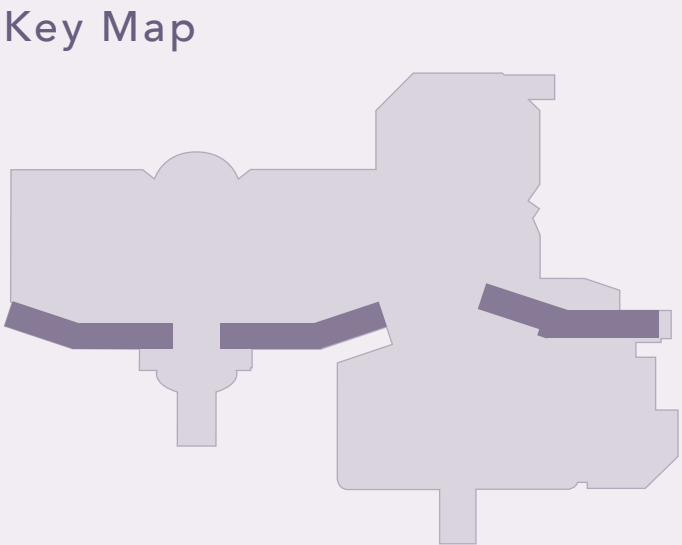


# INSPIRE RESORT LIVING



Three luxurious 5-star hotel towers, each boasting their own unique design concept. Comprised of 1,275 rooms, suites and villas are all accented with natural and cultural inspiration. Each guestroom is curated by world-renowned design studios, to create an elegant and relaxing retreat, away from the excitement from the rest of the resort.

Room Name	Room Type	Area		No. of Rooms
		sqm	PY	
Earth Tower	Standard Room	44-55	13-16	508
	Suite Room	75-80	22-24	8
Sky Tower	Standard Room	44-68	13-21	119
	Suite Room	88-131	26-40	205
	Villa	504-522	152-158	5
Wind Tower	Standard Room	44-58	13-18	364
	Suite Room	81-131	25-40	66
Total				1,275



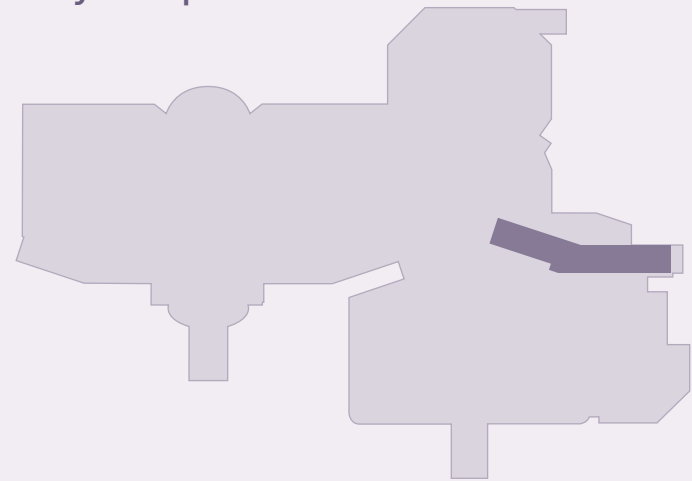


# INSPIRE RESORT LIVING

## WIND TOWER

(430 rooms & suites)

Key Map



The Wind Tower's design palette and elements are both timeless and contemporary, evoking a sense of modern class. The multifunctional design and the classy lounge ambiance strike a balance between style and functionality. The tower is directly connected to INSPIRE meetings & events facilities, providing easy access for business travelers or event participants.

### Room Information

- Free WIFI
- 65-inch UHD SMART TV
- In-room Safety Box
- In-room Tablet
- Free Mini Bar (per stay)
- Coffee Machine with Capsules
- Premium Tea
- Luxury Bath Amenities
- Rain Shower, Bathtub
- Electric Kettle
- Iron & Iron Board





# INSPIRE RESORT LIVING

## EARTH TOWER

(516 rooms & suites)

Key Map



The Earth Tower is inspired by the Korean landscape's flora and fauna. Celebrating nature, the artistic and whimsical use of color, texture, and details of the Earth Tower's rooms, are sure to transport guests to a modern and luxurious getaway.

### Room Information

- Free WIFI
- 65-inch UHD SMART TV
- In-room Safety Box
- In-room Tablet
- Free Mini Bar (per stay)
- Coffee Machine with Capsules
- Premium Tea
- Luxury Bath Amenities
- Rain Shower, Bathtub
- Electric Kettle
- Iron & Iron Board



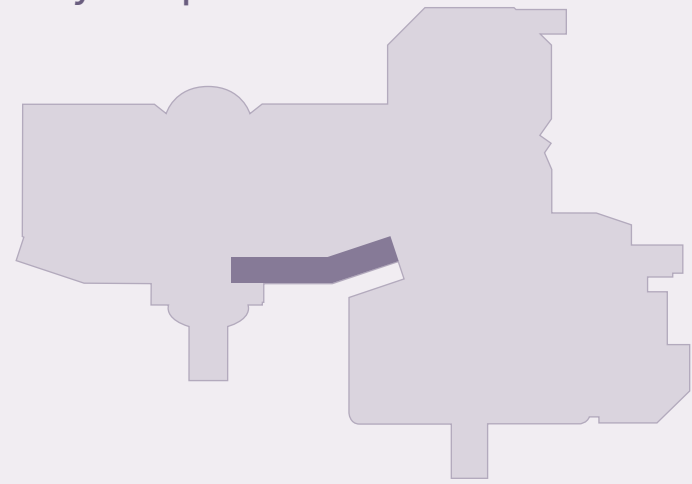


# INSPIRE RESORT LIVING

## SKY TOWER

(329 rooms, suites & villas)

Key Map



Inspired by the sky, the rooms at Sky Tower are curated to embody the vibrant sunrise. The Sky Tower features an aspirational color palette, refined wood and stone finishes, and custom-designed art to elevate the rich, warm, and inviting ambience.

### Room Information

- Free WIFI
- 65-inch UHD SMART TV
- In-room Safety Box
- In-room Tablet
- Free Mini Bar (per stay)
- Coffee Machine with Capsules
- Premium Tea
- Luxury Bath Amenities
- Rain Shower, Bathtub
- Electric Kettle
- Iron & Iron Board





# INSPIRE RESORT LIVING

## SKY VILLAS

The villas offer a glamorous accommodation imbued with the luxury of a hotel but built with the intimacy of a private home in mind. Luxurious villa suites include a private VIP entrance, a secluded patio or balcony for outdoor dining.

### Room Information

- Outdoor Private Pool / Jacuzzi / Cabana
- Private Bar
- Free WIFI
- 85-inch UHD SMART TV
- In-room Safety Box
- In-room Tablet
- Wine Cellar
- Free Mini Bar (per stay)
- Air Purifier
- Coffee Machine with Capsules
- Premium Tea
- Luxury Bath Amenities
- Rain Shower, Bathtub
- Electric Kettle
- Iron & Iron Board





INSPIRE RESORT LIVING

# SPA, INDOOR POOL, FITNESS CENTER

INSPIRE Spa & Fitness creates a personalized luxury retreat for every customer. Experience ultimate wellness and relaxation with services ranging from facials to foot scrubs to deep tissue massages. Facilitating easy access, the Spa is connected to the hotel towers and is also annexed to an indoor pool and fitness center.

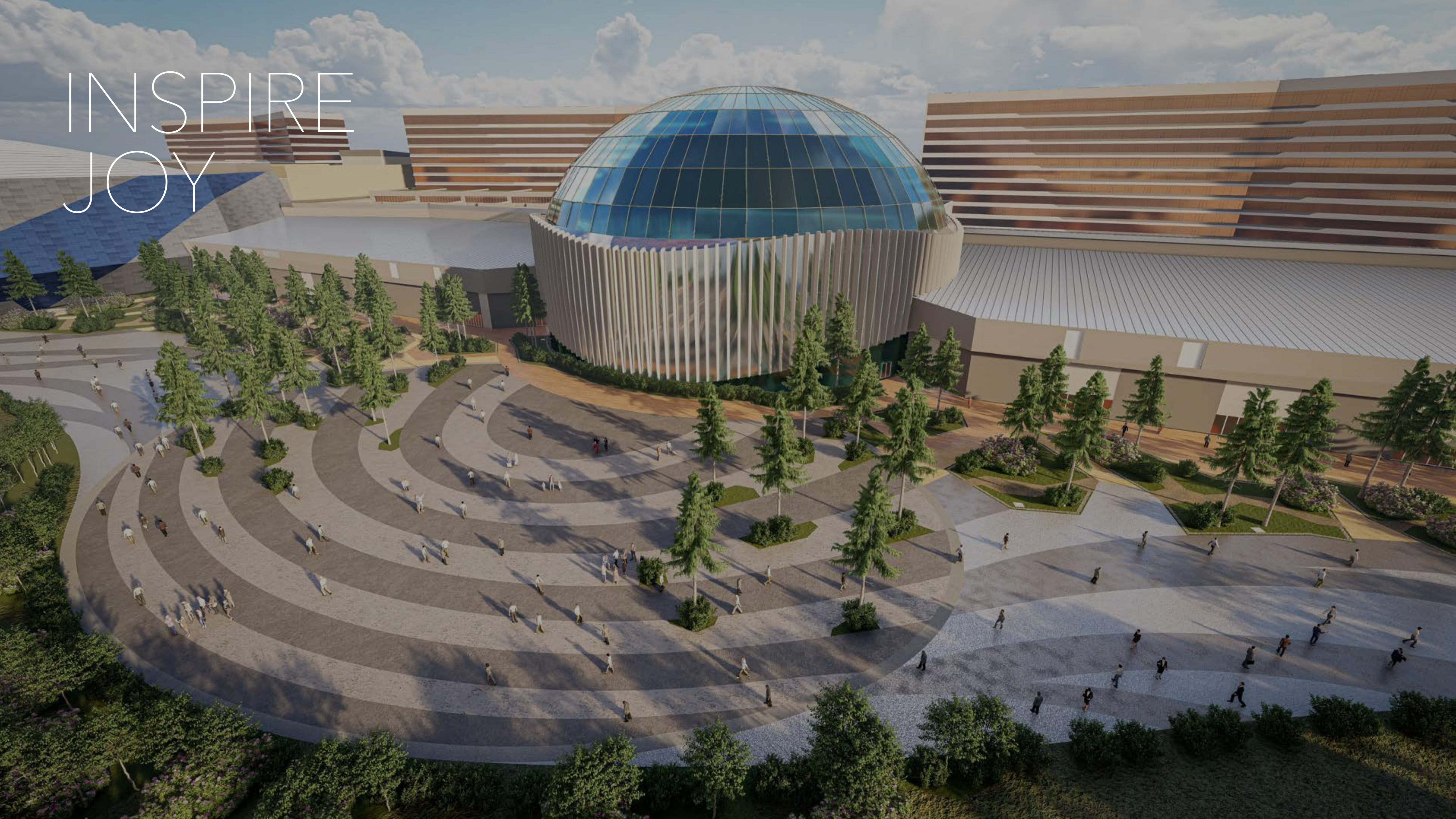
## Key Facilities

- Spa: 1,606 sqm
- Indoor Pool: 604 sqm
- Fitness Center: 213 sqm





INSPIRE  
JOY





# INSPIRE AN EPICUREAN JOURNEY

INSPIRE's dining options offer the ultimate gourmet experiences that celebrate gastronomic diversity, ranging from fresh local food to exotic restaurants, bars and lounges.

To complement our diverse resort amenities and cater to our local and international guests, we offer a dazzling array of dining options throughout the resort. From the casual food hall to live buffet to fine dining restaurants, our wide range of F&B offerings will ensure that our guests will never run out of their dining options during their stay at INSPIRE.





# DINING



## International Buffet

The organic layout of the buffet brings out the true spirit of a modern, street-market dining experiences. This international buffet tempts guests with an array of culinary options, including 6 live buffet stations featuring the freshest farm-to-table ingredients.



## Korean Chicken Pub

This dining is designed as a love letter to the Korean culture's favorite combo of fried chicken and cold beer. The space includes a walk-up, self-serve, "Bottoms Up" concept where guests are invited to fill their cups from a preprogrammed draft beer dispenser.



## Japanese

With entries from both the Gaming floor and Aurora, guests have multiple options for savoring Japanese cuisine. The Japanese restaurant features premium quality, market-fresh ingredients grown and prepared especially by the locals.



## Chinese

Depending on one's entry (street or gaming floor) and mission, the experience offered is both high-end and fast-casual. Guests can sit for a quick bite before continuing on their Digital Street journey or sit down to a lingering family-style dinner of roast duck in a private, round-table dining.



## French

Parisian Bistro is a French restaurant serving affordable food and drinks to socialize and unwind with. Its interior design is inspired by the Hot Air Balloon, the first free flight carrying a human that took place in Paris in 1783. This pairing of dining and entertainment will mesmerize guests seeking an enriched dining experience in a classical, refined ambiance.

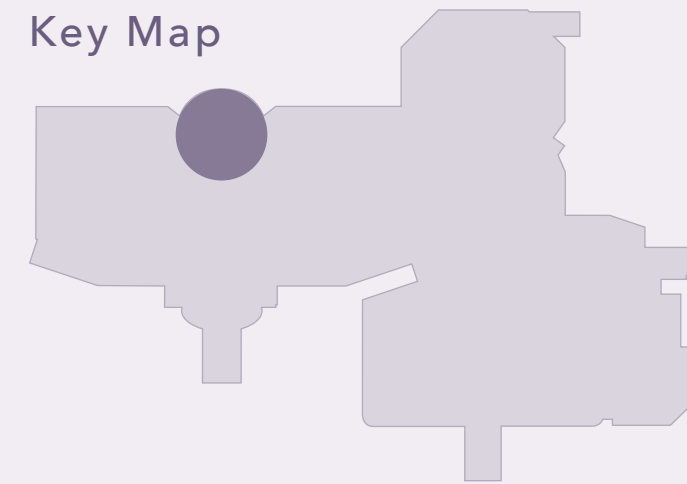


## Steak House

INSPIRE's signature steakhouse will serve an unforgettable dining experience with amusing and audacious features such as live Alaskan king crab tanks & a butcher shop. The interior design is bold but inspired to be modern and edgy.



# SPLASH BAY



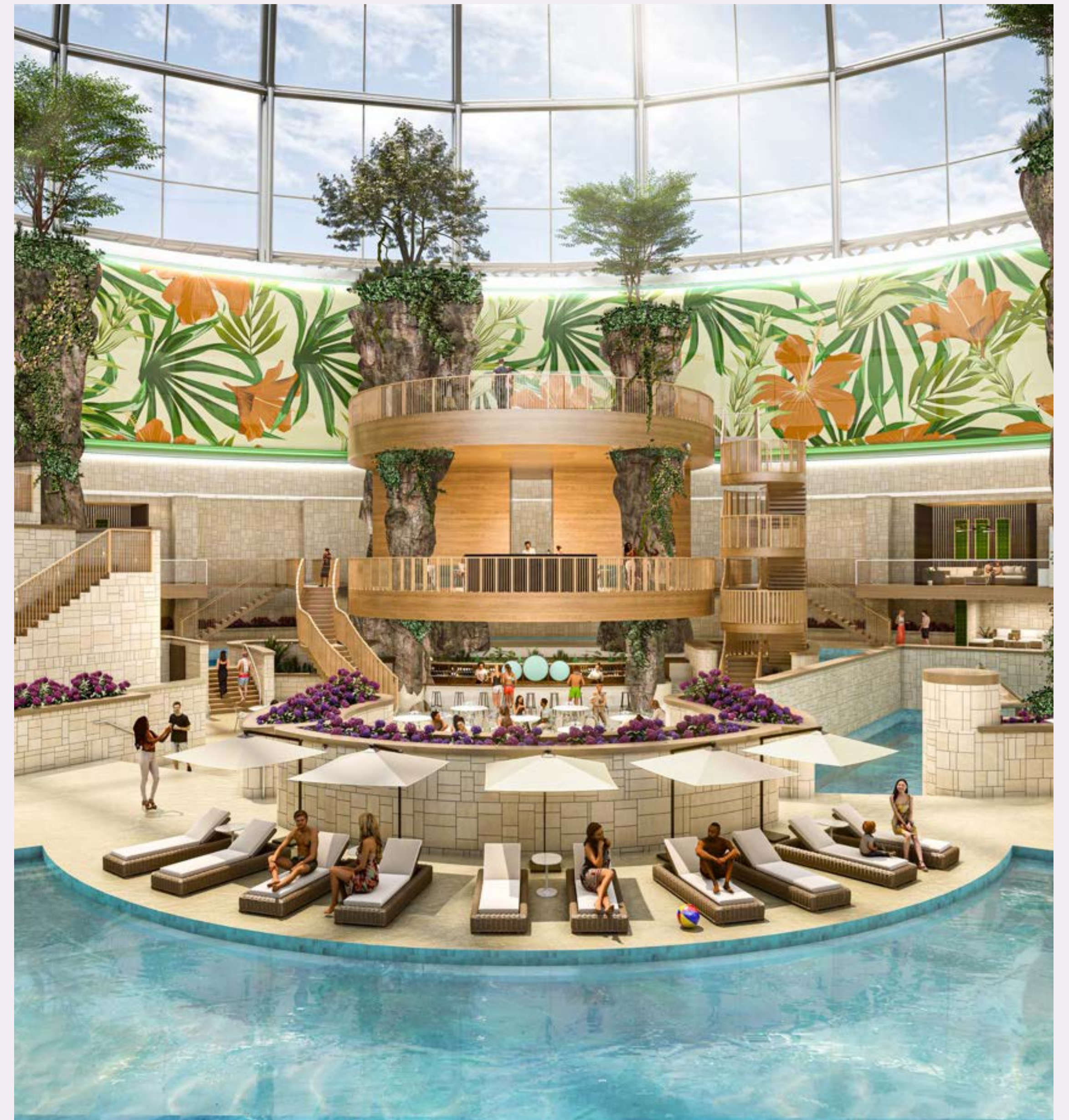
Splash Bay is a dome-shaped, multi-purpose indoor water park with an exotic ambience of a tropical garden throughout the year. This is an optimal venue to host a range of unique events thanks to its versatile structure for tailored programs. Located in the center of Splash Bay, W-shaped pool is installed with a movable floor. With this, the water depth can be set to different heights – from flat on the pool bottom to the same height as the water surface – in order to customize the pool for specific purposes. When the floor elevates to the ground level, people can enjoy this central area like a floating island. In addition, there is a stage equipped with DJ booth in front of the versatile pool. With these facilities, visitors can swim and also enjoy performances on stage when a private event is hosted.

## Key Facilities

- 900 seats for performances
- 560 seats for dining
- Bars
- Cabanas
- Water Slides, Lazy Pool
- Pool Lounge

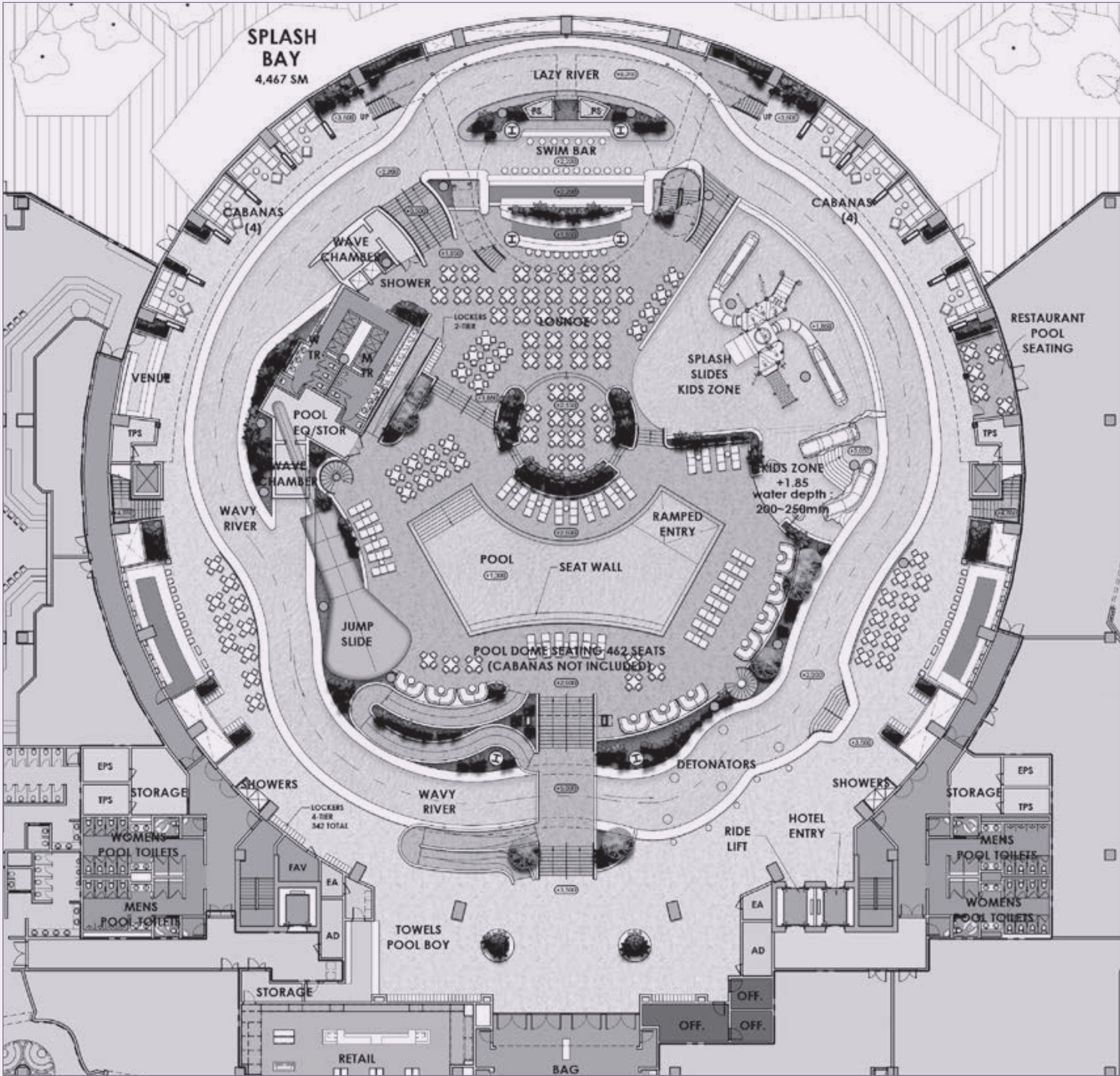
## Programming possibilities include

- Exclusive day and night pool parties
- Corporate events
- Product launches
- Brand events
- VIP showcase
- Specially designed activities  
such as floating yoga, dive-in movies
- Water themed festivals

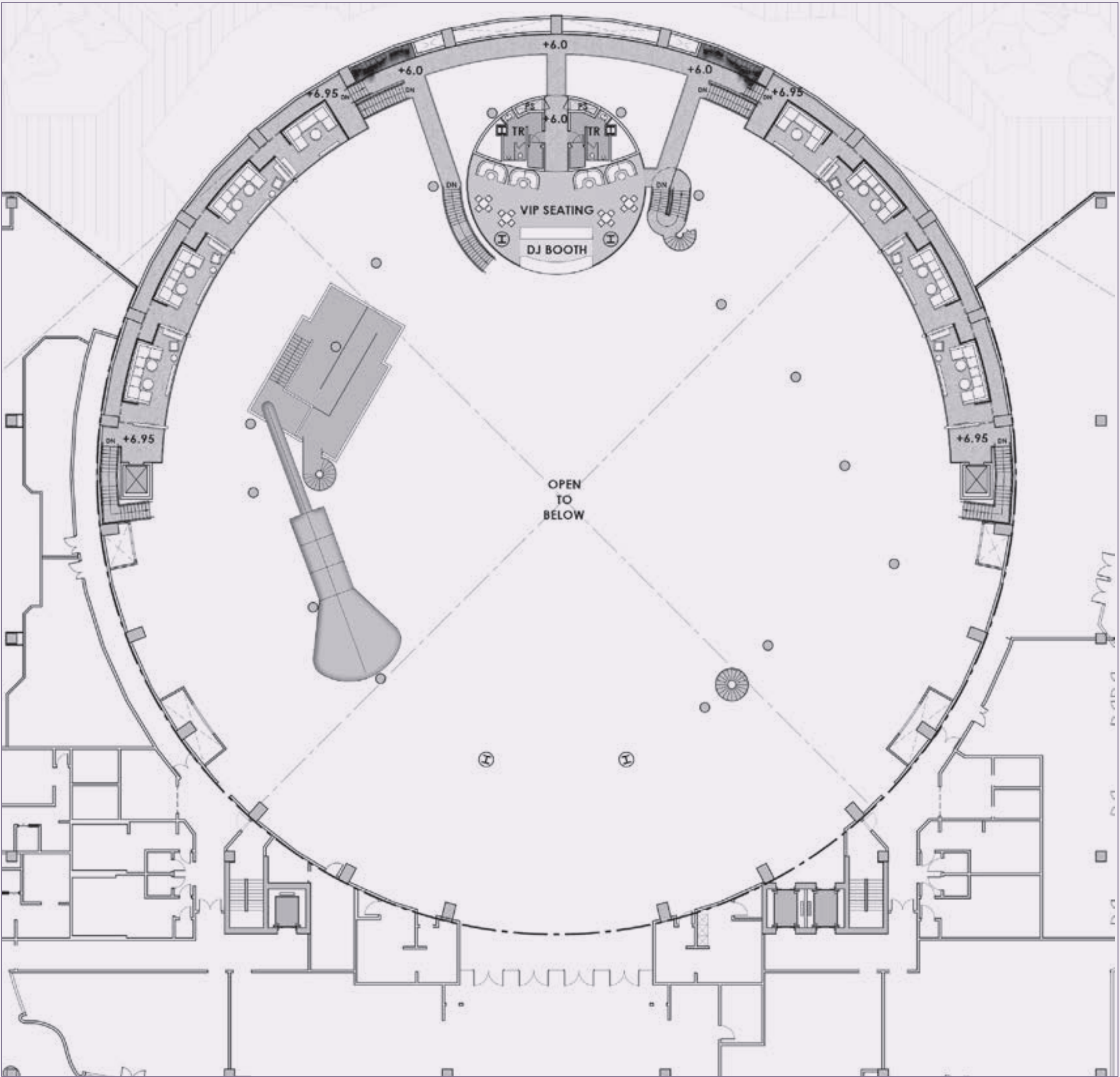




SPLASH BAY  
GROUND LEVEL PLAN



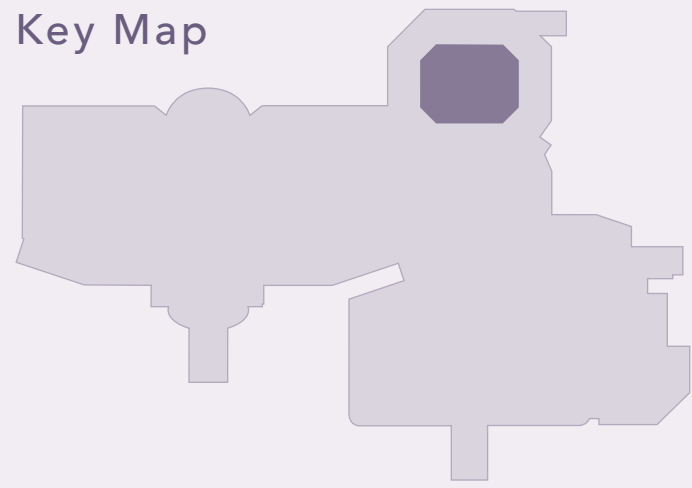
SPLASH BAY  
LEVEL 02 PLAN





# ARENA

Key Map



INSPIRE Arena is a major first-of-its-kind, multi purpose entertainment facility, poised to emerge as the leading entertainment venue in South Korea. The 15,000 seat Arena is designed to host a variety of events, including music concerts, major sports matches (basketball, MMA, boxing, tennis), award ceremonies, e-sports tournaments and large expos.

AREA: 16,136 sqm

## Key Facilities

- 15,000+ seat performance hall
- 25 luxury sky boxes
- Ultra Lounge
- Club Lounge

## Highlights

- Multi-functional space and flexible stage design for music concerts, award ceremonies, large expos
- Easy load in and out for big event productions such as car launches, fashion shows, special gala events
- Huge seating capacity for sports tournaments, boxing matches, mixed martial arts, e-sports tournaments
- State-of-the-art audio-visual equipment with top class in-house technical support





# DISCOVERY PARK

Discovery Park is an outdoor entertainment area located in the wide-open space at the west end of the Resort, adjacent to the natural shoreline to its north. This park is designed to be a playground for kids of all ages, creatively programmed to engage culture and nature with entertainment.

AREA: 100,443 sqm

## Highlights

- The Maze
- Forest Hill
- Tequila Sunset
- Picnic Grove

The Grand Lawn is a massive green area that can accommodate seasonal programs and major festival events.

AREA: 43,290 sqm

## Programming possibilities include

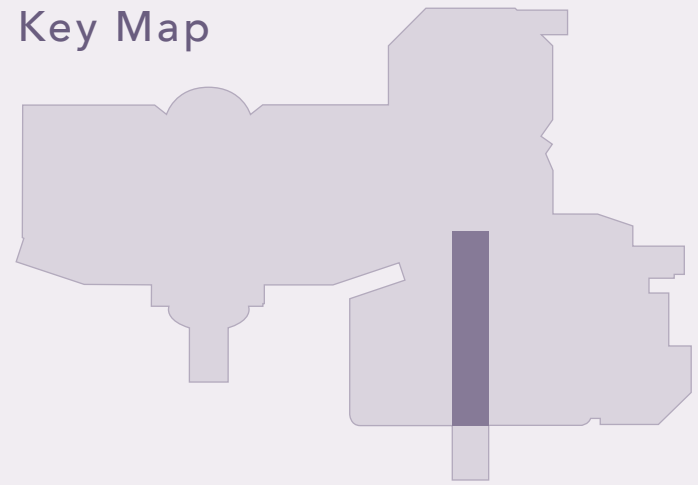
- Large scale outdoor concerts
- Seasonal programs like Oktoberfest, Summer beer garden festival
- Nature-friendly themed corporate team activities, family day events
- Water-themed festivals





# AURORA

Key Map



Aurora offers an immersive digital entertainment experience where surreal images and scenes spill over giant LEDs covering its 150m-high ceiling and walls. Compelling visual elements showcased on massive LED screens and various media art content renewed on each visit will spark a sense of awe and mystery never felt before.

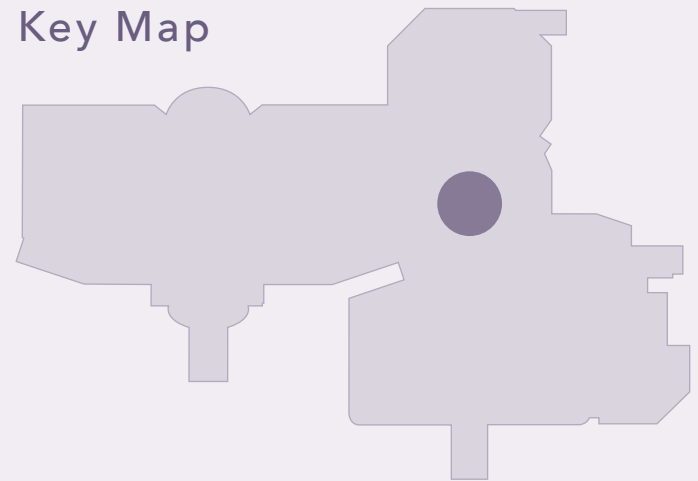
Aurora stretches from the southern end of the resort to the arena entrance, serving as a space for guests to enjoy a diverse array of restaurants, bars, shops and live performance. Aurora is connected to the arena, casino, conference center.





# ROTUNDA AT ARENA

Key Map



Rotunda is a massive circular hall, 30 meter in diameter and 20 meter high, adjacent to the entrance of the ARENA.

Installed as a centerpiece in the middle is a kinetic chandelier consisting of 156 LED panels in total.





# INSPIRE MALL

INSPIRE Mall is not just a place for shopping, but a complex cultural space combining outstanding elements of art, design, innovation and technology to create an alluring juxtaposition. This area consists of carefully curated international and local brands, indoor and outdoor plazas and diverse entertainment offerings, including the immersive media art exhibition.

INSPIRE Mall blends the fun and playful vibe of parks and plazas with an indoor retail experience, offering delightful surprises at every turn.

- International and domestic brands
- 'Nodes of Wonder' spaces
- Immersive media art exhibitions



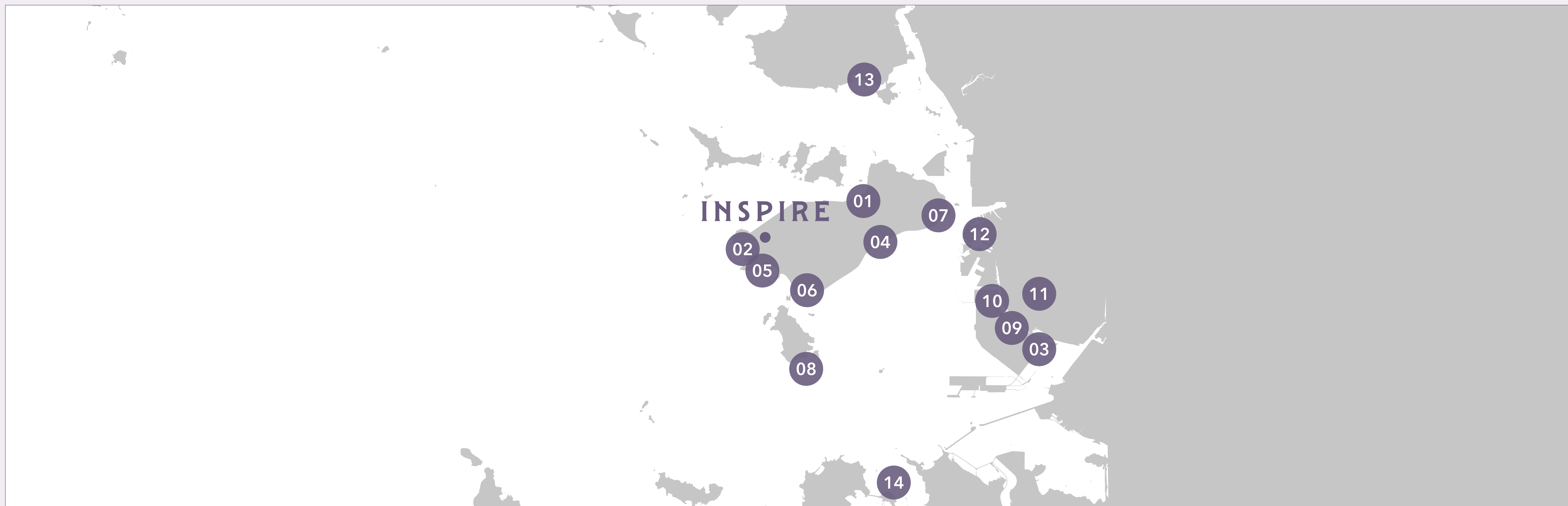


# INSPIRE ADVENTURE





## ACTIVITIES & ATTRACTIONS TO ENJOY NEAR THE RESORT



1. CLUB72CC (17km, 20mins)

2. Wangsan Marina Yacht Tour (3km, 5mins)

3. Hyundai Premium Outlet Songdo (35km, 30mins)

4. BMW Driving Center (13km, 15mins)

5. Eurwangni Beach (2.6km, 5mins)

6. Masian Beach Mudflat Experience (7km, 10mins)

7. Yeongjong Seaside Rail Bike (25km, 27mins)

8. Muui Bada Nuri-gil Hiking Trails (17km, 29mins)

9. Songdo Central Park (33km, 32mins)

10. Songdo G Tower Observatory (35km, 35mins)

11. Memorial Hall for Incheon Landing Operation (34km, 33mins)

12. Wolmi Theme Park (42km, 52mins)

13. Jeondeungsa Temple Stay (50km, 1hr)

14. Seonjaedo & Mokseom Trekking (70km, 1hr 15mins)

\* Driving time



## 01 CLUB72CC

(17km, 20mins)



[Image source] Incheon Tourism Organization

**Build unforgettable golf rounding memories with a breathtaking view at one of Korea's top 10 public golf courses.**

CLUB72 Golf & Resort (formerly SKY72CC) offers a variety of golf courses and what's called a 'Dream Golf Range'- a large circular golf range with 300 auto tee up platforms. Meanwhile, the club's 'Ocean Course' was selected as one of Korea's top 10 public gold courses in 2022 and has hosted the LPGA for 11 consecutive years. If what you want is a memorable golf rounding experience with a stunning sunset in the backdrop, then 'Sky Course' would be your go-to option. The resort provides a golf equipment rental service. Make sure to book in advance. ([kxleisure.com](http://kxleisure.com))

## 02 Wangsan Marina Yacht Tour

(3km, 5mins)



[Image source] Incheon Tourism Organization, Incheon Tour

**Enjoy an unobstructed view of the West Sea on a luxury yacht!**

Wangsan Marina boasts the latest facilities and the largest scale among marinas near the metropolitan area. The marina provides the general public with sightseeing tours on yachts. During a 40-minute tour, you'll get to sail around Eurwangni Beach, Silmi Island and Muui Island. Please book in advance, and hurry if you're planning on boarding the sunset yacht. ([hdcosmos.com](http://hdcosmos.com))



## 03 Hyundai Premium Outlet Songdo

(35km, 30mins)



[Image source] Incheon Tourism Organization

**Looking for a place to shop luxury designer shoes, bags and clothes at a bargain?**

Hyundai Premium Outlet Songdo is the country's first premium outlet located in the center of Songdo and Korea's largest multipurpose cultural complex. Your checklist for brand names will surely be satisfied with over 300 brands in stock. The place is now widely recognized and loved by the public for its attempt to break the mold and succeeding in reinventing an outlet mall into a new and trendy place of fun, excitement and respite for family customers.

## 04 BMW Driving Center

(13km, 15mins)



[Image source] Incheon Free Economic Zone

**If you love an exhilarating driving experience, this is the optimal place to visit.**

Being the first-of-its-kind in Asia, BMW Driving Center offers a unique opportunity to experience all that BMW, BMW Motorrad, MINI and Rolls-Royce has to offer in full throttle. The BMW Driving Center features eight tracks for professional driving. You can safely experience the performance of BMW and MINI models on courses that meet the highest FIA (Fédération Internationale de l'Automobile) standards. Please make a reservation in advance.

([www.bmw-driving-center.co.kr](http://www.bmw-driving-center.co.kr))



## 05 Eurwangni Beach

(2.6km, 5mins)



[Image source] Incheon Tourism Organization

### Savor the beautiful beach & fresh seafood combo at Eurwangni Beach.

Eurwangni Beach boasts a beautiful view at sunset. With a 700-meter-long sandy beach and on average 1.5-meter-deep water, the Beach is renowned for its scenic beauty with lush pine groves dotted across lava rocks lining its sides. After sauntering along the beach, don't forget to try out a plate of grilled clams. A range of seafood off the coast of Incheon is scooped up by local restaurants as soon as it reaches the fishing port, so you can always expect super-fresh seafood!

## 06 Masian Beach Mudflat Experience INSPIRE

(7km, 10mins)



[Image source] Incheon Tour

### Immerse yourself in the West Sea, ankle-deep in clam digging!

Located in Yeongjongdo Island, Masian mudflat experience program has various activities in store for visitors, such as clam digging and net fishing. A lot of tourists visit here every year to dabble in exotic activities. Even it's your first-time digging clams or don't have any tools to speak of, a day full of fun and excitement is guaranteed catching clams and chasing shore crabs. Boots, hoe, and net are included in the package. Don't forget to make a reservation ahead. (call at +82-10-6855-3223)



## 07 Yeongjong Seaside Rail Bike

(25km, 27mins)



[Image source] Incheon Tourism Organization

**Want to beat stress the simple way? Then, hop on a seaside rail bike into the captivating coastline scenery.**

Seaside Rail Bike, a 4-seater rail bike, runs on a 5.6-kilometer round-trip track along the coast. The open sea at a stone's throw to the rail provides an amazing sightseeing experience by pulling Wolmi Island and Incheon Bridge into the view. What's more, a landscape waterfall and various other facilities notch up the fun factor while passengers pedal along the tracks.

## 08 Muui Bada Nuri-gil Hiking Trails

(17km, 29mins)



[Image source] Incheon Tourism Organization

**A gentle, sloping climb with sensational coastal views of the West Sea, Muui Bada Nuri-gil is a perfect trail where mountains blend in beautiful harmony with the sea.**

The place became a famous destination through dramas filmed in nearby venues - Hanagae Beach and Horyonggoksan located in neighboring island, Muuido. More recently, a growing number of visitors have flocked to Muuido since the bridge connecting Muuido and Somuuido was built to completion and the Muui Bada Nuri-gil paved. To fully appreciate the beauty of Somuui Island, Muui Bada Nuri-gil Course 1 is a must-visit path, which will take around an hour to trek while drinking in the view of a spectacular seascape of the West Sea.



## 09 Songdo Central Park

(33km, 32mins)



[Image source] Incheon Tour

**If you want to soak in the ambience of the city center, take a stroll in Songdo Central Park.**

Songdo Central Park is an urban park in the heart of the newly built city of Songdo and the first seawater park in Korea with various water sports to enjoy - water taxi, canoe, paddle boat, family boat and many more. Other than these extra features, it is a great place for a walk and relaxation. But the most beautiful views come after sunset and continue into the night, where the whole place glimmers and sparkles with the lights of surrounding buildings and reflections across the stream.

## 10 Songdo G Tower Observatory

(35km, 35mins)



[Image source] Incheon Free Economic Zone

**Looking for a free observatory to get a panoramic vista of Songdo?**

Then, Sky Garden at G-Tower is your answer. The Sky Garden Observatory sits atop the G-Tower on the 33rd floor, which is open to visitors during the daytime for free. Here you will be able to marvel at the sweeping view of the Songdo city center and Incheon Bridge. A free bicycle rental service is also available on 1st floor to explore the city on ground after enjoying it at a height.



## 11 Memorial Hall for Incheon Landing Operation

(34km, 33mins)



[Image source] Incheon Tourism Organization

**Learn about one of the most important milestones of the Korean War.**

The Memorial Hall for Incheon Landing Operation is a war memorial hall built to commemorate the Incheon Landing Operation spearheaded by General MacArthur, the supreme commander of UN Forces during the Korean War. The memorial hall features various facilities including a rest area and a performance hall. This hall shows pictures comparing the ways of life and military equipment between South and North Korea. If time allows, you can hike up the hill behind the hall which leads to a breathtaking view of Songdo and the Incheon Bridge.

## 12 Wolmi Theme Park

(42km, 52mins)

INSPIRE



[Image source] Incheon Tourism Organization

**Want a thrilling experience that gives you an adrenaline rush? Then, Wolmi Theme Park will pack a punch.**

Wolmi Theme Park is a popular amusement park complex located on Wolmi Island. The park has various rides, such as the 70-meter-high Hyper Shoot Drop, Tagada Disco, a two-story Viking Ship, a 115-meter-high Ferris Wheel, and other exciting attractions. It also houses a large indoor children's playground that includes water activity amenities such as mini flume ride, water boats, and water ball playing, as well as a 4D room. All these features make the complex a perfect spot for visitors of all ages.



## 13 Jeondeungsa Temple Stay

(50km, 1hr)



[Image source] Incheon Tourism Organization

**Embark on a spiritual journey and find inner peace at Jeondeungsa Temple.**

Jeondeungsa is a Buddhist temple built over 1500 years ago on Ganghwa Island. During the temple stay program, you'll experience the daily monastic life of Korean Buddhist monks and participate in Buddhist rituals such as the Zen meditation. Escape from the hustle and bustle of the city to a serene temple and find your true-self through a one-of-a-kind experience! Room, uniform (vest, pants) and meals are included in the program. Please book in advance. ([www.templestay.com](http://www.templestay.com) / English inquiries: +82-32-937-0152)

## 14 Seonjaedo & Mokseom Trekking

(70km, 1hr 15mins)



[Image source] Incheon Tourism Organization, Incheon Tour

**“The crossing of the sea” in Seonjae Island will blow you away.**

Seonjaedo was ranked first among the “33 Beautiful Islands to visit in South Korea” selected by CNN. An exotic landscape of the sea, islands stretching out endlessly and the wide-open mud flat engages tourists year-round. Here's a must-do if you decide to visit - that is to observe “the crossing of the sea,” which happens twice a day. To the south of Seonjaedo, an uninhabited island called ‘Mokseom’ can be found. When the tide is out, a passage to the Mokseom surfaces like magic. Please check the time when the pathway emerges before heading out to the island.





*Where Inspiration Sets You Free*

For more information request,  
please contact [sales@inspireer.com](mailto:sales@inspireer.com)