



# Welcome to a place of possibilities.

A convention centre is a place of possibilities – where a single meeting can shift a whole company, a wedding can entwine two lives, or a remark at a conference can plant a seed that changes the world. It's where ideas come to life and build momentum. And at the Calgary TELUS Convention Centre, our skilled Signature Event team and limitless facility options allow us to bring all those possibilities to you.

To ensure we have the best events in every possible way, we dedicate ourselves to making these moments possible. We collaborate with our partners in the area and the wonderfully diverse city of Calgary around us, creating deep and immersive experiences

where people, organizations, industries, and governments come together and spark with a genuine connection. This effect reaches out far beyond our walls – woven as they are into the fabric of a vibrant downtown core – and leaves a powerfully distinct impression on our patrons, guests, and planners, wherever they call home.

From grand celebrations to irreplaceable intimate moments, make every event a signature of you. Make the most of every moment at the CTCC.

**Facility Overview** 4

**Exhibition Hall** 5

**TELUS Rooms** 11

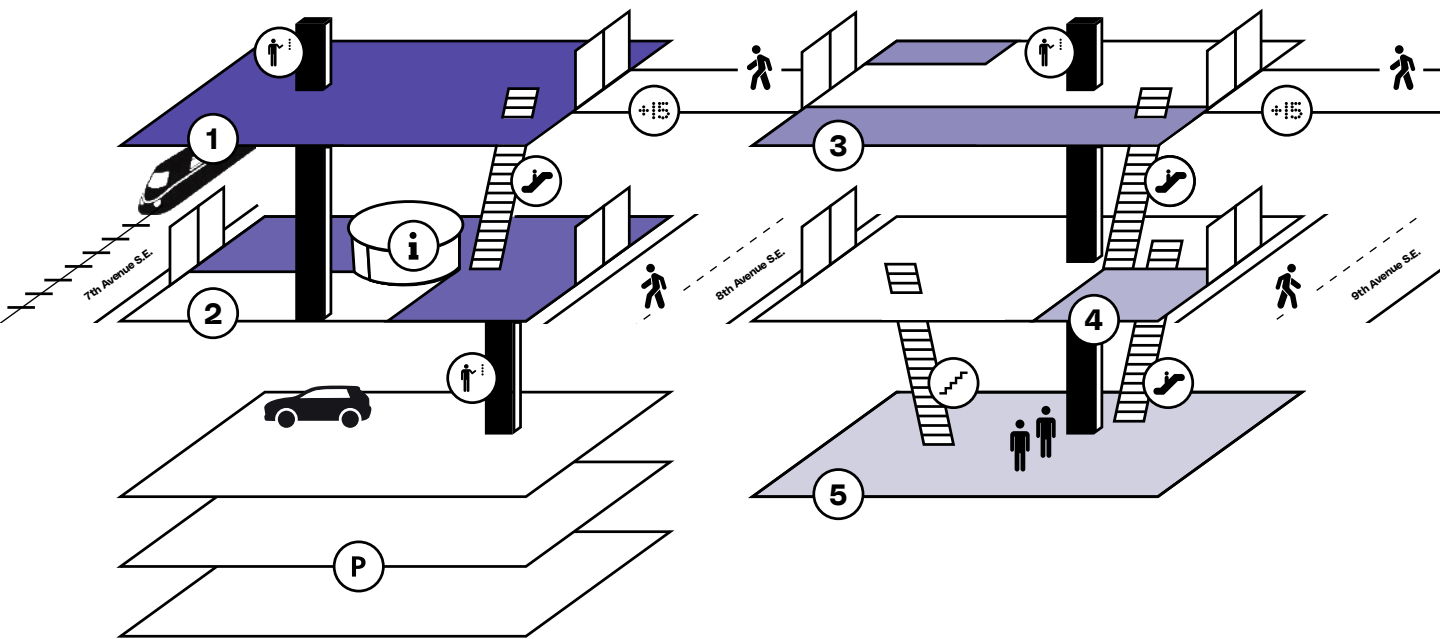
**Glen Rooms** 17






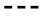

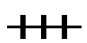
**Ideation Centre** 23

**Macleod Hall** 29



# Facility Overview



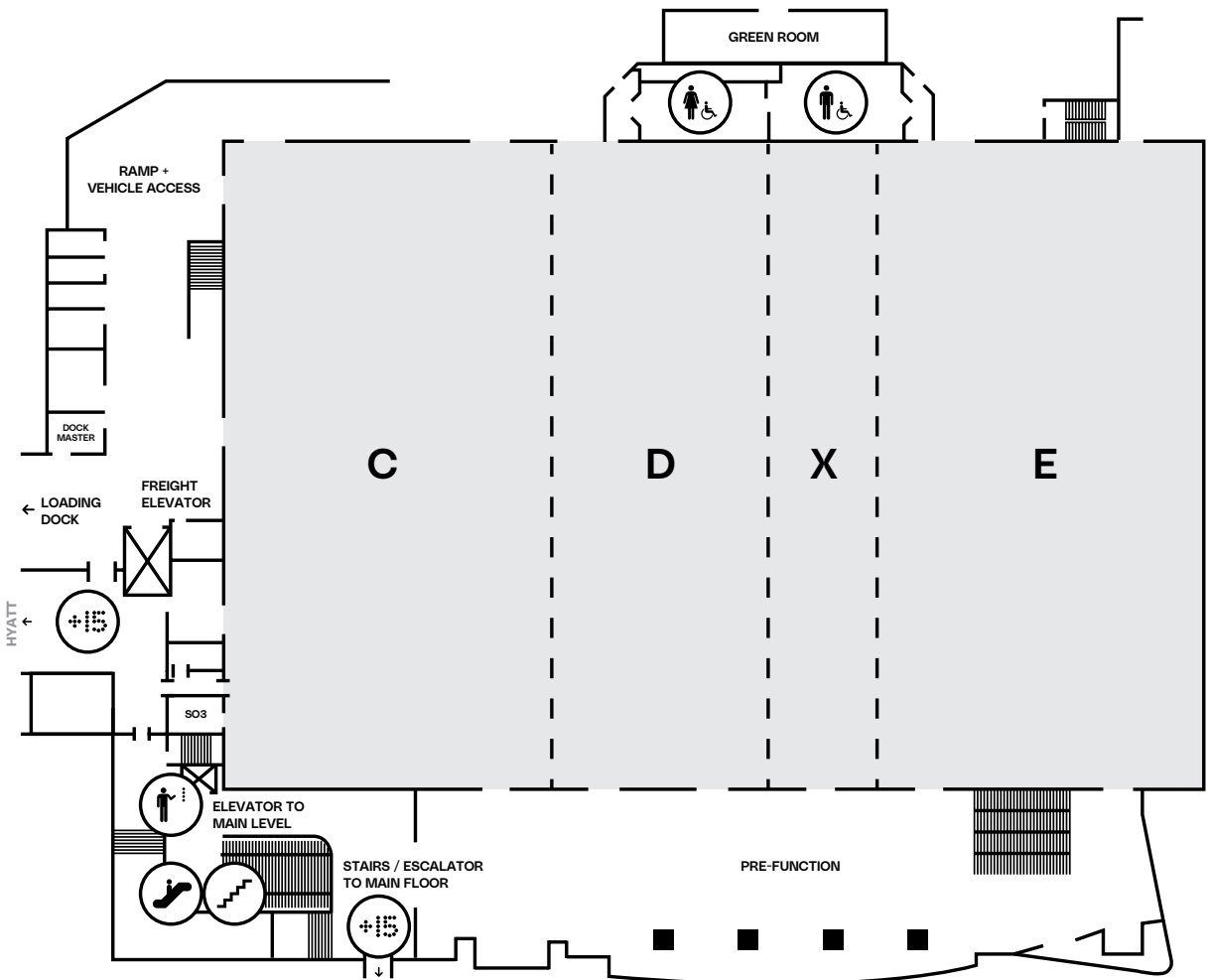
<b>1</b> Exhibition Hall	<b>2</b> TELUS Rooms	<b>3</b> Glen Rooms	<b>4</b> Ideation Centre	
<b>5</b> Macleod Hall	 Skywalk	<b>P</b> Parking	 Elevator	 Escalator
 Stairs	 Road	 Guest Services	 LRT: Centre Street or 1 Street SW	

# Exhibition Hall

## North Building Second Level



When you've got a big vision, you need a big room to match. Exhibition Hall delivers plenty of it in an acclaimed space that has hosted everything - from receptions and awards ceremonies to speaking engagements from former U.S. presidents and international royalty.



Room	Feet	ft <sup>2</sup>	Ceiling Height	Meters	m <sup>2</sup>	Rounds of 12	Reception	Theater Style	Class Room	Booth 10x10
<b>North Building</b>										
Exhibition Hall C, D, E	177.2x265.5	47,047	29.9	54.0x80.9	4,370.8	3,276	3,600	4,000	3,036	253
Exhibition Hall C	177.2x89.4	15,845	29.9	54.0x27.2	1,471.7	1,008	1,566	1,494	780	88
Exhibition Hall D	177.2x59.3	10,508	29.9	54.0x18.1	976.2	672	1,080	902	486	61
Exhibition Hall E	177.2x87.7	15,540	29.9	54.0x26.7	1,443.8	1,008	1,166	1,554	891	90
Exhibition Hall C, D	177.2x148.7	26,350	29.9	54.0x45.3	2,448.0	1,848	2,663	2,340	1,536	141
Exhibition Hall C, D, X	177.2x177.8	31,506	29.9	54.0x54.2	2,927.0	2,352	3,000	2,850	2,025	169
Exhibition Hall D, X	177.2x88.4	15,664	29.9	54.0x26.9	1,455.3	1,008	1,250	1,248	912	89
Exhibition Hall D, X, E	177.2x176.1	31,205	29.9	54.0x53.7	2,899.0	2,184	2,500	2,925	1,560	173
Exhibition Hall X, E	177.2x116.8	20,697	29.9	54.0x35.6	1,922.8	1,344	1,500	1,750	1,092	118
Exhibition Pre-Function	193.1x43.0	8,323	22.0	58.9x13.1	773.2	350	640	300	-	20



Note: Capacity numbers will decrease with the addition of audio-visual equipment, head tables, staging and food and beverage service areas.



## Exhibition Hall

- L Entrance
- R +15 Skywalk



- Over 47,000 square feet of space, divisible into three fully functional standalone halls.
- Floor-to-ceiling windows along one wall and the pre-function area provide ample light and excellent views.

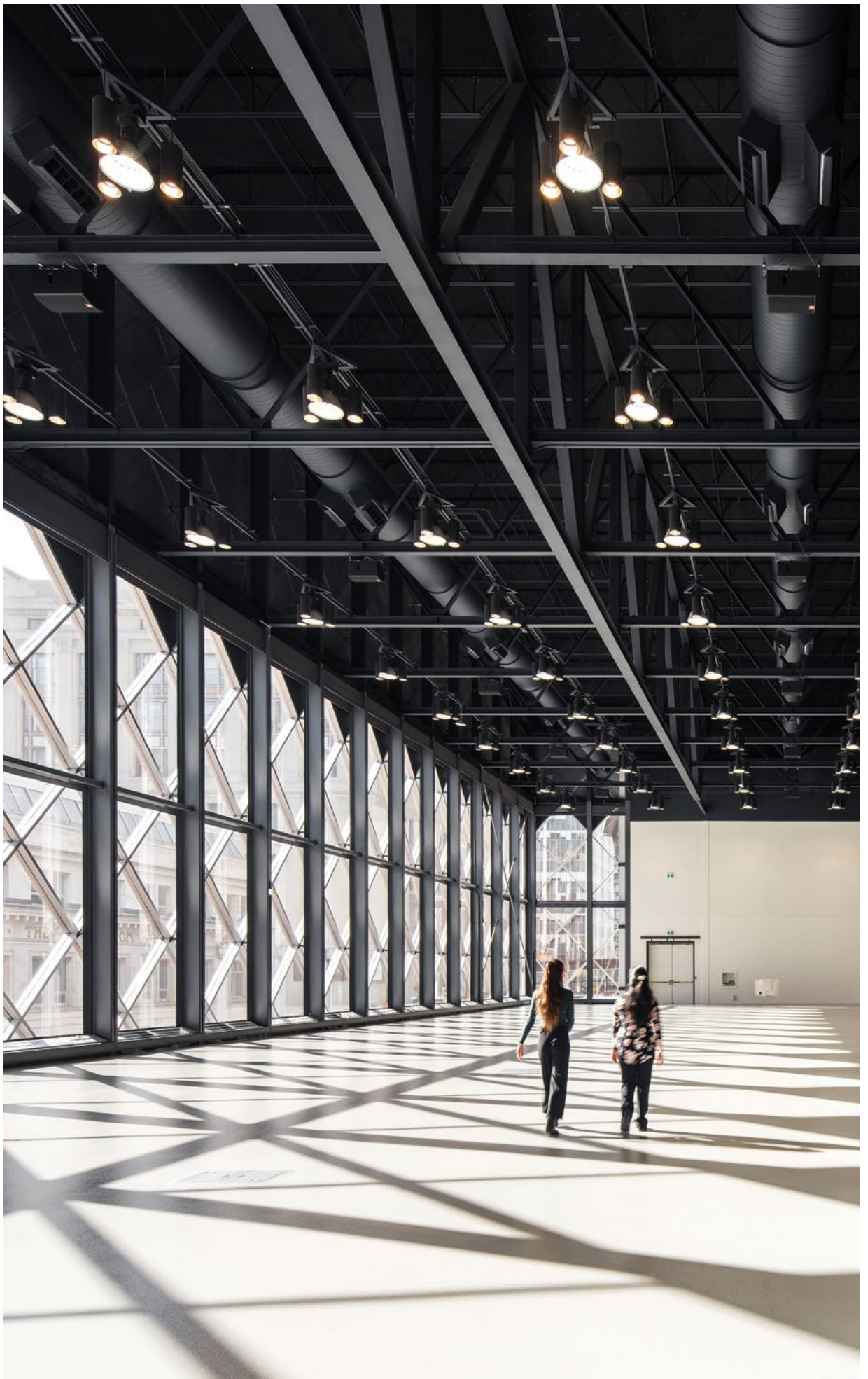


## Exhibition Hall

L Pre-function  
R Hall E



- Hold events of 3,500+ guests, or tradeshow with more than 250 booths.
- Can be linked with custom WiFi networks and any necessary electrical, AV, or presentation equipment.
- Accessible from the +15 Skywalk network and the Hyatt Regency Hotel.
- Adjacent to public and freight elevators, with direct access to the north loading dock.

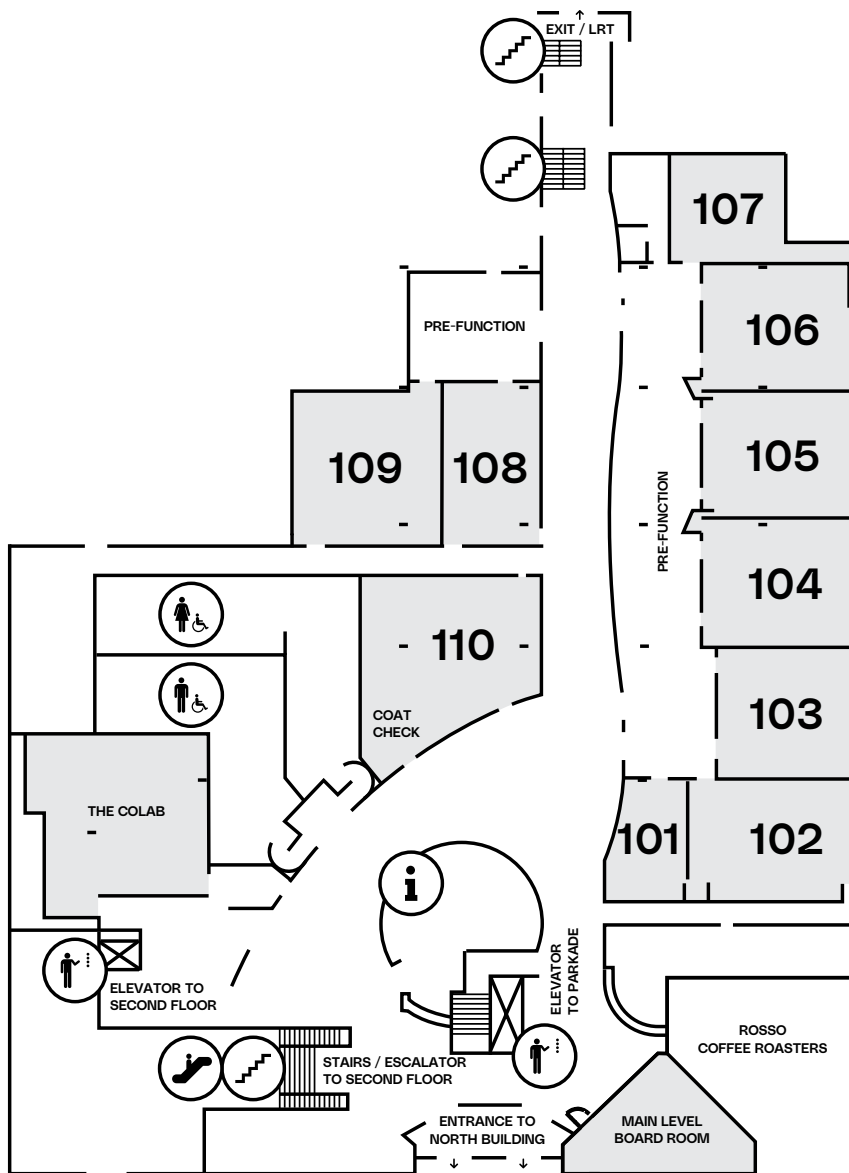


# TELUS Rooms

## North Building Main Level



For absolute flexibility and simultaneous meeting sessions, the TELUS rooms offer multiple layout options for the perfect mix of privacy and collaboration. Spark or develop your next big idea in the adjacent Main Level Boardroom or the Colab space, with easy access to Guest Services, the parkade, and more.



Room	Feet	ft <sup>2</sup>	Ceiling Height	Meters	m <sup>2</sup>	Rounds of 10	Reception	Theater Style	Class Room	Board Room	Hollow Square	U-Shape
<b>North Building</b>												
TELUS 101	27.5x16.3	448	10.2	8.4x5.0	41.60	30	43	35	24	18	22	20
TELUS 102	27.5x35.4	974	10.2	8.4x10.8	90.40	60	77	86	54	26	36	30
TELUS 103	30.0x28.7	861	10.0	9.1x8.7	80.00	50	66	72	45	26	30	24
TELUS 104	34.8x29.8	1,037	10.2	10.6x9.1	96.30	60	83	77	54	26	36	27
TELUS 105	34.8x27.4	954	10.2	10.6x8.4	88.60	60	74	91	54	26	36	27
TELUS 106	34.8x28.5	992	10.2	10.6x8.7	92.10	60	69	77	54	26	36	27
TELUS 107	25.0x26.0	650	7.3	7.6x7.9	60.40	40	47	50	30	18	26	22
TELUS 108	34.6x22.2	768	9.3	10.5x6.8	71.40	60	60	56	36	24	24	24
TELUS 109	30.4x27.6	839	9.3	9.3x8.4	77.90	50	57	72	36	26	30	24
TELUS 110 (Coat Check)	29.3x39.5	1,157	10.1	8.9x12.0	107.50	80	114	85	60	34	36	30
The Colab	43.2x40.3	1,741	8.3	13.2x12.3	161.70	25	80	25	25	25	25	25
TELUS 101, 102	27.5x51.7	1,422	10.2	8.4x15.8	132.10	110	120	130	84	48	50	46
TELUS 104, 105	34.8x57.2	1,991	10.2	10.6x17.4	184.90	130	157	175	90	50	52	44
TELUS 104, 105, 106	34.8x87.5	2,982	10.2	10.6x26.1	277.10	200	226	245	162	74	82	74
TELUS 105, 106	34.8x55.9	1,945	10.2	10.6x17.0	180.70	130	143	168	90	50	52	44
TELUS 108, 109	34.6x49.8	1,723	9.3	10.5x15.2	160.10	110	116	131	81	44	48	44
TELUS Pre-function (101 - 107)	20.9x116.6	2,437	11.0	6.4x35.5	226.40	-	189	-	-	-	-	-
TELUS Pre-function (108 - 109)	25.9x19.0	492	11.2	7.9x5.8	45.70	-	38	-	-	-	-	-



Note: Capacity numbers will decrease with the addition of audio-visual equipment, head tables, staging and food and beverage service areas.



## TELUS Rooms

L Guest Services

R Parking + Security Services



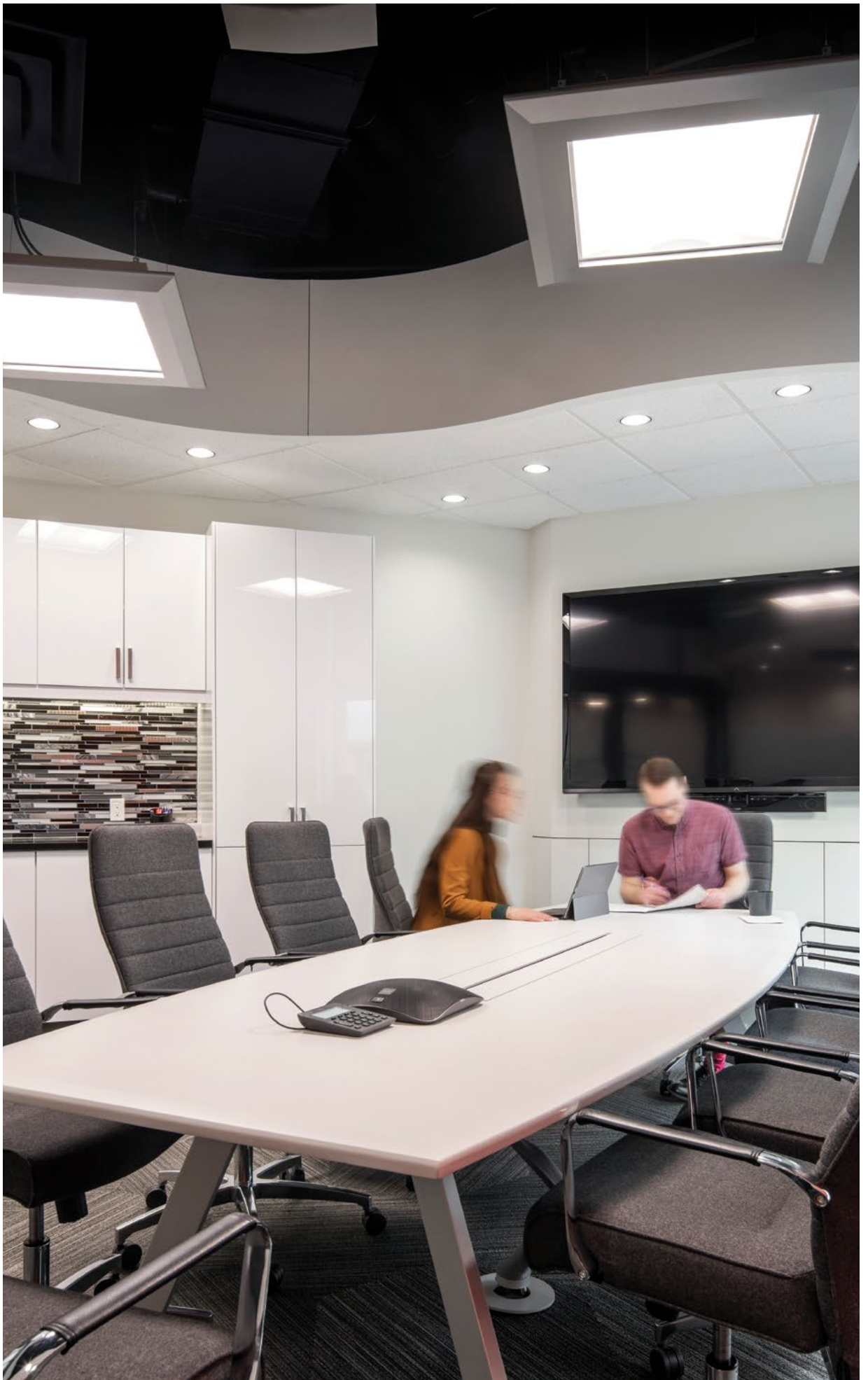
- Flexible wall placement allows for different configurations and breakout rooms as needed.
- Able to be outfitted with requested audio-visual and internet tools.

## TELUS Rooms

- L Pre-function
- R Main Level Boardroom



- Spacious pre-function areas enclosed with glass for noise reduction.
- Home to the Main Level Boardroom and the Colab, unique spaces that foster innovative thinking.
- Close to Guest Services, which is in the main area foyer.
- Capable of accommodating individual groups of 10-245 people, depending on the layout.



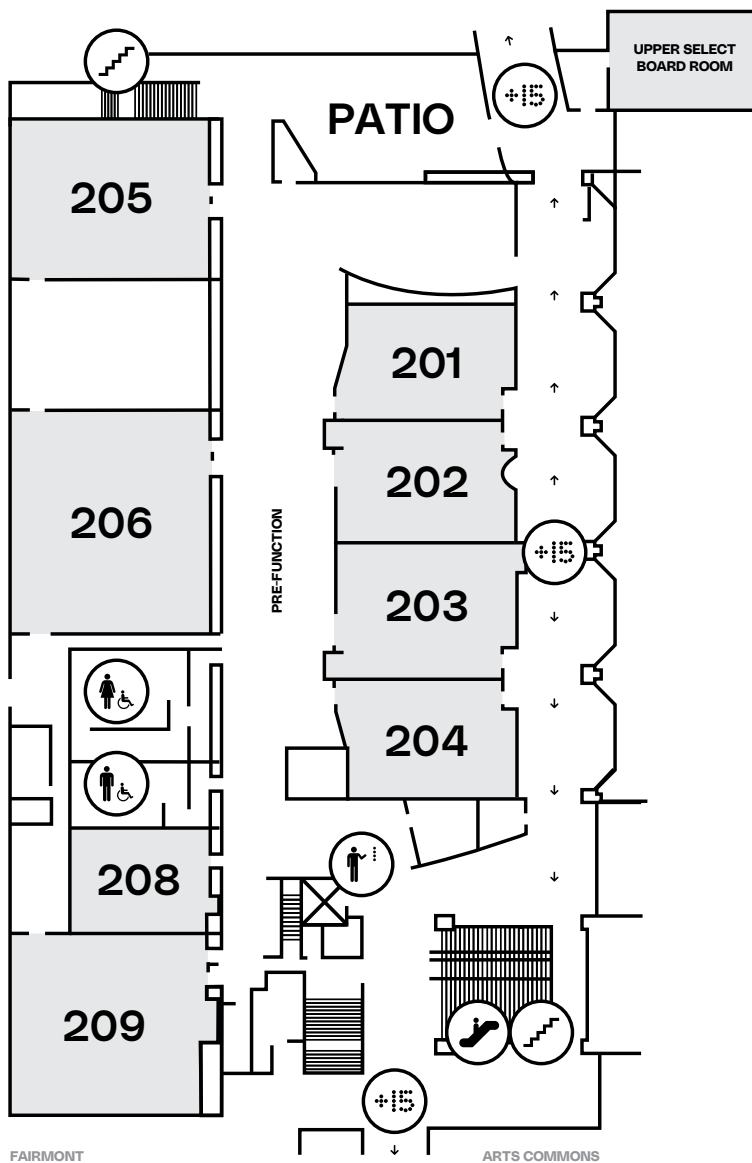


# Glen Rooms

## South Building Second Level



If the mingling is as important as the meetings, the Glen Rooms are an exceptionally versatile and customizable space. Enjoy the skylights and roomy floorplan of the pre-function area, or step onto the adjoining outdoor patio to take in the cityscape that surrounds you.



+15 Skywalk

Washroom

Stairs

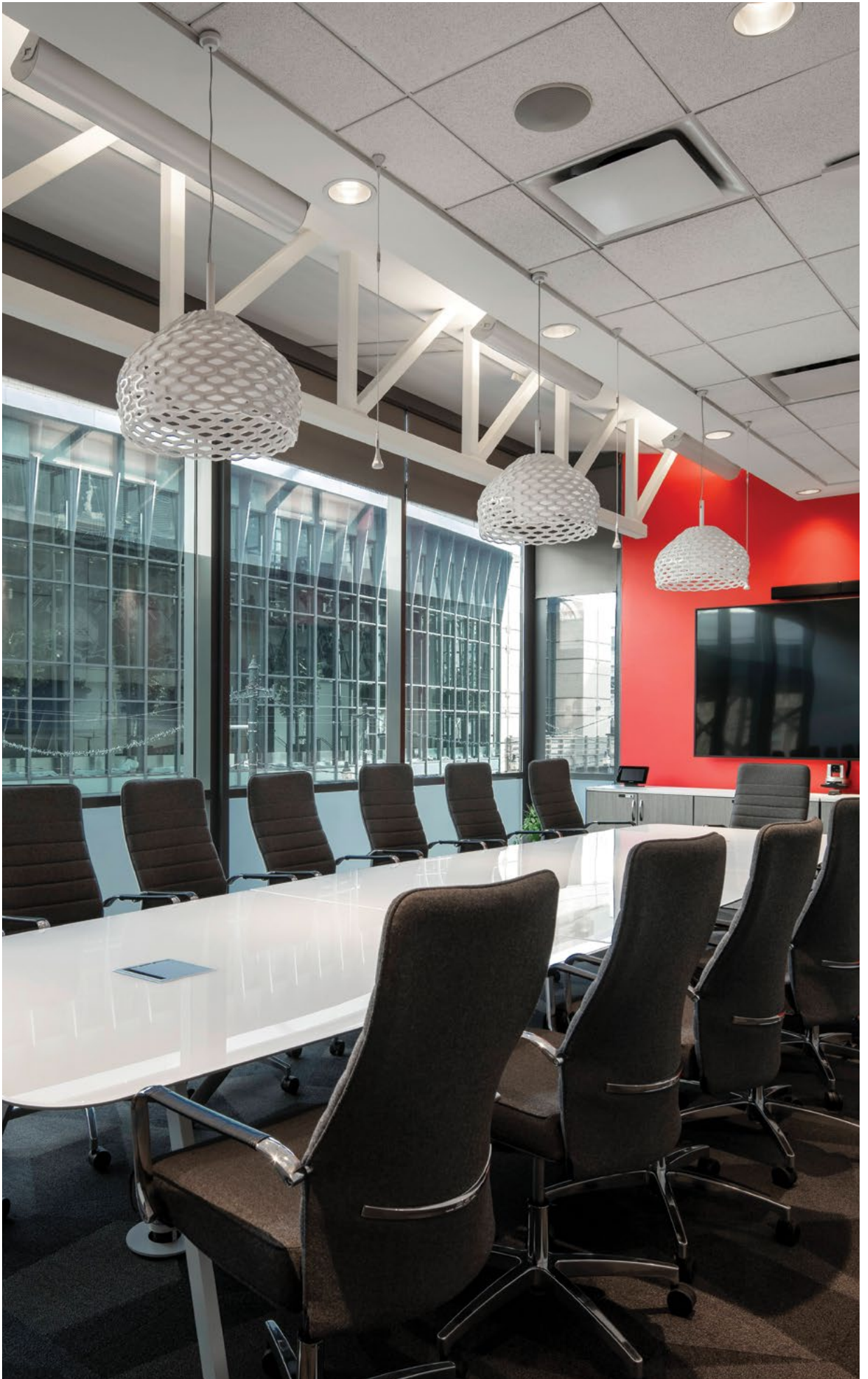
Escalator

Elevator

Room	Feet	ft <sup>2</sup>	Ceiling Height	Meters	m <sup>2</sup>	Rounds of 10	Reception	Theater Style	Class Room	Board Room	Hollow Square	U-Shape
<b>South Building</b>												
Glen 201	37.3x27.3	1,018	9.9	11.4x8.3	94.6	80	69	90	45	32	38	33
Glen 202	38.0x27.6	1,049	9.9	11.6x8.4	97.4	80	74	90	45	32	38	33
Glen 203	38.2x27.7	1,058	9.9	11.6x8.45	98.3	80	74	90	45	32	38	33
Glen 204	36.7x27.3	1,002	9.9	11.2x8.3	93.1	80	74	90	45	32	38	33
Glen 205	40.3x34.3	1,382	8.9	12.3x10.5	128.4	90	107	100	72	32	46	36
Glen 206	41.1x48.6	1,997	8.9	12.5x14.8	185.6	150	155	176	120	44	60	48
Glen 208	31.5x23.4	737	8.9	9.6x7.1	68.5	50	56	63	30	22	30	24
Glen 209	38.4x39.8	1,528	8.9	11.7x12.1	142.0	90	121	130	78	30	42	36
Upper Select Board Room	32.0x17.8	570	-	-	-	-	-	-	-	16	-	-
Glen 201- 202	37.3x54.9	2,048	9.9	11.4x16.7	190.2	160	143	180	96	44	58	55
Glen 201 - 203	37.3x82.6	3,081	9.9	11.4x25.2	286.2	240	217	270	144	66	-	-
Glen 201 - 204	37.3x109.9	4,099	9.9	11.4x33.5	380.8	320	291	360	189	88	-	-
Glen 202 - 203	38.0x55.3	2,101	9.9	11.6x16.9	195.2	160	148	180	105	44	58	55
Glen 202 - 204	38.0x82.6	3,139	9.9	11.6x25.2	291.6	240	222	270	144	66	-	-
Glen 203 - 204	38.2x55.0	2,101	9.9	11.6x16.8	195.2	160	148	180	96	44	58	55
Glen 208 - 209	31.5x63.2	1,991	8.9	9.6x19.3	185.0	150	177	200	126	50	60	54
Glen Pre-function	25.0x125.0	3,125	-	7.6x38.1	290.3	-	242	-	-	-	-	-



Note: Capacity numbers will decrease with the addition of audio-visual equipment, head tables, staging and food and beverage service areas.



## Glen Rooms

- L Upper Select Boardroom
- R +15 Skywalk



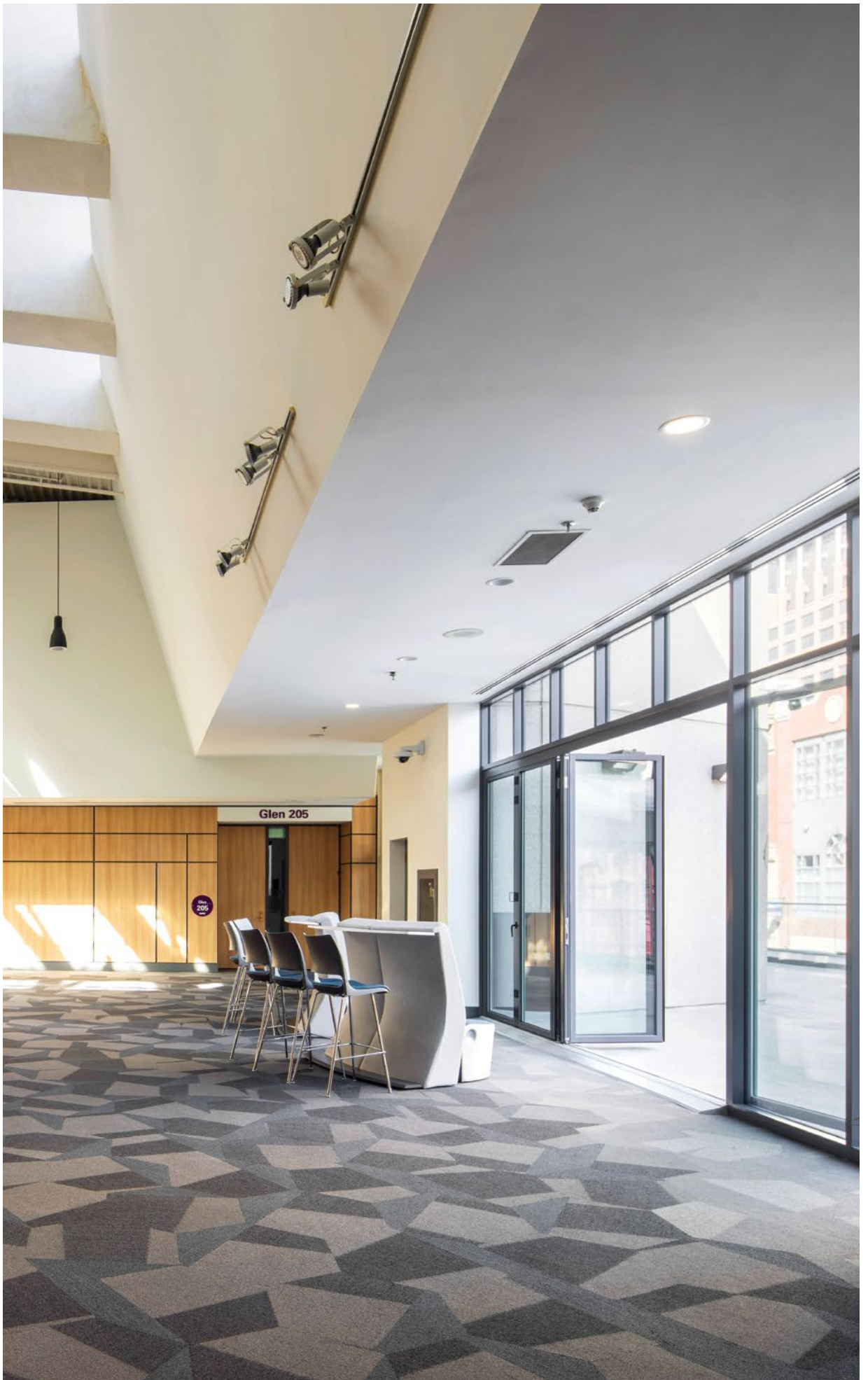
- Eight rooms with movable partition walls, so that the space perfectly matches your group's size.
- Large pre-function space that wraps around the entire area, and an outdoor patio for use in the warmer months.

## Glen Rooms

- L Pre-function
- R Patio



- Natural light from the skylights gives the space a calm and comfortable atmosphere.
- Connected by the +15 Skywalks to the north building, as well as the Calgary Tower and Fairmont Palliser Hotel.
- Approximately 12,000 square feet of space, accommodating groups of 20-350+.
- The Upper Select Boardroom – a fully networked executive corner office, with a great view of Stephen Avenue.

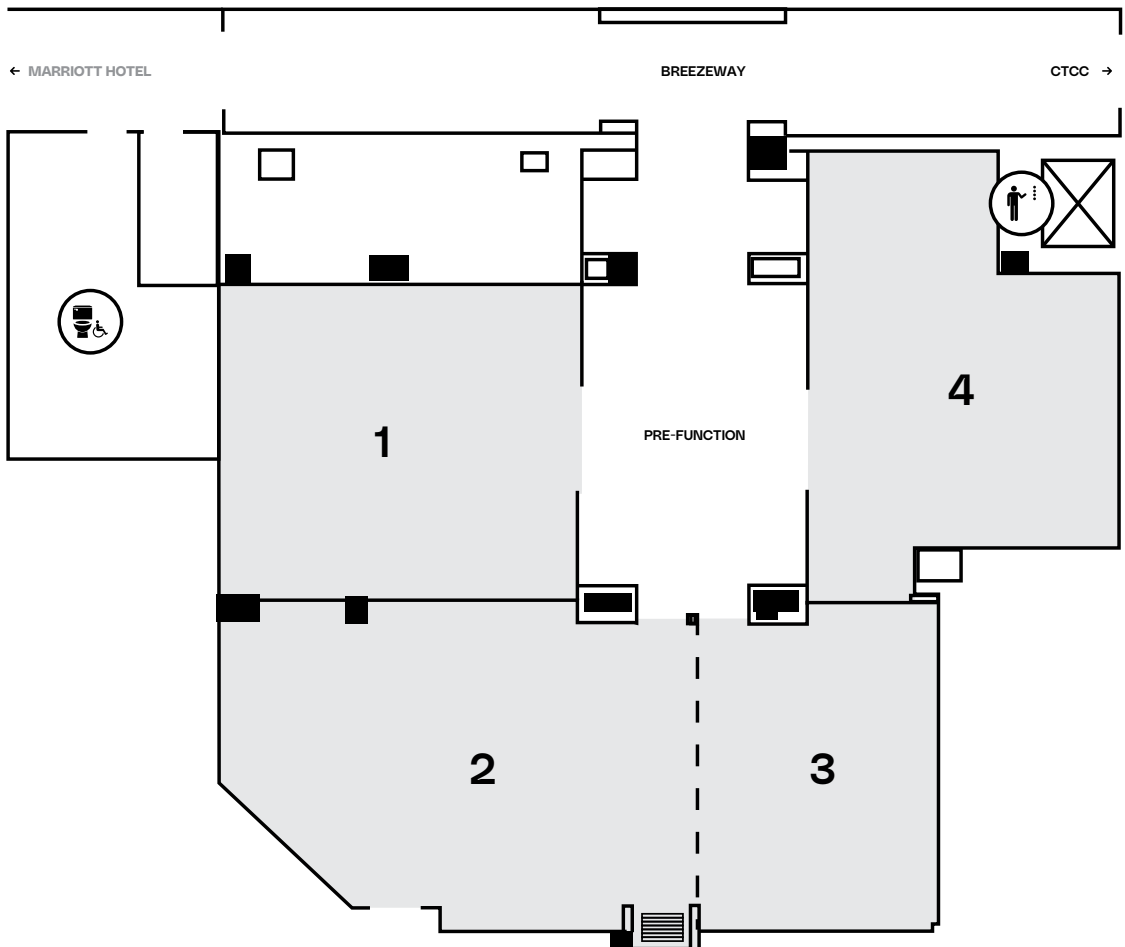


# Ideation Centre

## South Building Main Level



When you're on the path toward a big idea, you want a flexible space to accommodate every bit of creativity. The Ideation Centre is ideal for small- and mid-size groups, with movable walls and pre-function space for breakout rooms as well as full-scale brainstorming and discussion.



Room	Feet	ft <sup>2</sup>	Ceiling Height	Meters	m <sup>2</sup>	Rounds of 10	Reception	Theater Style	Class Room	Board Room	Hollow Square	U-Shape
<b>South Building</b>												
Ideation 2	27.3x37.8	1,032	11.8	8.3x11.5	95.9	50	76	50	36	24	24	16
Ideation 3	27.3x19.5	532	11.8	8.3x5.9	49.5	30	42	40	24	20	22	10
Ideation 2/3	27.3x57.3	1,564	11.8	8.3x17.5	145.3	90	118	102	60	36	32	20

Ideation 1 - Signature room set up: 20.

Ideation 4 - Signature room set up: 18.







## Ideation Centre

- L Entrance
- R Breezeway



- Bright spaces with furnishings purposely chosen to encourage easier collaboration.
- Four rooms in total, with optional partition in Rooms 2 & 3 and an adjoining central pre-function area.

## Ideation Centre

L Pre-function  
R Room 4



- Main floor location for easy access to Stephen Avenue and the Calgary Marriott Downtown hotel.
- Perfectly suited for board meetings, workshops, and simultaneous brainstorming sessions.
- Approximately 3,000 square feet of space, in rooms ranging from 532 to 1,564 square feet each.
- Comfortably seats up to 160 people across all rooms.





Room	Feet	ft <sup>2</sup>	Ceiling Height	Meters	Rounds of 10	Reception	Theater Style	Class Room	Board Room	Hollow Square	U-Shape	Booth 10 x10
<b>South Building</b>												
Macleod Hall	126.0x156.8	19,757	11.9-20.3	38.4x47.8	1,590	1,700	2,100	900	-	-	-	96
*Macleod Hall A	126.0x65.9	8,303	20.3	38.4x20.1	570	640	680	450	-	-	-	36
Macleod Hall A1	37.7x26.5	999	11.9	11.5x8.1	80	77	100	54	32	38	30	-
Macleod Hall A2	37.7x20.0	754	11.9	11.5x6.1	50	58	60	36	26	34	30	-
Macleod Hall A3	37.7x20.0	754	11.9	11.5x6.1	50	58	60	36	26	34	30	-
Macleod Hall A4	37.7x25.0	943	11.9	11.5x7.6	80	87	100	54	32	38	30	-
Macleod Hall A5	126.0x28.2	3,553	20.3	38.4x8.6	-	-	-	-	-	-	-	-
Macleod Hall B	126.0x27.8	3,503	20.3	38.4x8.5	220	200	280	150	-	-	-	23
Macleod Hall C	126.0x27.8	3,503	20.3	38.4x8.5	220	200	280	150	-	-	-	23
Macleod Hall D	126.0x35.3	4,448	20.3	38.4x10.8	330	340	350	200	-	-	-	23
Macleod Hall Pre-function	62.0x108.6	6,733	10.0	18.9x33.1	-	520	-	-	-	-	-	-
Macleod Hall A1,2	37.7x46.5	1,753	11.9	11.5x14.2	130	145	145	96	42	50	42	-
Macleod Hall A1, 2, 3	37.7x66.4	2,503	11.9	11.5x20.2	180	203	200	141	-	-	-	-
Macleod Hall A1, 2, 3, 4	37.7x91.4	3,446	11.9	11.5x27.9	270	296	290	192	-	-	-	-
Macleod Hall A2, 3	37.7x39.9	1,504	11.9	11.5x12.2	100	116	110	90	32	48	38	-
Macleod Hall A2, 3, 4	37.7x64.9	2,447	11.9	11.5x19.8	180	208	200	141	-	-	-	-
Macleod Hall A3, 4	37.7x44.9	1,693	11.9	11.5x13.7	130	151	145	96	42	50	42	-
*Macleod Hall A, B	126.0x93.7	11,806	11.9 - 20.3	38.4x28.6	870	912	1,100	714	-	-	-	57
*Macleod Hall A, B, C	126.0x121.5	15,309	11.9 - 20.3	38.4x37.0	1,120	1,182	1,550	860	-	-	-	78
Macleod Hall B, C	126.0x55.6	7,006	20.3	38.4x16.9	480	540	660	414	-	-	-	44
Macleod Hall B, C, D	126.0x90.9	11,453	20.3	38.4x27.7	920	900	1,100	690	-	-	-	63
Macleod Hall C,D	126.0x63.1	7,951	20.3	38.4x19.2	690	776	806	504	-	-	-	42
Pacific 6	17.1x24.3	416	-	5.2x7.4	20	20	25	12	14	18	14	-
Macleod Hall E1	47.0x31.3	1,471	12.5	14.3x9.5	100	85	120	60	32	38	34	-
Macleod Hall E2	47.0x29.3	1,377	12.5	14.3x8.9	80	85	100	54	32	38	34	-
Macleod Hall E3	47.0x29.3	1,377	12.5	14.3x8.9	80	85	100	54	32	38	34	-
Macleod Hall E4	47.0x29.3	1,377	12.5	14.3x8.9	80	85	100	54	32	38	34	-
Macleod Hall E Pre-Function	111.6x27.0	3,013	12.5	34.0x8.2	-	171	-	-	-	-	-	-



Note: Capacity numbers will decrease with the addition of audio-visual equipment, head tables, staging and food and beverage service areas.

\*Macleod Hall A includes A1, A2, A3, A4.



## Macleod Hall

- L1 Pre-function
- L2 Hall A, B, C, D
- R Pre-function E



- Built-in coat check area, multiple washrooms, and easy access to an elevator.
- Enjoy nearly 20,000 square feet of space to set up in the style most suited to your event.
- Arrange the movable walls to create a single space, or up to seven small rooms with a large pre-function area.
- Accommodate groups as small as 30 people, or as large as 2,100 in the full configuration.



